



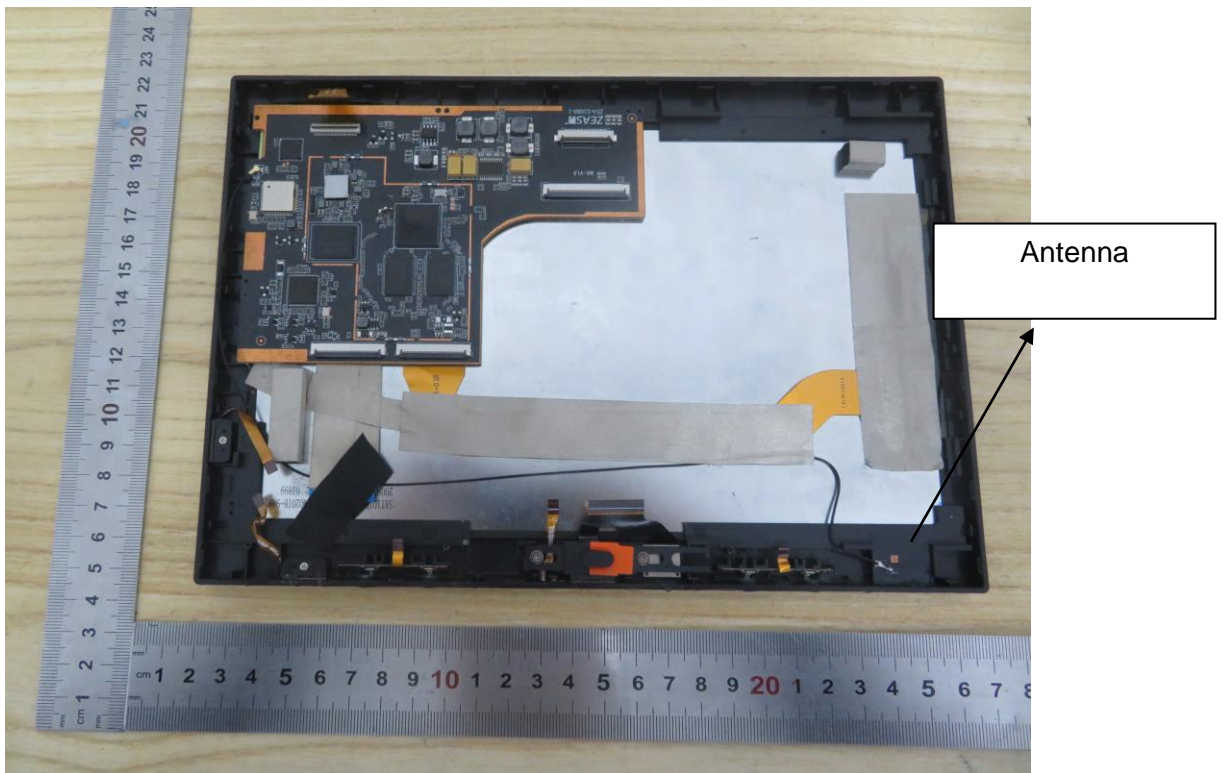
## **Appendix II**

### **Internal Photographs**

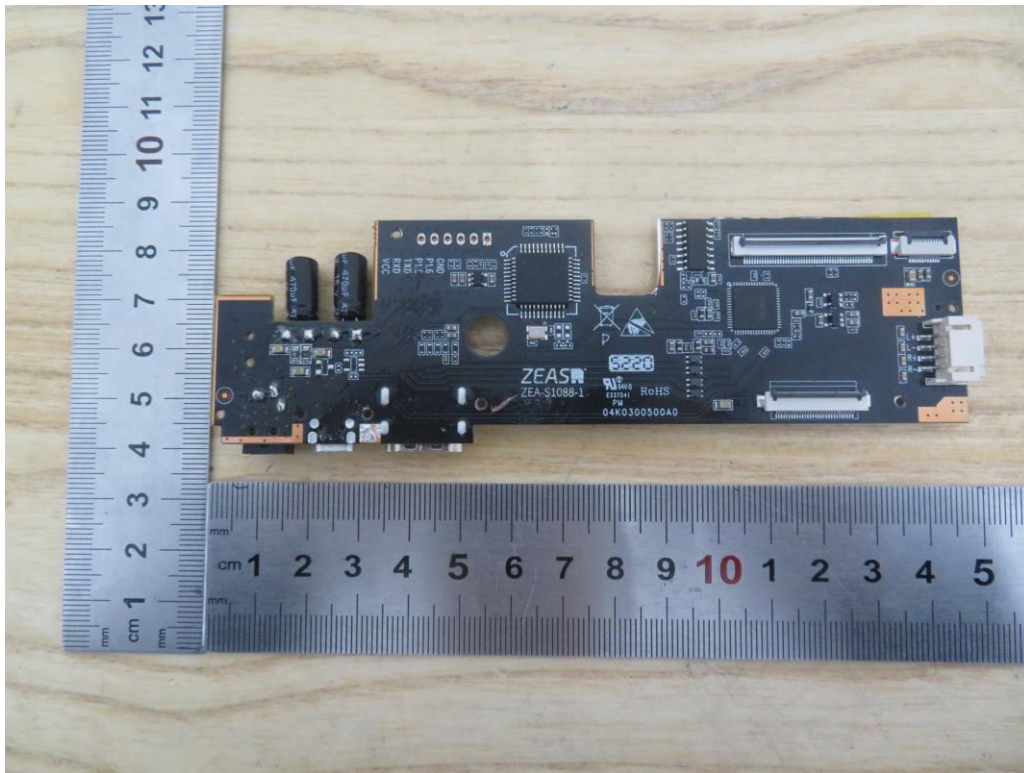
## Internal View of EUT-1



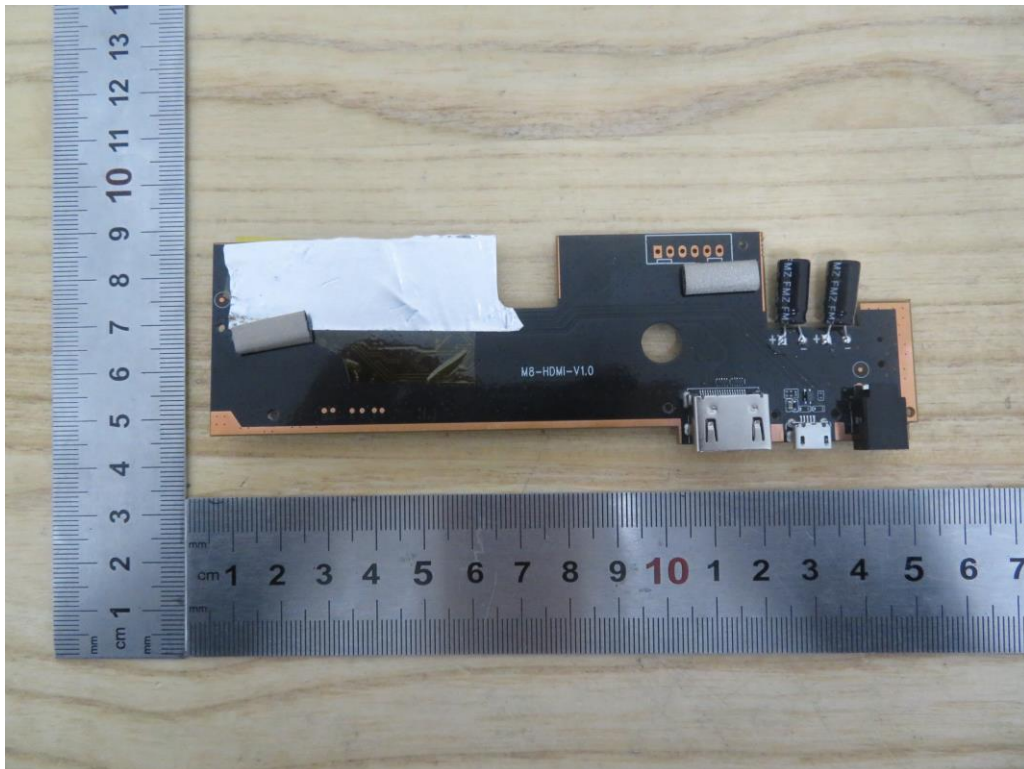
## Internal View of EUT-2



Internal View of EUT-3

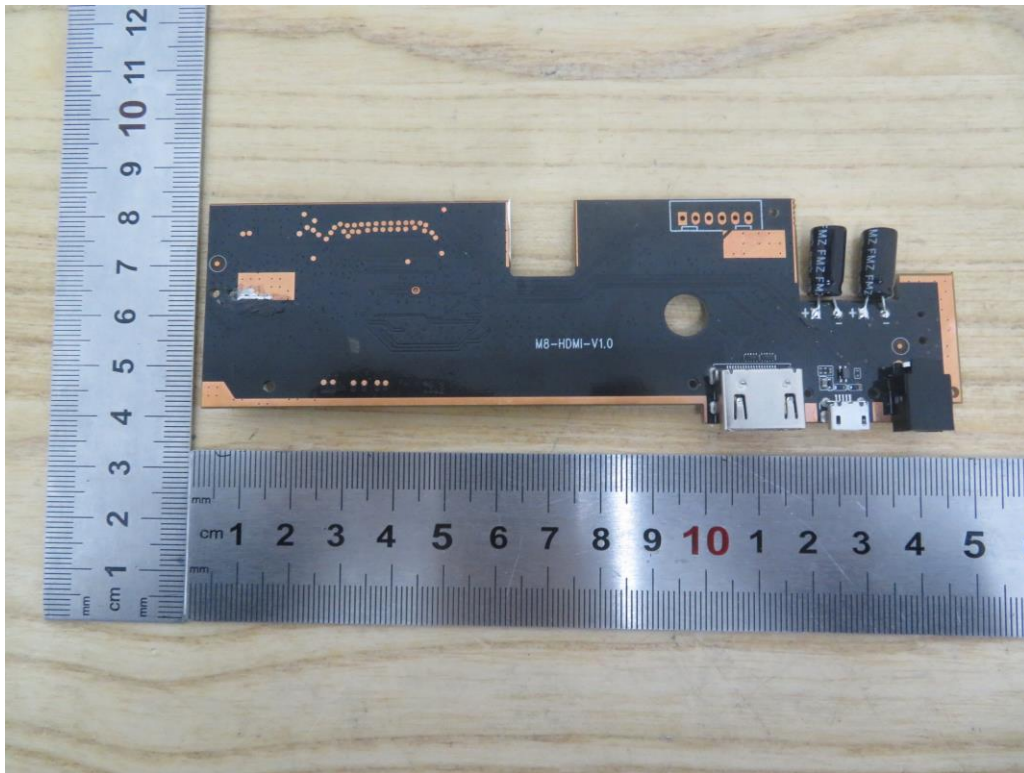


Internal View of EUT-4

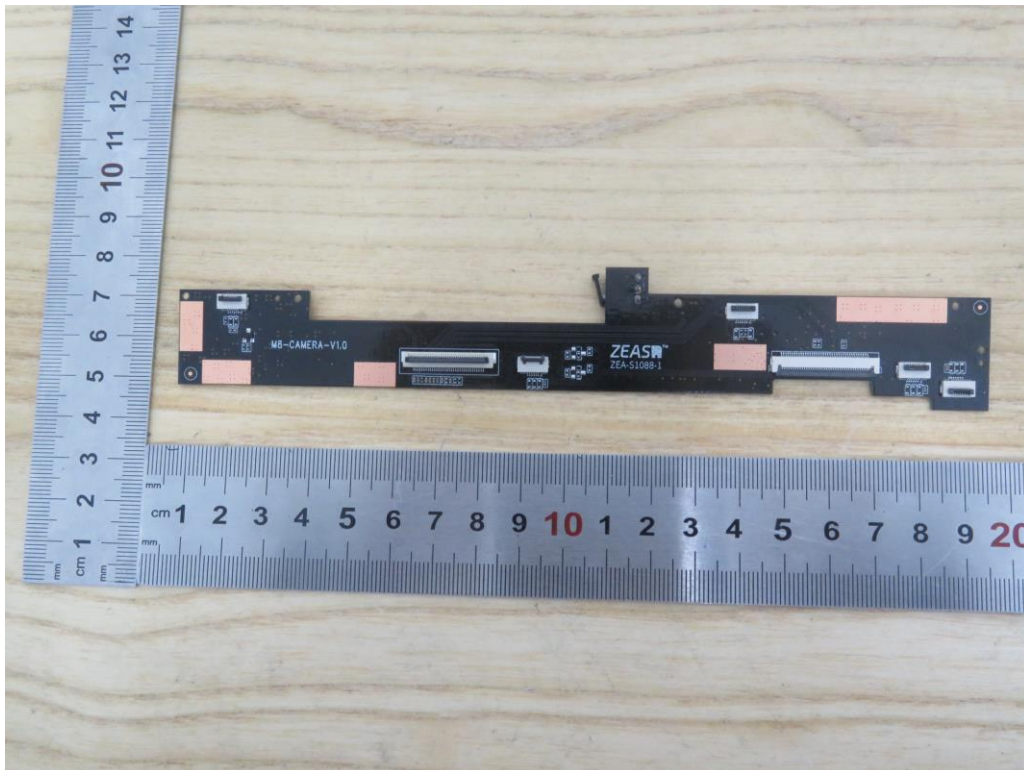




## Internal View of EUT-5



## Internal View of EUT-6

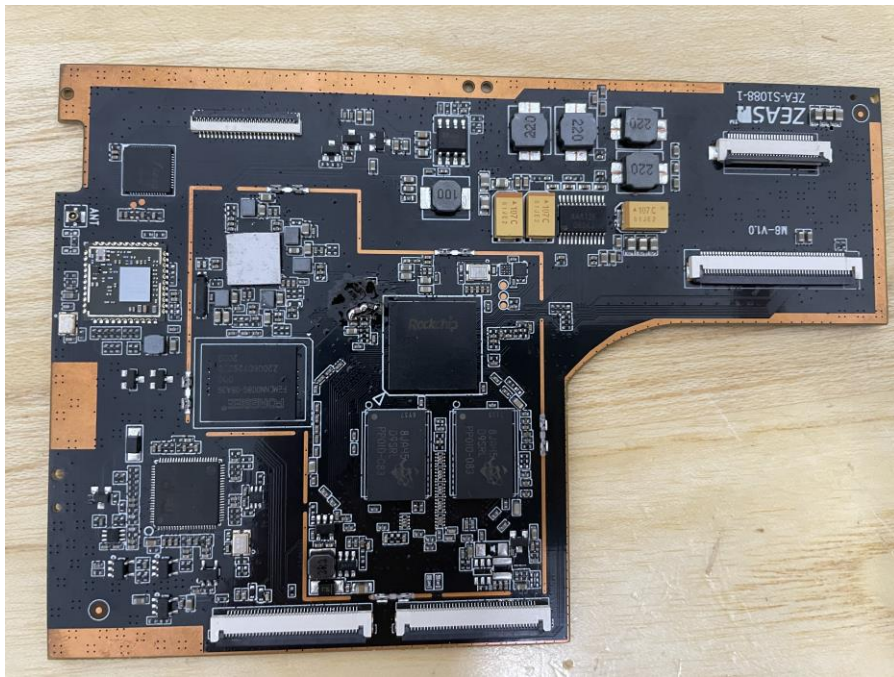


The image shows a Zebra ZEA-51088-1 barcode scanner PCB assembly. The assembly is black with orange edges and features a large silver heat sink, various electronic components, and connectors. It is placed on a wooden surface next to a ruler for scale.

## A photograph of a disassembled laptop, showing the internal components. The main components visible are the motherboard, two RAM modules, and a storage drive. The motherboard is black with various electronic components, including capacitors, resistors, and integrated circuits. The RAM modules are silver and are seated in their respective slots. The storage drive is a small, rectangular component. The entire assembly is placed on a light-colored wooden surface. A ruler is positioned vertically on the left side of the image, providing a scale for the components. The ruler shows measurements in centimeters and millimeters. The text 'ZEAS' and 'ZEAS-1088-1' are visible on the motherboard.



## Internal View of EUT-9



## Detail View of Antenna

