

**ELECTROMAGNETIC EMISSIONS COMPLIANCE REPORT
CERTIFICATION TO FCC PART 15 REQUIREMENTS**

for

INTENTIONAL RADIATOR

49.860MHz RC TRANSMITTER

MODEL NO: 91754

BRAND NAME: TYCO RC-FAST GEAR CHEVY SSR

FCC ID NO: APB91754-02A4T

REPORT NO: 02U1209-1

ISSUE DATE: APRIL 4, 2002

Prepared for

**MATTEL MT. LAUREL
6000 MIDATLANTIC DRIVE
MOUNT LAUREL, NJ 08054
USA**

Prepared by

**COMPLIANCE CERTIFICATION SERVICES
561 F MONTEREY ROAD
MORGAN HILL, CA 95037, USA
TEL: (408) 463-0885
FAX: (408) 463-0888**

TABLE OF CONTENTS	PAGE
1.VERIFICATION OF COMPLIANCE.....	3
2.PRODUCT DESCRIPTION.....	4
3.TEST FACILITY.....	4
4.MEASUREMENT STANDARDS.....	4
5.TEST METHODOLOGY.....	4
6.MEASUREMENT EQUIPMENT USED.....	5
7.TEST PROCEDURES AND TEST RESULTS	6
RADIATED EMISSION TEST: (15.235 (A)).....	6
RADIATED EMISSION TEST: (15.235 (B)).....	6
9.APPENDIX	14
EUT PHOTOGRAPHS	14
SCHEMATICS	17
BLOCK DIAGRAM.....	17
USER’S MANUAL	17

1. VERIFICATION OF COMPLIANCE

COMPANY NAME : MATTEL MT. LAUREL
6000 MIDATLANTIC DRIVE
MOUNT LAUREL, NJ 08054
USA

CONTACT PERSON : FRANK WINKLER, SENIOR PROJECT ENGINEER

TELEPHONE NO. : (856) 840-1259

EUT DESCRIPTION : 49.860MHz RC TRANSMITTER

MODEL NAME/NUMBER : 91754

BRAND NAME : TYCO RC-FAST GEAR CHEVY SSR

SERIAL NUMBER : N/A

FCC ID : APB91754-02A4T

DATE TESTED : APRIL 4, 2002

REPORT NUMBER : 02U1209-1

TYPE OF EQUIPMENT	RADIO CONTROL
EQUIPMENT TYPE	49.86 MHz TRANSMITTER
MEASUREMENT PROCEDURE	ANSI 63.4 / 1992
LIMIT TYPE	CERTIFICATION
FCC RULE	CFR 47, PART 15 SUBPART C

The above equipment was tested by Compliance Engineering Services, Inc. for compliance with the requirements set forth in CFR 47, PART 15 SUBPART C. This said equipment in the configuration described in this report shows that maximum emission levels emanating from equipment are within the compliance requirements.

Warning : This document reports conditions under which testing was conducted and results of tests performed. This document may not be altered or revised in any way unless done so by Compliance Certification Services and all revisions are duly noted in the revisions section. Any alteration of this document not carried out by Compliance Certification will constitute fraud and shall nullify the document.

Tested By:

Reviewed & Released For CCS By:



JERRY HOVEY
ASSOCIATE EMC ENGINEER
COMPLIANCE CERTIFICATION SERVICES

MIKE HECKROTTE
EMC CHIEF ENGINEER
COMPLIANCE CERTIFICATION SERVICES

2.PRODUCT DESCRIPTION

CHASSIS TYPE	Plastic
Fundamental Frequency	49.86 MHz
Type of Modulation	On Off Keying of a fixed Frequency Carrier Wave
Power Derived From	9Volt Battery
Type of Transmission	Continuous
Duty Cycle of Transmitter	4 start bits @75%duty cycle followed by N data bits @50% duty cycle
Antenna Requirement	Permanently Affixed
Antenna Type	12" long, permanently attached wire whip
Power Requirement	9VDC
Intended Use	RC Transmitter for Controlling a toy car
Associated Receiver	APB97577-01A4R

3.TEST FACILITY

The 3/10/30 meter open area test site and conducted measurement facility used to collect the radiated data is located at 561F Monterey Road, Morgan Hill, California, U.S.A. A detailed description of the test facility was submitted to the Commission on May 27, 1994.

4.MEASUREMENT STANDARDS

The site is constructed and calibrated in conformance with the requirements of ANSI C63.4/1992.

5.TEST METHODOLOGY

For an intentional radiator, the spectrum shall be investigated from the lowest radio frequency signal generated in the device, without going below 9 KHz, up to at least the tenth harmonic of the highest fundamental frequency or to 40 GHz, whichever is lower. (CFR 47 Section 15.33)

6.MEASUREMENT EQUIPMENT USED

TEST EQUIPMENTS LIST				
Name of Equipment	Manufacturer	Model No.	Serial No.	Due Date
EMC Receiver (9K-26.5GHz)	HP	8593EM	3710A00205	6/20/02
Antenna Bilog	Chase EMC Ltd.	CBL6112	2049	3/29/03
Pre-Amplifier,25 dB	HP0.1-1300MHz	8447D (P_1M)	2944A06833	8/21/02

7. TEST PROCEDURES AND TEST RESULTS

RADIATED EMISSION TEST: (15.235 (a))

Test Procedure

1. The EUT was placed on a wooden table on the outdoor ground plane. The search antenna was placed 3 meter from the EUT. The EUT was placed in X, Y, and Z position to simulate the actual usage.
2. The turntable was slowly rotated to locate the direction of maximum emission at each EUT position. Once the maximum direction and EUT position was determined, the search antenna was raised and lowered in both vertical and horizontal polarization. The maximum readings so obtained are recorded in the data list below.

Test Result: Peak emission was under average limit. Refer to attached plot and spreadsheet.

RADIATED EMISSION TEST: (15.235 (b))


Test Requirement: The field strength between the band edges and up to 10kHz above and below the band edges shall be attenuated at least 26 dB below the level of the unmodulated carrier or to the general limits in 15.209, which permits the higher emission levels. All emissions more than 10KHz from the band edges shall be below the levels specified in 15.209.

Test Procedure:

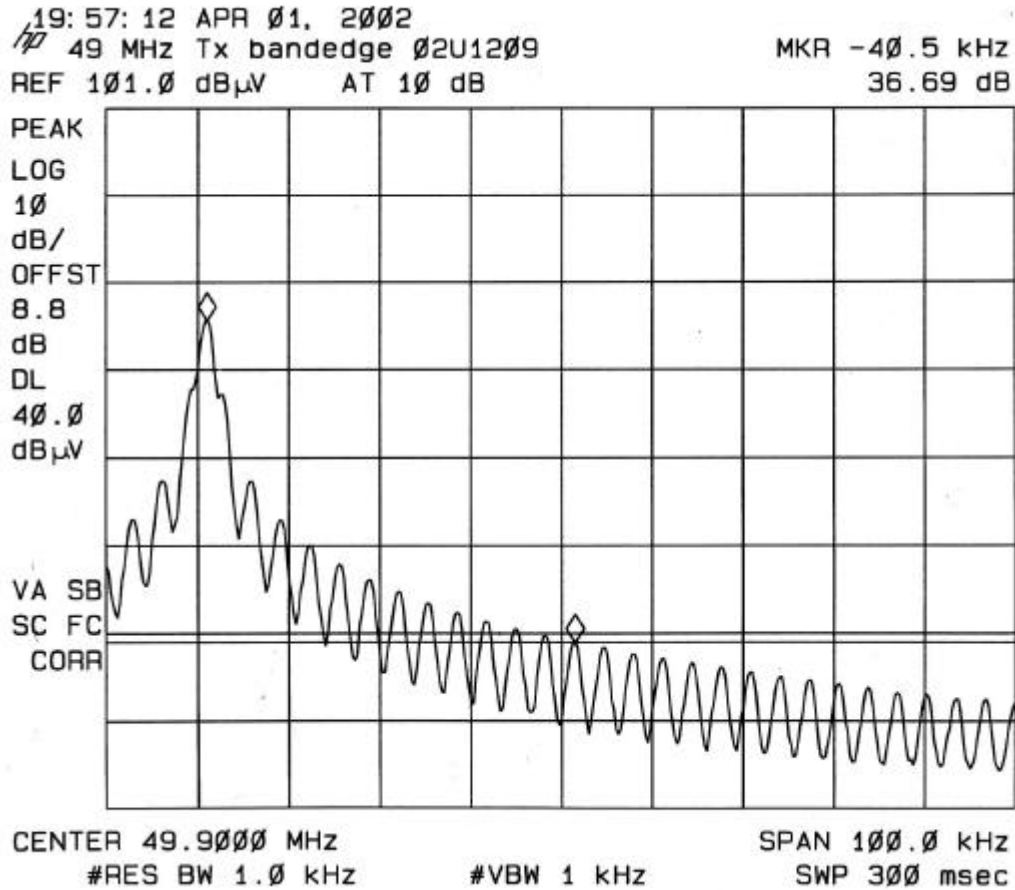
1. The EUT was placed on a wooden table on the outdoor ground plane. The search antenna was placed 3 meter from the EUT. The EUT was placed in X, Y, and Z position to simulate the actual usage.
2. The turntable was slowly rotated to locate the direction of the maximum emission. Once the maximum direction was determined, the search antenna was raised and lowered in both vertical and horizontal polarizations. Maximum emissions were then recorded. For band edge measurements plots were taken. All plots were offset for cable loss, amplifier gain, antenna factor, etc.
3. In the position and orientation of maximum emission a plot was taken using 100KHz RES B/W and 100KHz VID B/W, Start frequency 49.81MHz, Stop frequency 49.91MHz. The marker function shows the peak emission level.
4. In the same position and orientation as step 3 a plot was taken using 30KHz RES B/W and 30KHz VID B/W, Start frequency 49.81MHz, Stop frequency 49.91MHz. The marker function shows the peak emission level.

5. In the same position and orientation as step 3 a plot was taken using 10KHz RES B/W and 10KHz VID B/W, Start frequency 49.81MHz, Stop frequency 49.91MHz. The marker function shows the peak emission level.
6. The peak carrier level did not change using 100KHz, 30KHz and 10KHz RES B/Ws. The 10KHz RES B/W plot is used to show compliance to the 15.209 limits in the 10KHz band edges.

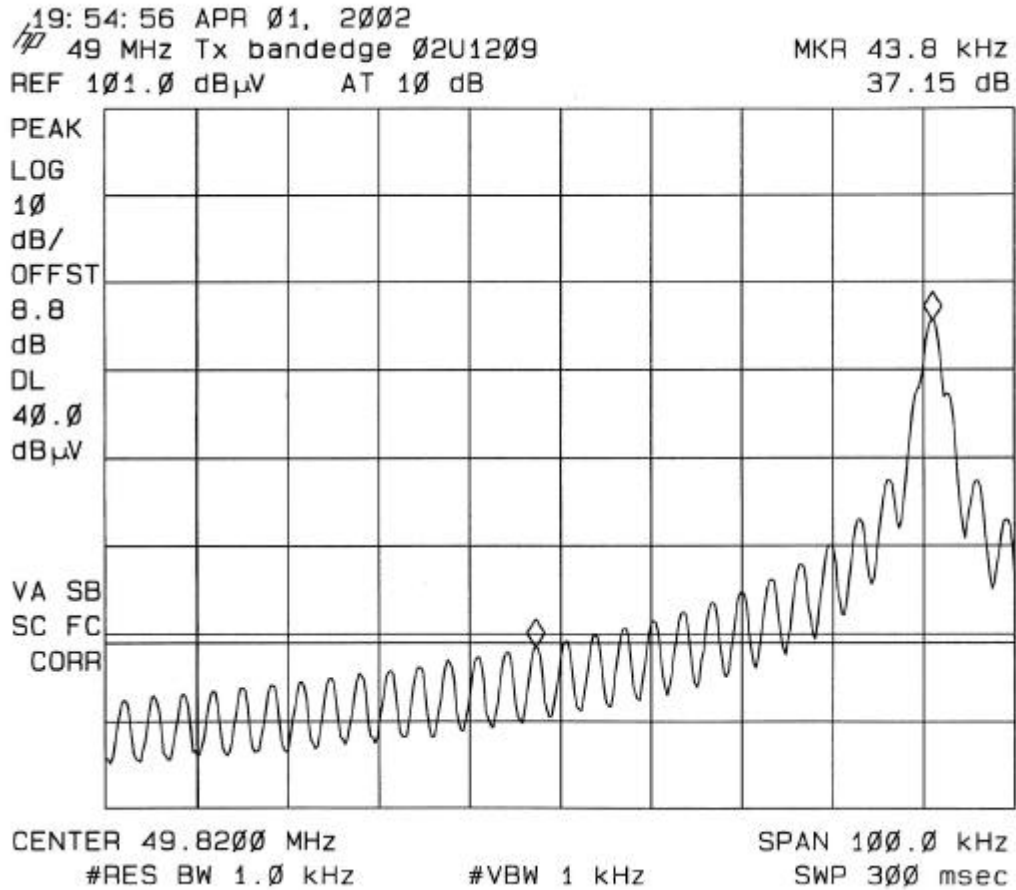
Test results: All emissions were under specified limits. Refer to attached plots and tabular data sheet.

		Project #: 02U1209-U Report #: 020403A4 Date & Time: 04/04/02 3:32 PM Test Engr: JCH									
		FCC, VCCI, CISPR, CE, AUSTEL, NZ UL, CSA, TUV, BSMI, DHHS, NVLAP 561F MONTEREY ROAD, SAN JOSE, CA 95037-9001 PHONE: (408) 463-0885 FAX: (408) 463-0888									
Company: MATTEL MOUNT LAUREL F.W EUT Description: 49 MHZ TRANSMITTER M/N CHEVY SSR (US) #91754 Test Configuration: EUT ONLY Type of Test: FCC 15.235 Mode of Operation: TRANSMITTING											
<input checked="" type="radio"/> A-Site <input type="radio"/> B-Site <input type="radio"/> C-Site <input type="radio"/> F-Site 6 Worst Data Descending											
Freq. (MHz)	Reading (dBuV)	AF (dB)	Closs (dB)	Pre-amp (dB)	Level (dBuV/m)	Limit FCC_B	Margin (dB)	Pol (H/V)	Az (Deg)	Height (Meter)	Mark (P/Q/A)
37.87	44.30	13.43	0.84	27.64	30.92	40.00	-9.08	3mV	180.00	1.00	P
46.65	45.80	9.01	0.90	27.63	28.08	40.00	-11.92	3mV	180.00	1.00	P
56.07	44.80	6.86	0.98	27.62	25.03	40.00	-14.97	3mV	180.00	1.00	P
56.63	48.40	6.77	0.99	27.62	28.54	40.00	-11.46	3mV	180.00	1.00	P
61.86	45.90	6.22	1.03	27.62	25.53	40.00	-14.47	3mV	180.00	1.00	P
139.13	40.60	11.18	1.60	27.46	25.92	43.50	-17.58	3mV	180.00	1.00	P
144.37	48.00	10.94	1.60	27.43	33.11	43.50	-10.39	3mV	180.00	1.00	P
144.93	42.10	10.91	1.60	27.43	27.18	43.50	-16.32	3mV	180.00	1.00	P
148.96	39.60	10.71	1.61	27.41	24.51	43.50	-18.99	3mV	180.00	1.00	P
156.96	43.40	10.51	1.67	27.39	28.19	43.50	-15.31	3mV	180.00	1.00	P
Total data #: 10 V.2a											

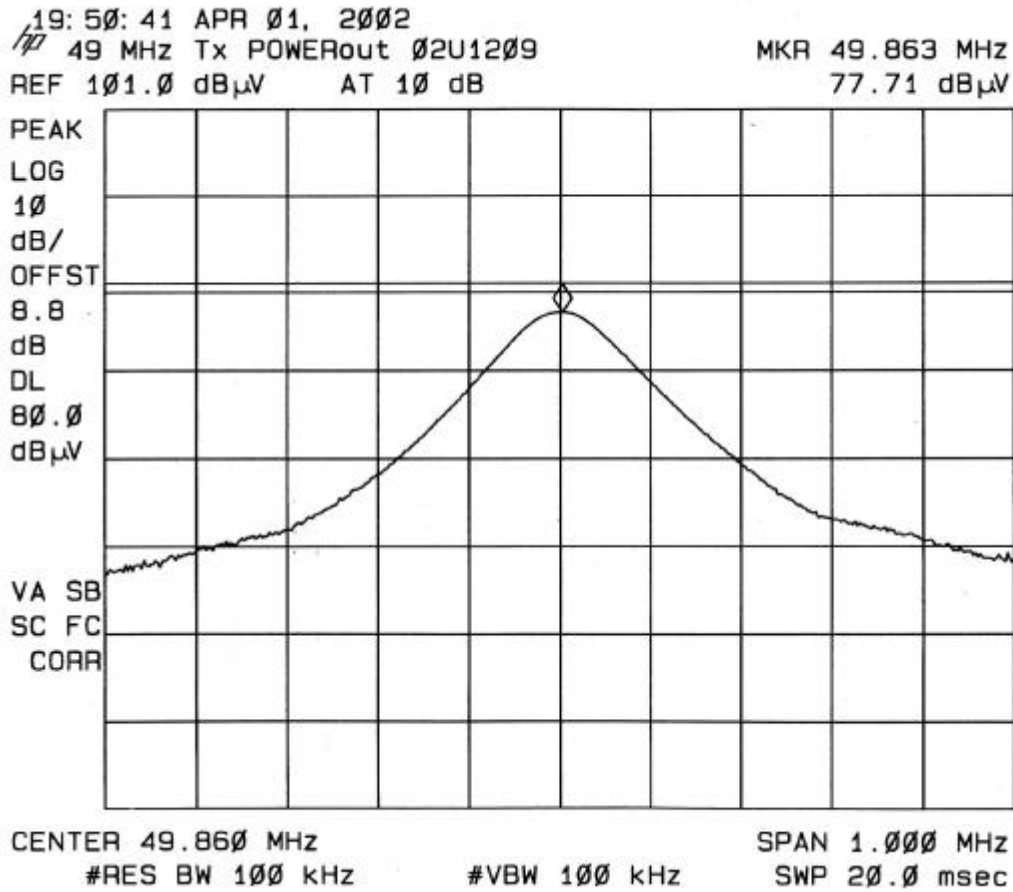
Upper Bandedge Plot



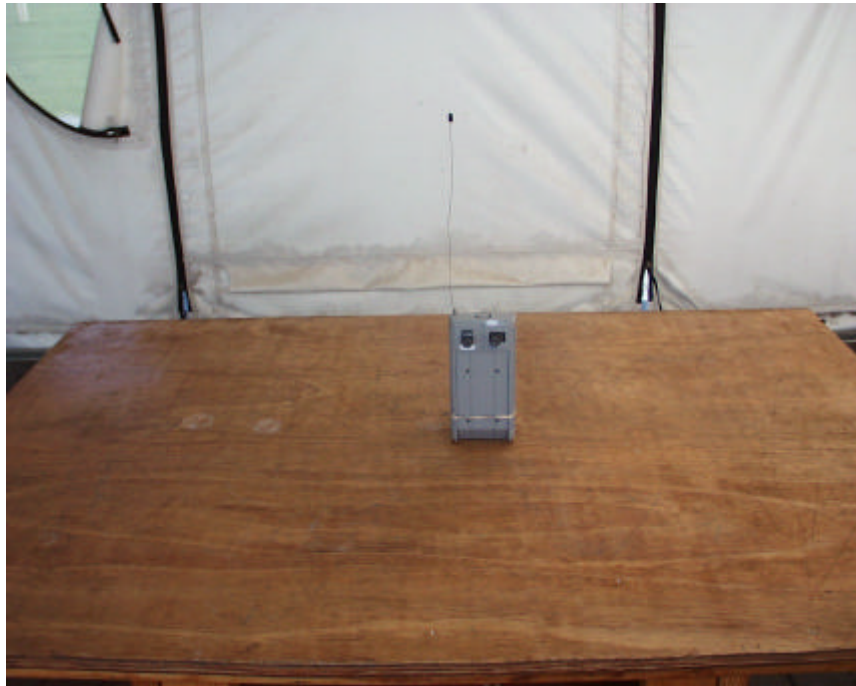
Lower Bandedge Plot



Fundamental Power Plot (Peak Reading Less than Average Limit)



RADIATED EMISSION TEST SETUP PHOTOS

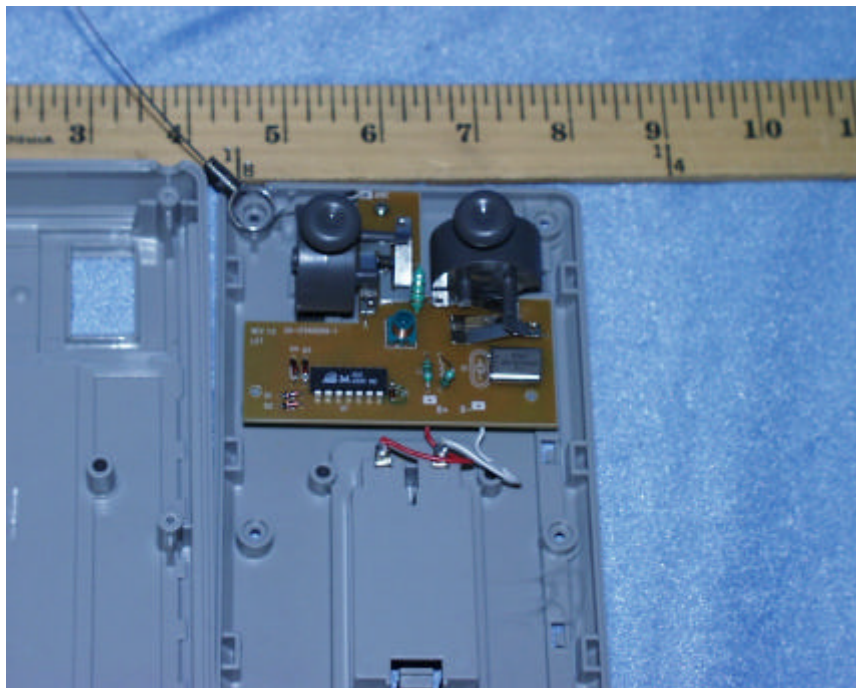




9.APPENDIX

EUT PHOTOGRAPHS







SCHEMATICS

Please refer to attached sheets.

BLOCK DIAGRAM

Please refer to attached sheets.

USER'S MANUAL

Please refer to attached sheets.

END OF REPORT