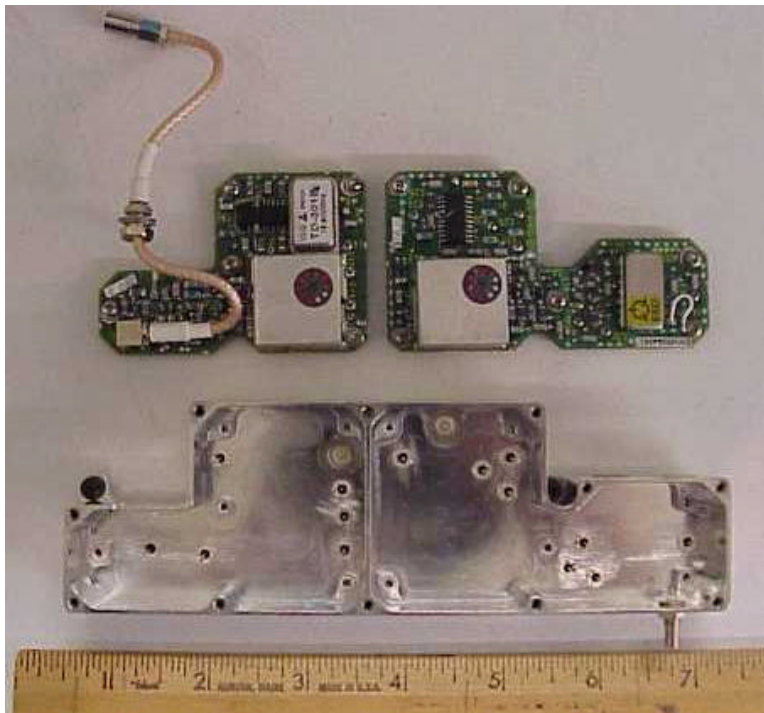
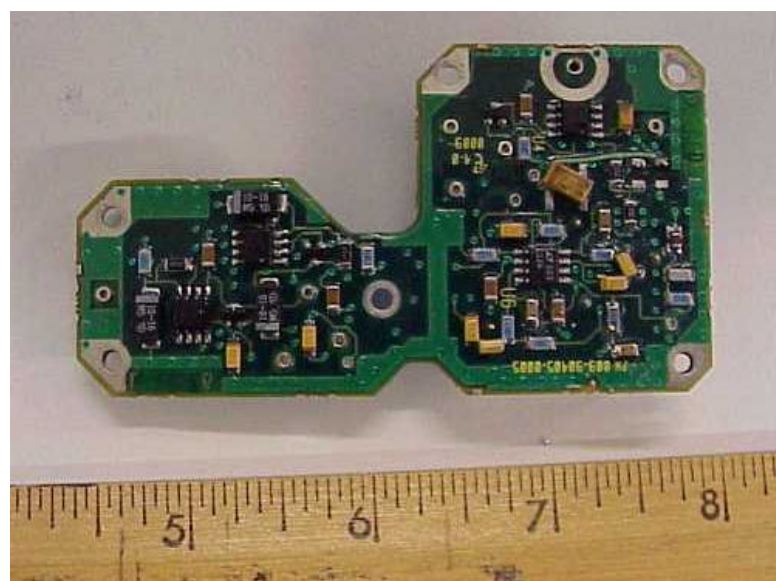
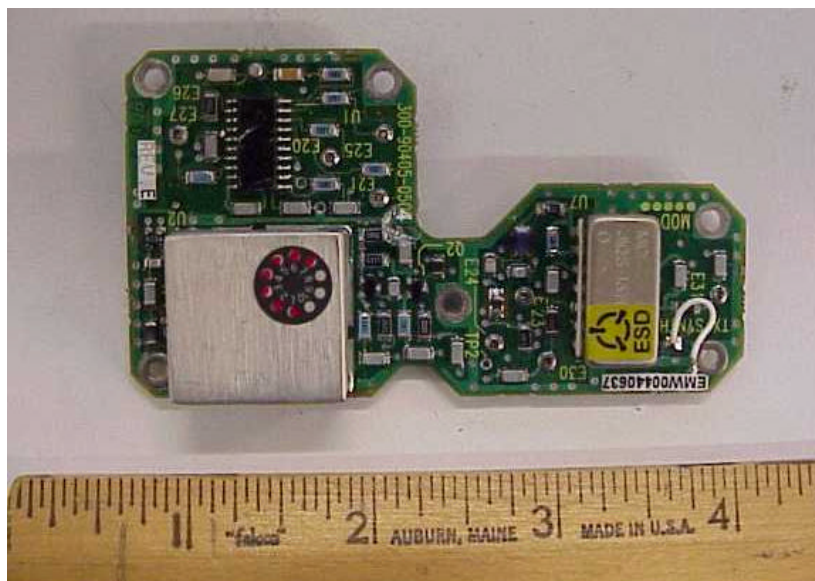


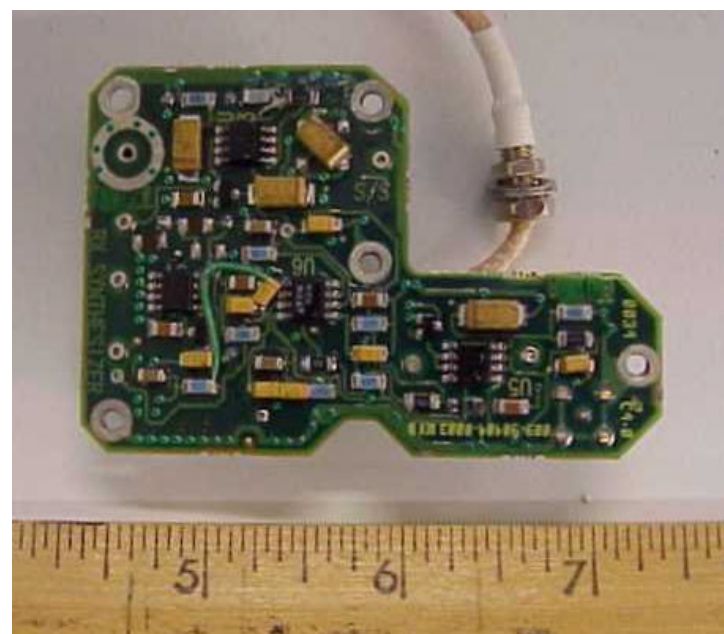
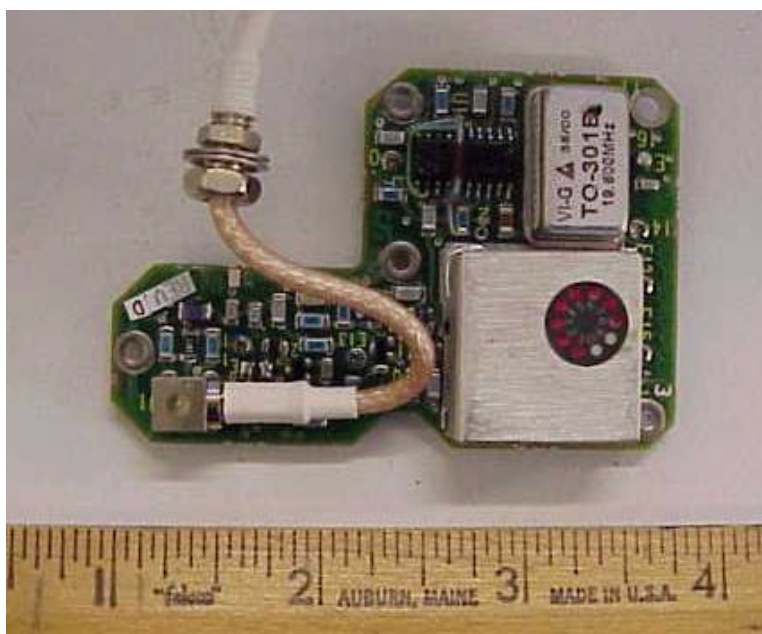
TX and RX Synthesizers Module – bottom and top views



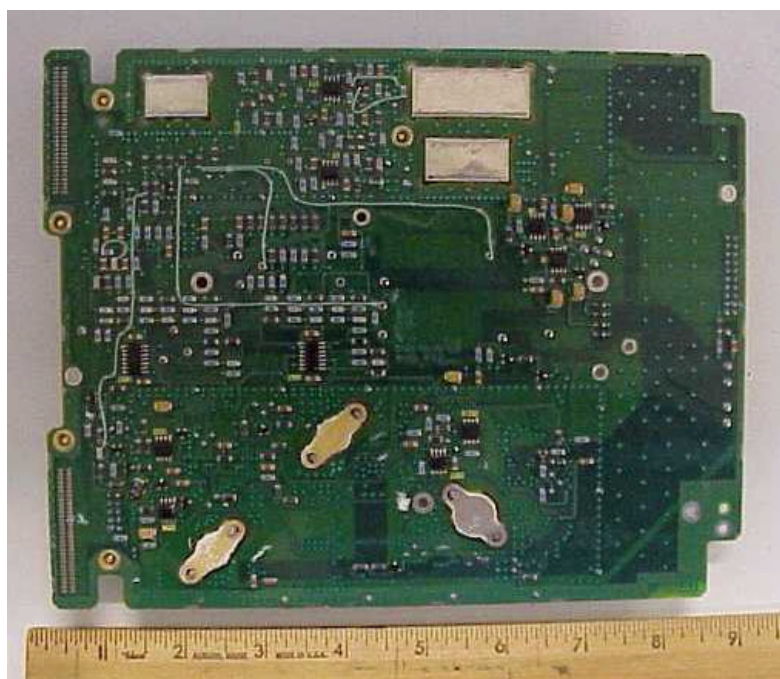
TX and RX Synthesizer Boards removed from Synthesizers Module



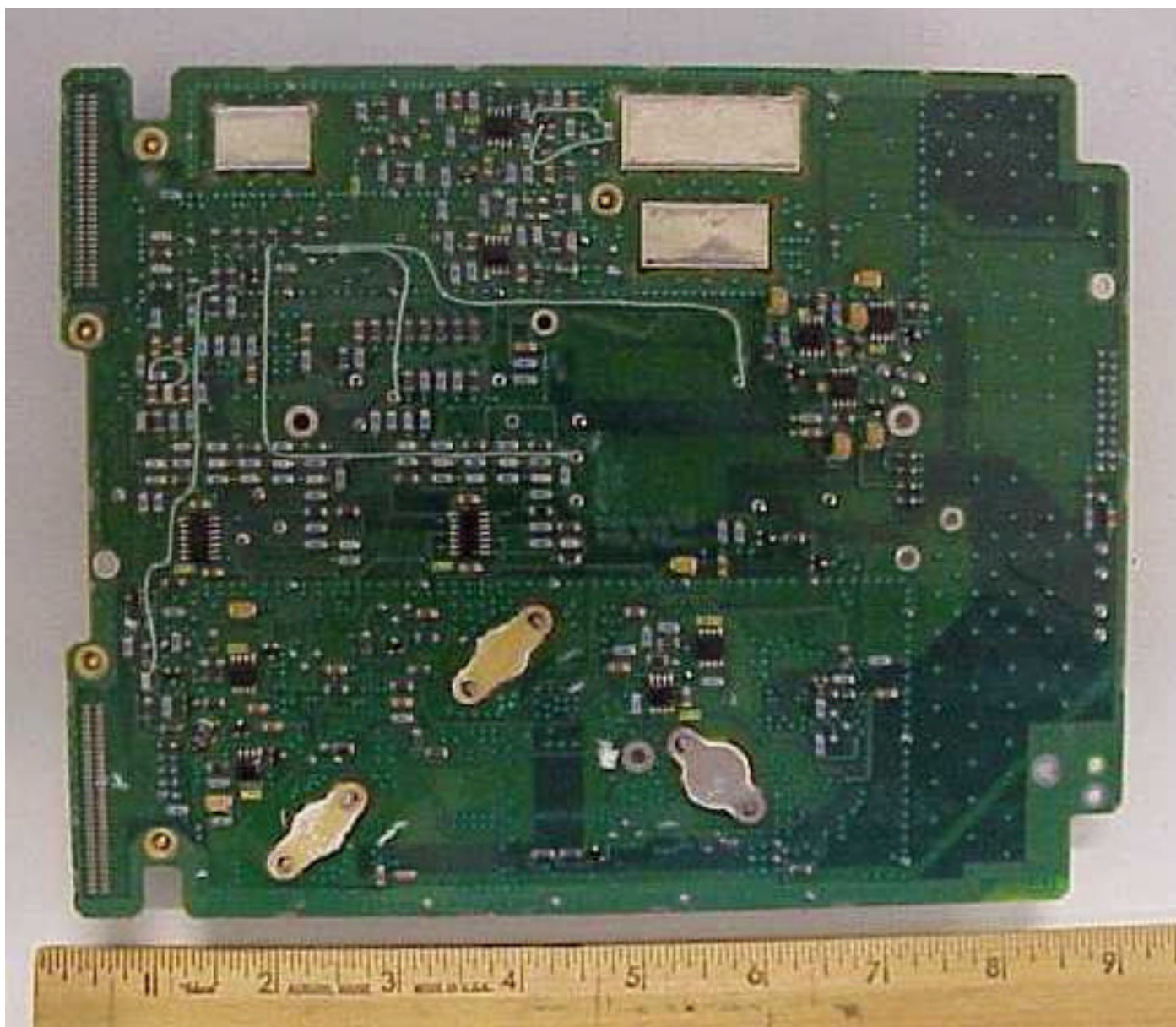
TX Synthesizer Boards – top and bottom views



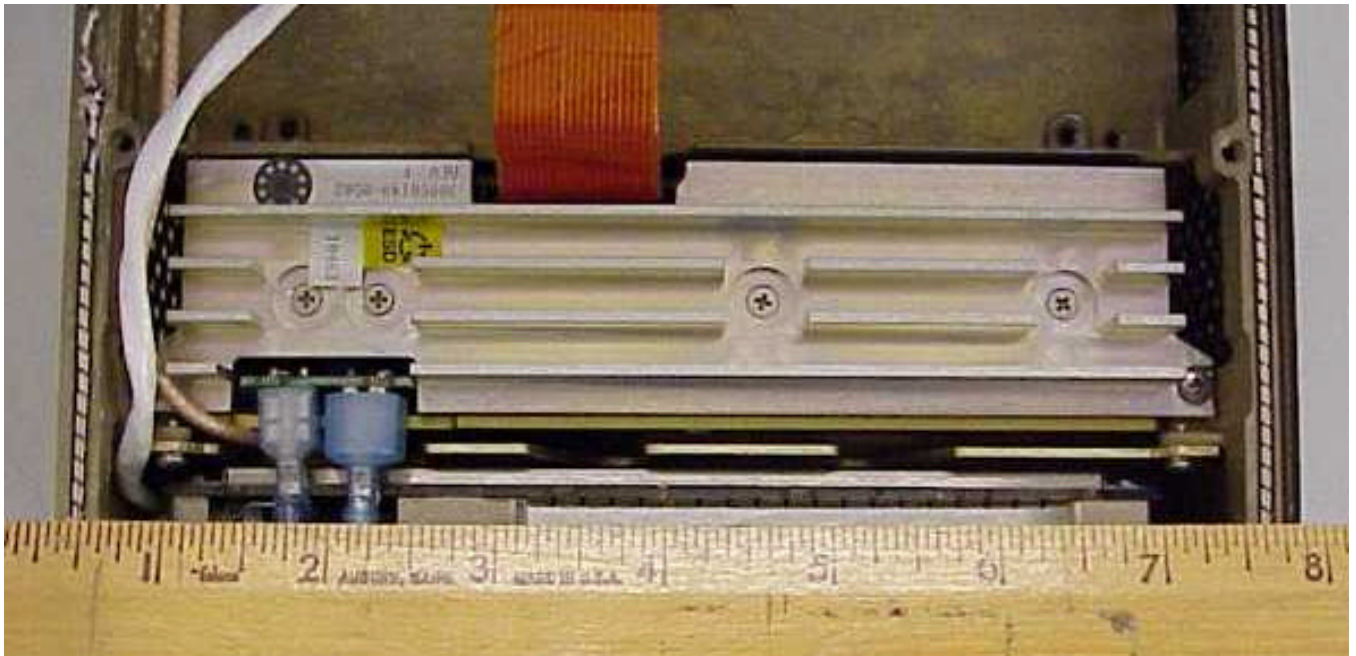
RX Synthesizer Boards – top and bottom views



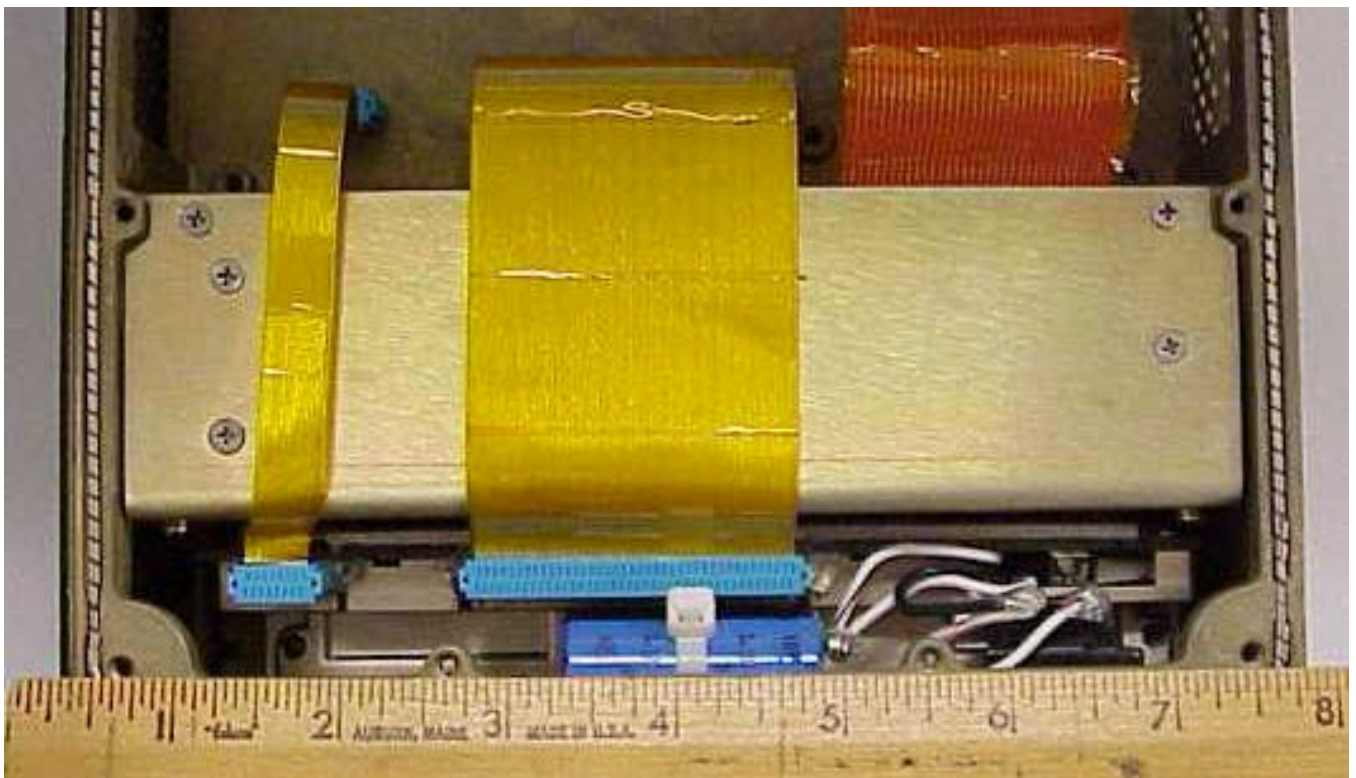
Bottom Side of Main RF Board with Heatsink (right) removed .



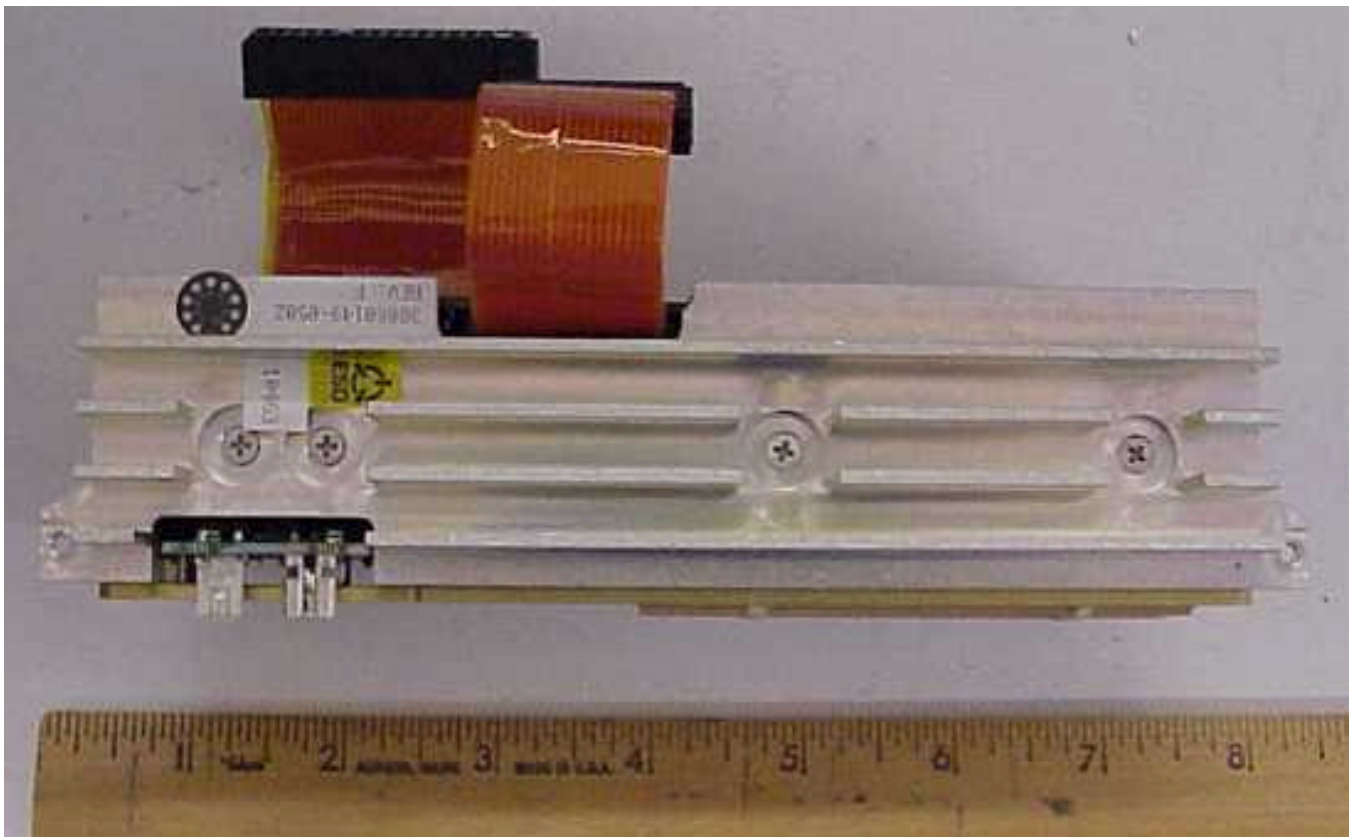
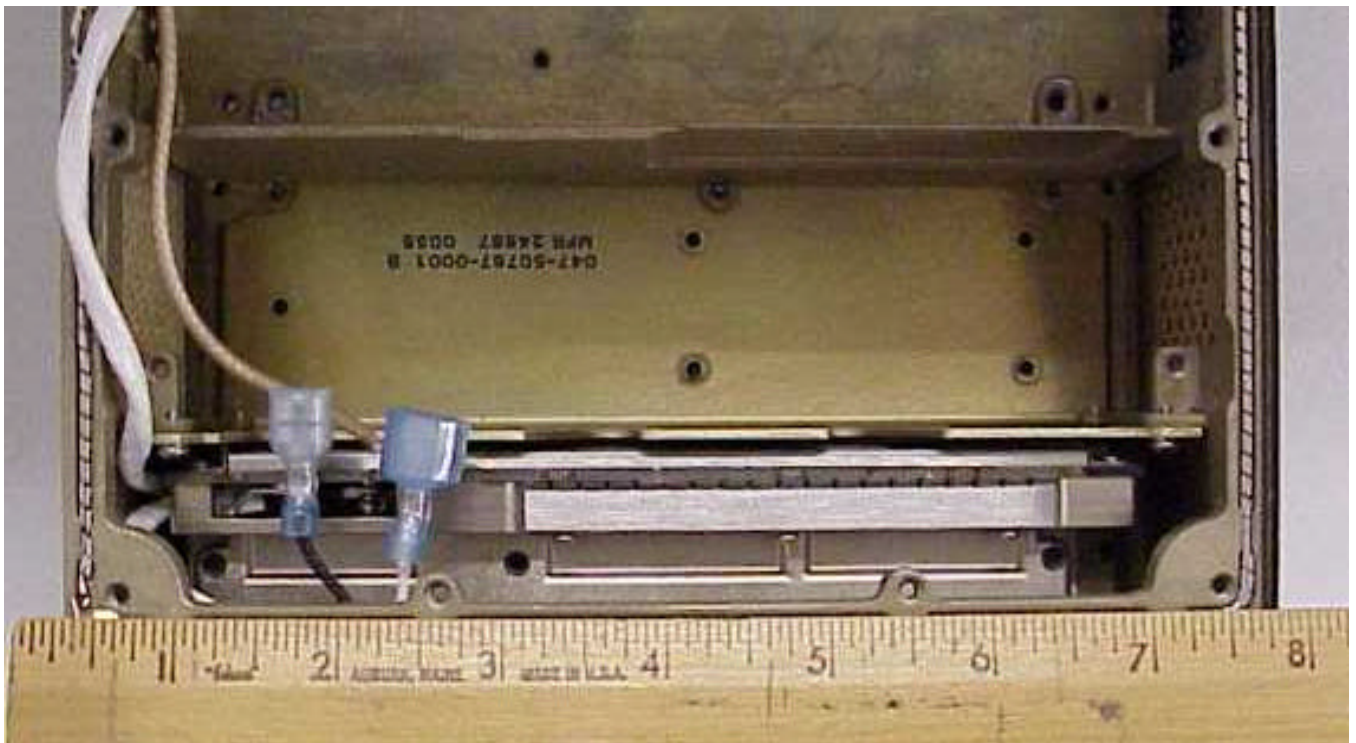
Bottom Side of Main RF Board.



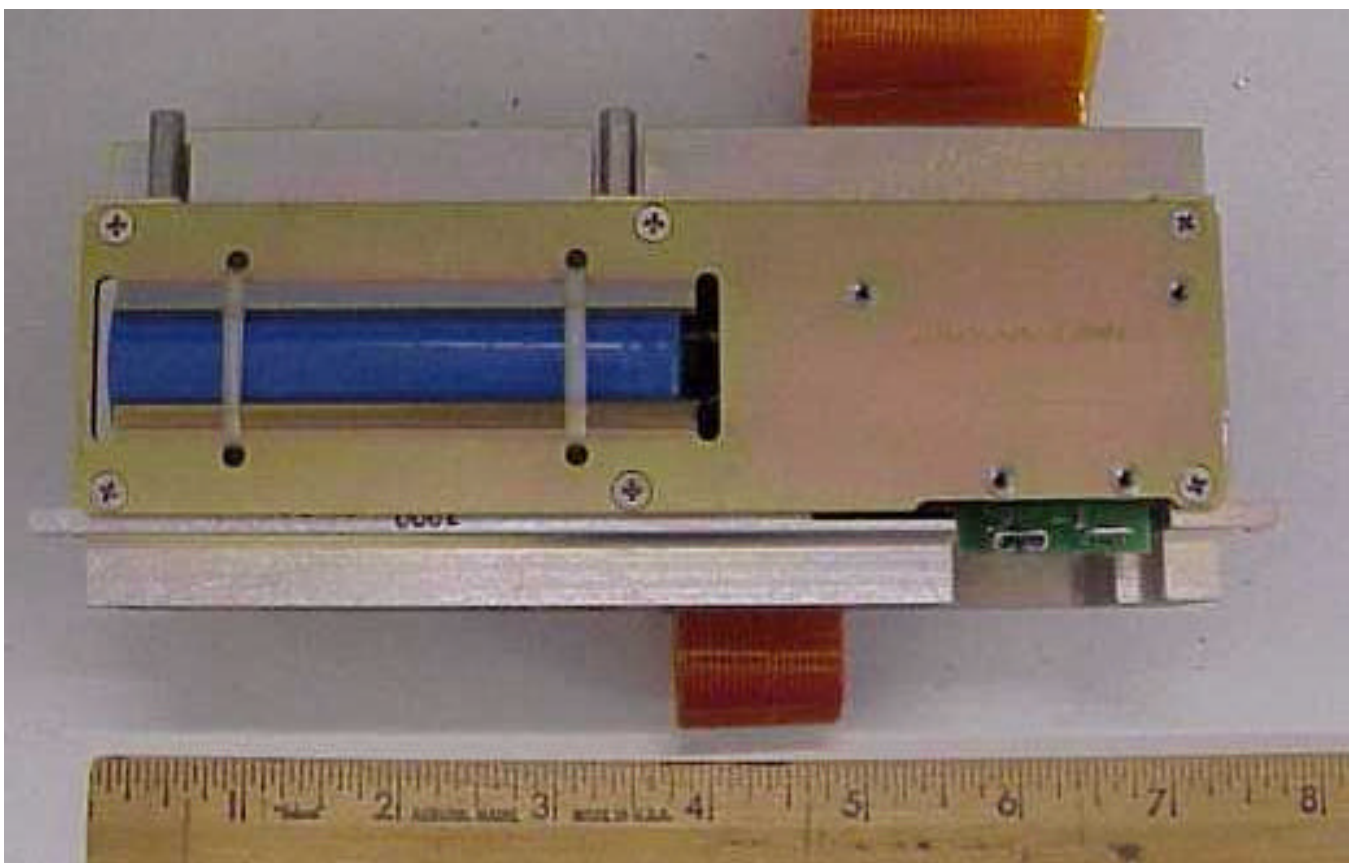
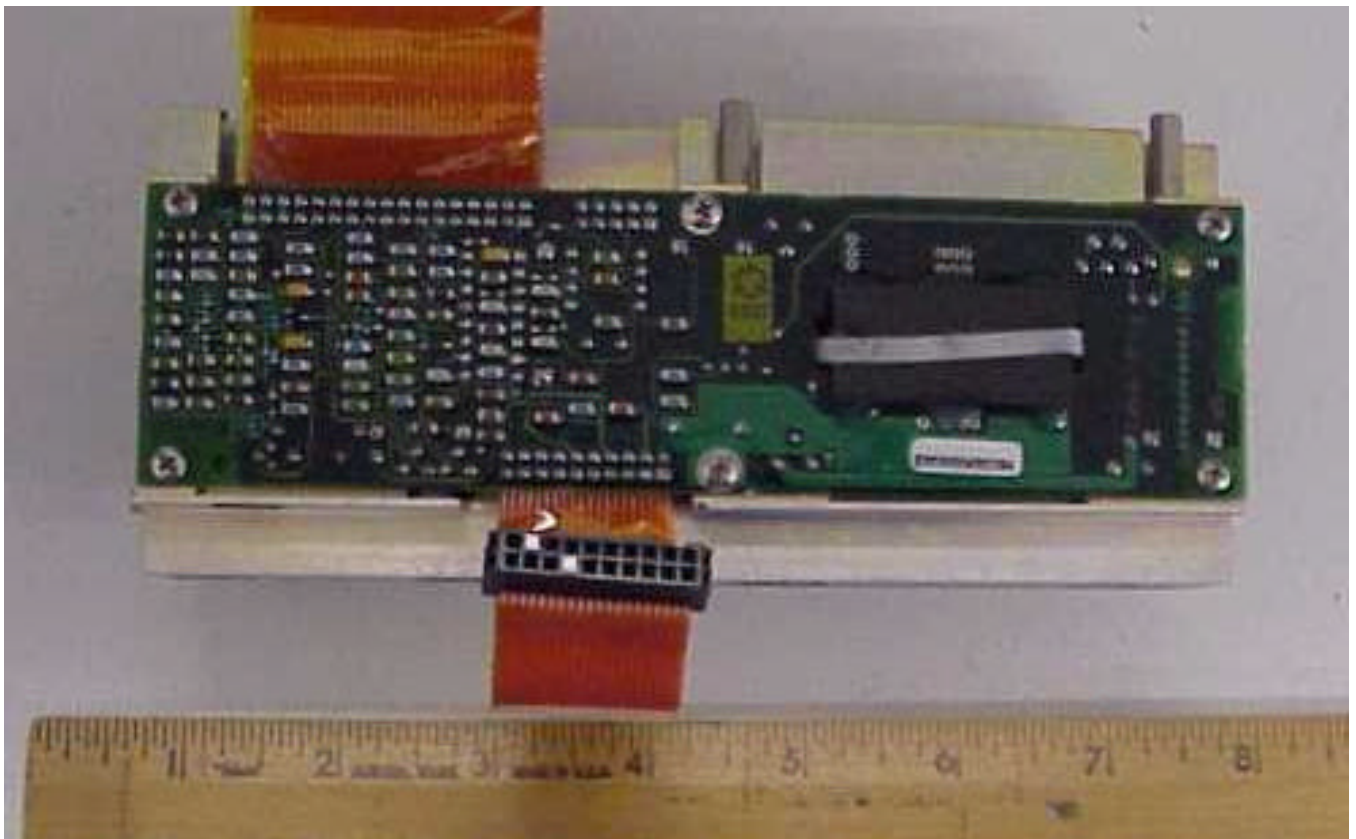
Power Supply Assembly as viewed from Right (RF Module) Side of unit.



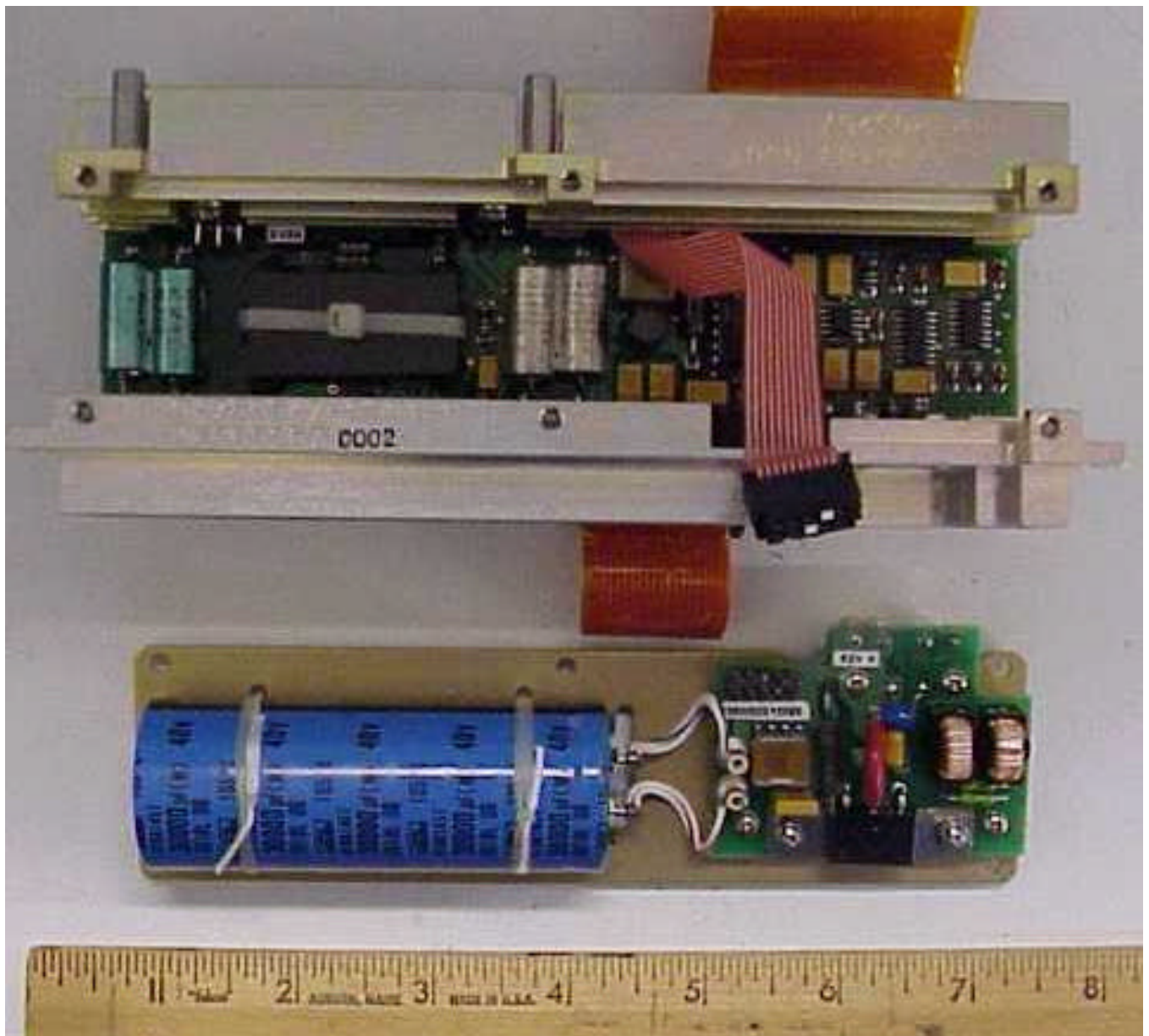
Power Supply Assembly as viewed from Left (Digital Module) Side of unit.



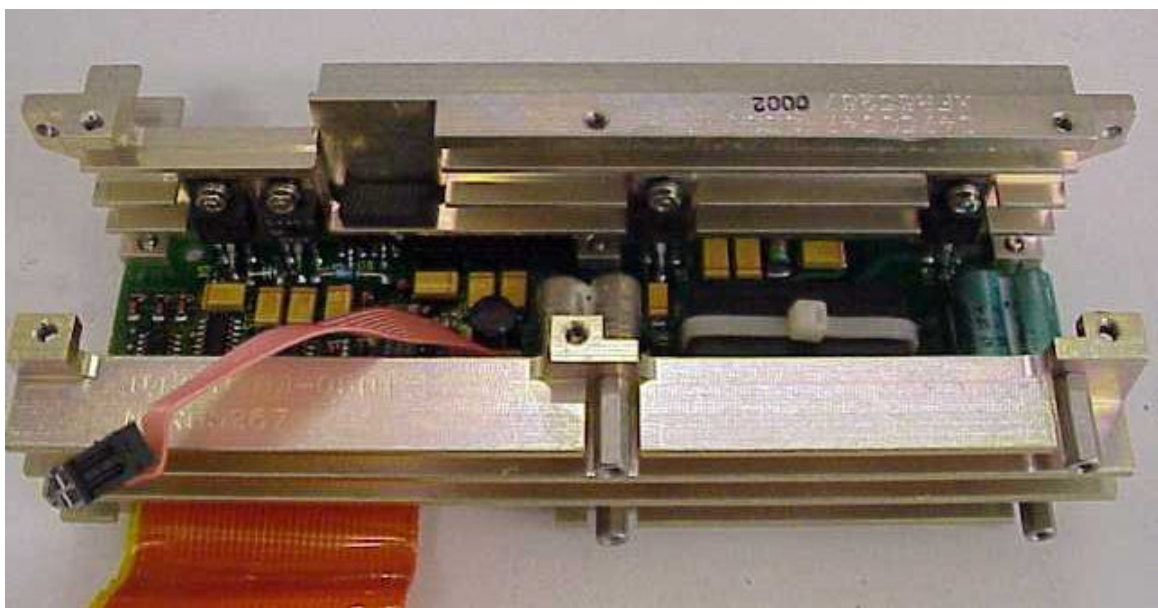
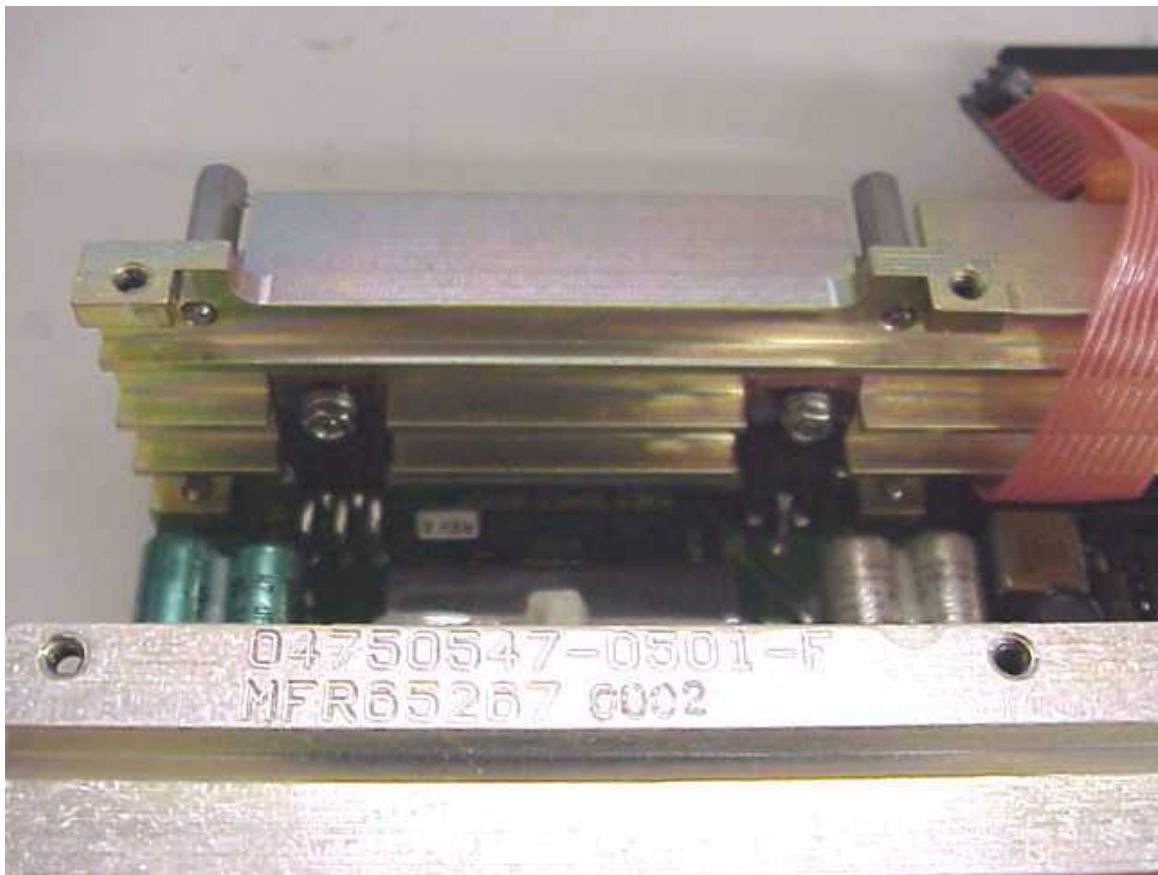
Power Supply Assembly removed from unit



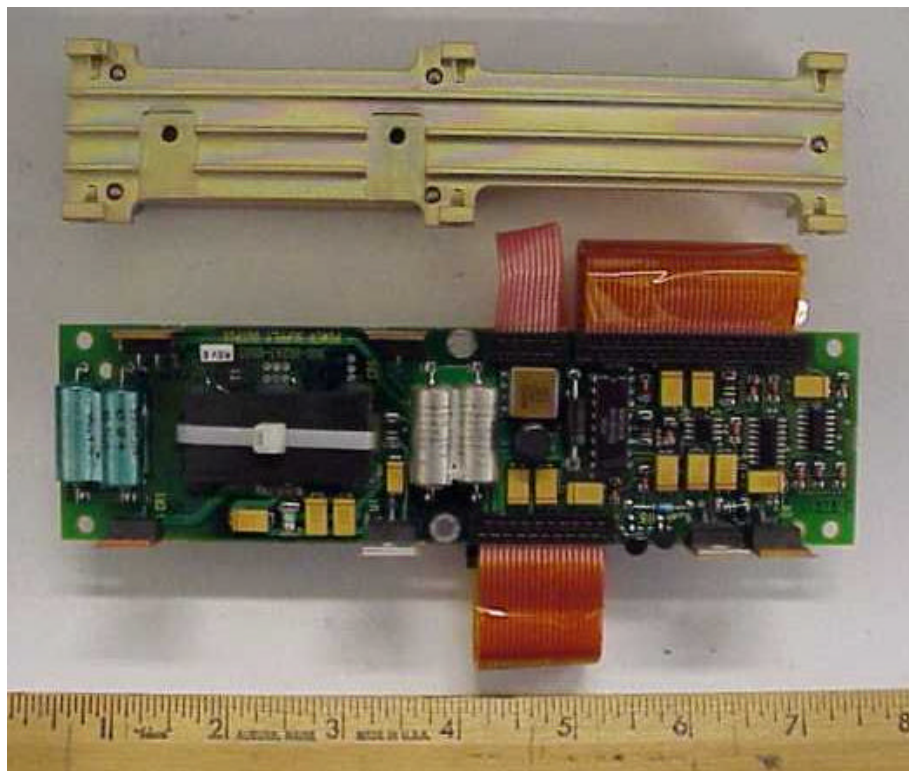
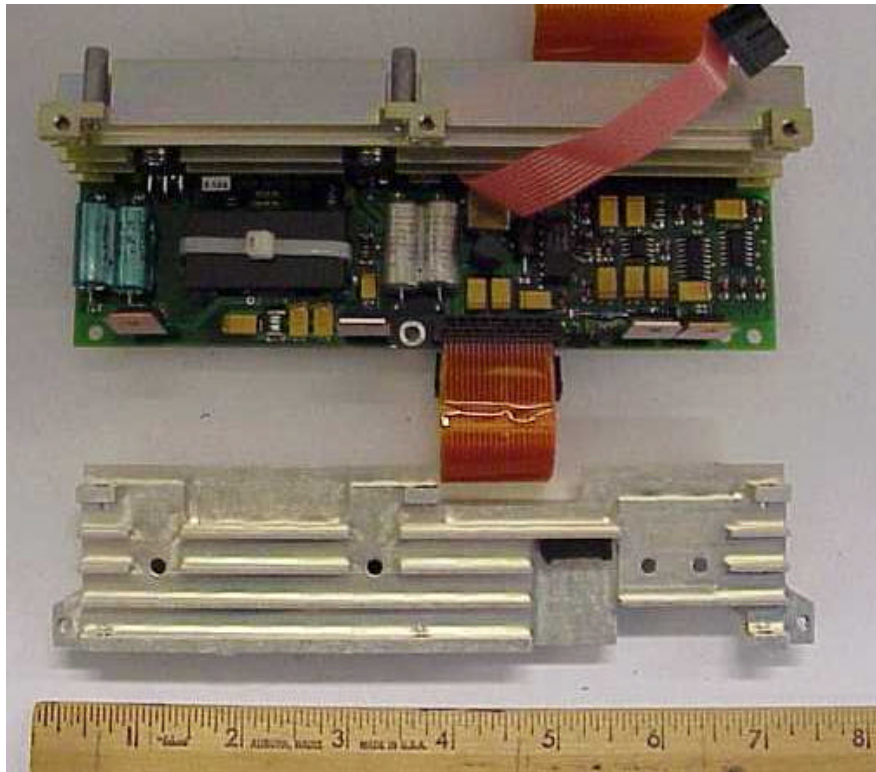
Other views of Power Supply Assembly



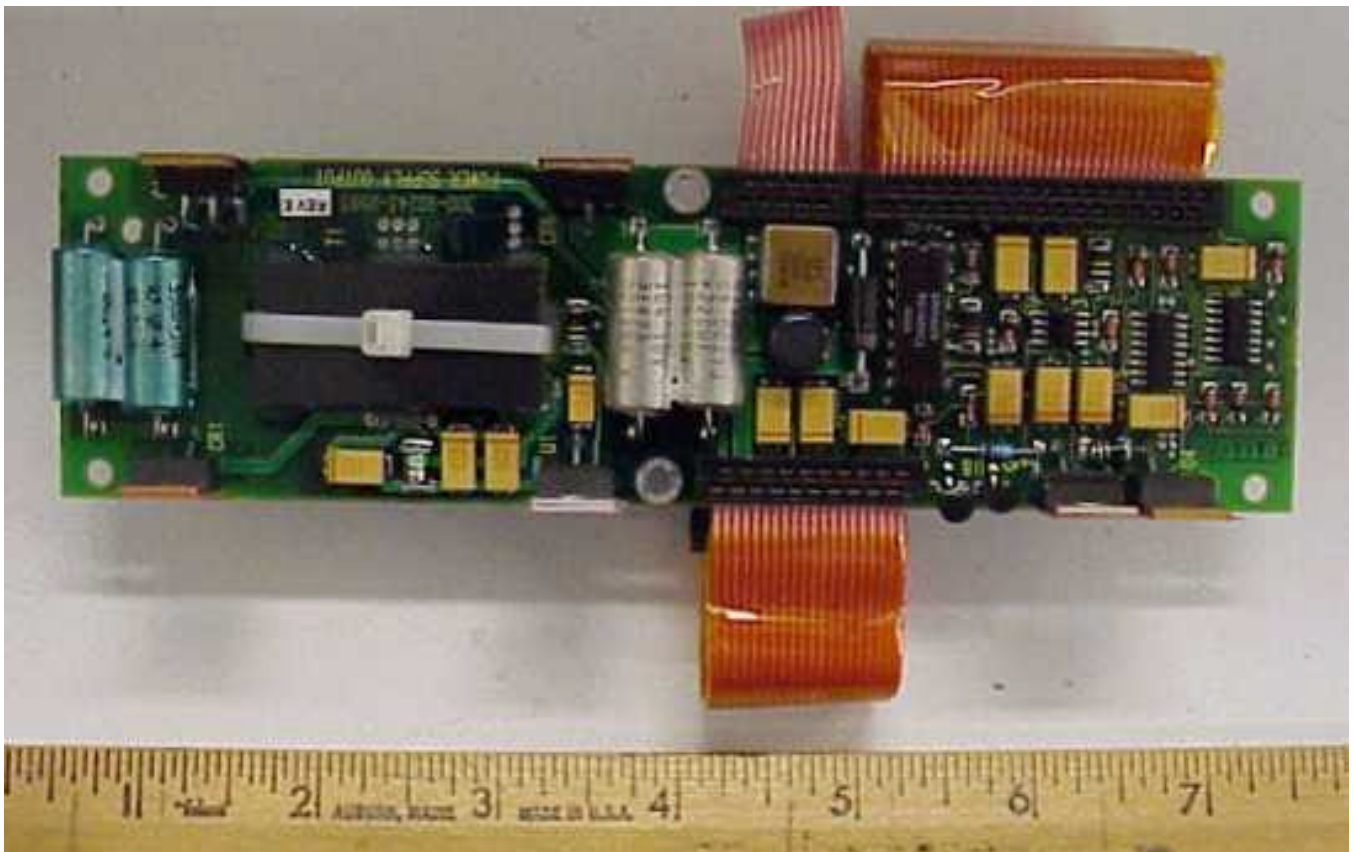
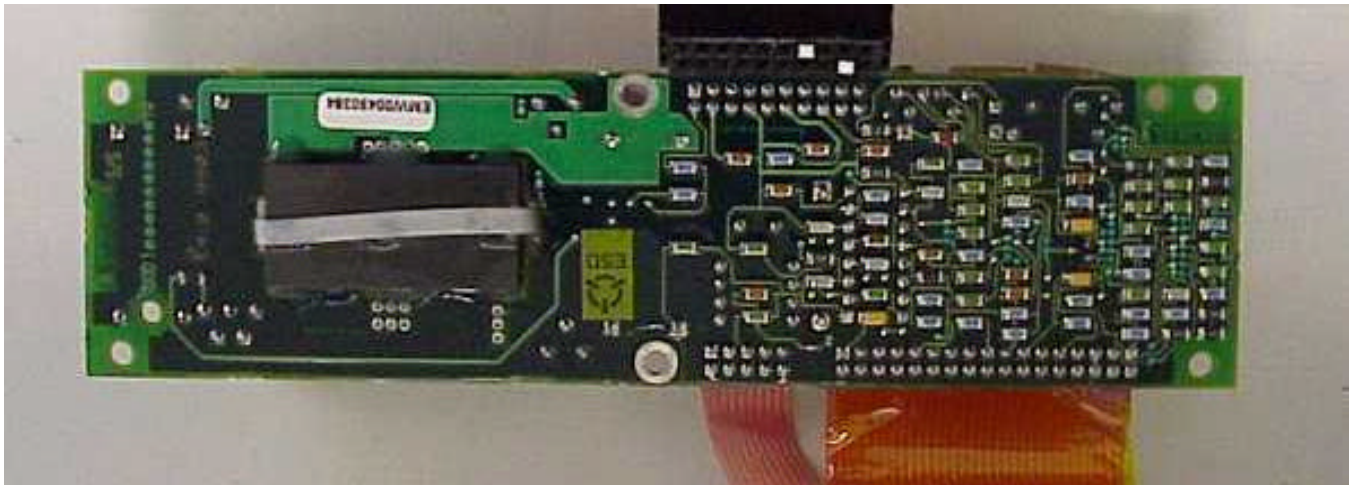
Power Supply Assembly with Capacitor Module detached.



Views of components within power supply module attached to heatsink.



Heatsinks of Power Supply Assembly removed, exposing Power Supply board.



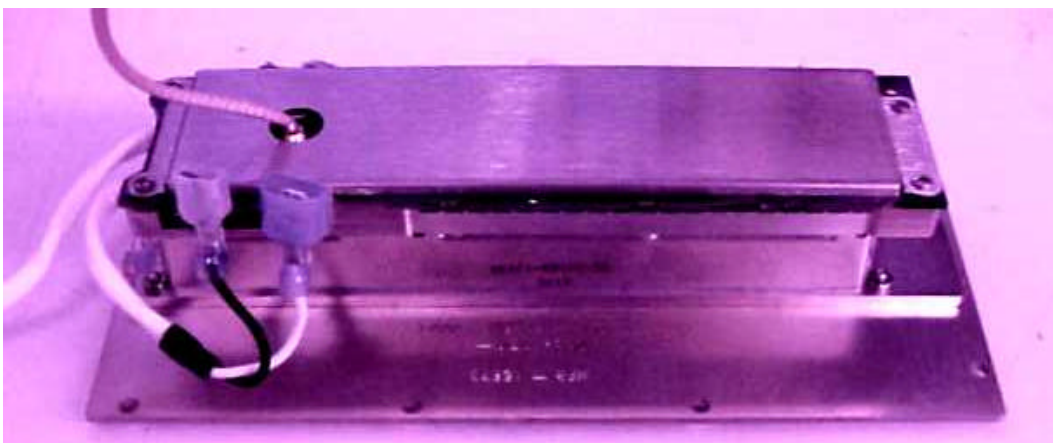
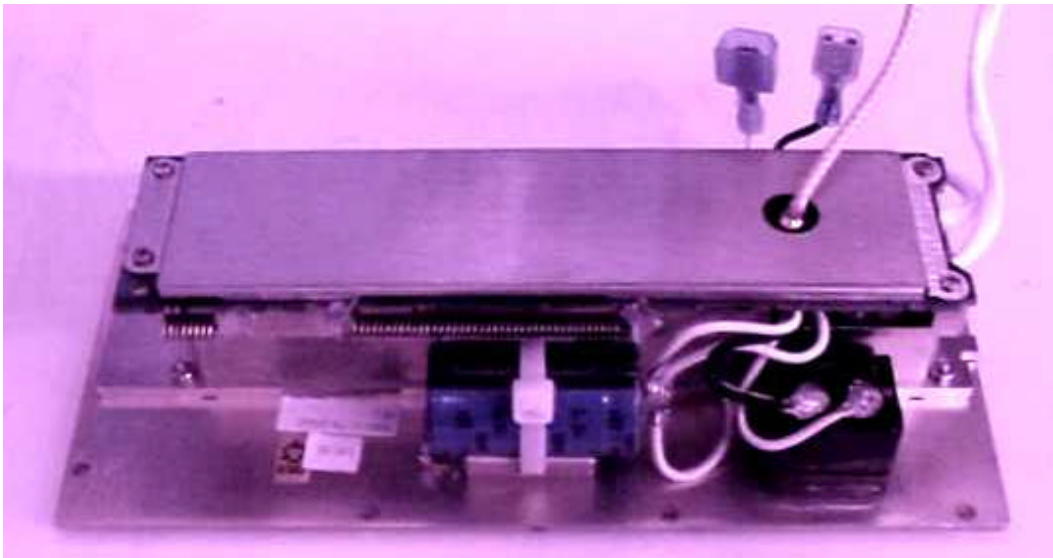
Bottom and Top views of Power Supply board.



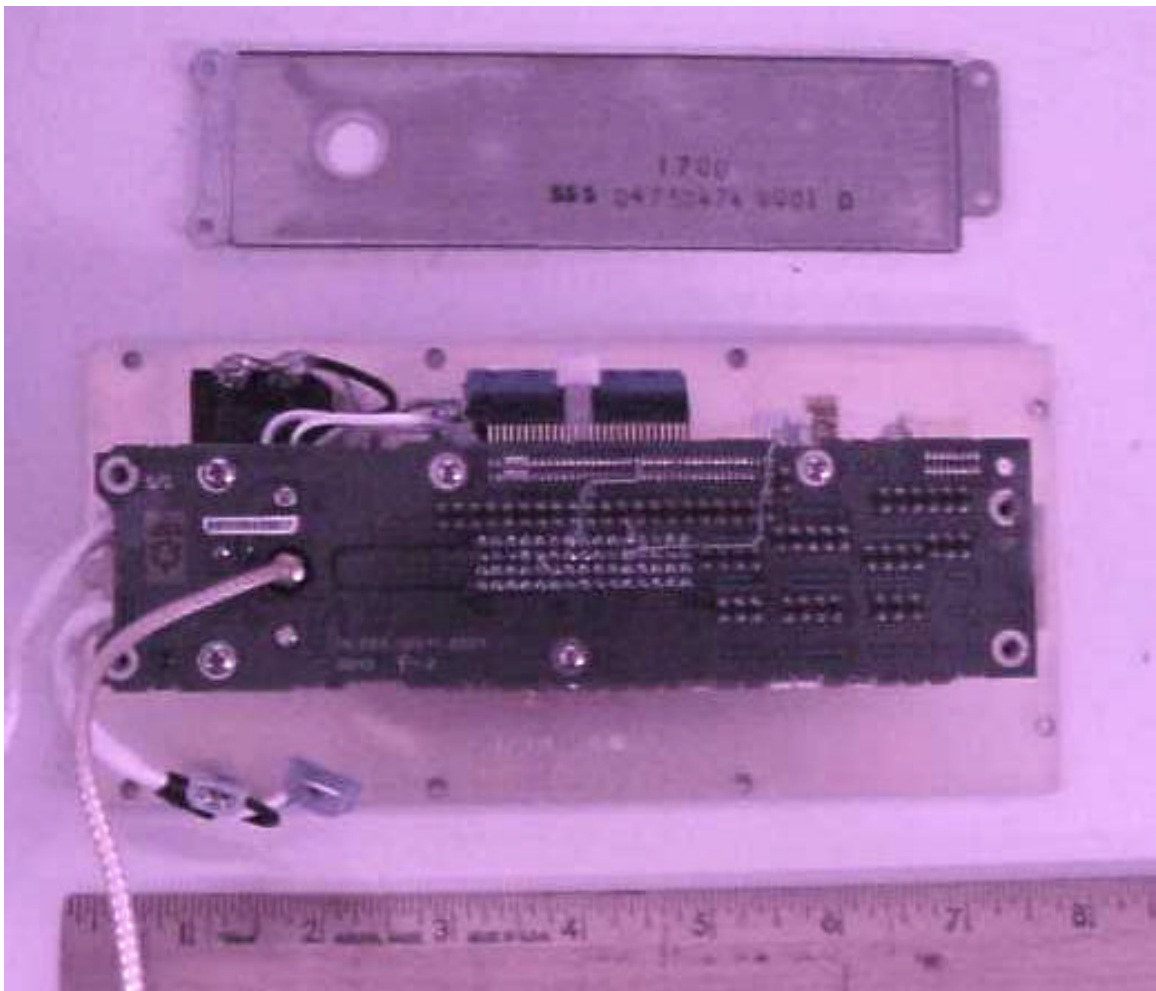
Rear Interconnect Module as part of LRU.



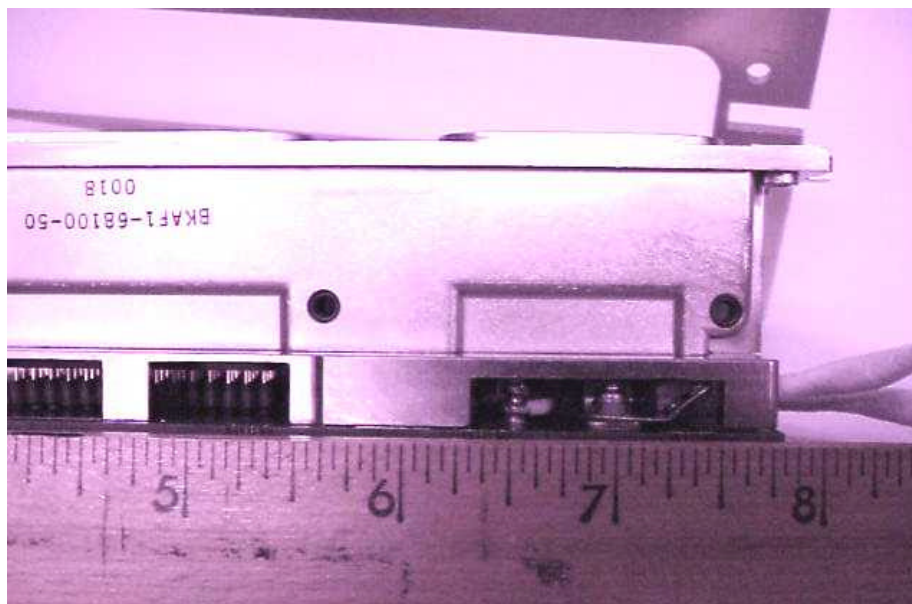
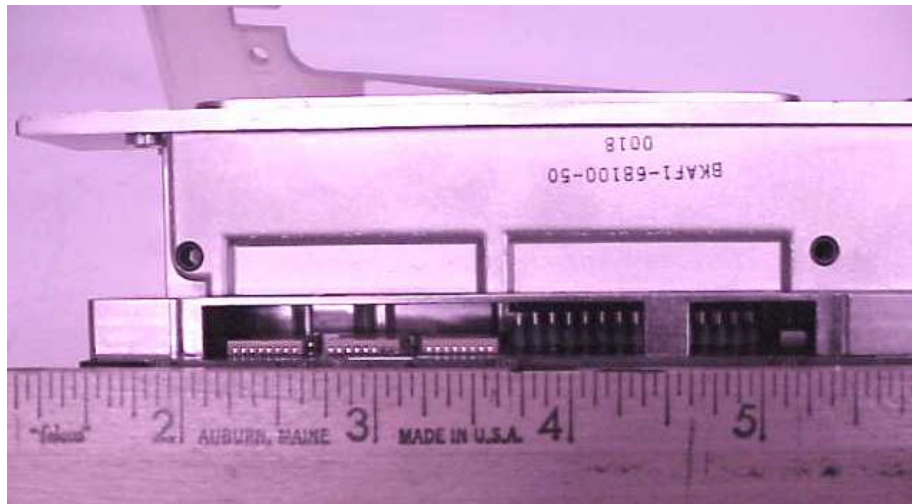
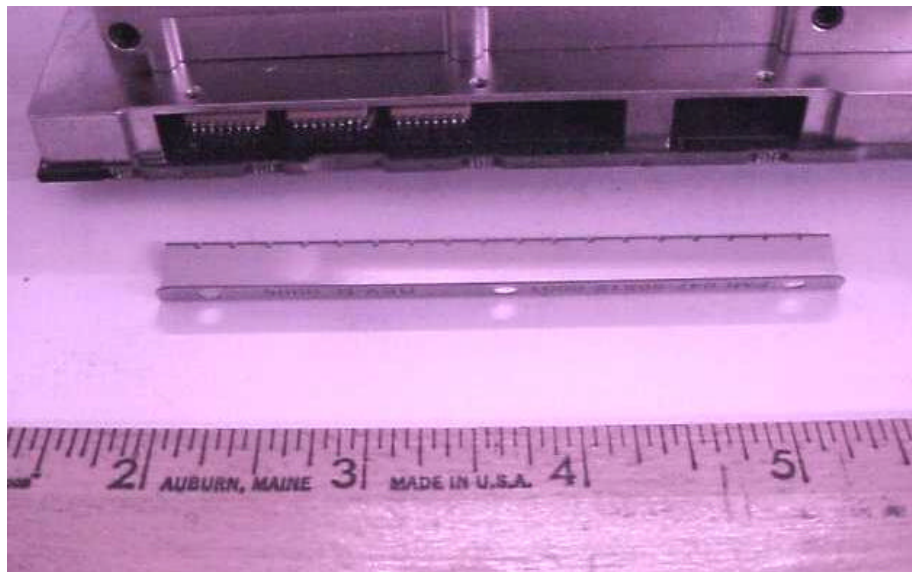
Rear Interconnect Module removed from LRU.



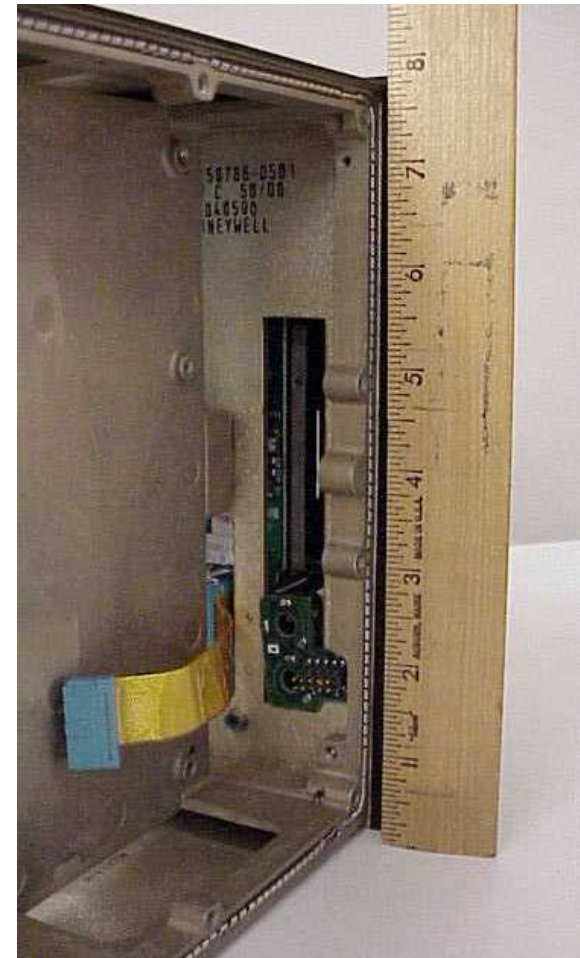
Other views of Rear Interconnect Module.



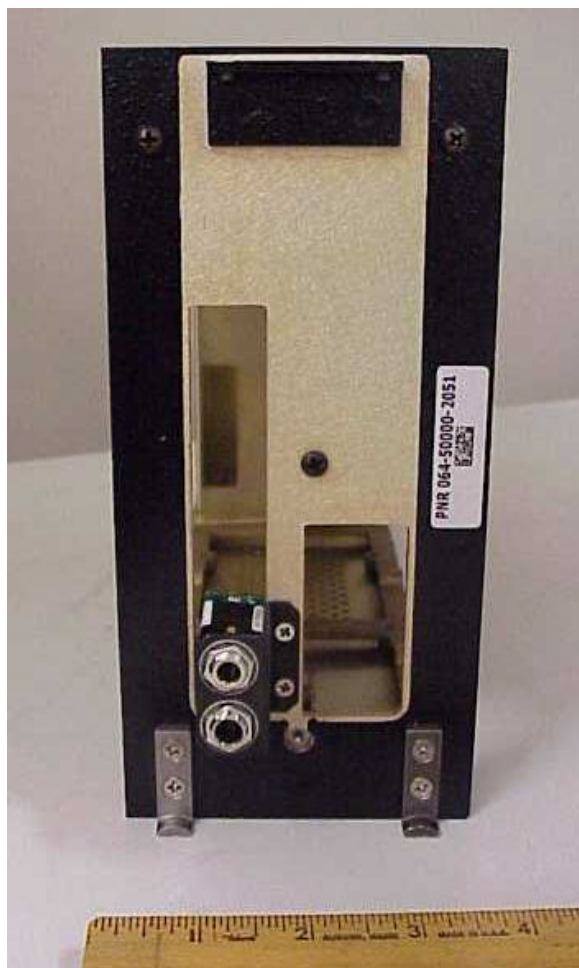
Cover and rear plate removed from Rear Interconnect Module.



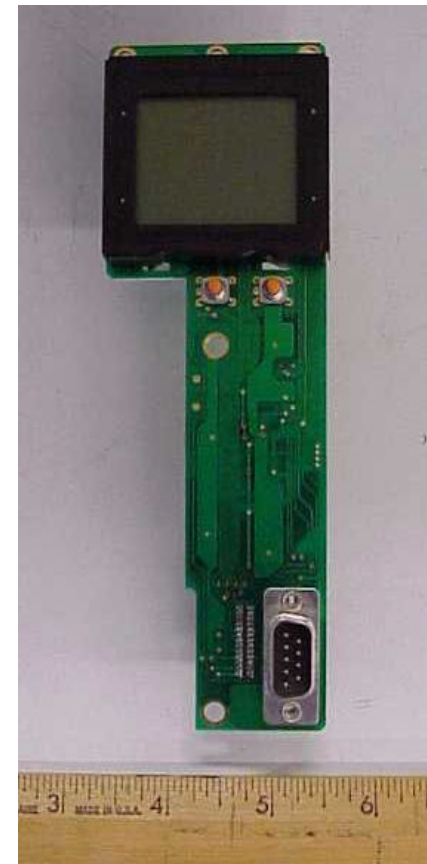
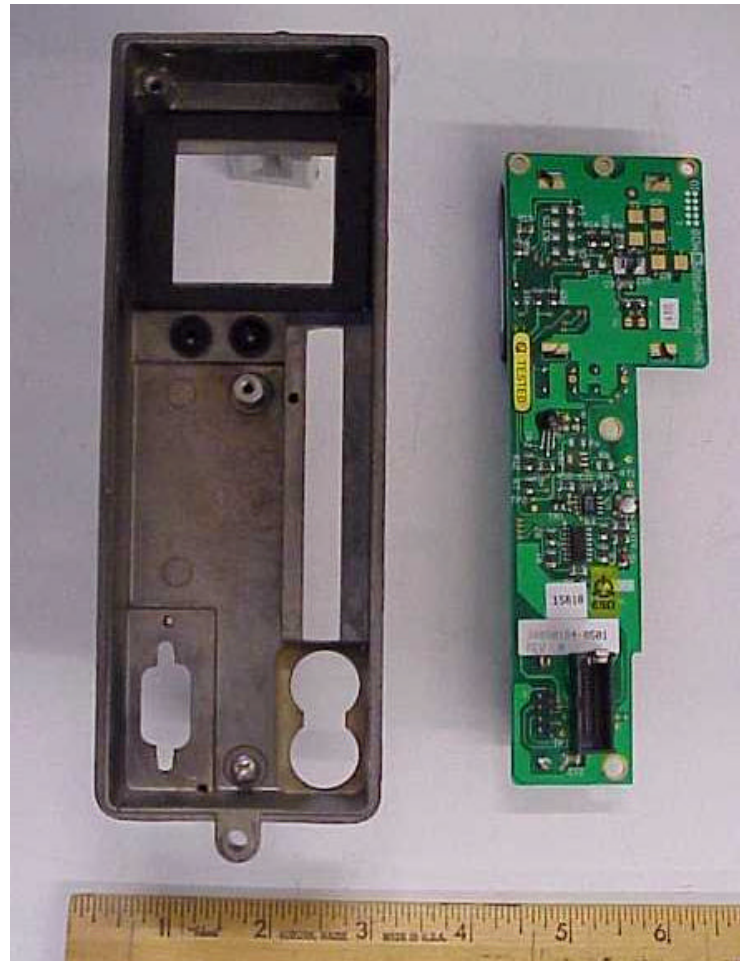
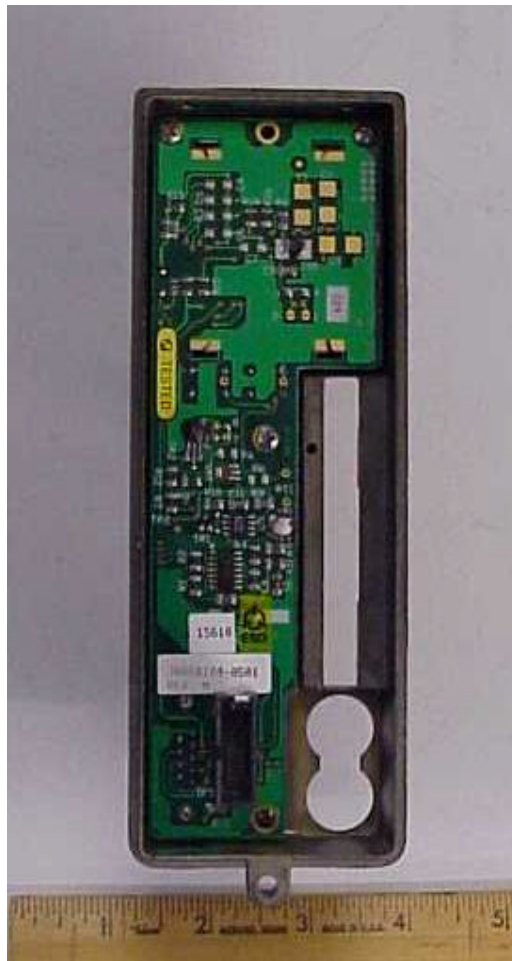
Connector interface of the Rear Interconnect Module.



Front Panel Assembly as part of LRU (exterior front and interior views).



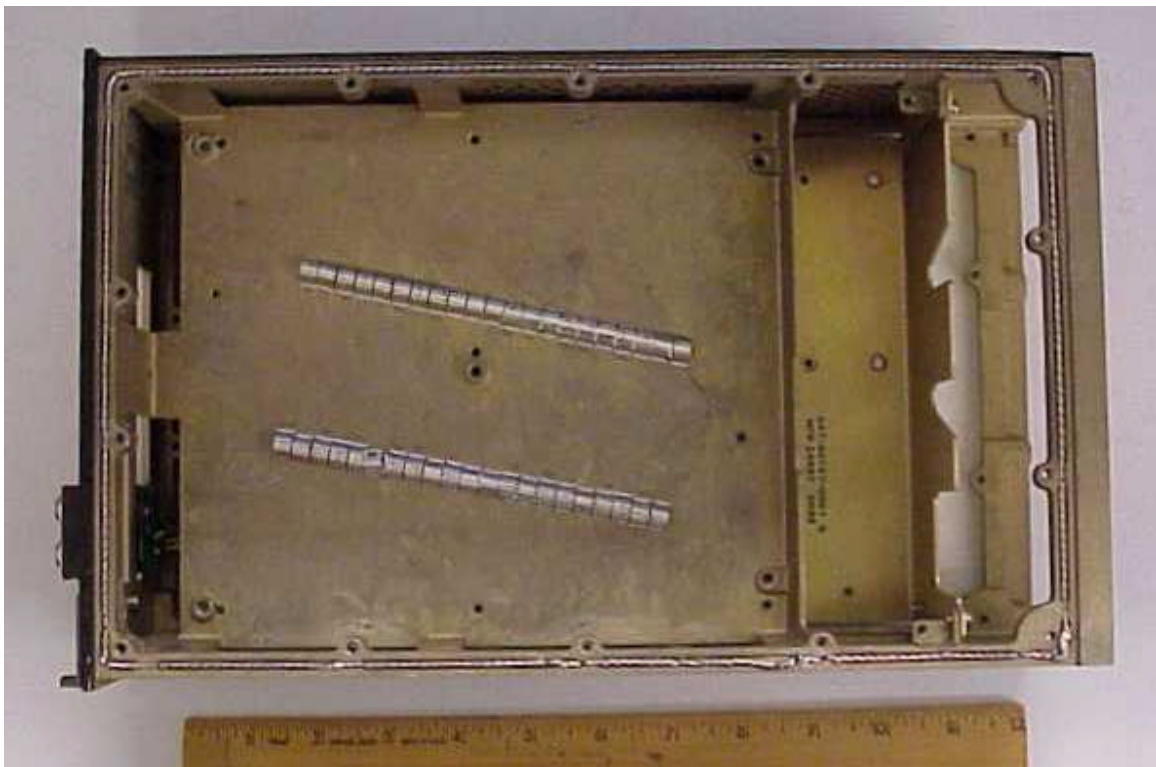
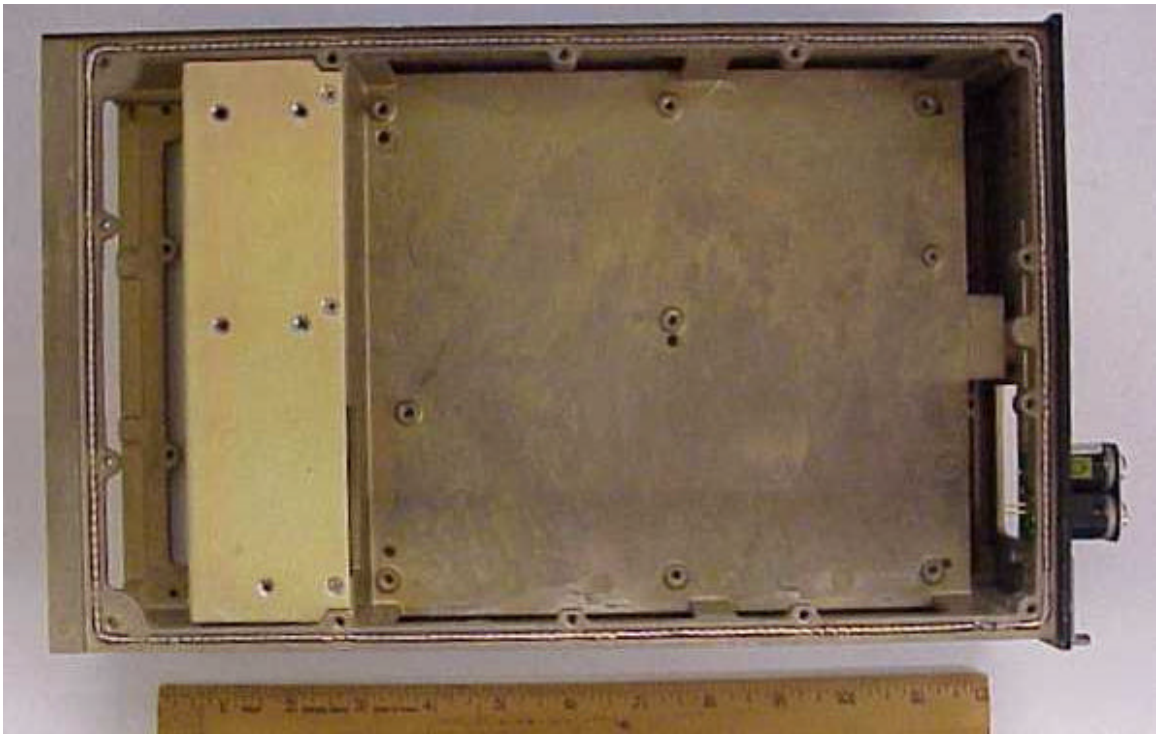
**Front Panel Assembly with PCMCIA card slot and RS232 covers removed,
and then the Front panel assembly removed from LRU chassis.**



Front Panel Assembly and circuit card.



Remaining Chassis when all assemblies have been removed



Remaining Chassis when all assemblies have been removed