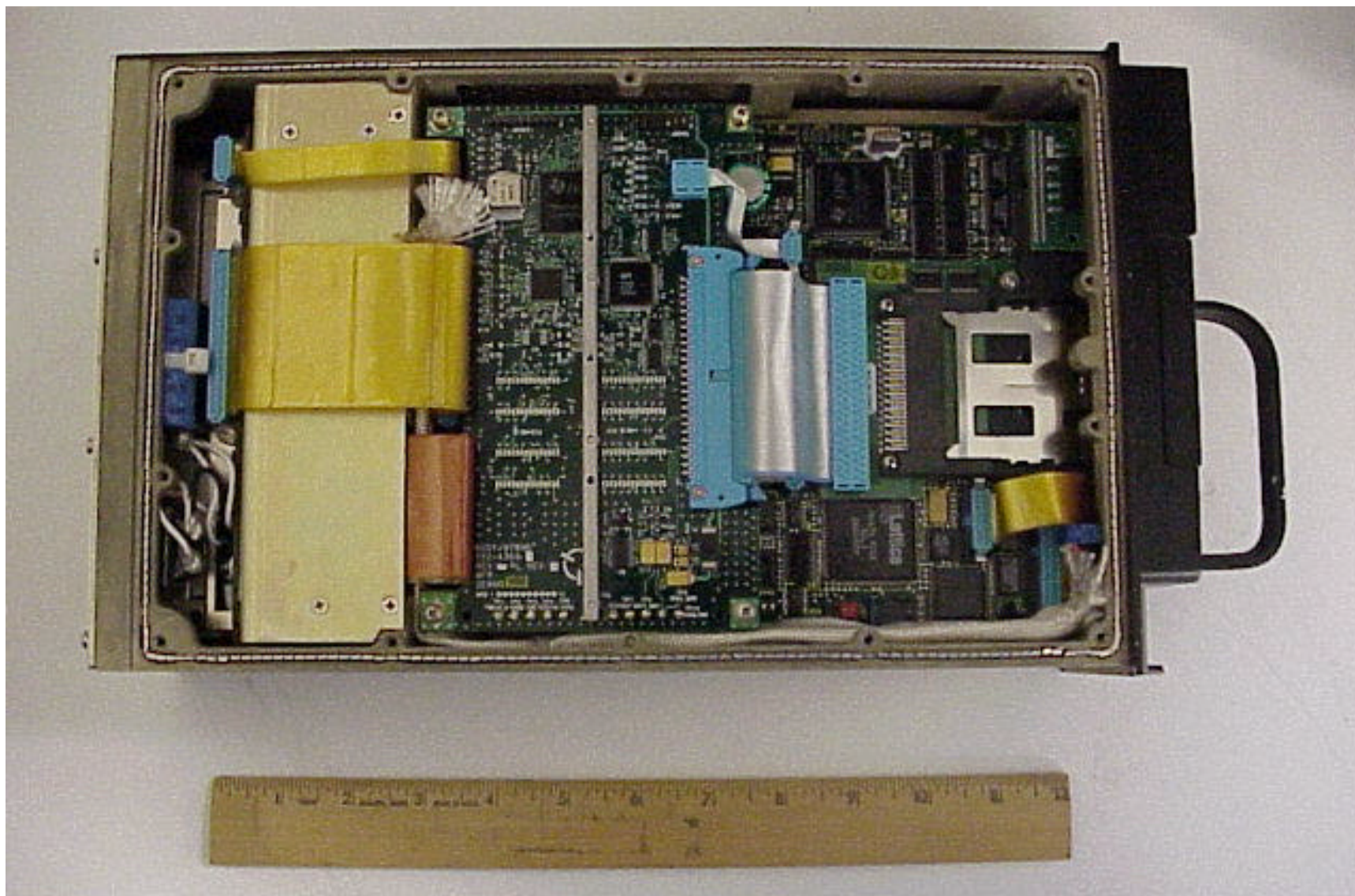


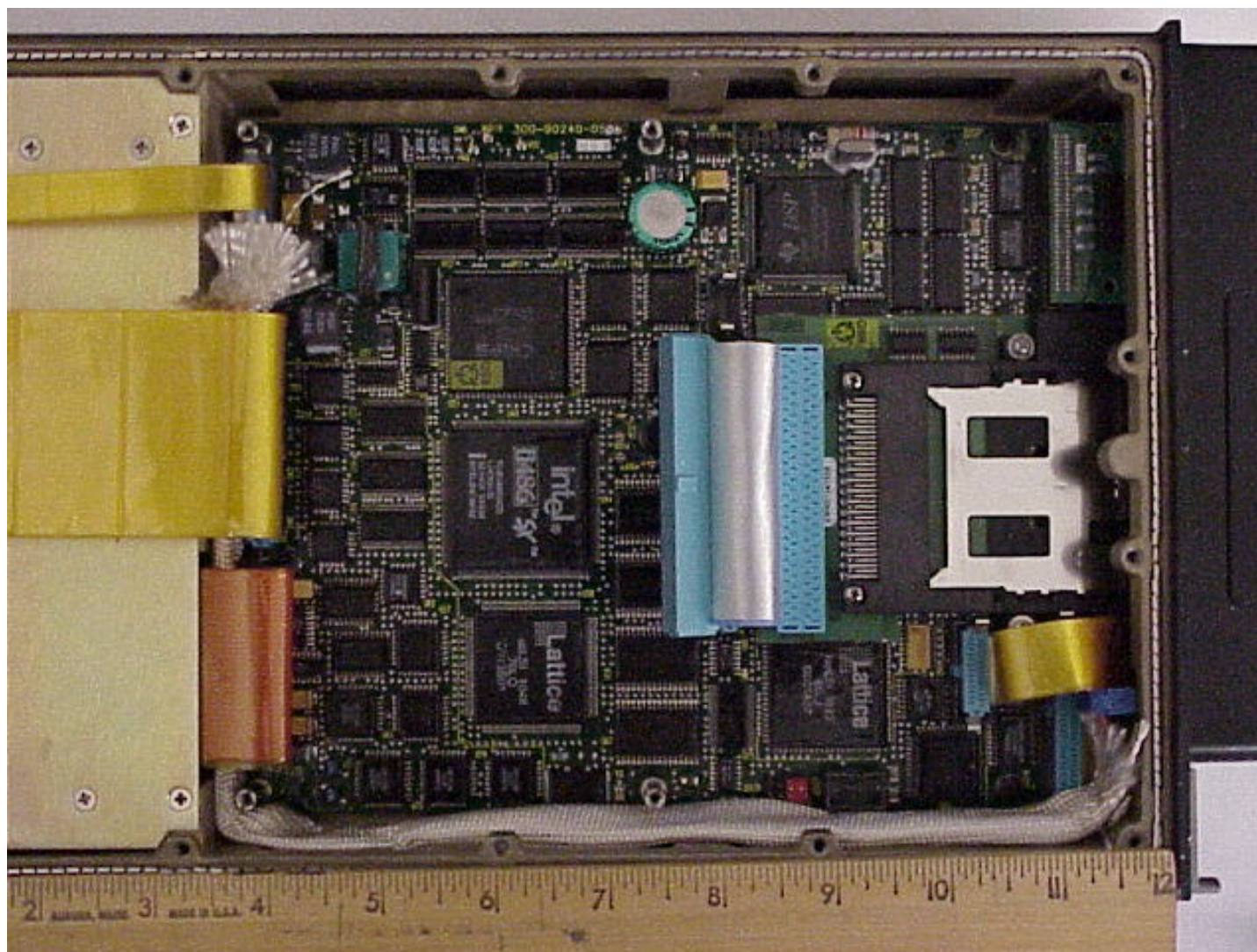
**Internal Photos of**

**RTA-44D VHF Data Radio,**  
**Honeywell PN 064-50000-2000, -2051**  
**FCCID: AOIRTA-44DM2**



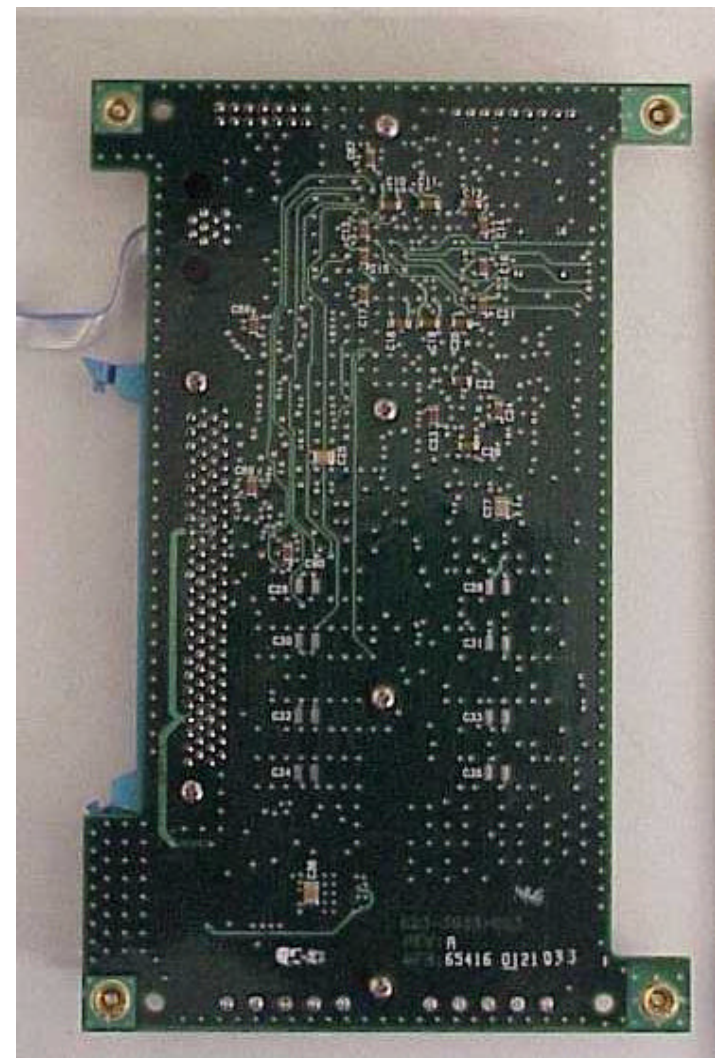
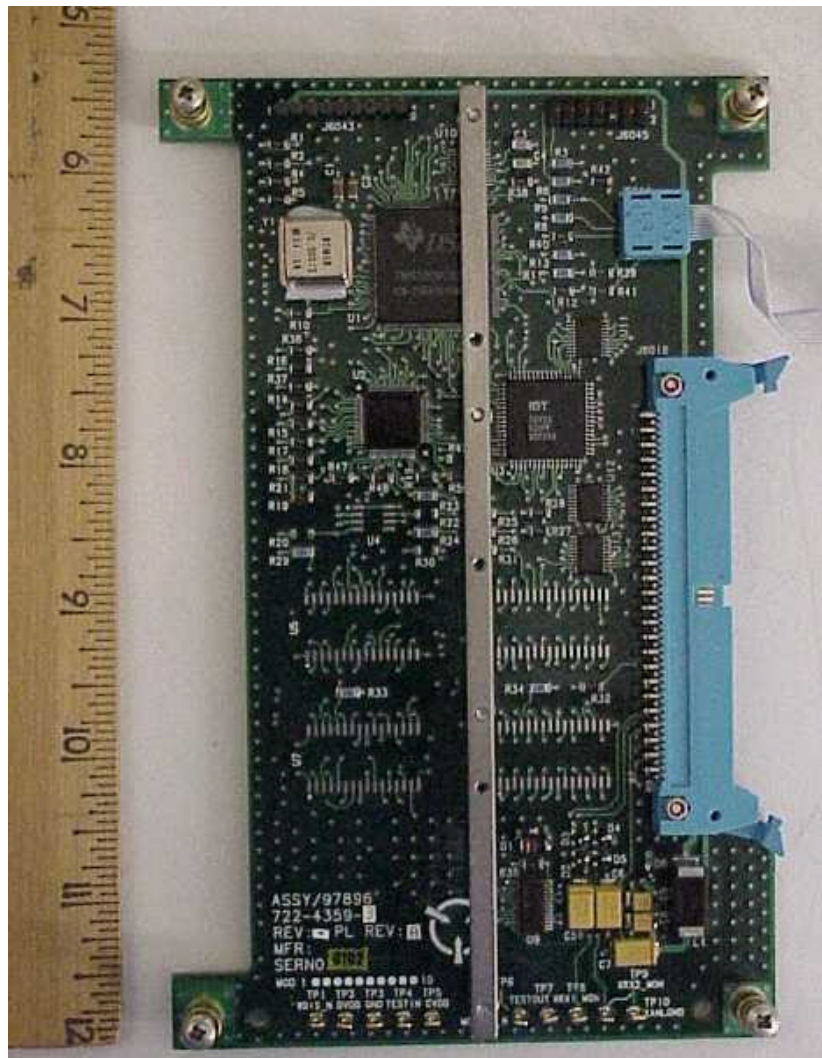
**Left Side Cover Removed exposing Main Processor Module Card  
along with Auxillary Processor and PCMCIA interface cards**





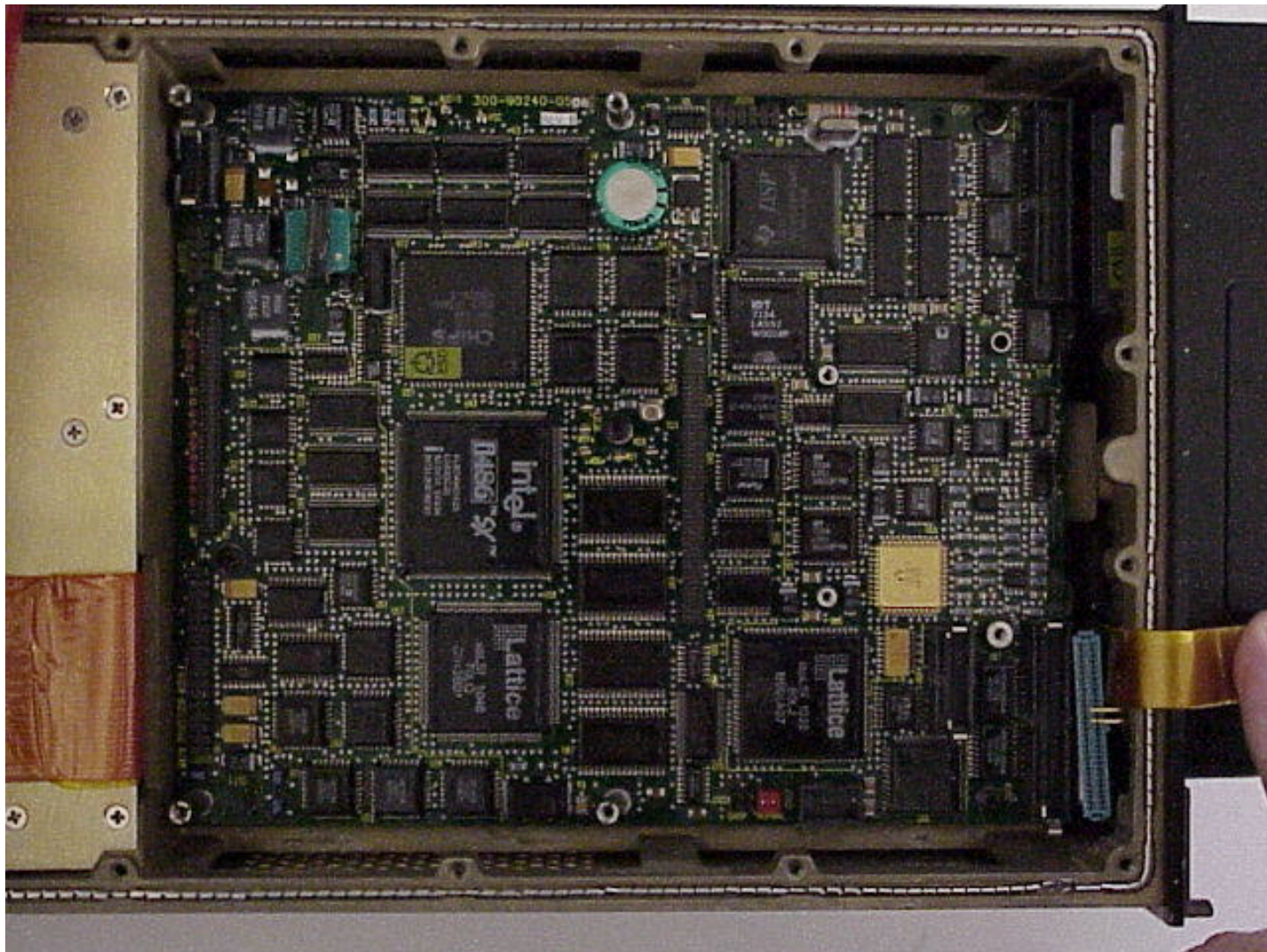
**Auxillary processor card removed, main processor module  
with PCMCIA interface card shown**



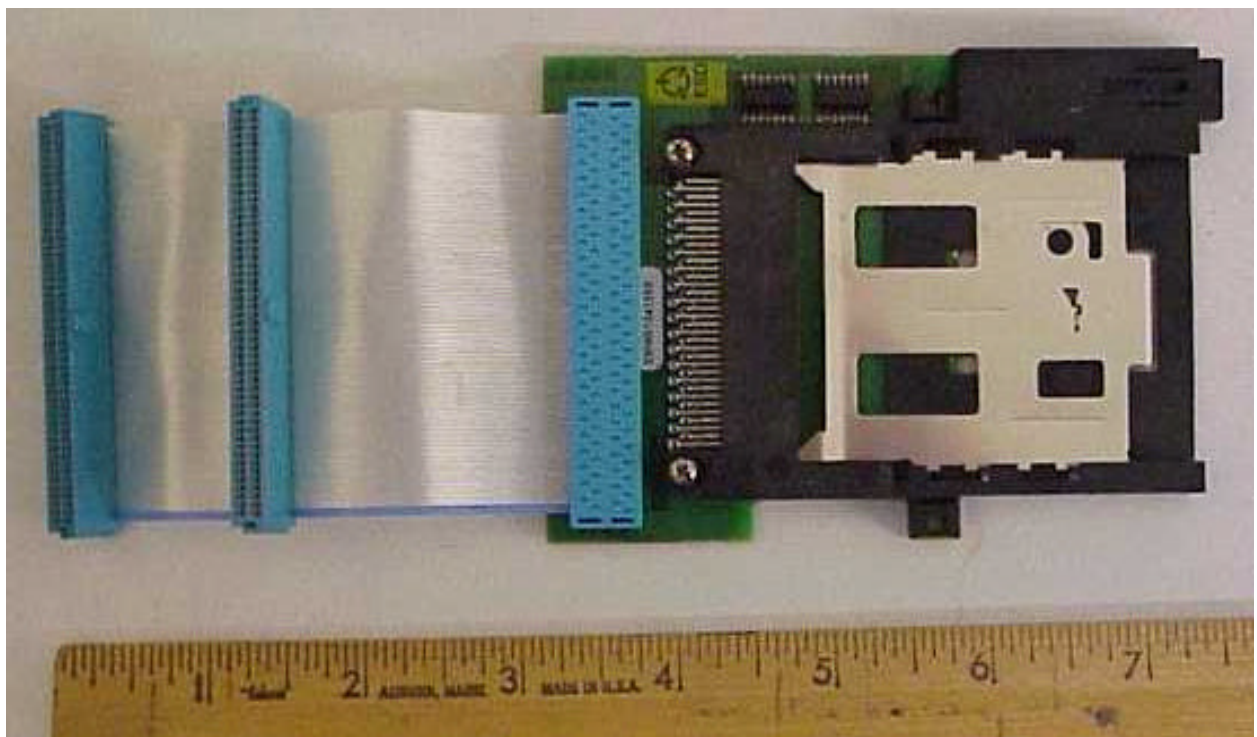
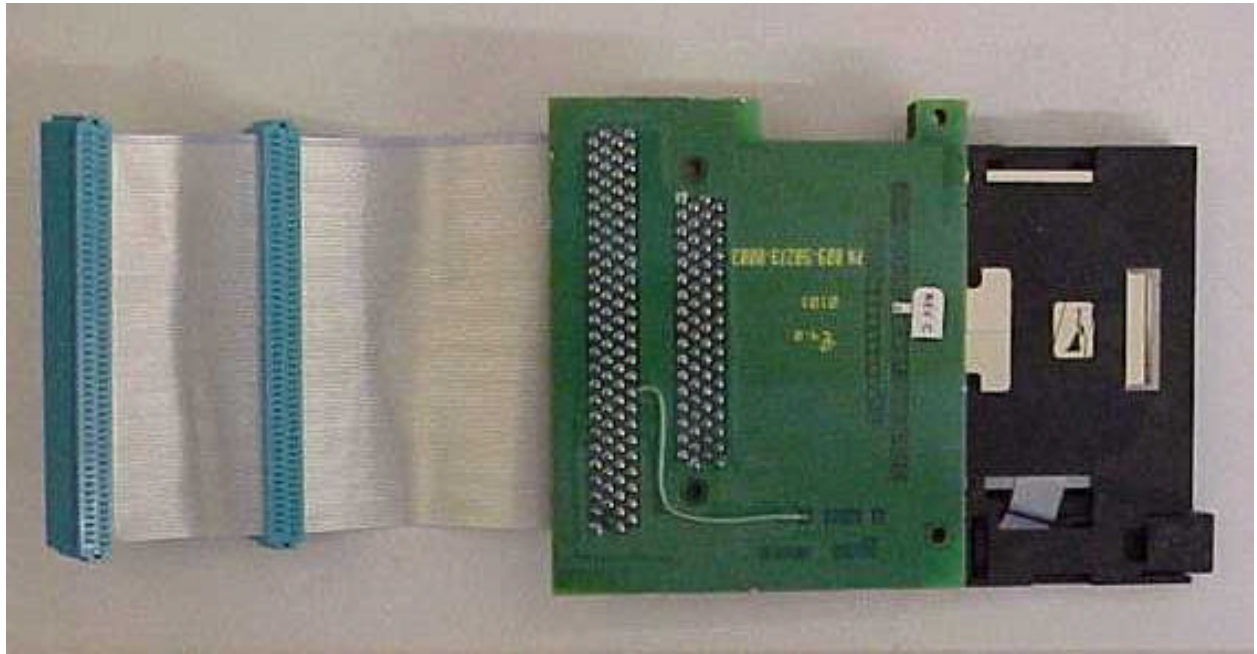


Auxillary processor card - top and bottom views



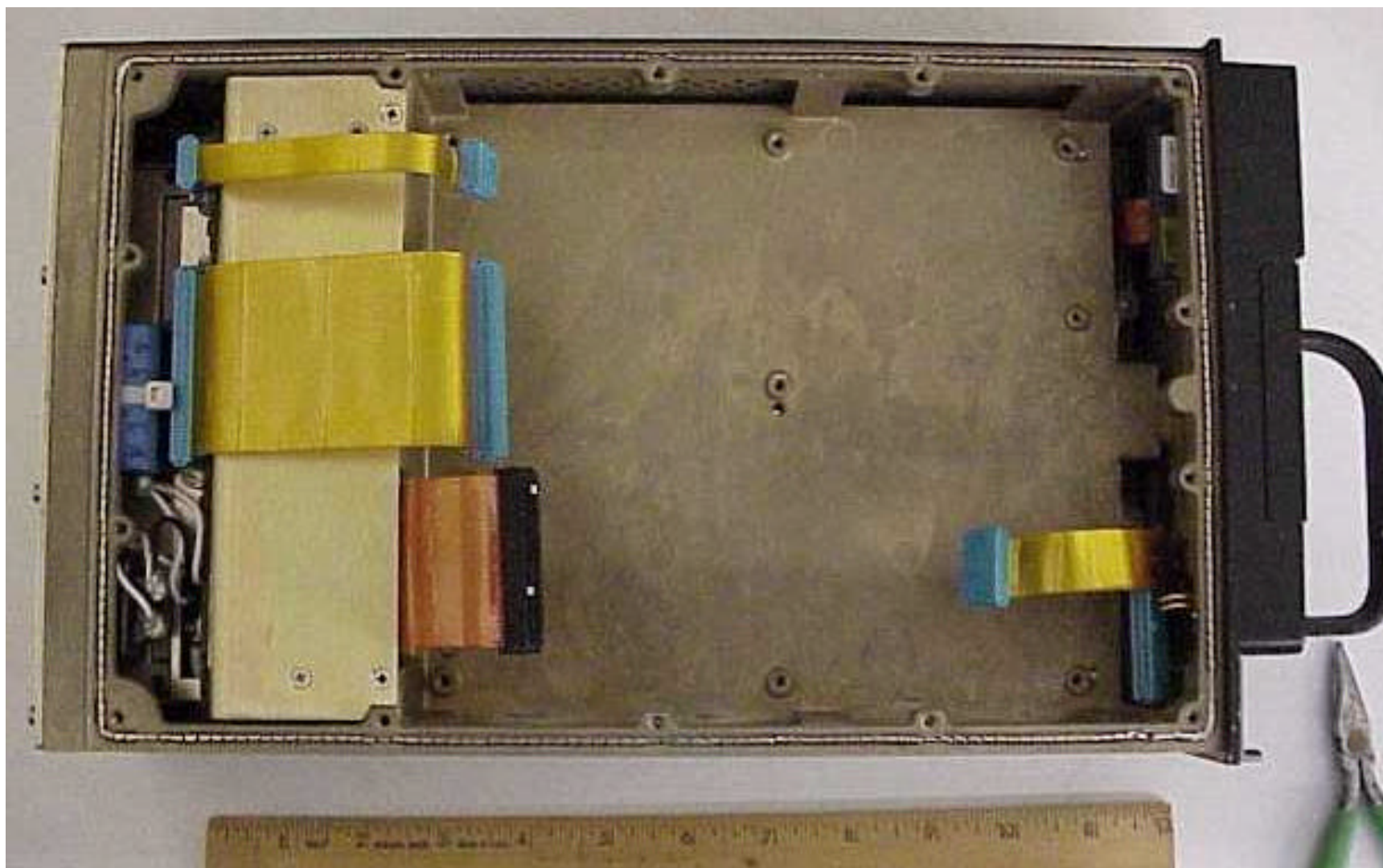


**PCMCIA interface card removed leaving main processor card.**

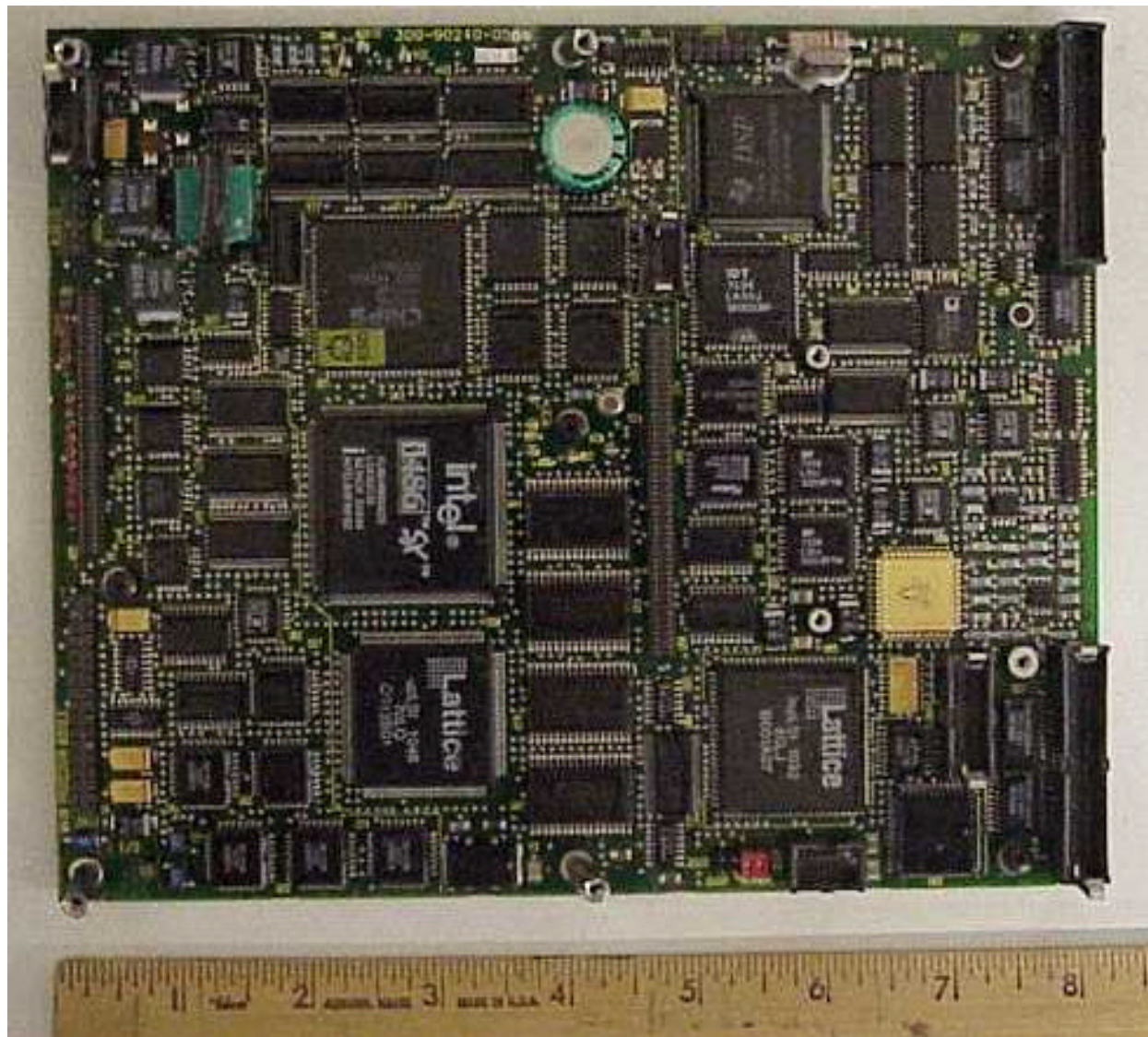


**PCMCIA interface card – bottom and top views**



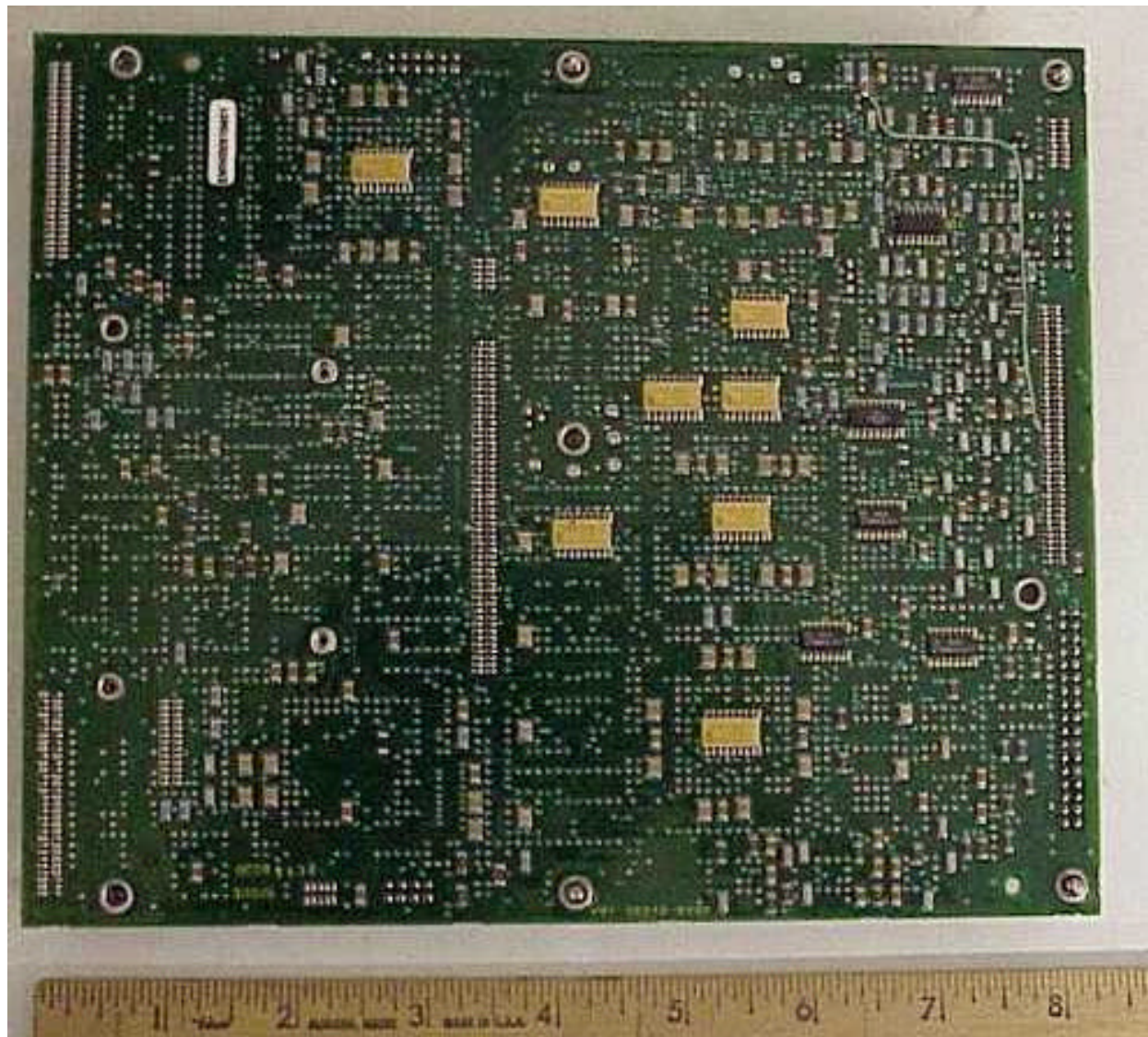


**Main Processor card removed, exposing interior shell of casting.**

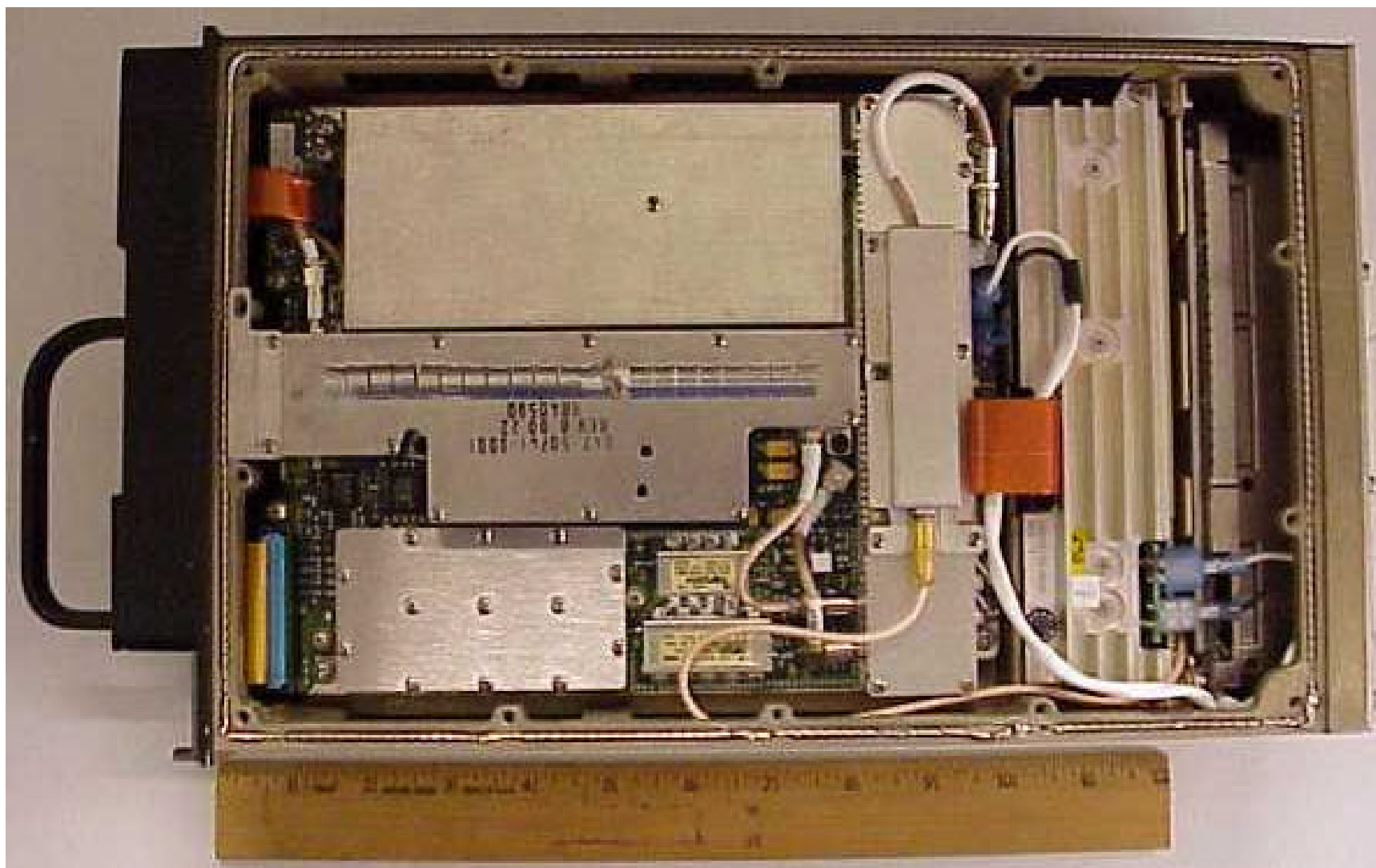


**Main Processor card – top (component side) view**



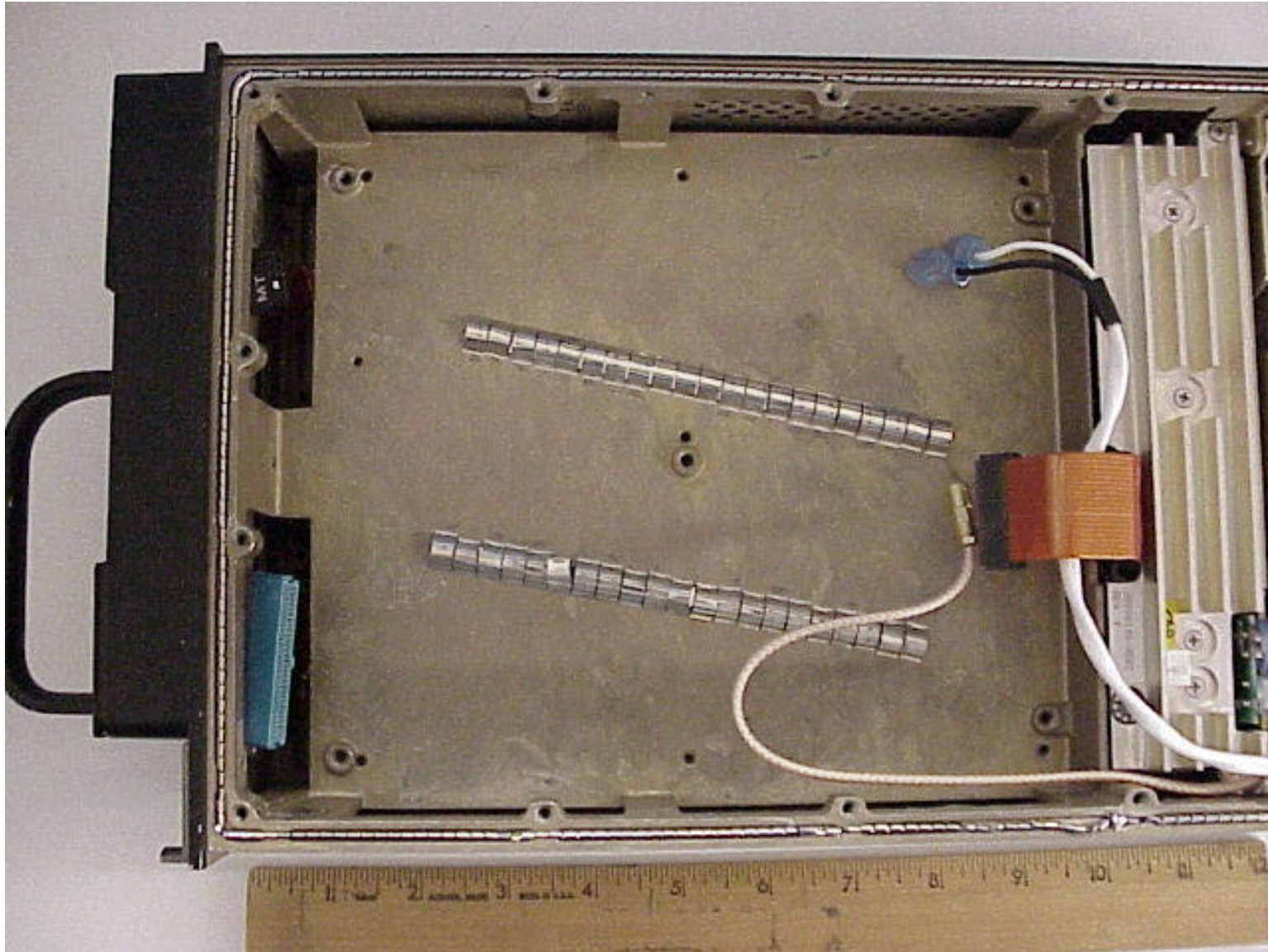


**Main Processor card – bottom view**

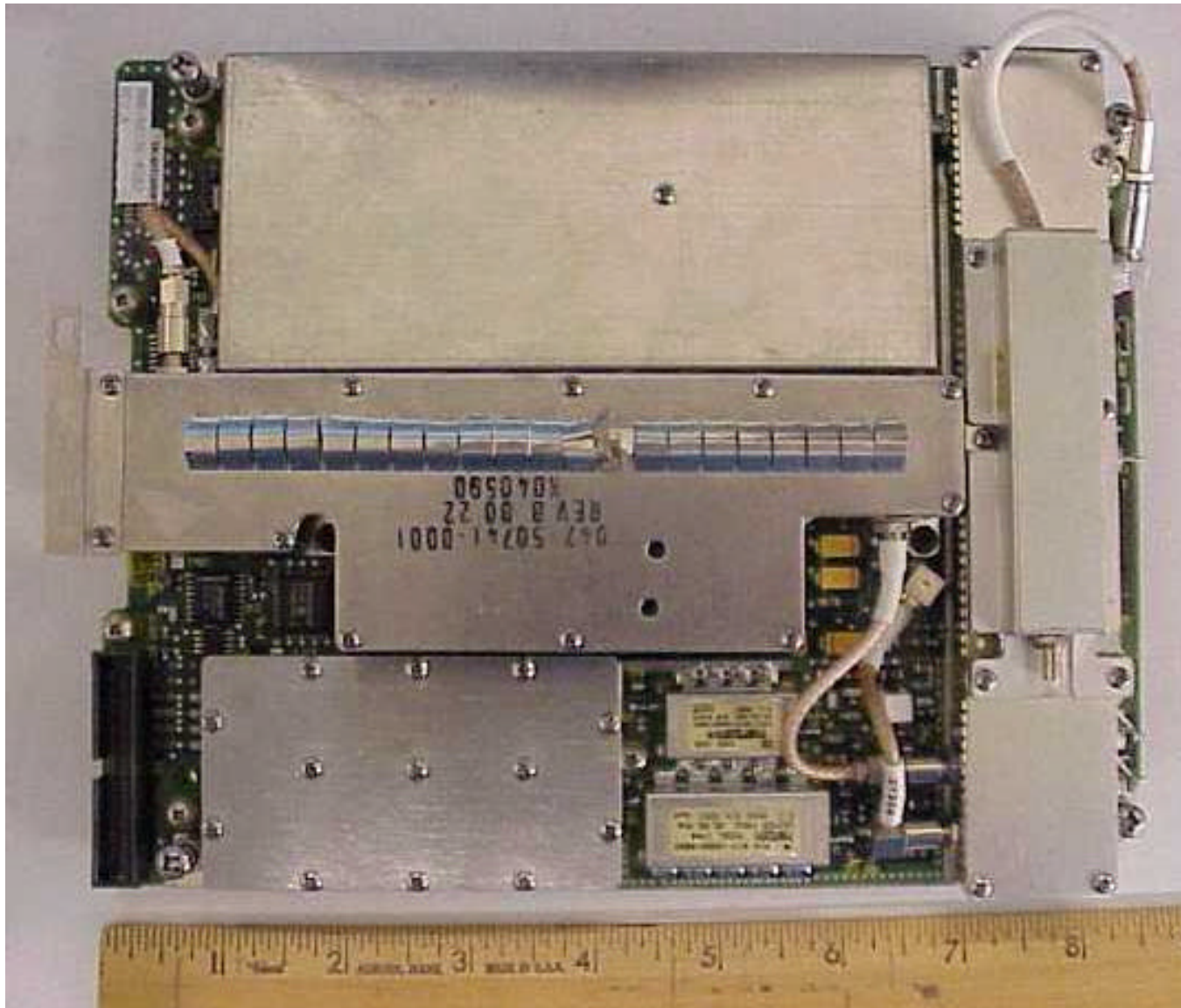


**Right Side Cover Removed exposing RF Transceiver Assembly**



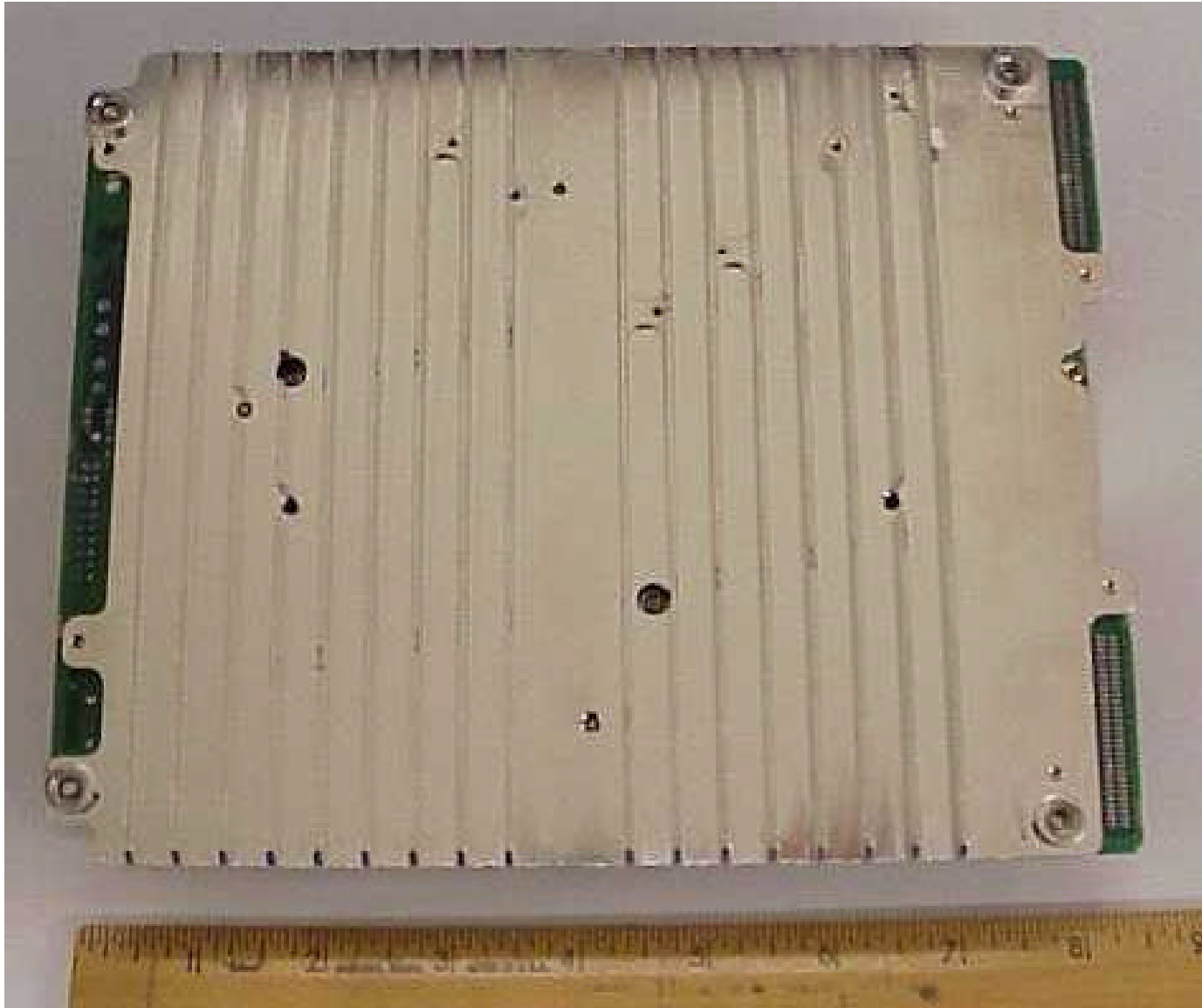


**RF Transceiver Assembly removed, exposing shell of chassis.**

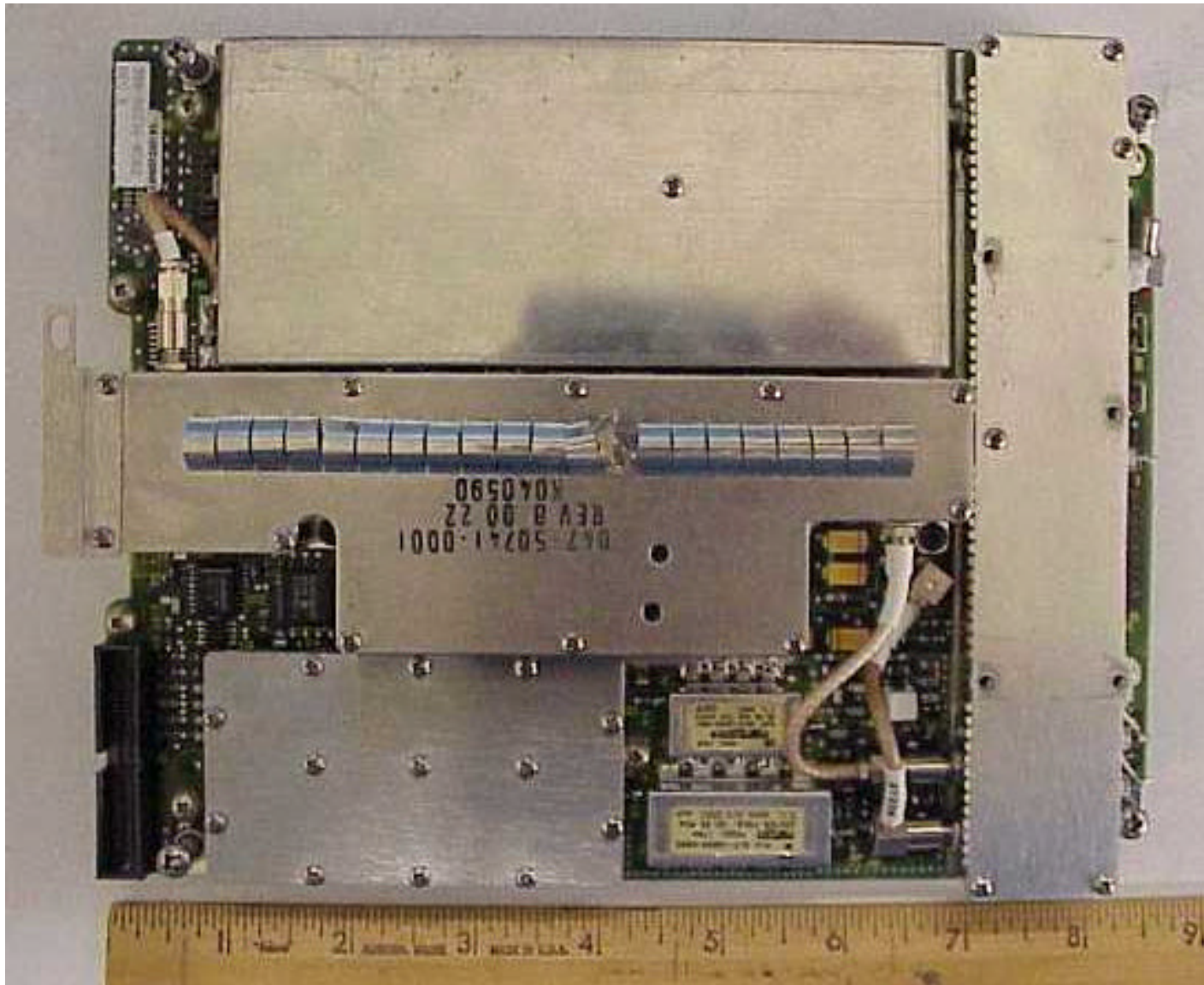


**RF Transceiver Assembly**



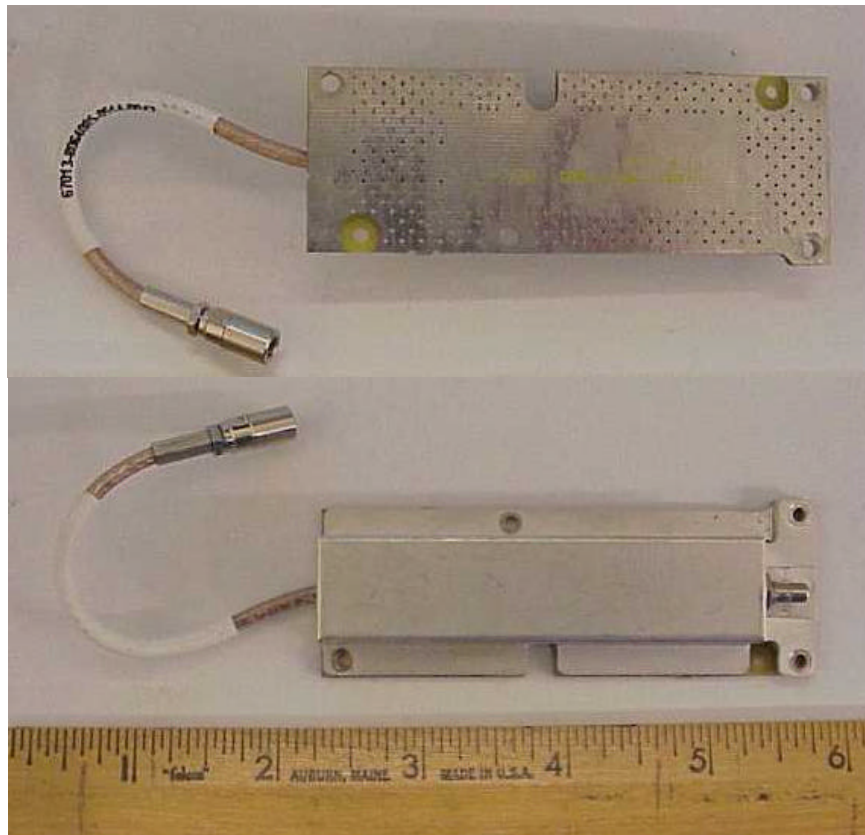


**RF Transceiver Assembly heat sink – bottom view**

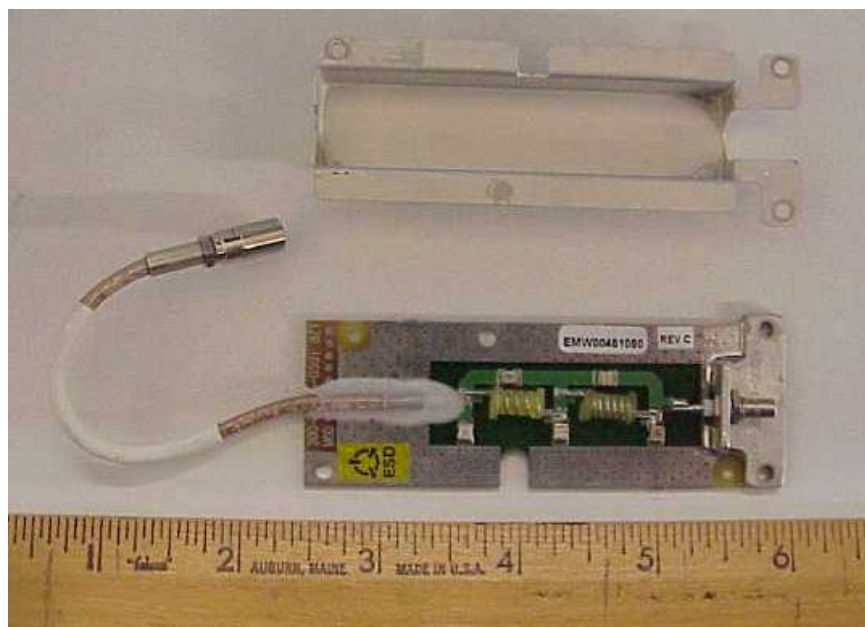


**RF Transceiver Assembly with Low Pass Filter Module removed**

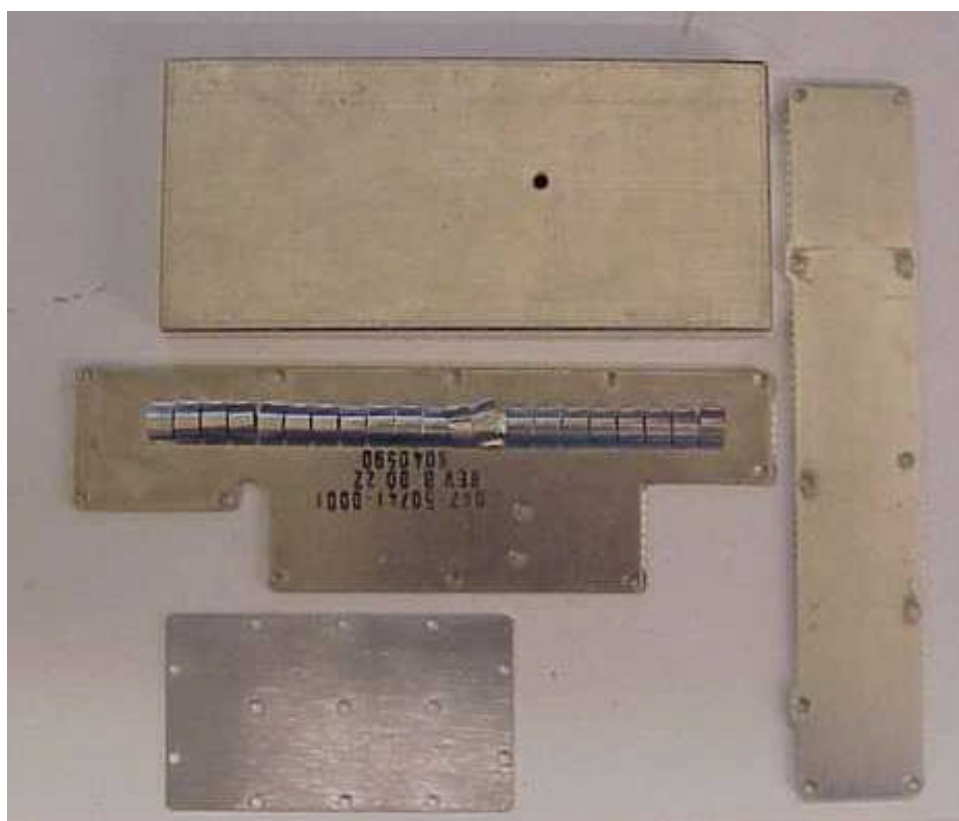




**Low Pass Filter Module (Bottom and Top Views)**



**Low Pass Filter Module with cover removed**



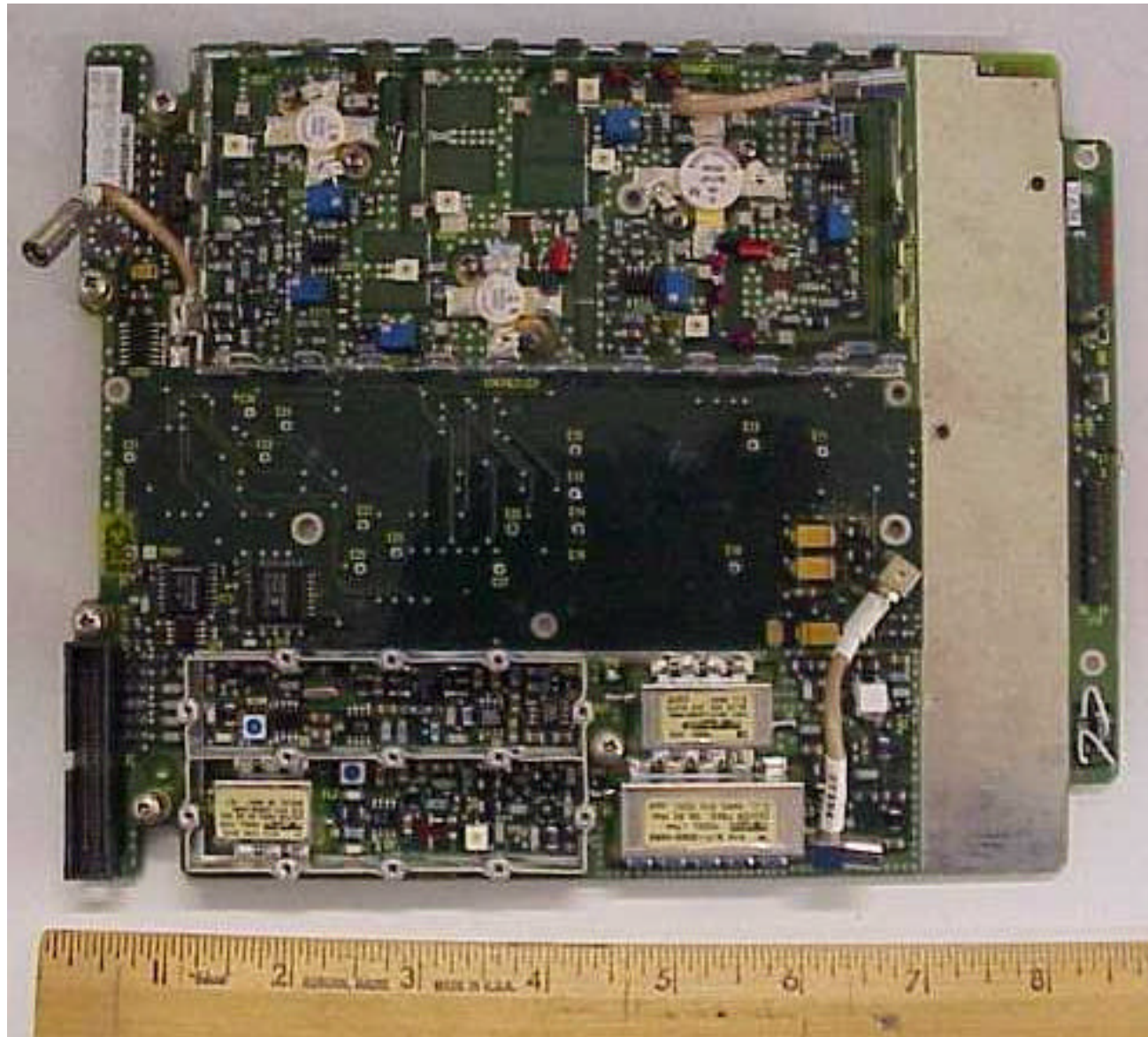
**RF Transceiver Assembly with shield covers removed**





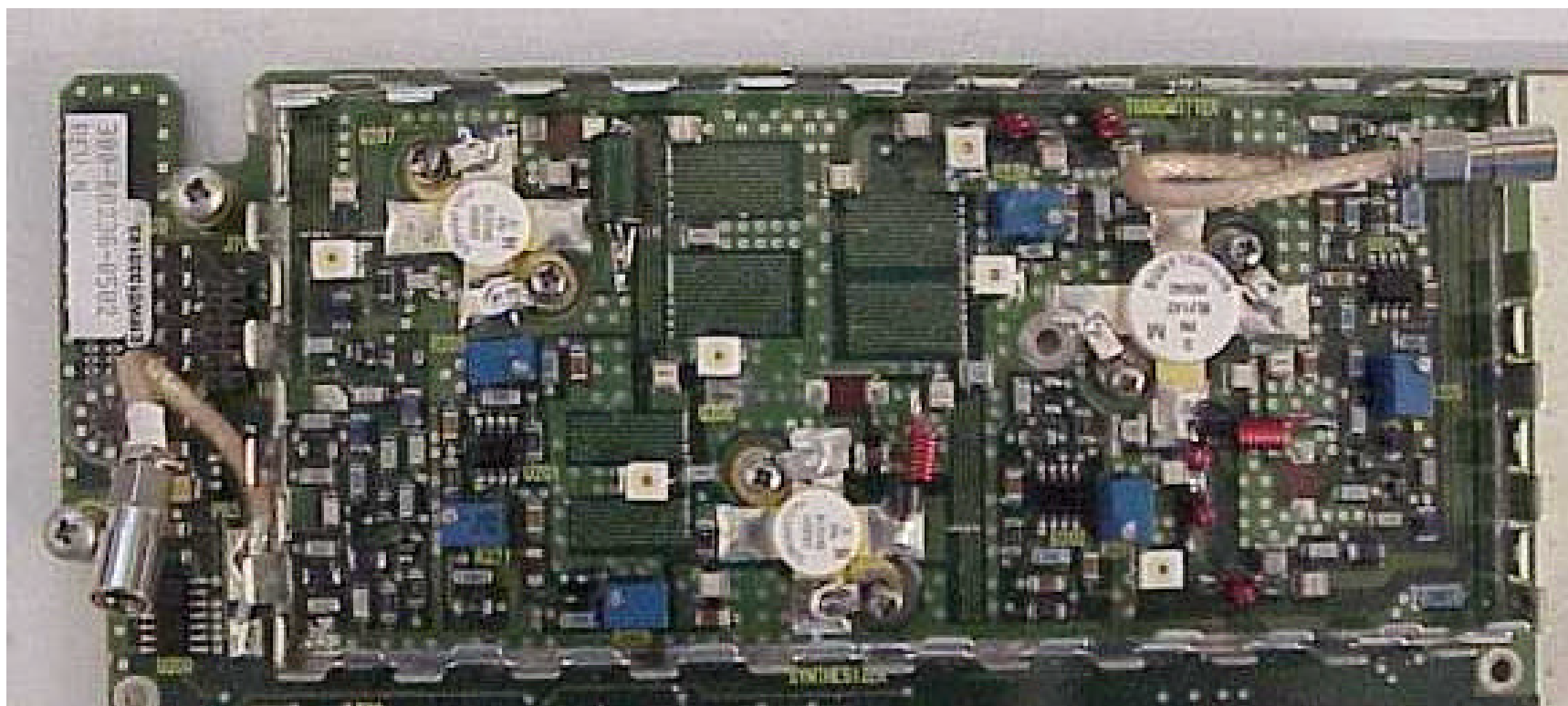
**RF Transceiver Assembly with shield covers removed**



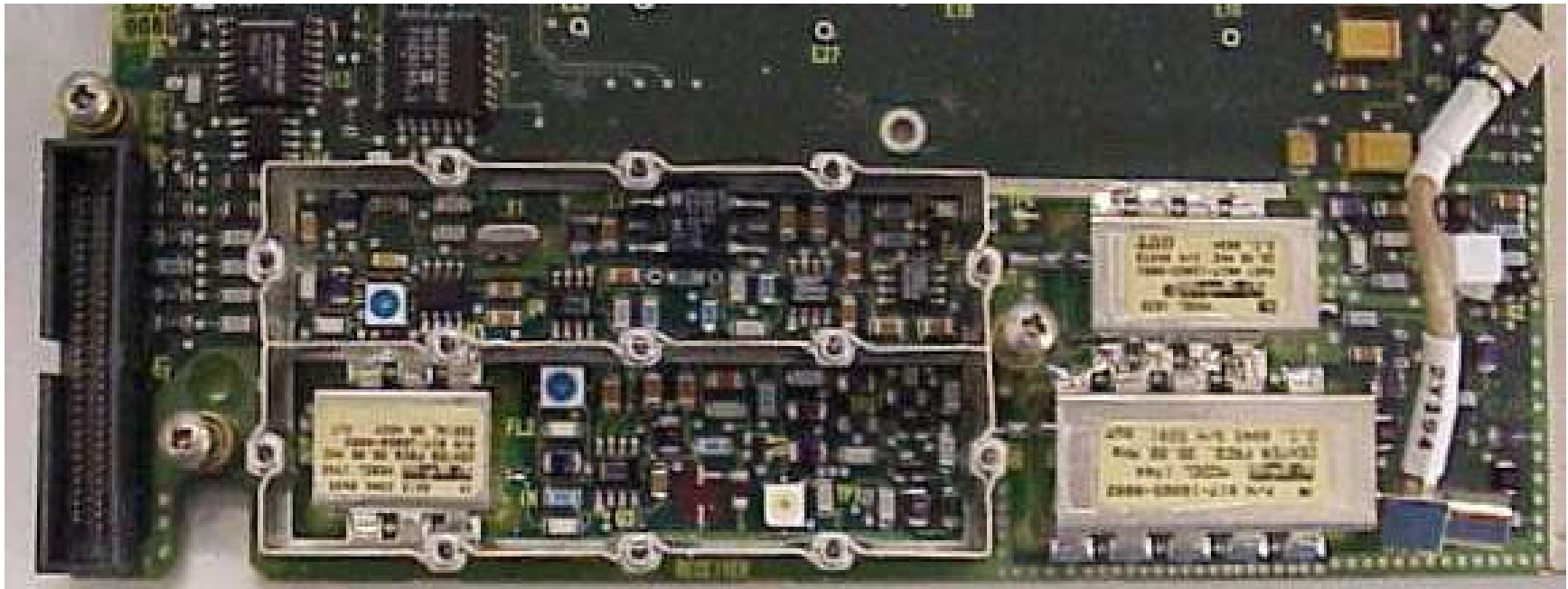


**RF Transceiver Assembly with Synthesizer and TX/RX filter modules removed, leaving Main RF Board**



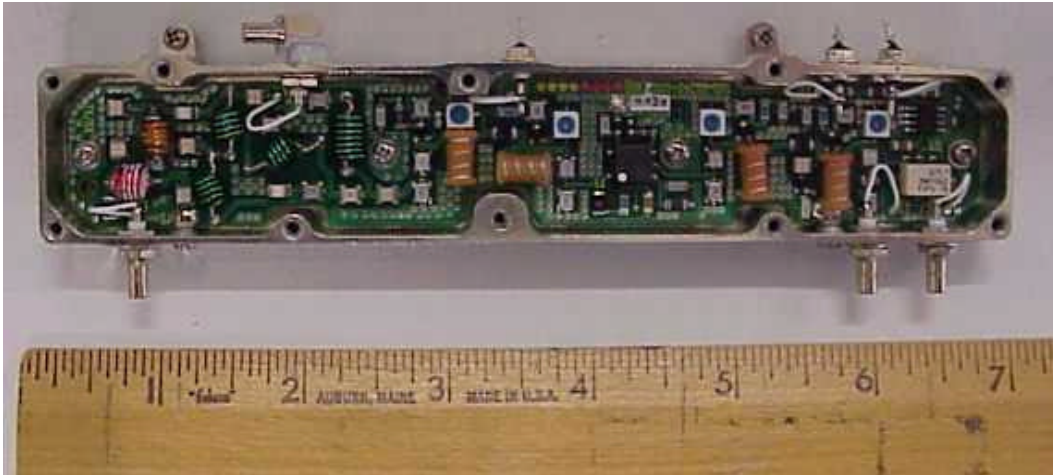


**Close-up of Transmitter portion of Main RF Board.**

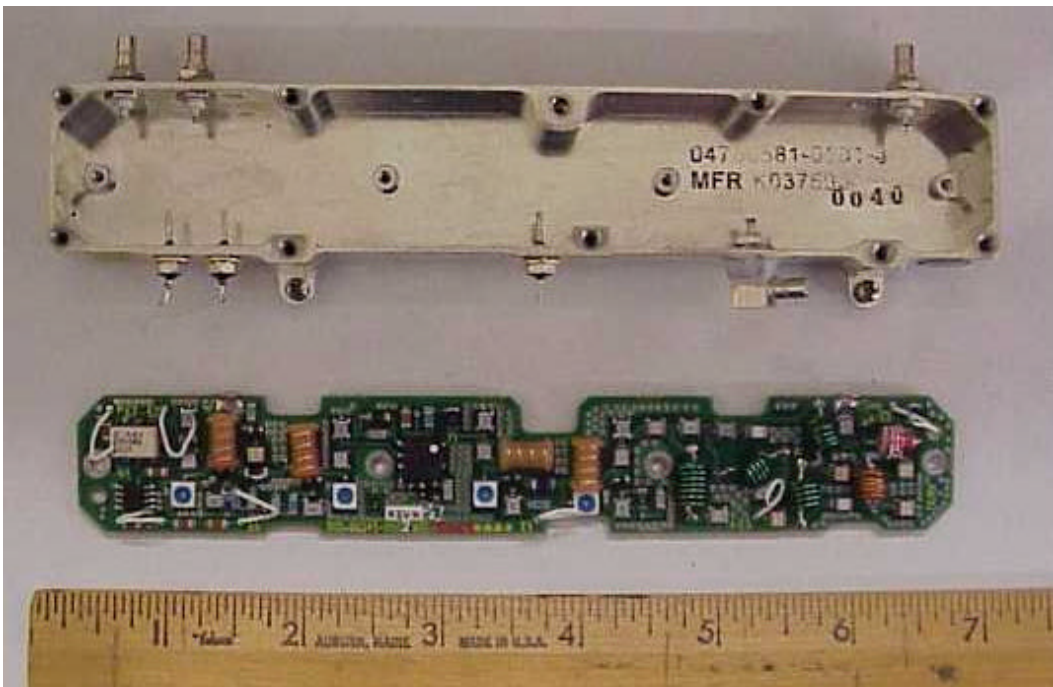


**Close-up of Receiver (IF) portion of Main RF Board**

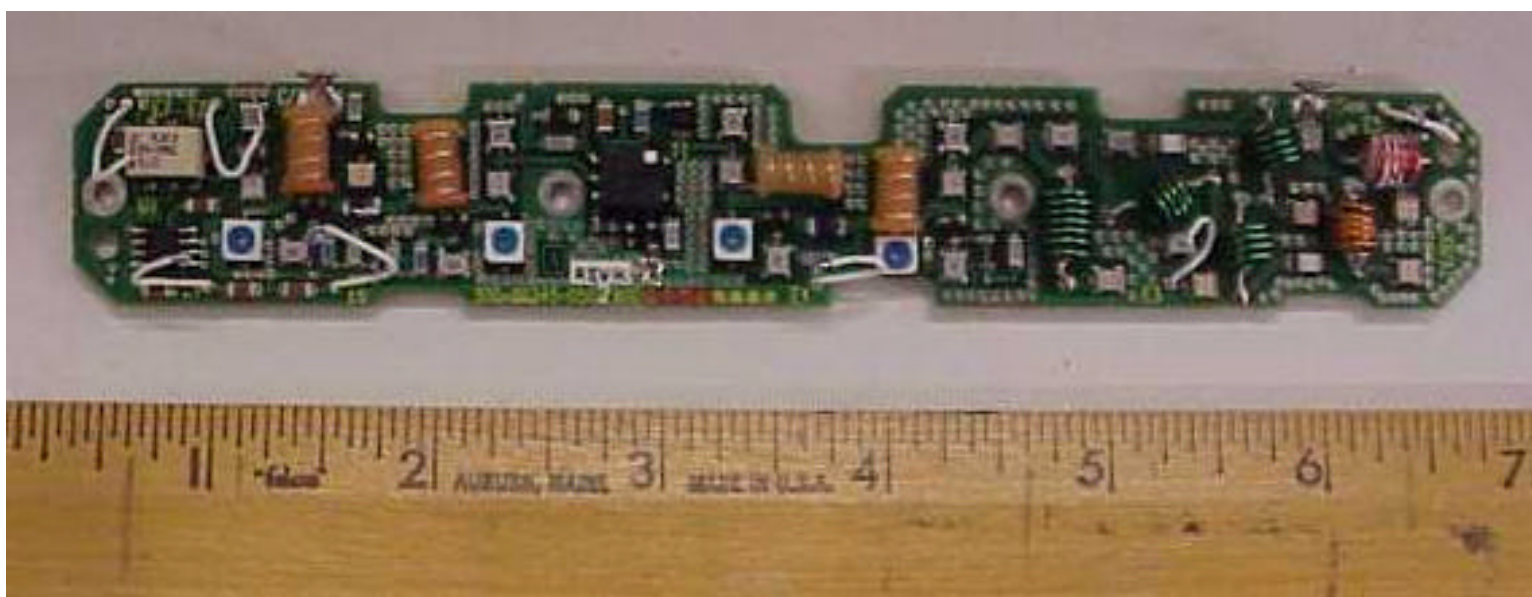
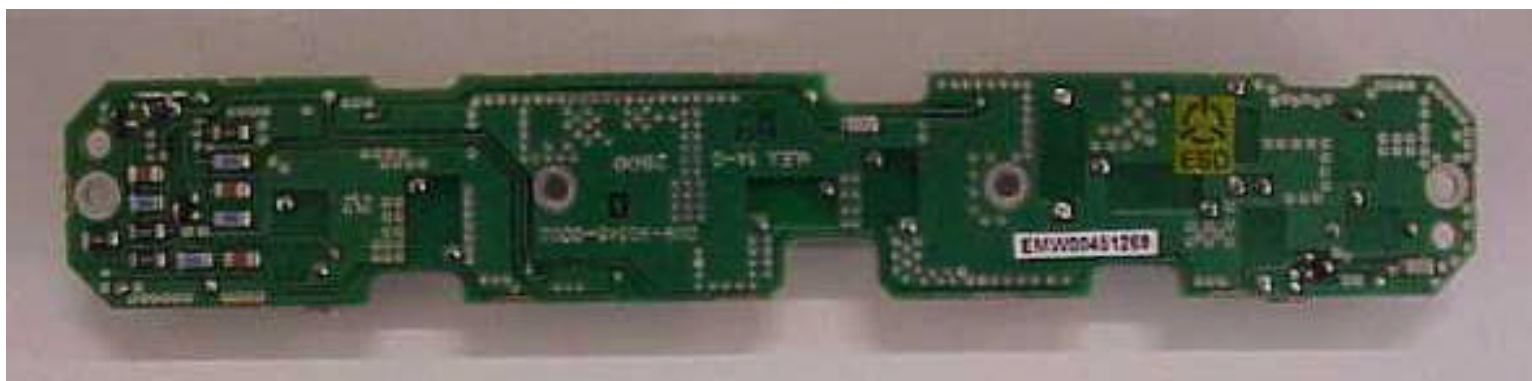




**TX/RX Filter Module – bottom and top views**



**TX/RX Filter Module board removed from assembly**



**TX/RX Filter Module board – bottom and top views.**