

**COMPONENT MAINTENANCE MANUAL**

Part No. 965-1694-001

Table 1005. Fault Data Code List (cont)

Failure Message Title	Primary Suspect LRU	Secondary Suspect LRU	Fault Confirmation Procedure (Only required for Latched Faults and if the fault is a possible Not Detectable Fault)	Fault Isolation Procedure (Only required when the fault messages involving an AESS LRU can not accuse a single LRU with 100%)
AESU1 UADF CDS L3 Compatibility Error	SOFT CONFIG ERROR	DU-MFD- CAPT	N.A.	Determine what version AESU1 Software Part Number and what version UADF CDS L3 configuration should be installed on the airplane. If AESU1 Software Part Number is wrong, load correct versions of AESU1 Software and Databases. If UADF CDS L3 configuration is wrong, load correct version of UADF CDS L3 configuration.
AESU2 UADF CDS L3 Compatibility Error	SOFT CONFIG ERROR	DU-MFD- CAPT	N.A.	Determine what version AESU2 Software Part Number and what version UADF CDS L3 configuration should be installed on the airplane. If AESU2 Software Part Number is wrong, load correct versions of AESU2 Software and Databases. If UADF CDS L3 configuration is wrong, load correct version of UADF CDS L3 configuration.

EFFECTIVITY

ALL

34-48-01Page 1044
1 Dec 2006



COMPONENT MAINTENANCE MANUAL

Part No. 965-1694-001

Table 1005. Fault Data Code List (cont)

Failure Message Title	Primary Suspect LRU	Secondary Suspect LRU	Fault Confirmation Procedure (Only required for Latched Faults and if the fault is a possible Not Detectable Fault)	Fault Isolation Procedure (Only required when the fault messages involving an AESS LRU can not accuse a single LRU with 100%)
AESU1 UADF CDS R1 Compatibility Error	SOFT CONFIG ERROR	DU-PFD-F/O	N.A.	Determine what version AESU1 Software Part Number and what version UADF CDS R1 configuration should be installed on the airplane. If AESU1 Software Part Number is wrong, load correct versions of AESU1 Software and Databases. If UADF CDS R1 configuration is wrong, load correct version of UADF CDS R1 configuration.
AESU2 UADF CDS R1 Compatibility Error	SOFT CONFIG ERROR	DU-PFD-F/O	N.A.	Determine what version AESU2 Software Part Number and what version UADF CDS R1 configuration should be installed on the airplane. If AESU2 Software Part Number is wrong, load correct versions of AESU2 Software and Databases. If UADF CDS R1 configuration is wrong, load correct version of UADF CDS R1 configuration.

EFFECTIVITY

ALL

34-48-01

Page 1045
1 Dec 2006

**COMPONENT MAINTENANCE MANUAL**

Part No. 965-1694-001

Table 1005. Fault Data Code List (cont)

Failure Message Title	Primary Suspect LRU	Secondary Suspect LRU	Fault Confirmation Procedure (Only required for Latched Faults and if the fault is a possible Not Detectable Fault)	Fault Isolation Procedure (Only required when the fault messages involving an AESS LRU can not accuse a single LRU with 100%)
AESU1 UADF CDS R2 Compatibility Error	SOFT CONFIG ERROR	DU-ND-F/O	N.A.	Determine what version AESU1 Software Part Number and what version UADF CDS R2 configuration should be installed on the airplane. If AESU1 Software Part Number is wrong, load correct versions of AESU1 Software and Databases. If UADF CDS R2 configuration is wrong, load correct version of UADF CDS R2 configuration.
AESU2 UADF CDS R2 Compatibility Error	SOFT CONFIG ERROR	DU-ND-F/O	N.A.	Determine what version AESU2 Software Part Number and what version UADF CDS R2 configuration should be installed on the airplane. If AESU2 Software Part Number is wrong, load correct versions of AESU2 Software and Databases. If UADF CDS R2 configuration is wrong, load correct version of UADF CDS R2 configuration.

EFFECTIVITY

ALL

34-48-01Page 1046
1 Dec 2006



COMPONENT MAINTENANCE MANUAL

Part No. 965-1694-001

Table 1005. Fault Data Code List (cont)

Failure Message Title	Primary Suspect LRU	Secondary Suspect LRU	Fault Confirmation Procedure (Only required for Latched Faults and if the fault is a possible Not Detectable Fault)	Fault Isolation Procedure (Only required when the fault messages involving an AESS LRU can not accuse a single LRU with 100%)
AESU1 UADF CDS R3 Compatibility Error	SOFT CONFIG ERROR	DU-MFD-F/O	N.A.	Determine what version AESU1 Software Part Number and what version UADF CDS R3 configuration should be installed on the airplane. If AESU1 Software Part Number is wrong, load correct versions of AESU1 Software and Databases. If UADF CDS R3 configuration is wrong, load correct version of UADF CDS R3 configuration.
AESU2 UADF CDS R3 Compatibility Error	SOFT CONFIG ERROR	DU-MFD-F/O	N.A.	Determine what version AESU2 Software Part Number and what version UADF CDS R3 configuration should be installed on the airplane. If AESU2 Software Part Number is wrong, load correct versions of AESU2 Software and Databases. If UADF CDS R3 configuration is wrong, load correct version of UADF CDS R3 configuration.

EFFECTIVITY

ALL

34-48-01

Page 1047
1 Dec 2006



COMPONENT MAINTENANCE MANUAL

Part No. 965-1694-001

Table 1005. Fault Data Code List (cont)

Failure Message Title	Primary Suspect LRU	Secondary Suspect LRU	Fault Confirmation Procedure (Only required for Latched Faults and if the fault is a possible Not Detectable Fault)	Fault Isolation Procedure (Only required when the fault messages involving an AESS LRU can not accuse a single LRU with 100%)
RTU1/WADU RS422 Failure	WXR Antenna Drive Unit	RTU1	Select Side 1 for WXR/TAWS and XPDR/TCAS Groups on the AESS CP and then perform a Master AESU WXR Test.	Replace RTU1 (refer to AMM task "removal and installation of the RTU"). If fault continues, replace the WXR Antenna Drive Unit (refer to AMM task "removal and installation of the WADU") After manipulations, select Side 1 for WXR/TAWS and XPDR/TCAS Groups on the AESS CP and then perform a Master AESU System Test.
RTU2/WADU RS422 Failure	WXR Antenna Drive Unit	RTU2	Select Side 2 for WXR/TAWS and XPDR/TCAS Groups on the AESS CP and then perform a Master AESU WXR Test.	Replace RTU2 (refer to AMM task "removal and installation of the RTU"). If fault continues, replace the WXR Antenna Drive Unit (refer to AMM task "removal and installation of the WADU") After manipulations, select Side 2 for WXR/TAWS and XPDR/TCAS Groups on the AESS CP and then perform a Master AESU System Test.



COMPONENT MAINTENANCE MANUAL

Part No. 965-1694-001

Table 1005. Fault Data Code List (cont)

Failure Message Title	Primary Suspect LRU	Secondary Suspect LRU	Fault Confirmation Procedure (Only required for Latched Faults and if the fault is a possible Not Detectable Fault)	Fault Isolation Procedure (Only required when the fault messages involving an AESS LRU can not accuse a single LRU with 100%)
RTU1 AESU1 ARINC 429 Input Failure	AESU1	RTU1	Select Side 1 for WXR/TAWS and XPDR/TCAS Groups on the AESS CP and then perform a Master AESU WXR Test.	Replace AESU1 (refer to AMM task "removal and installation of the AESU") If fault continues, replace RTU1 (refer to AMM task "removal and installation of the RTU"). If fault continues, remove RTU1 and AESU1, do a check and repair the ARINC 429 wiring from the RTU1 to AESU1. Install RTU1 and AESU1. After manipulations, select Side 1 for WXR/TAWS and XPDR/TCAS Groups on the AESS CP and then perform a Master AESU System Test.
RTU2 AESU2 ARINC 429 Input Failure	AESU2	RTU2	Select Side 2 for WXR/TAWS and XPDR/TCAS Groups on the AESS CP and then perform a Master AESU WXR Test.	Replace AESU2 (refer to AMM task "removal and installation of the AESU") If fault continues, replace RTU2 (refer to AMM task "removal and installation of the RTU"). If fault continues, remove RTU2 and AESU2, do a check and repair the ARINC 429 wiring from the RTU2 to AESU2. Install RTU2 and AESU2. After manipulations, select Side 2 for WXR/TAWS and XPDR/TCAS Groups on the AESS CP and then perform a Master AESU System Test.

EFFECTIVITY _____

ALL

34-48-01

Page 1049
1 Dec 2006



COMPONENT MAINTENANCE MANUAL

Part No. 965-1694-001

Table 1005. Fault Data Code List (cont)

Failure Message Title	Primary Suspect LRU	Secondary Suspect LRU	Fault Confirmation Procedure (Only required for Latched Faults and if the fault is a possible Not Detectable Fault)	Fault Isolation Procedure (Only required when the fault messages involving an AESS LRU can not accuse a single LRU with 100%)
AESU1 Manual Reset	MANUAL RESET		N.A.	N.A.
AESU2 Manual Reset	MANUAL RESET		N.A.	N.A.
AESU1 CMF Interactive mode Both Capt and F/O Speakers Audio Test Failure	AESU1	AMU-1	N.A.	<p>Determine if Audio can be heard from other systems on both CAPT and FO speakers, if audio can not be heard from other aircraft systems (e.g., FWC, AESU2) then troubleshoot the Audio System.</p> <p>If audio can be heard from other systems, then replace AESU1 (refer to AMM task "removal and installation of the AESU").</p> <p>If fault continues, remove AESU1 and AMUs, do a check and repair the audio wiring from AESU1 to AMUs. Install AESU1 and AMUs.</p> <p>After manipulations, select Side 1 for WXR/TAWS and XPDR/TCAS Groups on the AESS CP and then perform a Master AESU System Test.</p>

EFFECTIVITY

ALL

34-48-01

Page 1050
1 Dec 2006



COMPONENT MAINTENANCE MANUAL

Part No. 965-1694-001

Table 1005. Fault Data Code List (cont)

Failure Message Title	Primary Suspect LRU	Secondary Suspect LRU	Fault Confirmation Procedure (Only required for Latched Faults and if the fault is a possible Not Detectable Fault)	Fault Isolation Procedure (Only required when the fault messages involving an AESS LRU can not accuse a single LRU with 100%)
AESU1 CMF Interactive mode Display Test Failure	AESU1	DU-ND-CAPT	N.A.	<p>Determine if Display images can be seen from other systems on both CAPT and FO displays, if display images can not be seen from other aircraft systems (e.g., ECAM, FMS, AESU2) then troubleshoot the Display System.</p> <p>If Display images can be seen from other systems, then replace AESU1 (refer to AMM task "removal and installation of the AESU").</p> <p>If fault continues, remove AESU1, do a check and repair the AFDX wiring to/from AESU1. Install AESU1.</p> <p>After manipulations, select Side 1 for WXR/TAWS and XPDR/TCAS Groups on the AESS CP and then perform a Master AESU System Test.</p>

EFFECTIVITY

ALL

34-48-01

Page 1051
1 Dec 2006



COMPONENT MAINTENANCE MANUAL

Part No. 965-1694-001

Table 1005. Fault Data Code List (cont)

Failure Message Title	Primary Suspect LRU	Secondary Suspect LRU	Fault Confirmation Procedure (Only required for Latched Faults and if the fault is a possible Not Detectable Fault)	Fault Isolation Procedure (Only required when the fault messages involving an AESS LRU can not accuse a single LRU with 100%)
AESU2 CMF Interactive mode Both Capt and F/O Speakers Audio Test Failure	AESU2	AMU-1	N.A.	<p>Determine if Audio can be heard from other systems on both CAPT and FO speakers, if audio can not be heard from other aircraft systems (e.g., FWC, AESU1) then troubleshoot the Audio System.</p> <p>If audio can be heard from other systems, then replace AESU2 (refer to AMM task "removal and installation of the AESU").</p> <p>If fault continues, remove AESU2 and AMUs, do a check and repair the audio wiring from AESU2 to AMUs. Install AESU2 and AMUs.</p> <p>After manipulations, select Side 2 for WXR/TAWS and XPDR/TCAS Groups on the AESS CP and then perform a Master AESU System Test.</p>

EFFECTIVITY

ALL

34-48-01

Page 1052
1 Dec 2006



COMPONENT MAINTENANCE MANUAL

Part No. 965-1694-001

Table 1005. Fault Data Code List (cont)

Failure Message Title	Primary Suspect LRU	Secondary Suspect LRU	Fault Confirmation Procedure (Only required for Latched Faults and if the fault is a possible Not Detectable Fault)	Fault Isolation Procedure (Only required when the fault messages involving an AESS LRU can not accuse a single LRU with 100%)
AESU2 CMF Interactive mode Display Test Failure	AESU2	DU-ND-CAPT	N.A.	<p>Determine if Display images can be seen from other systems on both CAPT and FO displays, if display images can not be seen from other aircraft systems (e.g., ECAM, FMS, AESU1) then troubleshoot the Display System.</p> <p>If Display images can be seen from other systems, then replace AESU2 (refer to AMM task "removal and installation of the AESU").</p> <p>If fault continues, remove AESU2, do a check and repair the AFDX wiring to/from AESU2. Install AESU2.</p> <p>After manipulations, select Side 2 for WXR/TAWS and XPDR/TCAS Groups on the AESS CP and then perform a Master AESU System Test.</p>

EFFECTIVITY—

ALL

34-48-01

Page 1053
1 Dec 2006



COMPONENT MAINTENANCE MANUAL

Part No. 965-1694-001

Table 1005. Fault Data Code List (cont)

Failure Message Title	Primary Suspect LRU	Secondary Suspect LRU	Fault Confirmation Procedure (Only required for Latched Faults and if the fault is a possible Not Detectable Fault)	Fault Isolation Procedure (Only required when the fault messages involving an AESS LRU can not accuse a single LRU with 100%)
AESU1 Disagreement between Air /Ground Discrete Input and AFDX Air/Ground State	IRDC-4A	IRDC-5A	N.A.	Replace applicable IRDC-4A Unit (refer to AMM task "removal and installation of the IRDC"). If fault continues, replace IRDC-5A Unit (refer to AMM task "removal and installation of the IRDC"). If fault continues, replace AESU1 (refer to AMM task "removal and installation of the AESU"). If fault continues, remove AESU1 and IRDC-4A/IRDC-5A, do a check and repair the discrete wiring from the IRDC-4A/IRDC-5A to AESU1. Install AESU1 and IRDC-4A/IRDC-5A. After manipulations, select Side 1 for WXR/TAWS and XPDR/TCAS Groups on the AESS CP and then perform a Master AESU System Test.

EFFECTIVITY

ALL

34-48-01

Page 1054
1 Dec 2006

**COMPONENT MAINTENANCE MANUAL**

Part No. 965-1694-001

Table 1005. Fault Data Code List (cont)

Failure Message Title	Primary Suspect LRU	Secondary Suspect LRU	Fault Confirmation Procedure (Only required for Latched Faults and if the fault is a possible Not Detectable Fault)	Fault Isolation Procedure (Only required when the fault messages involving an AESS LRU can not accuse a single LRU with 100%)
AESU2 Disagreement between Air /Ground Discrete Input and AFDX Air/Ground State	IRDC-4B	IRDC-5B	N.A.	Replace applicable IRDC-4B Unit (refer to AMM task "removal and installation of the IRDC"). If fault continues, replace IRDC-5B Unit (refer to AMM task "removal and installation of the IRDC"). If fault continues, replace AESU2 (refer to AMM task "removal and installation of the AESU"). If fault continues, remove AESU2 and IRDC-4B/IRDC-5B, do a check and repair the discrete wiring from the IRDC-4B/IRDC-5B to AESU2. Install AESU2 and IRDC-4B/IRDC-5B. After manipulations, select Side 2 for WXR/TAWS and XPDR/TCAS Groups on the AESS CP and then perform a Master AESU System Test.

EFFECTIVITY

ALL

34-48-01

Page 1055

1 Dec 2006



COMPONENT MAINTENANCE MANUAL

Part No. 965-1694-001

Table 1005. Fault Data Code List (cont)

Failure Message Title	Primary Suspect LRU	Secondary Suspect LRU	Fault Confirmation Procedure (Only required for Latched Faults and if the fault is a possible Not Detectable Fault)	Fault Isolation Procedure (Only required when the fault messages involving an AESS LRU can not accuse a single LRU with 100%)
AESU1 CMF Interactive mode Capt's Speaker Audio Test Failure	AMU-1	AESU1	N.A.	<p>Determine if Audio can be heard from other systems on the CAPT's speaker, if audio can not be heard from other aircraft systems (e.g., FWC, AESU2) then troubleshoot the Audio System.</p> <p>If audio can be heard from other systems, then replace AESU1 (refer to AMM task "removal and installation of the AESU").</p> <p>If fault continues, remove AESU1 and AMU1, do a check and repair the audio wiring from AESU1 to AMU1. Install AESU1 and AMU1.</p> <p>After manipulations, select Side 1 for WXR/TAWS and XPDR/TCAS Groups on the AESS CP and then perform a Master AESU System Test and Master AESU Audio Test.</p>

EFFECTIVITY

ALL

34-48-01

Page 1056

1 Dec 2006



COMPONENT MAINTENANCE MANUAL

Part No. 965-1694-001

Table 1005. Fault Data Code List (cont)

Failure Message Title	Primary Suspect LRU	Secondary Suspect LRU	Fault Confirmation Procedure (Only required for Latched Faults and if the fault is a possible Not Detectable Fault)	Fault Isolation Procedure (Only required when the fault messages involving an AESS LRU can not accuse a single LRU with 100%)
AESU2 CMF Interactive mode Capt's Speaker Audio Test Failure	AMU-1	AESU2	N.A.	<p>Determine if Audio can be heard from other systems on the CAPT's speaker, if audio can not be heard from other aircraft systems (e.g., FWC, AESU1) then troubleshoot the Audio System.</p> <p>If audio can be heard from other systems, then replace AESU2 (refer to AMM task "removal and installation of the AESU").</p> <p>If fault continues, remove AESU2 and AMU1, do a check and repair the audio wiring from AESU2 to AMU1. Install AESU2 and AMU1.</p> <p>After manipulations, select Side 2 for WXR/TAWS and XPDR/TCAS Groups on the AESS CP and then perform a Master AESU System Test and Master AESU Audio Test.</p>

EFFECTIVITY

ALL

34-48-01

Page 1057
1 Dec 2006



COMPONENT MAINTENANCE MANUAL

Part No. 965-1694-001

Table 1005. Fault Data Code List (cont)

Failure Message Title	Primary Suspect LRU	Secondary Suspect LRU	Fault Confirmation Procedure (Only required for Latched Faults and if the fault is a possible Not Detectable Fault)	Fault Isolation Procedure (Only required when the fault messages involving an AESS LRU can not accuse a single LRU with 100%)
AESU1 CMF Interactive mode F/O's Speaker Audio Test Failure	AMU-2	AESU1	N.A.	<p>Determine if Audio can be heard from other systems on the F/O's speaker, if audio can not be heard from other aircraft systems (e.g., FWC, AESU2) then troubleshoot the Audio System.</p> <p>If audio can be heard from other systems, then replace AESU1 (refer to AMM task "removal and installation of the AESU").</p> <p>If fault continues, remove AESU1 and AMU2, do a check and repair the audio wiring from AESU1 to AMU2. Install AESU1 and AMU2.</p> <p>After manipulations, select Side 1 for WXR/TAWS and XPDR/TCAS Groups on the AESS CP and then perform a Master AESU System Test and Master AESU Audio Test.</p>

EFFECTIVITY

ALL

34-48-01

Page 1058
1 Dec 2006



COMPONENT MAINTENANCE MANUAL

Part No. 965-1694-001

Table 1005. Fault Data Code List (cont)

Failure Message Title	Primary Suspect LRU	Secondary Suspect LRU	Fault Confirmation Procedure (Only required for Latched Faults and if the fault is a possible Not Detectable Fault)	Fault Isolation Procedure (Only required when the fault messages involving an AESS LRU can not accuse a single LRU with 100%)
AESU2 CMF Interactive mode F/O's Speaker Audio Test Failure	AMU-2	AESU2	N.A.	<p>Determine if Audio can be heard from other systems on the F/O's speaker, if audio can not be heard from other aircraft systems (e.g., FWC, AESU1) then troubleshoot the Audio System.</p> <p>If audio can be heard from other systems, then replace AESU2 (refer to AMM task "removal and installation of the AESU").</p> <p>If fault continues, remove AESU2 and AMU2, do a check and repair the audio wiring from AESU2 to AMU2. Install AESU2 and AMU2.</p> <p>After manipulations, select Side 2 for WXR/TAWS and XPDR/TCAS Groups on the AESS CP and then perform a Master AESU System Test and Master AESU Audio Test.</p>

EFFECTIVITY

ALL

34-48-01

Page 1059

1 Dec 2006



COMPONENT MAINTENANCE MANUAL

Part No. 965-1694-001

Table 1005. Fault Data Code List (cont)

Failure Message Title	Primary Suspect LRU	Secondary Suspect LRU	Fault Confirmation Procedure (Only required for Latched Faults and if the fault is a possible Not Detectable Fault)	Fault Isolation Procedure (Only required when the fault messages involving an AESS LRU can not accuse a single LRU with 100%)
AESU1 Disagreement between LGER Air/Ground Signals and Aircraft Airspeed /Altitude	IRDC-4A	IRDC-5A	N.A.	Replace applicable IRDC-4A Unit (refer to AMM task "removal and installation of the IRDC"). If fault continues, replace IRDC-5A Unit (refer to AMM task "removal and installation of the IRDC"). If fault continues, replace applicable IRDC-4B Unit (refer to AMM task "removal and installation of the IRDC"). If fault continues, replace IRDC-5B Unit (refer to AMM task "removal and installation of the IRDC"). After manipulations, select Side 1 for WXR/TAWS and XPDR/TCAS Groups on the AESS CP and then perform a Master AESU System Test.

EFFECTIVITY _____

ALL

34-48-01

Page 1060
1 Dec 2006



COMPONENT MAINTENANCE MANUAL

Part No. 965-1694-001

Table 1005. Fault Data Code List (cont)

Failure Message Title	Primary Suspect LRU	Secondary Suspect LRU	Fault Confirmation Procedure (Only required for Latched Faults and if the fault is a possible Not Detectable Fault)	Fault Isolation Procedure (Only required when the fault messages involving an AESS LRU can not accuse a single LRU with 100%)
AESU2 Disagreement between LGER Air/Ground Signals and Aircraft Airspeed /Altitude	IRDC-4B	IRDC-5B	N.A.	Replace applicable IRDC-4B Unit (refer to AMM task "removal and installation of the IRDC"). If fault continues, replace IRDC-5B Unit (refer to AMM task "removal and installation of the IRDC"). If fault continues, replace applicable IRDC-4A Unit (refer to AMM task "removal and installation of the IRDC"). If fault continues, replace IRDC-5A Unit (refer to AMM task "removal and installation of the IRDC"). After manipulations, select Side 2 for WXR/TAWS and XPDR/TCAS Groups on the AESS CP and then perform a Master AESU System Test.
ADIRU_ADR_AFDX_Msg_1 Signal Failure	ADIRU 1	AESU1	N.A.	N.A.
ADIRU_ADR_AFDX_Msg_2 Signal Failure	ADIRU 2	AESU1	N.A.	N.A.
ADIRU_ADR_AFDX_Msg_3 Signal Failure	ADIRU 3	AESU1	N.A.	N.A.
FCUB_FRAME_EFIS-1 Signal Failure	SOFTWARE-FCU BACKUP 1	AESU1	N.A.	N.A.

EFFECTIVITY

ALL

34-48-01

Page 1061
1 Dec 2006



COMPONENT MAINTENANCE MANUAL

Part No. 965-1694-001

Table 1005. Fault Data Code List (cont)

Failure Message Title	Primary Suspect LRU	Secondary Suspect LRU	Fault Confirmation Procedure (Only required for Latched Faults and if the fault is a possible Not Detectable Fault)	Fault Isolation Procedure (Only required when the fault messages involving an AESS LRU can not accuse a single LRU with 100%)
LGERS_Status_1 Signal Failure	IRDC-4A	IRDC-5A	N.A.	Replace applicable IRDC-4A Unit (refer to AMM task "removal and installation of the IRDC"). If fault continues, replace IRDC-5A Unit (refer to AMM task "removal and installation of the IRDC"). After manipulations, select Side 1 for WXR/TAWS and XPDR/TCAS Groups on the AESS CP and then perform a Master AESU System Test.
DATE_TIME _SCI_TO_AFDX Signal Failure	SCI	AESU1	N.A.	N.A.
IOM-A1 and IOM-A2 FCU Signal Failure	FCU	AESU1	N.A.	N.A.
IOM-A3 and IOM-A4 FCU Signal Failure	FCU	AESU1	N.A.	N.A.
IOM-A1 and IOM-A3 RA1 Signal Failure	XCVR-RA, 1	AESU1	N.A.	N.A.
IOM-A2 and IOM-A4 RA2 Signal Failure	XCVR-RA, 2	AESU1	N.A.	N.A.
IOM-A5 and IOM-A6 RA3 Signal Failure	XCVR-RA, 3	AESU1	N.A.	N.A.
IOM-A1 and IOM-A3 MMR1 Signal Failure	MMR-1	AESU1	N.A.	N.A.

EFFECTIVITY—

ALL

34-48-01

Page 1062
1 Dec 2006

**COMPONENT MAINTENANCE MANUAL**

Part No. 965-1694-001

Table 1005. Fault Data Code List (cont)

Failure Message Title	Primary Suspect LRU	Secondary Suspect LRU	Fault Confirmation Procedure (Only required for Latched Faults and if the fault is a possible Not Detectable Fault)	Fault Isolation Procedure (Only required when the fault messages involving an AESS LRU can not accuse a single LRU with 100%)
IOM-A2 and IOM-A4 MMR2 Signal Failure	MMR-2	AESU1	N.A.	N.A.
ADIRU_ADR_AFDX_Msg_1 Message Failure	ADIRU 1	AFDX NETWORK	N.A.	N.A.
ADIRU_ADR_AFDX_Msg_2 Message Failure	ADIRU 2	AFDX NETWORK	N.A.	N.A.
ADIRU_ADR_AFDX_Msg_3 Message Failure	ADIRU 3	AFDX NETWORK	N.A.	N.A.
ADIRU_GPIRS_AFDX_Msg_1 Message Failure	ADIRU 1	AFDX NETWORK	N.A.	N.A.
ADIRU_GPIRS_AFDX_Msg_2 Message Failure	ADIRU 2	AFDX NETWORK	N.A.	N.A.
ADIRU_GPIRS_AFDX_Msg_3 Message Failure	ADIRU 3	AFDX NETWORK	N.A.	N.A.
ADIRU_GPS_AFDX_Msg_1_1 Message Failure	ADIRU 1	AFDX NETWORK	N.A.	N.A.
ADIRU_GPS_AFDX_Msg_1_2 Message Failure	ADIRU 2	AFDX NETWORK	N.A.	N.A.
ADIRU_GPS_AFDX_Msg_3_3 Message Failure	ADIRU 3	AFDX NETWORK	N.A.	N.A.
ADIRU_IR_AFDX_Msg_1 Message Failure	ADIRU 1	AFDX NETWORK	N.A.	N.A.

EFFECTIVITY _____

ALL

34-48-01Page 1063
1 Dec 2006



COMPONENT MAINTENANCE MANUAL

Part No. 965-1694-001

Table 1005. Fault Data Code List (cont)

Failure Message Title	Primary Suspect LRU	Secondary Suspect LRU	Fault Confirmation Procedure (Only required for Latched Faults and if the fault is a possible Not Detectable Fault)	Fault Isolation Procedure (Only required when the fault messages involving an AESS LRU can not accuse a single LRU with 100%)
ADIRU_IR_AFDX_Msg_2 Message Failure	ADIRU 2	AFDX NETWORK	N.A.	N.A.
ADIRU_IR_AFDX_Msg_3 Message Failure	ADIRU 3	AFDX NETWORK	N.A.	N.A.
VL2_ENGINE_STATUS_Frame_1_1A Message Failure	EEC1	AFDX NETWORK	N.A.	N.A.
VL2_ENGINE_STATUS_Frame_1_2A Message Failure	EEC2	AFDX NETWORK	N.A.	N.A.
VL2_ENGINE_STATUS_Frame_1_3A Message Failure	EEC3	AFDX NETWORK	N.A.	N.A.
VL2_ENGINE_STATUS_Frame_1_4A Message Failure	EEC4	AFDX NETWORK	N.A.	N.A.
FCUB_FRAME_EFIS-1 Message Failure	CPIOM-C1	AFDX NETWORK	N.A.	N.A.
FCUB_FRAME_EFIS-2 Message Failure	CPIOM-C2	AFDX NETWORK	N.A.	N.A.
AMSG_FLAP_SYSTEM_STATUS_1 Message Failure	SFCC-1	AFDX NETWORK	N.A.	N.A.
AMSG_FLAP_SYSTEM_STATUS_2 Message Failure	SFCC-2	AFDX NETWORK	N.A.	N.A.

EFFECTIVITY—

ALL

34-48-01

Page 1064
1 Dec 2006



COMPONENT MAINTENANCE MANUAL

Part No. 965-1694-001

Table 1005. Fault Data Code List (cont)

Failure Message Title	Primary Suspect LRU	Secondary Suspect LRU	Fault Confirmation Procedure (Only required for Latched Faults and if the fault is a possible Not Detectable Fault)	Fault Isolation Procedure (Only required when the fault messages involving an AESS LRU can not accuse a single LRU with 100%)
FMS-message _CDS_Raw _Data-1 Message Failure	FMC-1	AFDX NETWORK	N.A.	N.A.
FMS-message _CDS_Raw _Data-2 Message Failure	FMC-2	AFDX NETWORK	N.A.	N.A.
FMS-message _CDS_Raw _Data-3 Message Failure	FMC-3	AFDX NETWORK	N.A.	N.A.
FW_AESS_1 Message Message Failure	CPIOM-C1	AFDX NETWORK	N.A.	N.A.
FW_AESS_2 Message Message Failure	CPIOM-C2	AFDX NETWORK	N.A.	N.A.
FW _BROADCAST_1 Message Failure	CPIOM-C1	AFDX NETWORK	N.A.	N.A.
FW _BROADCAST_2 Message Failure	CPIOM-C2	AFDX NETWORK	N.A.	N.A.
IOM-A1_Msg _dga120 Message Failure	IOM-A1	AFDX NETWORK	N.A.	N.A.
IOM-A1_Msg _dgb60 Message Failure	IOM-A1	AFDX NETWORK	N.A.	N.A.
IOM-A1_Msg _dgb240 Message Failure	IOM-A1	AFDX NETWORK	N.A.	N.A.

EFFECTIVITY _____

ALL

34-48-01

Page 1065
1 Dec 2006



COMPONENT MAINTENANCE MANUAL

Part No. 965-1694-001

Table 1005. Fault Data Code List (cont)

Failure Message Title	Primary Suspect LRU	Secondary Suspect LRU	Fault Confirmation Procedure (Only required for Latched Faults and if the fault is a possible Not Detectable Fault)	Fault Isolation Procedure (Only required when the fault messages involving an AESS LRU can not accuse a single LRU with 100%)
IOM-A1_Msg _dgb480 Message Failure	IOM-A1	AFDX NETWORK	N.A.	N.A.
IOM-A2_Msg _dga120 Message Failure	IOM-A2	AFDX NETWORK	N.A.	N.A.
IOM-A2_Msg _dgb60 Message Failure	IOM-A2	AFDX NETWORK	N.A.	N.A.
IOM-A2_Msg _dgb240 Message Failure	IOM-A2	AFDX NETWORK	N.A.	N.A.
IOM-A2_Msg _dgb480 Message Failure	IOM-A2	AFDX NETWORK	N.A.	N.A.
IOM-A3_Msg _d30 Message Failure	IOM-A3	AFDX NETWORK	N.A.	N.A.
IOM-A3_Msg _dga120 Message Failure	IOM-A3	AFDX NETWORK	N.A.	N.A.
IOM-A3_Msg _dgb60 Message Failure	IOM-A3	AFDX NETWORK	N.A.	N.A.
IOM-A3_Msg _dgb240 Message Failure	IOM-A3	AFDX NETWORK	N.A.	N.A.
IOM-A3_Msg _dgb480 Message Failure	IOM-A3	AFDX NETWORK	N.A.	N.A.
IOM-A4_Msg _d30 Message Failure	IOM-A4	AFDX NETWORK	N.A.	N.A.



COMPONENT MAINTENANCE MANUAL

Part No. 965-1694-001

Table 1005. Fault Data Code List (cont)

Failure Message Title	Primary Suspect LRU	Secondary Suspect LRU	Fault Confirmation Procedure (Only required for Latched Faults and if the fault is a possible Not Detectable Fault)	Fault Isolation Procedure (Only required when the fault messages involving an AESS LRU can not accuse a single LRU with 100%)
IOM-A4_Msg_dga120 Message Failure	IOM-A4	AFDX NETWORK	N.A.	N.A.
IOM-A4_Msg_dgb60 Message Failure	IOM-A4	AFDX NETWORK	N.A.	N.A.
IOM-A4_Msg_dgb240 Message Failure	IOM-A4	AFDX NETWORK	N.A.	N.A.
IOM-A4_Msg_dgb480 Message Failure	IOM-A4	AFDX NETWORK	N.A.	N.A.
IOM-A5_Msg_dgb60 Message Failure	IOM-A5	AFDX NETWORK	N.A.	N.A.
IOM-A6_Msg_dgb60 Message Failure	IOM-A6	AFDX NETWORK	N.A.	N.A.
L1_CDS-A661-Monitoring-Message Message Failure	DU-PFD-CAPT	AFDX NETWORK	N.A.	N.A.
L2_CDS-A661-Monitoring-Message Message Failure	DU-ND-CAPT	AFDX NETWORK	N.A.	N.A.
L3_CDS-A661-Monitoring-Message Message Failure	DU-MFD-CAPT	AFDX NETWORK	N.A.	N.A.
LGERS_Status_1 Message Failure	CPIOM-G1	CPIOM-G2	N.A.	N.A.
LGERS_Status_2 Message Failure	CPIOM-G1	CPIOM-G2	N.A.	N.A.

EFFECTIVITY—

ALL

34-48-01

Page 1067
1 Dec 2006

**COMPONENT MAINTENANCE MANUAL**

Part No. 965-1694-001

Table 1005. Fault Data Code List (cont)

Failure Message Title	Primary Suspect LRU	Secondary Suspect LRU	Fault Confirmation Procedure (Only required for Latched Faults and if the fault is a possible Not Detectable Fault)	Fault Isolation Procedure (Only required when the fault messages involving an AESS LRU can not accuse a single LRU with 100%)
Message_Frame _40_1 Message Failure	FCGU-1A	AFDX NETWORK	N.A.	N.A.
Message_Frame _40_2 Message Failure	FCGU-2A	AFDX NETWORK	N.A.	N.A.
Message_Frame _40_3 Message Failure	FCGU-3A	AFDX NETWORK	N.A.	N.A.
Message_Frame _120_1 Message Failure	FCGU-1A	AFDX NETWORK	N.A.	N.A.
Message_Frame _120_2 Message Failure	FCGU-2A	AFDX NETWORK	N.A.	N.A.
Message_Frame _120_3 Message Failure	FCGU-3A	AFDX NETWORK	N.A.	N.A.
R1_CDS-A661- Monitoring- Message Message Failure	DU-PFD-F/O	AFDX NETWORK	N.A.	N.A.
R2_CDS-A661- Monitoring- Message Message Failure	DU-ND-F/O	AFDX NETWORK	N.A.	N.A.
R3_CDS-A661- Monitoring- Message Message Failure	DU-MFD-F/O	AFDX NETWORK	N.A.	N.A.
DATE_TIME _SCI_TO_AFDX Message Failure	SCI	AFDX NETWORK	N.A.	N.A.

EFFECTIVITY _____
ALL

34-48-01

Page 1068
1 Dec 2006



COMPONENT MAINTENANCE MANUAL

Part No. 965-1694-001

Table 1005. Fault Data Code List (cont)

Failure Message Title	Primary Suspect LRU	Secondary Suspect LRU	Fault Confirmation Procedure (Only required for Latched Faults and if the fault is a possible Not Detectable Fault)	Fault Isolation Procedure (Only required when the fault messages involving an AESS LRU can not accuse a single LRU with 100%)
CMS_General _Parameters Message Failure	SCI	AFDX NETWORK	N.A.	N.A.
FCUB_FRAME _AFS-1 Message Failure	CPIOM-C1	AFDX NETWORK	N.A.	N.A.
DLCS_SPP _Aircraft _Configuration Message Failure	SCI	AFDX NETWORK	N.A.	N.A.
DLCS_SPP _System _Configuration Message Failure	SCI	AFDX NETWORK	N.A.	N.A.

EFFECTIVITY

ALL

34-48-01

Page 1069
1 Dec 2006



COMPONENT MAINTENANCE MANUAL

Part No. 965-1694-001

Table 1005. Fault Data Code List (cont)

Failure Message Title	Primary Suspect LRU	Secondary Suspect LRU	Fault Confirmation Procedure (Only required for Latched Faults and if the fault is a possible Not Detectable Fault)	Fault Isolation Procedure (Only required when the fault messages involving an AESS LRU can not accuse a single LRU with 100%)
AESU1 XTALK Message Failure (no Xtalk data from AESU2)	AESU2	AFDX NETWORK	N.A.	Determine if other aircraft systems can receive AFDX Information from AESU2. If other systems are not receiving AFDX data then replace AESU2 (refer to AMM task "removal and installation of the AESU") If fault continues, remove AESU2, do a check and repair the the AESU Position Program pin inputs. Install AESU2. If fault continues, remove AESU1 and AESU2, do a check and repair the AFDX wiring between AFDX network and AESUs. Install AESU1 and AESU2. After manipulations, select Side 2 for WXR/TAWS and XPDR/TCAS Groups on the AESS CP and then perform a Master AESU System Test.

EFFECTIVITY _____
ALL

34-48-01

Page 1070
1 Dec 2006



COMPONENT MAINTENANCE MANUAL

Part No. 965-1694-001

Table 1005. Fault Data Code List (cont)

Failure Message Title	Primary Suspect LRU	Secondary Suspect LRU	Fault Confirmation Procedure (Only required for Latched Faults and if the fault is a possible Not Detectable Fault)	Fault Isolation Procedure (Only required when the fault messages involving an AESS LRU can not accuse a single LRU with 100%)
AESU2 XTALK Message Failure (no Xtalk data from AESU1)	AESU1	AFDX NETWORK	N.A.	Determine if other aircraft systems can receive AFDX Information from AESU1. If other systems are not receiving AFDX data then replace AESU1 (refer to AMM task "removal and installation of the AESU") If fault continues, remove AESU1, do a check and repair the the AESU Position Program pin inputs. Install AESU1. If fault continues, remove AESU1 and AESU2, do a check and repair the AFDX wiring between AFDX network and AESUs. Install AESU1 and AESU2. After manipulations, select Side 1 for WXR/TAWS and XPDR/TCAS Groups on the AESS CP and then perform a Master AESU System Test.
SPP Mode S Address Failure	SCI	AESU1	N.A.	N.A.
Invalid Aircraft Type Combination	SCI	AESU1	N.A.	N.A.
SPP Audio Menu Configuration Failure	SCI	AESU1	N.A.	N.A.
SPP Audio Level Configuration Failure	SCI	AESU1	N.A.	N.A.

EFFECTIVITY

ALL

34-48-01

Page 1071
1 Dec 2006



COMPONENT MAINTENANCE MANUAL

Part No. 965-1694-001

Table 1005. Fault Data Code List (cont)

Failure Message Title	Primary Suspect LRU	Secondary Suspect LRU	Fault Confirmation Procedure (Only required for Latched Faults and if the fault is a possible Not Detectable Fault)	Fault Isolation Procedure (Only required when the fault messages involving an AESS LRU can not accuse a single LRU with 100%)
RMP 1 ARINC 429 No Data or Invalid Data to either AESU	RMP-1	AESU1	N.A.	N.A.
RMP 2 ARINC 429 No Data or Invalid Data to either AESU	RMP-2	AESU1	N.A.	N.A.
Emergency Cancel Stuck Discrete to both AESUs	ECP	AESU1	N.A.	Replace ECAM CP (refer to AMM task "removal and installation of the ECAM CP). If fault continues, remove AESU1 and AESU2, do a check and repair the Emergency Cancel wiring to AESU1 and AESU2. Install AESU1 and AESU2. After manipulations, select Side 2 for WXR/TAWS and XPDR/TCAS Groups on the AESS CP and then perform a Master AESU System Test.
ADIRU_ADR_AFDX - Faulted Data from all Systems with Flight Deck Effect	ADIRU 1	ADIRU 2	N.A.	N.A.
ADIRU_IR_AFDX - Faulted Data from all Systems with Flight Deck Effect	ADIRU 1	ADIRU 2	N.A.	N.A.

EFFECTIVITY

ALL

34-48-01

Page 1072
1 Dec 2006



COMPONENT MAINTENANCE MANUAL

Part No. 965-1694-001

Table 1005. Fault Data Code List (cont)

Failure Message Title	Primary Suspect LRU	Secondary Suspect LRU	Fault Confirmation Procedure (Only required for Latched Faults and if the fault is a possible Not Detectable Fault)	Fault Isolation Procedure (Only required when the fault messages involving an AESS LRU can not accuse a single LRU with 100%)
Faulted Position Data from all Systems with Flight Deck Effect	ADIRU 1	ADIRU 2	N.A.	N.A.
AESU1 Mode S SPP Discrepancy	AESU1	SCI	N.A.	Ensure that SPP AFDX information is available to the AESS. With Aircraft on ground and with all Engines Off, perform a Manual Reset of AESU1. If fault continues, replace AESU1 (refer to AMM task "removal and installation of the AESU") After manipulations, select Side 1 for WXR/TAWS and XPDR/TCAS Groups on the AESS CP and then perform a Master AESU System Test.
AESU2 Mode S SPP Discrepancy	AESU2	SCI	N.A.	Ensure that SPP AFDX information is available to the AESS. With Aircraft on ground and with all Engines Off, perform a Manual Reset of AESU2. If fault continues, replace AESU2 (refer to AMM task "removal and installation of the AESU") After manipulations, select Side 2 for WXR/TAWS and XPDR/TCAS Groups on the AESS CP and then perform a Master AESU System Test.

EFFECTIVITY

ALL

34-48-01

Page 1073
1 Dec 2006



COMPONENT MAINTENANCE MANUAL

Part No. 965-1694-001

Table 1005. Fault Data Code List (cont)

Failure Message Title	Primary Suspect LRU	Secondary Suspect LRU	Fault Confirmation Procedure (Only required for Latched Faults and if the fault is a possible Not Detectable Fault)	Fault Isolation Procedure (Only required when the fault messages involving an AESS LRU can not accuse a single LRU with 100%)
FMS_AFDX - Faulted Data from all Systems with Flight Deck Effect	FMC-1	FMC-2	N.A.	N.A.
FCUB_FRAME_AFS-2 Message Failure	CPIOM-C2	AFDX NETWORK	N.A.	N.A.
AESU1 SPP NVM Empty Failure	AESU1	SCI	N.A.	Ensure that SPP AFDX information is available to the AESS. With Aircraft on ground and with all Engines Off, perform a Manual Reset of AESU1. If fault continues, replace AESU1 (refer to AMM task "removal and installation of the AESU") After manipulations, select Side 1 for WXR/TAWS and XPDR/TCAS Groups on the AESS CP and then perform a Master AESU System Test.
AESU2 SPP NVM Empty Failure	AESU2	SCI	N.A.	Ensure that SPP AFDX information is available to the AESS. With Aircraft on ground and with all Engines Off, perform a Manual Reset of AESU2. If fault continues, replace AESU2 (refer to AMM task "removal and installation of the AESU") After manipulations, select Side 2 for WXR/TAWS and XPDR/TCAS Groups on the AESS CP and then perform a Master AESU System Test.

EFFECTIVITY

ALL

34-48-01

Page 1074
1 Dec 2006



COMPONENT MAINTENANCE MANUAL

Part No. 965-1694-001

Table 1005. Fault Data Code List (cont)

Failure Message Title	Primary Suspect LRU	Secondary Suspect LRU	Fault Confirmation Procedure (Only required for Latched Faults and if the fault is a possible Not Detectable Fault)	Fault Isolation Procedure (Only required when the fault messages involving an AESS LRU can not accuse a single LRU with 100%)
LGERS_Status_1 Signal Failure with Flight Deck Effects	IRDC-4A	AESU1	N.A.	N.A.
AESU1 SPP and NVM Comparison Failure	AESU1	SCI	N.A.	Ensure that SPP AFDX information is available to the AESS. With Aircraft on ground and with all Engines Off, perform a Manual Reset of AESU1. After manipulations, select Side 1 for WXR/TAWS and XPDR/TCAS Groups on the AESS CP and then perform a Master AESU System Test. If fault continues, replace AESU1 (refer to AMM task "removal and installation of the AESU")
AESU2 SPP and NVM Comparison Failure	AESU2	SCI	N.A.	Ensure that SPP AFDX information is available to the AESS. With Aircraft on ground and with all Engines Off, perform a Manual Reset of AESU2. After manipulations, select Side 2 for WXR/TAWS and XPDR/TCAS Groups on the AESS CP and then perform a Master AESU System Test. If fault continues, replace AESU2 (refer to AMM task "removal and installation of the AESU")

EFFECTIVITY

ALL

34-48-01

Page 1075
1 Dec 2006



COMPONENT MAINTENANCE MANUAL

Part No. 965-1694-001

Table 1005. Fault Data Code List (cont)

Failure Message Title	Primary Suspect LRU	Secondary Suspect LRU	Fault Confirmation Procedure (Only required for Latched Faults and if the fault is a possible Not Detectable Fault)	Fault Isolation Procedure (Only required when the fault messages involving an AESS LRU can not accuse a single LRU with 100%)
Onside AESU SPP with Offside AESU Comparison Failure	AESU1	AESU2	N.A.	Ensure that SPP AFDX information is available to the AESS. With Aircraft on ground and with all Engines Off, perform a Manual Reset of AESU1 and AESU2. If fault continues, replace AESU1 (refer to AMM task "removal and installation of the AESU") If fault continues, replace AESU2 (refer to AMM task "removal and installation of the AESU")
Air Data Switch Failure	ADIRU 1	ADIRU 2	N.A.	N.A.
IRS Source Switch Failure	ADIRU 1	ADIRU 2	N.A.	N.A.
FMS Position Validity Failure	FMC-1	FMC-2	N.A.	N.A.
ADIRU_IR_AFDX - Faulted Data from all Systems - No Flight Deck Effect	ADIRU 1	ADIRU 2	N.A.	N.A.
ADIRU_ADR_AFDX - Faulted Data from all Systems - No Flight Deck Effect	ADIRU 1	ADIRU 2	N.A.	N.A.
PRIM FPGRIO Validity Failure	FCGU-1A	AESU1	N.A.	N.A.
FWS Active Validity Failure	CPIOM-C1	CPIOM-C2	N.A.	N.A.

EFFECTIVITY—

ALL

34-48-01

Page 1076
1 Dec 2006

**COMPONENT MAINTENANCE MANUAL**

Part No. 965-1694-001

Table 1005. Fault Data Code List (cont)

Failure Message Title	Primary Suspect LRU	Secondary Suspect LRU	Fault Confirmation Procedure (Only required for Latched Faults and if the fault is a possible Not Detectable Fault)	Fault Isolation Procedure (Only required when the fault messages involving an AECS LRU can not accuse a single LRU with 100%)
AP Status Validity Failure	FCGU-1A	AESU1	N.A.	N.A.
PRIM ADR Switch Validity Failure	FCGU-1A	AESU1	N.A.	N.A.
FMS_AFDX - Faulted Data from all Systems - No Flight Deck Effect	FMC-1	FMC-2	N.A.	N.A.
AMSG_FLAP _SYSTEM _STATUS_2 Signal Failure with Flight Deck Effect	SFCC-2	AESU1	N.A.	N.A.
FMS Guidance Master Validity Failure	FMC-1	FMC-2	N.A.	N.A.
Radio Altitude - Faulted Data from all systems with Flight Deck Effect	XCVR-RA, 1	XCVR-RA, 2	N.A.	N.A.
FMS VdRef and VdAltRange Validity Failure	FMC-1	FMC-2	N.A.	N.A.
IOM-A5_Msg _d30 Message Failure	IOM-A5	AFDX NETWORK	N.A.	N.A.

EFFECTIVITY _____

ALL

34-48-01Page 1077
1 Dec 2006



COMPONENT MAINTENANCE MANUAL

Part No. 965-1694-001

Table 1005. Fault Data Code List (cont)

Failure Message Title	Primary Suspect LRU	Secondary Suspect LRU	Fault Confirmation Procedure (Only required for Latched Faults and if the fault is a possible Not Detectable Fault)	Fault Isolation Procedure (Only required when the fault messages involving an AESS LRU can not accuse a single LRU with 100%)
IOM-A6_Msg_d30 Message Failure	IOM-A6	AFDX NETWORK	N.A.	N.A.
IOM-A1 and IOM-A2 and IOM-A3 and IOM-A4 MMR Signal Failure - Faulted Data from all systems with Flight Deck Effect	MMR-1	MMR-2	N.A.	N.A.

D. IOM Procedure (Subtask 34-48-01-700-003-A01)

(1) Description

- (a) The AESS IOM fault history parser tool executable file (*.exe) is a diagnostic tool. It can be installed on any Windows XP based laptop or PC for the purpose of downloading fault history information from each of the modules in the AESU. The modules are WXR, TPL, EGPWS and IOM. Bite information from the RTU and WADU components of the radar system can also be downloaded using this tool.
- (b) An Ethernet cross cable is required to connect between the IOM core (top Ethernet port on right front panel of AESU above IOM nameplate) and the PC. When you FTP data files in AESU memory, you have the option to do a selective dump of files or all files. During the initial launch of this product, engineering prefers that you dump all files. The program selectively parses the data when the operator clicks on any of the tabs in the Parse column of the GUI, such as "Normal Faults Hist". The user then has the option to save information displayed in Excel format. This is useful for filtering fault data.

(2) Setup for the PC

- (a) Changes to the host file of the PC are required so that direct addressing from the laptop to AESU is simplified. Figure 1001 (GRAPHIC 34-48-01-99B-805-A01) is a sample of the host file.

EFFECTIVITY

ALL

34-48-01Page 1078
1 Dec 2006



COMPONENT MAINTENANCE MANUAL

Part No. 965-1694-001

Copyright (c) 1993-1999 Microsoft Corp.

```
#
# This is a sample HOSTS file used by Microsoft TCP/IP for Windows.
#
# This file contains the mappings of IP addresses to host names. Each
# entry should be kept on an individual line. The IP address should
# be placed in the first column followed by the corresponding host name.
# The IP address and the host name should be separated by at least one
# space.
#
# Additionally, comments (such as these) may be inserted on individual
# lines or following the machine name denoted by a '#' symbol.
#
# For example:
#
# 102.54.94.97 rhino.acme.com      # source server
# 38.25.63.10  x.acme.com         # x client host
#
127.0.0.1    localhost
151.150.106.45 ica
```

ID-170167

Figure 1001. (Sheet 1 of 1) Sample Host File (GRAPHIC 34-48-01-99B-805-A01)

- (b) Add the following to address modules in the AESU:
 - 192.168.1.50 WXR
 - 192.168.1.10 CORE
 - 192.168.1.20 COMM
 - 192.168.1.30 EGPWM
 - 192.168.1.40 TPL
- (c) Click on Start / Settings / Control Panel / Network Connections / Local Area Connections.
- (d) Under Local Area Connections, click on Properties and scroll down until you see Internet Protocol TCP/IP.
- (e) Click on Properties and use the following IP address for the manual configuration:
 - 192.168.1.12
 - 255.255.255.0 for the subnet address.
- (f) Click OK, OK.
- (g) Create a folder in a user directory (AESS) to contain the FaultHistParser.exe program and Faultdef.bin file.
- (h) Start the FaultHistParser.exe program.
- (i) Select address 192.168.1.10 in the target IP address drop-down box.

EFFECTIVITY

ALL

34-48-01Page 1079
1 Dec 2006



COMPONENT MAINTENANCE MANUAL

Part No. 965-1694-001

(3) Using the Parser Tool

- (a) Click on the All Files button in the FTP column. This dumps AESU fault history to the laptop memory for parsing. Refer to Figure 1002 (GRAPHIC 34-48-01-99B-806-A01).
- (b) Click on the Normal Fault History button in the PARSE column.
- (c) Save the display output to an excel file. Refer to Figure 1003 (GRAPHIC 34-48-01-99B-807-A01).
- (d) Perform similar dumps for other tabs of interest.
- (e) Compare the fault codes listed in Table 1006 with the fault matrix containing the explanation.
- (f) Consult with the AESU system engineer support focal for additional support.

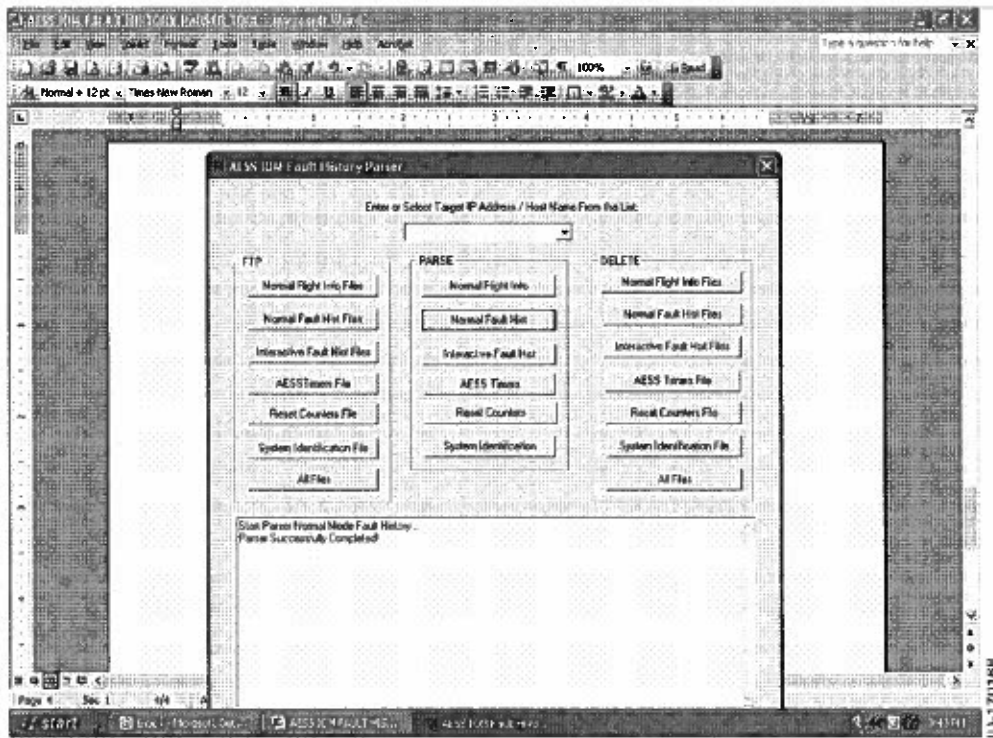


Figure 1002. (Sheet 1 of 1) Parser Tool Display (GRAPHIC 34-48-01-99B-806-A01)

EFFECTIVITY _____
ALL

34-48-01

Page 1080
1 Dec 2006

Part No. 965-1694-001



ALL

34-48-01

Page 1081
1 Dec 2006



COMPONENT MAINTENANCE MANUAL

Part No. 965-1694-001

Table 1006. Fault List Summary

Fault Event Code	Test Name	Fault Type	Fault Category	AESS Consequences	Aircraft Consequences
Four digit code. Unique for each AESS fault.	Each test name should be prefaced by the applicable function Module that performs the BITE Logic: IOM, WXR, TPL, EGPWM, AESSCP, RTU, WADU. If applicable, the board of the AESU "module" should also be identified.	Examples: AESS Internal, LRU Internal, External, System, Software Exception	Indicates whether the fault is Fatal or Non-Fatal. A Fatal fault results in the watchdog to time-out and a reset occurs. Fatal faults are not logged or reported.	Includes the effects or consequences on the AESS performance or functionality. For example: WXR PWS not available, GPWS functions comes from non-master.	Includes the effects or consequences of the fault on the Aircraft. For example: Loss of GPWS function, loss of PWS, loss of XPDR, loss of Audio Output, loss of Terrain function.
IOM Module Tests					
1	IOM CORE Board CPU Health Test	Internal	Fatal	IOM CORE Board is inoperative.	Loss of all AESS Functions for this AESU. No system impact since an alternate AESU is available.
2	IOM COMM Board CPU Health Test	Internal	Fatal	IOM COMM Board is inoperative.	Loss of all AESS Functions for this AESU. No system impact since an alternate AESU is available.
3	IOM CORE Board BOOT Flash CRC Test	Internal	Non-fatal	IOM CORE Board is inoperative.	Loss of all AESS Functions for this AESU. No system impact since an alternate AESU is available.

EFFECTIVITY—

ALL

34-48-01

Page 1082
1 Dec 2006



COMPONENT MAINTENANCE MANUAL

Part No. 965-1694-001

Table 1006. Fault List Summary (cont)

Fault Event Code	Test Name	Fault Type	Fault Category	AESS Consequences	Aircraft Consequences
4	IOM COMM Board BOOT Flash CRC Test	Internal	Non-fatal	IOM COMM Board is inoperative.	Loss of all AESS Functions for this AESU. No system impact since an alternate AESU is available.
5	IOM CORE Board Application Program NVM Flash Integrity Test	Internal	Non-fatal	IOM CORE Board is inoperative.	Loss of all AESS Functions for this AESU. No system impact since an alternate AESU is available.
6	IOM COMM Board Application Program NVM Flash Integrity Test	Internal	Non-fatal	IOM COMM Board is inoperative.	Loss of all AESS Functions for this AESU. No system impact since an alternate AESU is available.
7	IOM CORE Board NVM Read or Write Fault	Internal	Non-fatal	Stored data is unavailable	None
8	IOM CORE Board Controls Memorization Data Validation Test	Internal	Non-fatal	Stored data is unavailable	None
9	IOM CORE Board SPP Stored Data Validation Test	Internal	Non-fatal	Stored data is unavailable	None
10	IOM CORE Board AESU Position Stored Data Validation Test	Internal	Non-fatal	Stored data is unavailable	None
11	Reserved				
12	IOM CORE Board +5V Supply Test	Internal	Non-fatal	Out-of-spec board voltage may cause or contribute to other hardware-related failures, resulting in loss of IOM.	None since alternate AESU is available

EFFECTIVITY

ALL

34-48-01

Page 1083
1 Dec 2006



COMPONENT MAINTENANCE MANUAL

Part No. 965-1694-001

Table 1006. Fault List Summary (cont)

Fault Event Code	Test Name	Fault Type	Fault Category	AESS Consequences	Aircraft Consequences
13	IOM COMM Board +5V Supply Test	Internal	Non-fatal	Out-of-spec board voltage may cause or contribute to other hardware-related failures, resulting in loss of IOM.	None since alternate AESU is available
14	IOM COMM Board Analog-to-Digital Converter Test	Internal	Non-fatal	Unable to check voltage supplies or measure COMM board temperature	Loss of IOM functionality. No system impact since an alternate AESU is available.
15	IOM CORE Board Analog-to-Digital Converter Test	Internal	Non-fatal	Unable to check voltage supplies or measure CORE board temperature	Loss of IOM functionality. No system impact since an alternate AESU is available.
16	IOM COMM Board 3.3V Supply Test	Internal	Non-fatal	Out-of-spec board voltage may cause or contribute to other hardware-related failures, resulting in loss of IOM.	None since alternate AESU is available
17	IOM COMM Board 2.5V Supply Test	Internal	Non-fatal	Out-of-spec board voltage may cause or contribute to other hardware-related failures, resulting in loss of IOM.	None since alternate AESU is available
18	IOM COMM Board 2.0V Supply Test	Internal	Non-fatal	Out-of-spec board voltage may cause or contribute to other hardware-related failures, resulting in loss of IOM.	None since alternate AESU is available

EFFECTIVITY

ALL

34-48-01

Page 1084
1 Dec 2006

**COMPONENT MAINTENANCE MANUAL**

Part No. 965-1694-001

Table 1006. Fault List Summary (cont)

Fault Event Code	Test Name	Fault Type	Fault Category	AESS Consequences	Aircraft Consequences
19	IOM COMM Board 1.8V Supply Test	Internal	Non-fatal	Out-of-spec board voltage may cause or contribute to other hardware-related failures, resulting in loss of IOM.	None since alternate AESU is available
20	IOM CORE Board 3.3V Supply Test	Internal	Non-fatal	Out-of-spec board voltage may cause or contribute to other hardware-related failures, resulting in loss of IOM.	None since alternate AESU is available
21	IOM CORE Board 2.5V Supply Test	Internal	Non-fatal	Out-of-spec board voltage may cause or contribute to other hardware-related failures, resulting in loss of IOM.	None since alternate AESU is available
22	IOM CORE Board 2.0V Supply Test	Internal	Non-fatal	Out-of-spec board voltage may cause or contribute to other hardware-related failures, resulting in loss of IOM.	None since alternate AESU is available
23	IOM CORE Board +12V Supply Test	Internal	Non-fatal	Out-of-spec board voltage may cause or contribute to other hardware-related failures, resulting in loss of IOM.	None since alternate AESU is available
24	IOM CORE Board -12V Supply Test	Internal	Non-fatal	Out-of-spec board voltage may cause or contribute to other hardware-related failures, resulting in loss of IOM.	None since alternate AESU is available

EFFECTIVITY _____

ALL

34-48-01Page 1085
1 Dec 2006



COMPONENT MAINTENANCE MANUAL

Part No. 965-1694-001

Table 1006. Fault List Summary (cont)

Fault Event Code	Test Name	Fault Type	Fault Category	AESS Consequences	Aircraft Consequences
25	IOM CORE Board Temperature Sensor Test	Internal	Non-fatal	Out-of-spec board temperatures indicate that the sensor is failed or A to D can not read the sensor	None
26	IOM COMM Board Temperature Sensor Test	Internal	Non-fatal	Out-of-spec board temperatures indicate that the sensor is failed or A to D can not read the sensor	None
27	IOM WXR PSM Analog-to-Digital Converter Test	Internal	Non-fatal	Unable to check voltage supplies	None since alternate AESU is available
28	IOM WXR PSM +5 VDC Power Supply Test	Internal	Non-fatal	Out-of-spec board voltage may cause or contribute to other hardware-related failures, resulting in loss of WXR functions.	None since alternate AESU is available
29	IOM WXR PSM +7 VDC Power Supply Test	Internal	Non-fatal	Out-of-spec board voltage may cause or contribute to other hardware-related failures, resulting in loss of WXR functions.	None since alternate AESU is available
30	IOM WXR PSM +15 VDC Power Supply Test	Internal	Non-fatal	Out-of-spec board voltage may cause or contribute to other hardware-related failures, resulting in loss of WXR functions.	None since alternate AESU is available

EFFECTIVITY

ALL

34-48-01

Page 1086
1 Dec 2006



COMPONENT MAINTENANCE MANUAL

Part No. 965-1694-001

Table 1006. Fault List Summary (cont)

Fault Event Code	Test Name	Fault Type	Fault Category	AESS Consequences	Aircraft Consequences
31	IOM WXR PSM -15 VDC Power Supply Test	Internal	Non-fatal	Out-of-spec board voltage may cause or contribute to other hardware-related failures, resulting in loss of WXR functions.	None since alternate AESU is available
32	IOM WXR PSM 28 VDC Power Supply Test	Internal	Non-fatal	Out-of-spec board voltage may cause or contribute to other hardware-related failures, resulting in loss of WXR functions.	None since alternate AESU is available
33	IOM CORE Board AESS Timers Data Validation Test	Internal	Non-fatal	Stored data is unavailable	None
34	IOM CORE Board AESS Software Activation and Reset Counters Data Validation Test	Internal	Non-fatal	Stored data is unavailable	None
35	IOM TPL PSM Analog-to-Digital Converter Test	Internal	Non-fatal	Unable to check voltage supplies	None since alternate AESU is available
36	IOM TPL PSM +5 VDC Power Supply Test	Internal	Non-fatal	Out-of-spec board voltage may cause or contribute to other hardware-related failures, resulting in loss of TPL functions.	None since alternate AESU is available.
37	Reserved				

EFFECTIVITY

ALL

34-48-01

Page 1087
1 Dec 2006



COMPONENT MAINTENANCE MANUAL

Part No. 965-1694-001

Table 1006. Fault List Summary (cont)

Fault Event Code	Test Name	Fault Type	Fault Category	AESS Consequences	Aircraft Consequences
38	IOM TPL PSM +12 VDC Power Supply Test	Internal	Non-fatal	Out-of-spec board voltage may cause or contribute to other hardware-related failures, resulting in loss of TPL functions.	None since alternate AESU is available.
39	IOM TPL PSM -12 VDC Power Supply Test	Internal	Non-fatal	Out-of-spec board voltage may cause or contribute to other hardware-related failures, resulting in loss of TPL functions.	None since alternate AESU is available.
40	IOM TPL PSM +40 VDC Power Supply Test	Internal	Non-fatal	Out-of-spec board voltage may cause or contribute to other hardware-related failures, resulting in loss of TPL functions.	None since alternate AESU is available.
41	IOM SIS System Area CRC Test	Internal	Non-fatal	No access to AESU P/Ns of hardware, software, and databases, via external SIS P/N reader	None.

EFFECTIVITY _____
ALL

34-48-01

Page 1088
1 Dec 2006



COMPONENT MAINTENANCE MANUAL

Part No. 965-1694-001

Table 1006. Fault List Summary (cont)

Fault Event Code	Test Name	Fault Type	Fault Category	AESS Consequences	Aircraft Consequences
42	IOM Audio loopback Test	Internal	Non-fatal	At least one of the Audio Outputs has failed	If both Audio Outputs have failed, then No audio. If only one of the Audio outputs is failed, then audio is available on the other output. However, loss of aural alerts does not affect assertion of visual alerts (icons, or background images, or textual messages on ND and PFD).
43	IOM CORE Board discrete Input/Output loopback Tests	Internal	Non-fatal	Since the loopback failure indicates that the transmit/receive datapath is unreliable, the discrete input/output should not be used.	No discrete input data or discrete outputs.
44	IOM COMM Board discrete Input/Output loopback Tests	Internal	Non-fatal	Since the loopback failure indicates that the transmit/receive datapath is unreliable, the discrete input/output should not be used.	No discrete input data or discrete outputs.
45	IOM CORE Board I/O FPGA Register Test	Internal	Non-fatal	Discrete inputs and outputs are not reliable. Loss of IOM functionality.	None since alternate AESU is available.

EFFECTIVITY

ALL

34-48-01

Page 1089
1 Dec 2006

**COMPONENT MAINTENANCE MANUAL**

Part No. 965-1694-001

Table 1006. Fault List Summary (cont)

Fault Event Code	Test Name	Fault Type	Fault Category	AESS Consequences	Aircraft Consequences
46	IOM COMM Board I/O FPGA Register Test	Internal	Non-fatal	Discrete inputs and outputs are not reliable. Loss of IOM functionality.	None since alternate AESU is available.
47	IOM Audio FPGA register Test	Internal	Non-fatal	Audio FPGA is failed	No audio. However, loss of aural alerts does not affect assertion of visual alerts (icons, or background images, or textual messages on ND and PFD).
48	IOM Audio Flash CRC Test	Internal	Non-fatal	No audio functionality	Unable to provide audio alerts. However, loss of aural alerts does not affect assertion of visual alerts (icons, or background images, or textual messages on ND and PFD).
49	IOM A429 FPGA register Test	Internal	Non-fatal	Discrete inputs and outputs are not reliable. The A429 FPGA device does not perform its intended functions. Loss of IOM functionality.	Loss of all AESS Functions for this AESU. No system impact since an alternate AESU is available.

 EFFECTIVITY _____
 ALL
34-48-01
 Page 1090
 1 Dec 2006

**COMPONENT MAINTENANCE MANUAL**

Part No. 965-1694-001

Table 1006. Fault List Summary (cont)

Fault Event Code	Test Name	Fault Type	Fault Category	AESS Consequences	Aircraft Consequences
50	IOM A429 FPGA Output Internal Wraparound Activity Test	Internal	Non-fatal	Since the wraparound failure indicates that the transmit /receive datapath is unreliable, the A429 FPGA device should not be used, resulting in no ARINC 429 data output	None since alternate AESU is available.
51	Reserved				
52	IOM/EGPWS Ethernet Interface Test	Internal	Non-fatal	No data from EGPWS	Loss of EGPWS function for the AESU. No system impact since the EGPWS functionality is available from the alternate AESU.
53	IOM/TPL Ethernet Interface Test	Internal	Non-fatal	No data from the TPL	Loss of TPL function for the AESU. No system impact since the TPL functionality is available from the alternate AESU.
54	IOM/WXR Ethernet Interface Test	Internal	Non-fatal	No data from the WXR	Loss of WXR function for the AESU. No system impact since the WXR functionality is available from the alternate AESU.

EFFECTIVITY _____

ALL

34-48-01Page 1091
1 Dec 2006

**COMPONENT MAINTENANCE MANUAL**

Part No. 965-1694-001

Table 1006. Fault List Summary (cont)

Fault Event Code	Test Name	Fault Type	Fault Category	AESS Consequences	Aircraft Consequences
55	IOM SIS User Area CRC Test	Internal	Non-fatal	No access to AESU P/Ns of hardware, software, and databases, via external SIS P/N reader	None.
56	IOM Hardware /Software Compatibility Test	Internal	Non-fatal	IOM is not usable. Loss of all AESS functions for this particular AESU since IOM software is not loadable (due to its incompatibility with the IOM hardware).	If the alternate AESU is using the same IOM software /hardware, the same incompatibility problem exists.
57	IOM EGPWS/IOM Software Compatibility Test	Internal	Non-fatal	EGPWS/IOM Interface is unreliable and all EGPWS data is ignored.	Loss of all EGPWS functions for the AESU. No system impact since the EGPWS functionality is available from the alternate AESU.
58	IOM TPL/IOM Software Compatibility Test	Internal	Non-fatal	TPL/IOM Interface is unreliable and all TPL data is ignored.	Loss of all TPL functions for the AESU. No system impact since the TPL functionality is available from the alternate AESU.
59	IOM WXR/IOM Software Compatibility Test	Internal	Non-fatal	WXR/IOM Interface is unreliable and all WXR data is ignored.	Loss of all WXR functions for the AESU. No system impact since the WXR functionality is available from the alternate AESU.

EFFECTIVITY

ALL

34-48-01Page 1092
1 Dec 2006



COMPONENT MAINTENANCE MANUAL

Part No. 965-1694-001

Table 1006. Fault List Summary (cont)

Fault Event Code	Test Name	Fault Type	Fault Category	AESS Consequences	Aircraft Consequences
60	IOM AFDX Internal Loopback Test	Internal	Non-fatal	None. Redundant channel available.	None
61	IOM ES AFDX Multiple Event Upset Test	Internal	Non-fatal	AFDX processing not reliable.	Loss of all AESS Functions, except for XPDR.
62	IOM ES AFDX Self-Test Status Test	Internal	Non-fatal	No AFDX Interface	Loss of all AESS Functions, except for XPDR.
63	IOM ES AFDX Configuration Test	Internal	Non-fatal	No AFDX Interface	Loss of all AESS Functions, except for XPDR.
64	IOM CORE Temperature Exceedance Test	Internal	Non-fatal	Board temperature exceeding nominal value may result in unpredictable or indeterminate AESS board behavior. No immediate effect, however, continued excess board temperature may cause or contribute to other hardware-related failures, resulting in loss of the AESS functions.	No system impact since an alternate AESU is available.

EFFECTIVITY

ALL

34-48-01

Page 1093
1 Dec 2006



COMPONENT MAINTENANCE MANUAL

Part No. 965-1694-001

Table 1006. Fault List Summary (cont)

Fault Event Code	Test Name	Fault Type	Fault Category	AESS Consequences	Aircraft Consequences
65	IOM COMM Temperature Exceedance Test	Internal	Non-fatal	Board temperature exceeding nominal value may result in unpredictable or indeterminate AESS board behavior. No immediate effect, however, continued excess board temperature may cause or contribute to other hardware-related failures, resulting in loss of the AESS functions.	No system impact since an alternate AESU is available.
66	IOM AESU Onside / Offside Compatibility Test	Internal	Non-fatal	Loss of communication between the Onside AESU and the Offside AESU.	None since the Master AESU is operational
67	IOM Watchdog Monitor Test	Internal	Non-fatal	AESU is not reliable/usable	If Master AESU has the Watchdog Timeout, then no Data is output on AFDX or ARINC429 during the recovery from reset.
68	Reserved				
69	IOM Invalid Obstacle Data Test	Internal	Non-fatal	Display of obstacle icons on CDS not available	Display of obstacle icons on CDS not available
70	IOM Loss-of-update Obstacle Data Test	Internal	Non-fatal	Display of obstacle icons on CDS not available	Display of obstacle icons on CDS not available
71	Reserved				

 EFFECTIVITY _____
 ALL

34-48-01

 Page 1094
 1 Dec 2006

**COMPONENT MAINTENANCE MANUAL**

Part No. 965-1694-001

Table 1006. Fault List Summary (cont)

Fault Event Code	Test Name	Fault Type	Fault Category	AESS Consequences	Aircraft Consequences
72	IOM Invalid PWS Data Test	Internal	Non-fatal	Display of PWS icons on CDS not available	Display of PWS icons on CDS not available
73	IOM Hardware Compatibility Code Integrity Test	Internal	Non-fatal	IOM is not usable. Loss of all AESS functions for this particular AESU since IOM software is not loadable (due to its incompatibility with the IOM hardware).	If the alternate AESU is using the same IOM software /hardware, the same incompatibility problem exists.
74	IOM SPP NVM Empty	Internal	Non-fatal	All (cfg) SPP values are set to Invalid	Mode S XPDR is not operational. In some cases AESS functions (WXR, GPWS, TERRAIN, TCAS) use default values.
75	IOM SIS Part Number Mismatch Test	Internal	Non-fatal	SIS User Area Information is not correct	SIS User Area Information is not correct
76	IOM Voice Signature Test	Internal	Non-fatal	Requested voice unavailable	Audio not heard on the Flight Deck
77	IOM Terrain Background Late for Captain's ND Test	Internal	Non-fatal	Receiving CDS system rejects ND image data as faulted if not received within specified rate.	None
78	IOM Terrain Background Invalid for Captain's ND Test	Internal	Non-fatal	Receiving CDS system rejects ND image data as faulted if not received within specified rate.	None

EFFECTIVITY _____

ALL

34-48-01Page 1095
1 Dec 2006

**COMPONENT MAINTENANCE MANUAL**

Part No. 965-1694-001

Table 1006. Fault List Summary (cont)

Fault Event Code	Test Name	Fault Type	Fault Category	AESS Consequences	Aircraft Consequences
79	IOM Terrain Background Lack of Update for Captain's ND Test	Internal	Non-fatal	Receiving CDS system rejects ND image data as faulted if not received within specified rate.	None
80	IOM Terrain Background Overflow for Captain's ND Test	Internal	Non-fatal	Receiving CDS system rejects ND image data as faulted if not received within specified rate.	None
81	IOM WXR Background Late for Captain's ND Test	Internal	Non-fatal	Receiving CDS system rejects ND image data as faulted if not received within specified rate.	None
82	IOM WXR Background Invalid for Captain's ND Test	Internal	Non-fatal	Receiving CDS system rejects ND image data as faulted if not received within specified rate.	None
83	IOM WXR Background Lack of Update for Captain's ND Test	Internal	Non-fatal	Receiving CDS system rejects ND image data as faulted if not received within specified rate.	None
84	IOM WXR Background Overflow for Captain's ND Test	Internal	Non-fatal	Receiving CDS system rejects ND image data as faulted if not received within specified rate.	None
85	IOM Terrain Background Late for FO's ND Test	Internal	Non-fatal	Receiving CDS system rejects ND image data as faulted if not received within specified rate.	None

 EFFECTIVITY _____
 ALL
34-48-01
 Page 1096
 1 Dec 2006

**COMPONENT MAINTENANCE MANUAL**

Part No. 965-1694-001

Table 1006. Fault List Summary (cont)

Fault Event Code	Test Name	Fault Type	Fault Category	AESS Consequences	Aircraft Consequences
86	IOM Terrain Background Invalid for FO's ND Test	Internal	Non-fatal	Receiving CDS system rejects ND image data as faulted if not received within specified rate.	None
87	IOM Terrain Background Lack of Update for FO's ND Test	Internal	Non-fatal	Receiving CDS system rejects ND image data as faulted if not received within specified rate.	None
88	IOM Terrain Background Overflow for First Officer's ND Test	Internal	Non-fatal	Receiving CDS system rejects ND image data as faulted if not received within specified rate.	None
89	IOM WXR Background Late for FO's ND Test	Internal	Non-fatal	Receiving CDS system rejects ND image data as faulted if not received within specified rate.	None
90	IOM WXR Background Invalid for FO's ND Test	Internal	Non-fatal	Receiving CDS system rejects ND image data as faulted if not received within specified rate.	None
91	IOM WXR Background Lack of Update for Captain's ND Test	Internal	Non-fatal	Receiving CDS system rejects ND image data as faulted if not received within specified rate.	None
92	IOM WXR Background Overflow for First Officer's ND Test	Internal	Non-fatal	Receiving CDS system rejects ND image data as faulted if not received within specified rate.	None

EFFECTIVITY _____

ALL

34-48-01Page 1097
1 Dec 2006

**COMPONENT MAINTENANCE MANUAL**

Part No. 965-1694-001

Table 1006. Fault List Summary (cont)

Fault Event Code	Test Name	Fault Type	Fault Category	AESS Consequences	Aircraft Consequences
93	IOM Terrain Elevation Data Late for Captain's VD Test	Internal	Non-fatal	Receiving CDS system rejects VD image data as faulted if not received within specified rate.	None
94	IOM Terrain Elevation Data Invalid for Captain's VD Test	Internal	Non-fatal	Receiving CDS system rejects VD image data as faulted if not received within specified rate.	None
95	IOM Terrain Elevation Data Lack of Update for Captain's VD Test	Internal	Non-fatal	Receiving CDS system rejects VD image data as faulted if not received within specified rate.	None
96	IOM WXR Backgrounds Late for Captain's VD Test	Internal	Non-fatal	Receiving CDS system rejects VD image data as faulted if not received within specified rate.	None
97	IOM WXR Background Invalid for Captain's VD Test	Internal	Non-fatal	Receiving CDS system rejects VD image data as faulted if not received within specified rate.	None
98	IOM WXR Background Lack of Update for Captain's VD Test	Internal	Non-fatal	Receiving CDS system rejects VD image data as faulted if not received within specified rate.	None
99	IOM Terrain Elevation Data Late for FO's VD Test	Internal	Non-fatal	Receiving CDS system rejects VD image data as faulted if not received within specified rate.	None

EFFECTIVITY _____
ALL

34-48-01

Page 1098
1 Dec 2006

**COMPONENT MAINTENANCE MANUAL**

Part No. 965-1694-001

Table 1006. Fault List Summary (cont)

Fault Event Code	Test Name	Fault Type	Fault Category	AESS Consequences	Aircraft Consequences
100	IOM Terrain Elevation Data Invalid for FO's VD Test	Internal	Non-fatal	Receiving CDS system rejects VD image data as faulted if not received within specified rate.	None
101	IOM Terrain Elevation Data Lack of Update for FO's VD Test	Internal	Non-fatal	Receiving CDS system rejects VD image data as faulted if not received within specified rate.	None
102	IOM WXR Background Late for FO's VD Test	Internal	Non-fatal	Receiving CDS system rejects VD image data as faulted if not received within specified rate.	None
103	IOM WXR Background Invalid for FO's VD Test	Internal	Non-fatal	Receiving CDS system rejects VD image data as faulted if not received within specified rate.	None
104	IOM WXR Background Lack of Update for FO's VD Test	Internal	Non-fatal	Receiving CDS system rejects VD image data as faulted if not received within specified rate.	None
105	IOM TPL Display Traffic Data Late Test	Internal	Non-fatal	Receiving CDS system rejects TPL traffic data as faulted if not received within specified rate.	None
106	IOM TPL Display Traffic Data Lack-of-Update Test	Internal	Non-fatal	Receiving CDS system rejects TPL traffic data as faulted if not received within specified rate.	None

EFFECTIVITY

ALL

34-48-01Page 1099
1 Dec 2006



COMPONENT MAINTENANCE MANUAL

Part No. 965-1694-001

Table 1006. Fault List Summary (cont)

Fault Event Code	Test Name	Fault Type	Fault Category	AESS Consequences	Aircraft Consequences
107	Reserved				
108	IOM TPL Display Traffic Data Invalid Test	Internal	Non-fatal	Receiving CDS system rejects TPL traffic data as faulted if not received within specified rate.	None
109	IOM Display Symbol thread loss-of-function (LOF) test	Internal	Non-fatal	Loss of NavDisplay	None
110	IOM Display Image thread loss-of-function (LOF) test	Internal	Non-fatal	Loss of NavDisplay	None
111	IOM Display Vertical Path thread loss-of-function (LOF) test	Internal	Non-fatal	Loss of display of vertical path data	None
112	IOM IO Application thread loss-of-function (LOF) test	Internal	Fatal	Loss of functionality associated with Alerts, A661, Control Panel I/O, Controls, AFDX payload processing.	Loss of all AESS Functions for this AESU.
113	IOM IO thread loss-of-function (LOF) test	Internal	Fatal	Loss of functionality associated with soft program pins, source selection, A429 and discrete processing.	Loss of all AESS Functions for this AESU.
114	IOM EGPWS IO thread loss-of-function (LOF) test	Internal	Non-fatal	No data from EGPWS	Loss of EGPWS function for this AESU.

**COMPONENT MAINTENANCE MANUAL**

Part No. 965-1694-001

Table 1006. Fault List Summary (cont)

Fault Event Code	Test Name	Fault Type	Fault Category	AESS Consequences	Aircraft Consequences
115	IOM Radar IO thread loss-of-function (LOF) test	Internal	Non-fatal	No data from the WXR	Loss of WXR function for this AESU.
116	IOM TCAS IO thread loss-of-function (LOF) test	Internal	Non-fatal	No data from the TPL	Loss of TPL function for this AESU.
117	IOM AFDX Sample Port thread loss-of-function (LOF) test	Internal	Fatal	Loss of all AFDX input/output capability	Loss of all AESS Functions for this AESU.
118	IOM CORE BITE ROM thread loss-of-function (LOF) test	Internal	Non-fatal	Loss of fault monitoring capability.	None
119	IOM CMF Event Records thread loss-of-function (LOF) test	Internal	Non-fatal	Loss of fault monitoring capability.	None
120	IOM CORE BITE Internal thread loss-of-function (LOF) test	Internal	Non-fatal	Loss of fault monitoring capability.	None
121	IOM CORE BITE Monitor Faults thread loss-of-function (LOF) test	Internal	Non-fatal	Loss of fault monitoring capability.	None
122	IOM CORE BITE Dataload thread loss-of-function (LOF) test	Internal	Non-fatal	Loss of fault monitoring capability.	None
123	IOM CMF Interactive thread loss-of-function (LOF) test	Internal	Non-fatal	Loss of fault monitoring capability.	None

EFFECTIVITY

ALL

34-48-01Page 1101
1 Dec 2006

**COMPONENT MAINTENANCE MANUAL**

Part No. 965-1694-001

Table 1006. Fault List Summary (cont)

Fault Event Code	Test Name	Fault Type	Fault Category	AESS Consequences	Aircraft Consequences
124	IOM CMF Collect Faults thread loss-of-function (LOF) test	Internal	Non-fatal	Loss of fault monitoring capability.	None
125	IOM WXR Comm thread loss-of-function (LOF) test	Internal	Non-fatal	Loss of communication between TPL and IOM.	None
126	IOM TPL Comm thread loss-of-function (LOF) test	Internal	Non-fatal	Loss of communication between WXR and IOM.	None
127	IOM EGPWS Comm thread loss-of-function (LOF) test	Internal	Non-fatal	Loss of communication between EGPWS and IOM.	None
128	IOM COMM BITE ROM thread loss-of-function (LOF) test	Internal	Non-fatal	Loss of fault monitoring capability.	None
129	IOM ADIS Configuration Modification thread loss-of-function (LOF) test	Internal	Non-fatal	Loss of parameter write access to ADIS users	None
130	IOM COMM BITE Internal thread loss-of-function (LOF) test	Internal	Non-fatal	Loss of fault monitoring capability.	None
131	IOM ADIS Internal Parameter Access thread loss-of-function (LOF) test	Internal	Non-fatal	Loss of parameter read access to ADIS users	None
132	IOM COMM BITE Dataload thread loss-of-function (LOF) test	Internal	Non-fatal	Loss of fault monitoring capability.	None

EFFECTIVITY _____

ALL

34-48-01Page 1102
1 Dec 2006

**COMPONENT MAINTENANCE MANUAL**

Part No. 965-1694-001

Table 1006. Fault List Summary (cont)

Fault Event Code	Test Name	Fault Type	Fault Category	AESS Consequences	Aircraft Consequences
133	IOM Display Symbol Thread Overrun test	Internal	Non-fatal	Potentially degraded display capability	None
134	IOM Display Image Thread Overrun test	Internal	Non-fatal	Potentially degraded display capability	None
135	IOM Display Vertical Path Thread Overrun test	Internal	Non-fatal	Potentially degraded display capability	None
136	IOM IO Application Thread Overrun test	Internal	Non-fatal	Potentially degraded functionality associated with Alerts, A661, Control Panel I/O, Controls, AFDX payload processing.	None
137	IOM IO Thread Overrun test	Internal	Non-fatal	Potentially degraded functionality associated with soft program pins, source selection, A429 and discrete processing.	None
138	IOM EGPWS IO Thread Overrun test	Internal	Non-fatal	Potentially degraded functionality associated with IOM/EGPWS interface.	None
139	IOM Radar IO Thread Overrun test	Internal	Non-fatal	Potentially degraded functionality associated with IOM/WXR interface.	None

EFFECTIVITY

ALL

34-48-01Page 1103
1 Dec 2006

**COMPONENT MAINTENANCE MANUAL**

Part No. 965-1694-001

Table 1006. Fault List Summary (cont)

Fault Event Code	Test Name	Fault Type	Fault Category	AESS Consequences	Aircraft Consequences
140	IOM TCAS IO Thread Overrun test	Internal	Non-fatal	Potentially degraded functionality associated with IOM/TPL interface.	None
141	IOM AFDX Sample Port Thread Overrun test	Internal	Non-fatal	Potentially degraded functionality associated with AFDX input/output processing.	None
142	reserved				
143	IOM CMF Event Records Thread Overrun test	Internal	Non-fatal	Potentially degraded flight /history recording capability	None
144	IOM CORE BITE Internal Thread Overrun test	Internal	Non-fatal	Potentially degraded fault monitoring capability.	None
145	IOM CORE BITE Monitor Faults Thread Overrun test	Internal	Non-fatal	Potentially degraded fault monitoring capability.	None
146	IOM CORE BITE Dataload Thread Overrun test	Internal	Non-fatal	Potentially degraded fault monitoring capability.	None
147	IOM CMF Interactive Thread Overrun test	Internal	Non-fatal	Potentially degraded fault monitoring capability.	None
148	IOM CMF Collect Faults Thread Overrun test	Internal	Non-fatal	Potentially degraded fault monitoring capability.	None

 EFFECTIVITY _____
 ALL
34-48-01Page 1104
1 Dec 2006

**COMPONENT MAINTENANCE MANUAL**

Part No. 965-1694-001

Table 1006. Fault List Summary (cont)

Fault Event Code	Test Name	Fault Type	Fault Category	AESS Consequences	Aircraft Consequences
149	IOM WXR Comm Thread Overrun test	Internal	Non-fatal	Potentially degraded WXR/IOM communication	None
150	IOM TPL Comm Thread Overrun test	Internal	Non-fatal	Potentially degraded TPL/IOM communication	None
151	IOM EGPWS Comm Thread Overrun test	Internal	Non-fatal	Potentially degraded EGPWS/IOM communication	None
152	reserved				
153	IOM ADIS Configuration Modification Thread Overrun test	Internal	Non-fatal	Potentially degraded ADIS capability	None
154	IOM COMM BITE Internal Thread Overrun test	Internal	Non-fatal	Potentially degraded fault monitoring capability.	None
155	IOM ADIS Internal Parameter Access Thread Overrun test	Internal	Non-fatal	Potentially degraded ADIS capability	None
156	IOM COMM BITE Dataload Thread Overrun test	Internal	Non-fatal	Potentially degraded fault monitoring capability.	None
157-159	reserved				
160	IOM MonitorAppThreads thread loss-of-function (LOF) test	Internal	Fatal	Loss of fault monitoring capability.	None

EFFECTIVITY _____

ALL

34-48-01Page 1105
1 Dec 2006

**COMPONENT MAINTENANCE MANUAL**

Part No. 965-1694-001

Table 1006. Fault List Summary (cont)

Fault Event Code	Test Name	Fault Type	Fault Category	AESS Consequences	Aircraft Consequences
161	IOM/EGPWS Ethernet Interface Test during CMF Manual Test	Internal	Non-fatal	No data from EGPWS	Loss of EGPWS function for the AESU. No system impact since the EGPWS functionality is available from the alternate AESU.
162	IOM/TPL Ethernet Interface Test during CMF Manual Test	Internal	Non-fatal	No data from the TPL	Loss of TPL function for the AESU. No system impact since the TPL functionality is available from the alternate AESU.
163	IOM/WXR Ethernet Interface Test during CMF Manual Test	Internal	Non-fatal	No data from the WXR	Loss of WXR function for the AESU. No system impact since the WXR functionality is available from the alternate AESU.
164-201	reserved				
202	IOM TPL PSM No Power Input Test	System	Non-fatal	No Power from TPL PSM	Loss of TCAS and XPDR functions.
203	IOM WXR/TAWS PSM No Power Input Test	System	Non-fatal	No Power from WXR/TAWS PSM	Loss of WXR and EGPWS Functions.

EFFECTIVITY _____

ALL

34-48-01Page 1106
1 Dec 2006



COMPONENT MAINTENANCE MANUAL

Part No. 965-1694-001

Table 1006. Fault List Summary (cont)

Fault Event Code	Test Name	Fault Type	Fault Category	AESS Consequences	Aircraft Consequences
204	IOM Onside AESS CP ARINC 429 Input - No Data Test	System	Non-fatal	Loss of AESS CP Controls (Hard Controls) for Onside AESU	Cannot control Onside AESU via AESS CP. No loss of AESS functionality if soft controls are available via MFDs, otherwise, loss of all AESS functionality. No system impact since alternate AESU is available.
205	IOM AESS CP ARINC 429 Input - Invalid Data Test	System	Non-fatal	Loss of AESS CP Controls (Hard Controls)	Cannot control AESS via AESS CP. No loss of AESS functionality if soft controls are available via MFDs, otherwise, loss of all AESS functionality. No system impact since alternate AESU is available.
206	IOM RTU ARINC 429 Input - No Data Test	System	Non-fatal	Loss of WXR	Loss of all WXR functions for the AESU. No system impact since the WXR functionality is available from the alternate AESU.
207	Reserved				
208	IOM Onside RMP ARINC 429 Input - No Data Test	System	Non-fatal	Loss of Onside RMP ARINC interface	None if Offside RMP is available
209	IOM Onside RMP ARINC 429 Input - Invalid Data Test	External	Non-fatal	Loss of Onside RMP ARINC interface	None if Offside RMP is available

EFFECTIVITY

ALL

34-48-01

Page 1107
1 Dec 2006