

Host Unit Antenna Information

for

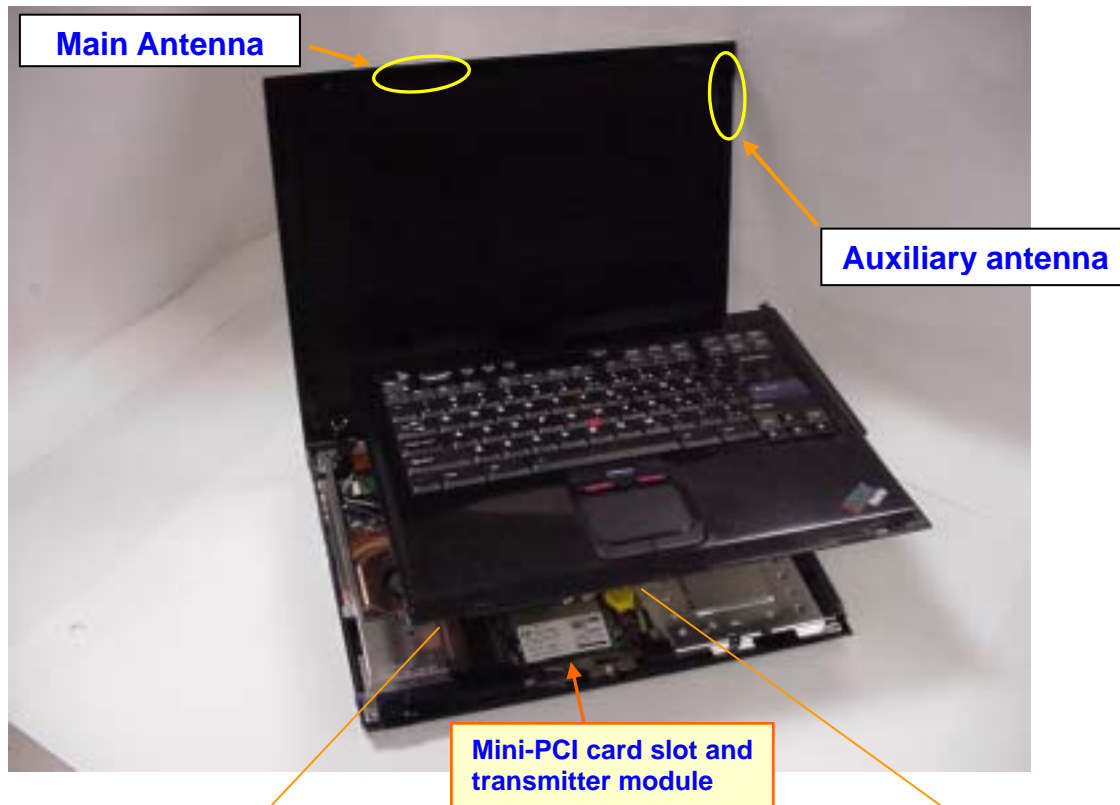
ThinkPad T40 Series

LCD 15 inch Model

1.	HOST PC INFORMATION	2
2.	HOST PC LABELING	4
3.1	TRANSMISSION ANTENNA ASSEMBLY OVERVIEW	5
3.2	ANTENNA PHOTOS.....	6

1. Host PC Information

The main antenna, meander type, is built in the top side of LCD and the auxiliary antenna, meander type, is built in the right side of LCD as shown in the Photo. Those diversity antennas are not used simultaneously. One of the antennas is selected automatically or manually to have a good quality of radio communication. The selected antenna performs transmission or receiving in half duplex alternatively



FCC ID and IC's Certification Number is visible when the keyboard assembly is removed.

IBM ThinkPad T40 Series, LCD 15 inch model



Front View



Rear View

2. Host PC Labeling

Manufactured by IBM United Kingdom Ltd.
Greenock Scotland, Made in U.K.

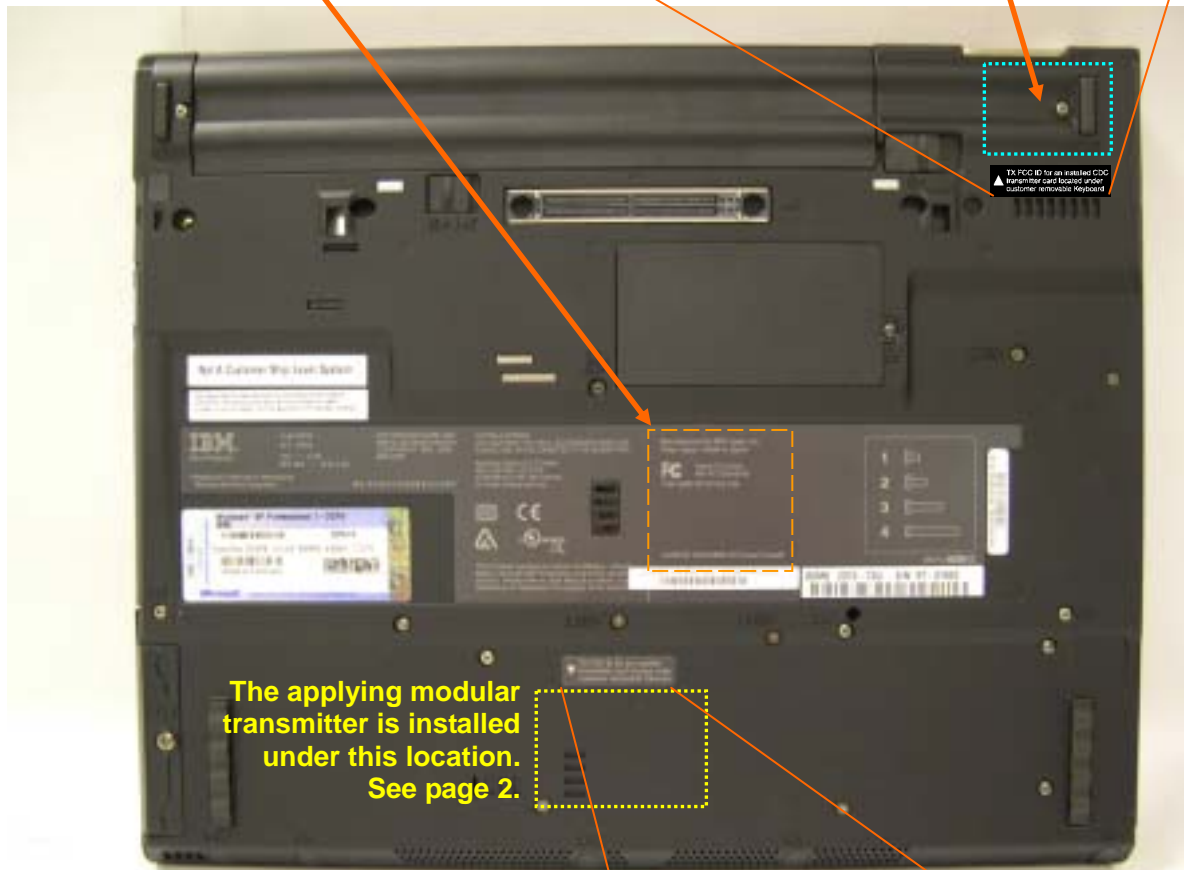
FC Tested To Comply
With FCC Standards
FOR HOME OR OFFICE USE

CANADA ICES/NMB-003 Class/ClasseB

The host device (ThinkPad T40 series, LCD 15 inch model) supports the applying transmitter and a built-in type Bluetooth LMA transmitter which is to be certified separately under Class II change with **FCC ID: ANO20020100MTN**



**TX FCC ID for an installed CDC
transmitter card located under
customer removable Keyboard**



**The applying modular
transmitter is installed
under this location.
See page 2.**



Bottom view, Front side

**TX FCC ID for an installed
transmitter card located under
customer removable Palmrest**

3. Antenna Specifications

3.1 Transmission antenna assembly overview

Designator	Manufacture	Antenna type	Cable type and length	Gain (dBi) Note 1)
91P6841 Main antenna	Hitachi Cable Ltd. (Japan)	Dual Band Meander Antenna	coax 755mm	2.4GHz band 1.24 dBi (peak)
				5.8GHz band 1.01 dBi (peak)
91P6840 Auxiliary antenna	Hitachi Cable Ltd. (Japan)	Dual Band Meander Antenna	coax 580mm	2.4GHz band 0.38 dBi (peak)
				5.8GHz band -0.23 dBi (peak)

Note 1):

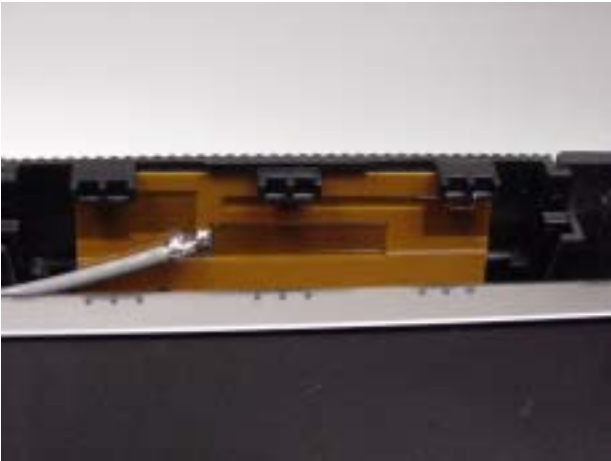
1a. Includes all cable losses.

1b. Antenna type should be Omni Directional and have gain of 3.0 dBi or less for IEEE802.11a(5GHz band) and have gain of 2.0 dBi or less for IEEE802.11b/g(2.4GHz band), regarding the IBM internal specification.

3.2 Antenna Photos

Antenna Locations

**Main antenna
Dual Band Meander**



**Auxiliary antenna
Dual Band Meander**



Exterior Photos of Antennas

Main antenna

Manufacturer: Hitachi Cable Ltd.
Parts Number: 91P6841
Dual Band Meander antenna
Cable : coax 755 mm

Auxiliary antenna

Manufacturer: Hitachi Cable Ltd.
Parts Number: 91P6840
Dual Band Meander antenna
Cable : coax 580 mm

