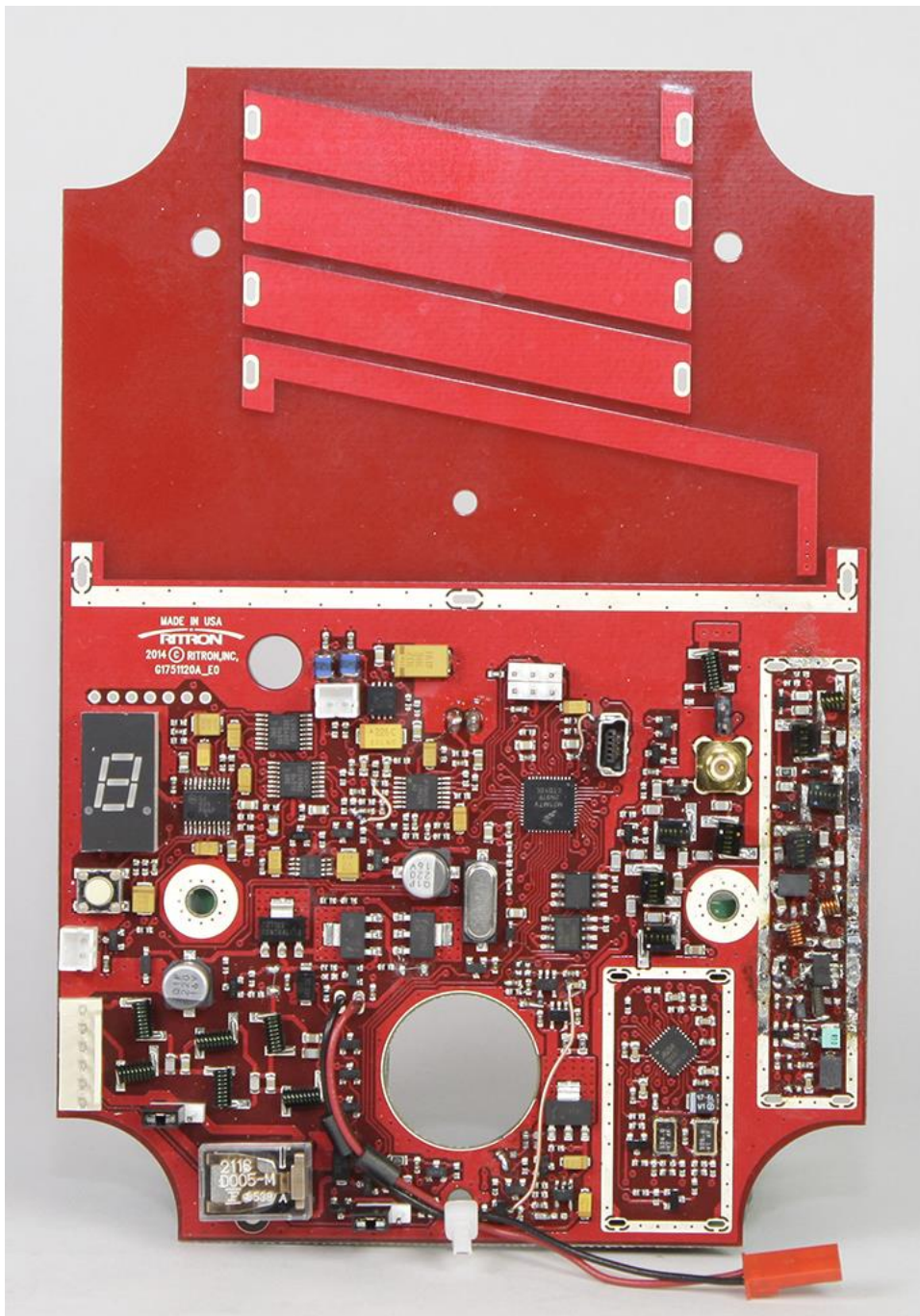


<b>TYPE OF EXHIBIT:</b>	INTERNAL PHOTOGRAPHS
<b>FCC PART:</b>	2.1033(c)(12)
<b>MANUFACTURER:</b>	RITRON, INC.
<b>MODELS:</b>	RQX-156, RQX-156-XT
<b>TYPE OF UNIT:</b>	VHF-FM Callbox 2-Way Radio
<b>FCC ID:</b>	AIERIT38-156
<b>DATE:</b>	August 18, 2014

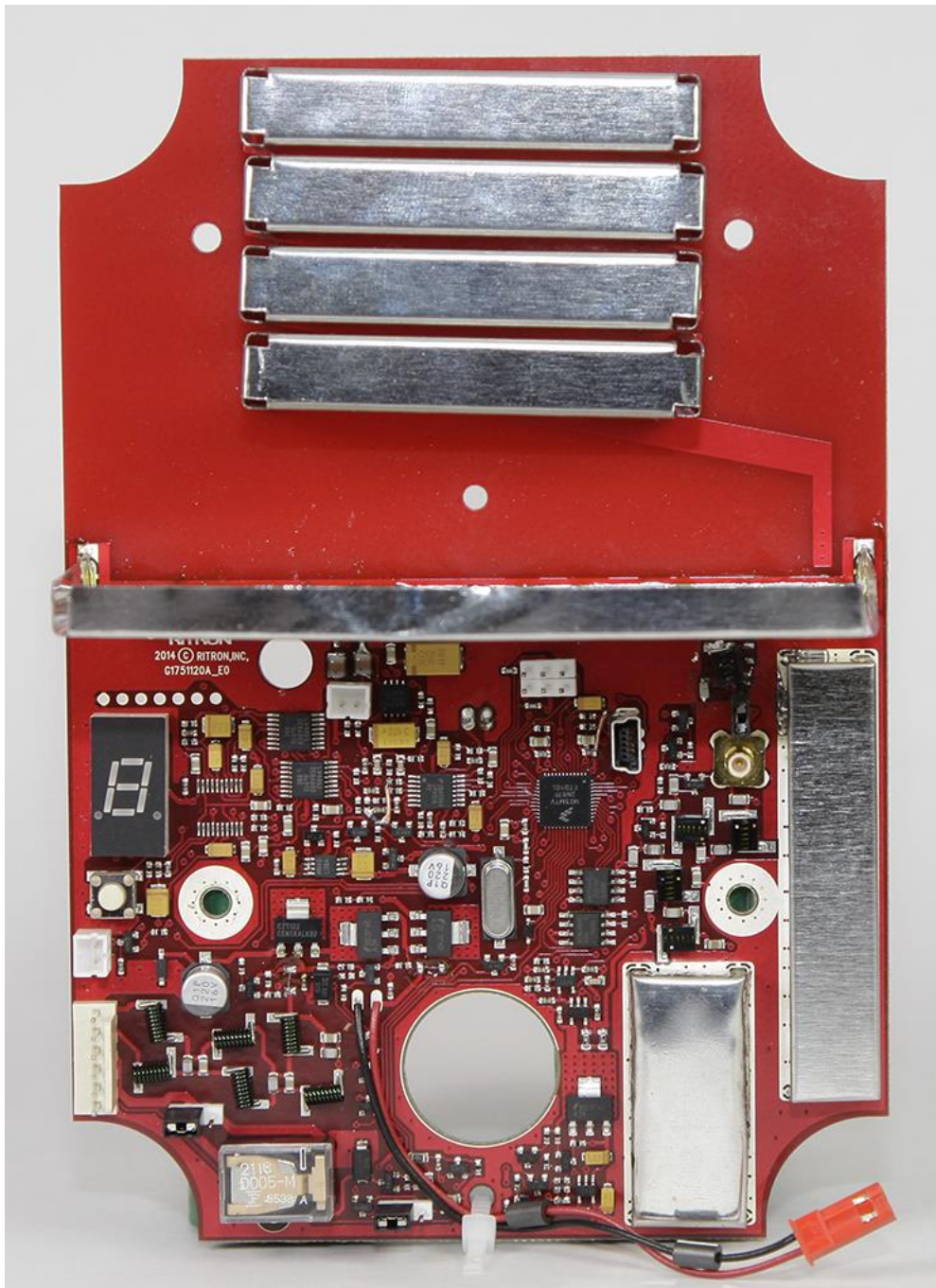
Included in this exhibit are photographs of the RITRON Model RQX-156 printed circuit board assembly and installation.

Additional photographs of the radio construction and layout, labels, and chassis assembly are included with this certification request as separate exhibits.

**SIGNED:**   
Michael A. Pickard - Project Engineer



**EXHIBIT:** RQX-156 complete top side PCB assembly with shields and internal antenna removed  
**FCC ID:** AIERIT38-156



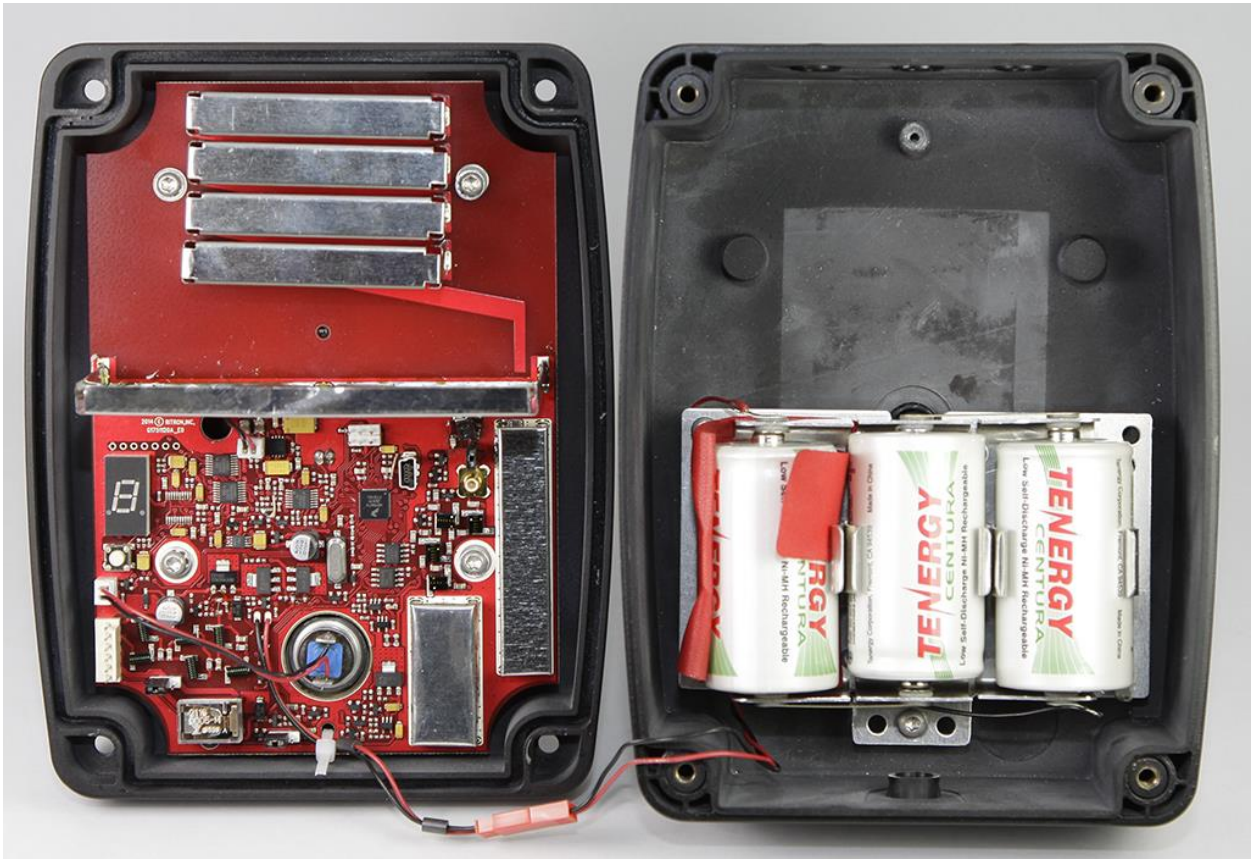
**EXHIBIT:** RQX-156 complete top side PCB assembly with shields and internal antenna installed  
**FCC ID:** AIERIT38-156



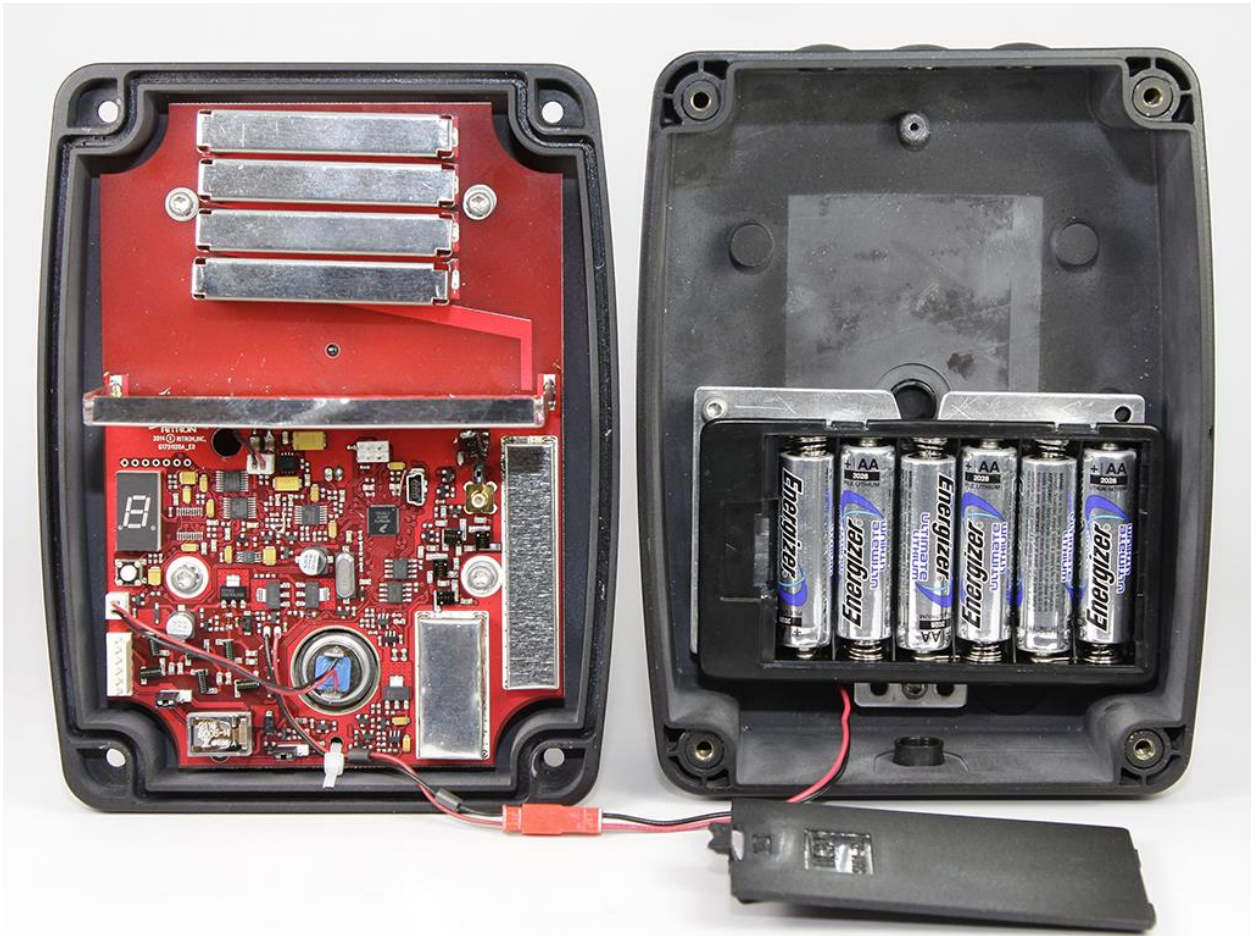


**EXHIBIT:** RQX-156 complete bottom side PCB assembly

**FCC ID:** AIERIT38-156

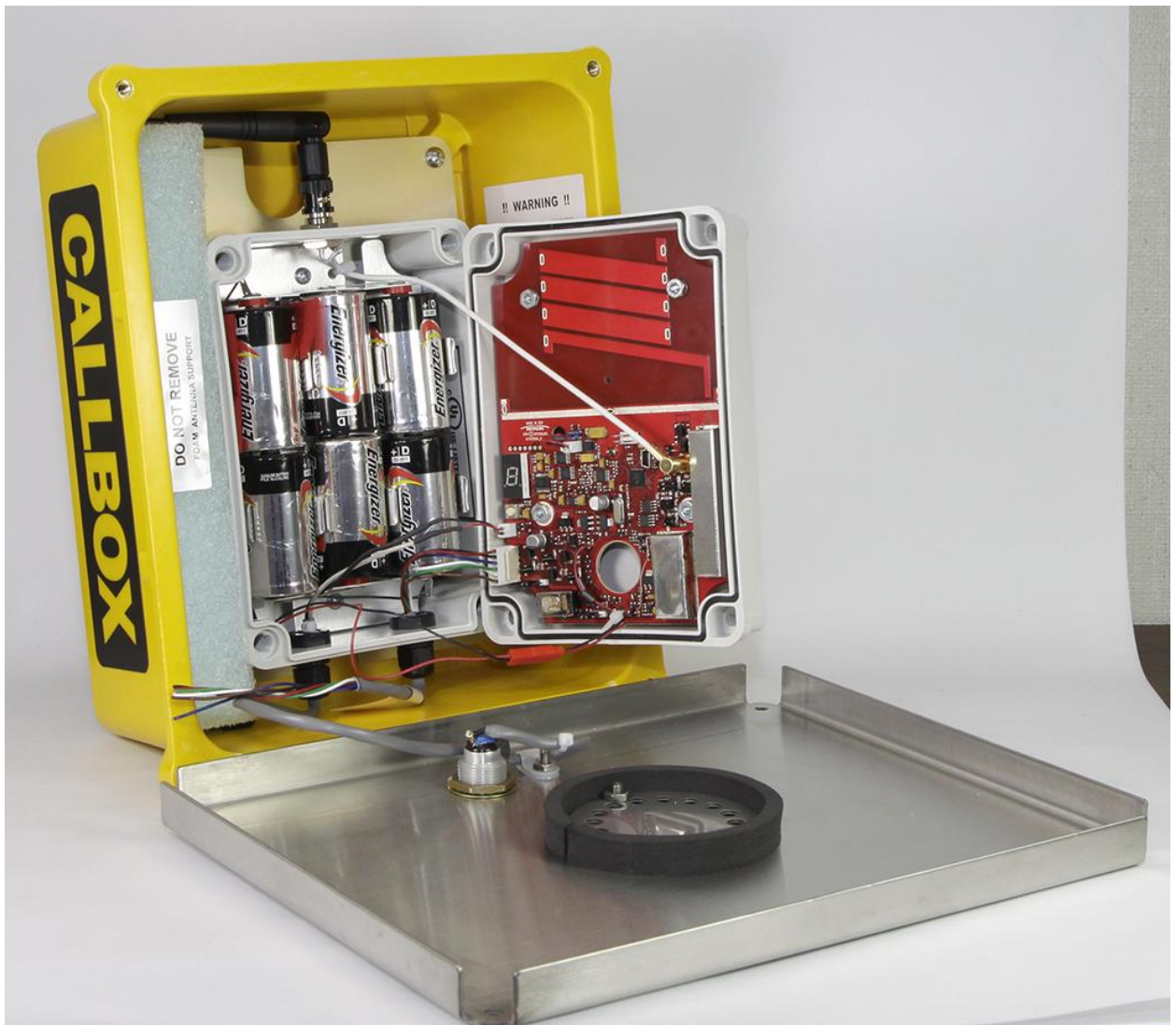


**EXHIBIT:** RQX-156 with 3 D-cell batteries. Case open to show printed circuit board installation  
**FCC ID:** AIERIT38-156



**EXHIBIT:** RQX-156 with 6 AA-cell batteries. Case open to show printed circuit board installation  
**FCC ID:** AIERIT38-156





**EXHIBIT:** RQX-156-XT with 6 D-cell batteries. Case open to show printed circuit board installation  
**FCC ID:** AIERIT38-156