

# USER MANUAL



## BLUETOOTH SPEAKER

### Features

Thank you for purchasing the Jammerz Music Box Bluetooth speaker system. Please read this carefully before operation and keep it for future reference.

#### Package contents

- CSBT11 Blue tooth speaker unit
- Micro USB to USB charging cable
- User Manual

#### Features

- Built-in Bluetooth speaker
- Speaker Phone Function
- DC battery power: built-in rechargeable lithium ion
- Wireless range: 33 feet
- Supports Bluetooth v2.1 and Enhanced Data Rate

### Precaution

#### Safety Information

##### Important Safety Instructions

1. Read these instructions.
2. Keep these instructions.
3. Heed all warnings.
4. Follow all instructions.
5. Do not use this apparatus near water.
6. Clean only with a dry cloth.
7. Do not block any ventilation openings. Install in accordance with the manufacturer's instructions.
8. Do not install near any heat sources such as radiators, heat registers, stoves or other apparatus (including amplifiers) that produce heat.
9. Do not defeat the safety purpose of the polarized or grounding-type plug. A polarized plug has two blades with one wider than the other. A grounding-type plug has two blades and a third grounding prong. The wide blade or the third prong is provided for your safety. If the provided plug does not fit into your outlet, consult an electrician for replacement of the obsolete outlet.
10. Protect the power cord from being walked on or pinched, particularly at plugs, convenience receptacles and the point where they exit from the apparatus.
11. Only use attachments/accessories specified by the manufacturer.
12. Use only with the cart, stand, tripod, bracket or table specified by the manufacturer or sold with the apparatus. When a cart is used, use caution when moving the cart/apparatus combination to avoid injury from tip-over.
13. Unplug this apparatus during lightning storms or when unused for long periods of time.
14. Refer all servicing to qualified service personnel. Servicing is required when the apparatus has been damaged in any way, such as power supply cord or plug is damaged, liquid has been spilled or objects have fallen into the apparatus, the apparatus has been exposed to rain or moisture, does not operate normally, or has been dropped.
15. Do not expose this apparatus to dripping or splashing and ensure that no objects filled with liquids, such as vases, are placed on the apparatus.
16. To completely disconnect this apparatus from the AC Mains, disconnect the power supply cord plug from the AC receptacle.
17. The mains plug of the power supply cord shall remain readily operable.
18. Do not expose batteries to excessive heat such as sunshine, fire or the like.

### Warnings and Precautions

- WARNING: To prevent fire or shock hazards, do not expose this unit to rain or moisture.
- WARNING: Do not place the unit on top of any soft, porous, or sensitive surfaces to avoid damaging the surface. Use a protective barrier between the unit and surface to protect the surface.
- WARNING: Where the mains plug or appliance coupler is used as the disconnect device, such disconnect device shall remain readily operable.
- Note: This device uses an internal rechargeable lithium-ion battery that should last the lifetime of the device. If you suspect your battery may be dead after several attempts to charge, please contact COBY for support.
- Never disassemble the unit or attempt to remove the battery as that could cause leakage of an electrolytic substance.

### FCCWarnings

WARNING: Changes or modifications to this unit not expressly approved by the party responsible for compliance could void the user's authority to operate the equipment.

NOTE: This equipment has been tested and found to comply with the limits for a Class B digital device,

pursuant to Part 15 of the FCC Rules. These limits are designed to provide reasonable protection against harmful interference in a residential installation. This equipment generates, uses, and can radiate radio frequency energy and, if not installed and used in accordance with the instructions, may cause harmful interference to radio communications. However, there is no guarantee that interference will not occur in a particular installation. If this equipment does cause harmful interference to radio or television reception, which can be determined by turning the equipment off and on, the user is encouraged to try to correct the interference by one or more of the following measures:

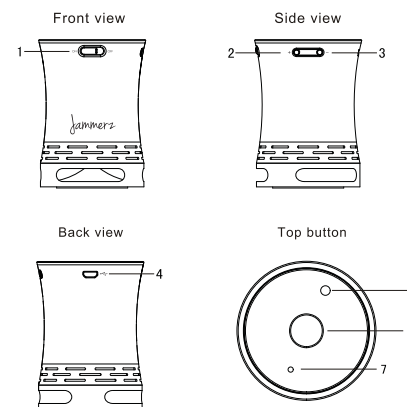
- Reorient or relocate the receiving antenna.
- Increase the separation between the equipment and receiver.
- Connect the equipment into an outlet on a circuit different from that to which the receiver is connected.
- Consult the dealer or an experienced radio/TV technician for help.

The Bluetooth word mark and logos are owned by the Bluetooth SIG, Inc. and any use of such marks is under license.

### RF warning statement:

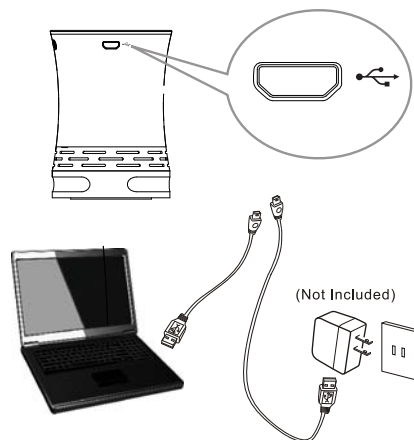
The device has been evaluated to meet general RF exposure requirement. The device can be used in portable exposure condition without restriction.

### Over view of the unit



1. Power On/Off
2. Volume+/Next Track
3. Volume-/Previous Track
4. DC 5V IN
5. Bluetooth Indicator/Charging Indicator
6. Play/Pause/Hands Free
7. Microphone

### Charging the unit



● It is better to switch off the unit before charging. The charging-indicator changing from red to light off indicates that the battery has been fully charged.

-10-

### Volume+/Next Track

● When the player is in working mode, long press to turn up the volume. short press to next Track when playing the music.  
● You will hear a beeping sound when you turn up to the maximum volume or minimum volume.

### Volume-/Previous Track

When the player is in working mode, long press to turn down the volume. short press to previous Track when playing the music.

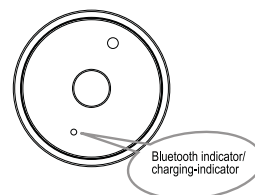
### Play/Pause/Hands Free

When the player is in working mode.  
● Press to temporarily pause a playback; press it again to resume the playback.  
● Press this button to answer the phone call in hands free when there is a phone call in  
● Press this button to end the call when during a call.

-11-

### Indicator

● When the blue indicator light is flashing, the player is searching for a signal.  
● The blue indicator will flash once every 3 seconds when a player is connected, if the device is not in the area of the paired unit. The CSBT11 will return back to searching status mode. If there is no device to pair with the unit, it will go into sleep mode after 2 minutes  
● The blue indicator keeps flashing once per 3 seconds means bluetooth was connected, and the model of the player will show on mobile phone.  
● There is a multicolor LED indicator in the speaker, the blue indicator for the bluetooth mode, the red LED indicator for charging mode.

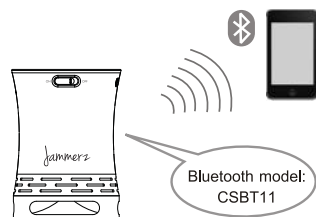


-12-

### Pairing a Bluetooth Device

**1. Turn on the unit and the Pairing Indicator light will flash blue quickly.** When pairing, remain within 3 feet of the unit.  
**2. Using the native controls on your Bluetooth device (exp: Smartphone/ Computer/MP3 Player), select the "CSBT11" in your Bluetooth settings to pair.** If your device requests a password, enter the default password "0000". Refer to the user's manual for your specific device for instructions on pairing and connecting Bluetooth devices.  
**3. When successfully paired and connected, the Pairing Indicator will display a solid blue light and a beep will sound from the unit.** (As for the compatibility problem, if connection for the first time is not successful, pls cancel the memorized Bluetooth device in music source, and connect again.)  
**Note: 1. connection will be done automatically after the first connection**  
**2. Keep only 1 pcs of "CSBT11" working at Bluetooth function to avoid any disturb.**

-13-



### Playing Audio Wirelessly

1. Follow the instructions for Pairing a Bluetooth Device.  
2. Use the native controls on the connected Bluetooth device to select a track.  
3. To play the selected track, use the native controls on the connected Bluetooth device or the unit to play/pause.  
4. Audio played through the connected Bluetooth device will now be heard through the speaker.  
5. Use the native controls on the connected Bluetooth device or unit to adjust the volume.

-14-

### Troubleshooting & Support

If you have a problem with this device, please read the troubleshooting guide below and check our website at [www.cobyusa.com](http://www.cobyusa.com) for Frequently Asked Questions (FAQs) and firmware updates. If these resources do not resolve the problem, please contact Technical Support.

Address  
COBY Electronics Corporation  
Technical Support  
150 Knowlton Way  
Savannah, GA 31407

Web  
[www.cobyusa.com](http://www.cobyusa.com)

Phone: 800-727-3592:  
Weekdays: 8:30AM-9:00PM EST  
Saturdays: 9:00AM-5:30PM EST

#### I cannot turn the unit on.

● Ensure that the Li-battery of speaker unit is fully charged thru a USB cable connect to an AC power or PC (PC must not be in sleep mode).

#### The device will not pair with the unit.

● Check if the speaker is connected with other music source  
● Ensure that there is only one working unit with bluetooth function on.

-15-

#### The sound is distorted.

Ensure that all connections are secure.  
● Try reducing the volume level.  
● If your device supports it, try reducing the bass level.

-16-

### Specifications:

Power supply	DC - 5V
Power consumption	1.8W
Speakers max output	1W
Driver unit	1.5"4Ω
S/N Ratio	≥60dB
Frequency response	80Hz-20KHz
Battery capacity	600mAh
Product weight	140g
Product Dimension	63.5*91.1*65.7mm

-17-