

SMART REMOTE

Quick User Guide HA001



Notice: The batteries come with the controller are just for temporary use purpose and won't last long. Please change to regular batteries for normal use as soon as possible



Mouse Left

Mouse Right

Power
ON/OFF

Mouse
scroll

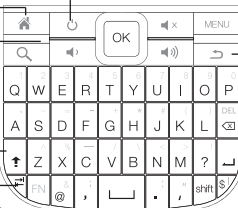
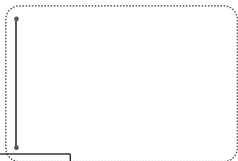
Power

Home

Power Light
Search

Caps
Lock

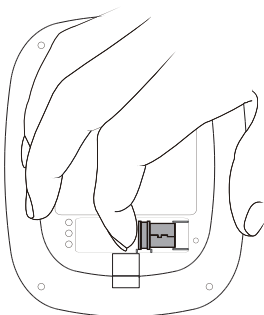
Tab



Back

Step1

Unlock the battery storage cover at the back of the controller, take out the wireless USB receiver, and plug it into the USB slot of Mini PC or other smart devices such as the PC or tablet.



Open the battery cover, right into the battery, Smart remote and receiver connections use

Step2

Turn the power switch of the controller to the "ON" position. The red led light flashes, indicating the controller go active.



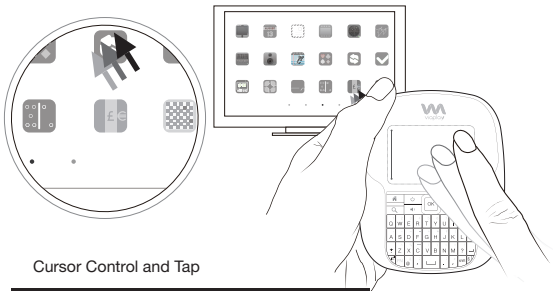
light flashes



Step3 As below illustrates the working zone of touch panel, as well as the operation instructions.

Mouse Control and Tap

Use one finger to move on the touch panel, to control the movement of the cursor on the displayed screen accordingly. Move the cursor to the targeted object on the screen, single tap on the touch panel to make the execution.



Cursor Control and Tap

Gesture Control: Zoom in / Zoom out

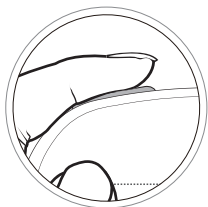
(This feature is limited to specific modes)

Use two fingers moving on the surface of the touch panel for zooming. Applicable applications include web page browsing, picture viewing, or games like Angry Birds.

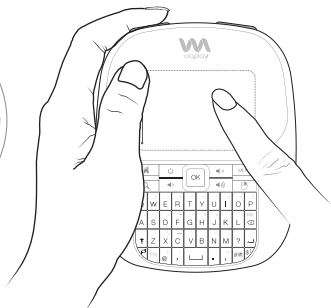


Gesture Control: Scroll / Drag / Stroke

Such controls must be achieved with coordination of holding the "Mouse Left" key. By holding the "Mouse Left" key, the single finger movement on the touch area does not perform the cursor control any more, corresponding gesture controls with respect to different applications. For examples, scroll control under web page viewing, moving and icon to different location, dragging a bird when playing Angry Birds, or performing stroke function when playing the Fruit Ninja game.



Mouse Left

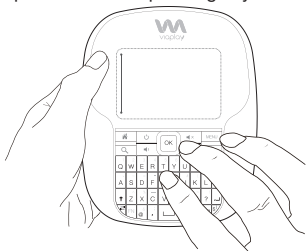


Keyboard input

If you need to input an upper number or symbol on the keyboard, please long press the corresponding key for around 0.8 seconds. Or hold "FN" key, then press the corresponding key at the same time.



FN key



Troubleshooting

Troubles	Causes Analysis	Solutions
If your Smart remote does not respond	The remote might go into standby mode	Press any button on the remote to wake it up.
	The remote stop working	Restart the remote
	The 2.4G signal lost	Repair the 2.4G USB dongle with the controller (follow the instruction on page one).
Pointer doesn't move smoothly	Low battery	Change the batteries
	The 2.4G signal is interfered	Move the usb 2.4G dongle away from Wi-Fi
	The 2.4G signal is block by TV frame	Use the USB extension cable. Don't let the USB dongle be block by TV frame.
Zoom in/out function doesn't work	The remote use with an unpaired device.	The zoom in/out function needs driver, only work in the paired TV dongle.
HOME/SEARCH/ MENU/ POWER/ BACK keys doesn't work	The devices might not use the standard HID key code or don't have such keys.	Use the remote with a device with standard HID key value.

Product Specifications

System Requirements	Window/Mac/Android 2.3 or above	Battery	AAA batteries x 3
Control Method	Multi-touch Control	Demensions	110mm x 88mm x 20 mm
Wireless Connection	2.4GHz	New Weight	90.6g with Li-ion battery
Power Consumptions	Working: 4.5V/25mA; Sleeping: 4.5V/0.4mA		

FCC Certification Requirements

Caution: Any changes or modifications in construction of this device which are not expressly approved by the party responsible for compliance could void the user's authority to operate the equipment.

This device complies with part 15 of the FCC Rules. Operation is subject to the following two conditions: (1) This device may not cause harmful interference, and
(2) This device must accept any interference received, including interference that may cause undesired operation.

The manufacturer is not responsible for any radio or TV interference caused by unauthorized modifications to this equipment. Such modifications could void the user's authority to operate the equipment.

This equipment has been tested and found to comply with the limits for a Class B digital device, pursuant to Part 15 of the FCC Rules. These limits are designed to provide reasonable protection against harmful interference in a residential installation. This equipment generates, uses and can radiate radio frequency energy and, if not installed and used in accordance with the instructions, may cause harmful interference to radio communications. However, there is no guarantee that interference will not occur in a particular installation. If this equipment does cause harmful interference to radio or television reception, which can be determined by turning the equipment off and on, the user is encouraged to try to correct the interference by one or more of the following measures:

- Reorient or relocate the receiving antenna.
- Increase the separation between the equipment and receiver.
- Connect the equipment into an outlet on a circuit different from that to which the receiver is connected.
- Consult the dealer or an experienced radio/TV technician for help.