



**World Standardization Certification & Testing CO., LTD**  
**World Standardization Safety and EMC Testing Centre**

## **FCC ID TEST REPORT**

for

**Smart Controller**

**MODEL: JS-B001, JS-B002, JS-B003, JS-B004, JS-B005, JS-B006, JS-B007,  
JS-B008, JS-B009**

**Trade Mark: N/A**

**FCC ID: ADNJS-B001**

**Test Report Number: WSCT11120844E**

**Issued Date: December 30, 2011**

Issued for

**SHENZHEN J&S TECHNOLOGY & DEVELOPMENT CO., LTD**  
**Unit 806, Tower A, Skyworth bldg., Gaoxin South 1st Ave., Shenzhen,  
Guangdong, China**

Issued By:

**WORLD STANDARDIZATION CERTIFICATION & TESTING CO., LTD.**

**Building A, Baoshi Road, Baoshi Science & Technology Park,  
Bao'an District, Shenzhen, Guangdong, China**

**TEL: +86-755-26996192**

**FAX: +86-755-26996253**



**Note:** This report shall not be reproduced except in full, without the written approval of World Standardization Certification & Testing CO., LTD. This document may be altered or revised by World Standardization Certification & Testing CO., LTD. personnel only, and shall be noted in the revision section of the document. The test results in the report only apply to the tested sample.



Report reference No.: WSCT11120844E

Issued: December 30, 2011

Revised: None

### Revision History Of Report

Rev.	Issue No.	Revisions	Effect Page	Revised By
00	WSCT11120844E	Initial Issue	ALL	Kallen Wang



Report reference No.: WSCT11120844E  
Issued: December 30, 2011  
Revised: None

## TABLE OF CONTENTS

<b>1</b>	<b>TEST CERTIFICATION.....</b>	<b>4</b>
<b>2</b>	<b>TEST RESULT SUMMARY .....</b>	<b>5</b>
<b>3</b>	<b>EUT DESCRIPTION.....</b>	<b>6</b>
<b>4</b>	<b>TEST METHODOLOGY .....</b>	<b>7</b>
	4.1. DECISION OF FINAL TEST MODE.....	7
	4.2. EUT SYSTEM OPERATION.....	7
<b>5</b>	<b>SETUP OF EQUIPMENT UNDER TEST.....</b>	<b>8</b>
	5.1. DESCRIPTION OF SUPPORT UNITS .....	8
	5.2. CONFIGURATION OF SYSTEM UNDER TEST .....	8
<b>6</b>	<b>FACILITIES AND ACCREDITATIONS .....</b>	<b>9</b>
	6.1. FACILITIES.....	9
	6.2. ACCREDITATIONS .....	9
	6.3. MEASUREMENT UNCERTAINTY.....	9
<b>7</b>	<b>TEST REQUIREMENTS.....</b>	<b>10</b>
	7.1. CONDUCTED EMISSION MEASUREMENT.....	10
	7.2. Radiation Emission Test .....	14
	7.3. Band edge test.....	21
<b>8.</b>	<b>Antenna requirement .....</b>	<b>24</b>
<b>9</b>	<b>PHOTOGRAPHS OF THE TEST CONFIGURATION .....</b>	<b>25</b>
<b>10</b>	<b>PHOTOGRAPHS OF EUT .....</b>	<b>27</b>





Report reference No.: WSCT11120844E

Issued: December 30, 2011

Revised: None

## 1 TEST CERTIFICATION

**Product:** Smart Controller

**Model:** JS-B001, JS-B002, JS-B003, JS-B004, JS-B005, JS-B006, JS-B007, JS-B008, JS-B009

**Trade Mark** N/A

**Applicant:** SHENZHEN J&S TECHNOLOGY & DEVELOPMENT CO., LTD  
Unit 806, Tower A, Skyworth bldg., Gaoxin South 1st Ave., Shenzhen, Guangdong, China

**Factory:** SHENZHEN J&S TECHNOLOGY & DEVELOPMENT CO., LTD  
Unit 806, Tower A, Skyworth bldg., Gaoxin South 1st Ave., Shenzhen, Guangdong, China

**Tested:** December 26 ~ December 30, 2011

**Test Voltage:** AC 120V/60Hz

**Applicable Standards:** FCC Part 15 Subpart C: 2010  
ANSI C63.4:2003

The above equipment has been tested by World Standardization Certification & Testing Co., Ltd., and found compliance with the requirements set forth in the technical standards mentioned above. The results of testing in this report apply only to the product/system, which was tested. Other similar equipment will not necessarily produce the same results due to production tolerance and measurement uncertainties.

**Tested By:** Jack Ma  
(Jack Ma)

**Date:** 2011.12.30

**Check By:** Mike mo  
(Mike mo)

**Date:** 2011.12.30

**Approved By:** Kallen Wang  
(Kallen Wang)

**Date:** 2011.12.30





Report reference No.: WSCT11120844E  
Issued: December 30, 2011  
Revised: None

## 2 TEST RESULT SUMMARY

Standard	Item	Result
FCC Part 15 Subpart C: Clause 15.249	Conducted emission Test	PASS
	Radiation Emission Test	PASS
	Band Edge Test	PASS

**Note:** 1. The test result judgment is decided by the limit of test standard  
2. The information of measurement uncertainty is available upon the customer's request.



Report reference No.: WSCT11120844E  
Issued: December 30, 2011  
Revised: None

### 3 EUT DESCRIPTION

Product	Smart Controller
Trade Mark	N/A
Model	JS-B001, JS-B002, JS-B003, JS-B004, JS-B005, JS-B006, JS-B007, JS-B008, JS-B009
Applicant	SHENZHEN J&S TECHNOLOGY & DEVELOPMENT CO., LTD
Serial Number	N/A
Antenna Type	PCB Antenna
EUT Power Rating	DC 3.7V By lithium battery
Temperature Range(Operating)	-10 ~ +50℃
Operating Frequency	2402MHz ~ 2480MHz
Number of Channels	79 Channels
USB Line	0.8m, Unshielded

Note: N/A stand for no applicable.

#### Models difference

No.	Model Number	Voltage	Tested With
1	JS-B001	DC 3.7V	<input checked="" type="checkbox"/>
2	JS-B002	DC 3.7V	<input type="checkbox"/>
3	JS-B003	DC 3.7V	<input type="checkbox"/>
4	JS-B004	DC 3.7V	<input type="checkbox"/>
5	JS-B005	DC 3.7V	<input type="checkbox"/>
6	JS-B006	DC 3.7V	<input type="checkbox"/>
7	JS-B007	DC 3.7V	<input type="checkbox"/>
8	JS-B008	DC 3.7V	<input type="checkbox"/>
9	JS-B009	DC 3.7V	<input type="checkbox"/>

NOTE: JS-B001 is tested model, other models are derivative models, The models are identical in circuit and PCB layout, only different on the model names, So the test data of JS-B001 can represent the remaining models.

## 4 TEST METHODOLOGY

### 4.1. DECISION OF FINAL TEST MODE

The EUT was tested together with the below additional components, and configuration, which produced the worst emission levels, was selected and recorded in this report.

The measurement was performed at 3 axis for lie orientation, side orientation and stand orientation. The lie orientation is the worst mode, so only the worst mode test data was reported.

The following test mode was recorder in this report.

Test item	Test mode
Conducted emission Test	Charging & Transmitting
Radiation Emission Test	CH1, CH40, CH79
Band Edge Test	CH1, CH79,

### 4.2. EUT SYSTEM OPERATION

1. Set up EUT with the support equipments.
2. Make sure the EUT transmitting continuously during the test.



Report reference No.: WSCT11120844E  
Issued: December 30, 2011  
Revised: None

## 5 SETUP OF EQUIPMENT UNDER TEST

### 5.1. DESCRIPTION OF SUPPORT UNITS

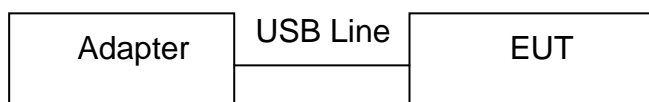
The EUT has been tested as an independent unit together with other necessary accessories or support units. The following support units or accessories were used to form a representative test configuration during the tests.

Manufacturer	Description	Model	Serial Number	FCC

**Note:**

- 1) All the equipment/cables were placed in the worst-case configuration to maximize the emission during the test.
- 2) Grounding was established in accordance with the manufacturer's requirements and conditions for the intended use.

### 5.2. CONFIGURATION OF SYSTEM UNDER TEST





## 6 FACILITIES AND ACCREDITATIONS

### 6.1. FACILITIES

All measurement facilities used to collect the measurement data are located at

**World Standardization Certification & Testing CO., LTD.**

**Building A, Baoshi Road, Baoshi Science & Technology Park, Bao'an District, Shenzhen, Guangdong, China**

The sites are constructed in conformance with the requirements of ANSI C63.4 and CISPR Publication 22. All receiving equipment conforms to CISPR Publication 16-1, "Radio Interference Measuring Apparatus and Measurement Methods."

### 6.2. ACCREDITATIONS

Our laboratories are accredited and approved by the following approval agencies according to ISO/IEC 17025.

<b>USA</b>	<b>FCC</b> (The certificate registration number is 131628)
	<b>TIMCO</b> (The certificate registration number is Q2001)
<b>Germany</b>	TUV Rheinland
<b>Canada</b>	<b>INDUSTRY CANADA</b>
	(The certificated registration number is 7700A-1)
<b>China</b>	<b>CNAS</b> (The certificated registration number is L3732)

Copies of granted accreditation certificates are available for downloading from our web site, <http://www.wsct.org.cn>

### 6.3. MEASUREMENT UNCERTAINTY

Where relevant, the following measurement uncertainty levels have been estimated for tests performed on the EUT as specified in CISPR 16-4-2:

Measurement	Frequency		Uncertainty
Conducted emissions	9kHz~30MHz		+/- 3.59dB
Radiated emissions	Horizontal	30MHz ~ 200MHz	+/- 4.77dB
		200MHz ~1000MHz	+/- 4.93dB
	Vertical	30MHz ~ 200MHz	+/- 5.04dB
		200MHz ~1000MHz	+/- 4.93dB

This uncertainty represents an expanded uncertainty expressed at approximately the 95% confidence level using a coverage factor of k=2.



## 7 TEST REQUIREMENTS

### 7.1. CONDUCTED EMISSION MEASUREMENT

#### 7.1.1. LIMITS

FREQUENCY (MHz)	Class B (dBuV)	
	Quasi-peak	Average
0.15 - 0.5	66 - 56	56 - 46
0.50 - 5.0	56	46
5.0 - 30.0	60	50

**NOTE:**

- (1) The lower limit shall apply at the transition frequencies.
- (2) The limit decreases in line with the logarithm of the frequency in the range of 0.15 to 0.50 MHz.
- (3) All emanations from a class A/B digital device or system, including any network of conductors and apparatus connected thereto, shall not exceed the level of field strengths specified above.

#### 7.1.2. TEST INSTRUMENTS

Conducted Emission Test Site				
Name of Equipment	Manufacturer	Model	Serial Number	Calibration Due
EMI Test Receiver	R&S	ESCI	100005	09/24/2012
LISN	AFJ	LS16	16010222119	09/29/2012
LISN(EUT)	Mestec	AN3016	04/10040	09/28/2012

- NOTE:** 1. The calibration interval of the above test instruments is 12 months and the calibrations are traceable to international system unit (SI).  
2. N.C.R = No Calibration Request.

#### 7.1.3. TEST PROCEDURES

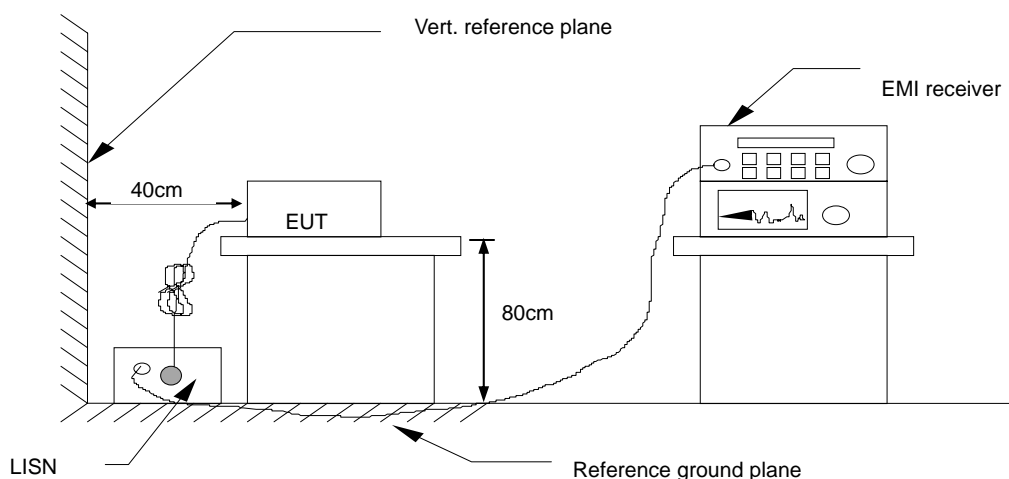
The EUT was put on a wooden table which was 0.8metre high above the ground and connected to the AC mains through a Artificial Mains Network (A.M.N). The mains lead in excess of 1 m separating the EUT from the AMN was folded back and forth parallel to the lead so as to form a bundle with a length of 0.3m to 0.4m. The EUT was kept 0.4m from any other earthed conducting surface. Both sides of AC line were checked to find out the maximum conducted emission levels according to the test procedure during conducted emission test.

The bandwidth of the test receiver (ESCI) was set at 9KHz.

The frequency range from 150 KHz to 30 MHz was investigated.

The test data of the worst-case condition(s) was recorded.

#### 7.1.4. TEST SETUP



For the actual test configuration, please refer to the related item – Photographs of the Test Configuration.

#### 7.1.5. Test Result

<b>Model No.</b>	JS-B001	<b>6dB Bandwidth</b>	120 KHz
<b>Environmental Conditions</b>	26°C, 60% RH	<b>Test Mode</b>	Charging & Transmitting
<b>Detector Function</b>	Peak / Quasi-peak/AV	<b>Test Result</b>	Pass
<b>Test By</b>	Jack Ma		

NOTE: 1. L1 = Line One (Live Line) / L2 = Line Two (Neutral Line).

2. “---” denotes the emission level was or more than 2dB below the Average limit, so no re-check anymore.

Freq. = Emission frequency in MHz

Reading level(dBuV) = Receiver reading

Corr. Factor (dB) = Attenuator Factor+ Cable loss

Level (dBuV) = Reading level(dBuV) + Corr. Factor (dB)

Limit (dBuV) = Limit stated in standard

Margin (dB) = Level (dBuV) – Limits (dBuV)

Q.P.=Quasi-Peak



Report reference No.: WSCT11120844E

Issued: December 30, 2011

Revised: None

Please refer to following diagram for individual

## Conducted Emission Measurement

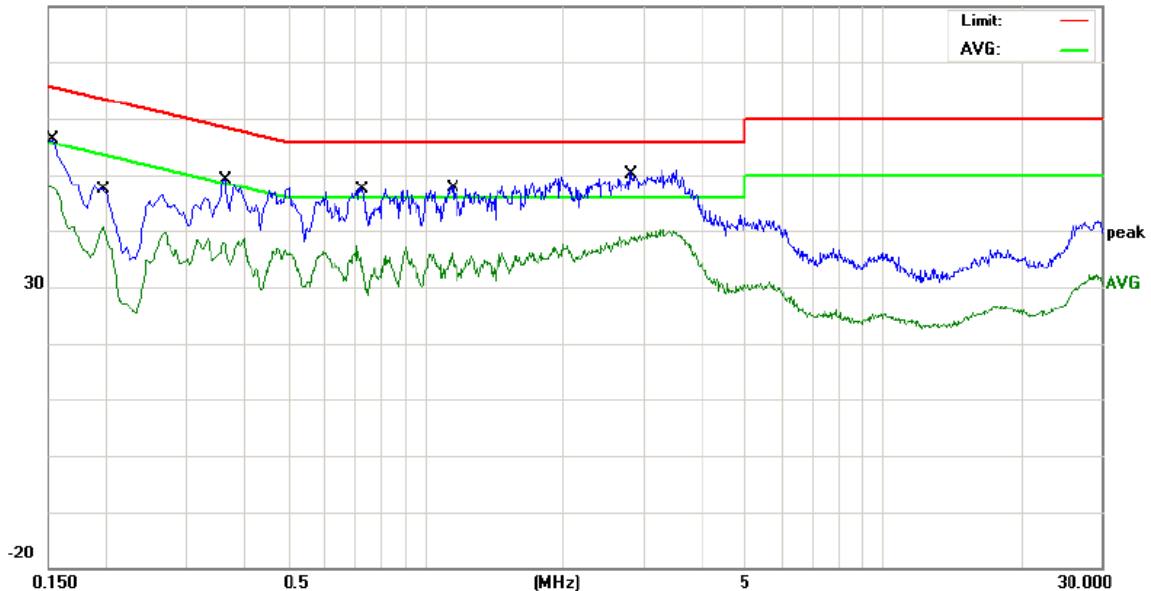
File :J&amp;S Technology

Data :#7

Date: 11/12/30/

Time: 8/54/06

80.0 dBuV



Site 843 Shielded Room

Limit: FCC Part15 B Conduction(QP)

EUT: Smart Controller

M/N: JS-B001

Mode: Charging &amp; Transmitting

Note:

Phase: L1

Power: AC 120V/60Hz

Temperature: 26

Humidity: 60 %

No.	Mk.	Freq. MHz	Reading Level dBuV	Correct Factor dB	Measure- ment dBuV	Limit dBuV	Over dB	Detector	Comment
1		0.1539	45.88	10.44	56.32	65.78	-9.46	QP	
2		0.1539	37.27	10.44	47.71	55.78	-8.07	AVG	
3		0.1965	37.00	10.31	47.31	63.75	-16.44	QP	
4		0.1965	29.70	10.31	40.01	53.75	-13.74	AVG	
5		0.3620	38.45	10.56	49.01	58.68	-9.67	QP	
6		0.3620	27.25	10.56	37.81	48.68	-10.87	AVG	
7		0.7260	36.22	10.80	47.02	56.00	-8.98	QP	
8		0.7260	22.84	10.80	33.64	46.00	-12.36	AVG	
9		1.1539	37.05	10.50	47.55	56.00	-8.45	QP	
10		1.1539	24.39	10.50	34.89	46.00	-11.11	AVG	
11	*	2.8300	39.62	10.55	50.17	56.00	-5.83	QP	
12		2.8300	28.34	10.55	38.89	46.00	-7.11	AVG	

\*:Maximum data x:Over limit l:over margin

(Reference Only)



Report reference No.: WSCT11120844E  
Issued: December 30, 2011  
Revised: None

### Conducted Emission Measurement

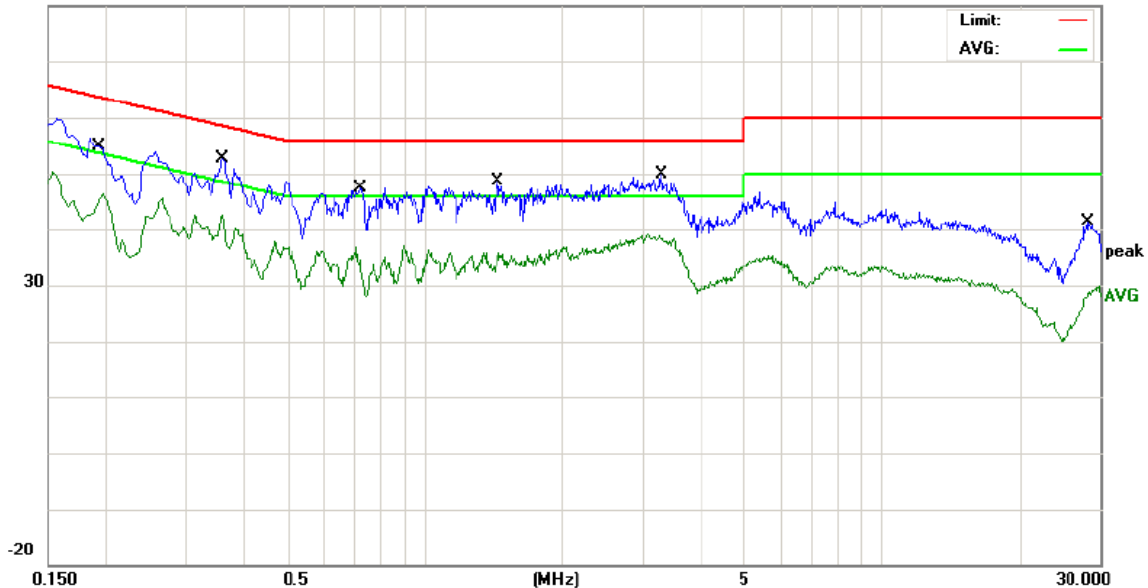
File :J&S Technology

Data :#8

Date: 11/12/30/

Time: 8/57/28

80.0 dBuV



Site 843 Shielded Room

Limit: FCC Part15 B Conduction(QP)

EUT: Smart Controller

M/N: JS-B001

Mode: Charging & Transmitting

Note:

Phase: N

Power: AC 120V/60Hz

Temperature: 26

Humidity: 60 %

No.	Mk.	Freq.	Reading	Correct	Measure-	Limit	Over		
		MHz	Level	Factor	ment			Detector	Comment
			dBuV	dB	dBuV	dBuV	dB		
1		0.1965	44.29	10.31	54.60	63.75	-9.15	QP	
2		0.1965	35.57	10.31	45.88	53.75	-7.87	AVG	
3	*	0.3620	42.19	10.56	52.75	58.68	-5.93	QP	
4		0.3620	32.04	10.56	42.60	48.68	-6.08	AVG	
5		0.7260	36.23	10.80	47.03	56.00	-8.97	QP	
6		0.7260	22.79	10.80	33.59	46.00	-12.41	AVG	
7		1.4420	38.03	10.51	48.54	56.00	-7.46	QP	
8		1.4420	24.89	10.51	35.40	46.00	-10.60	AVG	
9		3.3060	39.36	10.56	49.92	56.00	-6.08	QP	
10		3.3060	27.81	10.56	38.37	46.00	-7.63	AVG	
11		28.1380	30.05	10.58	40.63	60.00	-19.37	QP	
12		28.1380	17.37	10.58	27.95	50.00	-22.05	AVG	

\*:Maximum data x:Over limit l:over margin

(Reference Only)

## 7.2. Radiation Emission Test

### 7.2.1. Limits

According to 15.249 the field strength of emissions from intentional radiators operated under these frequencies bands shall not exceed the following:

Fundamental Frequency	Field Strength of Fundamental		Field Strength of Spurious	
	mV/meter	dBuV/meter	uV/meter	dBuV/meter
902-928MHz	50	94	500	54
2400-2483.5MHz	50	94	500	54
5725-5875MHz	50	94	500	54
24.0-24.25GHz	250	108	2500	68

The above field strength limits are specified at a distance of 3 meters. Emissions radiated outside of the specified bands, shall be according to the general radiated limits in 15.209 as following:

Frequencies (MHz)	Field strength uV/meter	Measurement distance (meters)
0.009-0.490	2400/F(kHz)	300
0.490-1.705	24000/F(kHz)	30
1.705-30.0	30	30
30-88	100	3
88-216	150	3
216-960	200	3
Above 960	500	3

As shown in 15.35(b), for frequencies above 1000MHz, the field strength limits are based on average detector, however, the peak field strength of any emission shall not exceed the maximum permitted average limits, specified above by more than 20dB under any condition of modulation.

#### Frequency Range of Radiated Measurement

According to 15.33(a), the intentional radiator operates below 10GHz, must be measured up to the tenth harmonic of the highest fundamental frequency or 40GHz, whichever is lower





Report reference No.: WSCT11120844E

Issued: December 30, 2011

Revised: None

## 7.2.2. TEST INSTRUMENT

966 Chamber				
Name of Equipment	Manufacturer	Model	Serial Number	Calibration Due
EMI Test Receiver	ROHDE&SCHWARZ	ESCI	100005	06/23/2012
Spectrum Analyzer	R&S	FSU	100114	04/14/2012
Pre Amplifier	H.P.	HP8447E	2945A02715	06/23/2012
Pre-Amplifier	Compliance	PAM0118	1360976	06/04/2012
Bilog Antenna	SUNOL Sciences	JB3	A021907	06/10/2012
Horn Antenna	Compliance	CE18000	001	06/10/2012
Cable	TIME MICROWAVE	LMR-400	N-TYPE04	06/09/2012
Cable	TIME MICROWAVE	--	--	06/09/2012
System-Controller	CCS	N/A	N/A	N.C.R
Turn Table	CCS	N/A	N/A	N.C.R
Antenna Tower	CCS	N/A	N/A	N.C.R

### 7.2.3. Test procedure

The EUT was placed on a turn table which was 0.8 meter above ground. The turn table can rotate 360 degrees to determine the position of the maximum emission level. The EUT was set 3 meters away from the receiving antenna which was mounted on a antenna tower. At the frequency band of 30MHz to 1GHz, The measuring antenna moved up and down to find out the maximum emission level. It moved from 1 to 4 m for horizontal and vertical polarizations. The broadband antenna (calibrated by dipole antenna) was used as a receiving antenna. At the frequency band of 1GHz to 25GHz, The measuring antenna moved from 1 to 4 m for horizontal and vertical polarization. The horn antenna was used as a receiving antenna.

The resolution bandwidth and video bandwidth of the test receiver was 120 KHz and 300KHz for Quasi-peak detection at frequency below 1GHz.

The resolution bandwidth and video bandwidth of the test receiver was 1MHz and 3MHz for Peak emission measurement above 1GHz .

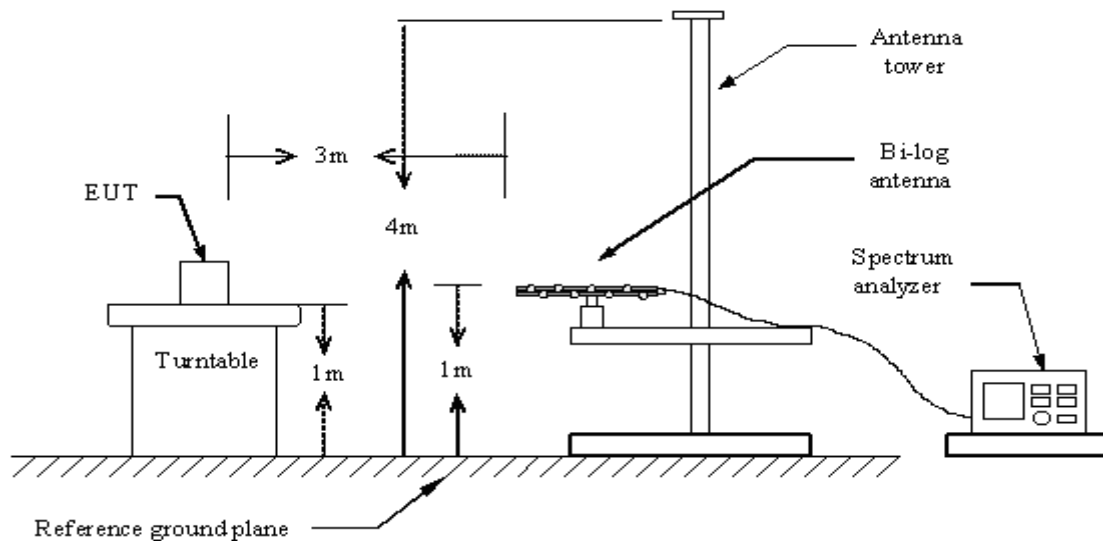
For Average emission above 1GHz, the resolution bandwidth and video bandwidth of the test receiver was 1MHz and 10Hz.

The EUT was tested in Chamber Site.

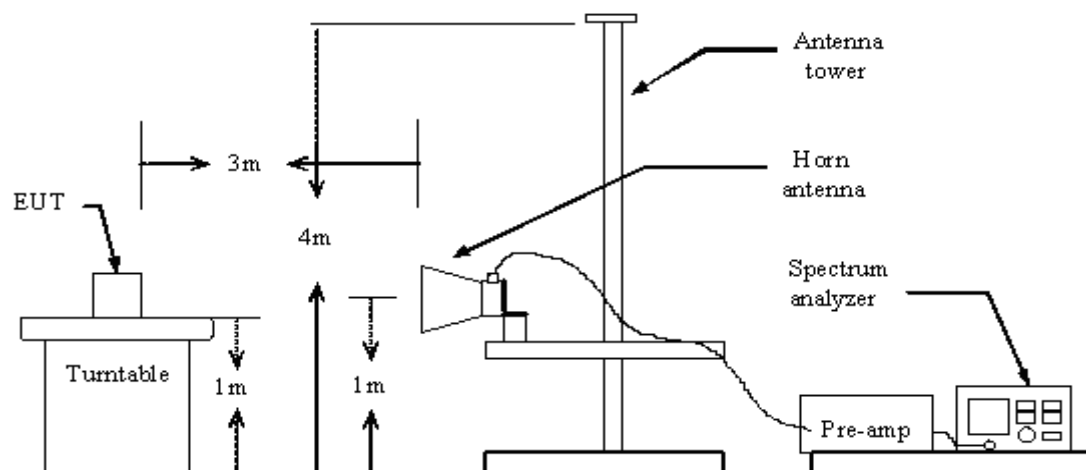
The test data of the worst case condition(s) was reported on the following pages.

## 7.2.4 Test setup diagram

### Below 1GHz



### Above 1GHz



## 7.2.5. Test Result

### A. Fundamental Radiated Emission Data

Product:	Smart Controller	Test mode:	CH Low~CH High
Test Item:	Fundamental Radiated Emission Data	Temperature:	25°C
Test Voltage:	AC 120V	Humidity:	56%RH
Test Result:	PASS		

#### CH Low

Freq. (MHz)	Emission(dBμ V/m) Peak Detector/ AV	HORIZ/ VERT	Limits(dBμ V/m) Peak/Average	Margin (dB)
2402.00	91.6/ 73.2	HORIZ	114/94	22.4/20.8
2402.00	94.6 / 76.7	VERT	114/94	19.4/17.3

#### CH Middle

Freq. (MHz)	Emission(dBμ V/m) Peak Detector/ AV	HORIZ/ VERT	Limits(dBμ V/m) Peak/ Average	Margin (dB)
2441.00	92.4/73.8	HORIZ	114/94	21.6/20.2
2441.00	93.6/74.2	VERT	114/94	20.4/19.8

#### CH High

Freq. (MHz)	Emission(dBμ V/m) Peak Detector/ AV	HORIZ/ VERT	Limits(dBμ V/m) Peak/ Average	Margin (dB)
2480.0	92.9/75.5	HORIZ	114/94	21.1/18.5
2480.0	94.3/77.0	VERT	114/94	19.7/17.0



Report reference No.: WSCT11120844E

Issued: December 30, 2011

Revised: None

**B. Harmonics Radiated Emission Data**

Product:	Smart Controller	Test mode:	CH Low~CH High
Test Item:	Radiated Emission Data	Temperature:	25°C
Test Voltage:	AC 120V	Humidity:	56%RH
Test Result:	PASS		

**CH Low**

Freq. (MHz)	Emission(dBuV/m) Peak Detector	HORIZ/ VERT	Limits(dBu V/m) Peak/ Average	Margin (dB)
4804.12	-	H/V	74.0/54.0	-
7206.18	-	H/V	74.0/54.0	-
9608.24	-	H/V	74.0/54.0	-
12010.3	-	H/V	74.0/54.0	-
14412.36	-	H/V	74.0/54.0	-
16814.42	-	H/V	74.0/54.0	-
19216.48	-	H/V	74.0/54.0	-
21618.54	-	H/V	74.0/54.0	-
24020.6	-	H/V	74.0/54.0	-

**CH Middle**

Freq. (MHz)	Emission(dBu V/m) Peak Detector	HORIZ/ VERT	Limits(dBu V/m) Peak/ Average	Margin (dB)
4882.18	-	H/V	74.0/54.0	-
7323.27	-	H/V	74.0/54.0	-
9764.36	-	H/V	74.0/54.0	-
12205.45	-	H/V	74.0/54.0	-
14646.54	-	H/V	74.0/54.0	-
17087.63	-	H/V	74.0/54.0	-
19528.72	-	H/V	74.0/54.0	-
21969.81	-	H/V	74.0/54.0	-
24410.9	-	H/V	74.0/54.0	-



Report reference No.: WSCT11120844E

Issued: December 30, 2011

Revised: None

### CH High

Freq. (MHz)	Emission(dBμ V/m) Peak Detector	HORIZ/ VERT	Limits(dBμ V/m) Peak/ Average	Margin (dB)
4960.26	-	H/V	74.0/54.0	-
7440.39	-	H/V	74.0/54.0	-
9920.52	-	H/V	74.0/54.0	-
12400.65	-	H/V	74.0/54.0	-
14880.78	-	H/V	74.0/54.0	-
17360.91	-	H/V	74.0/54.0	-
19841.04	-	H/V	74.0/54.0	-
22321.17	-	H/V	74.0/54.0	-
24801.3	-	H/V	74.0/54.0	-

Note: - means the emission is too low at least 20dB to the limit.

### C. General Radiated Emission Data

Product:	Smart Controller	Test mode:	transmitting
Test Item:	Radiated Emission Data	Temperature:	25°C
Test Voltage:	AC 120V	Humidity:	56%RH
Test Result:	PASS		

Freq. (MHz)	Emission(dBμ V/m) Peak Detector	HORIZ/ VERT	Limits(dBμ V/m) Peak/ Average	Margin (dB)
96.82	30.3	HORIZ	43.5	13.2
96.82	32.6	VERT	43.5	10.9
195.53	27.5	HORIZ	43.5	16.0
195.53	30.7	VERT	43.5	12.8
432.43	29.8	HORIZ	46	16.2
432.43	32.6	VERT	46	13.4



### **7.3. Band edge test**

#### **7.3.1. Limits**

According 15.249(d), Emission radiated outside of the specified frequency bands, except for harmonics, shall be attenuated by at least 50dB below the level of the fundamental or to the general radiated emission limits in section 15.209, whichever is the lesser attenuation.

#### **7.3.2. TEST INSTRUMENT**

Same as 7.2.2

#### **7.3.3. Test procedure**

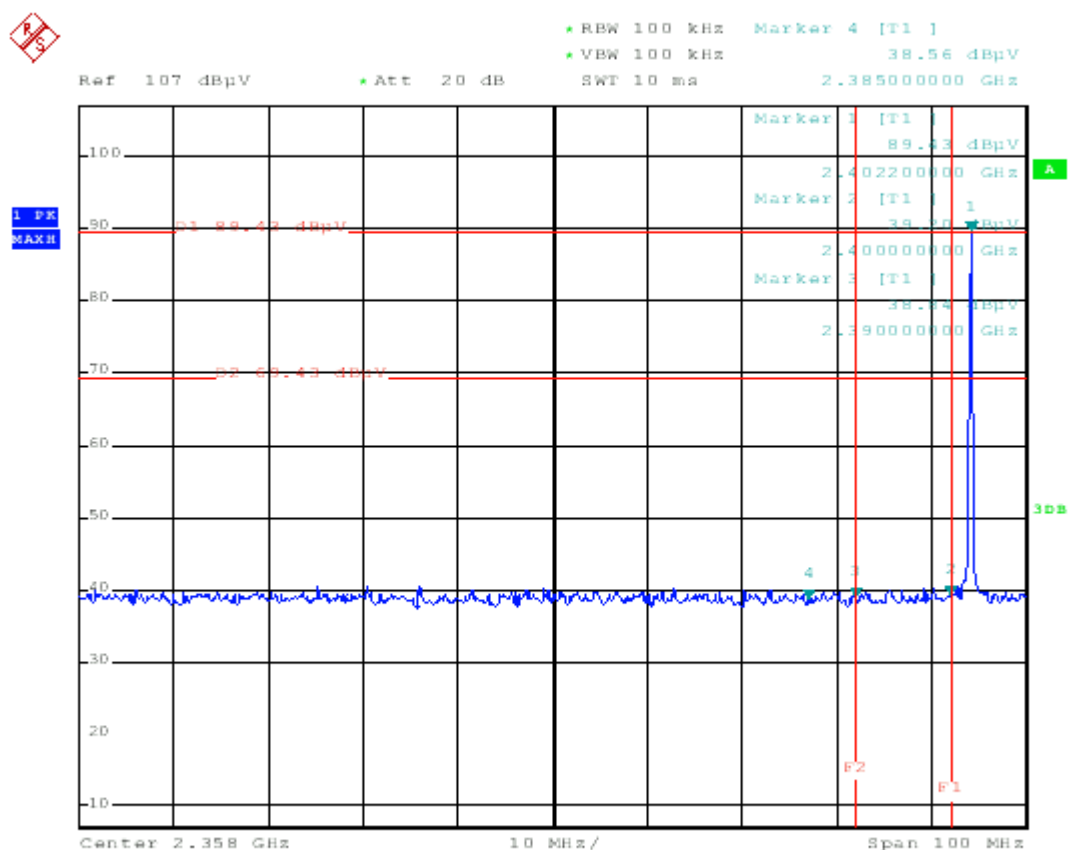
1. The EUT was placed on a turntable which is 0.8m above ground plane.
2. Set EUT as continuous transmitting mode.
3. Set the EUT work on the CH1, CH79 individually.
4. Set SPA Frequency = Operation frequency, for PK: RBW = 1MHz, VBW=3MHz
5. Set SPA trace max hold, then view.

#### **7.3.4. Test setup diagram**

Same as 7.2.4

### 7.3.5. Test result

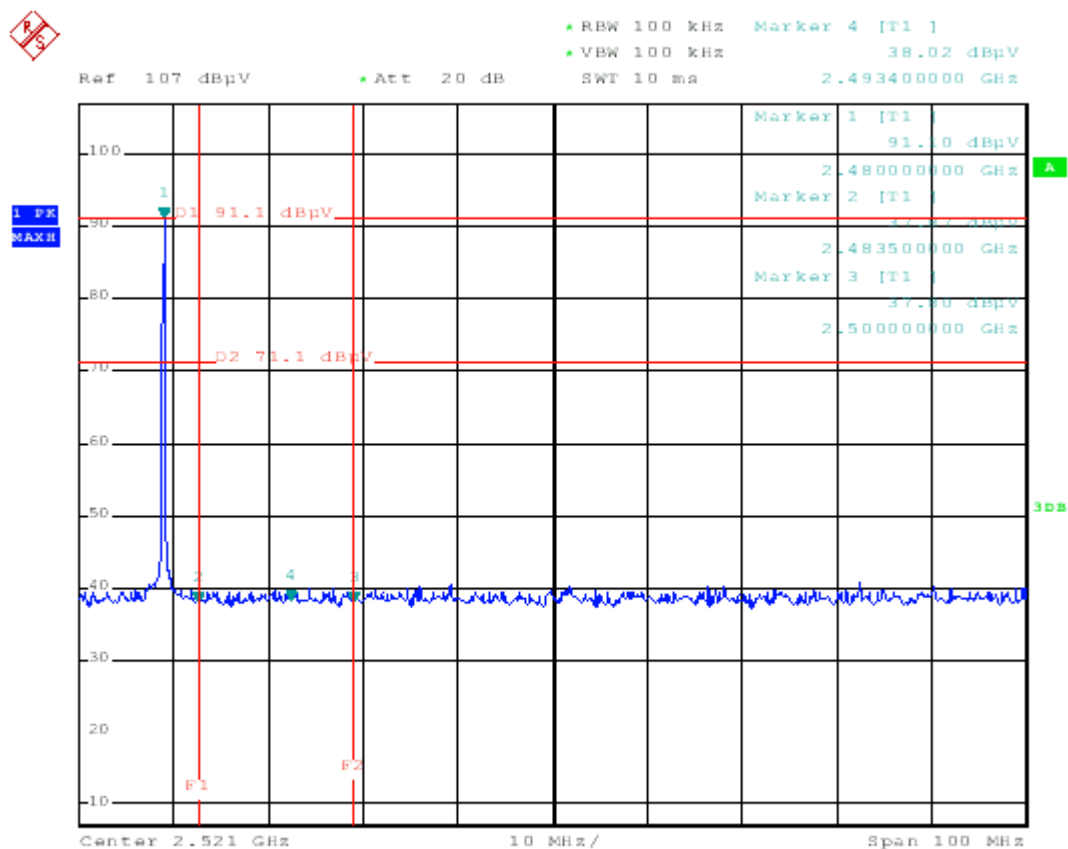
Product:	Smart Controller	Test mode:	CH Low,CH High
Test Item:	Band edge	Temperature:	25°C
Test Voltage:	AC 120V	Humidity:	56%RH
Test Result:	PASS		



#### Emission in the Restricted Bands

Frequency [MHz]	dBc [dB]	AV [dBμV/m]	Polarity (H/V)	AV limit [dBμV/m]
2310	-	34.6	V	54
2385	-	34.7	V	54
2390	-	34.8	V	54

The above field strength levels were measured in Vertical polarity which is the worst case.



## Emission in the Restricted Bands

Frequency [MHz]	dBc [dB]	AV [dBμV/m]	Polarity (H/V)	AV limit [dBμV/m]
2483.5	-	32.87	V	54
2493.4	-	33.08	V	54
2500	-	33.83	V	54

The above field strength levels were measured in Vertical polarity which is the worst case.



Report reference No.: WSCT11120844E  
Issued: December 30, 2011  
Revised: None

## **8. Antenna requirement**

### **8.1. Standard applicable**

For intentional device, according to FCC 47 CFR Section 15.203, an intentional radiator shall be designed to ensure that no antenna other than that furnished by the responsible party shall be used with the device.

### **8.2. Antenna connected construction**

The antenna used in this product is PIFA antenna and no consideration of replacement.

## 9 PHOTOGRAPHS OF THE TEST CONFIGURATION

### CONDUCTED EMISSION TEST



### RADIATED EMISSION TEST BELOW 1GHz



**RADIATED EMISSION TEST ABOVE 1GHz**



**10 PHOTOGRAPHS OF EUT**

Appearance photograph of EUT



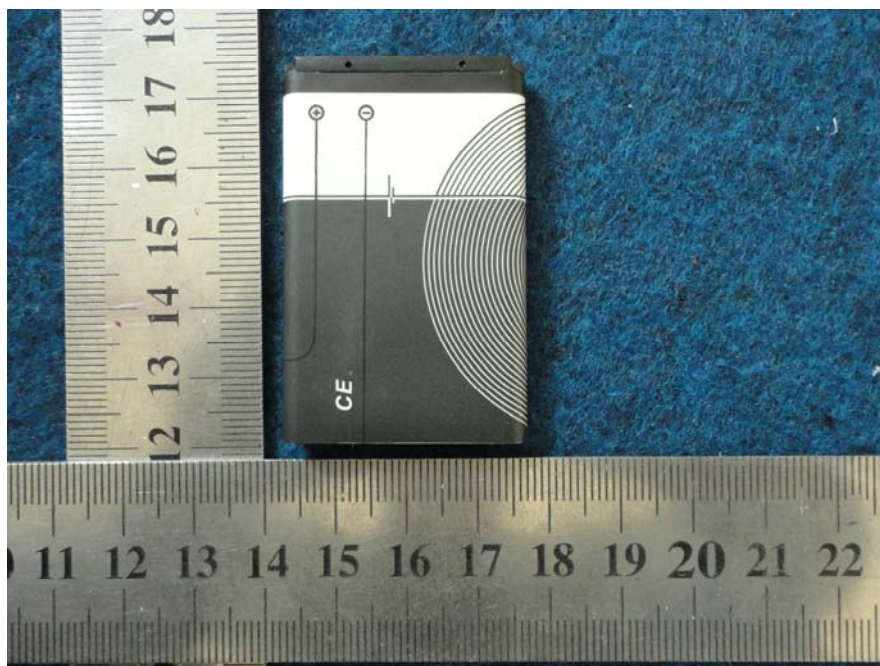
Appearance photograph of EUT



Appearance photograph of EUT



Battery photograph of EUT

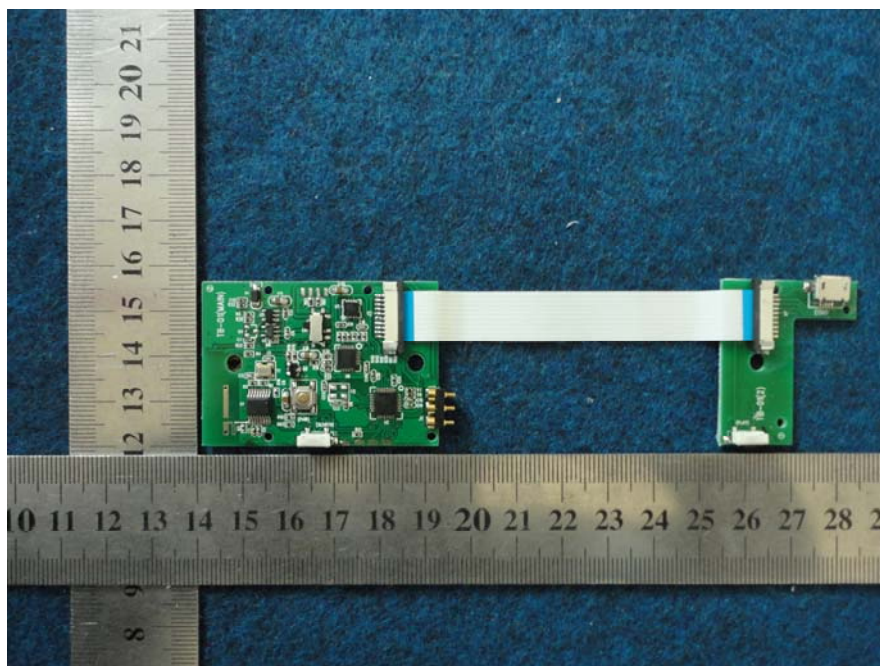




Battery photograph of EUT



PCB photograph of EUT



## PCB photograph of EUT

