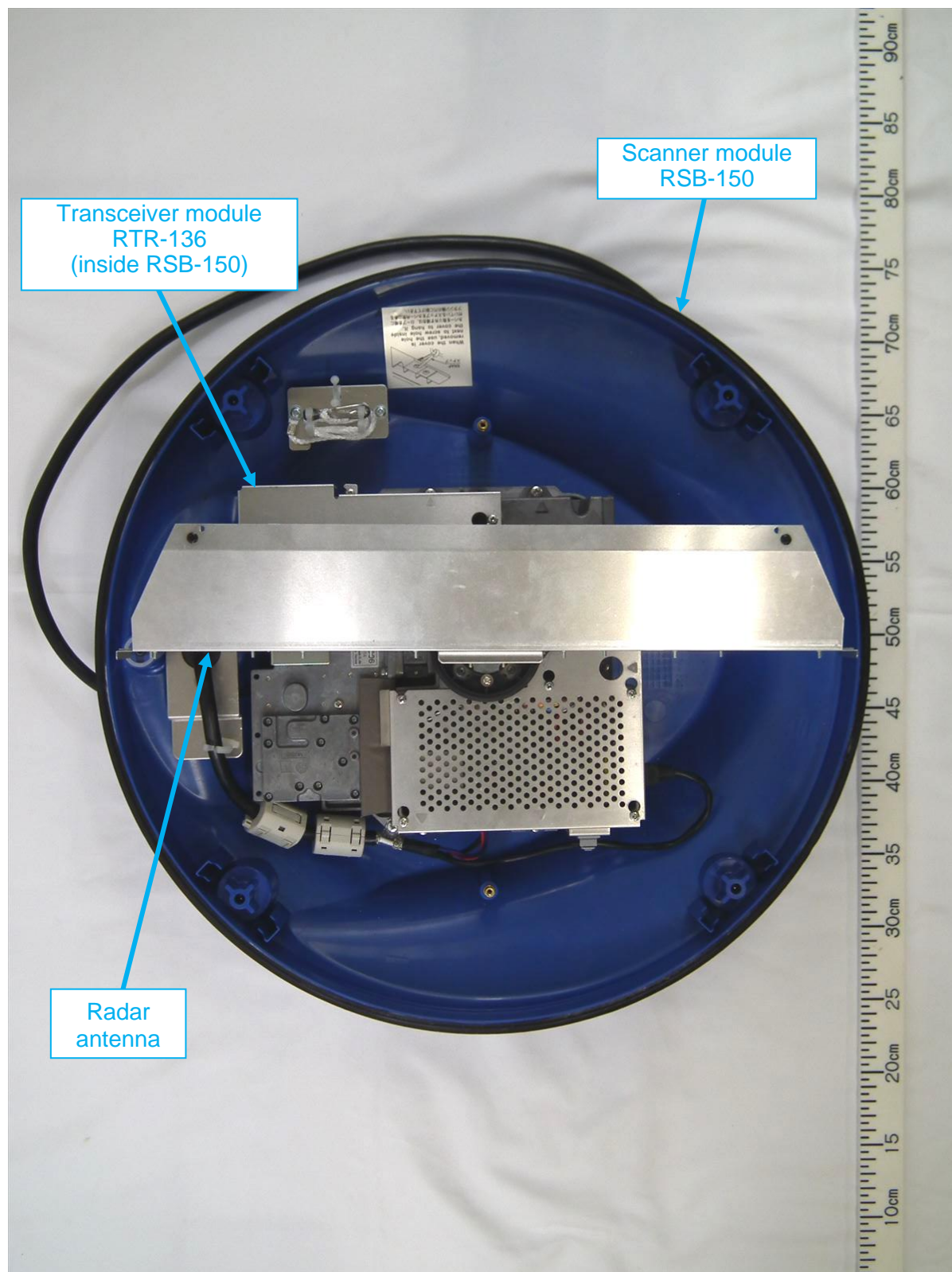


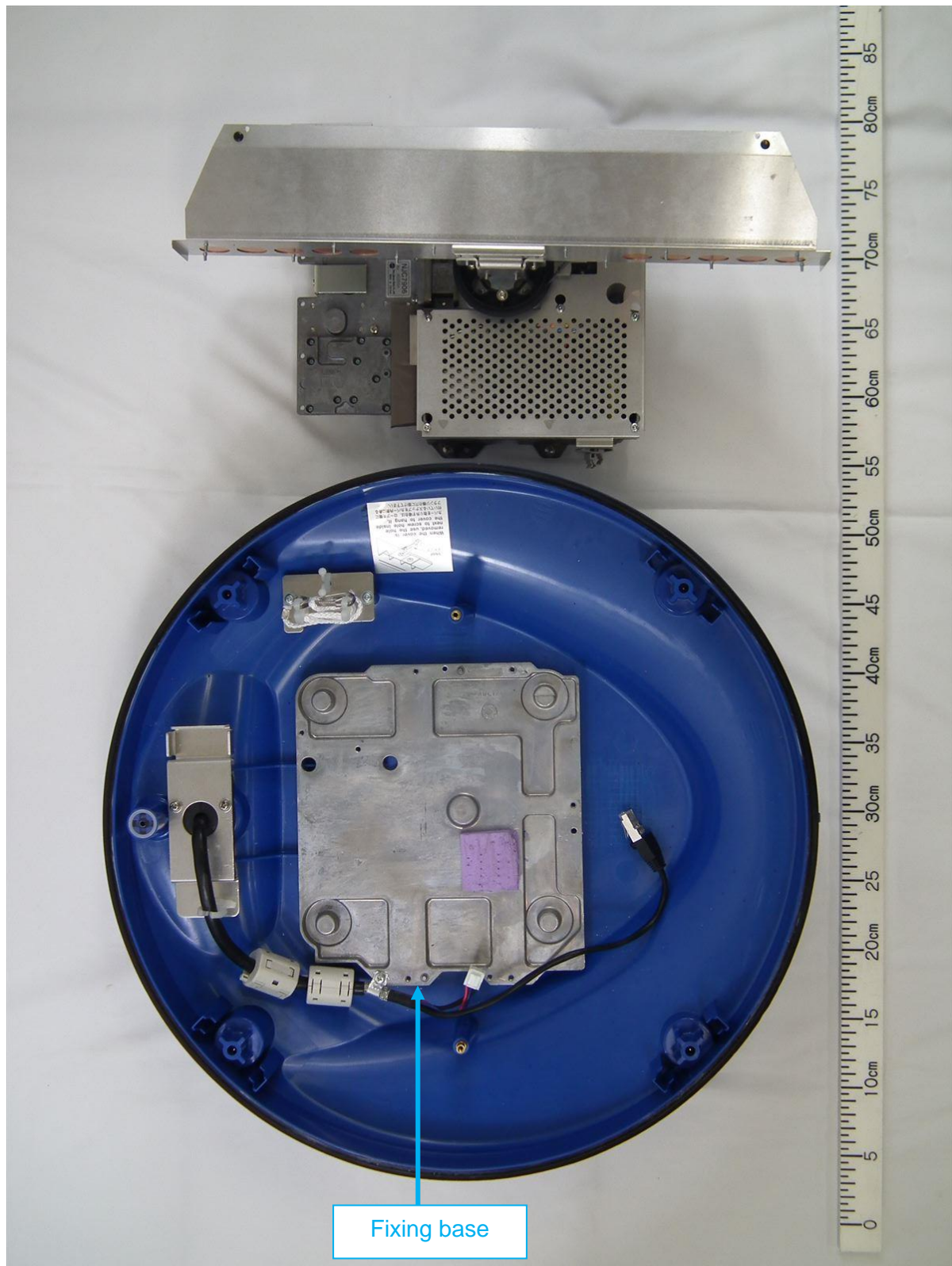
Photographs of RADAR SENSOR, DRS4DL X-Class (RSB-150-136)**1 Internal view**

1.1 Top view (with the top cover (radome) opened, showing SCANNER UNIT RSB-150 and Transceiver module RTR-136 including the radar antenna)

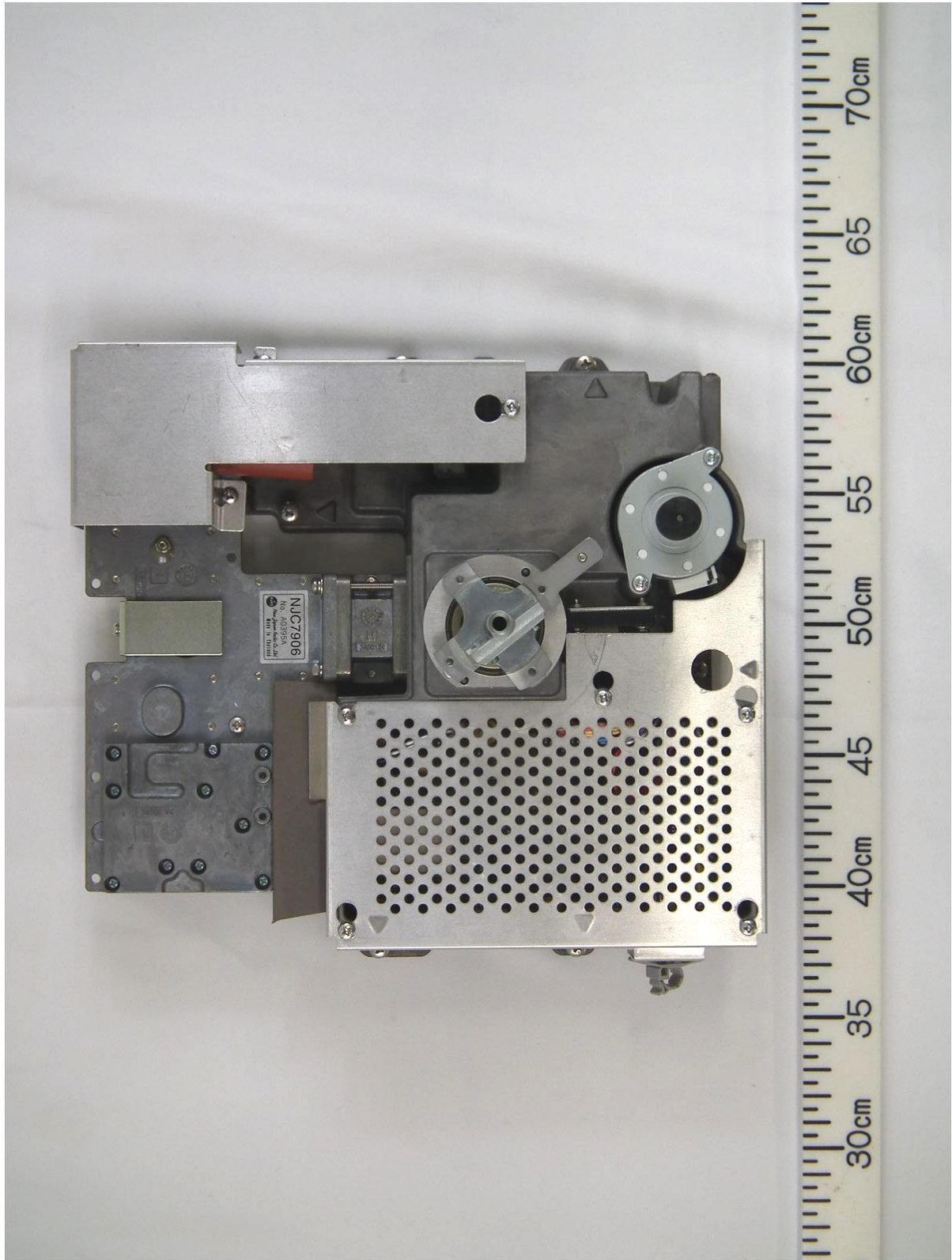


1.2 Top view

(with Transceiver module and the radar antenna removed, and showing a fixing base)

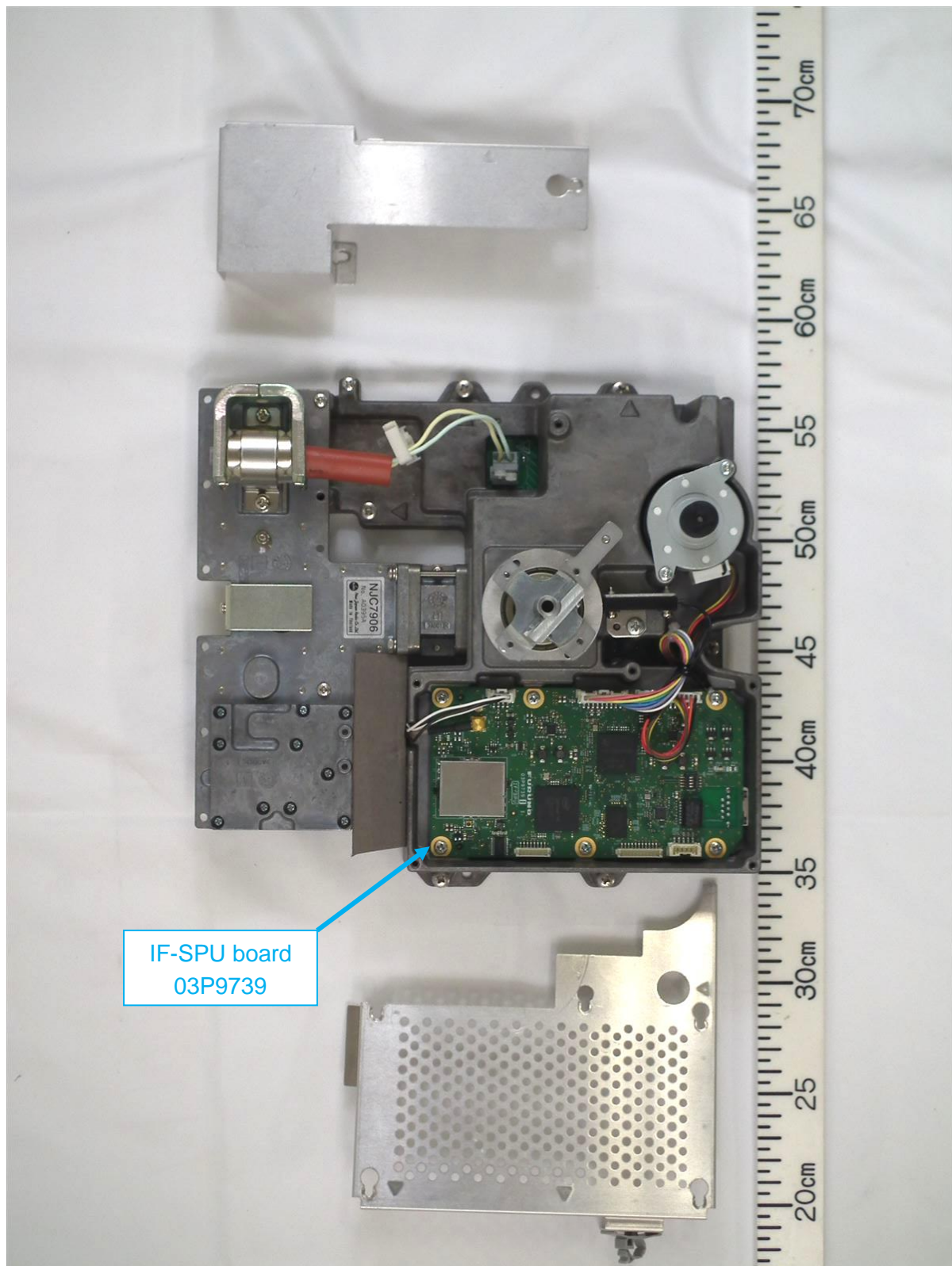


1.3 Transceiver module (with the radar antenna removed)

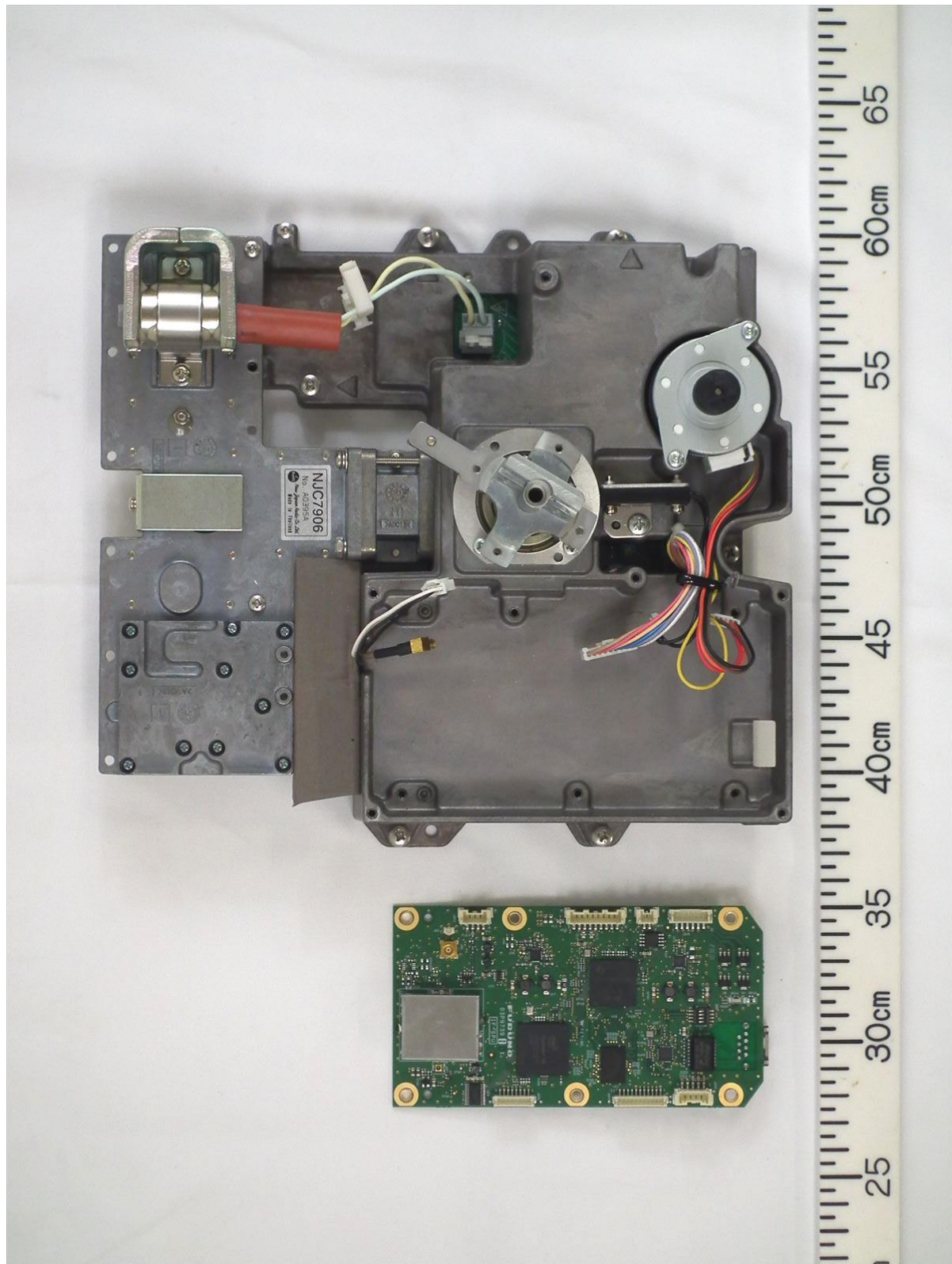


1.4 Transceiver module

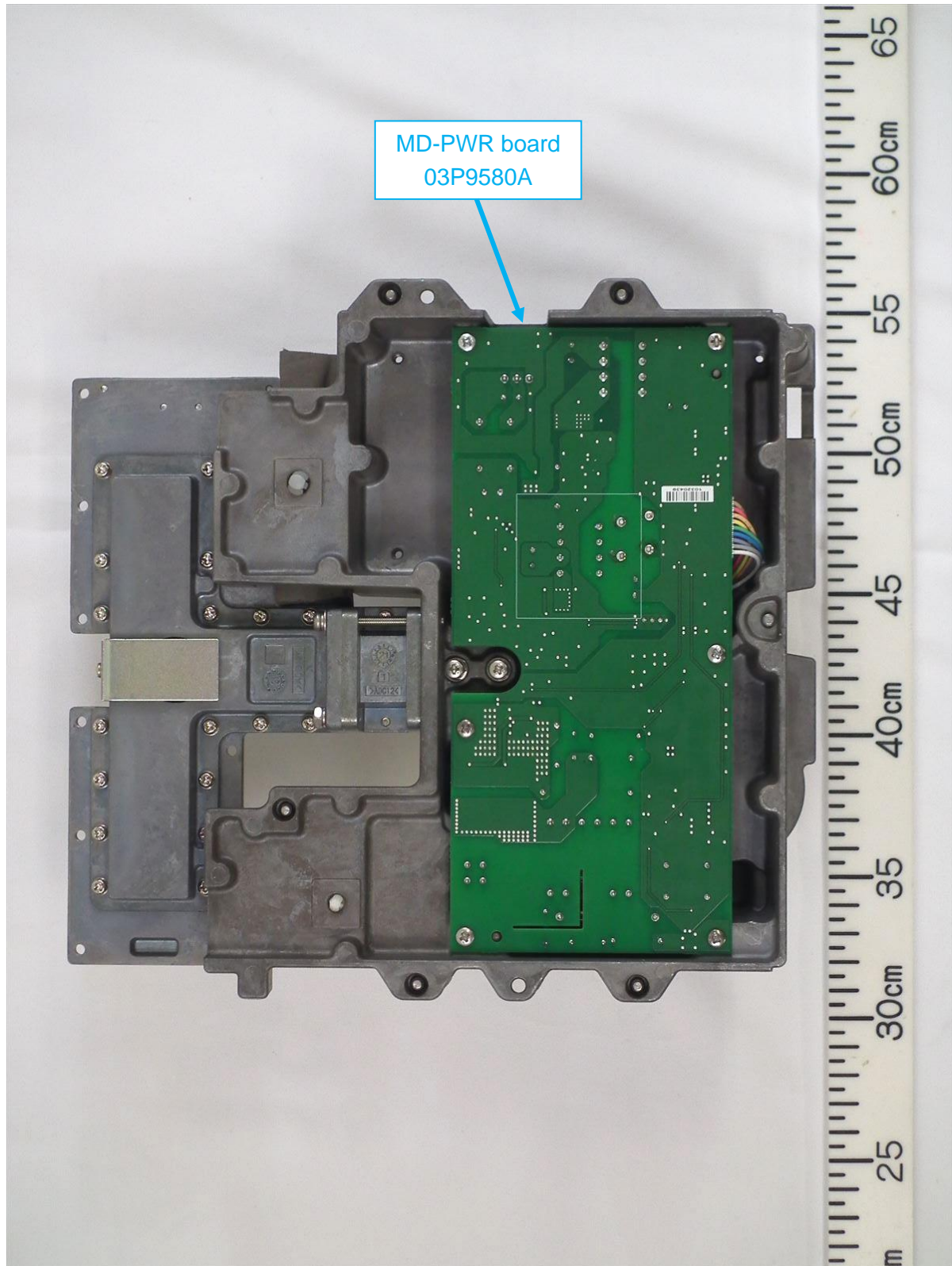
(with the shield covers opened, showing the IF-SPU board 03P9739)



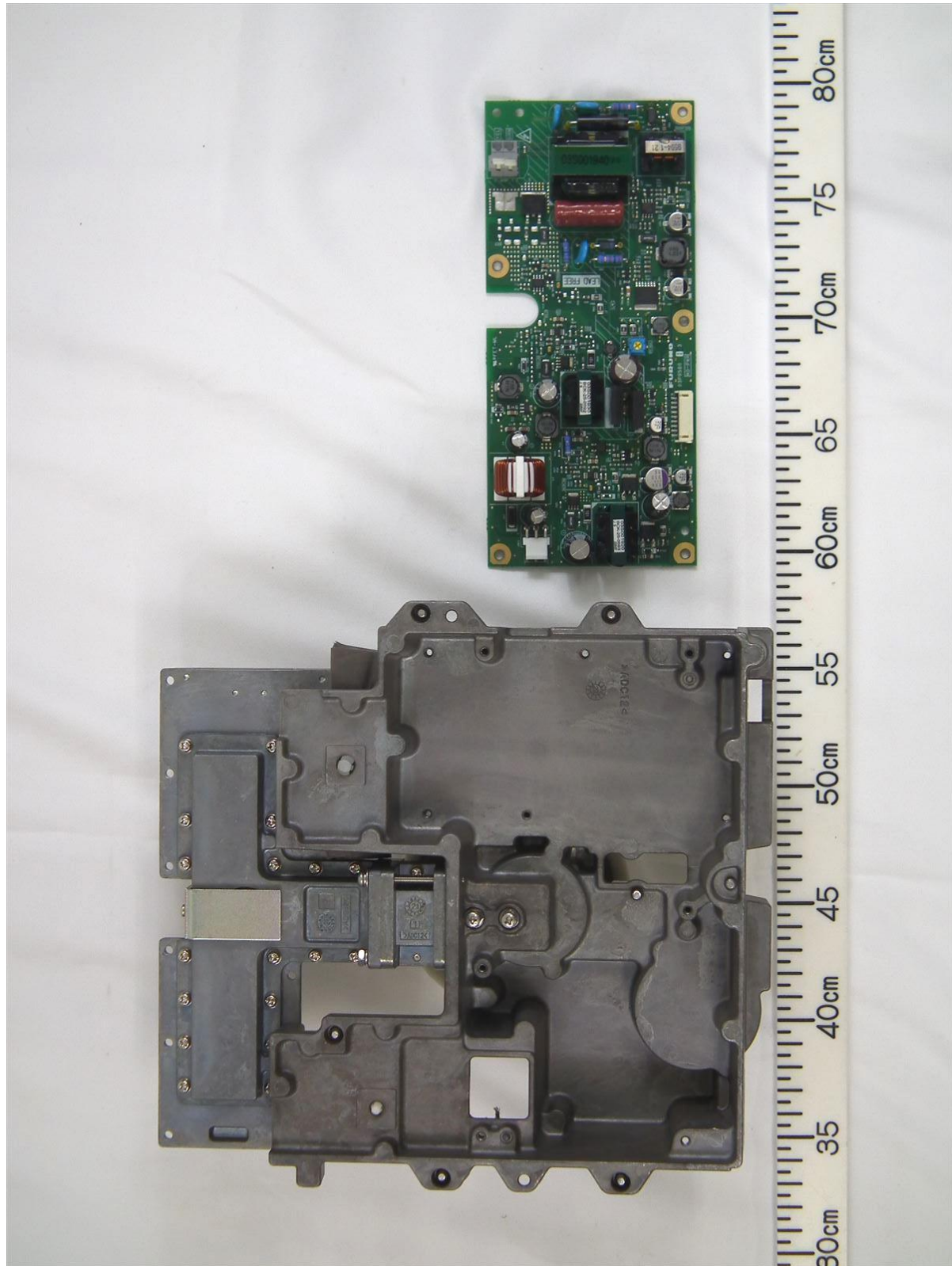
1.5 Transceiver module (with IF-SPU board 03P9739 removed)



1.6 Transceiver module (bottom side, showing MD-PWR board 03P9580A)



1.7 Transceiver module (bottom side, with MD-PWR board 03P9580A removed)



End of text