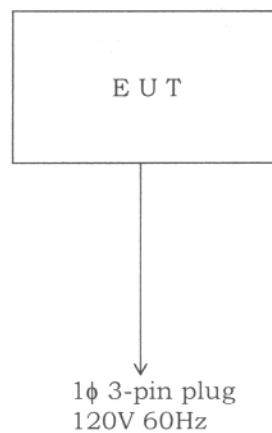




JQA Application No. : KL80060077R  
Model No. : HMB7050  
FCC ID : ACLAP7M71

Regulation : CFR 47 FCC Rules Part 18  
Issue Date : May 31, 2006

### Test System-Arrangement (Drawings)





JQA Application No. : KL80060077R  
Model No. : HMB7050  
FCC ID : ACLAP7M71

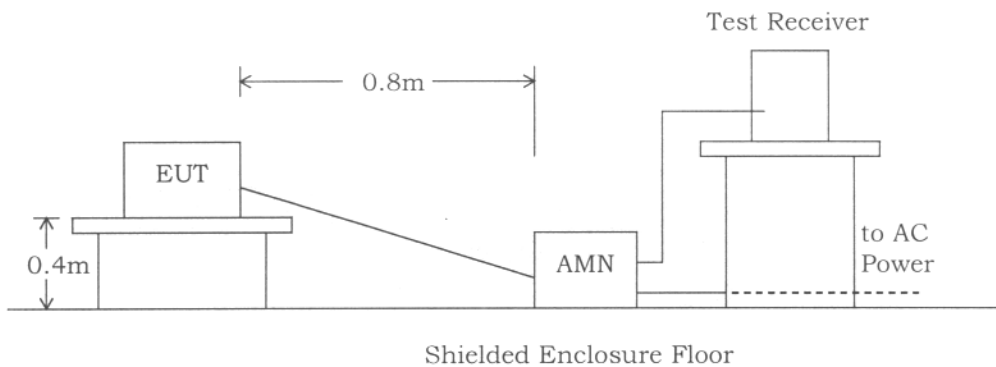
Regulation : CFR 47 FCC Rules Part 18  
Issue Date : May 31, 2006

Page 17 of 27

### Test-setup(Drawings)

#### Conducted Disturbance 150 kHz - 30 MHz:

The test was performed according to the description of FCC/OET MP-5 (1986) Sec.7.0 (Conducted Powerline Measurements).





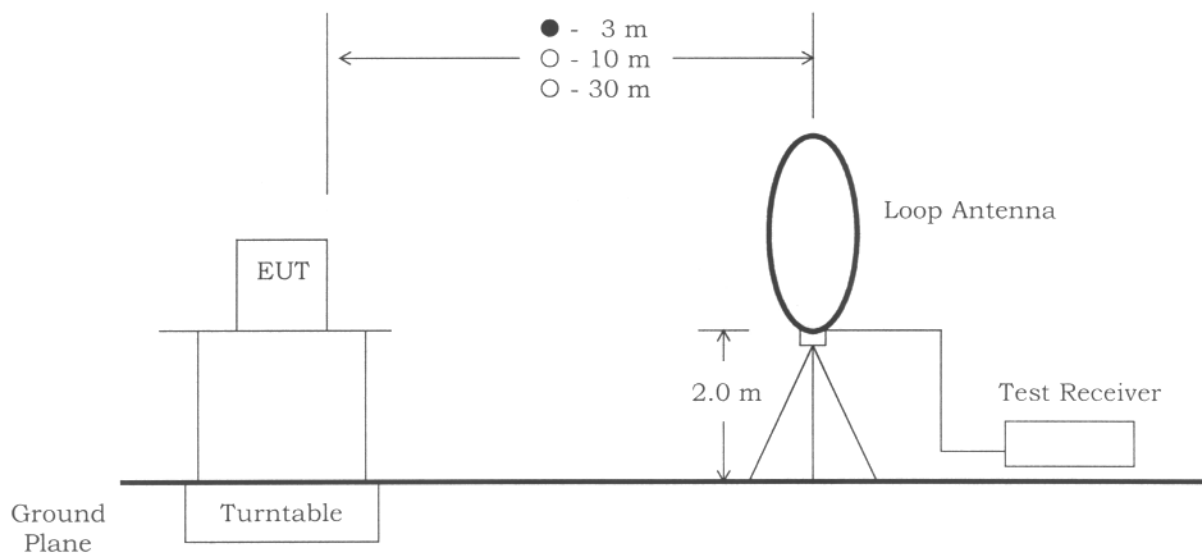
JQA Application No. : KL80060077R  
Model No. : HMB7050  
FCC ID : ACLAP7M71

Regulation : CFR 47 FCC Rules Part 18  
Issue Date : May 31, 2006

Page 18 of 27

Magnetic Field Radiated Emission 9 kHz - 30 MHz:

The test was performed according to the description of FCC/OET MP-5 (1986) Sec.5.0 (Radiated Emissions Measurements for Certified Equipment).





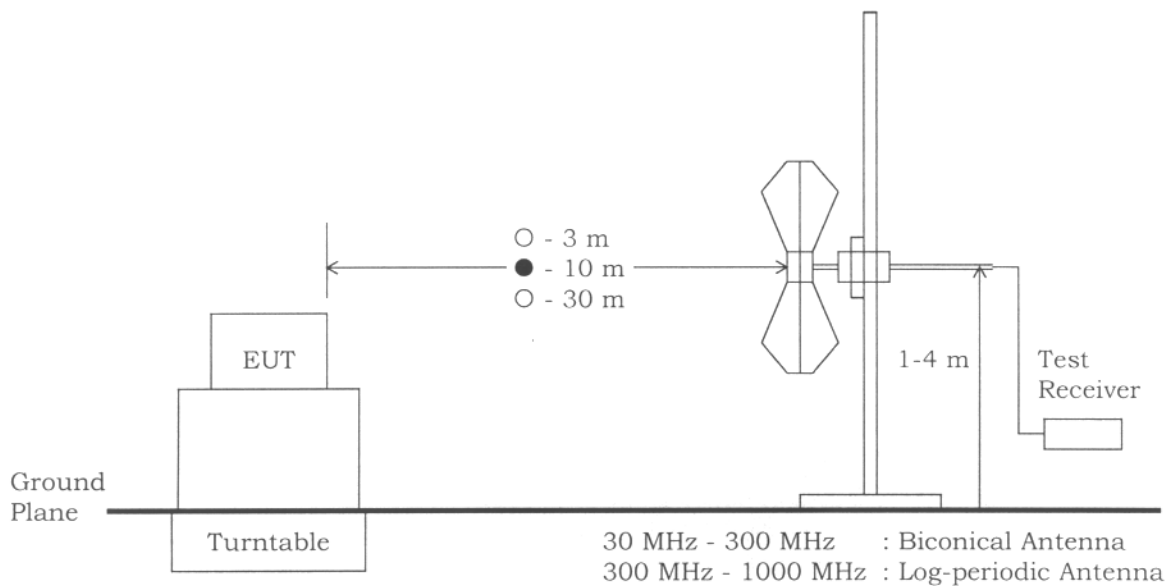
JQA Application No. : KL80060077R  
Model No. : HMB7050  
FCC ID : ACLAP7M71

Regulation : CFR 47 FCC Rules Part 18  
Issue Date : May 31, 2006

Page 19 of 27

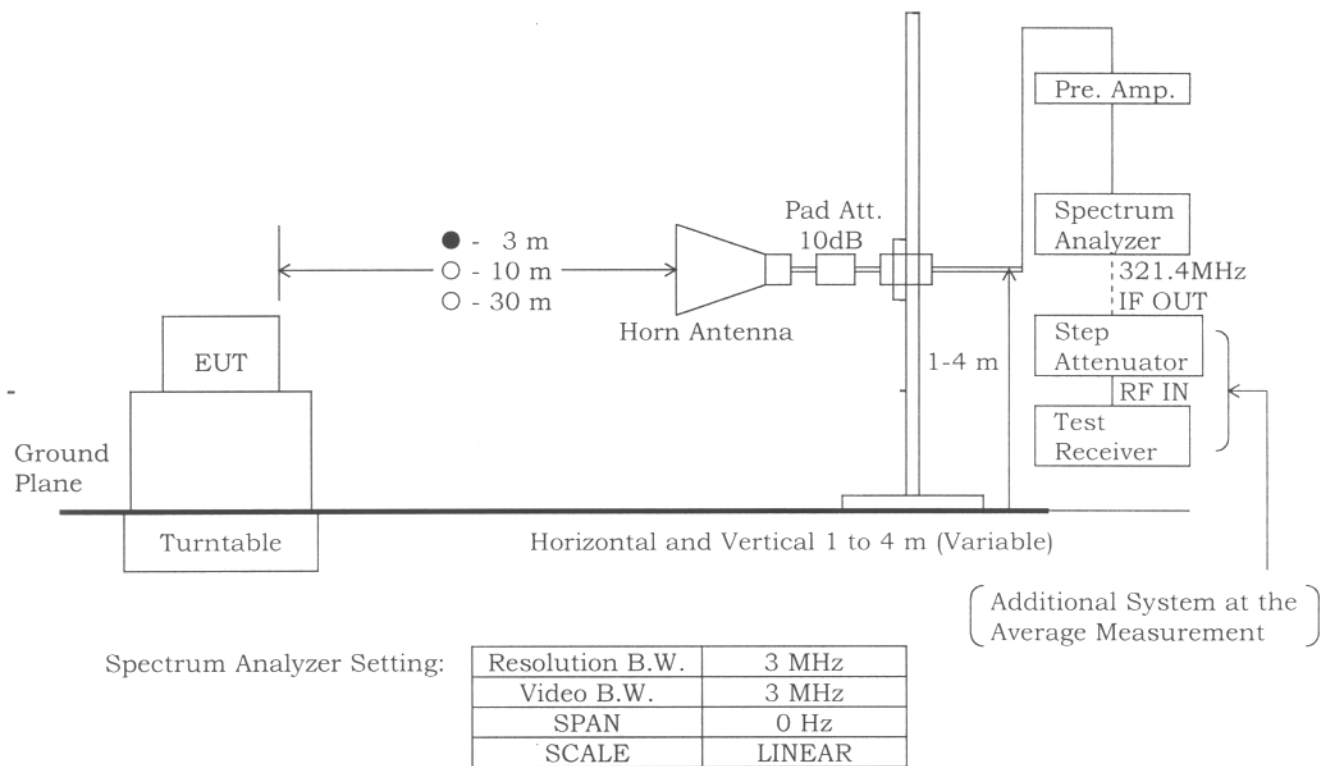
Electromagnetic Field Radiated Emission 30 MHz - 1000 MHz:

The test was performed according to the description of FCC/OET MP-5 (1986) Sec.5.0 (Radiated Emissions Measurements for Certified Equipment).



Electromagnetic Field Radiated Emission 1 GHz - 26 GHz:

The test was performed according to the description of FCC/OET MP-5 (1986) Sec.5.0 (Radiated Emissions Measurements for Certified Equipment).





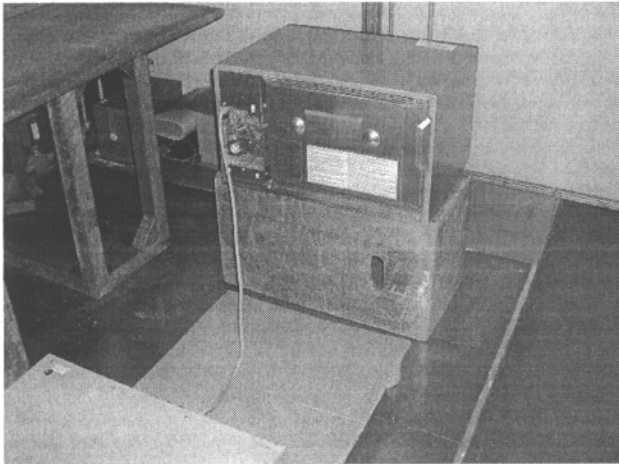
JQA Application No. : KL80060077R  
Model No. : HMB7050  
FCC ID : ACLAP7M71

Regulation : CFR 47 FCC Rules Part 18  
Issue Date : May 31, 2006

Page 21 of 27

**Test-Setup (Photographs) at worst case**

Conducted Emission :

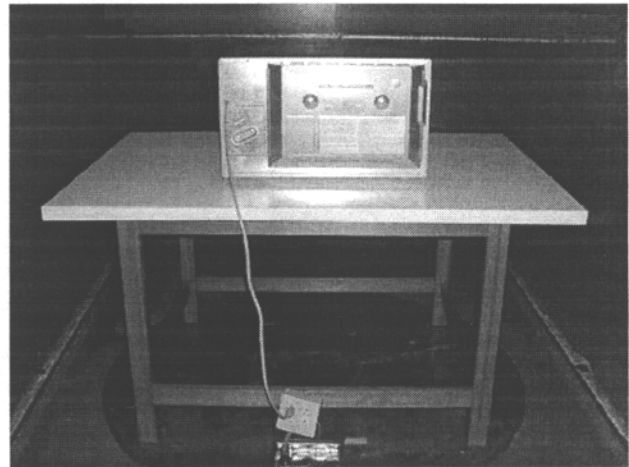


Rear View

Radiated Emission :



Front View



Rear View