

Fig. 8.4 Top Cover Removed

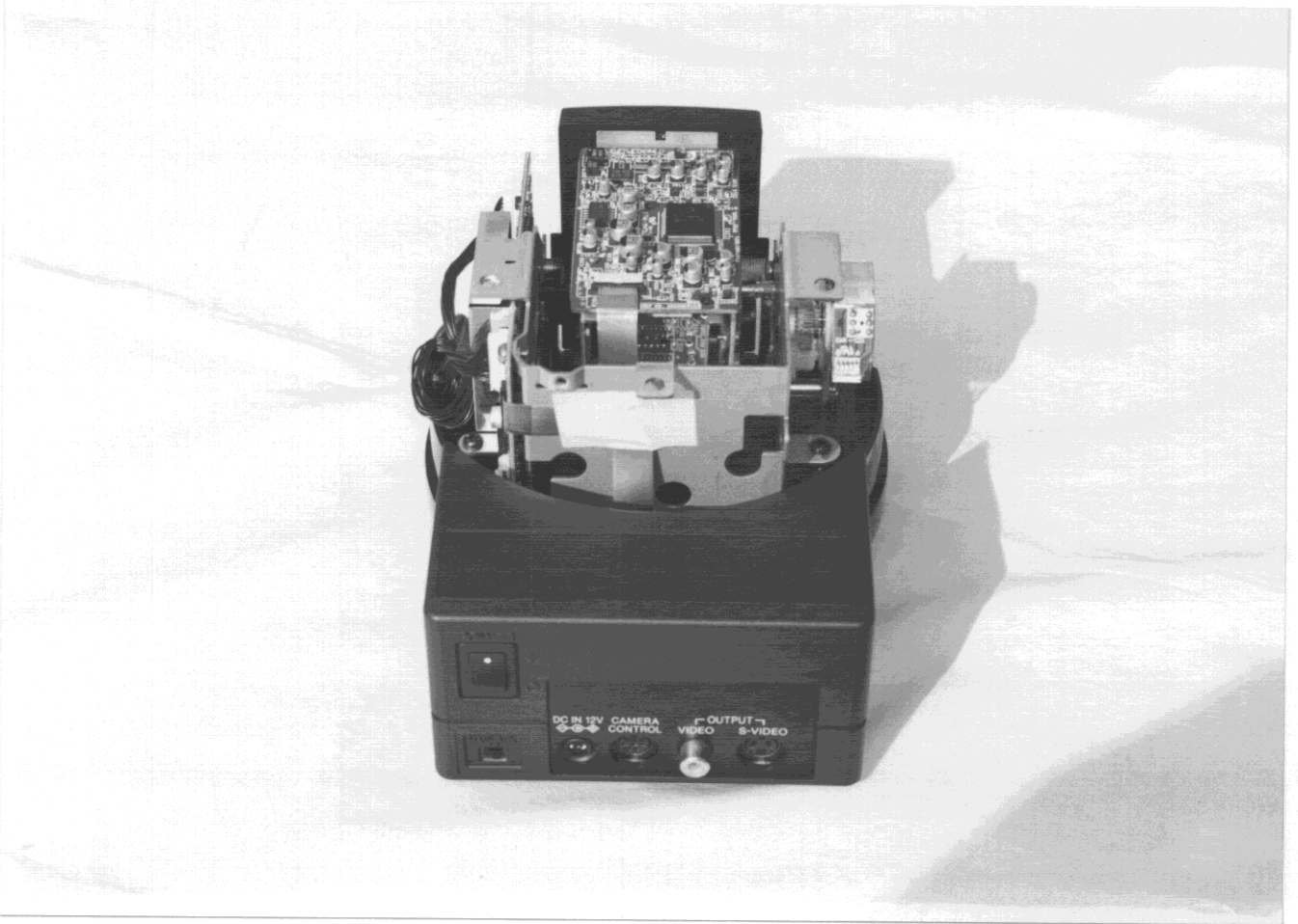


Fig. 8.5 Top Cover Removed

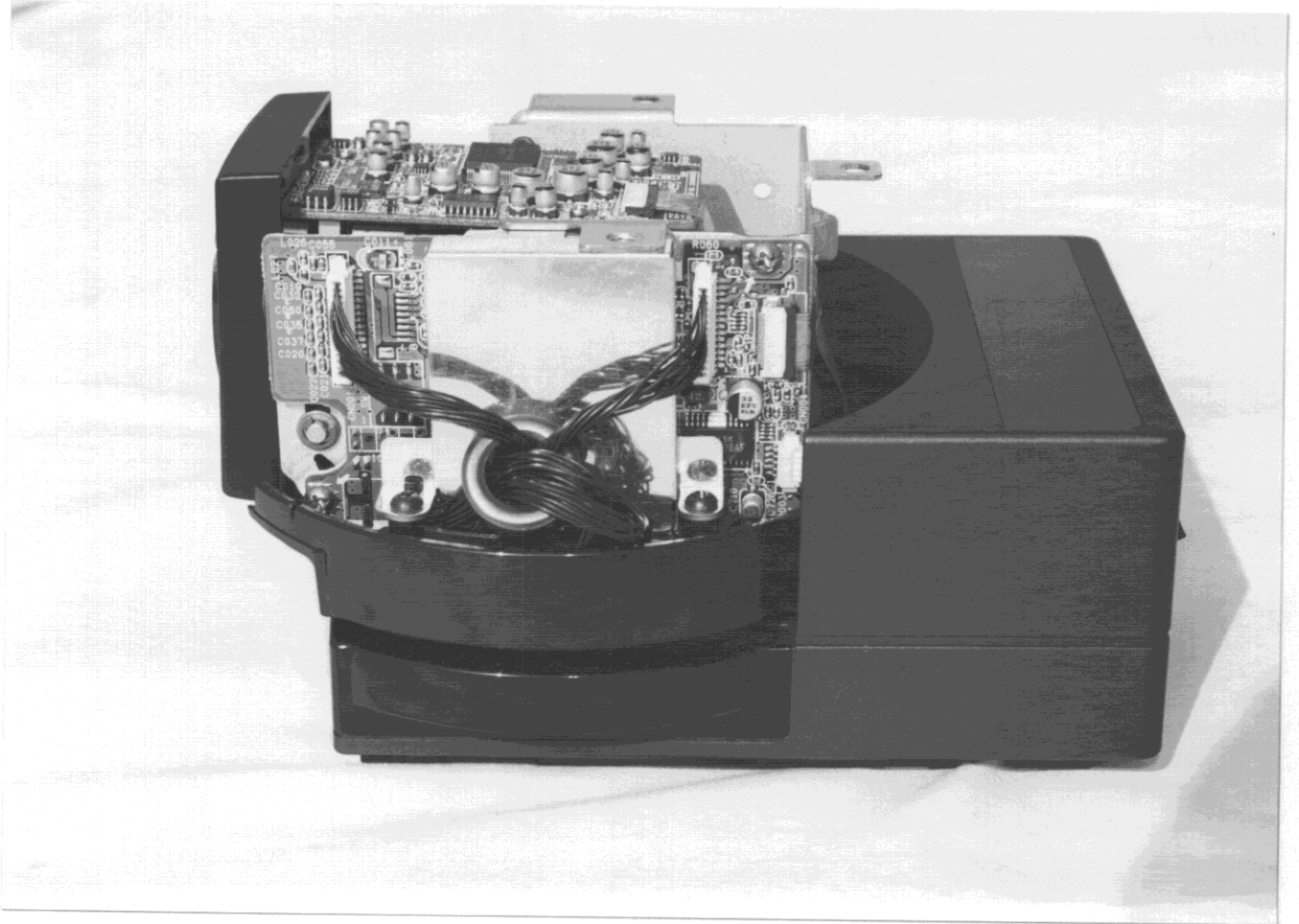


Fig. 8.6 Top Cover Removed

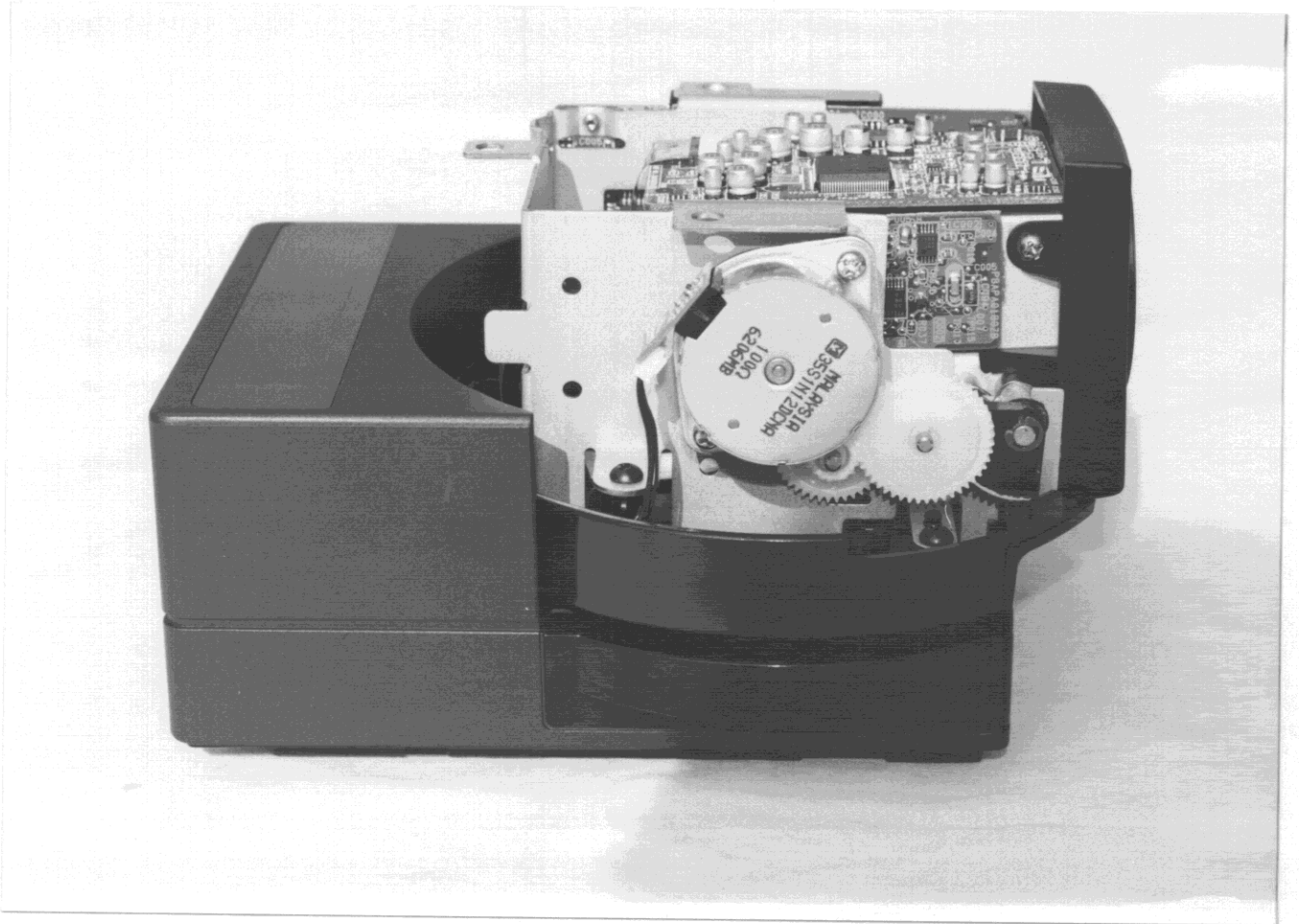


Fig. 8.7 Top Cover Removed

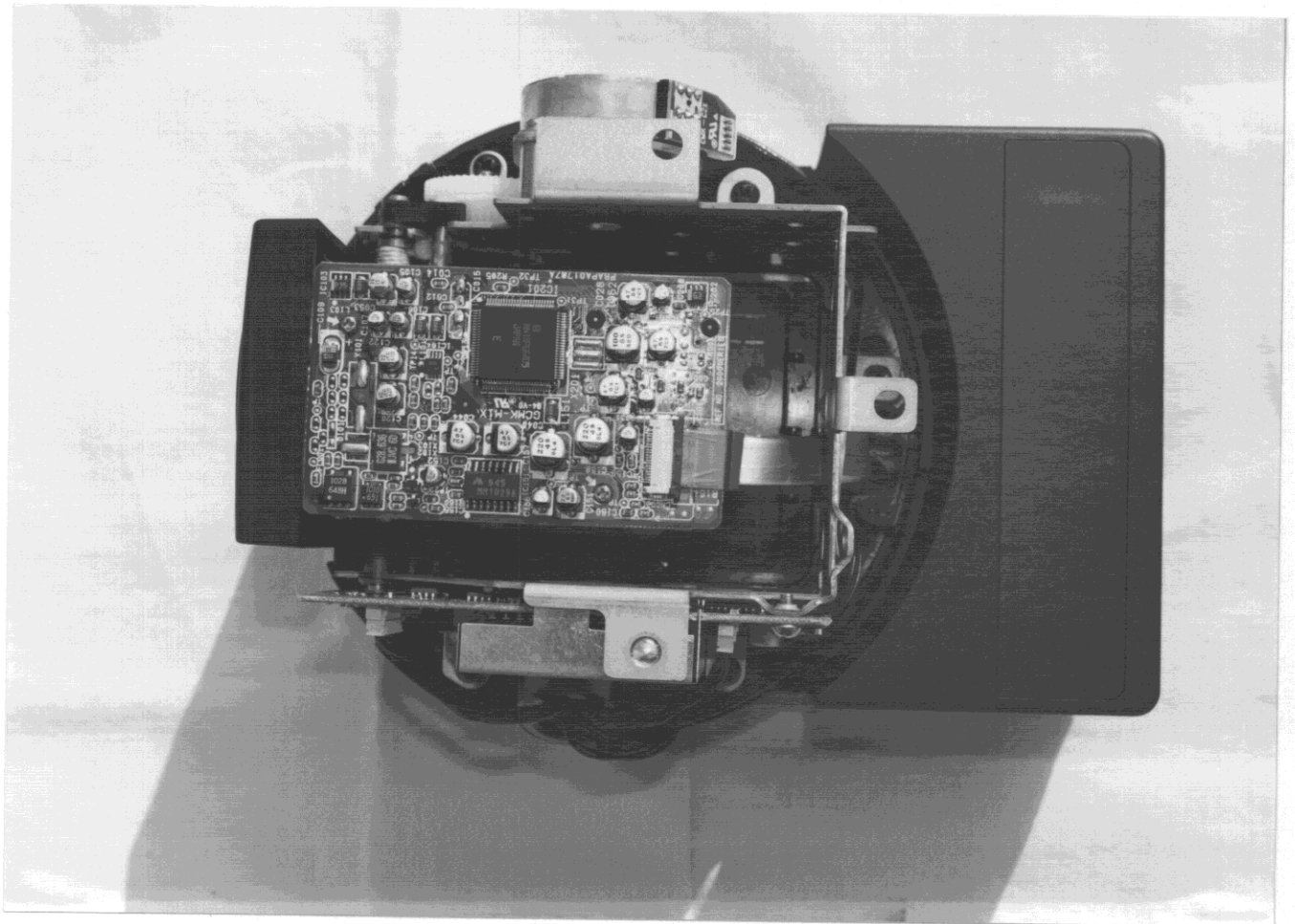


Fig. 8.8 Top Cover Removed

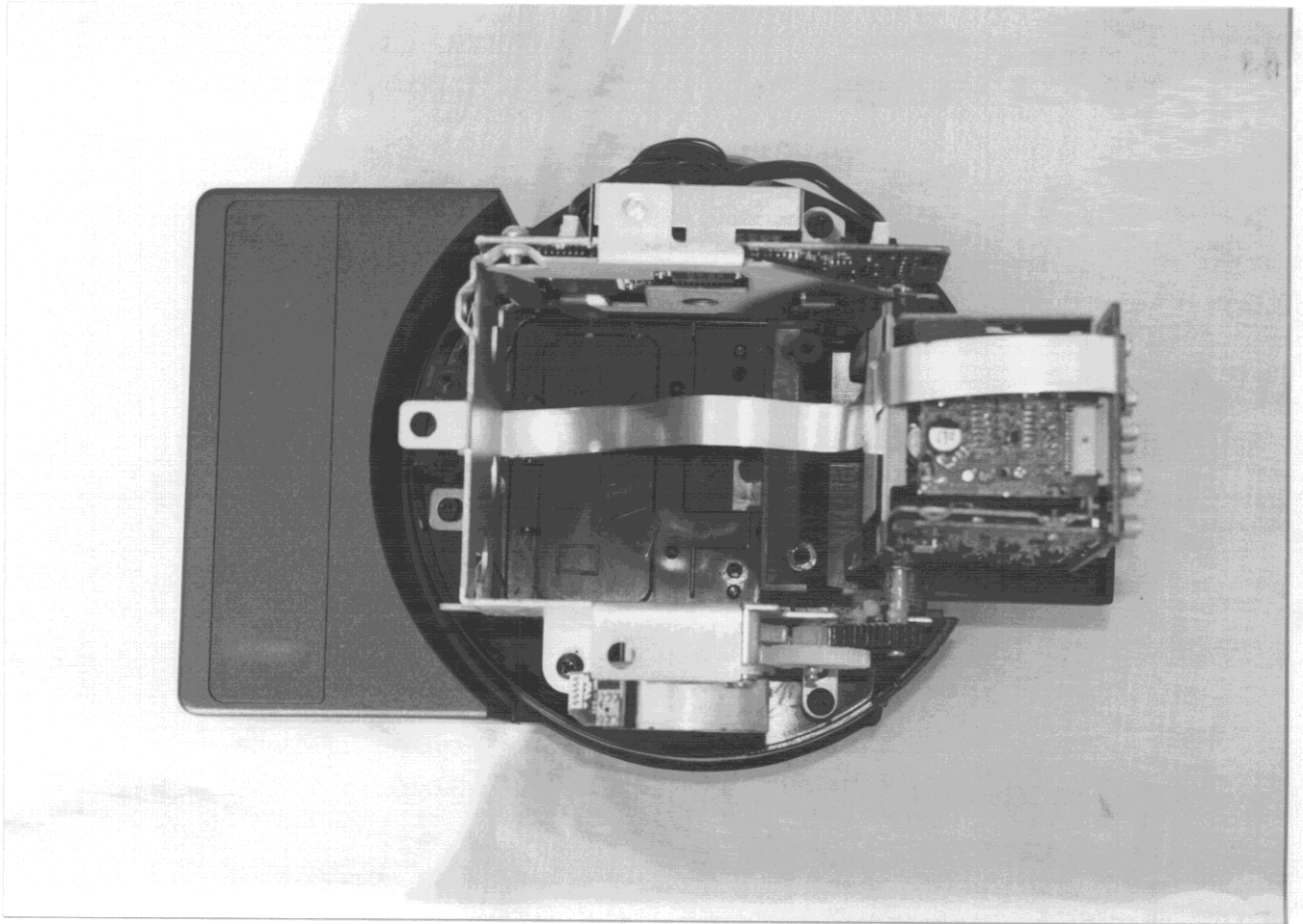


Fig. 8.9 Top Cover Removed

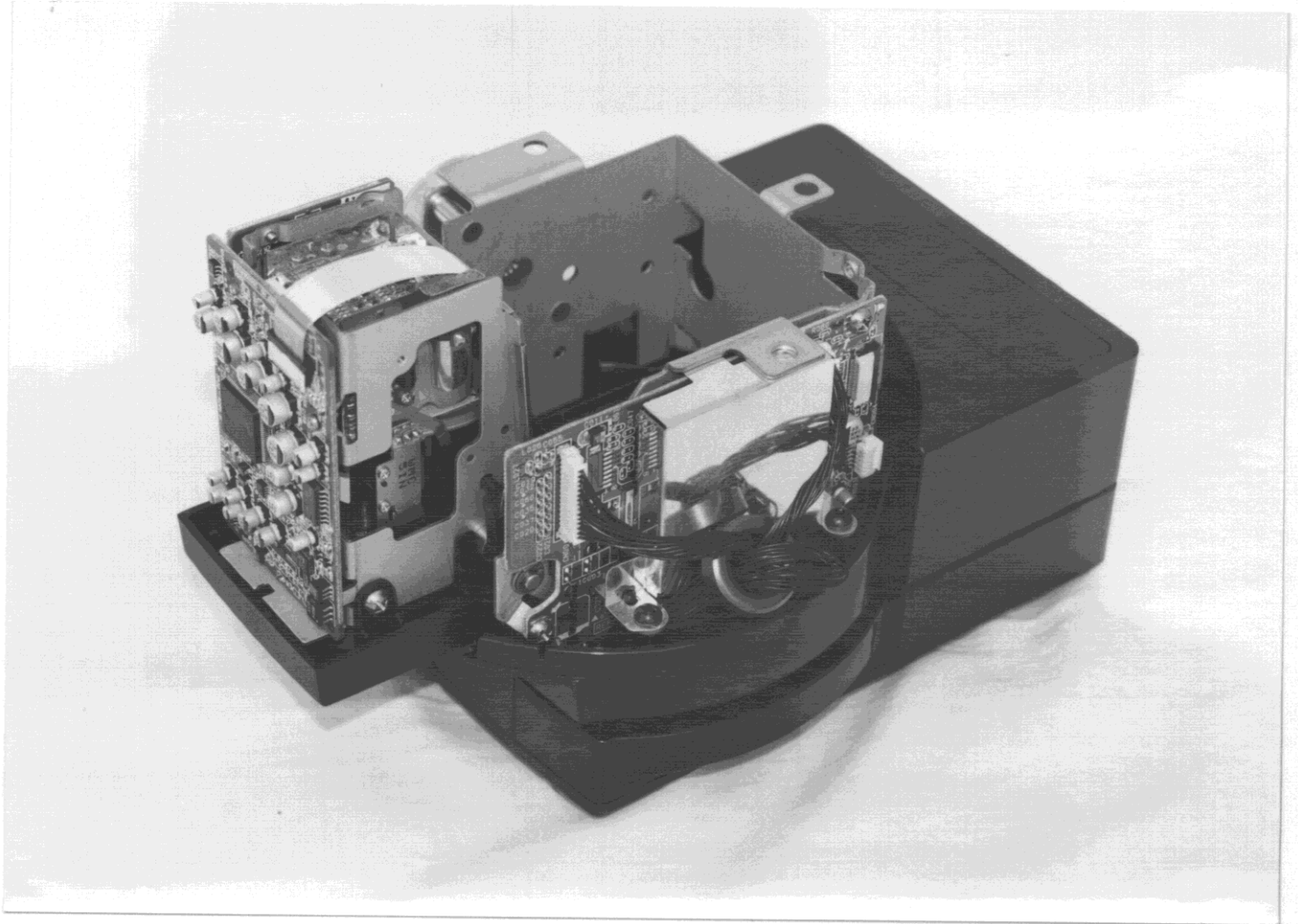


Fig. 8.10 Top Cover Removed

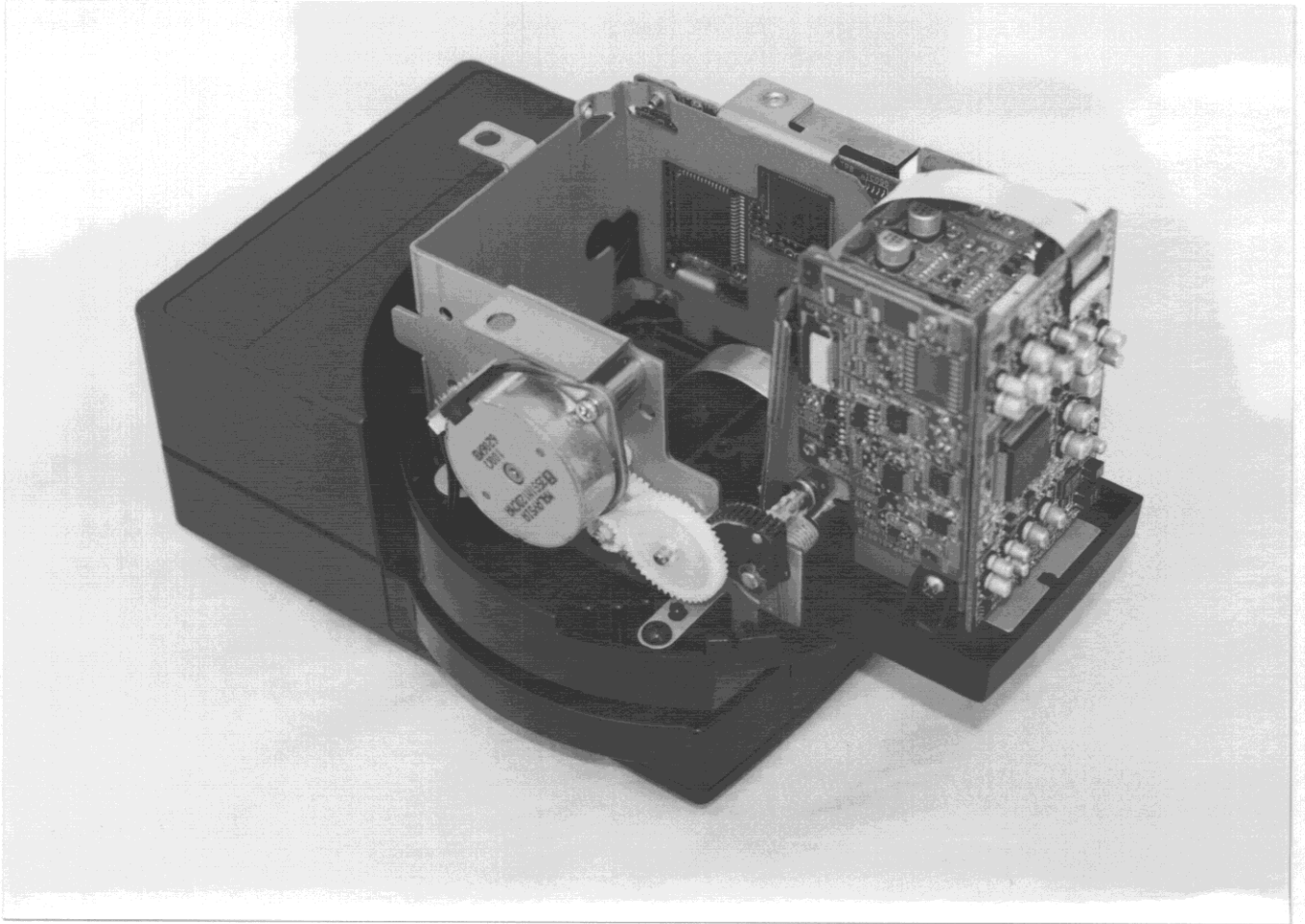


Fig. 8.11 CCD Board, Component and Foil Side

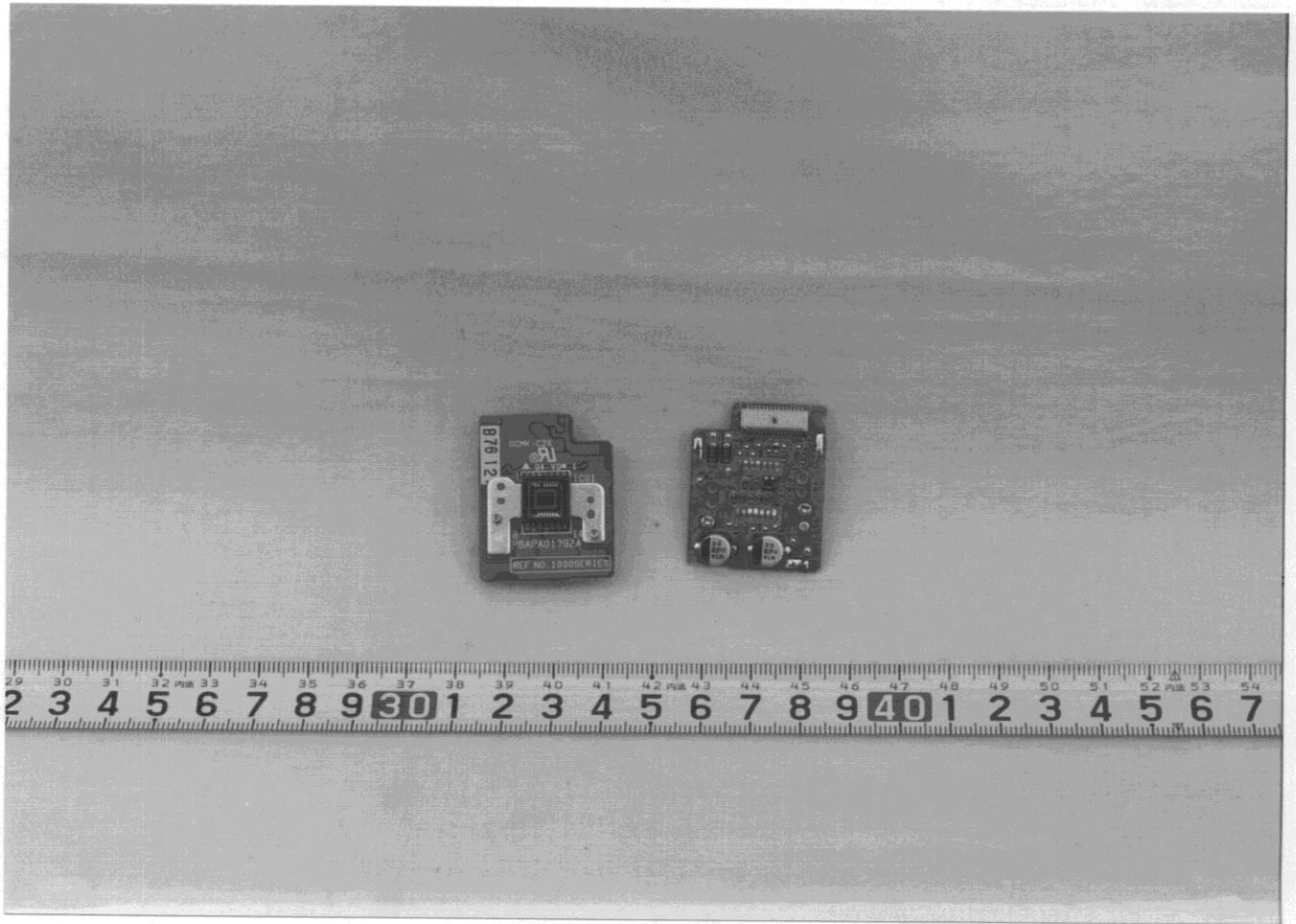


Fig. 8.12 Video Board, Component and Foil Side

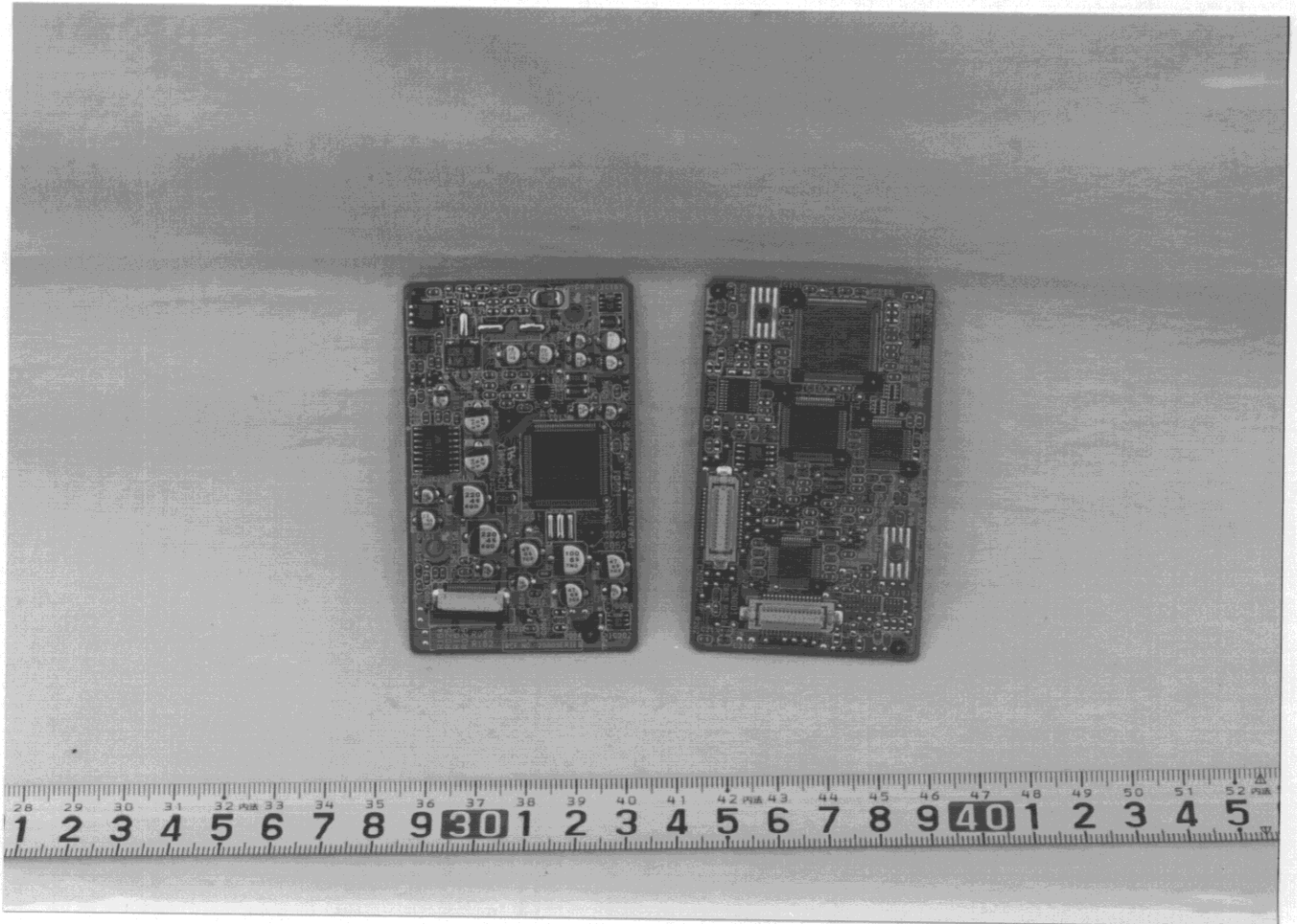


Fig. 8.13 CPU Board, Component and Foil Side

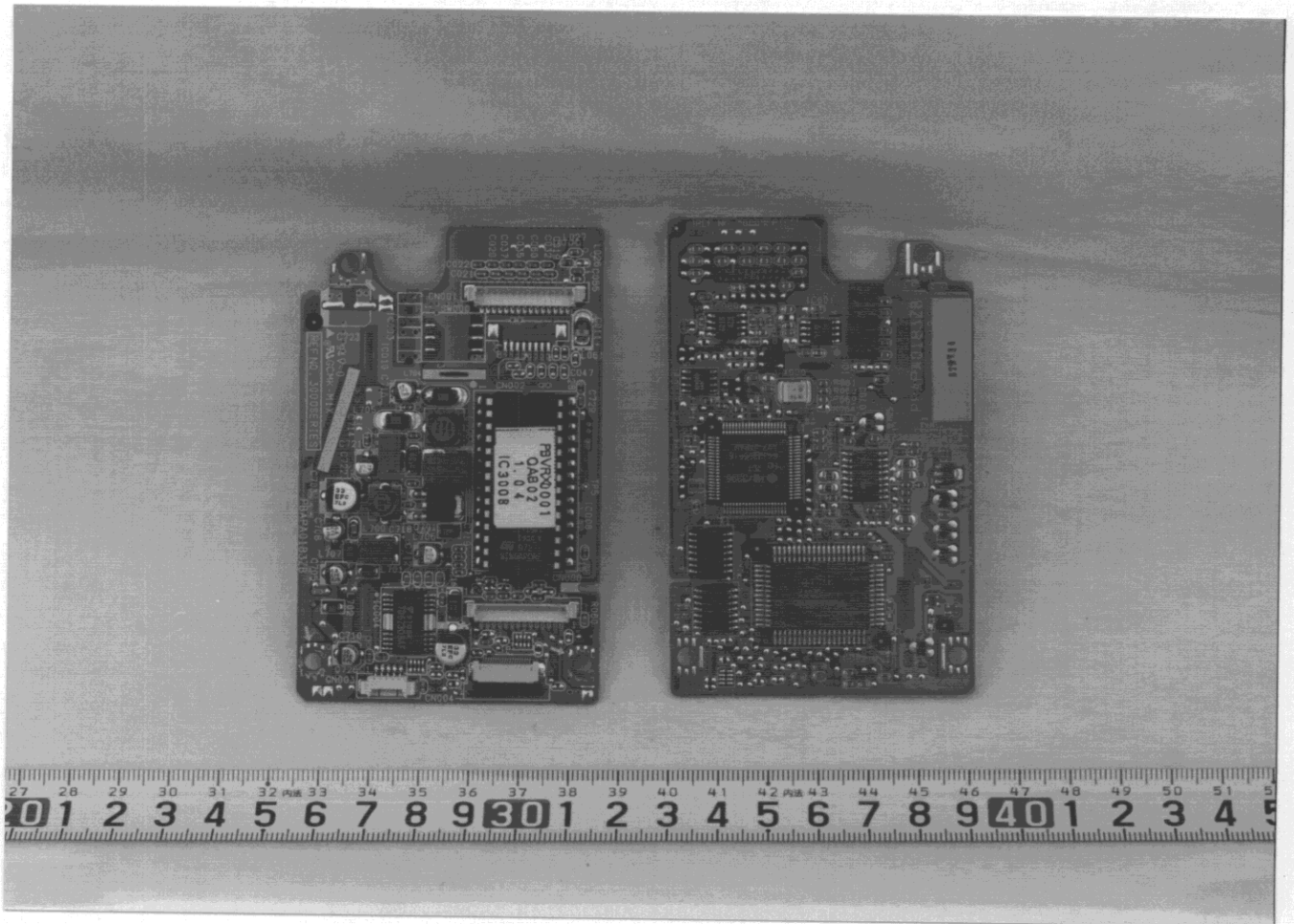


Fig. 8.14 AF Board, Component and Foil Side

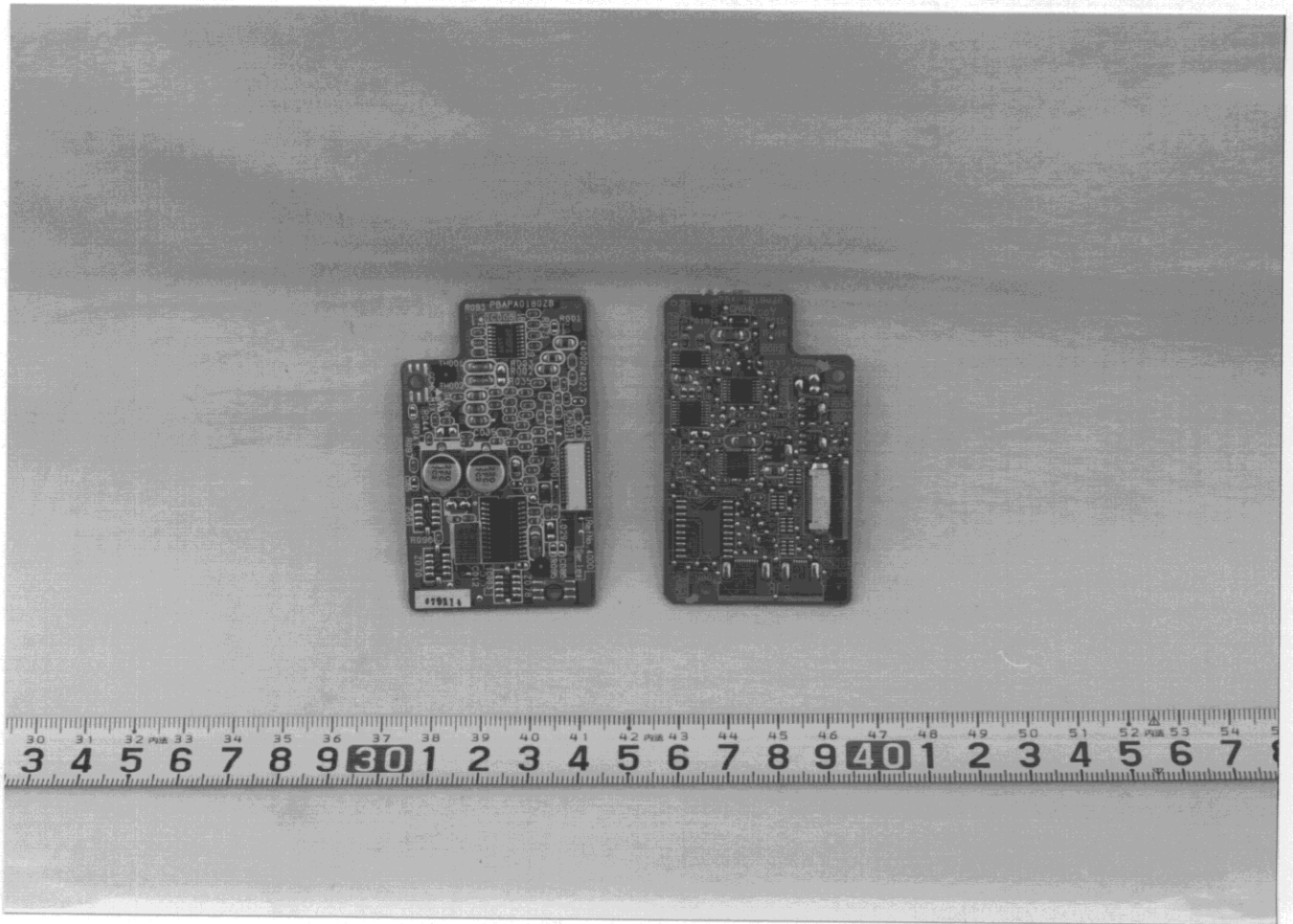


Fig. 8.15 Base Board, Component Side

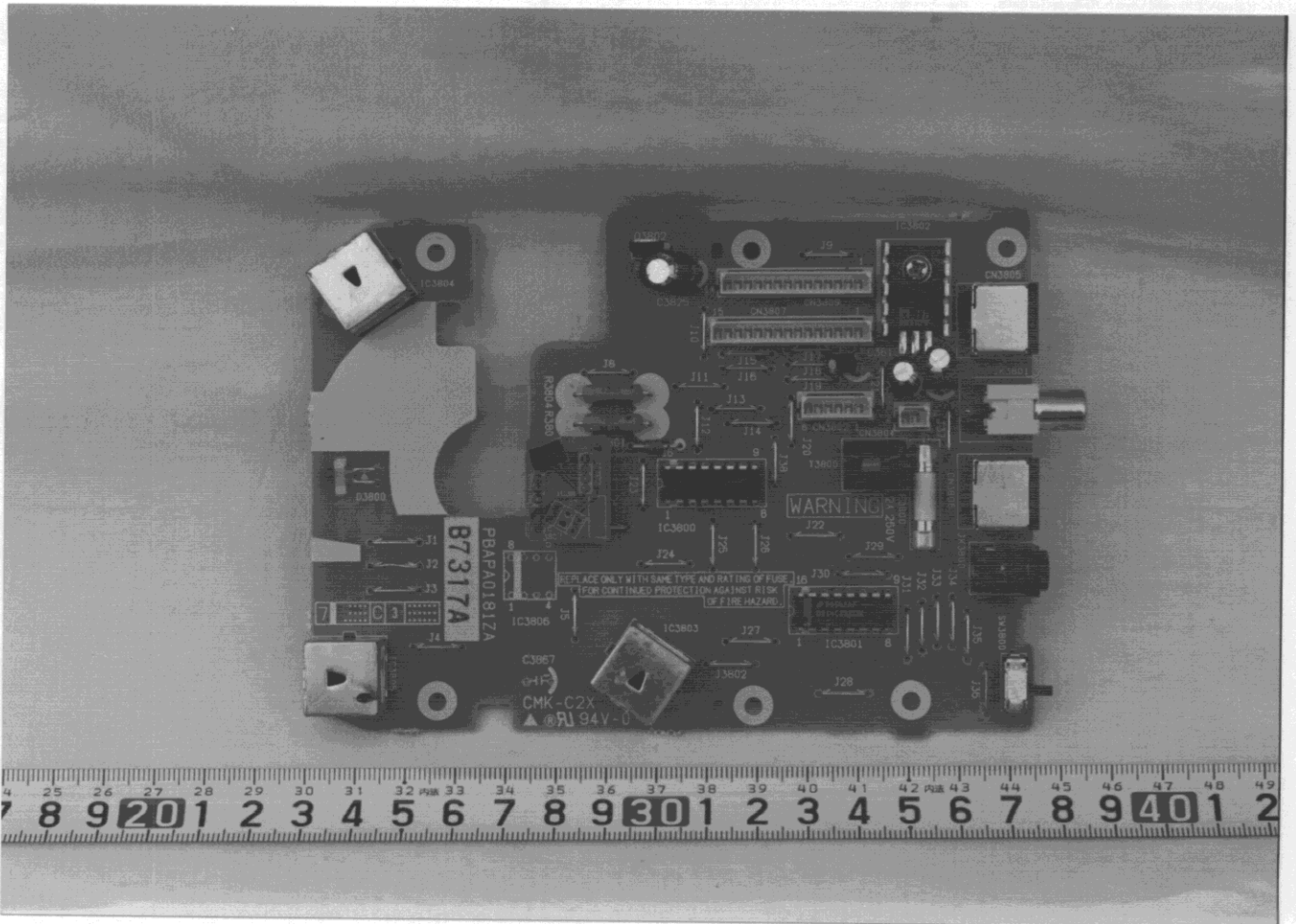


Fig. 8.16 Base Board, Foil Side

