

# **EXHIBIT C**

## EXHIBIT C

### PHOTOGRAPHS :

FIG. 1 : OVERALL FRONT VIEW

FIG. 2 : REAR VIEW

FIG. 3 : RIGHT SIDE VIEW

FIG. 4 : INTERNAL VIEW REMOVING BOTTOM COVER

FIG. 5 : DIGITAL BOARD COMPONENTS SIDE

FIG. 6 : DIGITAL BOARD SOLDERING SIDE

FIG. 7 : ANALOG BOARD COMPONENTS SIDE

FIG. 8 : ANALOG BOARD SOLDERING SIDE

FIG. 9 : POWER SUPPLY BOARD COMPONENTS SIDE

FIG. 10 : POWER SUPPLY BOARD SOLDERING SIDE

FIG.1 : OVERALL FRONT VIEW



FIG.2 : REAR VIEW



FIG.3 : RIGHT SIDE VIEW



FIG.4 : INTERNAL VIEW REMOVING BOTTOM COVER

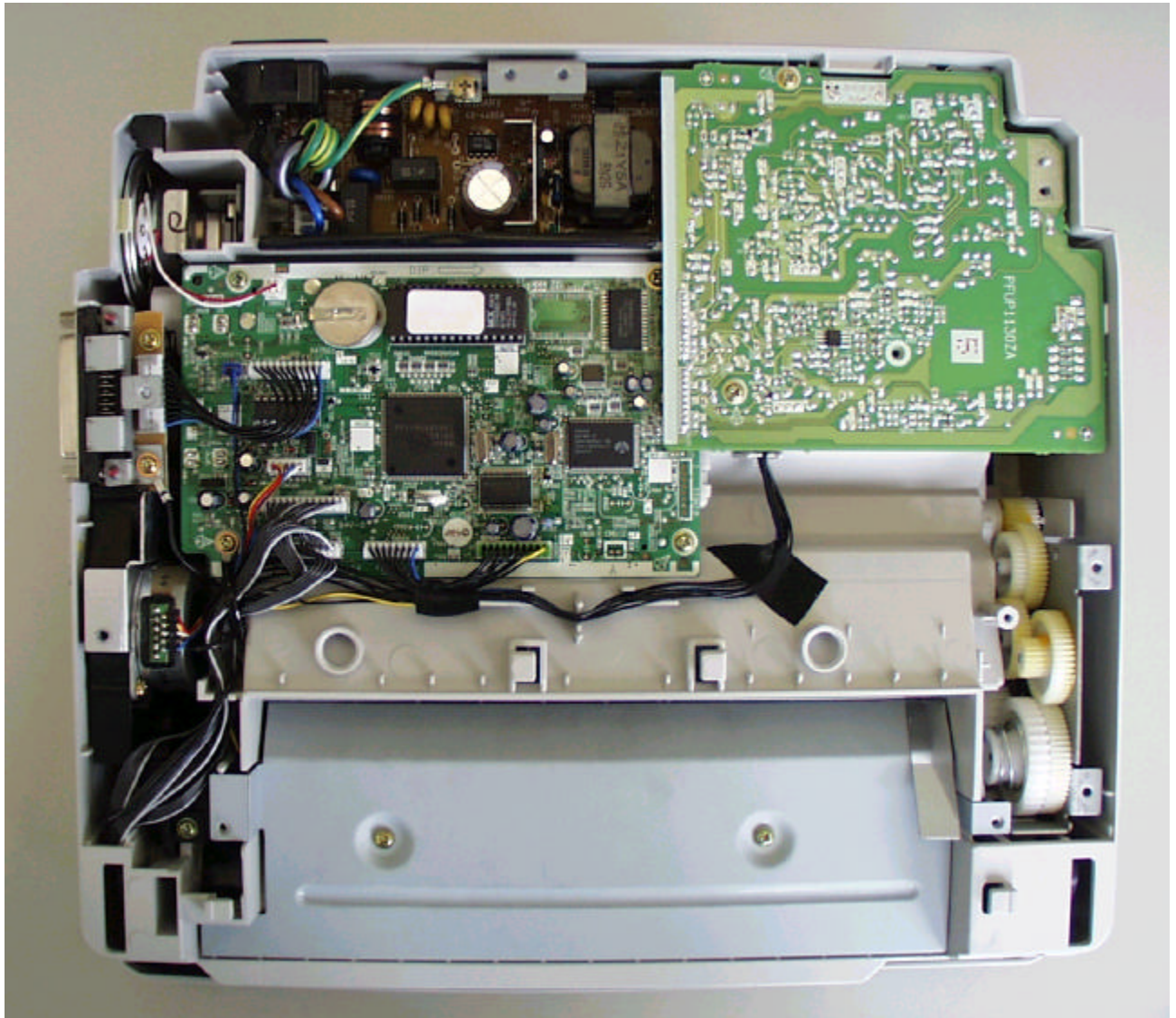
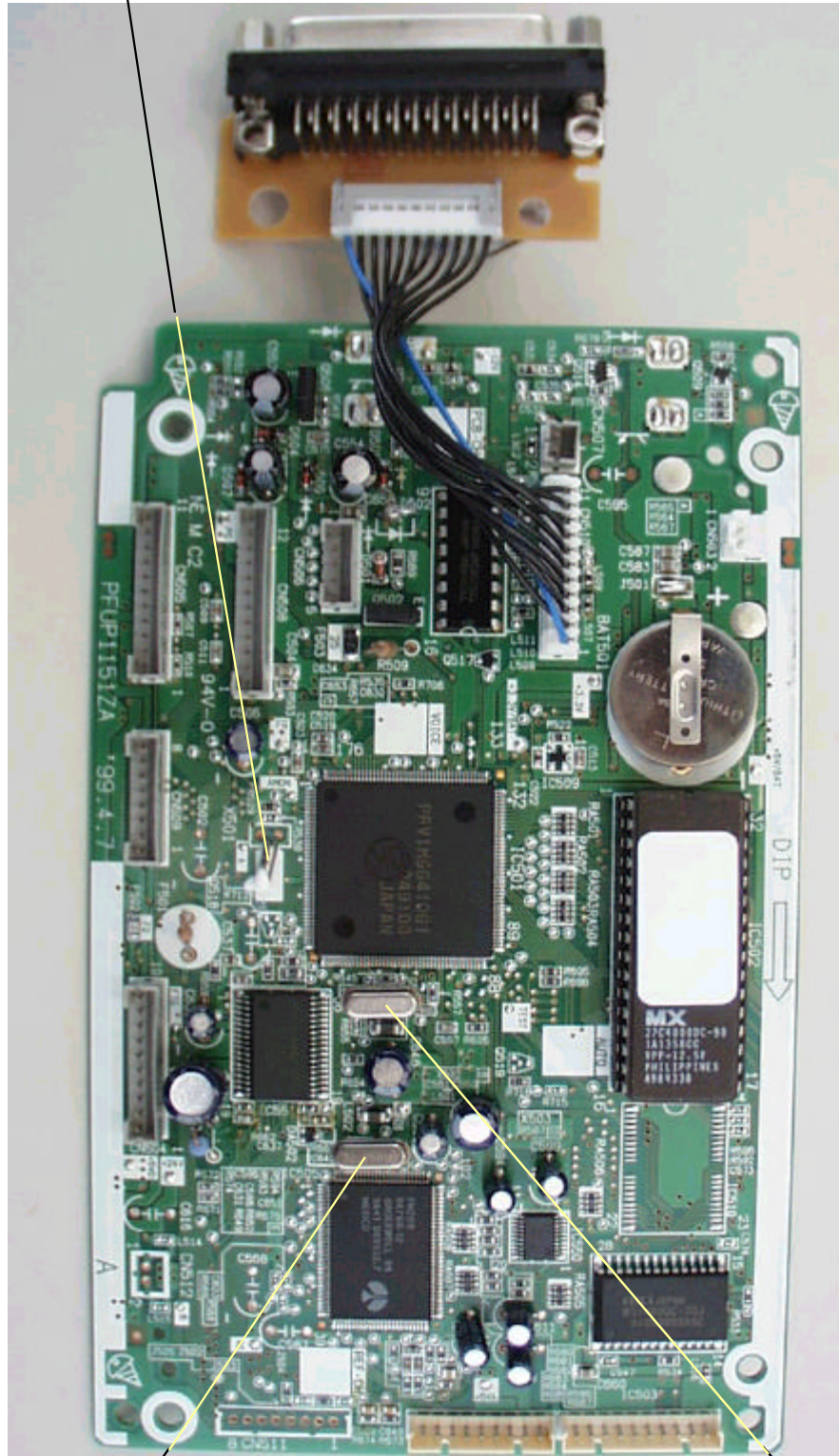


FIG.5 : DIGITAL BOARD COMPONENTS SIDE

Oscillator (X501) : 0.032768MHz



Oscillator (X503) : 32.256MHz

Oscillator (X502) : 24.00MHz

FIG.6 : DIGITAL BOARD SOLDERING SIDE

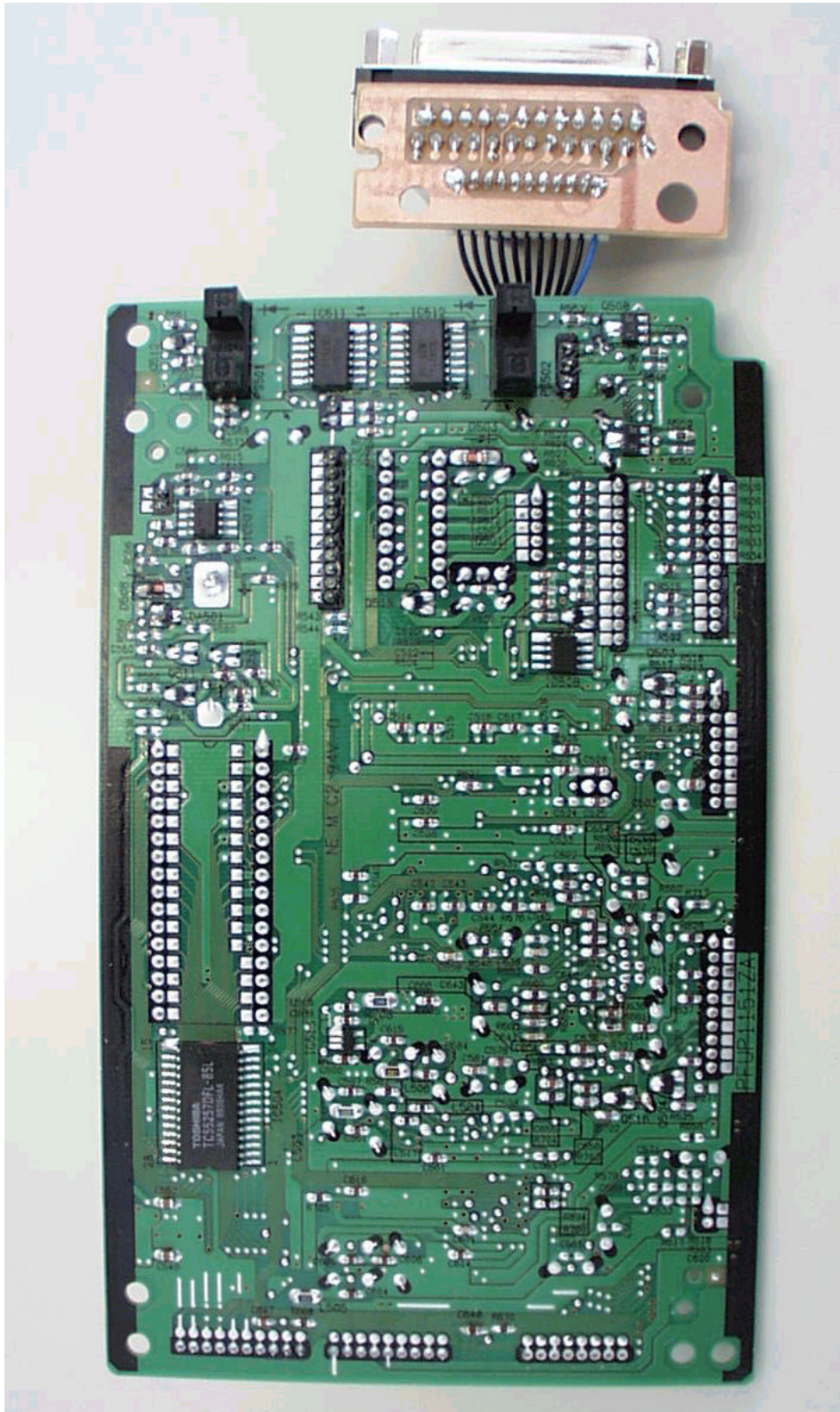


FIG.7 : ANALOG BOARD COMPONENTS SIDE

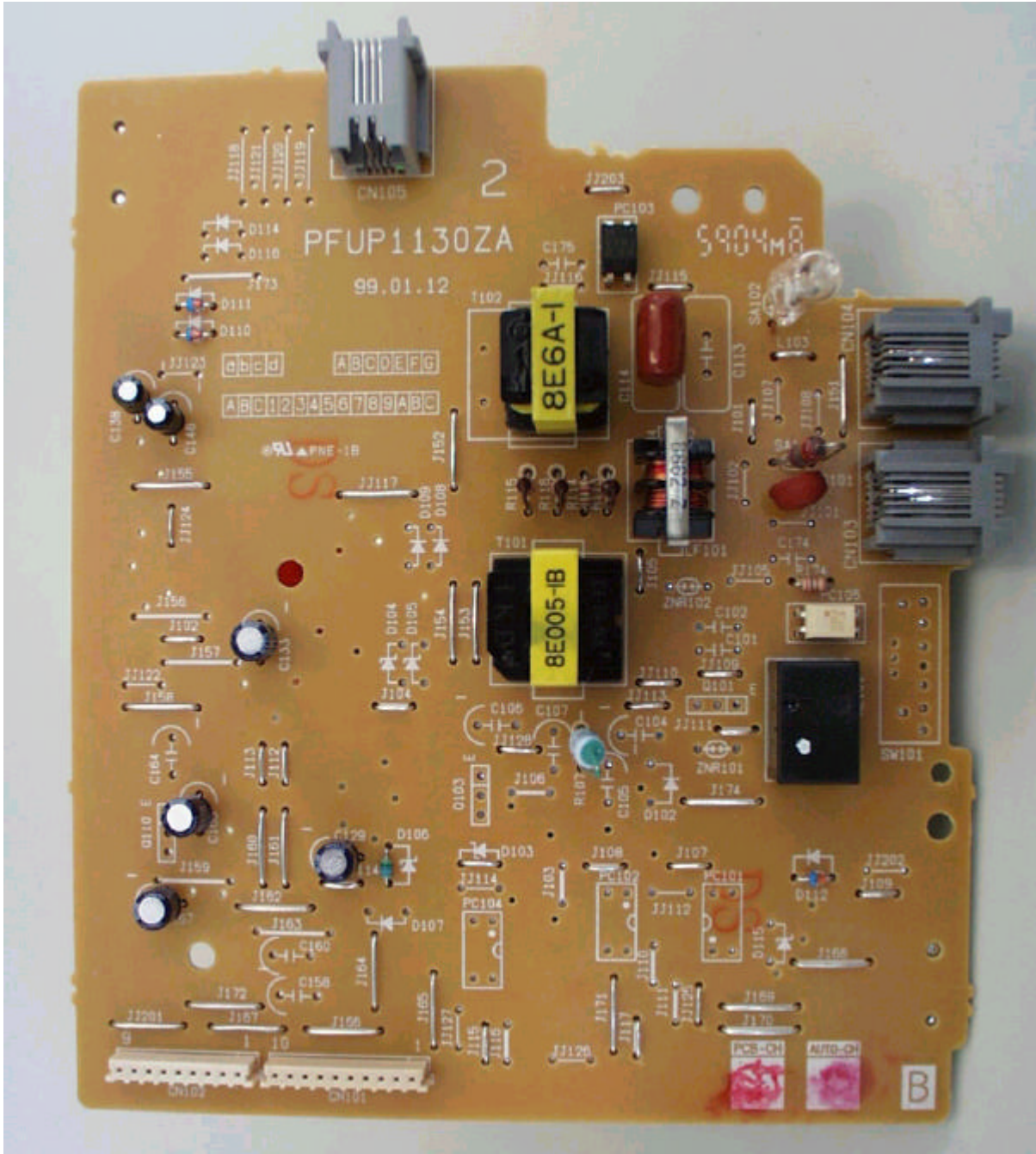


FIG.8 : ANALOG BOARD SOLDERING SIDE

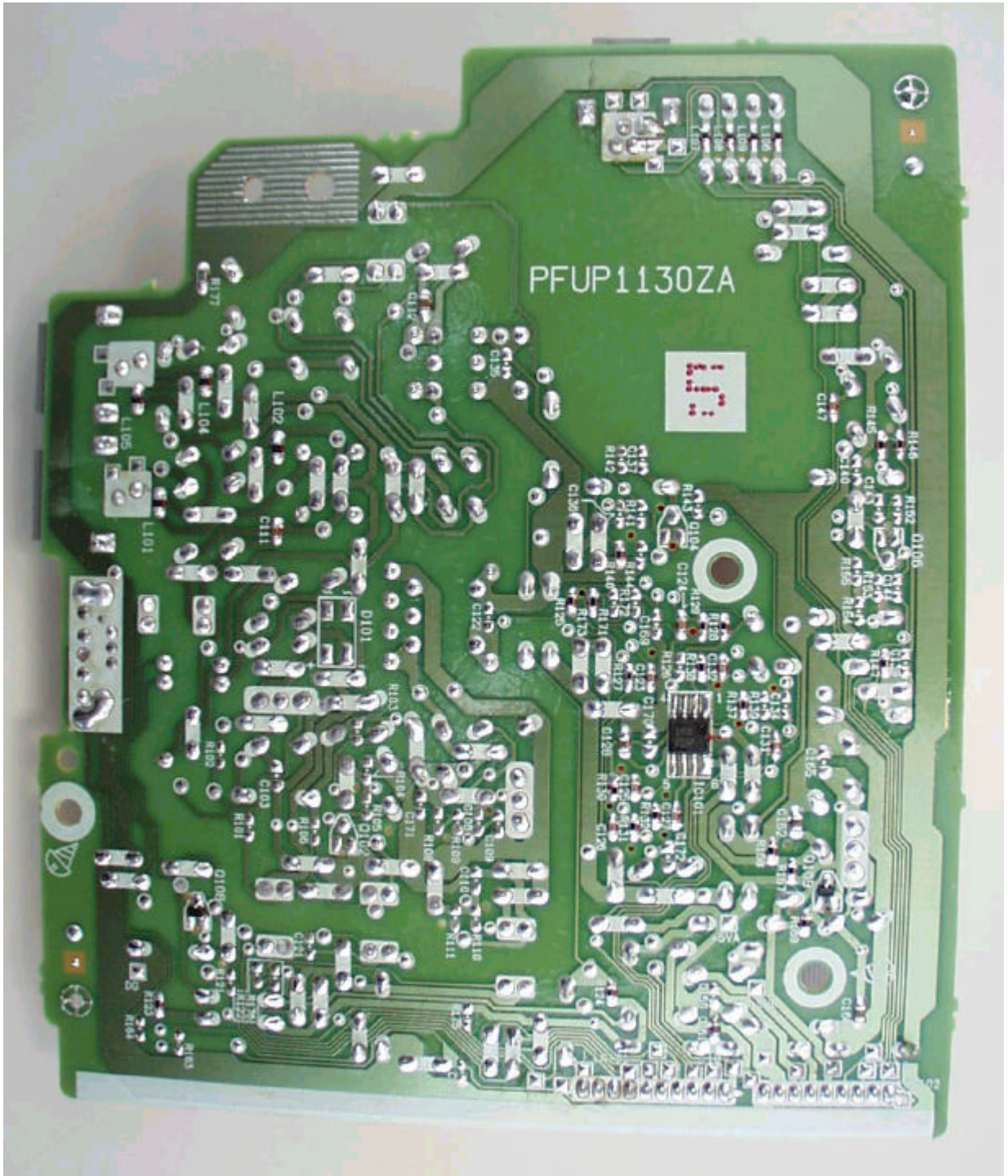




FIG.10 : POWER SUPPLY BOARD SOLDERING SIDE

