

FIG.3 : INTERNAL VIEW REMOVING MAIN CABINET

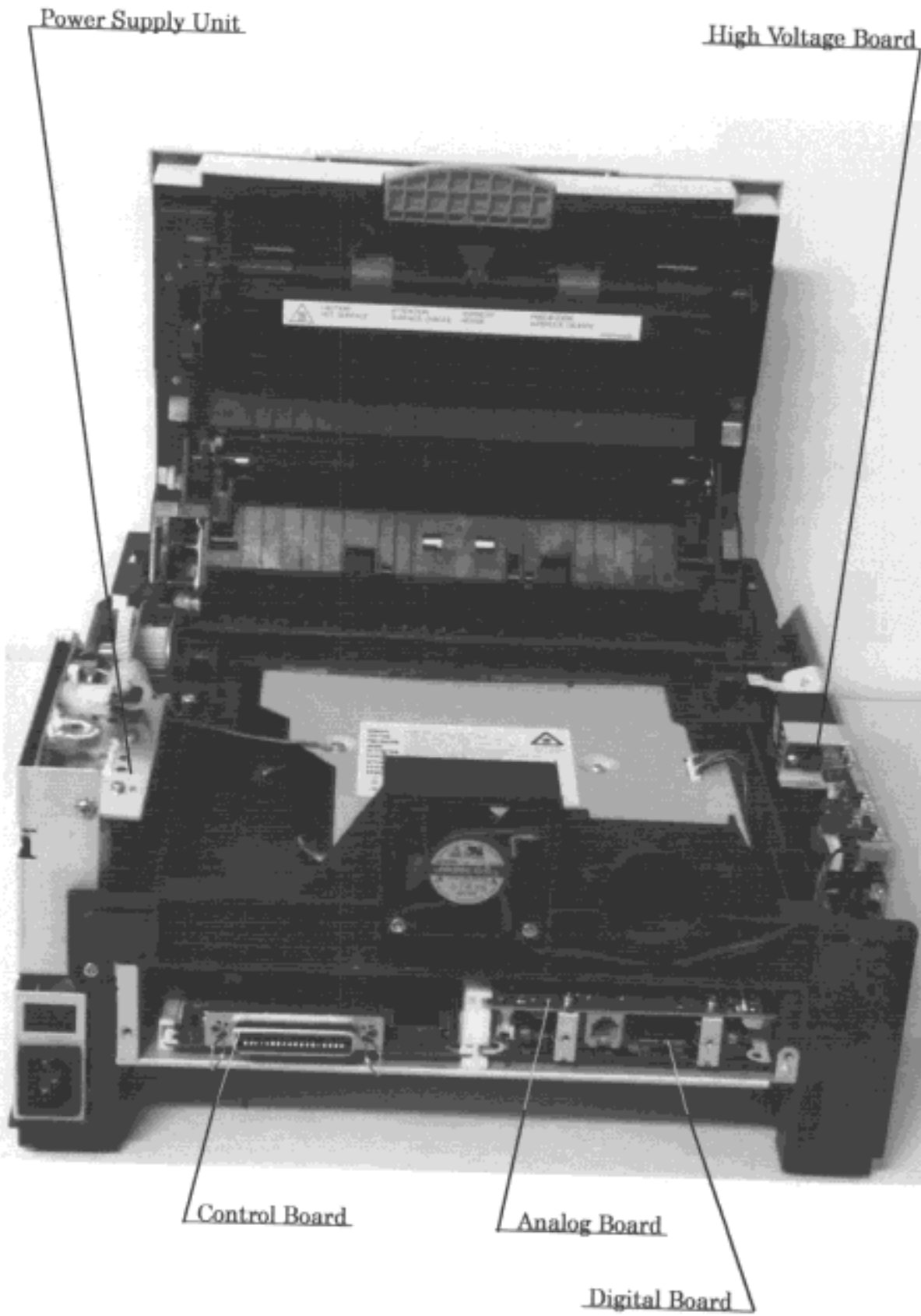


FIG.4 : INTERNAL VIEW REMOVING BOTTOM COVER

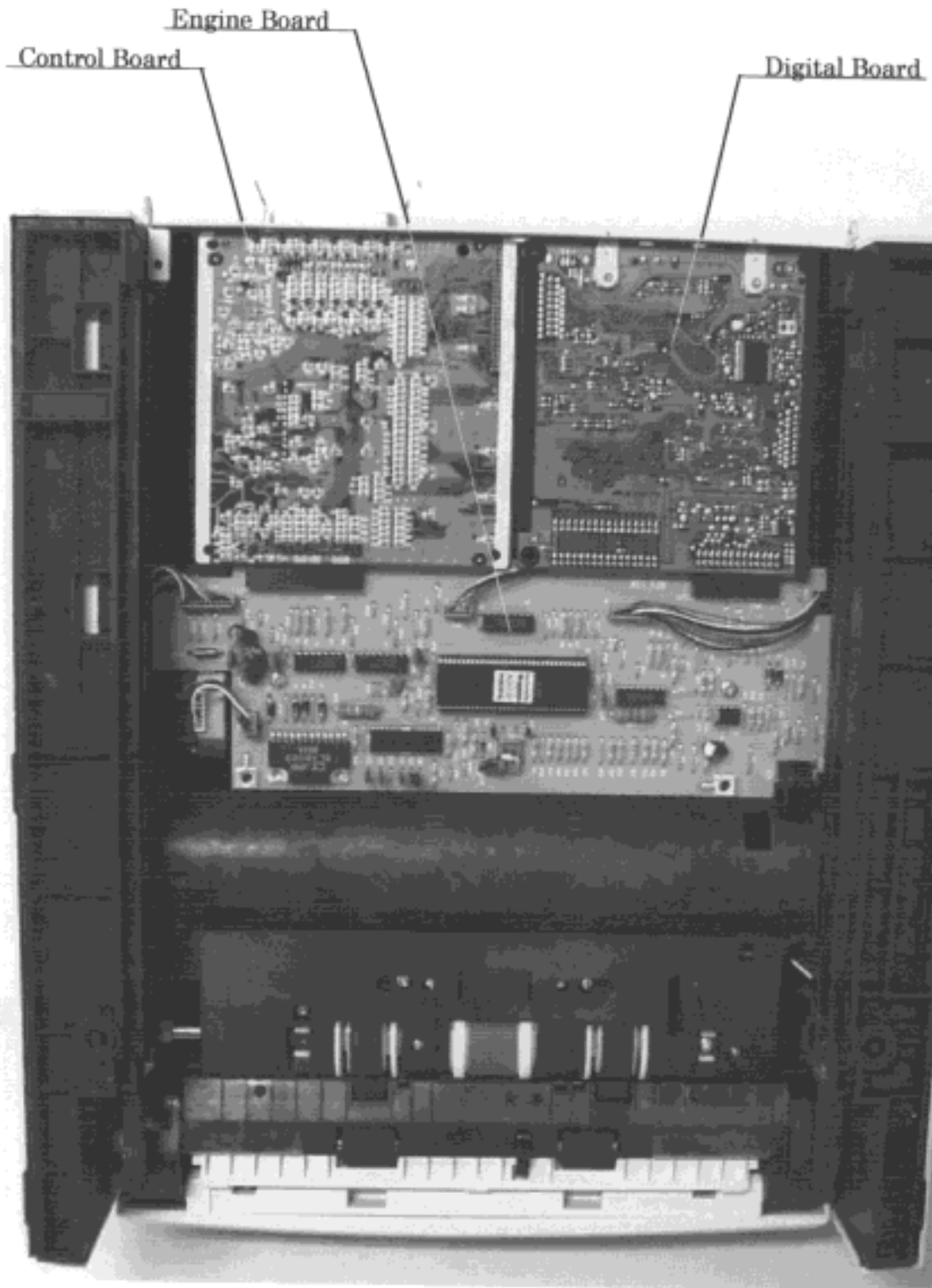


FIG.5 : ENGINE BOARD COMPONENTS SIDE

Oscillator (Y1) : 8.38MHz

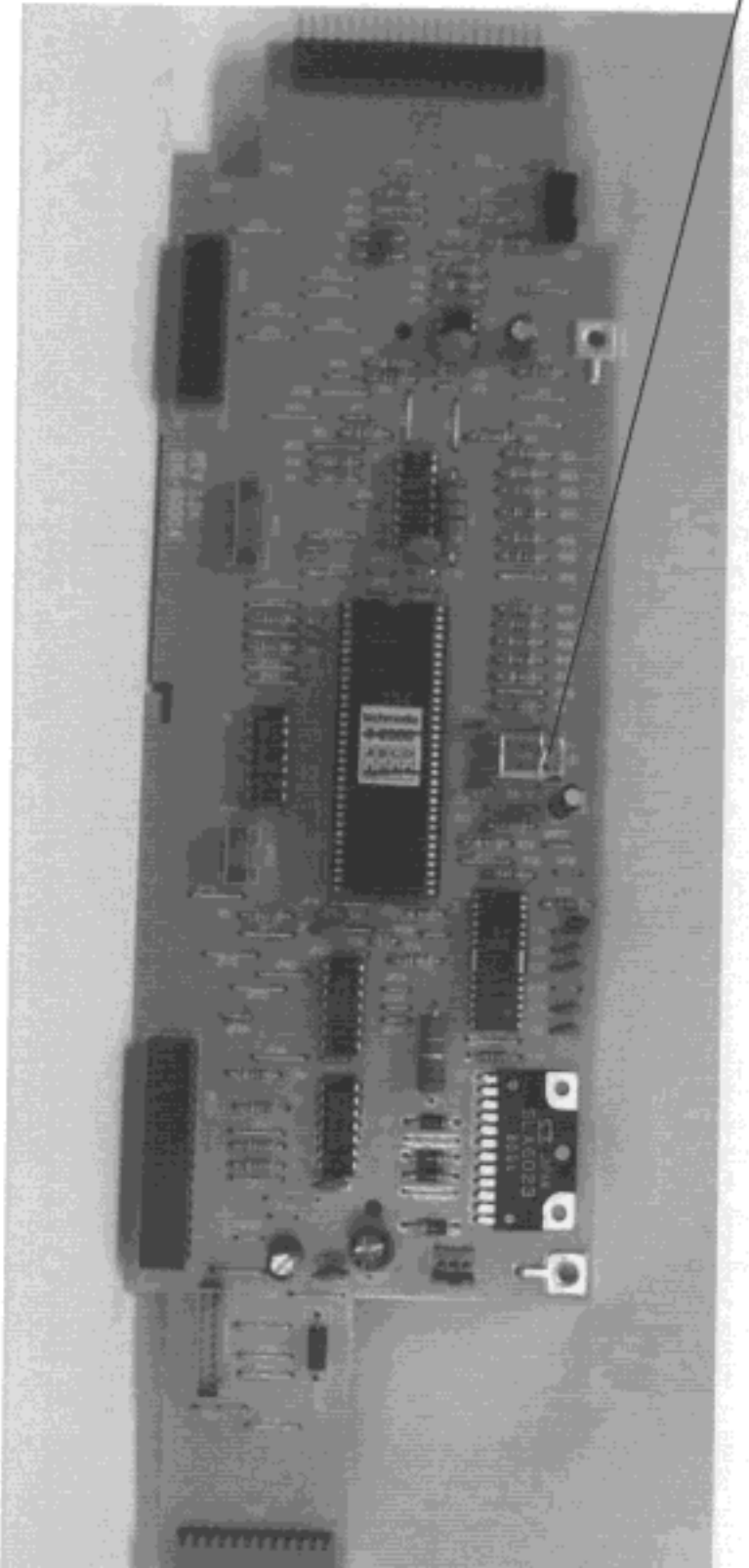


FIG.6 : ENGINE BOARD SOLDERING SIDE

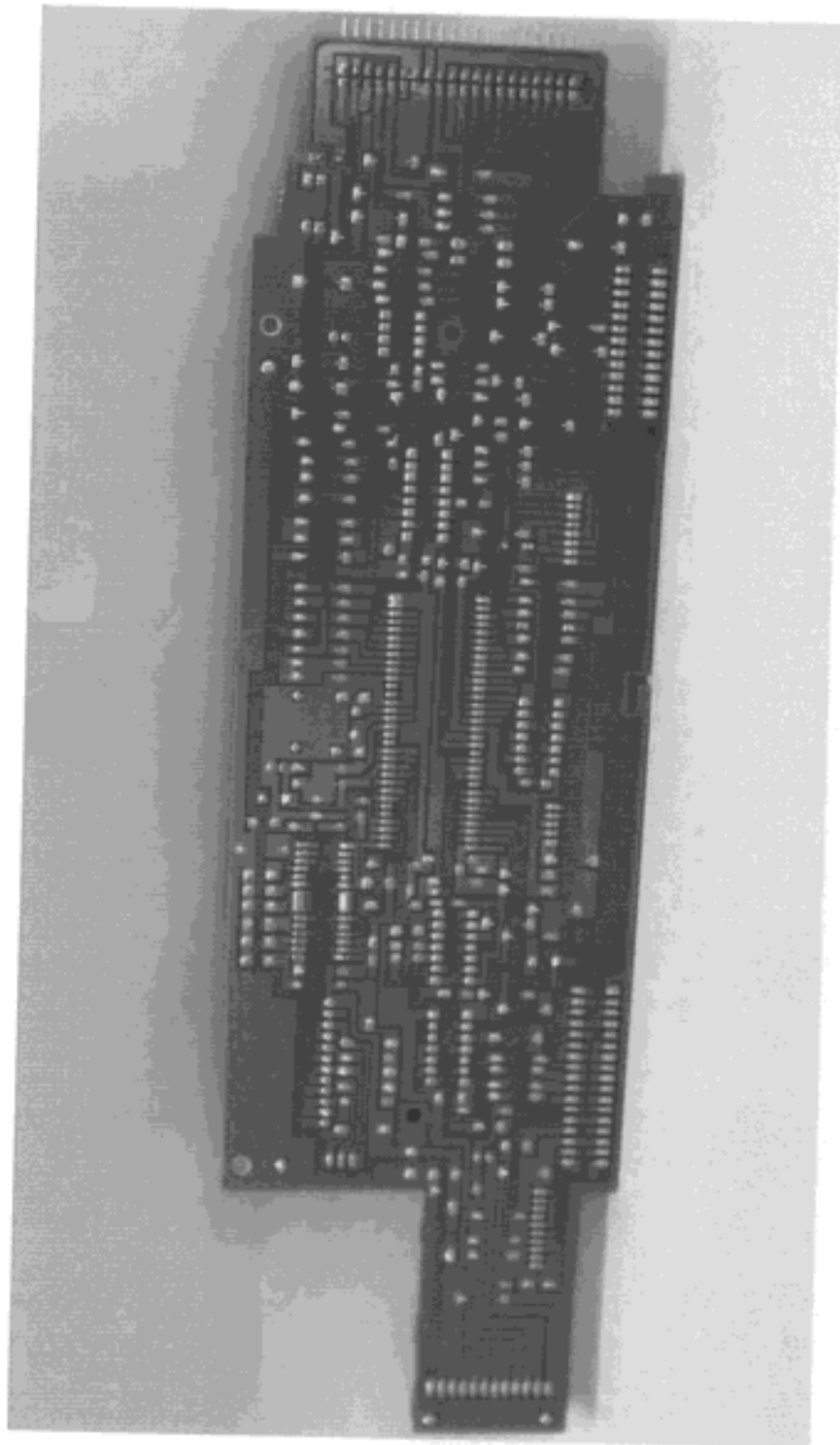


FIG.7 : CONTROL BOARD COMPONENTS SIDE

Oscillator (Y1) : 20.00MHz

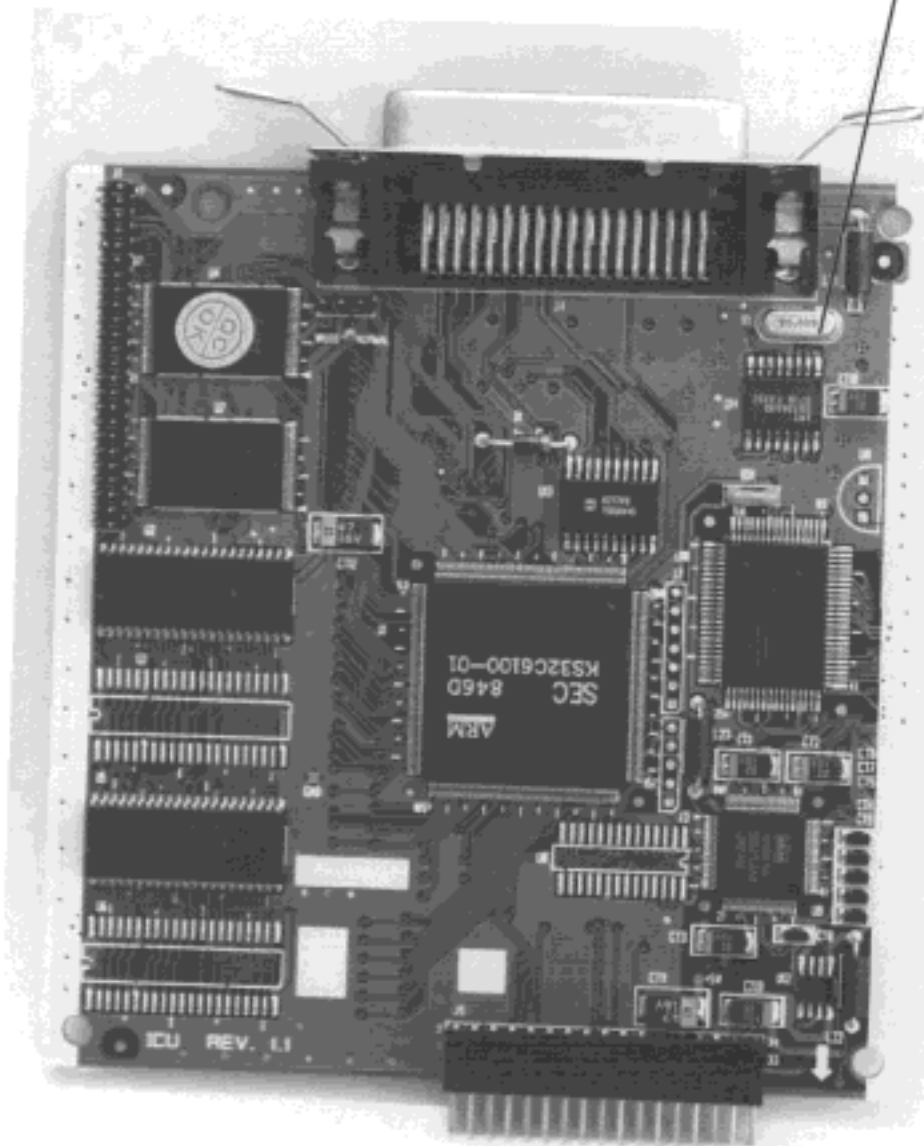


FIG.8 : CONTROL BOARD SOLDERING SIDE

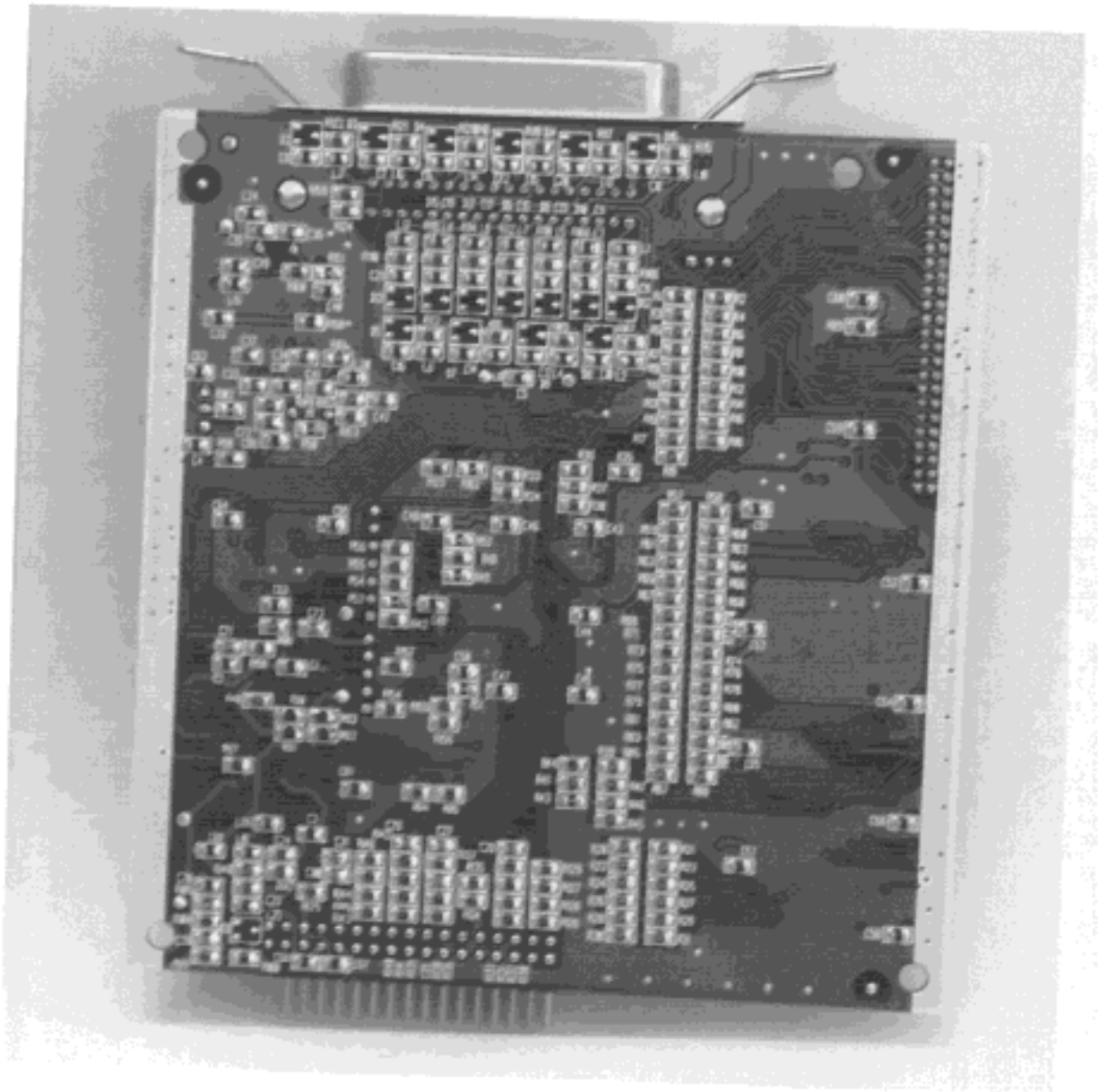


FIG.9 : DIGITAL BOARD COMPONENTS SIDE

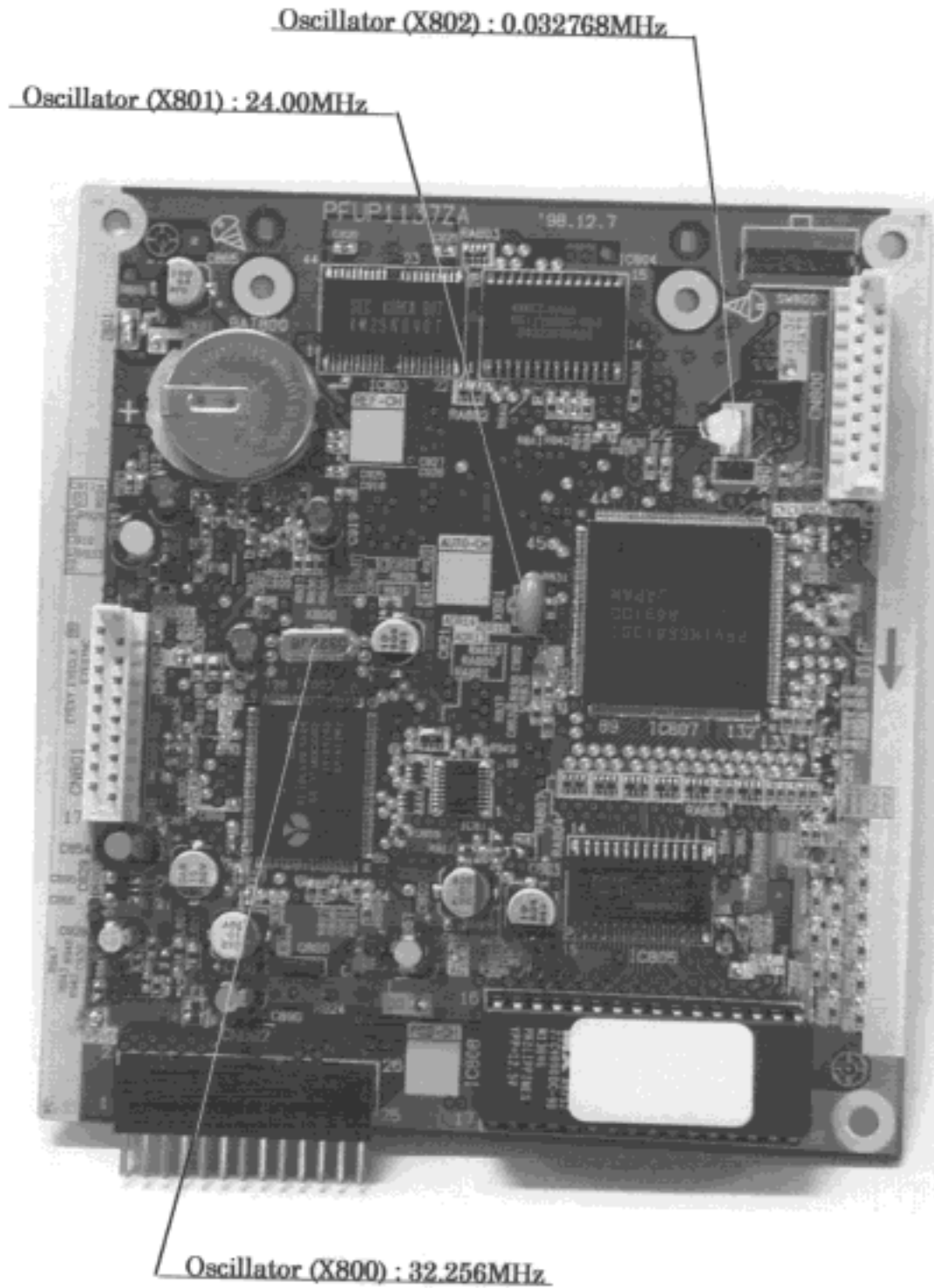


FIG.10 : DIGITAL BOARD SOLDERING SIDE

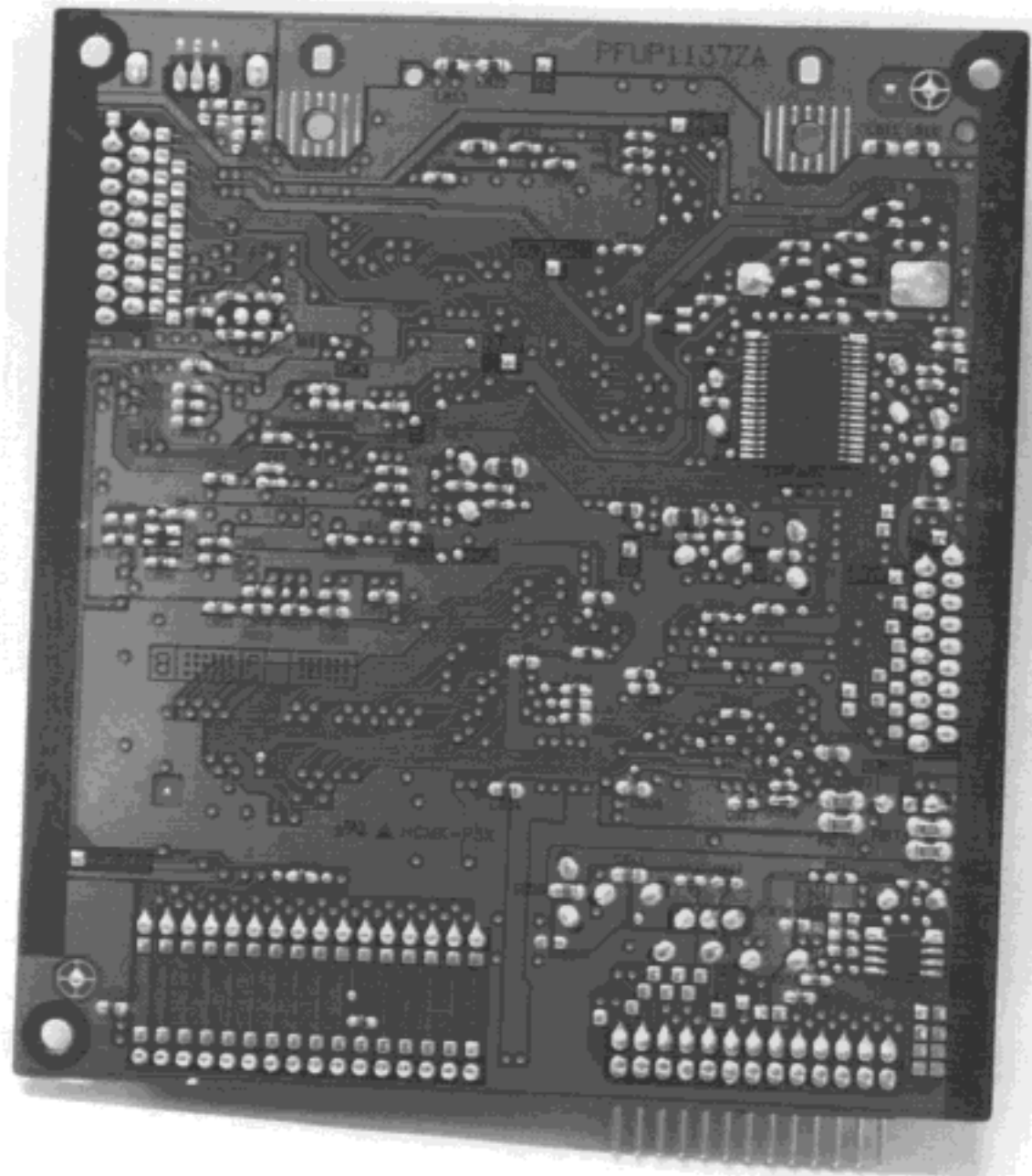


FIG.11 : ANALOG BOARD COMPONENTS SIDE

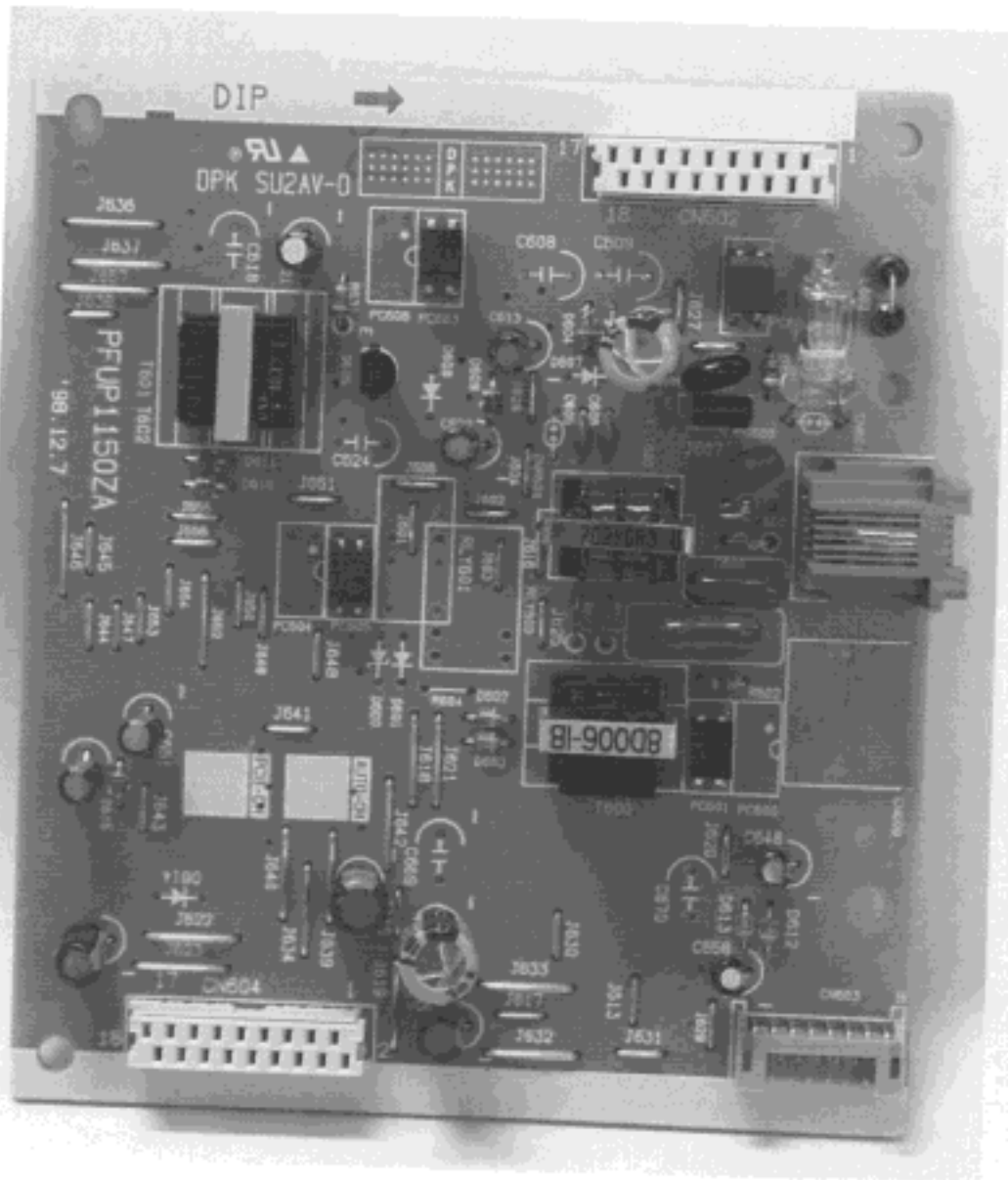


FIG.12 : ANALOG BOARD SOLDERING SIDE

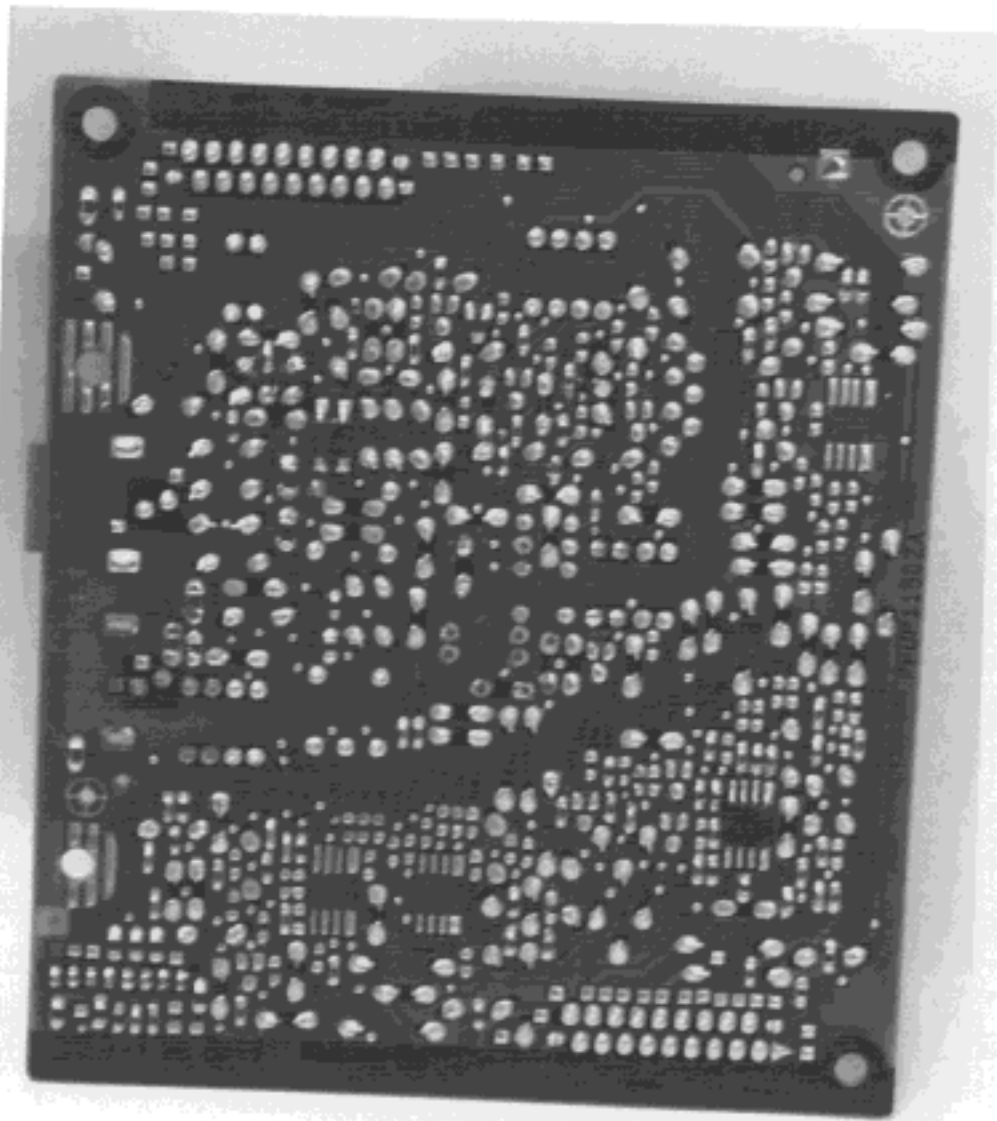


FIG.13 : HIGH VOLTAGE BOARD COMPONENTS SIDE

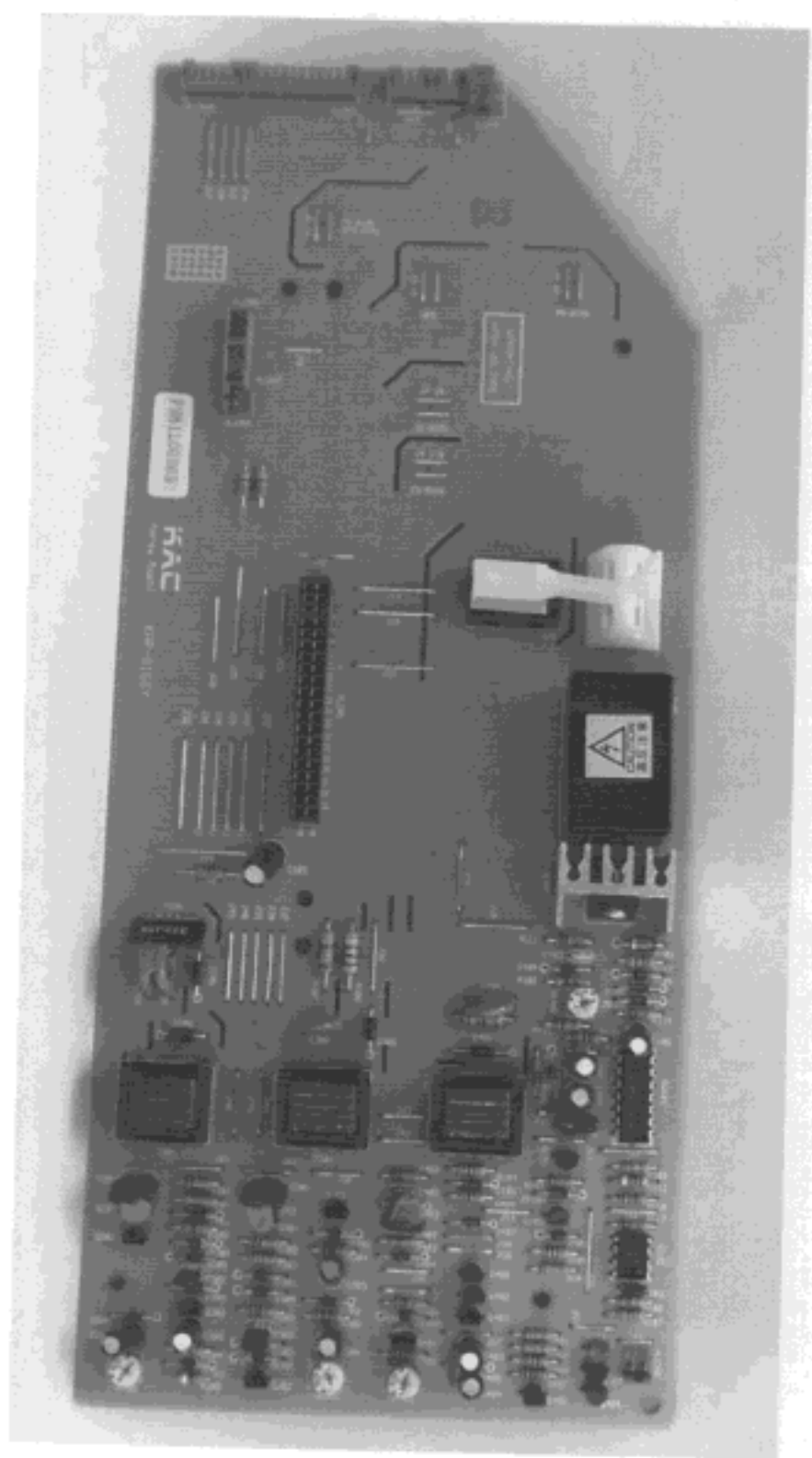


FIG.14 : HIGH VOLTAGE BOARD SOLDERING SIDE

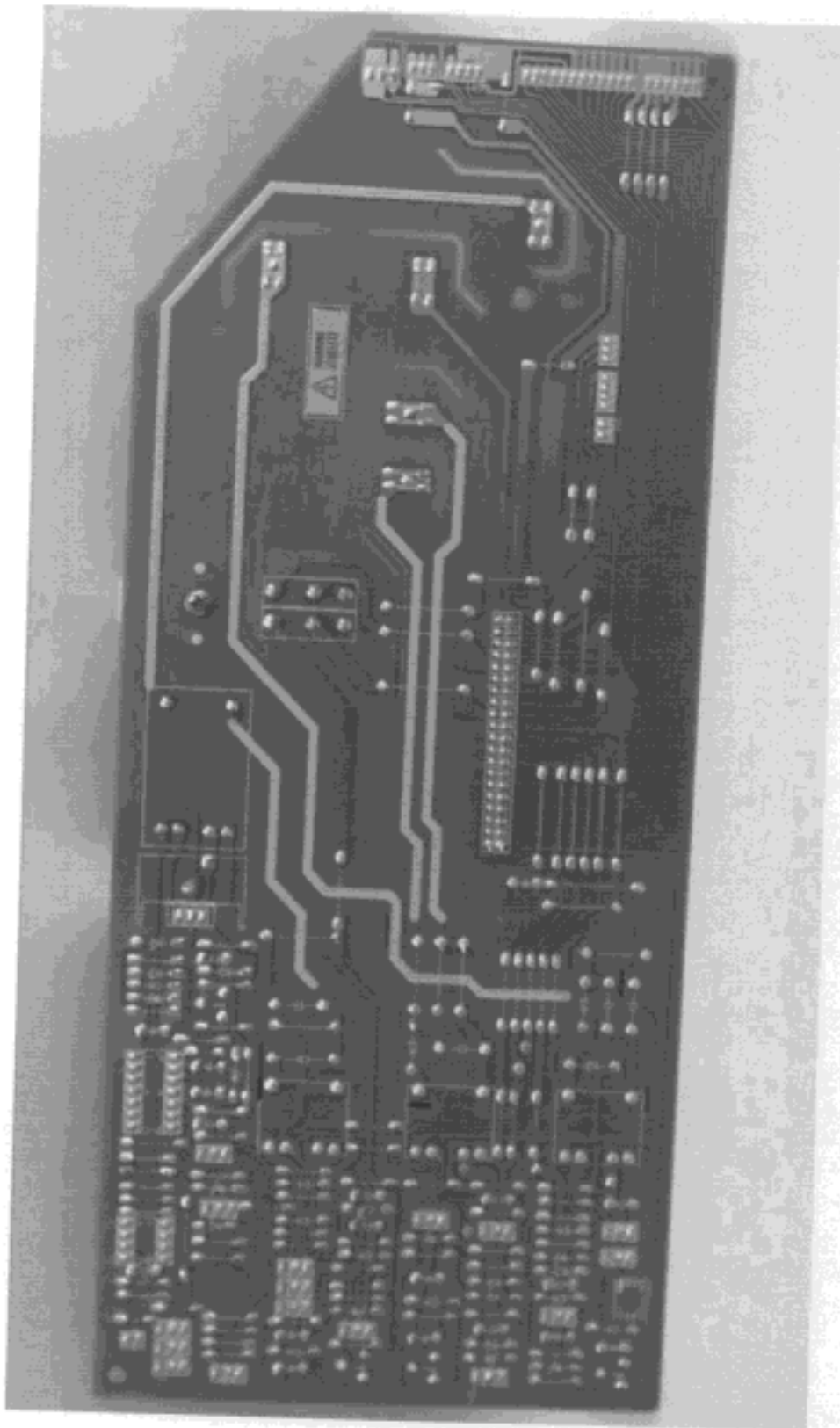


FIG.15 : POWER SUPPLY UNIT COMPONENTS SIDE

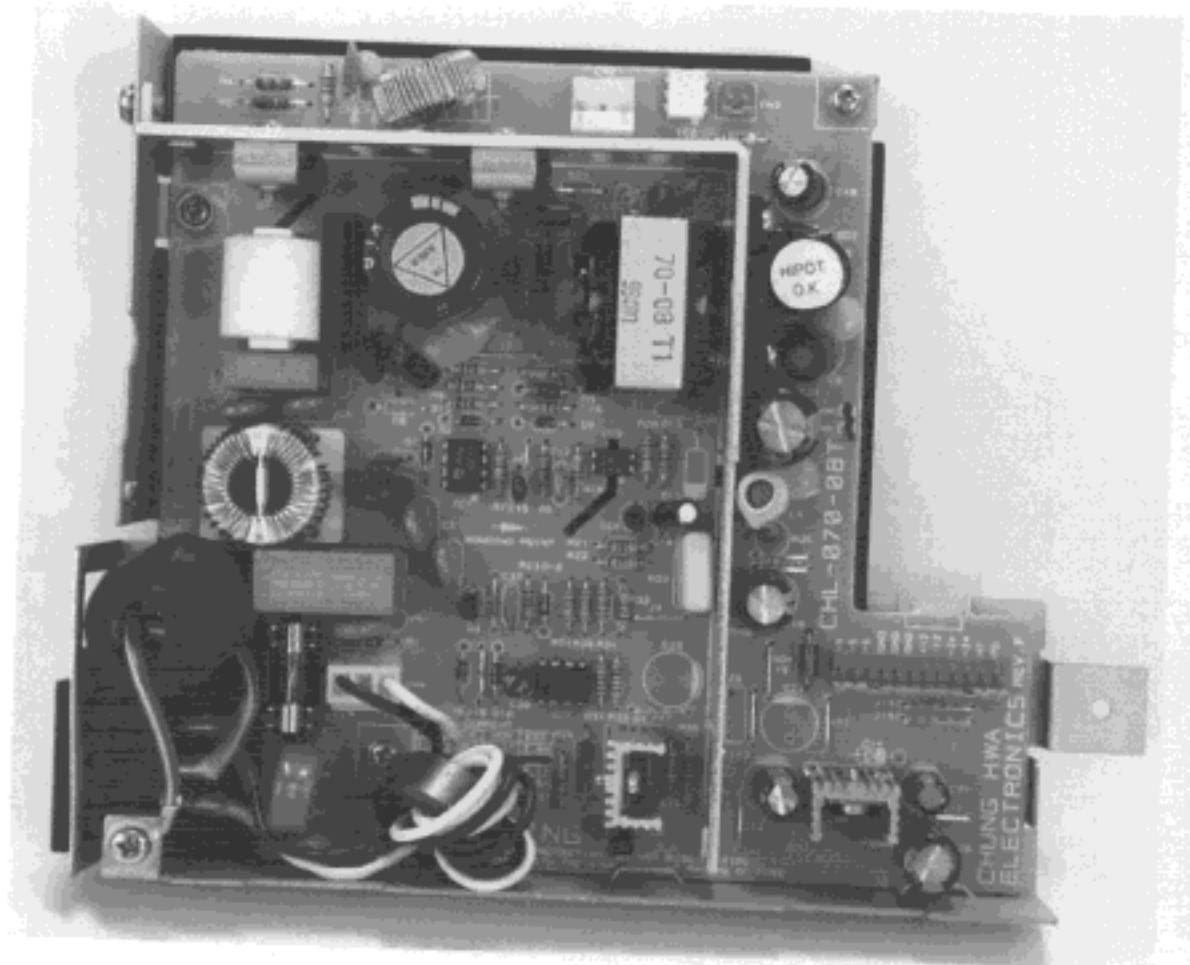


FIG.16 : POWER SUPPLY BOARD SOLDERING SIDE

