

15.1 SAR system check plots

SystemPerformanceCheck-D1800 Body 20130805

Communication System: UID 0, CW (0); Communication System Band: D1800 (1800.0 MHz);

Frequency: 1800 MHz; Duty Cycle: 1:1

Medium parameters used: $f = 1800$ MHz; $\sigma = 1.456$ S/m; $\epsilon_r = 51.168$; $\rho = 1000$ kg/m³

Phantom section: Flat Section

Measurement Standard: DASY5 (IEEE/IEC/ANSI C63.19-2007)

DASY5 Configuration

Probe: EX3DV4 - SN3917; ConvF(7.73, 7.73, 7.73); Calibrated: 2013/05/14;

Sensor-Surface: 2mm (Mechanical Surface Detection)

Electronics: DAE4 Sn1369; Calibrated: 2013/05/13

Phantom: ELI v5.0 SN1203; Type: QDOVA002AA; Serial: TP:1203

Measurement SW: DASY52, Version 52.8 (7);

Area Scan 2 (61x61x1): Interpolated grid: $dx=1.500$ mm, $dy=1.500$ mm

Maximum value of SAR (interpolated) = 13.0 W/kg

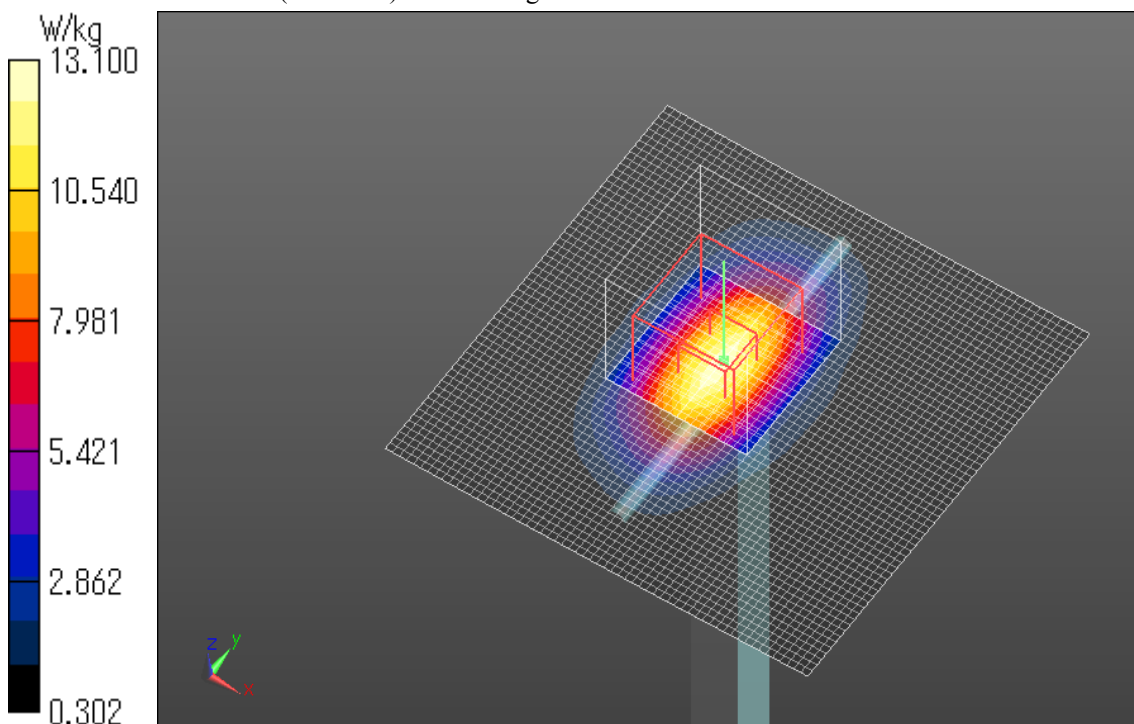
Zoom Scan (7x7x7)/Cube 0: Measurement grid: $dx=5$ mm, $dy=5$ mm, $dz=5$ mm

Reference Value = 97.429 V/m; Power Drift = 0.02 dB

Peak SAR (extrapolated) = 16.4 W/kg

SAR(1 g) = 9.33 W/kg; SAR(10 g) = 4.99 W/kg

Maximum value of SAR (measured) = 13.1 W/kg



SystemPerformanceCheck-D900 Body 20130805

Communication System: UID 0, CW (0); Communication System Band: D900 (900.0 MHz); Frequency: 900 MHz; Duty Cycle: 1:1

Medium parameters used: $f = 900$ MHz; $\sigma = 1.007$ S/m; $\epsilon_r = 52.665$; $\rho = 1000$ kg/m³

Phantom section: Flat Section

Measurement Standard: DASYS5 (IEEE/IEC/ANSI C63.19-2007)

DASY5 Configuration

Probe: EX3DV4 - SN3922; ConvF(10.02, 10.02, 10.02); Calibrated: 2013/06/04;

Sensor-Surface: 2mm (Mechanical Surface Detection)

Electronics: DAE4 Sn1372; Calibrated: 2013/06/03

Phantom: ELI v5.0 TP1207; Type: QDOVA002AA;

Measurement SW: DASYS2, Version 52.8 (7);

Area Scan (61x61x1): Interpolated grid: dx=1.500 mm, dy=1.500 mm

Maximum value of SAR (interpolated) = 3.16 W/kg

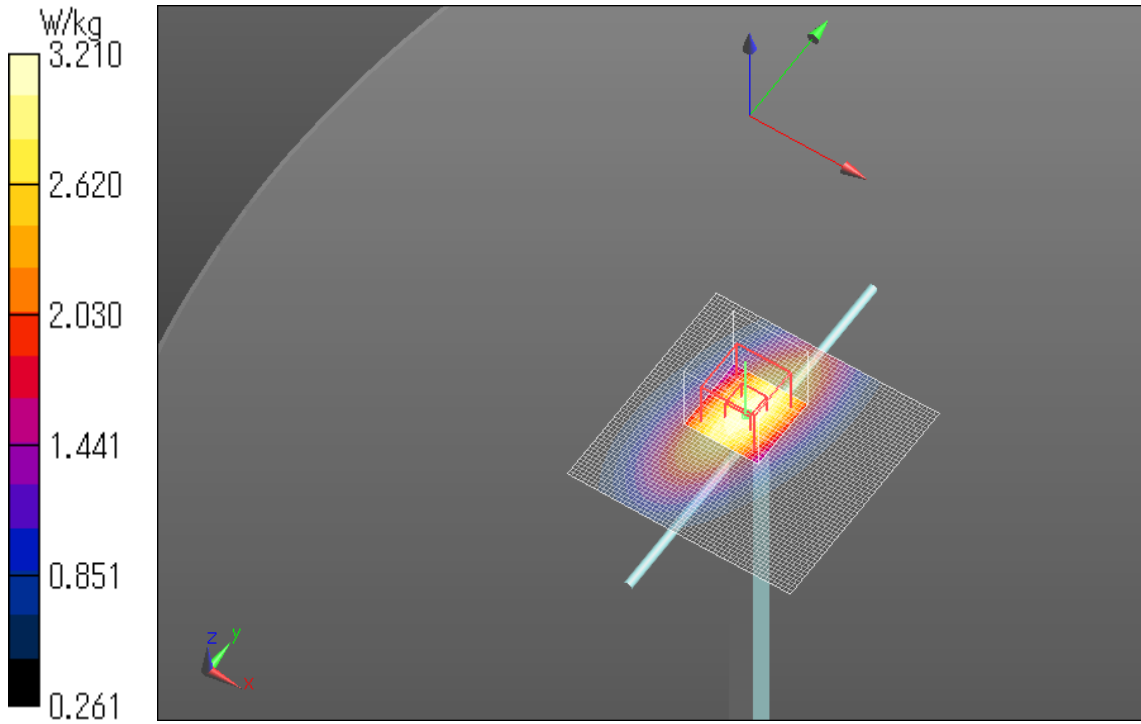
Zoom Scan (7x7x7)/Cube 0: Measurement grid: dx=5mm, dy=5mm, dz=5mm

Reference Value = 55.287 V/m; Power Drift = 0.06 dB

Peak SAR (extrapolated) = 3.81 W/kg

SAR(1 g) = 2.52 W/kg; SAR(10 g) = 1.64 W/kg

Maximum value of SAR (measured) = 3.21 W/kg



SystemPerformanceCheck-D900 Body 20130806

Communication System: UID 0, CW (0); Communication System Band: D900 (900.0 MHz); Frequency: 900 MHz; Duty Cycle: 1:1

Medium parameters used: $f = 900$ MHz; $\sigma = 1.028$ S/m; $\epsilon_r = 54.175$; $\rho = 1000$ kg/m³

Phantom section: Flat Section

Measurement Standard: DASYS5 (IEEE/IEC/ANSI C63.19-2007)

DASY5 Configuration

Probe: EX3DV4 - SN3922; ConvF(10.02, 10.02, 10.02); Calibrated: 2013/06/04;

Sensor-Surface: 2mm (Mechanical Surface Detection (Locations From Previous Scan Used)),

Sensor-Surface: 2mm (Mechanical Surface Detection)

Electronics: DAE4 Sn1372; Calibrated: 2013/06/03

Phantom: ELI v5.0 TP1207; Type: QDOVA002AA;

Measurement SW: DASYS2, Version 52.8 (7);

Area Scan (61x81x1): Interpolated grid: dx=1.500 mm, dy=1.500 mm

Maximum value of SAR (interpolated) = 3.15 W/kg

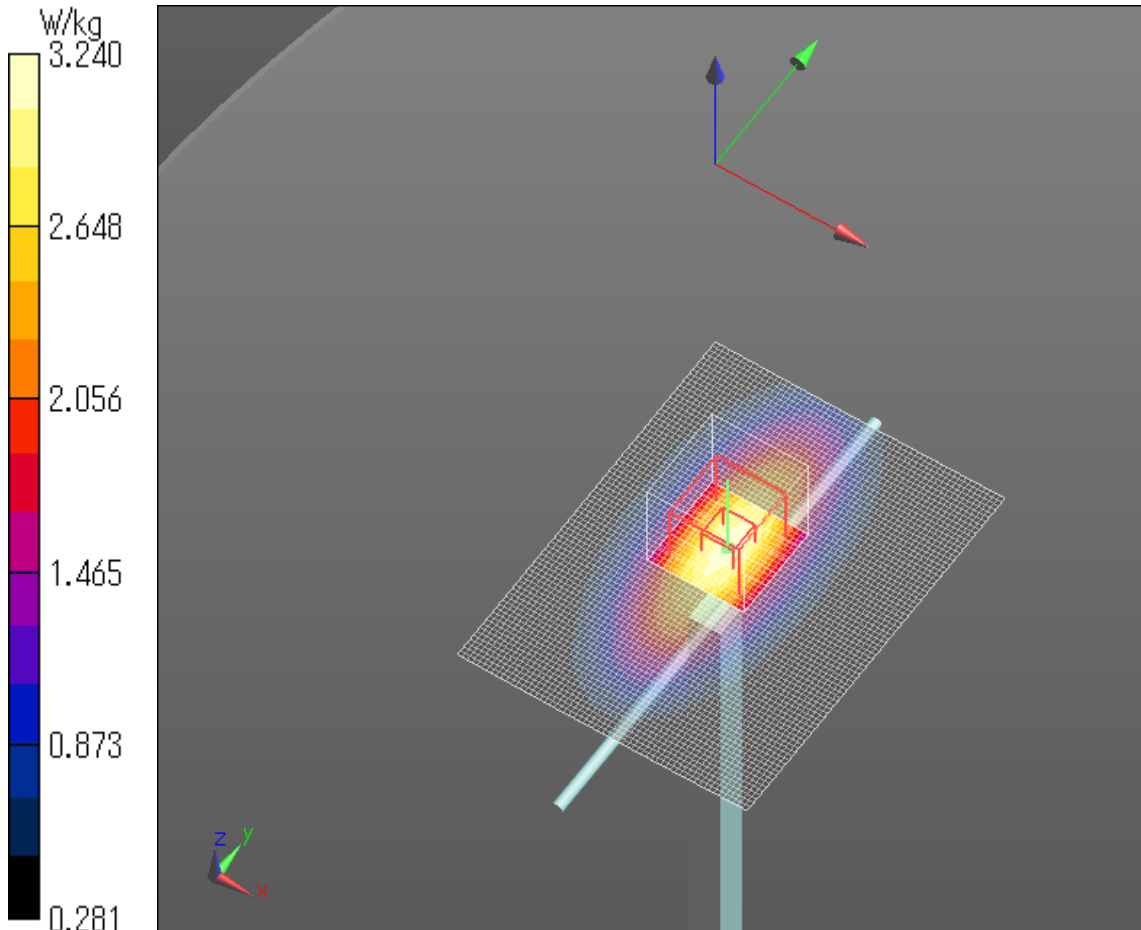
Zoom Scan (7x7x7)/Cube 0: Measurement grid: dx=5mm, dy=5mm, dz=5mm

Reference Value = 56.104 V/m; Power Drift = 0.02 dB

Peak SAR (extrapolated) = 3.86 W/kg

SAR(1 g) = 2.52 W/kg; SAR(10 g) = 1.64 W/kg

Maximum value of SAR (measured) = 3.24 W/kg

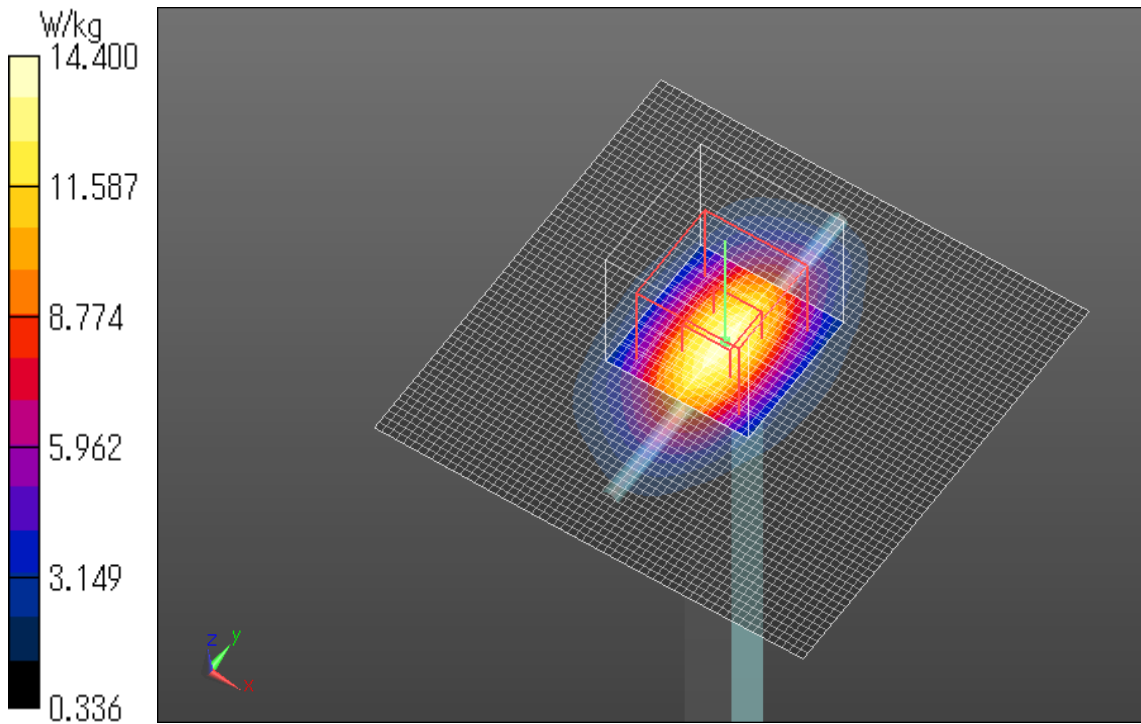


SystemPerformanceCheck-D1800 Body 20130806

Communication System: UID 0, CW (0); Communication System Band: D1800 (1800.0 MHz);
Frequency: 1800 MHz; Duty Cycle: 1:1
Medium parameters used: $f = 1800$ MHz; $\sigma = 1.54$ S/m; $\epsilon_r = 51.847$; $\rho = 1000$ kg/m³
Phantom section: Flat Section
Measurement Standard: DASY5 (IEEE/IEC/ANSI C63.19-2007)
DASY5 Configuration
Probe: EX3DV4 - SN3917; ConvF(7.73, 7.73, 7.73); Calibrated: 2013/05/14;
Sensor-Surface: 2mm (Mechanical Surface Detection)
Electronics: DAE4 Sn1369; Calibrated: 2013/05/13
Phantom: ELI v5.0 SN1203; Type: QDOVA002AA; Serial: TP:1203
Measurement SW: DASY52, Version 52.8 (7);

Area Scan 2 (61x61x1): Interpolated grid: dx=1.500 mm, dy=1.500 mm
Maximum value of SAR (interpolated) = 14.3 W/kg

Zoom Scan (7x7x7)/Cube 0: Measurement grid: dx=5mm, dy=5mm, dz=5mm
Reference Value = 99.180 V/m; Power Drift = -0.04 dB
Peak SAR (extrapolated) = 17.9 W/kg
SAR(1 g) = 10.2 W/kg; SAR(10 g) = 5.43 W/kg
Maximum value of SAR (measured) = 14.4 W/kg



SystemPerformanceCheck-D900 Body 20130807

Communication System: UID 0, CW (0); Communication System Band: D900 (900.0 MHz); Frequency: 900 MHz; Duty Cycle: 1:1

Medium parameters used: $f = 900$ MHz; $\sigma = 1.032$ S/m; $\epsilon_r = 54.006$; $\rho = 1000$ kg/m³

Phantom section: Flat Section

Measurement Standard: DASYS5 (IEEE/IEC/ANSI C63.19-2007)

DASY5 Configuration

Probe: EX3DV4 - SN3917; ConvF(9.75, 9.75, 9.75); Calibrated: 2013/05/14;

Sensor-Surface: 2mm (Mechanical Surface Detection)

Electronics: DAE4 Sn1369; Calibrated: 2013/05/13

Phantom: ELI v5.0 SN1203; Type: QDOVA002AA; Serial: TP:1203

Measurement SW: DASYS2, Version 52.8 (7);

Area Scan (61x61x1): Interpolated grid: dx=1.500 mm, dy=1.500 mm

Maximum value of SAR (interpolated) = 3.36 W/kg

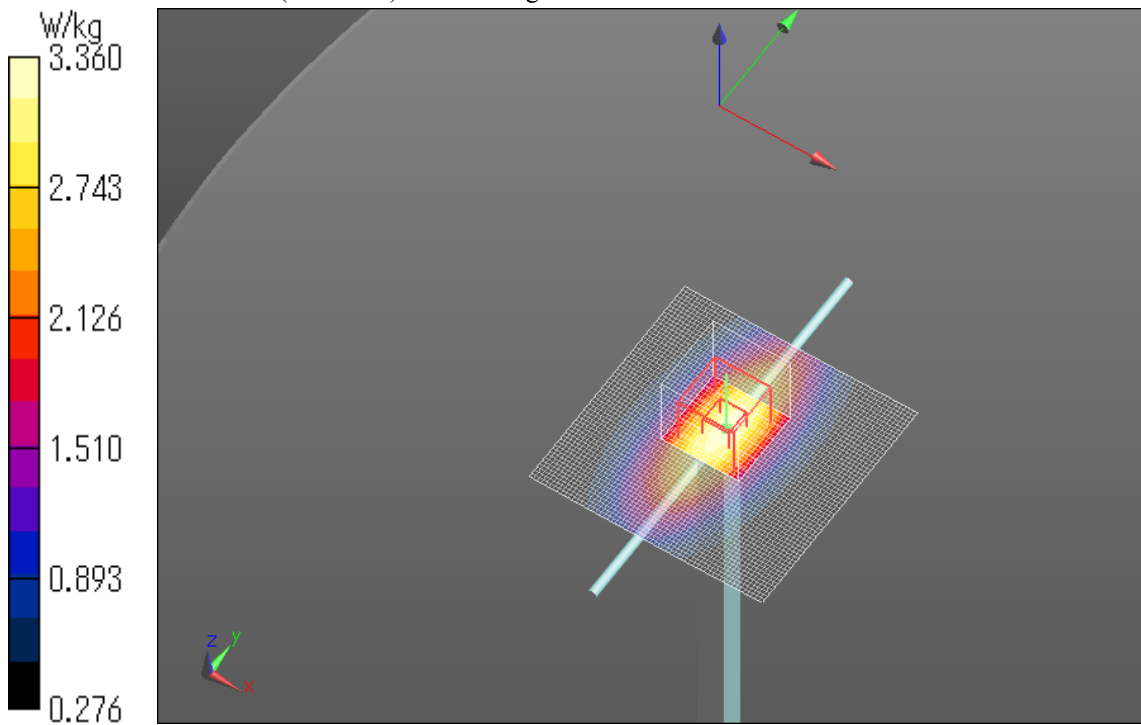
Zoom Scan (7x7x7)/Cube 0: Measurement grid: dx=5mm, dy=5mm, dz=5mm

Reference Value = 57.739 V/m; Power Drift = -0.01 dB

Peak SAR (extrapolated) = 4.01 W/kg

SAR(1 g) = 2.62 W/kg; SAR(10 g) = 1.69 W/kg

Maximum value of SAR (measured) = 3.36 W/kg



SystemPerformanceCheck-D900 Body 20130807

Communication System: UID 0, CW; Communication System Band: D900 (900.0 MHz); Frequency: 900 MHz; Duty Cycle: 1:1

Medium parameters used: $f = 900$ MHz; $\sigma = 1.065$ S/m; $\epsilon_r = 56.519$; $\rho = 1000$ kg/m³

Phantom section: Flat Section

Measurement Standard: DASYS5 (IEEE/IEC/ANSI C63.19-2007)

DASY5 Configuration

Probe: EX3DV4 - SN3922; ConvF(10.02, 10.02, 10.02); Calibrated: 2013/06/04;

Sensor-Surface: 2mm (Mechanical Surface Detection)

Electronics: DAE4 Sn1372; Calibrated: 2013/06/03

Phantom: ELI v5.0 TP1207; Type: QDOVA001BB;

Measurement SW: DASYS2, Version 52.8 (7);

Area Scan (61x81x1): Interpolated grid: $dx=1.500$ mm, $dy=1.500$ mm

Maximum value of SAR (interpolated) = 3.27 W/kg

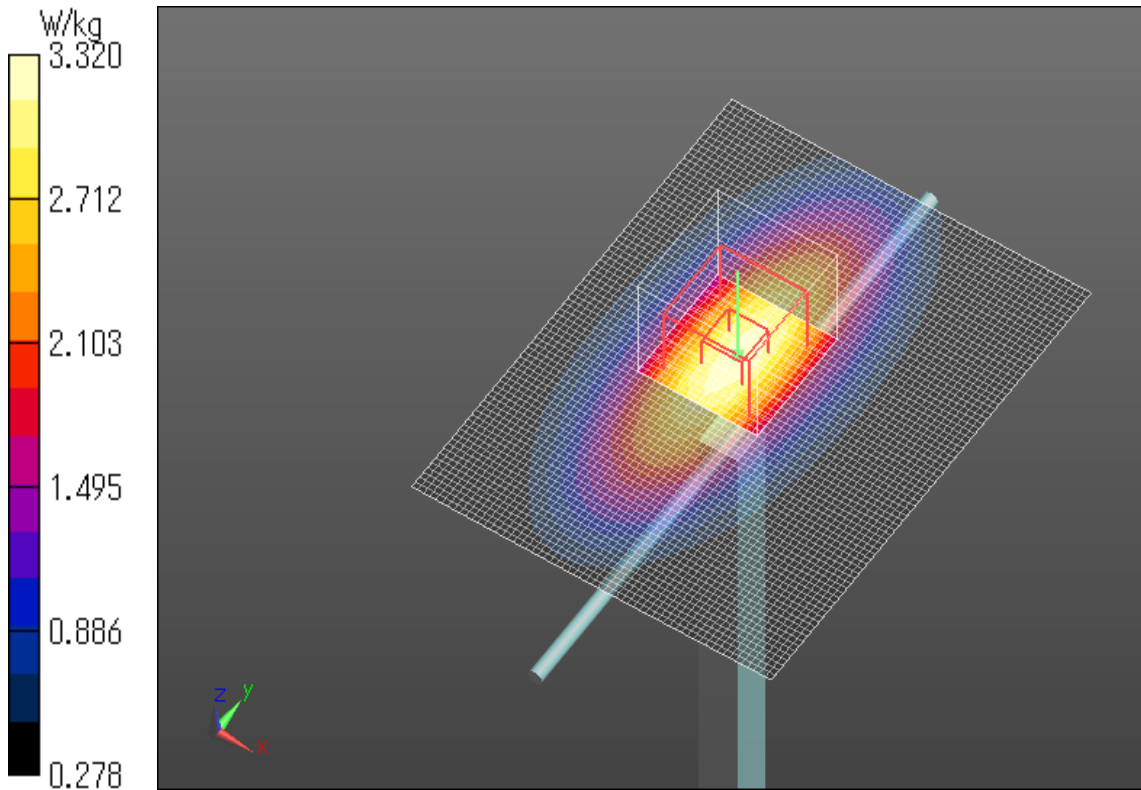
Zoom Scan (7x7x7) (7x7x7)/Cube 0: Measurement grid: $dx=5$ mm, $dy=5$ mm, $dz=5$ mm

Reference Value = 55.774 V/m; Power Drift = 0.09 dB

Peak SAR (extrapolated) = 3.94 W/kg

SAR(1 g) = 2.6 W/kg; SAR(10 g) = 1.69 W/kg

Maximum value of SAR (measured) = 3.32 W/kg



SystemPerformanceCheck-D750 Body 20130808

Communication System: UID 0, CW (0); Communication System Band: D750 (750.0 MHz); Frequency: 750 MHz; Duty Cycle: 1:1

Medium parameters used: $f = 750$ MHz; $\sigma = 0.936$ S/m; $\epsilon_r = 55.628$; $\rho = 1000$ kg/m³

Phantom section: Flat Section

Measurement Standard: DASY5 (IEEE/IEC/ANSI C63.19-2007)

DASY5 Configuration

Probe: EX3DV4 - SN3917; ConvF(9.99, 9.99, 9.99); Calibrated: 2013/05/14;

Sensor-Surface: 2mm (Mechanical Surface Detection)

Electronics: DAE4 Sn1369; Calibrated: 2013/05/13

Phantom: ELI v5.0 SN1203; Type: QDOVA002AA; Serial: TP:1203

Measurement SW: DASY52, Version 52.8 (7);

Area Scan 2 (61x91x1): Interpolated grid: dx=1.500 mm, dy=1.500 mm

Maximum value of SAR (interpolated) = 2.50 W/kg

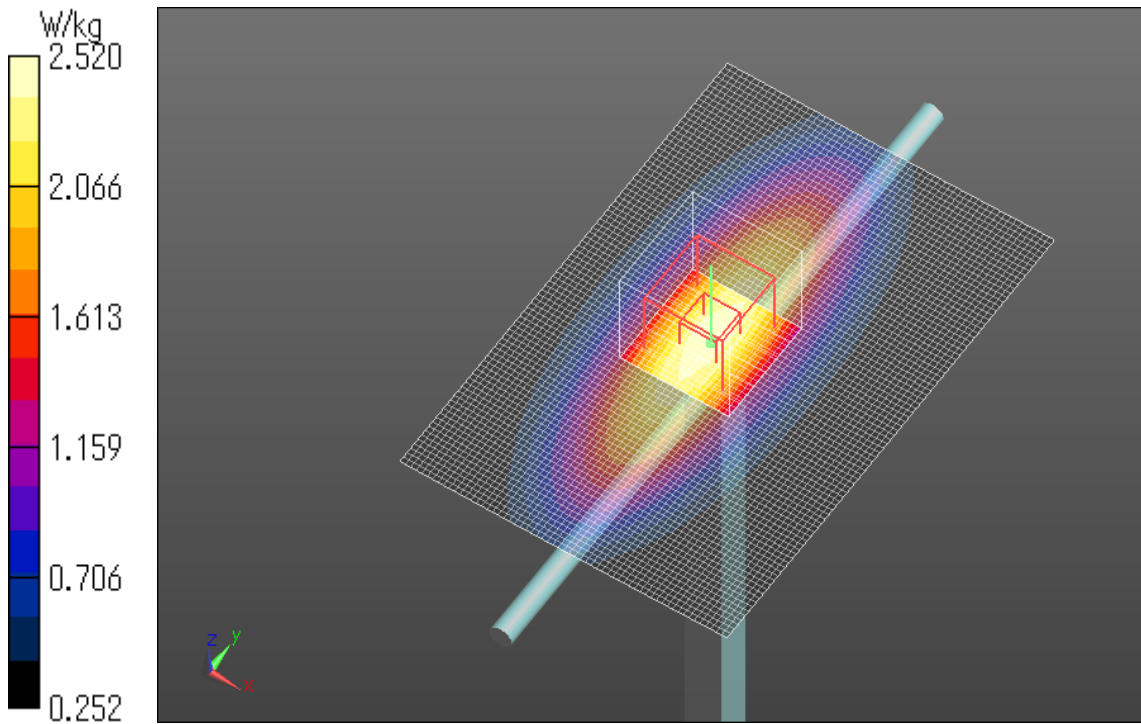
Zoom Scan (7x7x7)/Cube 0: Measurement grid: dx=5mm, dy=5mm, dz=5mm

Reference Value = 53.307 V/m; Power Drift = -0.01 dB

Peak SAR (extrapolated) = 2.96 W/kg

SAR(1 g) = 2 W/kg; SAR(10 g) = 1.33 W/kg

Maximum value of SAR (measured) = 2.52 W/kg



SystemPerformanceCheck-D900 Body 20130808

Communication System: UID 0, CW; Communication System Band: D900 (900.0 MHz); Frequency: 900 MHz; Duty Cycle: 1:1

Medium parameters used: $f = 900$ MHz; $\sigma = 1.001$ S/m; $\epsilon_r = 56.788$; $\rho = 1000$ kg/m³

Phantom section: Flat Section

Measurement Standard: DASYS5 (IEEE/IEC/ANSI C63.19-2007)

DASY5 Configuration

Probe: EX3DV4 - SN3922; ConvF(10.02, 10.02, 10.02); Calibrated: 2013/06/04;

Sensor-Surface: 2mm (Mechanical Surface Detection)

Electronics: DAE4 Sn1372; Calibrated: 2013/06/03

Phantom: ELI v5.0 TP1207; Type: QDOVA001BB;

Measurement SW: DASYS2, Version 52.8 (7);

Area Scan (61x81x1): Interpolated grid: dx=1.500 mm, dy=1.500 mm

Maximum value of SAR (interpolated) = 3.10 W/kg

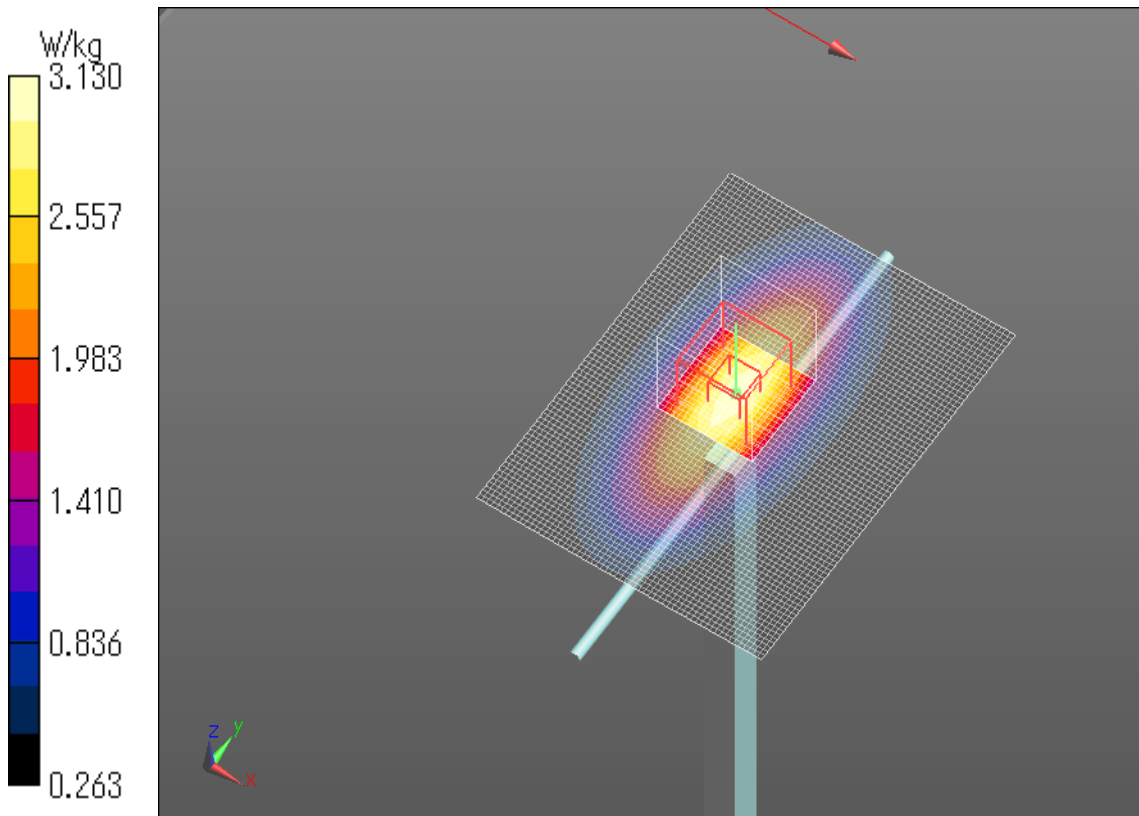
Zoom Scan (7x7x7) (7x7x7)/Cube 0: Measurement grid: dx=5mm, dy=5mm, dz=5mm

Reference Value = 57.429 V/m; Power Drift = -0.10 dB

Peak SAR (extrapolated) = 3.71 W/kg

SAR(1 g) = 2.49 W/kg; SAR(10 g) = 1.63 W/kg

Maximum value of SAR (measured) = 3.13 W/kg

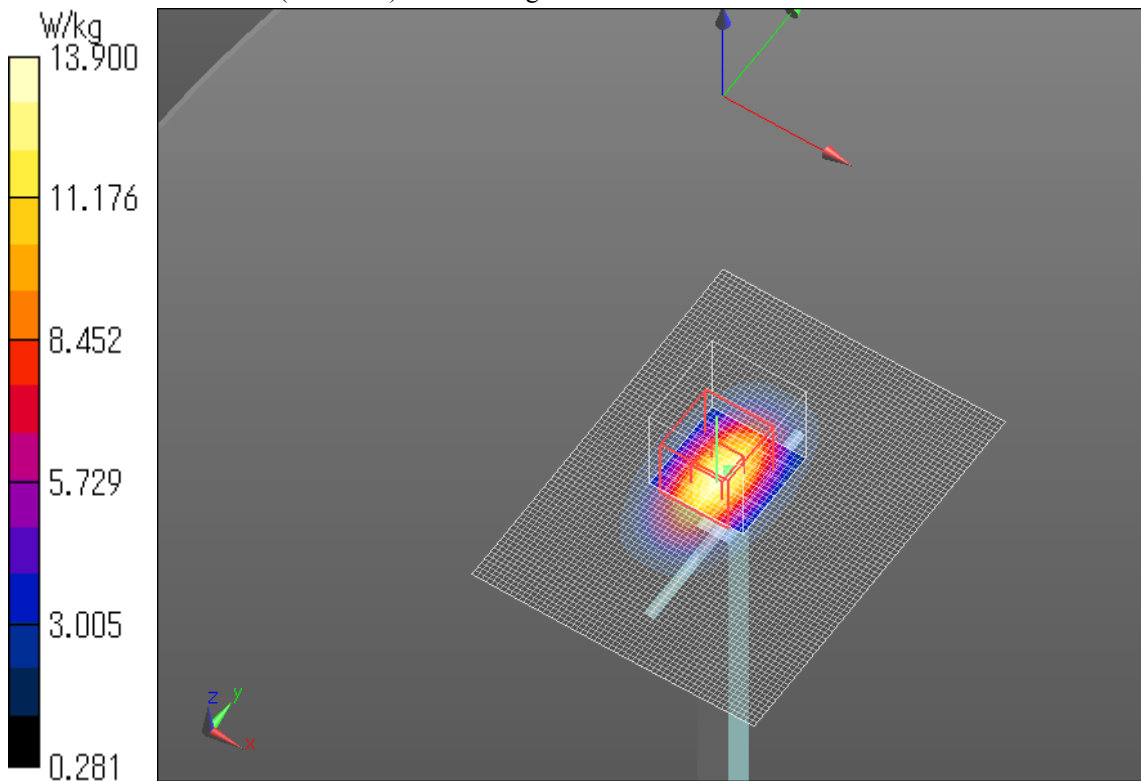


SAR2_SystemPerformanceCheck-D1800 Body 20130809

Communication System: UID 0, CW (0); Communication System Band: D1800 (1800.0 MHz);
Frequency: 1800 MHz; Duty Cycle: 1:1
Medium parameters used: $f = 1800$ MHz; $\sigma = 1.463$ S/m; $\epsilon_r = 51.554$; $\rho = 1000$ kg/m³
Phantom section: Flat Section
Measurement Standard: DASY5 (IEEE/IEC/ANSI C63.19-2007)
DASY5 Configuration
Probe: EX3DV4 - SN3922; ConvF(7.94, 7.94, 7.94); Calibrated: 2013/06/04;
Sensor-Surface: 2mm (Mechanical Surface Detection)
Electronics: DAE4 Sn1372; Calibrated: 2013/06/03
Phantom: ELI v5.0 TP1207; Type: QDOVA001BB; Serial: TP:1207
Measurement SW: DASY52, Version 52.8 (7);

Area Scan (61x81x1): Interpolated grid: dx=1.500 mm, dy=1.500 mm
Maximum value of SAR (interpolated) = 14.8 W/kg

Zoom Scan (7x7x7)/Cube 0: Measurement grid: dx=5mm, dy=5mm, dz=5mm
Reference Value = 95.382 V/m; Power Drift = 0.09 dB
Peak SAR (extrapolated) = 17.4 W/kg
SAR(1 g) = 9.83 W/kg; SAR(10 g) = 5.24 W/kg
Maximum value of SAR (measured) = 13.9 W/kg

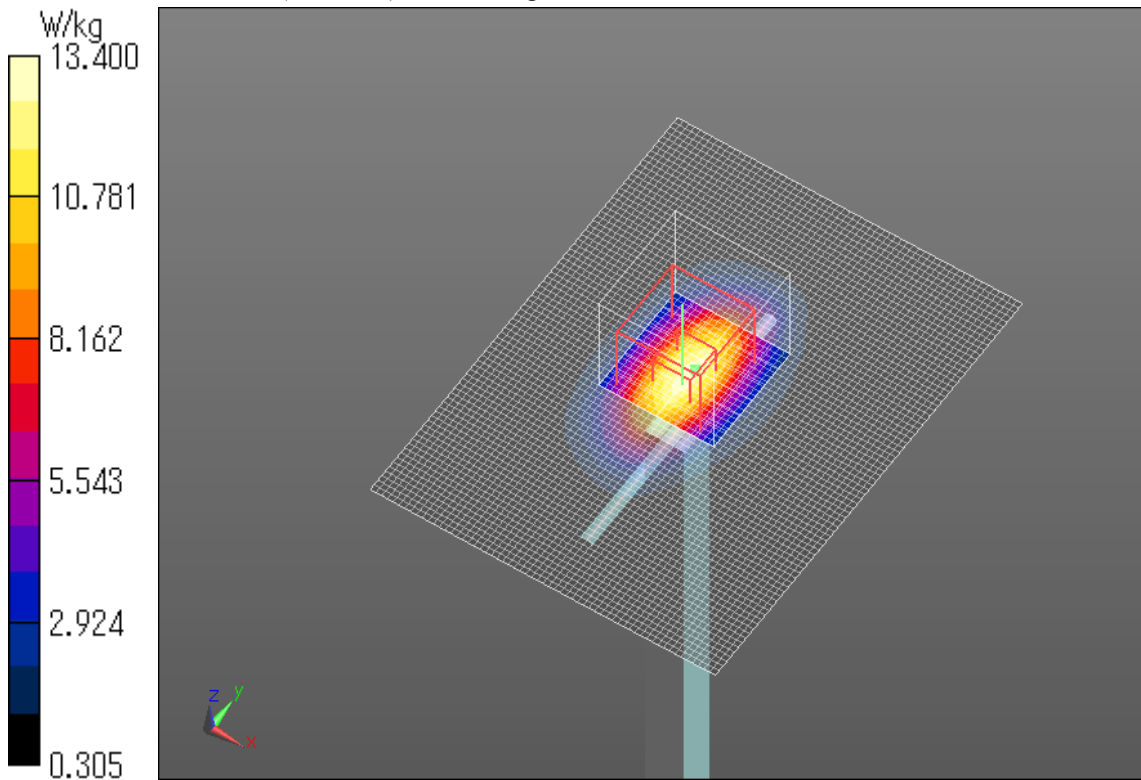


SystemPerformanceCheck-D1800 Body 20130810

Communication System: UID 0, CW (0); Communication System Band: D1800 (1800.0 MHz);
Frequency: 1800 MHz;Duty Cycle: 1:1
Medium parameters used: $f = 1800$ MHz; $\sigma = 1.468$ S/m; $\epsilon_r = 52.791$; $\rho = 1000$ kg/m³
Phantom section: Flat Section
Measurement Standard: DASYS5 (IEEE/IEC/ANSI C63.19-2007)
DASY5 Configuration
Probe: EX3DV4 - SN3922; ConvF(7.94, 7.94, 7.94); Calibrated: 2013/06/04;
Sensor-Surface: 2mm (Mechanical Surface Detection (Locations From Previous Scan Used)),
Sensor-Surface: 2mm (Mechanical Surface Detection)
Electronics: DAE4 Sn1372; Calibrated: 2013/06/03
Phantom: ELI v5.0 TP1207; Type: QDOVA001BB;
Measurement SW: DASYS2, Version 52.8 (7);

Area Scan (61x81x1): Interpolated grid: dx=1.500 mm, dy=1.500 mm
Maximum value of SAR (interpolated) = 14.4 W/kg

Zoom Scan (7x7x7) (7x7x7)/Cube 0: Measurement grid: dx=5mm, dy=5mm, dz=5mm
Reference Value = 96.991 V/m; Power Drift = 0.01 dB
Peak SAR (extrapolated) = 16.9 W/kg
SAR(1 g) = 9.57 W/kg; SAR(10 g) = 5.12 W/kg
Maximum value of SAR (measured) = 13.4 W/kg

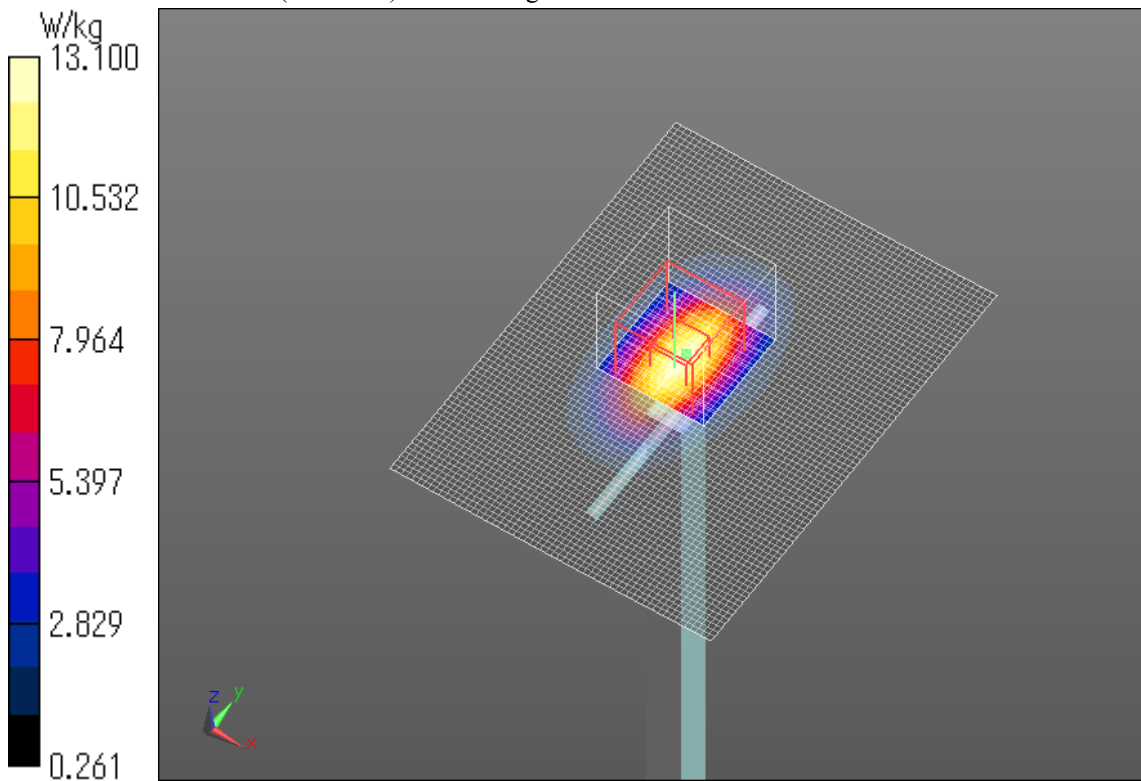


SystemPerformanceCheck-D1800 Body 201308011

Communication System: UID 0, CW (0); Communication System Band: D1800 (1800.0 MHz);
Frequency: 1800 MHz; Duty Cycle: 1:1
Medium parameters used: $f = 1800$ MHz; $\sigma = 1.464$ S/m; $\epsilon_r = 52.613$; $\rho = 1000$ kg/m³
Phantom section: Flat Section
Measurement Standard: DASYS5 (IEEE/IEC/ANSI C63.19-2007)
DASY5 Configuration
Probe: EX3DV4 - SN3922; ConvF(7.94, 7.94, 7.94); Calibrated: 2013/06/04;
Sensor-Surface: 2mm (Mechanical Surface Detection)
Electronics: DAE4 Sn1372; Calibrated: 2013/06/03
Phantom: ELI v5.0 TP1207; Type: QDOVA001BB;
Measurement SW: DASYS2, Version 52.8 (7);

Area Scan (61x81x1): Interpolated grid: dx=1.500 mm, dy=1.500 mm
Maximum value of SAR (interpolated) = 13.7 W/kg

Zoom Scan (7x7x7) (7x7x7)/Cube 0: Measurement grid: dx=5mm, dy=5mm, dz=5mm
Reference Value = 95.303 V/m; Power Drift = 0.01 dB
Peak SAR (extrapolated) = 16.6 W/kg
SAR(1 g) = 9.31 W/kg; SAR(10 g) = 4.92 W/kg
Maximum value of SAR (measured) = 13.1 W/kg

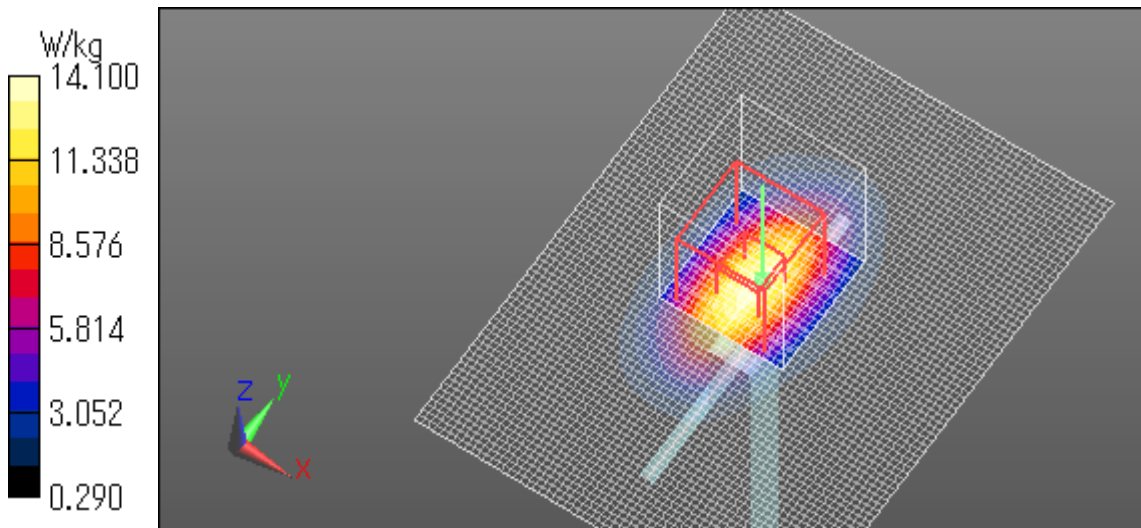


SystemPerformanceCheck-D1800 Body 20130812

Communication System: UID 0, CW (0); Communication System Band: D1800 (1800.0 MHz);
Frequency: 1800 MHz; Duty Cycle: 1:1
Medium parameters used: $f = 1800$ MHz; $\sigma = 1.46$ S/m; $\epsilon_r = 52.634$; $\rho = 1000$ kg/m³
Phantom section: Flat Section
Measurement Standard: DASYS5 (IEEE/IEC/ANSI C63.19-2007)
DASY5 Configuration
Probe: EX3DV4 - SN3922; ConvF(7.94, 7.94, 7.94); Calibrated: 2013/06/04;
Sensor-Surface: 2mm (Mechanical Surface Detection)
Electronics: DAE4 Sn1372; Calibrated: 2013/06/03
Phantom: ELI v5.0 TP1207; Type: QDOVA002AA;
Measurement SW: DASYS2, Version 52.8 (7);

Area Scan (61x81x1): Interpolated grid: dx=1.500 mm, dy=1.500 mm
Maximum value of SAR (interpolated) = 14.8 W/kg

Zoom Scan (7x7x7) (7x7x7)/Cube 0: Measurement grid: dx=5mm, dy=5mm, dz=5mm
Reference Value = 100.0 V/m; Power Drift = 0.03 dB
Peak SAR (extrapolated) = 17.9 W/kg
SAR(1 g) = 10.1 W/kg; SAR(10 g) = 5.33 W/kg
Maximum value of SAR (measured) = 14.1 W/kg



SystemPerformanceCheck-D750 Body 20130813

Communication System: UID 0, CW (0); Communication System Band: D750 (750.0 MHz); Frequency: 750 MHz; Duty Cycle: 1:1

Medium parameters used: $f = 750$ MHz; $\sigma = 0.953$ S/m; $\epsilon_r = 55.749$; $\rho = 1000$ kg/m³

Phantom section: Flat Section

Measurement Standard: DASYS5 (IEEE/IEC/ANSI C63.19-2007)

DASY5 Configuration

Probe: EX3DV4 - SN3917; ConvF(9.99, 9.99, 9.99); Calibrated: 2013/05/14;

Sensor-Surface: 2mm (Mechanical Surface Detection)

Electronics: DAE4 Sn1369; Calibrated: 2013/05/13

Phantom: ELI v5.0 SN1203; Type: QDOVA002AA;

Measurement SW: DASYS2, Version 52.8 (7);

Area Scan 2 (61x91x1): Interpolated grid: dx=1.500 mm, dy=1.500 mm

Maximum value of SAR (interpolated) = 2.58 W/kg

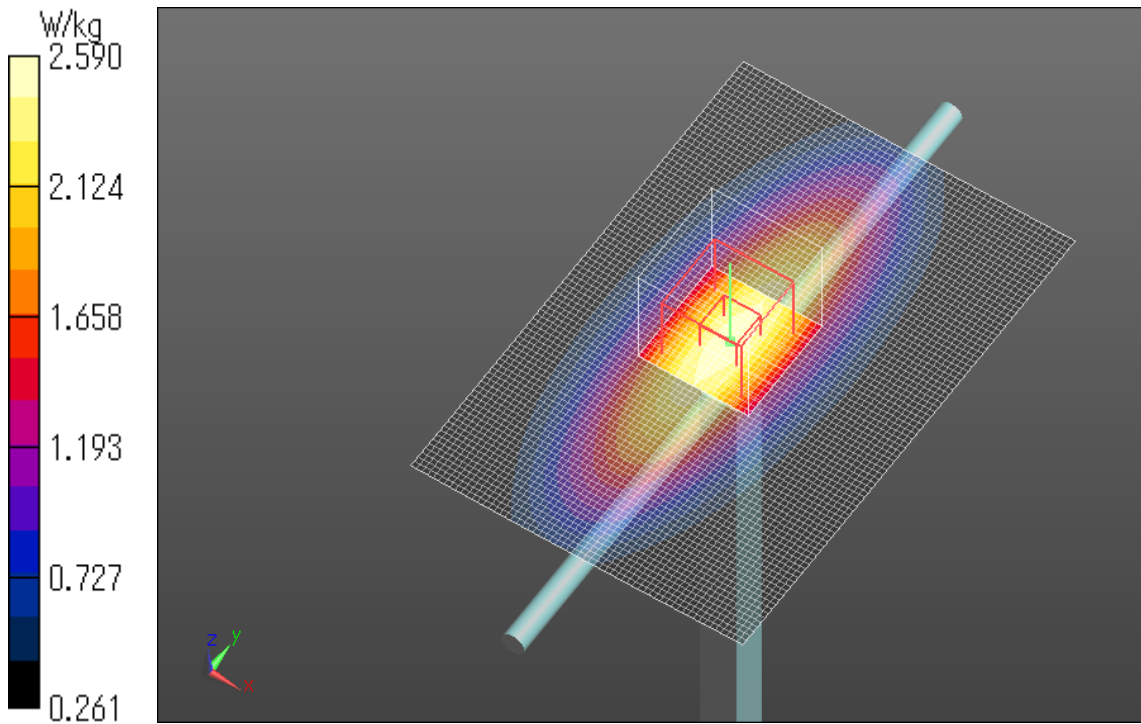
Zoom Scan (7x7x7)/Cube 0: Measurement grid: dx=5mm, dy=5mm, dz=5mm

Reference Value = 53.424 V/m; Power Drift = 0.03 dB

Peak SAR (extrapolated) = 3.03 W/kg

SAR(1 g) = 2.06 W/kg; SAR(10 g) = 1.37 W/kg

Maximum value of SAR (measured) = 2.59 W/kg



SystemPerformanceCheck-D900 Body 20130813

Communication System: UID 0, CW (0); Communication System Band: D900 (900.0 MHz); Frequency: 900 MHz; Duty Cycle: 1:1

Medium parameters used: $f = 900$ MHz; $\sigma = 1.01$ S/m; $\epsilon_r = 52.427$; $\rho = 1000$ kg/m³

Phantom section: Flat Section

Measurement Standard: DASYS5 (IEEE/IEC/ANSI C63.19-2007)

DASY5 Configuration

Probe: EX3DV4 - SN3922; ConvF(10.02, 10.02, 10.02); Calibrated: 2013/06/04;

Sensor-Surface: 2mm (Mechanical Surface Detection)

Electronics: DAE4 Sn1372; Calibrated: 2013/06/03

Phantom: ELI v5.0 TP1207; Type: QDOVA002AA; Serial: TP:1207

Measurement SW: DASYS2, Version 52.8 (7); SEMCAD X Version 14.6.10 (7164)

Area Scan (61x101x1): Interpolated grid: dx=1.500 mm, dy=1.500 mm

Maximum value of SAR (interpolated) = 3.16 W/kg

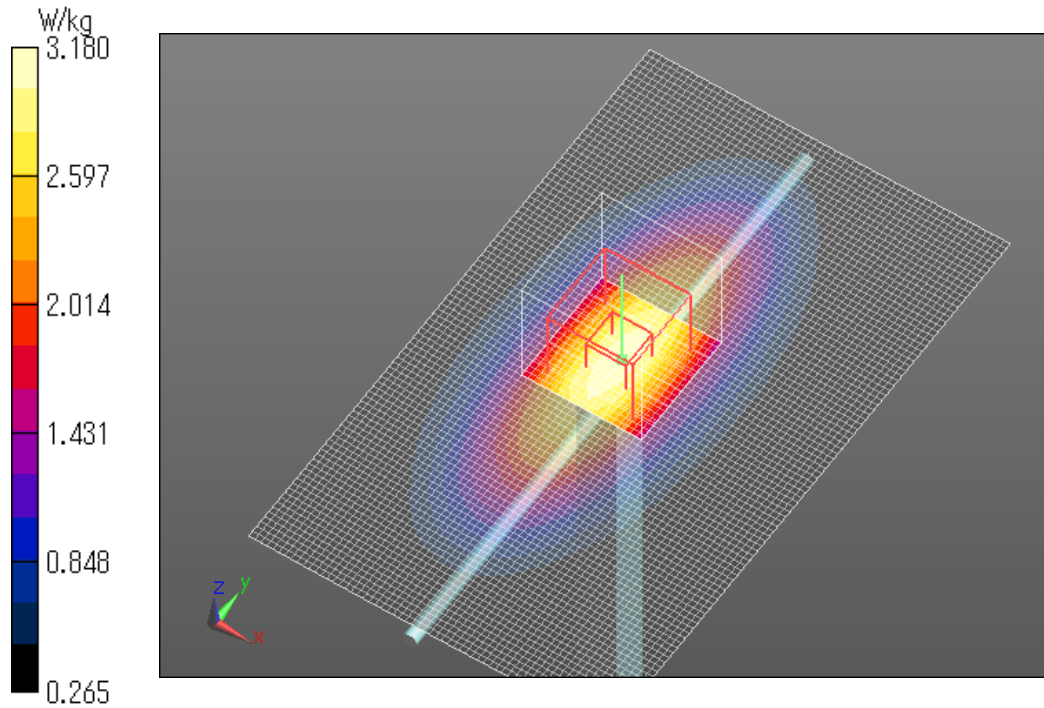
Zoom Scan (7x7x7)/Cube 0: Measurement grid: dx=5mm, dy=5mm, dz=5mm

Reference Value = 3.456 V/m; Power Drift = 0.07 dB

Peak SAR (extrapolated) = 3.78 W/kg

SAR(1 g) = 2.49 W/kg; SAR(10 g) = 1.62 W/kg

Maximum value of SAR (measured) = 3.18 W/kg

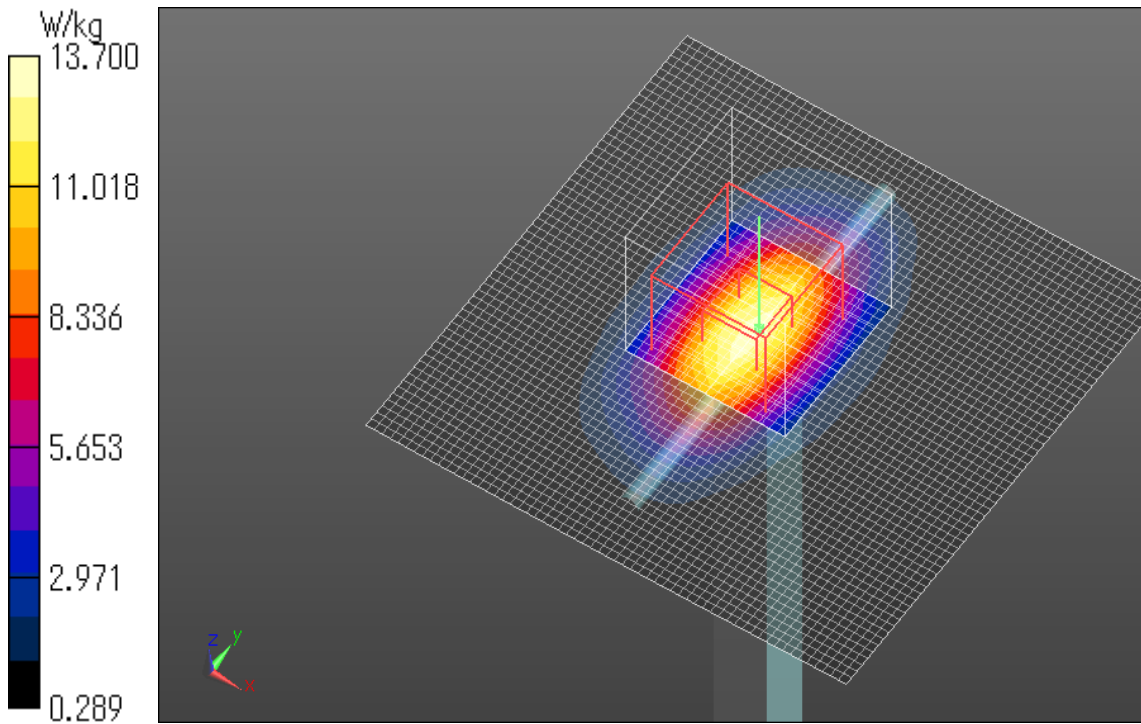


SystemPerformanceCheck-D1800 Body 20130814

Communication System: UID 0, CW (0); Communication System Band: D1800 (1800.0 MHz);
Frequency: 1800 MHz; Duty Cycle: 1:1
Medium parameters used: $f = 1800$ MHz; $\sigma = 1.451$ S/m; $\epsilon_r = 53.391$; $\rho = 1000$ kg/m³
Phantom section: Flat Section
Measurement Standard: DASY5 (IEEE/IEC/ANSI C63.19-2007)
DASY5 Configuration
Probe: EX3DV4 - SN3917; ConvF(7.73, 7.73, 7.73); Calibrated: 2013/05/14;
Sensor-Surface: 2mm (Mechanical Surface Detection)
Electronics: DAE4 Sn1369; Calibrated: 2013/05/13
Phantom: ELI v5.0 SN1203; Type: QDOVA002AA;
Measurement SW: DASY52, Version 52.8 (7);

Area Scan 2 (61x61x1): Interpolated grid: dx=1.500 mm, dy=1.500 mm
Maximum value of SAR (interpolated) = 13.7 W/kg

Zoom Scan (7x7x7)/Cube 0: Measurement grid: dx=5mm, dy=5mm, dz=5mm
Reference Value = 99.670 V/m; Power Drift = -0.01 dB
Peak SAR (extrapolated) = 17.2 W/kg
SAR(1 g) = 9.69 W/kg; SAR(10 g) = 5.14 W/kg
Maximum value of SAR (measured) = 13.7 W/kg



SystemPerformanceCheck-D1800 Body 20130815

Communication System: UID 0, CW (0); Communication System Band: D1800 (1800.0 MHz);
Frequency: 1800 MHz; Duty Cycle: 1:1
Medium parameters used: $f = 1800$ MHz; $\sigma = 1.455$ S/m; $\epsilon_r = 55.315$; $\rho = 1000$ kg/m³
Phantom section: Flat Section
Measurement Standard: DASYS5 (IEEE/IEC/ANSI C63.19-2007)
DASYS5 Configuration
Probe: EX3DV4 - SN3917; ConvF(7.73, 7.73, 7.73); Calibrated: 2013/05/14;
Sensor-Surface: 2mm (Mechanical Surface Detection)
Electronics: DAE4 Sn1369; Calibrated: 2013/05/13
Phantom: ELI v5.0 SN1203; Type: QDOVA002AA;
Measurement SW: DASYS2, Version 52.8 (7);

Area Scan 2 (61x61x1): Interpolated grid: dx=1.500 mm, dy=1.500 mm
Maximum value of SAR (interpolated) = 13.7 W/kg

Zoom Scan (7x7x7)/Cube 0: Measurement grid: dx=5mm, dy=5mm, dz=5mm
Reference Value = 99.415 V/m; Power Drift = 0.04 dB
Peak SAR (extrapolated) = 17.3 W/kg
SAR(1 g) = 9.76 W/kg; SAR(10 g) = 5.2 W/kg
Maximum value of SAR (measured) = 13.7 W/kg

