

## GSM 850

Frequency: 836.6 MHz; Duty Cycle: 1:4.00037; Room Ambient Temperature: 23.0°C; Liquid Temperature: 22.0°C  
Medium parameters used (interpolated):  $f = 836.6$  MHz;  $\sigma = 1.019$  S/m;  $\epsilon_r = 54.084$ ;  $\rho = 1000$  kg/m<sup>3</sup>

DASY5 Configuration:

- Area Scan Setting: Find Secondary Maximum Within: 2.0 dB and with a peak SAR value greater than 0.0012W/kg
- Electronics: DAE4 Sn1259; Calibrated: 13/02/2012
- Probe: EX3DV4 - SN3686; ConvF(8.73, 8.73, 8.73); Calibrated: 16/02/2012;
- Sensor-Surface: 2.5mm (Mechanical Surface Detection)
- Phantom: ELI v5.0 (A); Type: QDOVA001BB; Serial: 1120

**Edge 1 Prox. On/GPRS 2 Slots Ch 190/Area Scan (7x8x1):** Measurement grid: dx=15mm, dy=15mm

[Info: Interpolated medium parameters used for SAR evaluation.](#)

Maximum value of SAR (measured) = 1.18 W/kg

**Edge 1 Prox. On/GPRS 2 Slots Ch 190/Zoom Scan (5x5x7)/Cube 0:** Measurement grid: dx=8mm, dy=8mm, dz=5mm

Reference Value = 34.712 V/m; Power Drift = -0.12 dB

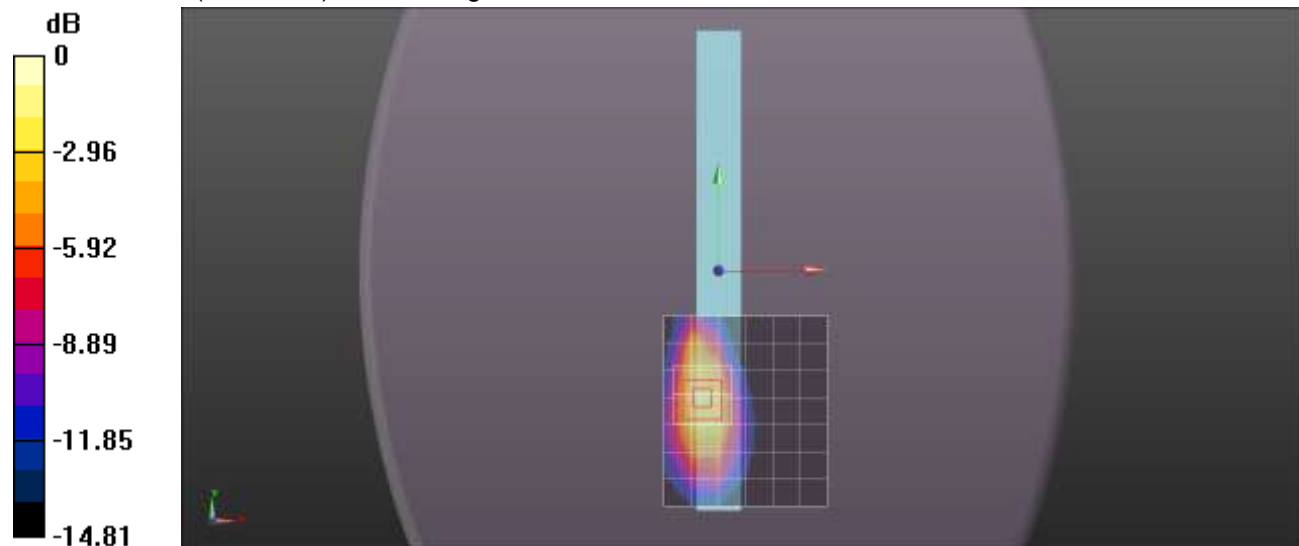
Peak SAR (extrapolated) = 2.08 W/kg

Peak SAR (extrapolated) = 2.08 W/kg

**SAR(1 g) = 1.17 W/kg; SAR(10 g) = 0.644 W/kg**

[Info: Interpolated medium parameters used for SAR evaluation.](#)

Maximum value of SAR (measured) = 1.55 W/kg



0 dB = 1.55 W/kg = 1.90 dBW/kg

## W-CDMA Band IV

Frequency: 1732.6 MHz; Duty Cycle: 1:1; Room Ambient Temperature: 24.0°C; Liquid Temperature: 23.0°C  
Medium parameters used (interpolated):  $f = 1732.6$  MHz;  $\sigma = 1.45$  S/m;  $\epsilon_r = 51.926$ ;  $\rho = 1000$  kg/m<sup>3</sup>

DASY5 Configuration:

- Area Scan Setting: Find Secondary Maximum Within: 2.0 dB and with a peak SAR value greater than 0.0012W/kg
- Electronics: DAE4 Sn1259; Calibrated: 13/02/2012
- Probe: EX3DV4 - SN3686; ConvF(7.44, 7.44, 7.44); Calibrated: 16/02/2012;
- Sensor-Surface: 2.5mm (Mechanical Surface Detection (Locations From Previous Scan Used)), Sensor-Surface: 2.5mm (Mechanical Surface Detection)
- Phantom: ELI v5.0 (A); Type: QDOVA001BB; Serial: 1120

**Edge 1 Prox. On/R99 RMC Ch 1413/Area Scan (7x11x1):** Measurement grid: dx=15mm, dy=15mm

[Info: Interpolated medium parameters used for SAR evaluation.](#)

Maximum value of SAR (measured) = 0.901 W/kg

**Edge 1 Prox. On/R99 RMC Ch 1413/Zoom Scan (5x5x7)/Cube 0:** Measurement grid: dx=8mm, dy=8mm, dz=5mm

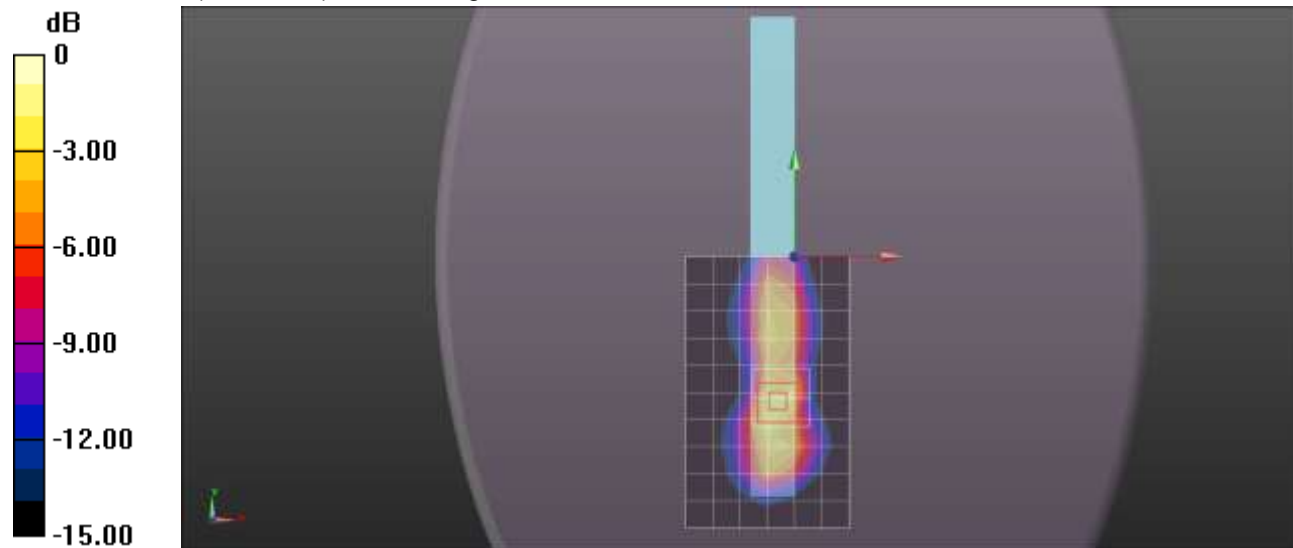
Reference Value = 26.014 V/m; Power Drift = -0.28 dB

Peak SAR (extrapolated) = 2.03 W/kg

**SAR(1 g) = 1.04 W/kg; SAR(10 g) = 0.475 W/kg**

[Info: Interpolated medium parameters used for SAR evaluation.](#)

Maximum value of SAR (measured) = 1.43 W/kg



0 dB = 1.43 W/kg = 1.55 dBW/kg

## W-CDMA Band II

Frequency: 1907.6 MHz; Duty Cycle: 1:1; Room Ambient Temperature: 24.0°C; Liquid Temperature: 23.0°C  
Medium parameters used (interpolated):  $f = 1907.6$  MHz;  $\sigma = 1.51$  S/m;  $\epsilon_r = 53.194$ ;  $\rho = 1000$  kg/m<sup>3</sup>

DASY5 Configuration:

- Area Scan Setting: Find Secondary Maximum Within: 2.0 dB and with a peak SAR value greater than 0.0012W/kg
- Electronics: DAE4 Sn1259; Calibrated: 13/02/2012
- Probe: EX3DV4 - SN3686; ConvF(7.04, 7.04, 7.04); Calibrated: 16/02/2012;
- Sensor-Surface: 2.5mm (Mechanical Surface Detection)
- Phantom: ELI v5.0 (B); Type: QDOVA001BB; Serial: 1118

**Edge 1 Prox. On/R99 RMC Ch 9538/Area Scan (6x14x1):** Measurement grid: dx=15mm, dy=15mm

[Info: Interpolated medium parameters used for SAR evaluation.](#)

Maximum value of SAR (measured) = 1.03 W/kg

**Edge 1 Prox. On/R99 RMC Ch 9538/Zoom Scan (5x5x7)/Cube 0:** Measurement grid: dx=8mm, dy=8mm, dz=5mm

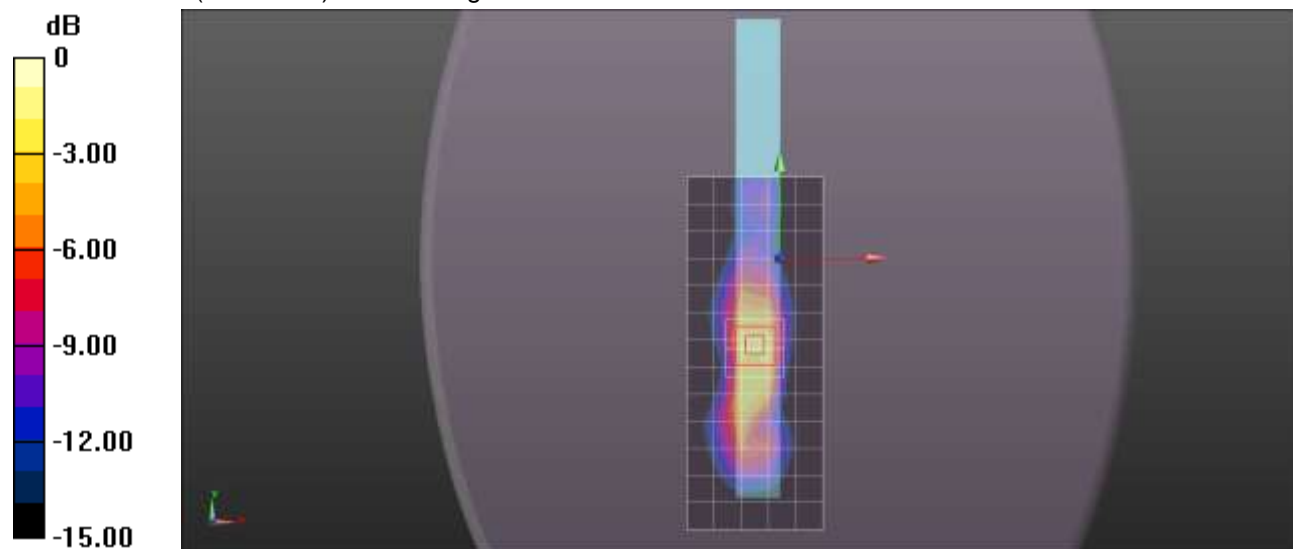
Reference Value = 26.343 V/m; Power Drift = 0.15 dB

Peak SAR (extrapolated) = 2.16 W/kg

**SAR(1 g) = 1.24 W/kg; SAR(10 g) = 0.628 W/kg**

[Info: Interpolated medium parameters used for SAR evaluation.](#)

Maximum value of SAR (measured) = 1.66 W/kg



0 dB = 1.66 W/kg = 2.20 dBW/kg