

## GSM1900

Frequency: 1880 MHz; Duty Cycle: 1:4.00037; Room Ambient Temperature: 23.0°C; Liquid Temperature: 22.0°C

Medium parameters used:  $f = 1880$  MHz;  $\sigma = 1.509$  S/m;  $\epsilon_r = 51.196$ ;  $\rho = 1000$  kg/m<sup>3</sup>

DASY5 Configuration:

- Area Scan Setting: Find Secondary Maximum Within: 2.0 dB and with a peak SAR value greater than 0.0012W/kg
- Electronics: DAE4 Sn1343; Calibrated: 8/20/2012
- Probe: EX3DV4 - SN3871; ConvF(7.83, 7.83, 7.83); Calibrated: 8/20/2012;
- Sensor-Surface: 2.5mm (Mechanical Surface Detection (Locations From Previous Scan Used)), Sensor-Surface: 2.5mm (Mechanical Surface Detection)
- Phantom: ELI v5.0 A; Type: QDOVA002AA; Serial: 1180

**Rear Prox. On/GPRS 2 Slots Ch 661/Area Scan (8x9x1):** Measurement grid: dx=15mm, dy=15mm

Maximum value of SAR (measured) = 0.250 W/kg

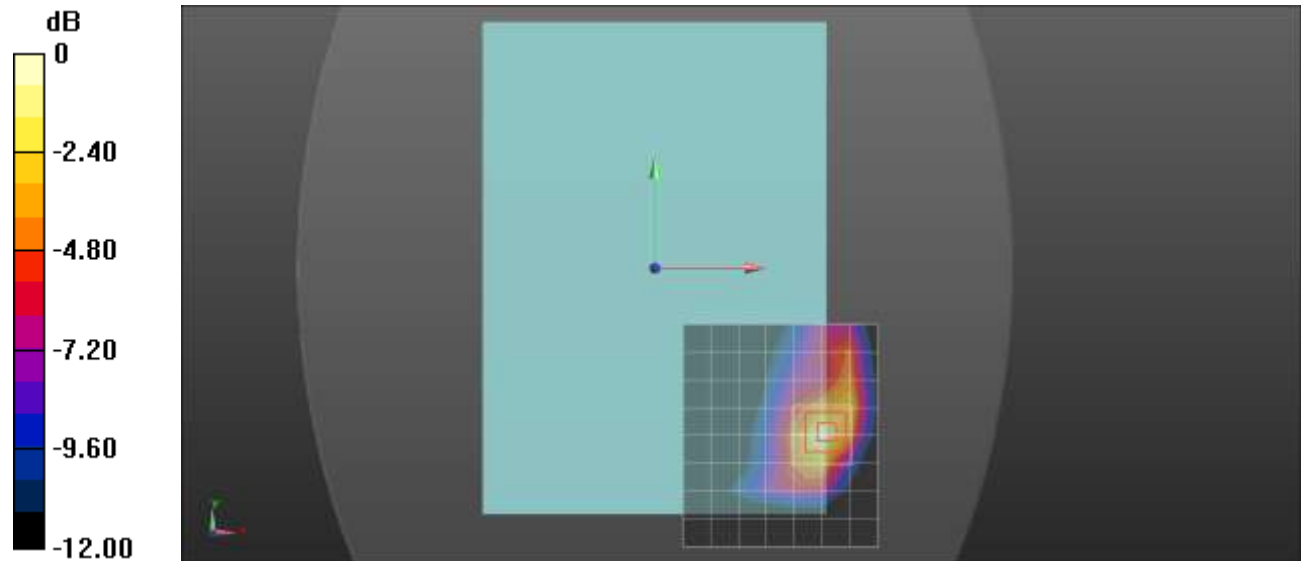
**Rear Prox. On/GPRS 2 Slots Ch 661/Zoom Scan (5x5x7)/Cube 0:** Measurement grid: dx=8mm, dy=8mm, dz=5mm

Reference Value = 12.832 V/m; Power Drift = 0.01 dB

Peak SAR (extrapolated) = 0.341 W/kg

**SAR(1 g) = 0.178 W/kg; SAR(10 g) = 0.092 W/kg**

Maximum value of SAR (measured) = 0.244 W/kg



0 dB = 0.244 W/kg = -6.13 dBW/kg

## GSM1900

Frequency: 1850.2 MHz; Duty Cycle: 1:4.00037; Room Ambient Temperature: 23.0°C; Liquid Temperature: 22.0°C  
Medium parameters used (interpolated):  $f = 1850.2$  MHz;  $\sigma = 1.448$  S/m;  $\epsilon_r = 50.882$ ;  $\rho = 1000$  kg/m<sup>3</sup>

DASY5 Configuration:

- Area Scan Setting: Find Secondary Maximum Within: 2.0 dB and with a peak SAR value greater than 0.0012W/kg
- Electronics: DAE4 Sn1259; Calibrated: 2/13/2012
- Probe: EX3DV4 - SN3686; ConvF(7.04, 7.04, 7.04); Calibrated: 2/16/2012;
- Sensor-Surface: 2.5mm (Mechanical Surface Detection (Locations From Previous Scan Used)), Sensor-Surface: 2.5mm (Mechanical Surface Detection)
- Phantom: ELI v5.0 (B); Type: QDOVA001BB; Serial: 1099

**Edge 1 Prox. On/GPRS 2 Slots Ch 512/Area Scan (7x9x1):** Measurement grid: dx=15mm, dy=15mm

[Info: Interpolated medium parameters used for SAR evaluation.](#)

Maximum value of SAR (measured) = 0.945 W/kg

**Edge 1 Prox. On/GPRS 2 Slots Ch 512/Zoom Scan (5x5x7)/Cube 0:** Measurement grid: dx=8mm, dy=8mm, dz=5mm

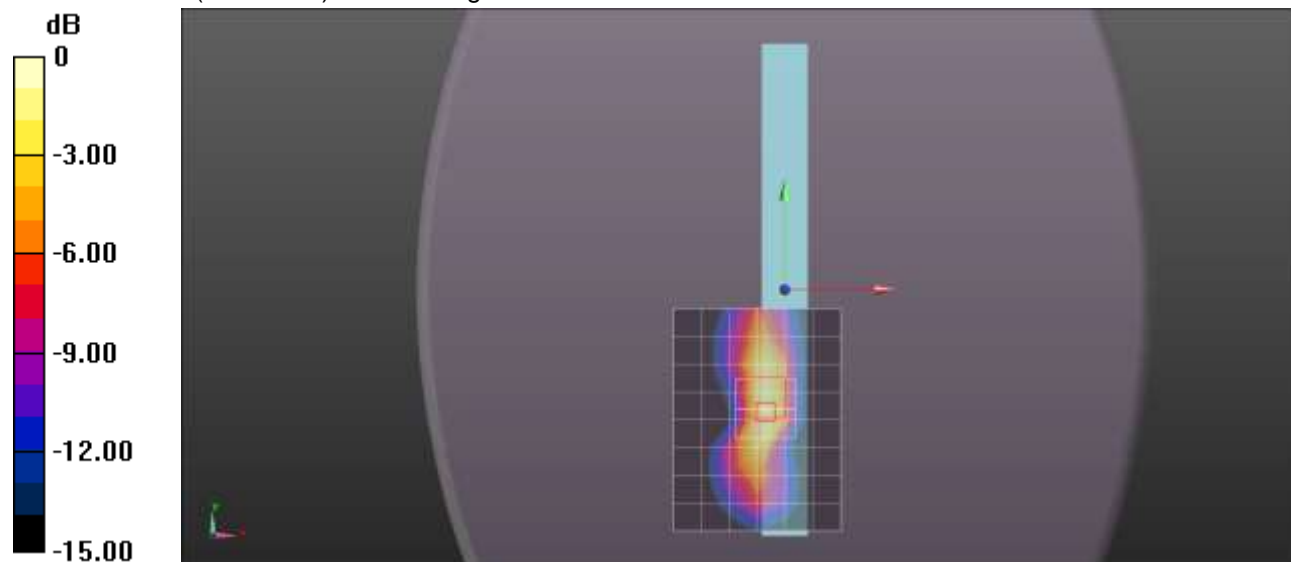
Reference Value = 26.826 V/m; Power Drift = -0.14 dB

Peak SAR (extrapolated) = 1.71 W/kg

**SAR(1 g) = 0.859 W/kg; SAR(10 g) = 0.435 W/kg**

[Info: Interpolated medium parameters used for SAR evaluation.](#)

Maximum value of SAR (measured) = 1.18 W/kg



0 dB = 1.18 W/kg = 0.72 dBW/kg

## GSM1900

Frequency: 1880 MHz; Duty Cycle: 1:4.00037; Room Ambient Temperature: 23.0°C; Liquid Temperature: 22.0°C  
Medium parameters used:  $f = 1880$  MHz;  $\sigma = 1.482$  S/m;  $\epsilon_r = 50.728$ ;  $\rho = 1000$  kg/m<sup>3</sup>

DASY5 Configuration:

- Area Scan Setting: Find Secondary Maximum Within: 2.0 dB and with a peak SAR value greater than 0.0012W/kg
- Electronics: DAE4 Sn1259; Calibrated: 2/13/2012
- Probe: EX3DV4 - SN3686; ConvF(7.04, 7.04, 7.04); Calibrated: 2/16/2012;
- Sensor-Surface: 2.5mm (Mechanical Surface Detection)
- Phantom: ELI v5.0 (B); Type: QDOVA001BB; Serial: 1099

**Edge 1 Prox. On/GPRS 2 Slots Ch 661/Area Scan (7x9x1):** Measurement grid: dx=15mm, dy=15mm  
Maximum value of SAR (measured) = 1.26 W/kg

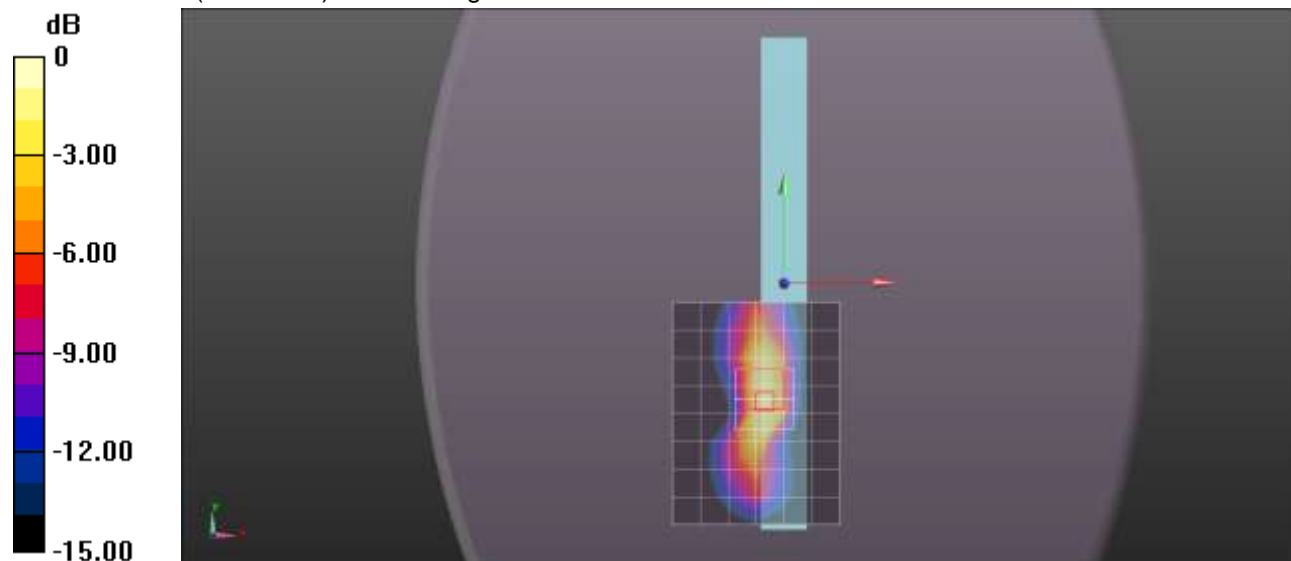
**Edge 1 Prox. On/GPRS 2 Slots Ch 661/Zoom Scan (5x5x7)/Cube 0:** Measurement grid: dx=8mm, dy=8mm, dz=5mm

Reference Value = 29.527 V/m; Power Drift = -0.13 dB

Peak SAR (extrapolated) = 2.13 W/kg

**SAR(1 g) = 1.08 W/kg; SAR(10 g) = 0.552 W/kg**

Maximum value of SAR (measured) = 1.48 W/kg



0 dB = 1.48 W/kg = 1.70 dBW/kg

## GSM1900

Frequency: 1909.8 MHz; Duty Cycle: 1:4.00037; Room Ambient Temperature: 23.0°C; Liquid Temperature: 22.0°C  
Medium parameters used:  $f = 1910$  MHz;  $\sigma = 1.517$  S/m;  $\epsilon_r = 50.636$ ;  $\rho = 1000$  kg/m<sup>3</sup>

DASY5 Configuration:

- Area Scan Setting: Find Secondary Maximum Within: 2.0 dB and with a peak SAR value greater than 0.0012W/kg
- Electronics: DAE4 Sn1259; Calibrated: 2/13/2012
- Probe: EX3DV4 - SN3686; ConvF(7.04, 7.04, 7.04); Calibrated: 2/16/2012;
- Sensor-Surface: 2.5mm (Mechanical Surface Detection)
- Phantom: ELI v5.0 (B); Type: QDOVA001BB; Serial: 1099

**Edge 1 Prox. On/GPRS 2 Slots Ch 810/Area Scan (7x9x1):** Measurement grid: dx=15mm, dy=15mm  
Maximum value of SAR (measured) = 1.37 W/kg

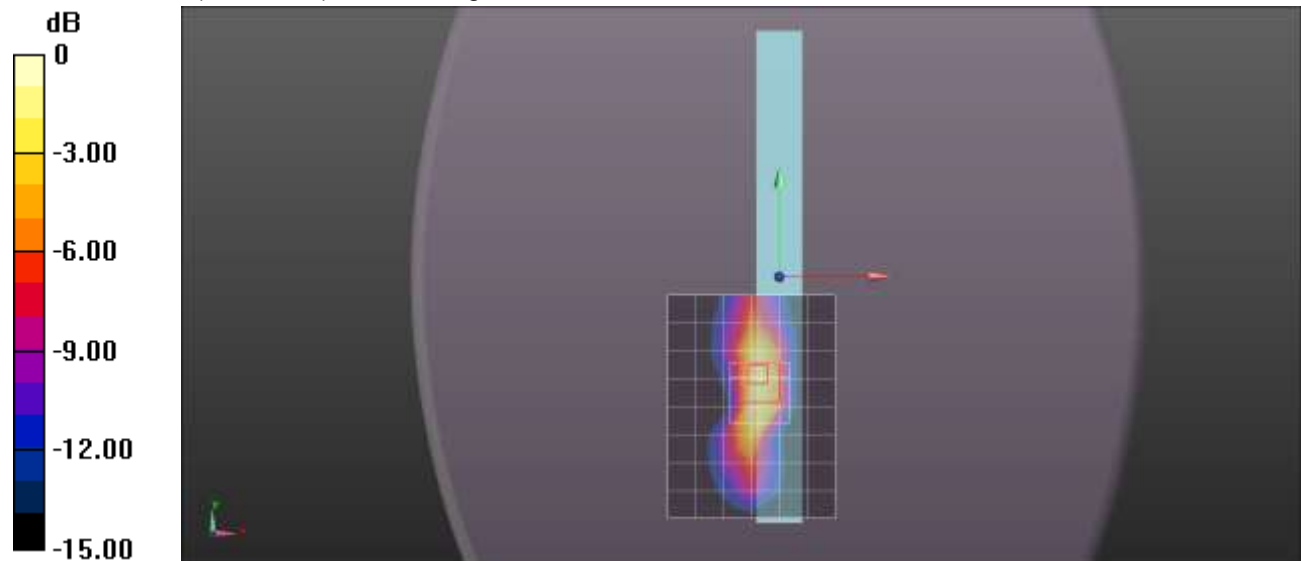
**Edge 1 Prox. On/GPRS 2 Slots Ch 810/Zoom Scan (5x5x7)/Cube 0:** Measurement grid: dx=8mm, dy=8mm, dz=5mm

Reference Value = 30.389 V/m; Power Drift = -0.10 dB

Peak SAR (extrapolated) = 2.31 W/kg

**SAR(1 g) = 1.21 W/kg; SAR(10 g) = 0.609 W/kg**

Maximum value of SAR (measured) = 1.63 W/kg



0 dB = 1.63 W/kg = 2.12 dBW/kg

## GSM1900

Frequency: 1850.2 MHz; Duty Cycle: 1:4.00037; Room Ambient Temperature: 23.0°C; Liquid Temperature: 22.0°C  
Medium parameters used (interpolated):  $f = 1850.2$  MHz;  $\sigma = 1.448$  S/m;  $\epsilon_r = 50.882$ ;  $\rho = 1000$  kg/m<sup>3</sup>

DASY5 Configuration:

- Area Scan Setting: Find Secondary Maximum Within: 2.0 dB and with a peak SAR value greater than 0.0012W/kg
- Electronics: DAE4 Sn1259; Calibrated: 2/13/2012
- Probe: EX3DV4 - SN3686; ConvF(7.04, 7.04, 7.04); Calibrated: 2/16/2012;
- Sensor-Surface: 2.5mm (Mechanical Surface Detection (Locations From Previous Scan Used)), Sensor-Surface: 2.5mm (Mechanical Surface Detection)
- Phantom: ELI v5.0 (B); Type: QDOVA001BB; Serial: 1099

**Rear Prox. Off/GPRS 2 Slots Ch 512/Area Scan (7x9x1):** Measurement grid: dx=15mm, dy=15mm

[Info: Interpolated medium parameters used for SAR evaluation.](#)

Maximum value of SAR (measured) = 1.63 W/kg

**Rear Prox. Off/GPRS 2 Slots Ch 512/Zoom Scan (5x5x7)/Cube 0:** Measurement grid: dx=8mm, dy=8mm, dz=5mm

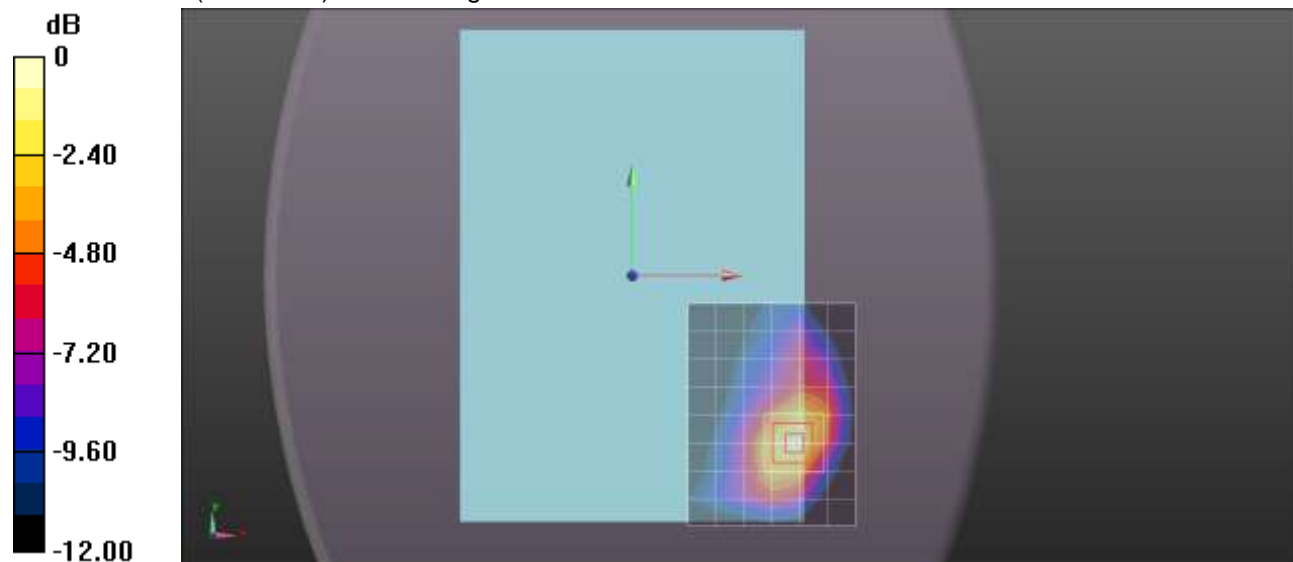
Reference Value = 33.100 V/m; Power Drift = 0.04 dB

Peak SAR (extrapolated) = 2.15 W/kg

**SAR(1 g) = 1.19 W/kg; SAR(10 g) = 0.645 W/kg**

[Info: Interpolated medium parameters used for SAR evaluation.](#)

Maximum value of SAR (measured) = 1.62 W/kg



0 dB = 1.62 W/kg = 2.10 dBW/kg

## GSM1900

Frequency: 1880 MHz; Duty Cycle: 1:4.00037; Room Ambient Temperature: 23.0°C; Liquid Temperature: 22.0°C  
Medium parameters used:  $f = 1880 \text{ MHz}$ ;  $\sigma = 1.482 \text{ S/m}$ ;  $\epsilon_r = 50.728$ ;  $\rho = 1000 \text{ kg/m}^3$

DASY5 Configuration:

- Area Scan Setting: Find Secondary Maximum Within: 2.0 dB and with a peak SAR value greater than 0.0012W/kg
- Electronics: DAE4 Sn1259; Calibrated: 2/13/2012
- Probe: EX3DV4 - SN3686; ConvF(7.04, 7.04, 7.04); Calibrated: 2/16/2012;
- Sensor-Surface: 2.5mm (Mechanical Surface Detection)
- Phantom: ELI v5.0 (B); Type: QDOVA001BB; Serial: 1099

**Rear Prox. Off/GPRS 2 Slots Ch 661/Area Scan (7x9x1):** Measurement grid:  $dx=15\text{mm}$ ,  $dy=15\text{mm}$   
Maximum value of SAR (measured) = 1.54 W/kg

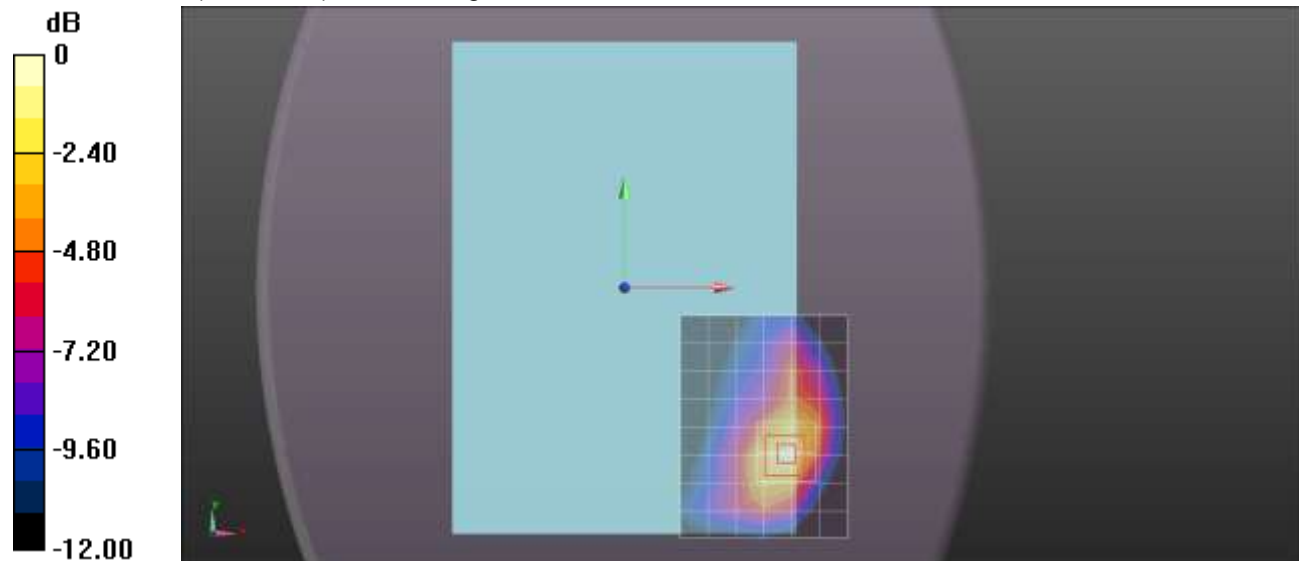
**Rear Prox. Off/GPRS 2 Slots Ch 661/Zoom Scan (5x5x7)/Cube 0:** Measurement grid:  $dx=8\text{mm}$ ,  
 $dy=8\text{mm}$ ,  $dz=5\text{mm}$

Reference Value = 32.694 V/m; Power Drift = 0.04 dB

Peak SAR (extrapolated) = 2.11 W/kg

**SAR(1 g) = 1.18 W/kg; SAR(10 g) = 0.638 W/kg**

Maximum value of SAR (measured) = 1.58 W/kg



0 dB = 1.58 W/kg = 1.99 dBW/kg

## GSM1900

Frequency: 1909.8 MHz; Duty Cycle: 1:4.00037; Room Ambient Temperature: 23.0°C; Liquid Temperature: 22.0°C  
Medium parameters used:  $f = 1910$  MHz;  $\sigma = 1.517$  S/m;  $\epsilon_r = 50.636$ ;  $\rho = 1000$  kg/m<sup>3</sup>

DASY5 Configuration:

- Area Scan Setting: Find Secondary Maximum Within: 2.0 dB and with a peak SAR value greater than 0.0012W/kg
- Electronics: DAE4 Sn1259; Calibrated: 2/13/2012
- Probe: EX3DV4 - SN3686; ConvF(7.04, 7.04, 7.04); Calibrated: 2/16/2012;
- Sensor-Surface: 2.5mm (Mechanical Surface Detection (Locations From Previous Scan Used)), Sensor-Surface: 2.5mm (Mechanical Surface Detection)
- Phantom: ELI v5.0 (B); Type: QDOVA001BB; Serial: 1099

**Rear Prox. Off/GPRS 2 Slots Ch 810/Area Scan (7x9x1):** Measurement grid: dx=15mm, dy=15mm  
Maximum value of SAR (measured) = 1.10 W/kg

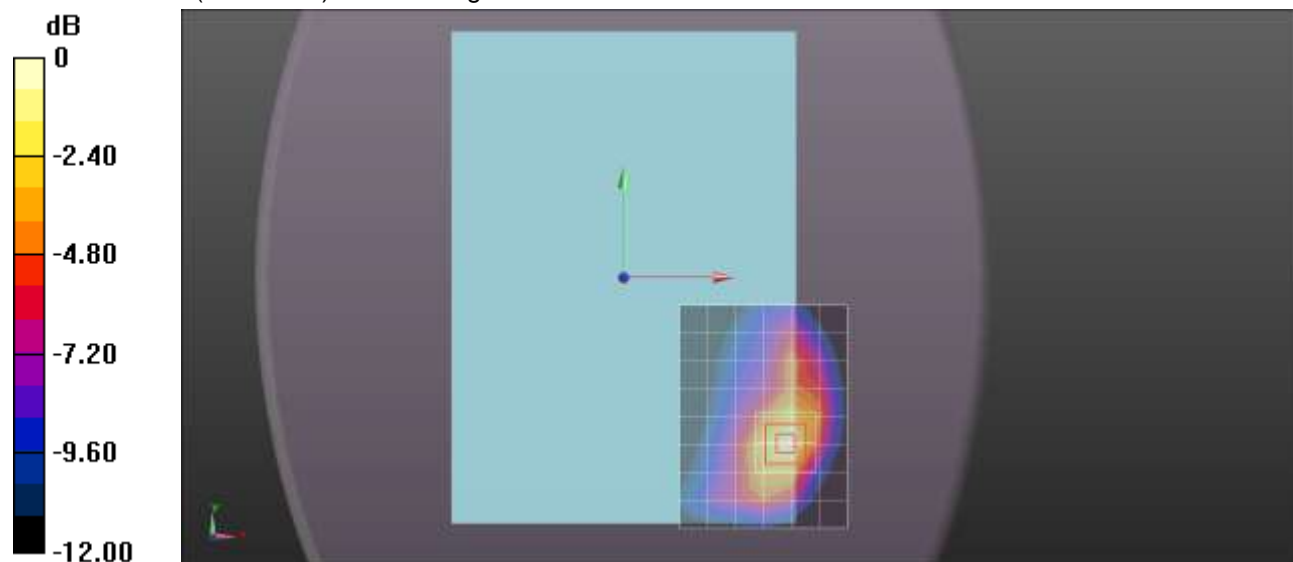
**Rear Prox. Off/GPRS 2 Slots Ch 810/Zoom Scan (5x5x7)/Cube 0:** Measurement grid: dx=8mm, dy=8mm, dz=5mm

Reference Value = 27.240 V/m; Power Drift = -0.01 dB

Peak SAR (extrapolated) = 1.53 W/kg

**SAR(1 g) = 0.832 W/kg; SAR(10 g) = 0.446 W/kg**

Maximum value of SAR (measured) = 1.13 W/kg



0 dB = 1.13 W/kg = 0.53 dBW/kg

## GSM1900

Frequency: 1880 MHz; Duty Cycle: 1:4.00037; Room Ambient Temperature: 23.0°C; Liquid Temperature: 22.0°C  
Medium parameters used:  $f = 1880$  MHz;  $\sigma = 1.482$  S/m;  $\epsilon_r = 50.728$ ;  $\rho = 1000$  kg/m<sup>3</sup>

DASY5 Configuration:

- Area Scan Setting: Find Secondary Maximum Within: 2.0 dB and with a peak SAR value greater than 0.0012W/kg
- Electronics: DAE4 Sn1259; Calibrated: 2/13/2012
- Probe: EX3DV4 - SN3686; ConvF(7.04, 7.04, 7.04); Calibrated: 2/16/2012;
- Sensor-Surface: 2.5mm (Mechanical Surface Detection (Locations From Previous Scan Used)), Sensor-Surface: 2.5mm (Mechanical Surface Detection)
- Phantom: ELI v5.0 (B); Type: QDOVA001BB; Serial: 1099

**Edge 1 Prox. Off/GPRS 2 Slots Ch 661/Area Scan (7x9x1):** Measurement grid: dx=15mm, dy=15mm  
Maximum value of SAR (measured) = 0.284 W/kg

**Edge 1 Prox. Off/GPRS 2 Slots Ch 661/Zoom Scan (5x5x7)/Cube 0:** Measurement grid: dx=8mm, dy=8mm, dz=5mm

Reference Value = 14.580 V/m; Power Drift = -0.06 dB

Peak SAR (extrapolated) = 0.388 W/kg

**SAR(1 g) = 0.255 W/kg; SAR(10 g) = 0.158 W/kg**

Maximum value of SAR (measured) = 0.313 W/kg

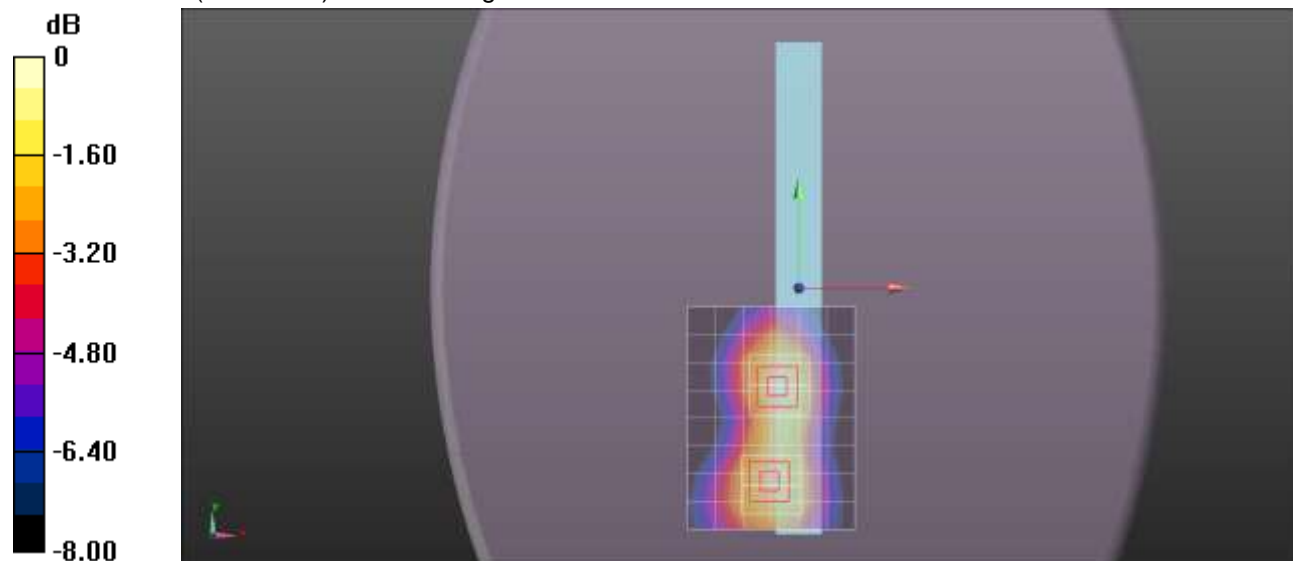
**Edge 1 Prox. Off/GPRS 2 Slots Ch 661/Zoom Scan (5x5x7)/Cube 1:** Measurement grid: dx=8mm, dy=8mm, dz=5mm

Reference Value = 14.580 V/m; Power Drift = -0.06 dB

Peak SAR (extrapolated) = 0.353 W/kg

**SAR(1 g) = 0.234 W/kg; SAR(10 g) = 0.149 W/kg**

Maximum value of SAR (measured) = 0.286 W/kg



0 dB = 0.286 W/kg = -5.44 dBW/kg

## GSM1900

Frequency: 1880 MHz; Duty Cycle: 1:4.00037; Room Ambient Temperature: 23.0°C; Liquid Temperature: 22.0°C  
 Medium parameters used:  $f = 1880 \text{ MHz}$ ;  $\sigma = 1.502 \text{ mho/m}$ ;  $\epsilon_r = 50.875$ ;  $\rho = 1000 \text{ kg/m}^3$

DASY5 Configuration:

- Area Scan Setting: Find Secondary Maximum Within: 2.0 dB and with a peak SAR value greater than 0.0012W/kg
- Electronics: DAE4 Sn1343; Calibrated: 8/20/2012
- Probe: EX3DV4 - SN3749; ConvF(6.99, 6.99, 6.99); Calibrated: 1/15/2013;
- Sensor-Surface: 2.5mm (Mechanical Surface Detection (Locations From Previous Scan Used)), Sensor-Surface: 2.5mm (Mechanical Surface Detection)
- Phantom: ELI v5.0 (A); Type: QDOVA001BB; Serial: 1119

**Edge 4 Prox. Off/GPRS 2 Slots Ch 661/Area Scan (7x9x1):** Measurement grid: dx=15mm, dy=15mm  
 Maximum value of SAR (measured) = 0.410 W/kg

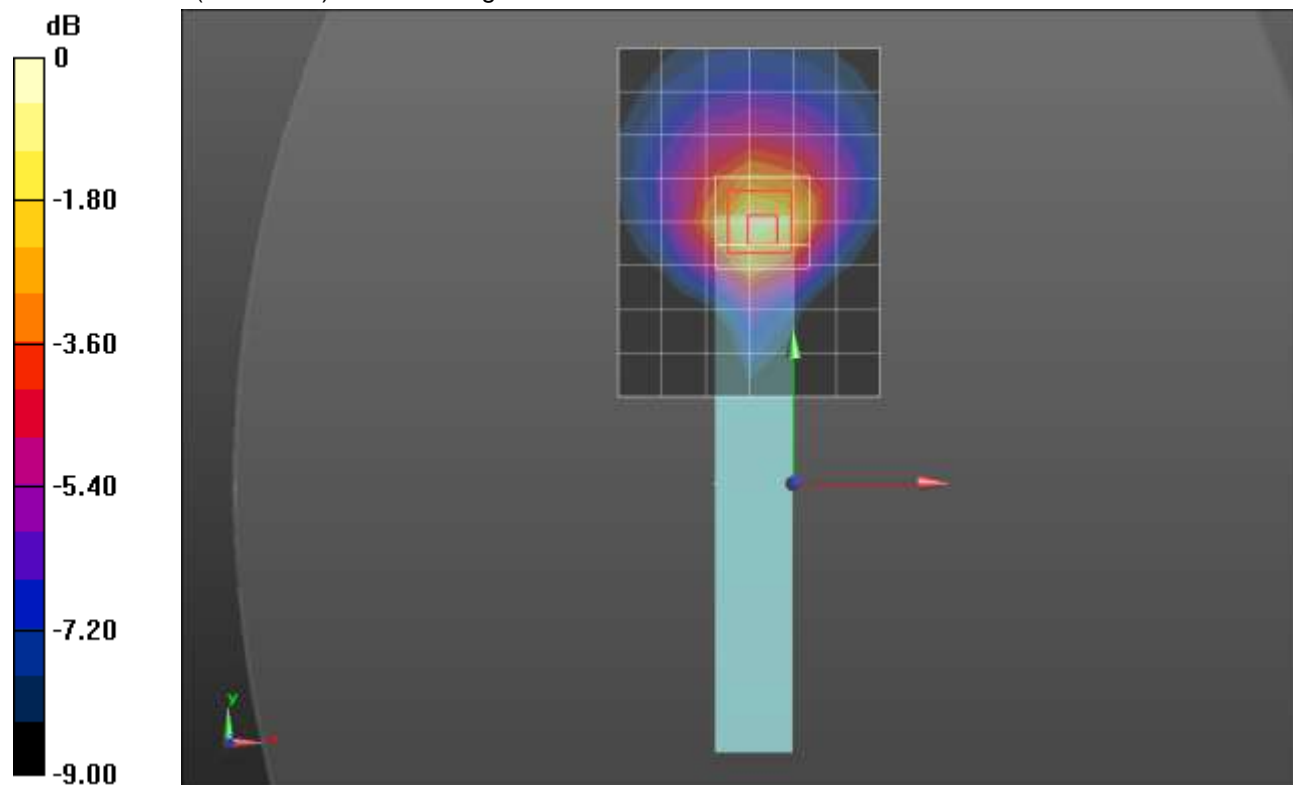
**Edge 4 Prox. Off/GPRS 2 Slots Ch 661/Zoom Scan (5x5x7)/Cube 0:** Measurement grid: dx=8mm, dy=8mm, dz=5mm

Reference Value = 16.957 V/m; Power Drift = -0.06 dB

Peak SAR (extrapolated) = 0.609 W/kg

**SAR(1 g) = 0.352 W/kg; SAR(10 g) = 0.197 W/kg**

Maximum value of SAR (measured) = 0.439 W/kg



0 dB = 0.439 W/kg = -3.58 dBW/kg