

GSM850

Frequency: 836.6 MHz; Duty Cycle: 1:4.00037; Room Ambient Temperature: 23.0°C; Liquid Temperature: 22.0°C
Medium parameters used (interpolated): $f = 836.6$ MHz; $\sigma = 1.018$ S/m; $\epsilon_r = 52.748$; $\rho = 1000$ kg/m³

DASY5 Configuration:

- Area Scan Setting: Find Secondary Maximum Within: 2.0 dB and with a peak SAR value greater than 0.0012W/kg
- Electronics: DAE4 Sn1258; Calibrated: 3/8/2012
- Probe: EX3DV4 - SN3749; ConvF(8.67, 8.67, 8.67); Calibrated: 1/15/2013;
- Sensor-Surface: 2.5mm (Mechanical Surface Detection (Locations From Previous Scan Used)), Sensor-Surface: 2.5mm (Mechanical Surface Detection)
- Phantom: ELI v5.0 (B); Type: QDOVA001BB; Serial: 1118

Rear Prox. On/GPRS 2 Slots Ch 190/Area Scan (7x9x1): Measurement grid: dx=15mm, dy=15mm

[Info: Interpolated medium parameters used for SAR evaluation.](#)

Maximum value of SAR (measured) = 0.375 W/kg

Rear Prox. On/GPRS 2 Slots Ch 190/Zoom Scan (5x5x7)/Cube 0: Measurement grid: dx=8mm, dy=8mm, dz=5mm

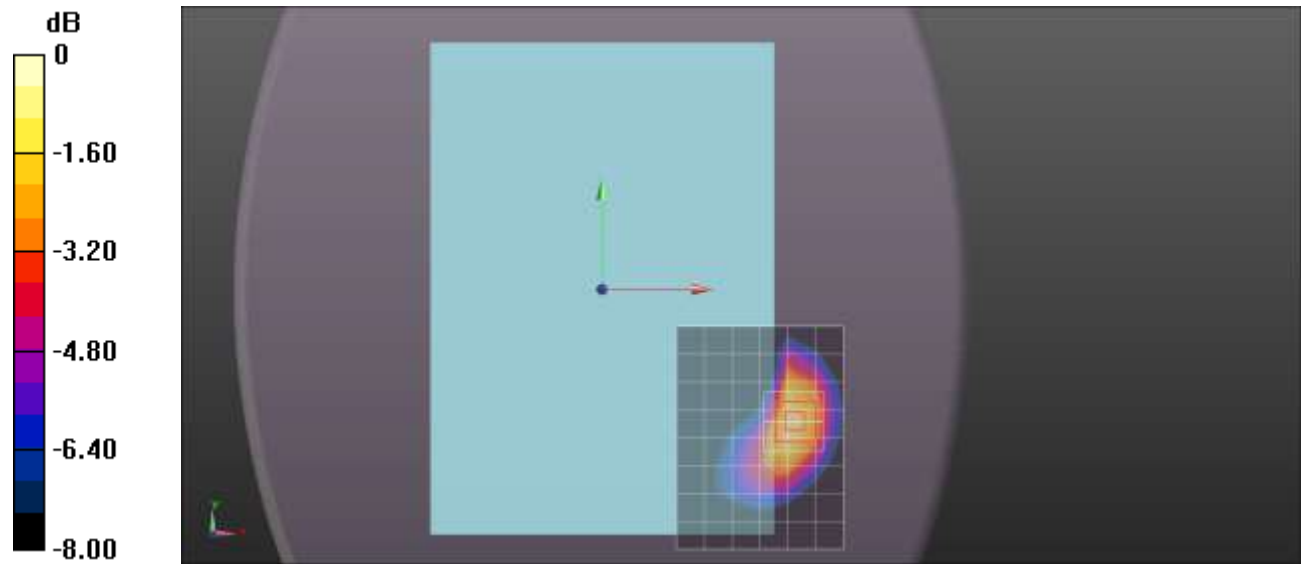
Reference Value = 19.158 V/m; Power Drift = 0.16 dB

Peak SAR (extrapolated) = 0.523 W/kg

SAR(1 g) = 0.324 W/kg; SAR(10 g) = 0.198 W/kg

[Info: Interpolated medium parameters used for SAR evaluation.](#)

Maximum value of SAR (measured) = 0.409 W/kg



0 dB = 0.409 W/kg = -3.88 dBW/kg

GSM850

Frequency: 824.4 MHz; Duty Cycle: 1:4.00037; Room Ambient Temperature: 23.0°C; Liquid Temperature: 22.0°C
Medium parameters used: $f = 825 \text{ MHz}$; $\sigma = 1.007 \text{ S/m}$; $\epsilon_r = 54.174$; $\rho = 1000 \text{ kg/m}^3$

DASY5 Configuration:

- Area Scan Setting: Find Secondary Maximum Within: 2.0 dB and with a peak SAR value greater than 0.0012W/kg
- Electronics: DAE4 Sn1259; Calibrated: 2/13/2012
- Probe: EX3DV4 - SN3686; ConvF(8.73, 8.73, 8.73); Calibrated: 2/16/2012;
- Sensor-Surface: 2.5mm (Mechanical Surface Detection (Locations From Previous Scan Used)), Sensor-Surface: 2.5mm (Mechanical Surface Detection)
- Phantom: ELI v5.0 (A); Type: QDOVA001BB; Serial: 1120

Edge 1 Prox. On/GPRS 2 Slots Ch 128/Area Scan (7x8x1): Measurement grid: $dx=15\text{mm}$, $dy=15\text{mm}$
Maximum value of SAR (measured) = 1.12 W/kg

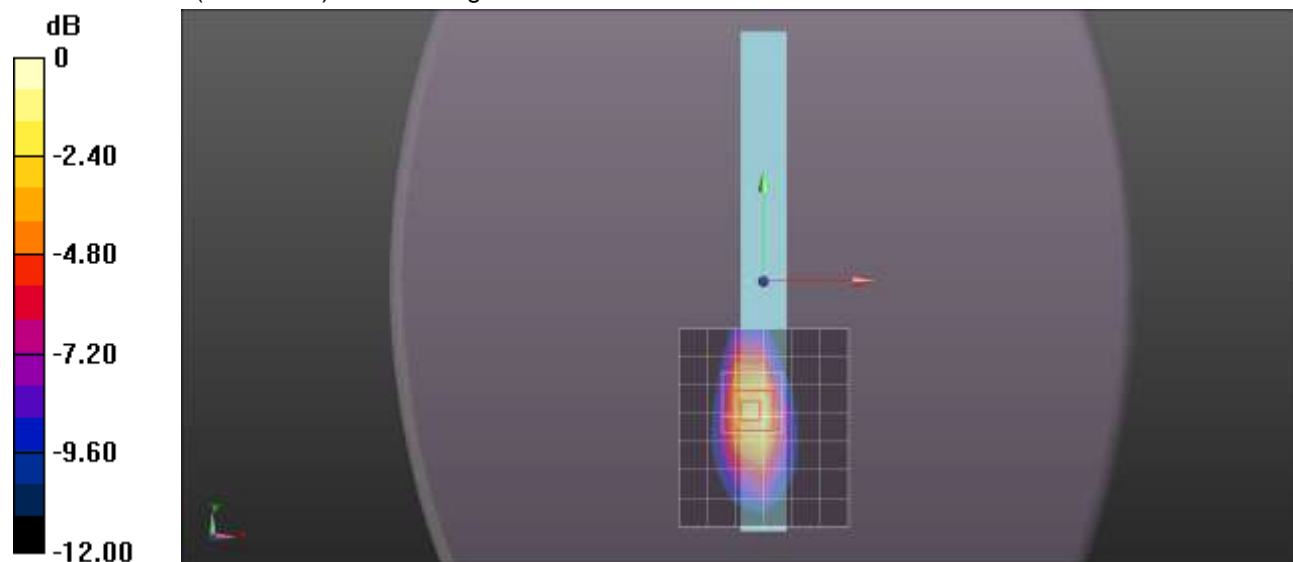
Edge 1 Prox. On/GPRS 2 Slots Ch 128/Zoom Scan (5x5x7)/Cube 0: Measurement grid: $dx=8\text{mm}$, $dy=8\text{mm}$, $dz=5\text{mm}$

Reference Value = 33.422 V/m; Power Drift = 0.03 dB

Peak SAR (extrapolated) = 2.02 W/kg

SAR(1 g) = 1.14 W/kg; SAR(10 g) = 0.632 W/kg

Maximum value of SAR (measured) = 1.51 W/kg



0 dB = 1.51 W/kg = 1.79 dBW/kg

GSM850

Frequency: 836.6 MHz; Duty Cycle: 1:4.00037; Room Ambient Temperature: 23.0°C; Liquid Temperature: 22.0°C
Medium parameters used (interpolated): $f = 836.6$ MHz; $\sigma = 1.019$ S/m; $\epsilon_r = 54.084$; $\rho = 1000$ kg/m³

DASY5 Configuration:

- Area Scan Setting: Find Secondary Maximum Within: 2.0 dB and with a peak SAR value greater than 0.0012W/kg
- Electronics: DAE4 Sn1259; Calibrated: 2/13/2012
- Probe: EX3DV4 - SN3686; ConvF(8.73, 8.73, 8.73); Calibrated: 2/16/2012;
- Sensor-Surface: 2.5mm (Mechanical Surface Detection (Locations From Previous Scan Used)), Sensor-Surface: 2.5mm (Mechanical Surface Detection)
- Phantom: ELI v5.0 (A); Type: QDOVA001BB; Serial: 1120

Edge 1 Prox. On/GPRS 2 Slots Ch190/Area Scan (7x8x1): Measurement grid: dx=15mm, dy=15mm

[Info: Interpolated medium parameters used for SAR evaluation.](#)

Maximum value of SAR (measured) = 1.23 W/kg

Edge 1 Prox. On/GPRS 2 Slots Ch190/Zoom Scan (5x5x7)/Cube 0: Measurement grid: dx=8mm, dy=8mm, dz=5mm

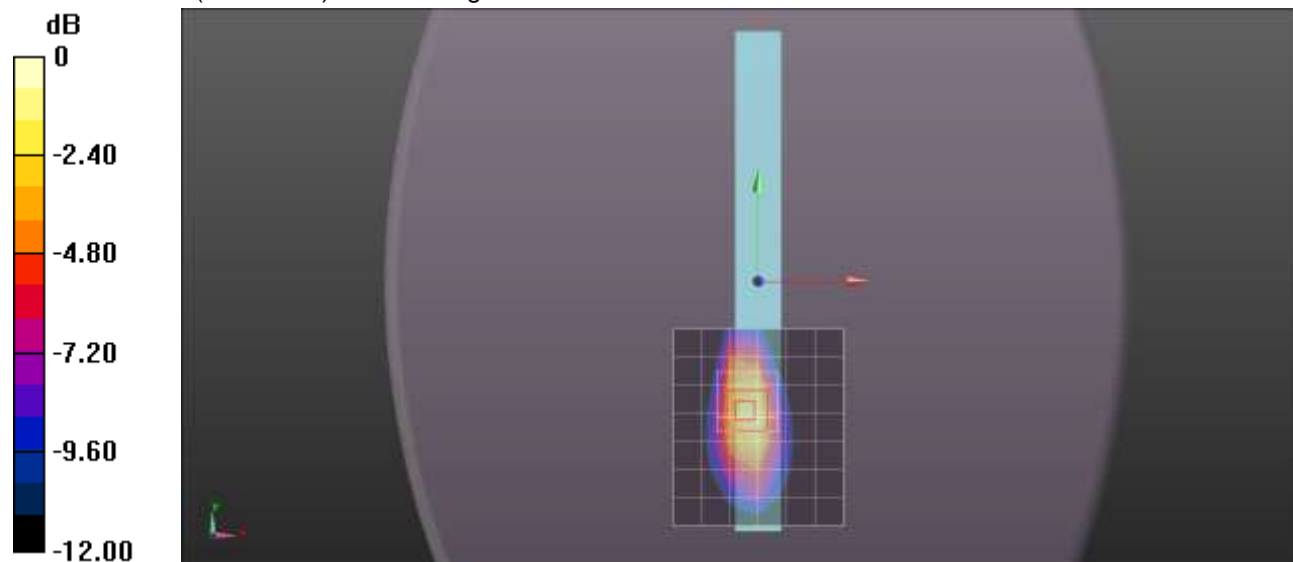
Reference Value = 33.673 V/m; Power Drift = 0.06 dB

Peak SAR (extrapolated) = 2.10 W/kg

SAR(1 g) = 1.19 W/kg; SAR(10 g) = 0.658 W/kg

[Info: Interpolated medium parameters used for SAR evaluation.](#)

Maximum value of SAR (measured) = 1.58 W/kg



0 dB = 1.58 W/kg = 1.99 dBW/kg

GSM850

Frequency: 848.8 MHz; Duty Cycle: 1:4.00037; Room Ambient Temperature: 23.0°C; Liquid Temperature: 22.0°C
Medium parameters used (interpolated): $f = 848.8$ MHz; $\sigma = 1.031$ S/m; $\epsilon_r = 53.927$; $\rho = 1000$ kg/m³

DASY5 Configuration:

- Area Scan Setting: Find Secondary Maximum Within: 2.0 dB and with a peak SAR value greater than 0.0012W/kg
- Electronics: DAE4 Sn1259; Calibrated: 2/13/2012
- Probe: EX3DV4 - SN3686; ConvF(8.73, 8.73, 8.73); Calibrated: 2/16/2012;
- Sensor-Surface: 2.5mm (Mechanical Surface Detection (Locations From Previous Scan Used)), Sensor-Surface: 2.5mm (Mechanical Surface Detection)
- Phantom: ELI v5.0 (A); Type: QDOVA001BB; Serial: 1120

Edge 1 Prox. On/GPRS 2 Slots Ch 251/Area Scan (7x8x1): Measurement grid: dx=15mm, dy=15mm

[Info: Interpolated medium parameters used for SAR evaluation.](#)

Maximum value of SAR (measured) = 1.39 W/kg

Edge 1 Prox. On/GPRS 2 Slots Ch 251/Zoom Scan (5x5x7)/Cube 0: Measurement grid: dx=8mm, dy=8mm, dz=5mm

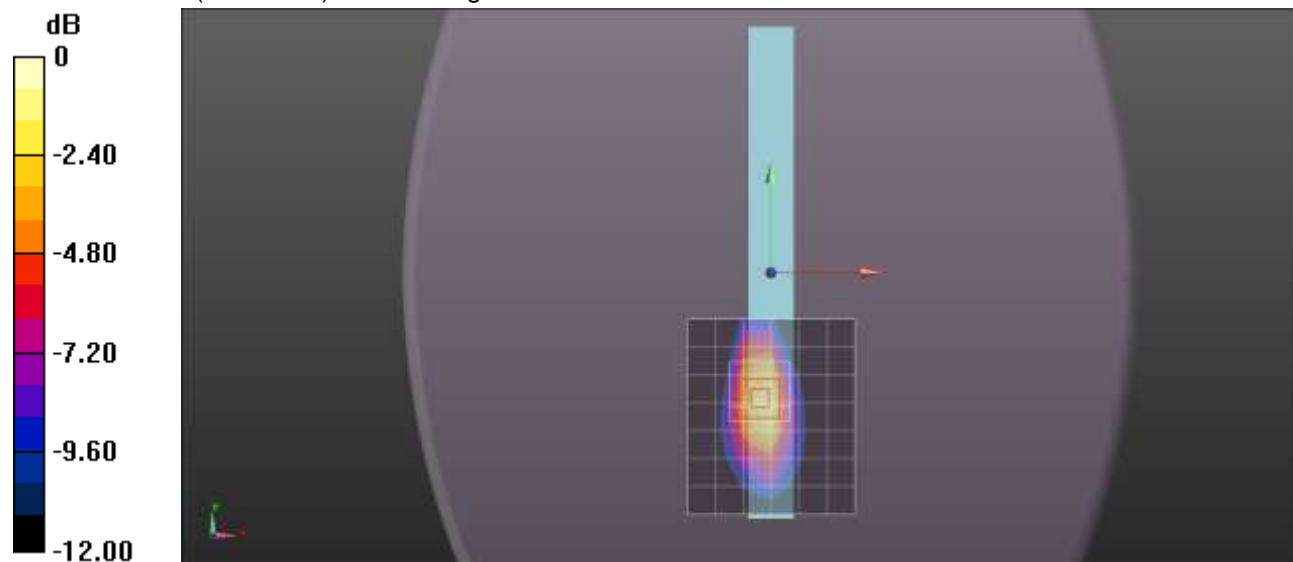
Reference Value = 36.870 V/m; Power Drift = 0.18 dB

Peak SAR (extrapolated) = 2.47 W/kg

SAR(1 g) = 1.37 W/kg; SAR(10 g) = 0.754 W/kg

[Info: Interpolated medium parameters used for SAR evaluation.](#)

Maximum value of SAR (measured) = 1.82 W/kg



0 dB = 1.82 W/kg = 2.60 dBW/kg

GSM850

Frequency: 824.4 MHz; Duty Cycle: 1:4.00037; Room Ambient Temperature: 23.0°C; Liquid Temperature: 22.0°C
 Medium parameters used: $f = 825 \text{ MHz}$; $\sigma = 1.01 \text{ mho/m}$; $\epsilon_r = 55.413$; $\rho = 1000 \text{ kg/m}^3$

DASY5 Configuration:

- Area Scan Setting: Find Secondary Maximum Within: 2.0 dB and with a peak SAR value greater than 0.0012W/kg
- Electronics: DAE4 Sn1343; Calibrated: 8/20/2012
- Probe: EX3DV4 - SN3749; ConvF(8.67, 8.67, 8.67); Calibrated: 1/15/2013;
- Sensor-Surface: 2.5mm (Mechanical Surface Detection (Locations From Previous Scan Used)), Sensor-Surface: 2.5mm (Mechanical Surface Detection)
- Phantom: ELI v5.0 (B); Type: QDOVA001BB; Serial: 1118

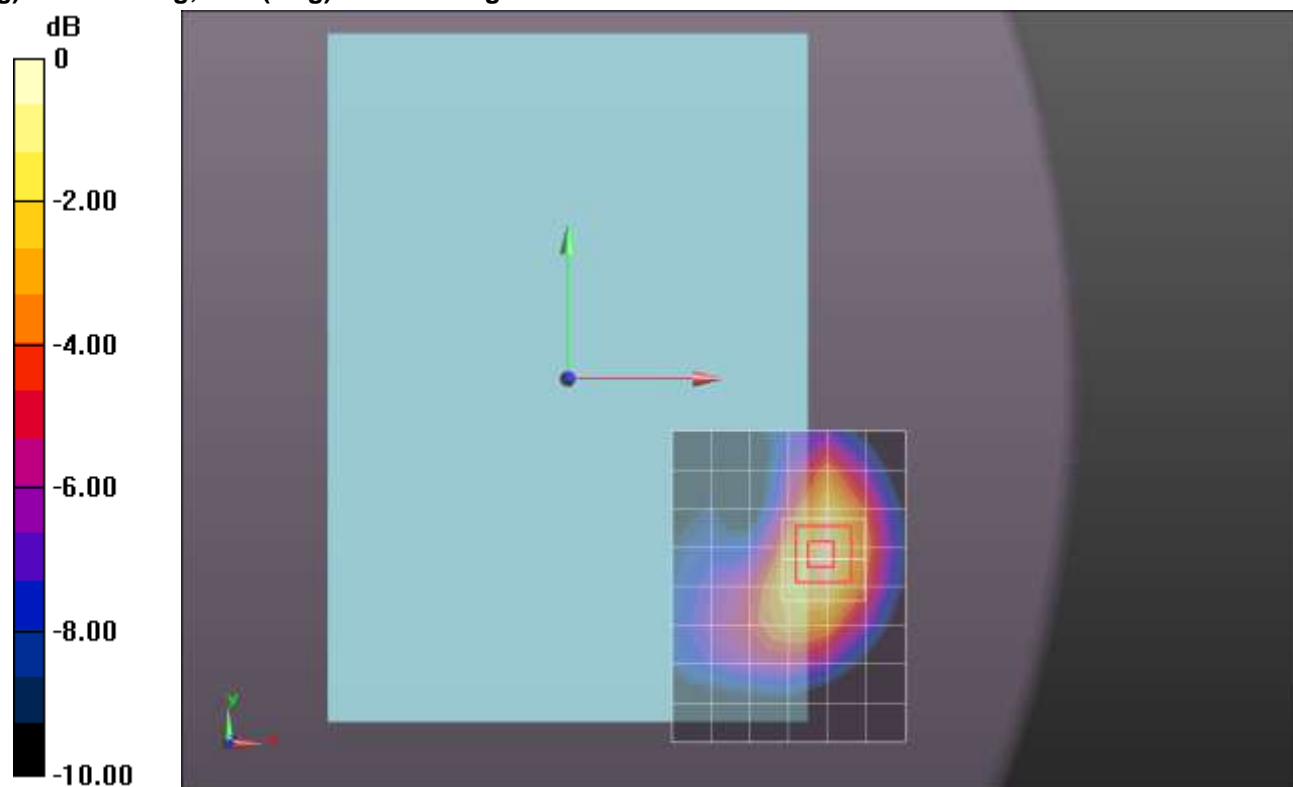
Rear Prox. Off/GPRS 2 Slots Ch 128/Area Scan (7x9x1): Measurement grid: $dx=15\text{mm}$, $dy=15\text{mm}$
 Maximum value of SAR (measured) = 1.15 W/kg

Rear Prox. Off/GPRS 2 Slots Ch 128/Zoom Scan (5x5x7)/Cube 0: Measurement grid: $dx=8\text{mm}$, $dy=8\text{mm}$, $dz=5\text{mm}$

Reference Value = 33.719 V/m; Power Drift = -0.01 dB

Peak SAR (extrapolated) = 1.41 W/kg

SAR(1 g) = 0.948 W/kg; SAR(10 g) = 0.607 W/kg



0 dB = 1.15 W/kg = 0.61 dBW/kg

GSM850

Frequency: 836.6 MHz; Duty Cycle: 1:4.00037; Room Ambient Temperature: 23.0°C; Liquid Temperature: 22.0°C
 Medium parameters used (interpolated): $f = 836.6$ MHz; $\sigma = 1.02$ mho/m; $\epsilon_r = 55.318$; $\rho = 1000$ kg/m³

DASY5 Configuration:

- Area Scan Setting: Find Secondary Maximum Within: 2.0 dB and with a peak SAR value greater than 0.0012W/kg
- Electronics: DAE4 Sn1343; Calibrated: 8/20/2012
- Probe: EX3DV4 - SN3749; ConvF(8.67, 8.67, 8.67); Calibrated: 1/15/2013;
- Sensor-Surface: 2.5mm (Mechanical Surface Detection)
- Phantom: ELI v5.0 (B); Type: QDOVA001BB; Serial: 1118

Rear Prox. Off/GPRS 2 Slots Ch 190/Area Scan (7x9x1): Measurement grid: dx=15mm, dy=15mm

[Info: Interpolated medium parameters used for SAR evaluation.](#)

Maximum value of SAR (measured) = 1.22 W/kg

Rear Prox. Off/GPRS 2 Slots Ch 190/Zoom Scan (5x5x7)/Cube 0: Measurement grid: dx=8mm, dy=8mm, dz=5mm

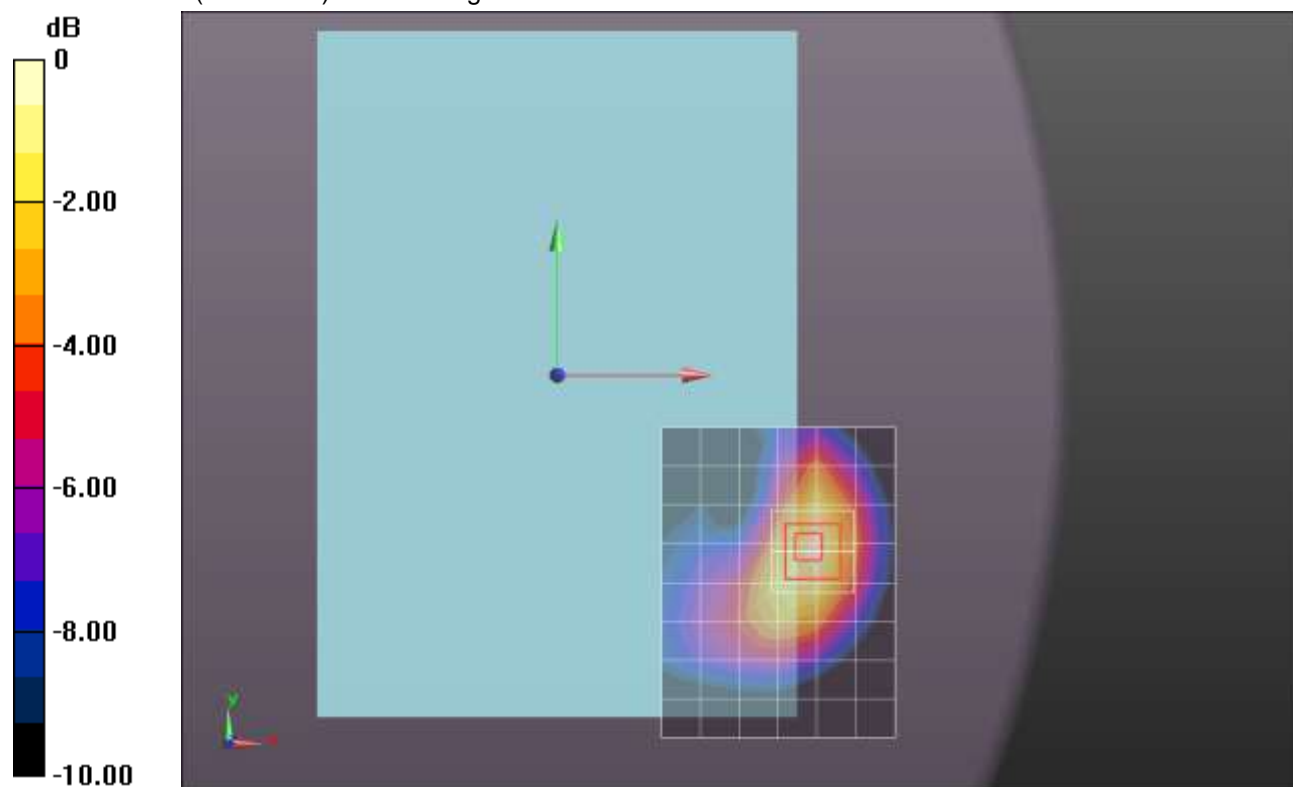
Reference Value = 34.887 V/m; Power Drift = -0.01 dB

Peak SAR (extrapolated) = 3.76 W/kg

SAR(1 g) = 1.05 W/kg; SAR(10 g) = 0.661 W/kg

[Info: Interpolated medium parameters used for SAR evaluation.](#)

Maximum value of SAR (measured) = 1.25 W/kg



0 dB = 1.25 W/kg = 0.97 dBW/kg

GSM850

Frequency: 848.8 MHz; Duty Cycle: 1:4.00037; Room Ambient Temperature: 23.0°C; Liquid Temperature: 22.0°C
 Medium parameters used (interpolated): $f = 848.8$ MHz; $\sigma = 1.032$ mho/m; $\epsilon_r = 55.205$; $\rho = 1000$ kg/m³

DASY5 Configuration:

- Area Scan Setting: Find Secondary Maximum Within: 2.0 dB and with a peak SAR value greater than 0.0012W/kg
- Electronics: DAE4 Sn1343; Calibrated: 8/20/2012
- Probe: EX3DV4 - SN3749; ConvF(8.67, 8.67, 8.67); Calibrated: 1/15/2013;
- Sensor-Surface: 2.5mm (Mechanical Surface Detection (Locations From Previous Scan Used)), Sensor-Surface: 2.5mm (Mechanical Surface Detection)
- Phantom: ELI v5.0 (B); Type: QDOVA001BB; Serial: 1118

Rear Prox. Off/GPRS 2 Slots Ch 251/Area Scan (7x9x1): Measurement grid: dx=15mm, dy=15mm

[Info: Interpolated medium parameters used for SAR evaluation.](#)

Maximum value of SAR (measured) = 1.11 W/kg

Rear Prox. Off/GPRS 2 Slots Ch 251/Zoom Scan (5x5x7)/Cube 0: Measurement grid: dx=8mm, dy=8mm, dz=5mm

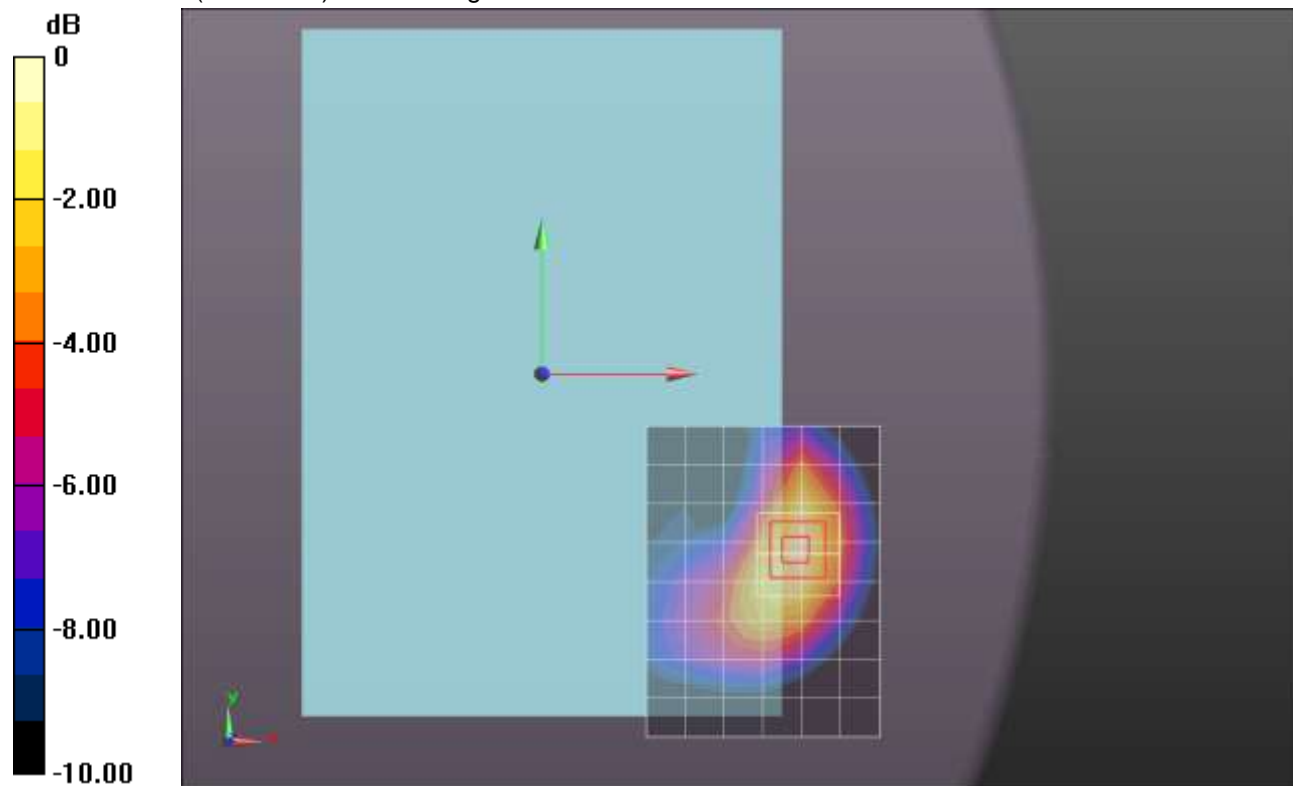
Reference Value = 33.230 V/m; Power Drift = -0.01 dB

Peak SAR (extrapolated) = 1.43 W/kg

SAR(1 g) = 0.937 W/kg; SAR(10 g) = 0.597 W/kg

[Info: Interpolated medium parameters used for SAR evaluation.](#)

Maximum value of SAR (measured) = 1.14 W/kg



0 dB = 1.14 W/kg = 0.57 dBW/kg

GSM850

Frequency: 836.6 MHz; Duty Cycle: 1:4.00037; Room Ambient Temperature: 23.0°C; Liquid Temperature: 22.0°C
Medium parameters used (interpolated): $f = 836.6$ MHz; $\sigma = 1.019$ S/m; $\epsilon_r = 54.084$; $\rho = 1000$ kg/m³

DASY5 Configuration:

- Area Scan Setting: Find Secondary Maximum Within: 2.0 dB and with a peak SAR value greater than 0.0012W/kg
- Electronics: DAE4 Sn1259; Calibrated: 2/13/2012
- Probe: EX3DV4 - SN3686; ConvF(8.73, 8.73, 8.73); Calibrated: 2/16/2012;
- Sensor-Surface: 2.5mm (Mechanical Surface Detection)
- Phantom: ELI v5.0 (A); Type: QDOVA001BB; Serial: 1120

Edge 1 Prox. Off/GPRS 2 Slots Ch 190/Area Scan (8x8x1): Measurement grid: dx=15mm, dy=15mm

[Info: Interpolated medium parameters used for SAR evaluation.](#)

Maximum value of SAR (measured) = 0.409 W/kg

Edge 1 Prox. Off/GPRS 2 Slots Ch 190/Zoom Scan (5x5x7)/Cube 0: Measurement grid: dx=8mm, dy=8mm, dz=5mm

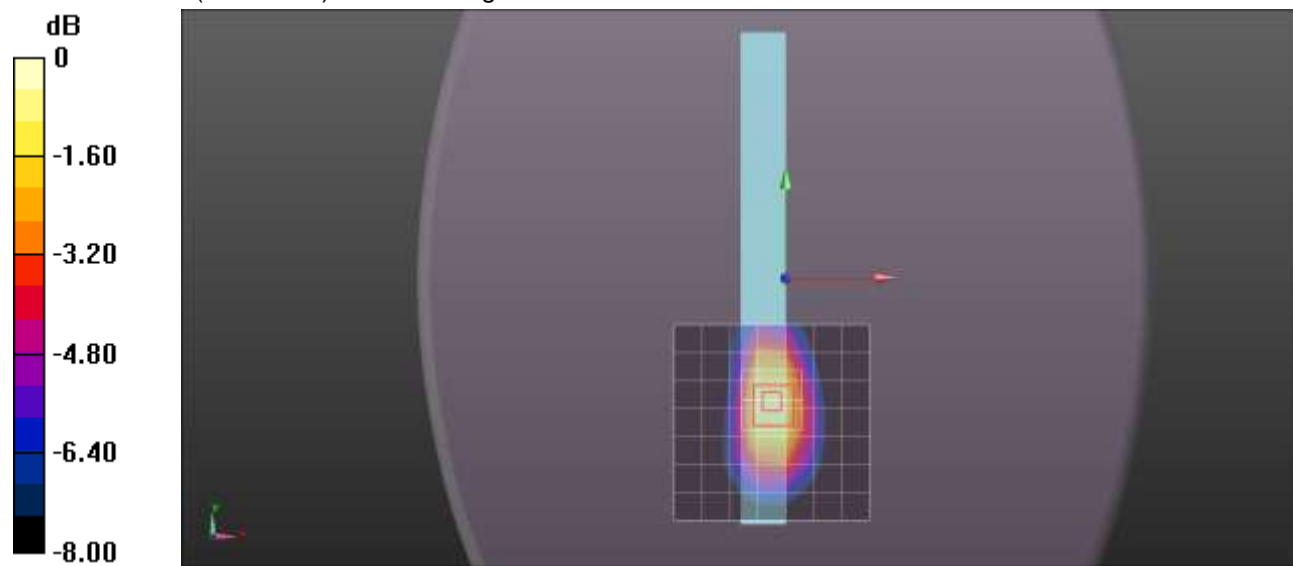
Reference Value = 20.289 V/m; Power Drift = 0.11 dB

Peak SAR (extrapolated) = 0.578 W/kg

SAR(1 g) = 0.385 W/kg; SAR(10 g) = 0.259 W/kg

[Info: Interpolated medium parameters used for SAR evaluation.](#)

Maximum value of SAR (measured) = 0.466 W/kg



0 dB = 0.466 W/kg = -3.32 dBW/kg

GSM850

Frequency: 836.6 MHz; Duty Cycle: 1:4.00037; Room Ambient Temperature: 23.0°C; Liquid Temperature: 22.0°C
Medium parameters used (interpolated): $f = 836.6$ MHz; $\sigma = 1.018$ S/m; $\epsilon_r = 52.748$; $\rho = 1000$ kg/m³

DASY5 Configuration:

- Area Scan Setting: Find Secondary Maximum Within: 2.0 dB and with a peak SAR value greater than 0.0012W/kg
- Electronics: DAE4 Sn1258; Calibrated: 3/8/2012
- Probe: EX3DV4 - SN3749; ConvF(8.67, 8.67, 8.67); Calibrated: 1/15/2013;
- Sensor-Surface: 2.5mm (Mechanical Surface Detection)
- Phantom: ELI v5.0 (B); Type: QDOVA001BB; Serial: 1118

Edge 4 Prox. Off/GPRS 2 Slots Ch 190/Area Scan (7x7x1): Measurement grid: dx=15mm, dy=15mm

[Info: Interpolated medium parameters used for SAR evaluation.](#)

Maximum value of SAR (measured) = 0.444 W/kg

Edge 4 Prox. Off/GPRS 2 Slots Ch 190/Zoom Scan (5x5x7)/Cube 0: Measurement grid: dx=8mm, dy=8mm, dz=5mm

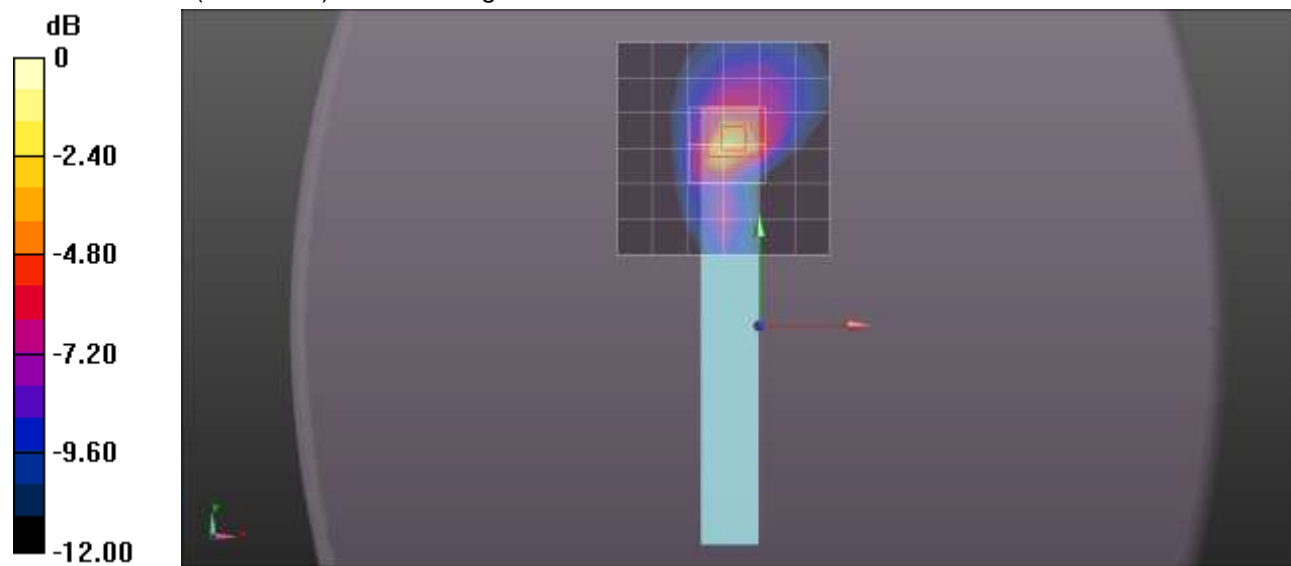
Reference Value = 21.145 V/m; Power Drift = 0.05 dB

Peak SAR (extrapolated) = 1.01 W/kg

SAR(1 g) = 0.324 W/kg; SAR(10 g) = 0.130 W/kg

[Info: Interpolated medium parameters used for SAR evaluation.](#)

Maximum value of SAR (measured) = 0.583 W/kg



0 dB = 0.583 W/kg = -2.34 dBW/kg