



SAR TEST RESULTS ADDENDUM

To

Report Number: 12J14610-1B

Date: 1/18/2013

For

Modem

(Tested inside of Panasonic Laptop PC CF-C2)

Model: WW12E

FCC ID: ACJ9TGWW12E

Prepared by

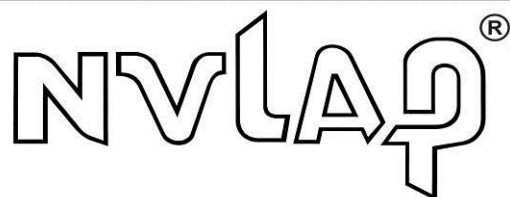
UL CCS

47173 BENICIA STREET

FREMONT, CA 94538, U.S.A.

TEL: (510) 771-1000

FAX: (510) 661-0888



NVLAP LAB CODE 200065-0

1. SAR Test Results

Measurement was performed on the highest measured SAR for Rear configuration in each frequency band only.

GSM850

Test Position	Dist. (mm)	Prox. Sensor Status	Mode	Ch #.	Freq. (MHz)	Power (dBm)		1-g SAR (W/kg)		Plot Page No.	Note
						Tune-Up Limit	Meas.	Meas.	Scaled		
Rear	0	Off	GPRS 2 slots	128	824.2	32.6	31.3				
				190	836.6	32.6	31.4	0.872	1.155	2	
				251	848.8	32.6	31.3				

W-CDMA Band II

Test Position	Dist. (mm)	Prox. Sensor Status	Mode	Ch #.	Freq. (MHz)	Power (dBm)		1-g SAR (W/kg)		Plot Page No.	Note
						Tune-Up Limit	Meas.	Meas.	Scaled		
Rear	0	Off	Rel 99 RMC 12.2kbps	9262	1852.4	25.2	24.5				
				9400	1880	25.2	24.7	0.189	0.212	3	
				9538	1907.6	25.2	24.4				

W-CDMA Band IV

Test Position	Dist. (mm)	Prox. Sensor Status	Mode	Ch #.	Freq. (MHz)	Power (dBm)		1-g SAR (W/kg)		Plot Page No.	Note
						Tune-Up Limit	Meas.	Meas.	Scaled		
Rear	0	Off	Rel 99 RMC 12.2kbps	1312	1712.4	25.2	24.2				
				1413	1732.6	25.2	24.2	0.307	0.384	4	
				1513	1752.6	25.2	24.2				

2. SAR Test Plots

Test Laboratory: UL CCS SAR Lab A

Date: 1/15/2013

GPRS 850

Frequency: 836.6 MHz; Duty Cycle: 1:4.00037; Room Ambient Temperature: 24.0°C; Liquid Temperature: 23.0°C
Medium parameters used (interpolated): $f = 836.6$ MHz; $\sigma = 1.025$ mho/m; $\epsilon_r = 53.566$; $\rho = 1000$ kg/m³

DASY5 Configuration:

- Area Scan Setting: Find Secondary Maximum Within: 2.0 dB and with a peak SAR value greater than 0.0012W/kg
- Electronics: DAE4 Sn1258; Calibrated: 3/8/2012
- Probe: EX3DV4 - SN3772; ConvF(8.89, 8.89, 8.89); Calibrated: 2/16/2012;
- Sensor-Surface: 2.5mm (Mechanical Surface Detection (Locations From Previous Scan Used)), Sensor-Surface: 2.5mm (Mechanical Surface Detection)
- Phantom: ELI v5.0 (B); Type: QDOVA00EB; Serial: 1099

Rear/Prox off_2 Slots_Ch 190/Area Scan (8x9x1): Measurement grid: dx=15mm, dy=15mm

[Info: Interpolated medium parameters used for SAR evaluation.](#)

Maximum value of SAR (measured) = 1.05 W/kg

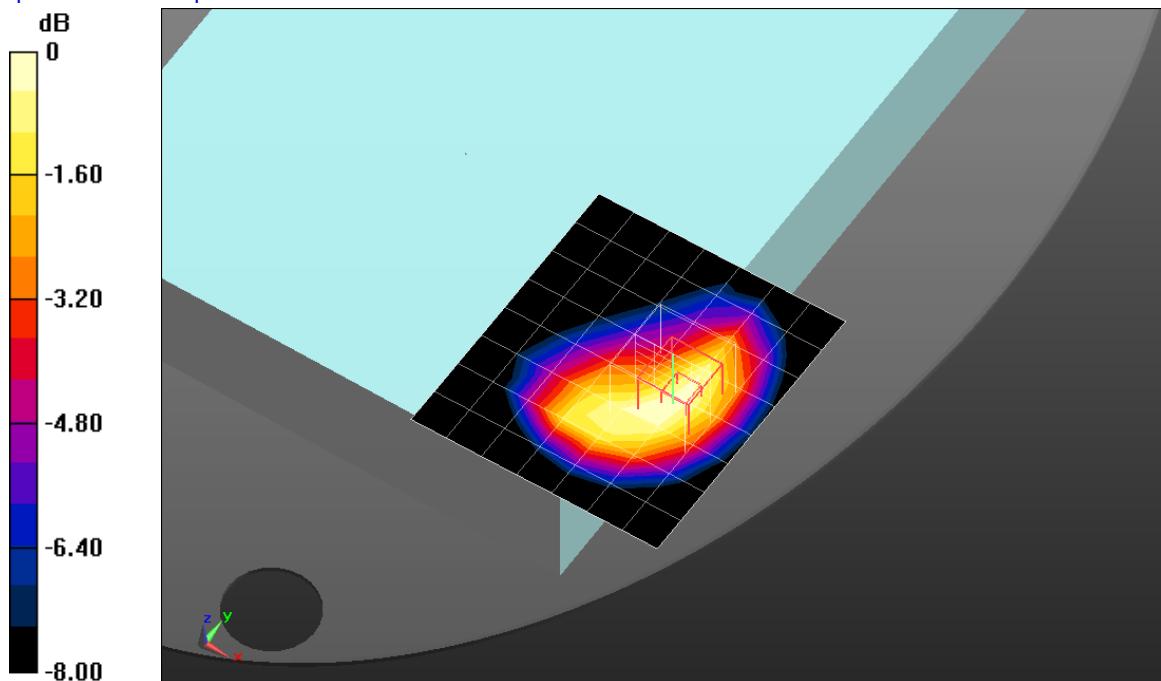
Rear/Prox off_2 Slots_Ch 190/Zoom Scan (5x5x7)/Cube 0: Measurement grid: dx=8mm, dy=8mm, dz=5mm

Reference Value = 32.279 V/m; Power Drift = -0.05 dB

Peak SAR (extrapolated) = 1.26 W/kg

SAR(1 g) = 0.872 W/kg; SAR(10 g) = 0.579 W/kg

[Info: Interpolated medium parameters used for SAR evaluation.](#)



0 dB = 1.05 W/kg = 0.21 dBW/kg

W-CDMA Band II

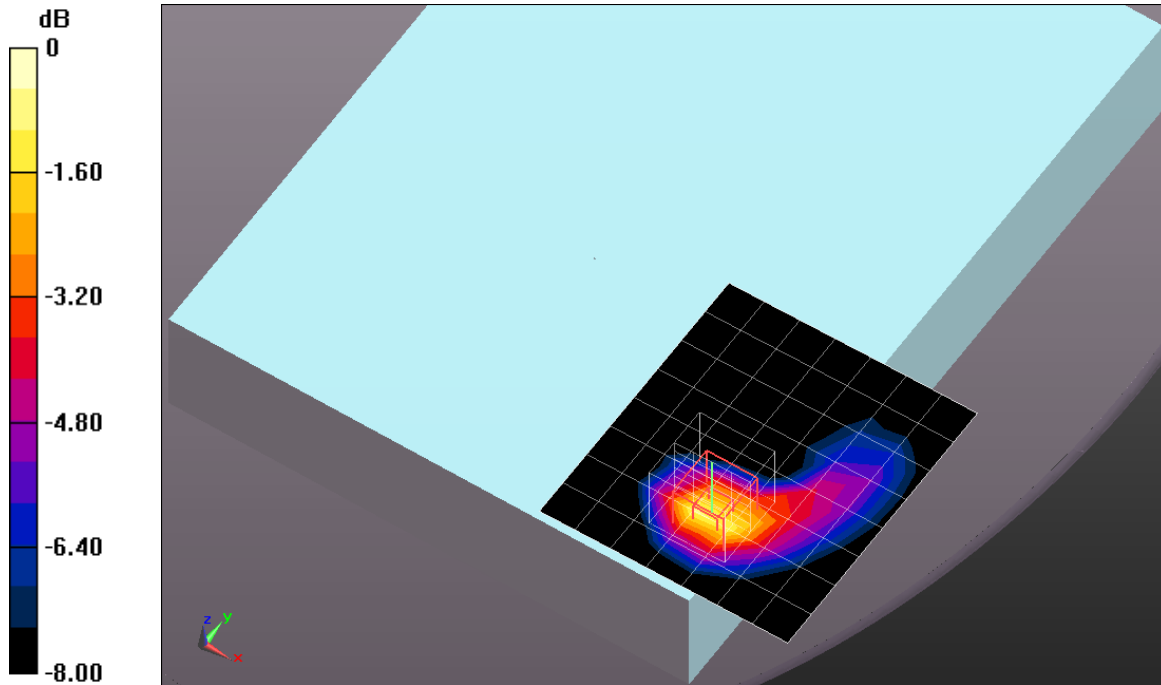
Frequency: 1880 MHz; Duty Cycle: 1:1; Room Ambient Temperature: 24.0°C; Liquid Temperature: 23.0°C
Medium parameters used: $f = 1880$ MHz; $\sigma = 1.487$ mho/m; $\epsilon_r = 51.169$; $\rho = 1000$ kg/m³

DASY5 Configuration:

- Area Scan Setting: Find Secondary Maximum Within: 2.0 dB and with a peak SAR value greater than 0.0012W/kg
- Electronics: DAE4 Sn1352; Calibrated: 10/8/2012
- Probe: EX3DV4 - SN3885; ConvF(7.67, 7.67, 7.67); Calibrated: 10/9/2012;
- Sensor-Surface: 2.5mm (Mechanical Surface Detection (Locations From Previous Scan Used)), Sensor-Surface: 2.5mm (Mechanical Surface Detection)
- Phantom: ELI v5.0 (B); Type: QDOVA001BB; Serial: 1118

Rear/Prox off_Rel99 RMC 12.2kbps_Ch 9400 2/Area Scan (8x9x1): Measurement grid: dx=15mm, dy=15mm
Maximum value of SAR (measured) = 0.207 W/kg

Rear/Prox off_Rel99 RMC 12.2kbps_Ch 9400 2/Zoom Scan (5x5x7)/Cube 0: Measurement grid: dx=8mm, dy=8mm, dz=5mm
Reference Value = 12.200 V/m; Power Drift = -0.04 dB
Peak SAR (extrapolated) = 0.330 W/kg
SAR(1 g) = 0.189 W/kg; SAR(10 g) = 0.103 W/kg
Maximum value of SAR (measured) = 0.253 W/kg



0 dB = 0.253 W/kg = -5.97 dBW/kg

W-CDMA Band IV

Frequency: 1732.6 MHz; Duty Cycle: 1:1; Room Ambient Temperature: 24.0°C; Liquid Temperature: 23.0°C
Medium parameters used (interpolated): $f = 1732.6$ MHz; $\sigma = 1.514$ mho/m; $\epsilon_r = 51.318$; $\rho = 1000$ kg/m³

DASY5 Configuration:

- Area Scan Setting: Find Secondary Maximum Within: 2.0 dB and with a peak SAR value greater than 0.0012W/kg
- Electronics: DAE4 Sn1352; Calibrated: 10/8/2012
- Probe: EX3DV4 - SN3885; ConvF(8.03, 8.03, 8.03); Calibrated: 10/9/2012;
- Sensor-Surface: 2.5mm (Mechanical Surface Detection)
- Phantom: ELI v5.0 (B); Type: QDOVA001BB; Serial: 1118

Rear/Prox off_Rel 99 RMC 12.2kbps_Ch 1413/Area Scan (8x9x1): Measurement grid: dx=15mm, dy=15mm

[Info: Interpolated medium parameters used for SAR evaluation.](#)

Maximum value of SAR (measured) = 0.391 W/kg

Rear/Prox off_Rel 99 RMC 12.2kbps_Ch 1413/Zoom Scan (5x5x7)/Cube 0: Measurement grid:

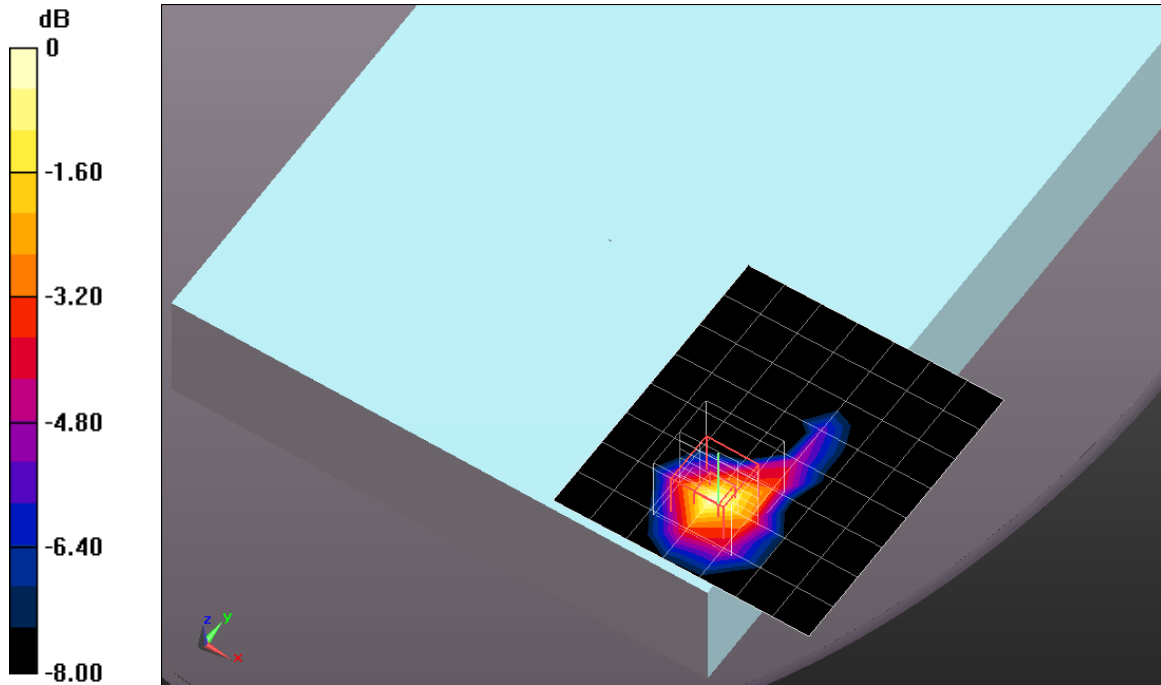
dx=8mm, dy=8mm, dz=5mm

Reference Value = 16.505 V/m; Power Drift = 0.07 dB

Peak SAR (extrapolated) = 0.514 W/kg

SAR(1 g) = 0.307 W/kg; SAR(10 g) = 0.168 W/kg

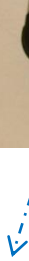
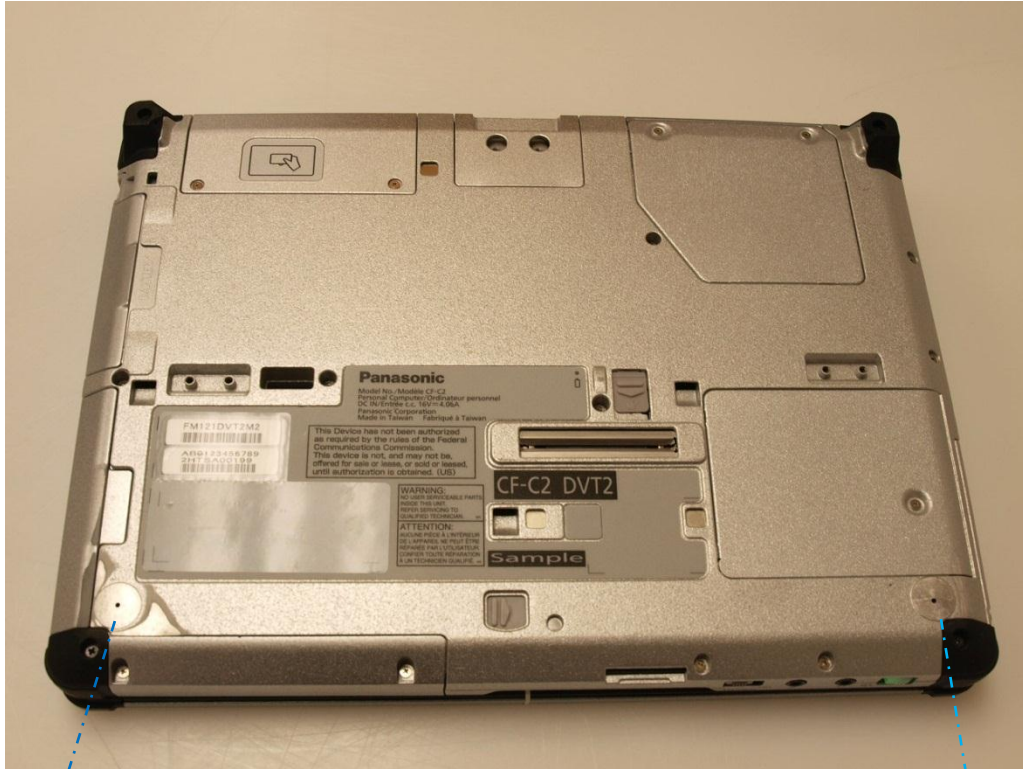
[Info: Interpolated medium parameters used for SAR evaluation.](#)



0 dB = 0.391 W/kg = -4.08 dBW/kg

3. External Photo

Tablet Mode Rear with Front Feet removed



4. Set-up Photo

Rear with 0 mm Separation Distance



END OF REPORT