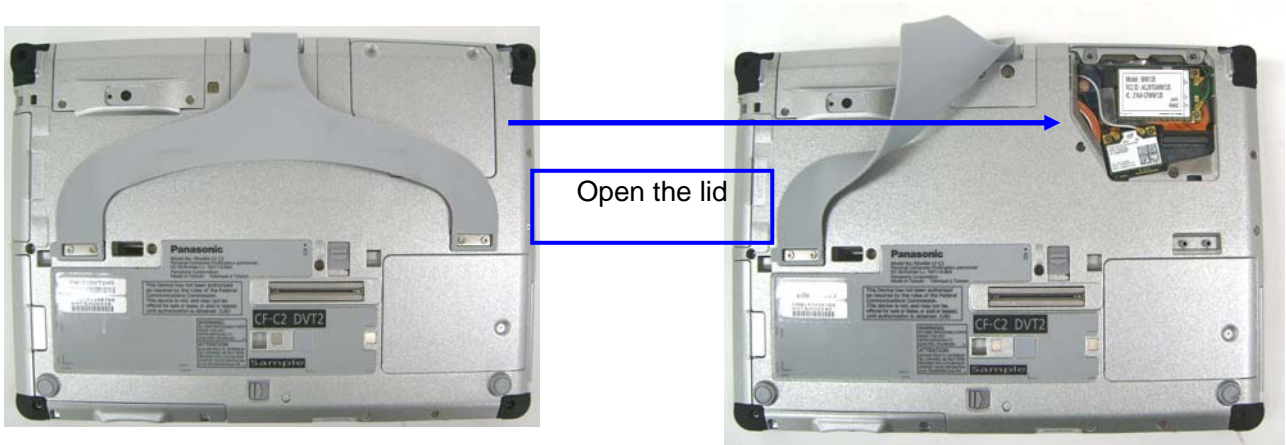


< CF-C2 with WLAN/BT (Model: WL12A) +WWAN (Model: WW12E) photos>

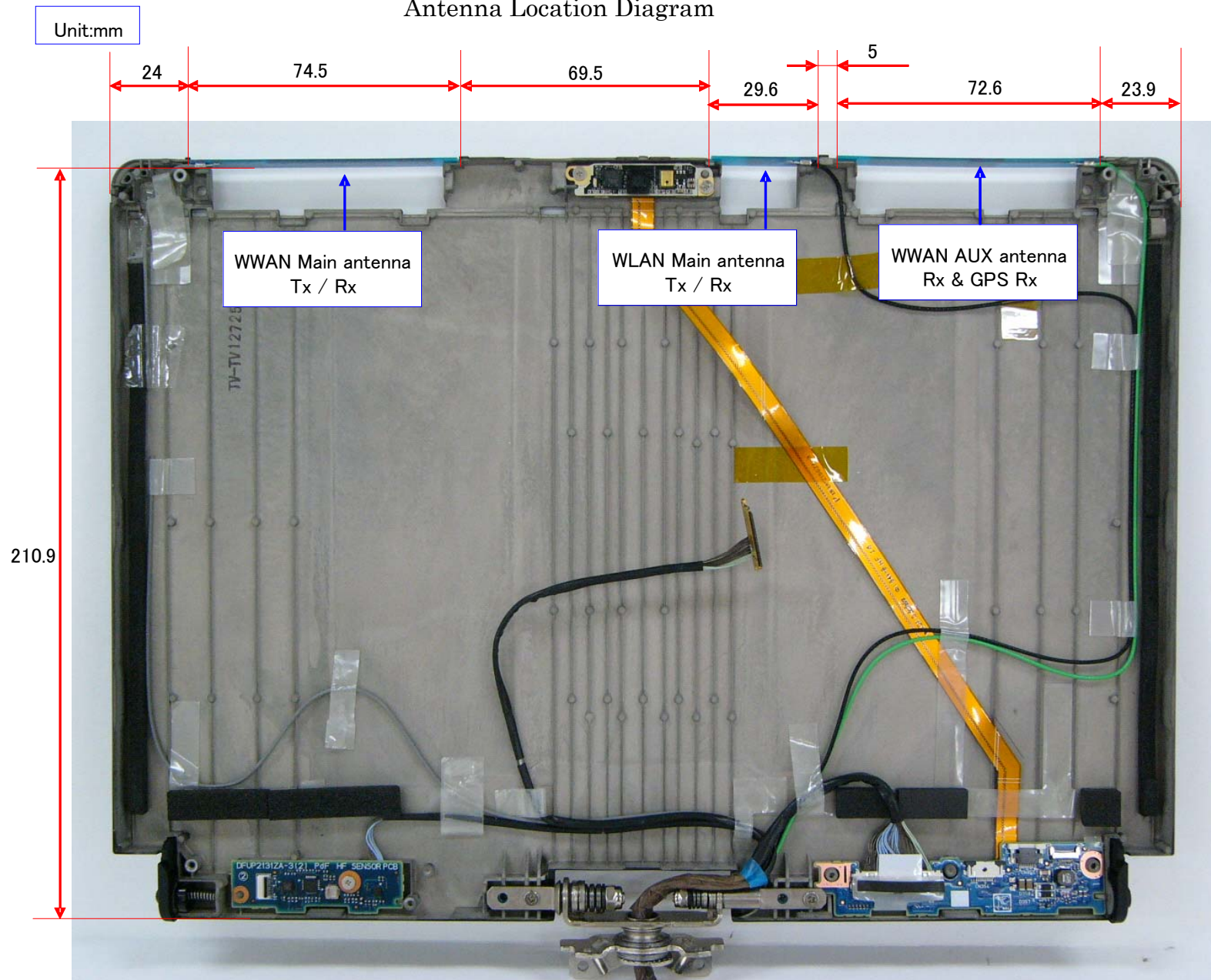
1. Module Location

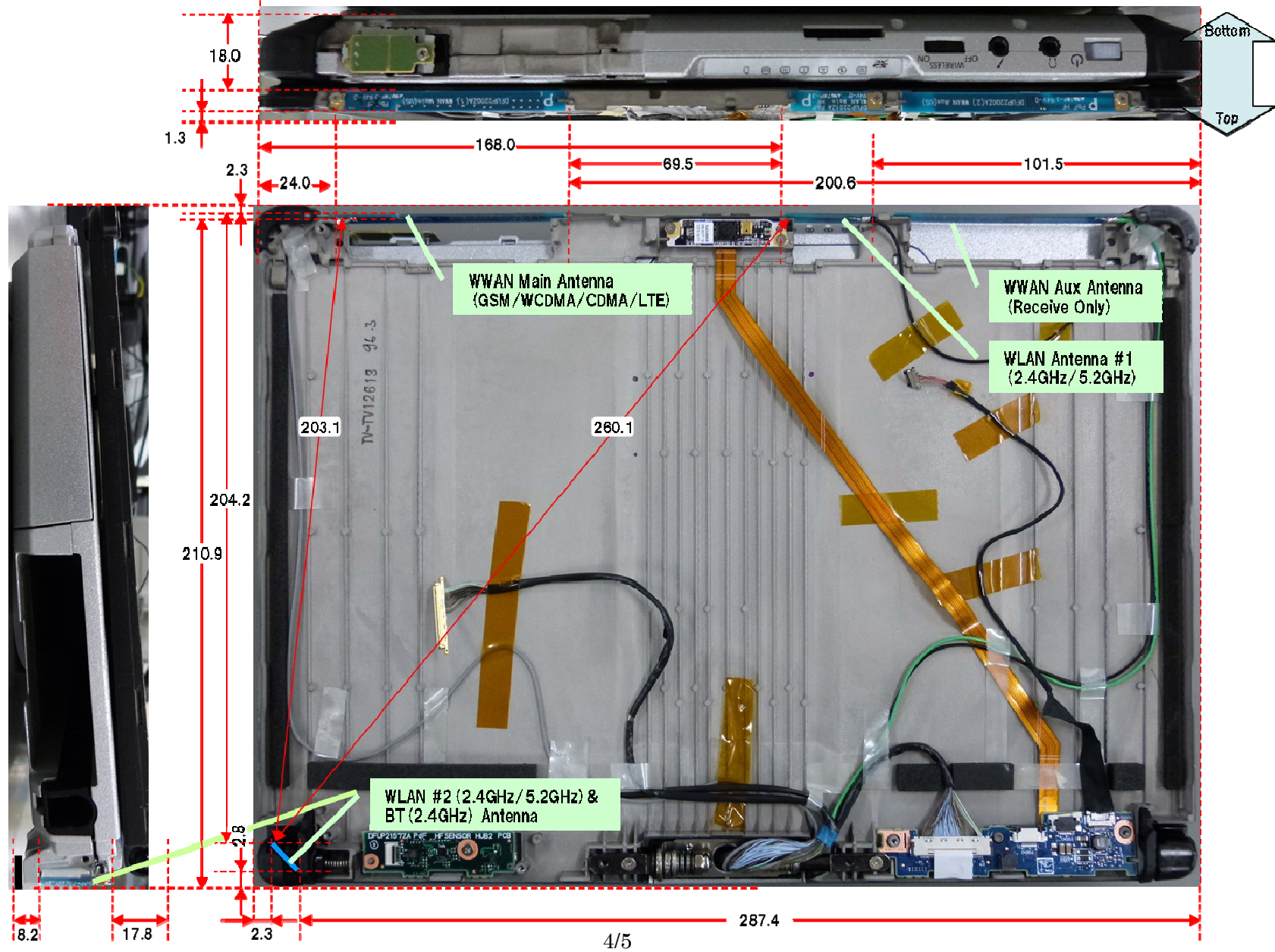


WLAN/BT Module
Model: WL12A
FCC ID: ACJ9TGWL12A
IC: 216A-CFWL12A

WWAN Module

Antenna Location Diagram





3. Antenna Specification

WWAN Main TX/RX Antenna:

Type: PIFA
Gain: -2.48dBi max 850MHz
-2.06dBi max 1900MHz
2.07dBi max 1710-1785MHz

WWAN Aux RX Antenna (RX only)

Type: PIFA

WLAN Main TX/RX Antenna:

Type: PIFA
Gain: -1.28dBi max 2.4GHz
-0.29dBi max 5.18-5.32GHz
-1.53dBi max 5.50-5.70GHz
-2.35dBi max 5.700-5.825GHz

WLAN Aux TX/RX Antenna:

Type: PIFA
Gain: 0.02dBi max 2.4GHz
2.95dBi max 5.18-5.32GHz
0.72dBi max 5.50-5.70GHz
0.72dBi max 5.700-5.825GHz

Bluetooth TX/RX Antenna:

Type: PIFA
Gain: -1.28dBi max