



SAR TEST RESULTS ADDENDUM

To

Report Number: 12J14608-01

Date: 1/18/2013

For

Modem

(Tested inside of Panasonic Laptop PC CF-C2)

Model: WW12C

FCC ID: ACJ9TGW12C

Prepared by

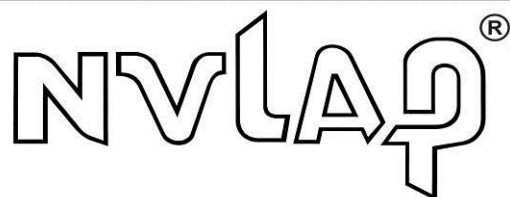
UL CCS

47173 BENICIA STREET

FREMONT, CA 94538, U.S.A.

TEL: (510) 771-1000

FAX: (510) 661-0888



NVLAP LAB CODE 200065-0

1. SAR Test Results

Measurement was performed on the highest measured SAR for Rear configuration in each frequency band only.

GSM850

Test Position	Dist. (mm)	Prox. Sensor Status	Mode	Ch #.	Freq. (MHz)	Power (dBm)		1-g SAR (W/kg)		Plot Page No.	Note
						Tune-Up Limit	Meas.	Meas.	Scaled		
Rear	0	Off	GPRS 2 slots	128	824.2	33.0	31.2				
				190	836.6	33.0	31.2	0.384	0.581	2	
				251	848.8	33.0	31.5				

GSM1900

Test Position	Dist. (mm)	Prox. Sensor Status	Mode	Ch #.	Freq. (MHz)	Power (dBm)		1-g SAR (W/kg)		Plot Page No.	Note
						Tune-Up Limit	Meas.	Meas.	Scaled		
Rear	0	Off	GPRS 2 slots	512	1850.2	30.0	28.6				
				661	1880	30.0	28.5	0.117	0.165	3	
				810	1909.8	30.0	28.5				

LTE Band 4

Test Position	Dist. (mm)	Prox. Sensor Status	Mode	UL Ch #.	Freq. (MHz)	UL RB Allocation	UL RB Start	Power (dBm)		1-g SAR (W/kg)		Plot Page No.	Note
								Tune-Up Limit	Meas.	Meas.	Scaled		
Rear	0	Off	QPSK	20350	1750.0	1	24	24.0	22.4	0.115	0.166	4	
			QPSK	20350	1750.0	25	12	24.0	21.4	0.0927	0.169	5	

LTE Band 17

Test Position	Dist. (mm)	Prox. Sensor Status	Mode	UL Ch #.	Freq. (MHz)	UL RB Allocation	UL RB Start	Power (dBm)		1-g SAR (W/kg)		Plot Page No.	Note
								Tune-Up Limit	Meas.	Meas.	Scaled		
Rear	0	Off	QPSK	23800	711.0	1	24	24.0	23.2	0.261	0.314	6	
			QPSK	23800	711.0	25	12	24.0	22.2	0.348	0.527	7	

2. SAR Plots

Test Laboratory: UL CCS SAR Lab F Date: 1/11/2013

GPRS 850

Frequency: 836.6 MHz; Duty Cycle: 1:4.00037; Room Ambient Temperature: 24.0°C; Liquid Temperature: 23.0°C
Medium parameters used (interpolated): $f = 836.6$ MHz; $\sigma = 1.019$ mho/m; $\epsilon_r = 53.176$; $\rho = 1000$ kg/m³

DASY5 Configuration:

- Area Scan Setting: Find Secondary Maximum Within: 2.0 dB and with a peak SAR value greater than 0.0012W/kg
- Electronics: DAE4 Sn1352; Calibrated: 10/8/2012
- Probe: EX3DV4 - SN3885; ConvF(9.36, 9.36, 9.36); Calibrated: 10/9/2012;
- Sensor-Surface: 2.5mm (Mechanical Surface Detection (Locations From Previous Scan Used)), Sensor-Surface: 2.5mm (Mechanical Surface Detection)
- Phantom: ELI v5.0 (A); Type: QDOVA002AA; Serial: TP:xxxx

Rear/Prox off_2 Slots_Ch 190/Area Scan (8x9x1): Measurement grid: dx=15mm, dy=15mm

[Info: Interpolated medium parameters used for SAR evaluation.](#)

Maximum value of SAR (measured) = 0.479 W/kg

Rear/Prox off_2 Slots_Ch 190/Zoom Scan (5x5x7)/Cube 0: Measurement grid: dx=8mm, dy=8mm, dz=5mm

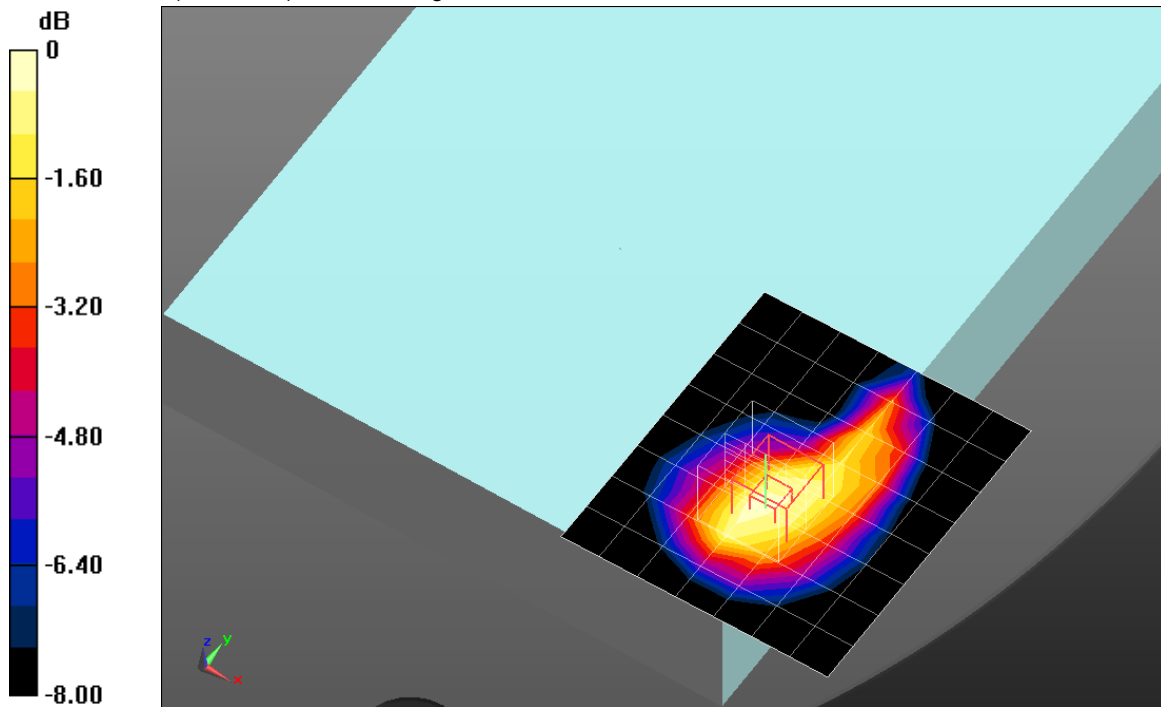
Reference Value = 19.557 V/m; Power Drift = -0.31 dB

Peak SAR (extrapolated) = 0.632 W/kg

SAR(1 g) = 0.384 W/kg; SAR(10 g) = 0.237 W/kg

[Info: Interpolated medium parameters used for SAR evaluation.](#)

Maximum value of SAR (measured) = 0.490 W/kg



0 dB = 0.490 W/kg = -3.10 dBW/kg

GPRS 1900

Frequency: 1880 MHz; Duty Cycle: 1:4.00037; Room Ambient Temperature: 24.0°C; Liquid Temperature: 23.0°C
Medium parameters used: $f = 1880$ MHz; $\sigma = 1.487$ mho/m; $\epsilon_r = 51.169$; $\rho = 1000$ kg/m³

DASY5 Configuration:

- Area Scan Setting: Find Secondary Maximum Within: 2.0 dB and with a peak SAR value greater than 0.0012W/kg
- Electronics: DAE4 Sn1352; Calibrated: 10/8/2012
- Probe: EX3DV4 - SN3885; ConvF(7.67, 7.67, 7.67); Calibrated: 10/9/2012;
- Sensor-Surface: 2.5mm (Mechanical Surface Detection)
- Phantom: ELI v5.0 (B); Type: QDOVA001BB; Serial: 1118

Rear/Prox off_2 Slots_Ch 661/Area Scan (8x9x1): Measurement grid: dx=15mm, dy=15mm
Maximum value of SAR (measured) = 0.128 W/kg

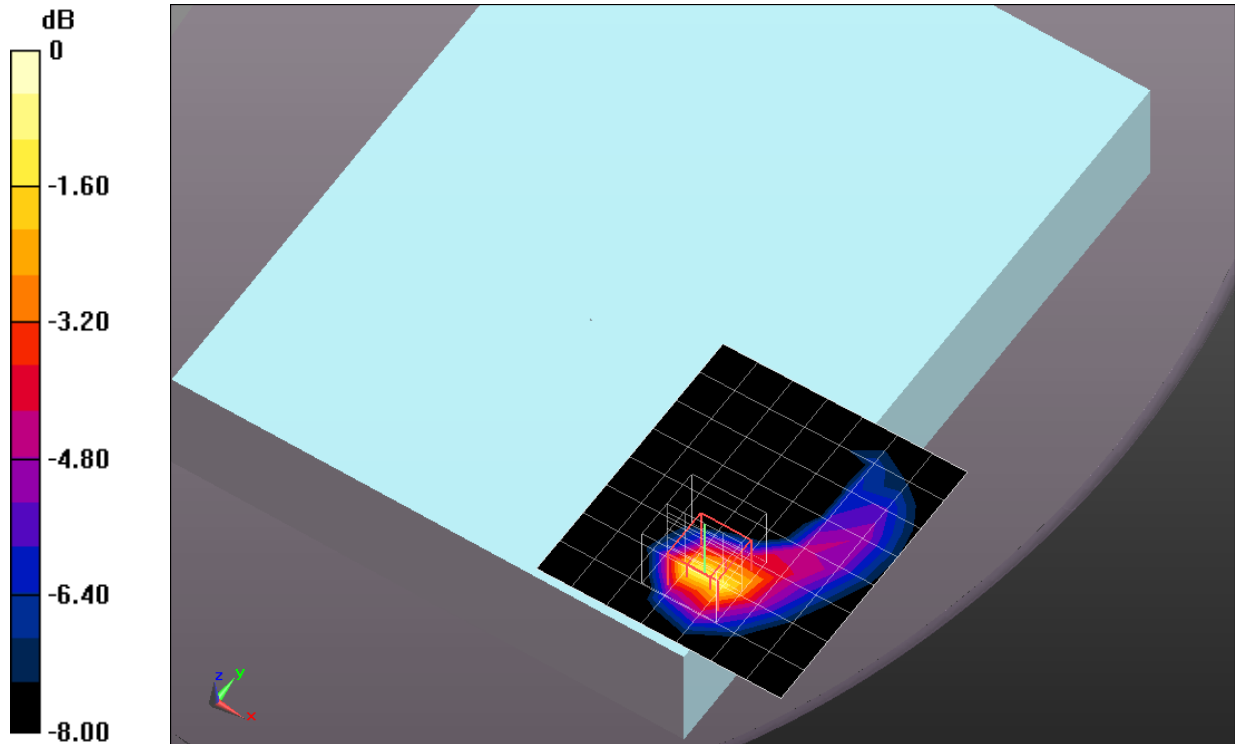
Rear/Prox off_2 Slots_Ch 661/Zoom Scan (5x5x7)/Cube 0: Measurement grid: dx=8mm, dy=8mm, dz=5mm

Reference Value = 9.172 V/m; Power Drift = 0.03 dB

Peak SAR (extrapolated) = 0.210 W/kg

SAR(1 g) = 0.117 W/kg; SAR(10 g) = 0.061 W/kg

Maximum value of SAR (measured) = 0.160 W/kg



0 dB = 0.160 W/kg = -7.96 dBW/kg

LTE Band 4

Frequency: 1750 MHz; Duty Cycle: 1:1; Room Ambient Temperature: 24.0°C; Liquid Temperature: 23.0°C

Medium parameters used: $f = 1750$ MHz; $\sigma = 1.534$ mho/m; $\epsilon_r = 51.304$; $\rho = 1000$ kg/m³

DASY5 Configuration:

- Area Scan Setting: Find Secondary Maximum Within: 2.0 dB and with a peak SAR value greater than 0.0012W/kg
- Electronics: DAE4 Sn1352; Calibrated: 10/8/2012
- Probe: EX3DV4 - SN3885; ConvF(8.03, 8.03, 8.03); Calibrated: 10/9/2012;
- Sensor-Surface: 2.5mm (Mechanical Surface Detection)
- Phantom: ELI v5.0 (B); Type: QDOVA001BB; Serial: 1118

Rear Prox. Off/QPSK_RB 1/24_ Ch 20350/Area Scan (8x9x1): Measurement grid: dx=15mm, dy=15mm

Maximum value of SAR (measured) = 0.148 W/kg

Rear Prox. Off/QPSK_RB 1/24_ Ch 20350/Zoom Scan (5x5x7)/Cube 0: Measurement grid:

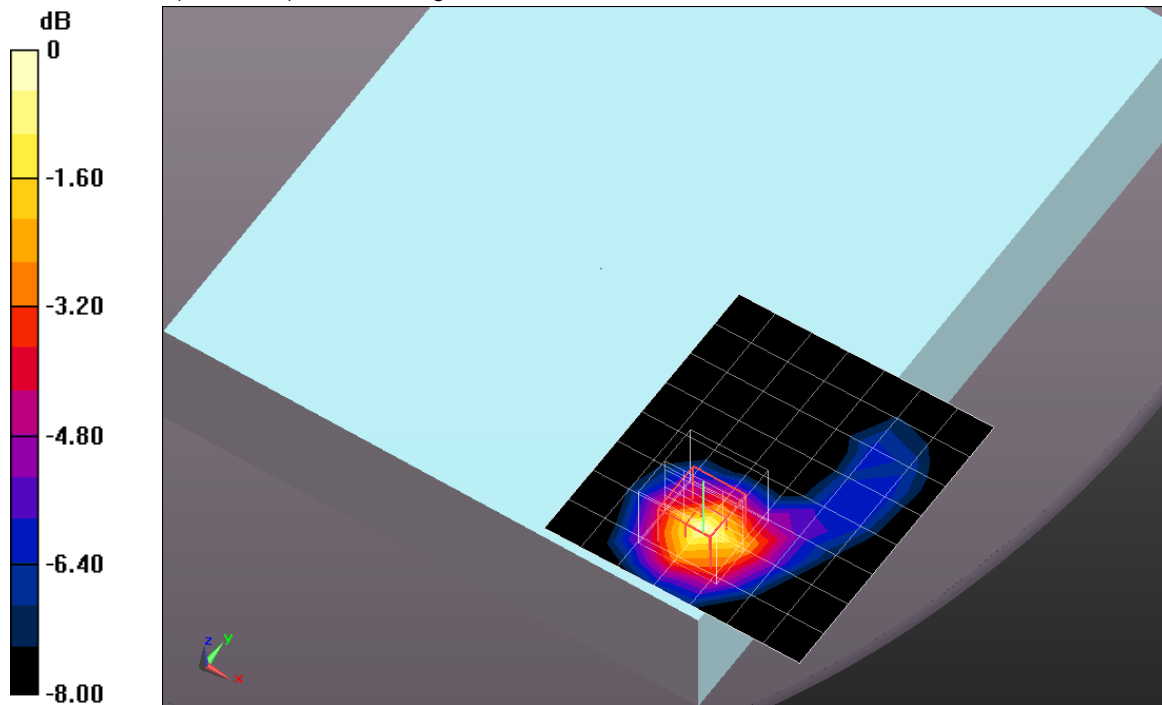
dx=8mm, dy=8mm, dz=5mm

Reference Value = 10.086 V/m; Power Drift = -0.03 dB

Peak SAR (extrapolated) = 0.200 W/kg

SAR(1 g) = 0.115 W/kg; SAR(10 g) = 0.0626 W/kg

Maximum value of SAR (measured) = 0.155 W/kg



0 dB = 0.155 W/kg = -8.10 dBW/kg

LTE Band 4

Frequency: 1750 MHz; Duty Cycle: 1:1; Room Ambient Temperature: 24.0°C; Liquid Temperature: 23.0°C

Medium parameters used: $f = 1750$ MHz; $\sigma = 1.534$ mho/m; $\epsilon_r = 51.304$; $\rho = 1000$ kg/m³

DASY5 Configuration:

- Area Scan Setting: Find Secondary Maximum Within: 2.0 dB and with a peak SAR value greater than 0.0012W/kg
- Electronics: DAE4 Sn1352; Calibrated: 10/8/2012
- Probe: EX3DV4 - SN3885; ConvF(8.03, 8.03, 8.03); Calibrated: 10/9/2012;
- Sensor-Surface: 2.5mm (Mechanical Surface Detection (Locations From Previous Scan Used)), Sensor-Surface: 2.5mm (Mechanical Surface Detection)
- Phantom: ELI v5.0 (B); Type: QDOVA001BB; Serial: 1118

Rear Prox. Off/QPSK_RB 25/12_ Ch 20350/Area Scan (8x9x1): Measurement grid: dx=15mm, dy=15mm

Maximum value of SAR (measured) = 0.120 W/kg

Rear Prox. Off/QPSK_RB 25/12_ Ch 20350/Zoom Scan (5x5x7)/Cube 0: Measurement grid:

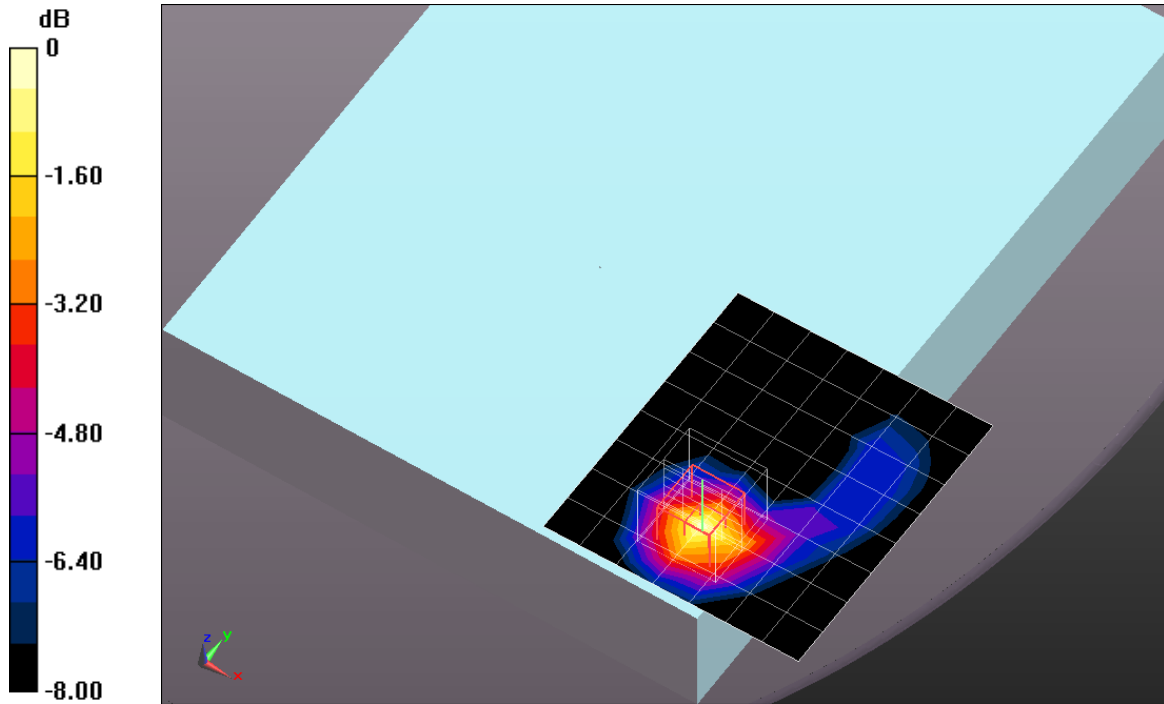
dx=8mm, dy=8mm, dz=5mm

Reference Value = 9.075 V/m; Power Drift = -0.02 dB

Peak SAR (extrapolated) = 0.162 W/kg

SAR(1 g) = 0.0927 W/kg; SAR(10 g) = 0.0513 W/kg

Maximum value of SAR (measured) = 0.124 W/kg



0 dB = 0.124 W/kg = -9.07 dBW/kg

LTE Band 17

Frequency: 711 MHz; Duty Cycle: 1:1; Room Ambient Temperature: 24.0°C; Liquid Temperature: 23.0°C
Medium parameters used (interpolated): $f = 711$ MHz; $\sigma = 0.915$ mho/m; $\epsilon_r = 56.783$; $\rho = 1000$ kg/m³

DASY5 Configuration:

- Area Scan Setting: Find Secondary Maximum Within: 2.0 dB and with a peak SAR value greater than 0.0012W/kg
- Electronics: DAE4 Sn1352; Calibrated: 10/8/2012
- Probe: EX3DV4 - SN3885; ConvF(9.5, 9.5, 9.5); Calibrated: 10/9/2012;
- Sensor-Surface: 2.5mm (Mechanical Surface Detection)
- Phantom: ELI v5.0 (A); Type: QDOVA002AA; Serial: TP:xxxx

Rear Prox. Off/QPSK_RB 1/24_ Ch 23800/Area Scan (8x9x1): Measurement grid: dx=15mm, dy=15mm

[Info: Interpolated medium parameters used for SAR evaluation.](#)

Maximum value of SAR (measured) = 0.253 W/kg

Rear Prox. Off/QPSK_RB 1/24_ Ch 23800/Zoom Scan (5x5x7)/Cube 0: Measurement grid:

dx=8mm, dy=8mm, dz=5mm

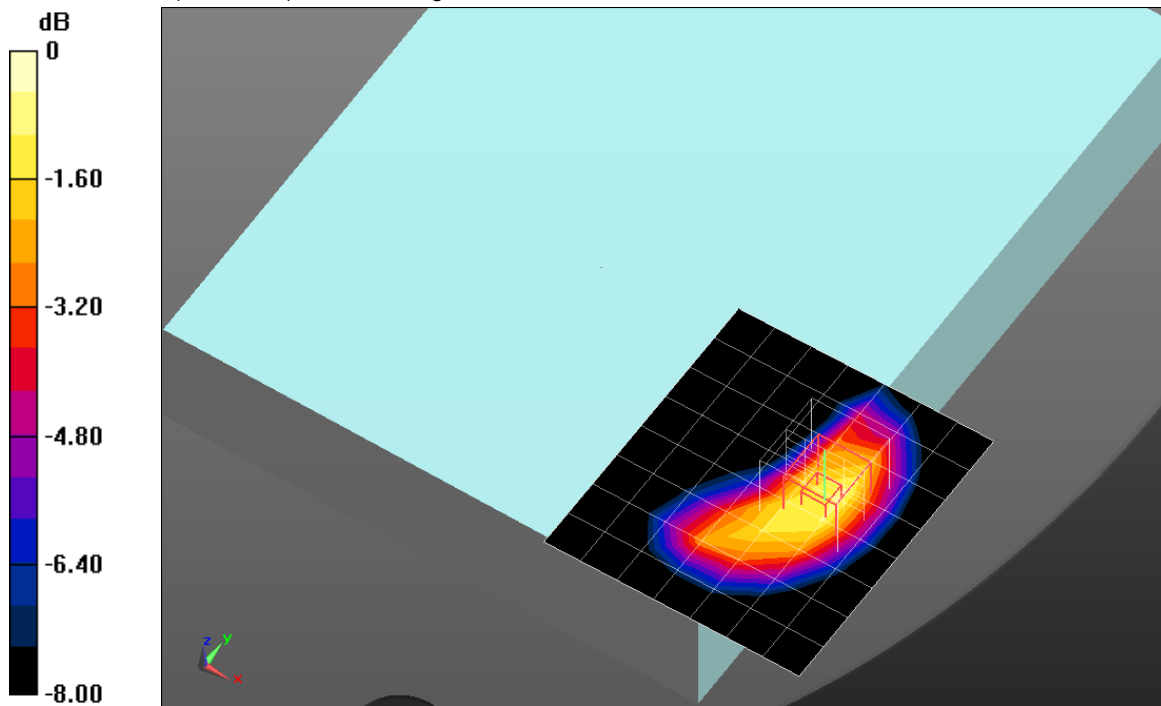
Reference Value = 16.908 V/m; Power Drift = 0.13 dB

Peak SAR (extrapolated) = 0.399 W/kg

SAR(1 g) = 0.261 W/kg; SAR(10 g) = 0.167 W/kg

[Info: Interpolated medium parameters used for SAR evaluation.](#)

Maximum value of SAR (measured) = 0.313 W/kg



0 dB = 0.313 W/kg = -5.04 dBW/kg

LTE Band 17

Frequency: 711 MHz; Duty Cycle: 1:1; Room Ambient Temperature: 24.0°C; Liquid Temperature: 23.0°C
Medium parameters used (interpolated): $f = 711$ MHz; $\sigma = 0.915$ mho/m; $\epsilon_r = 56.783$; $\rho = 1000$ kg/m³

DASY5 Configuration:

- Area Scan Setting: Find Secondary Maximum Within: 2.0 dB and with a peak SAR value greater than 0.0012W/kg
- Electronics: DAE4 Sn1352; Calibrated: 10/8/2012
- Probe: EX3DV4 - SN3885; ConvF(9.5, 9.5, 9.5); Calibrated: 10/9/2012;
- Sensor-Surface: 2.5mm (Mechanical Surface Detection (Locations From Previous Scan Used)), Sensor-Surface: 2.5mm (Mechanical Surface Detection)
- Phantom: ELI v5.0 (A); Type: QDOVA002AA; Serial: TP:xxxx

Rear Prox. Off/QPSK_RB 25/12_ Ch 23800/Area Scan (8x9x1): Measurement grid: dx=15mm, dy=15mm

[Info: Interpolated medium parameters used for SAR evaluation.](#)

Maximum value of SAR (measured) = 0.326 W/kg

Rear Prox. Off/QPSK_RB 25/12_ Ch 23800/Zoom Scan (5x5x7)/Cube 0: Measurement grid: dx=8mm, dy=8mm, dz=5mm

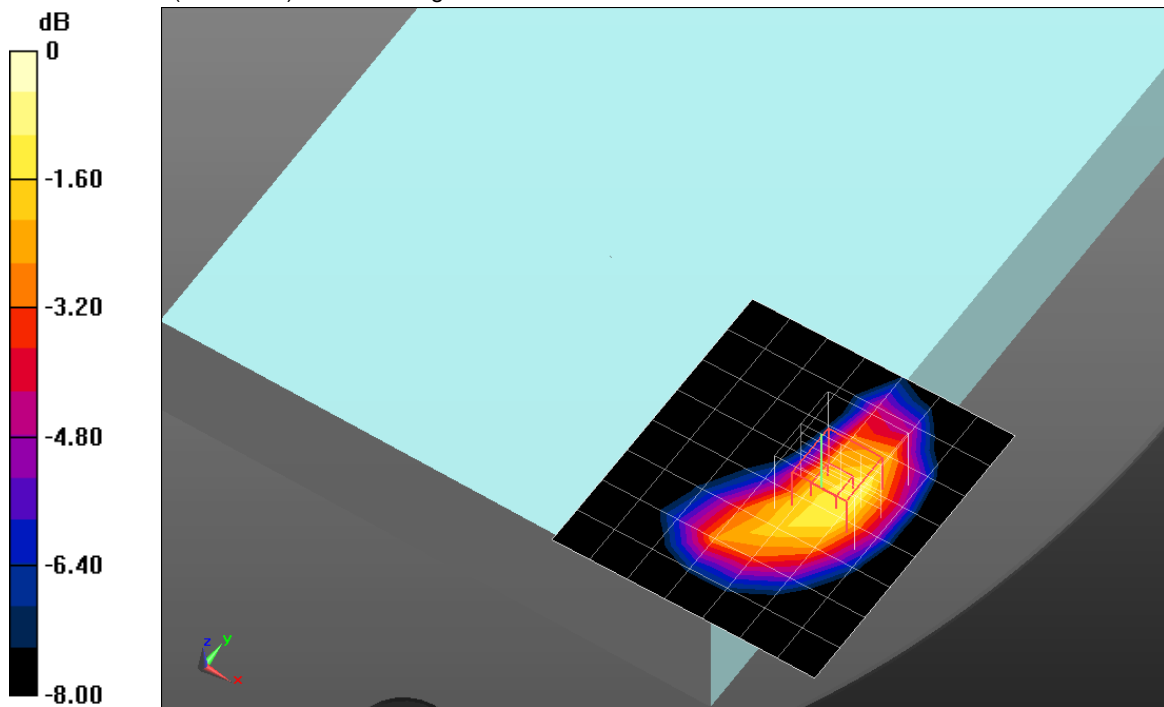
Reference Value = 18.817 V/m; Power Drift = -0.03 dB

Peak SAR (extrapolated) = 0.575 W/kg

SAR(1 g) = 0.348 W/kg; SAR(10 g) = 0.219 W/kg

[Info: Interpolated medium parameters used for SAR evaluation.](#)

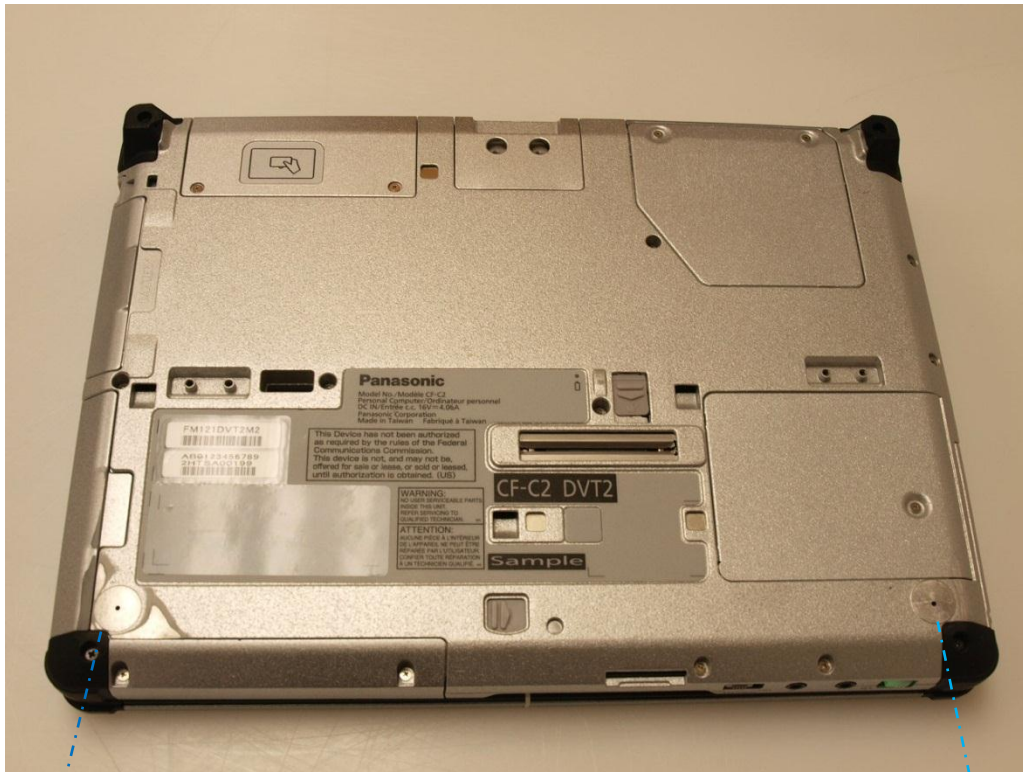
Maximum value of SAR (measured) = 0.419 W/kg



0 dB = 0.419 W/kg = -3.78 dBW/kg

3. External Photo

Tablet Mode Rear with Front Feet removed



4. Set-up Photo

Rear with 0 mm Separation Distance



END OF REPORT