

## LTE Band 4

Frequency: 1750 MHz; Duty Cycle: 1:1; Room Ambient Temperature: 24.0°C; Liquid Temperature: 23.0°C

Medium parameters used:  $f = 1750$  MHz;  $\sigma = 1.474$  mho/m;  $\epsilon_r = 52.644$ ;  $\rho = 1000$  kg/m<sup>3</sup>

DASY5 Configuration:

- Area Scan Setting: Find Secondary Maximum Within: 2.0 dB and with a peak SAR value greater than 0.0012W/kg
- Electronics: DAE4 Sn1258; Calibrated: 3/8/2012
- Probe: EX3DV4 - SN3772; ConvF(7.55, 7.55, 7.55); Calibrated: 2/16/2012;
- Sensor-Surface: 2.5mm (Mechanical Surface Detection (Locations From Previous Scan Used)), Sensor-Surface: 2.5mm (Mechanical Surface Detection)
- Phantom: ELI v5.0 (A); Type: QDOVA001BB; Serial: 1119

**Rear Prox. Off/QPSK\_RB 1/24\_ Ch 20350/Area Scan (8x9x1):** Measurement grid: dx=15mm, dy=15mm

Maximum value of SAR (measured) = 0.0677 W/kg

**Rear Prox. Off/QPSK\_RB 1/24\_ Ch 20350/Zoom Scan (5x5x7)/Cube 0:** Measurement grid:

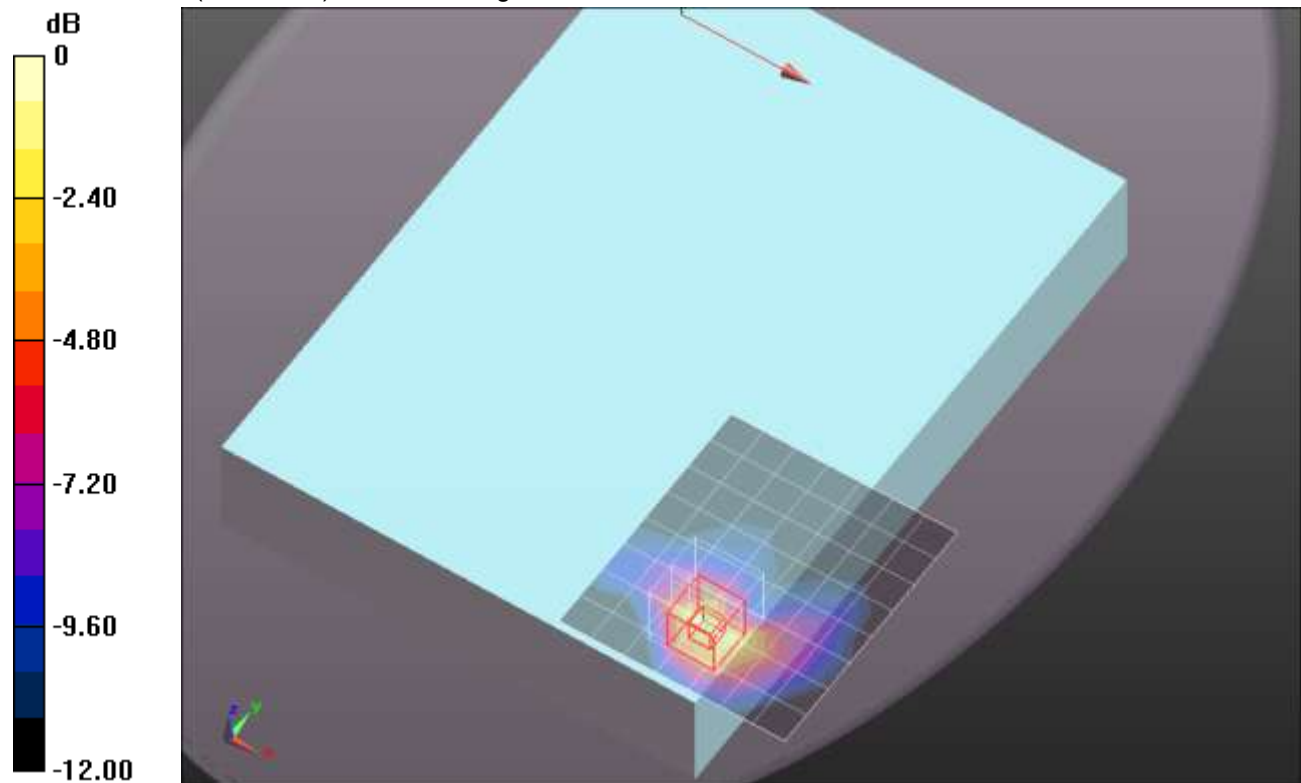
dx=8mm, dy=8mm, dz=5mm

Reference Value = 6.898 V/m; Power Drift = -0.06 dB

Peak SAR (extrapolated) = 0.0950 W/kg

**SAR(1 g) = 0.052 W/kg; SAR(10 g) = 0.026 W/kg**

Maximum value of SAR (measured) = 0.0733 W/kg



0 dB = 0.0733 W/kg = -11.35 dBW/kg

## LTE Band 4

Frequency: 1750 MHz; Duty Cycle: 1:1; Room Ambient Temperature: 24.0°C; Liquid Temperature: 23.0°C  
Medium parameters used:  $f = 1750$  MHz;  $\sigma = 1.474$  mho/m;  $\epsilon_r = 52.644$ ;  $\rho = 1000$  kg/m<sup>3</sup>

DASY5 Configuration:

- Area Scan Setting: Find Secondary Maximum Within: 2.0 dB and with a peak SAR value greater than 0.0012W/kg
- Electronics: DAE4 Sn1258; Calibrated: 3/8/2012
- Probe: EX3DV4 - SN3772; ConvF(7.55, 7.55, 7.55); Calibrated: 2/16/2012;
- Sensor-Surface: 2.5mm (Mechanical Surface Detection (Locations From Previous Scan Used)), Sensor-Surface: 2.5mm (Mechanical Surface Detection)
- Phantom: ELI v5.0 (A); Type: QDOVA001BB; Serial: 1119

**Rear Prox. Off/QPSK\_RB 25/12\_ Ch 20350/Area Scan (8x9x1):** Measurement grid: dx=15mm, dy=15mm

Maximum value of SAR (measured) = 0.0696 W/kg

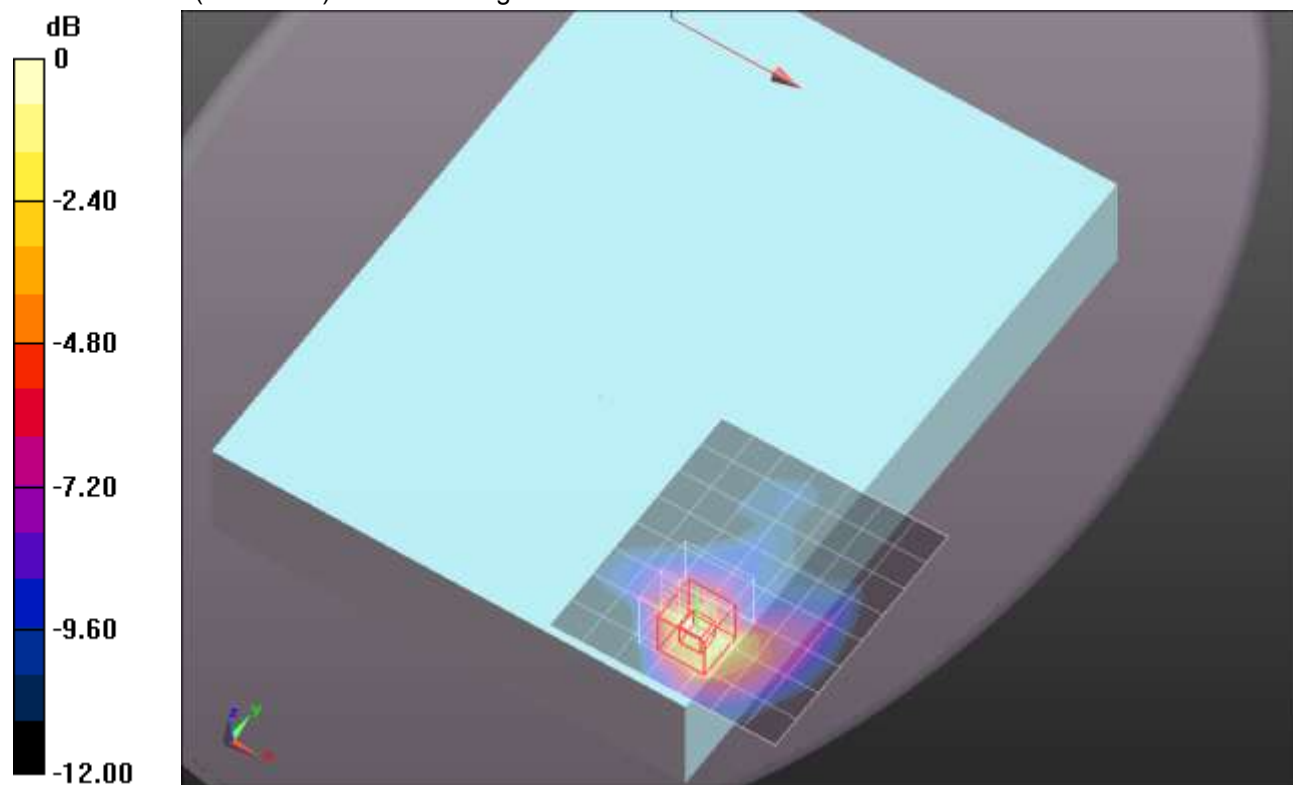
**Rear Prox. Off/QPSK\_RB 25/12\_ Ch 20350/Zoom Scan (5x5x7)/Cube 0:** Measurement grid: dx=8mm, dy=8mm, dz=5mm

Reference Value = 6.993 V/m; Power Drift = -0.11 dB

Peak SAR (extrapolated) = 0.0980 W/kg

**SAR(1 g) = 0.053 W/kg; SAR(10 g) = 0.027 W/kg**

Maximum value of SAR (measured) = 0.0742 W/kg



0 dB = 0.0742 W/kg = -11.30 dBW/kg

## LTE Band 4

Frequency: 1750 MHz; Duty Cycle: 1:1; Room Ambient Temperature: 24.0°C; Liquid Temperature: 23.0°C  
Medium parameters used:  $f = 1750$  MHz;  $\sigma = 1.458$  mho/m;  $\epsilon_r = 51.797$ ;  $\rho = 1000$  kg/m<sup>3</sup>

DASY5 Configuration:

- Area Scan Setting: Find Secondary Maximum Within: 2.0 dB and with a peak SAR value greater than 0.0012W/kg
- Electronics: DAE4 Sn1239; Calibrated: 6/6/2012
- Probe: EX3DV4 - SN3773; ConvF(7.37, 7.37, 7.37); Calibrated: 3/14/2012;
- Sensor-Surface: 2.5mm (Mechanical Surface Detection (Locations From Previous Scan Used)), Sensor-Surface: 2.5mm (Mechanical Surface Detection)
- Phantom: ELI v5.0 (B); Type: QDOVA001BB; Serial: 1099

**Edge 1 Prox. Off/QPSK\_RB 1/24\_ Ch 20350/Area Scan (6x21x1):** Measurement grid: dx=15mm, dy=15mm

Maximum value of SAR (measured) = 0.209 W/kg

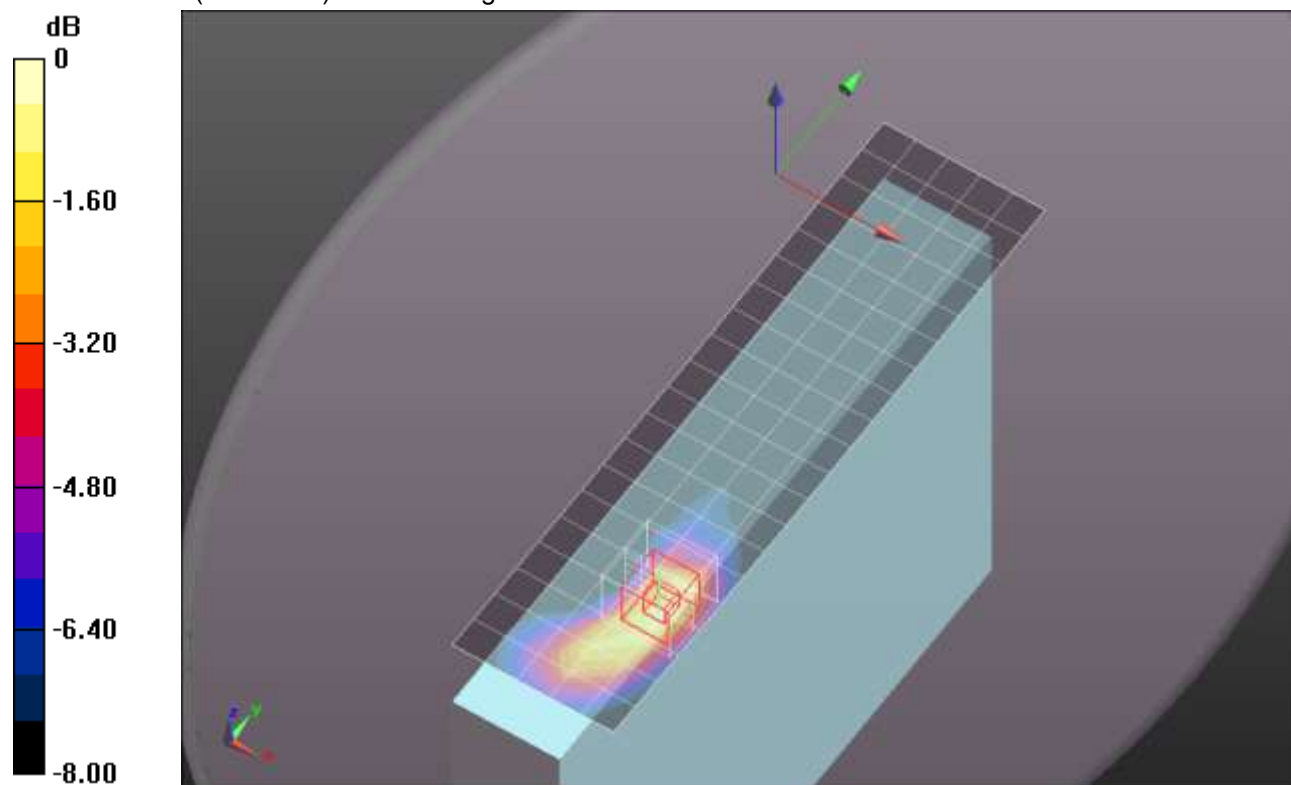
**Edge 1 Prox. Off/QPSK\_RB 1/24\_ Ch 20350/Zoom Scan (5x5x7)/Cube 0:** Measurement grid: dx=8mm, dy=8mm, dz=5mm

Reference Value = 11.911 V/m; Power Drift = 0.18 dB

Peak SAR (extrapolated) = 0.286 W/kg

**SAR(1 g) = 0.177 W/kg; SAR(10 g) = 0.102 W/kg**

Maximum value of SAR (measured) = 0.220 W/kg



0 dB = 0.220 W/kg = -6.58 dBW/kg

## LTE Band 4

Frequency: 1750 MHz; Duty Cycle: 1:1; Room Ambient Temperature: 24.0°C; Liquid Temperature: 23.0°C

Medium parameters used:  $f = 1750$  MHz;  $\sigma = 1.458$  mho/m;  $\epsilon_r = 51.797$ ;  $\rho = 1000$  kg/m<sup>3</sup>

DASY5 Configuration:

- Area Scan Setting: Find Secondary Maximum Within: 2.0 dB and with a peak SAR value greater than 0.0012W/kg
- Electronics: DAE4 Sn1239; Calibrated: 6/6/2012
- Probe: EX3DV4 - SN3773; ConvF(7.37, 7.37, 7.37); Calibrated: 3/14/2012;
- Sensor-Surface: 2.5mm (Mechanical Surface Detection (Locations From Previous Scan Used)), Sensor-Surface: 2.5mm (Mechanical Surface Detection)
- Phantom: ELI v5.0 (B); Type: QDOVA001BB; Serial: 1099

**Edge 1 Prox. Off/QPSK\_RB 25/12\_ Ch 20350/Area Scan (6x21x1):** Measurement grid: dx=15mm, dy=15mm

Maximum value of SAR (measured) = 0.167 W/kg

**Edge 1 Prox. Off/QPSK\_RB 25/12\_ Ch 20350/Zoom Scan (5x5x7)/Cube 0:** Measurement grid:

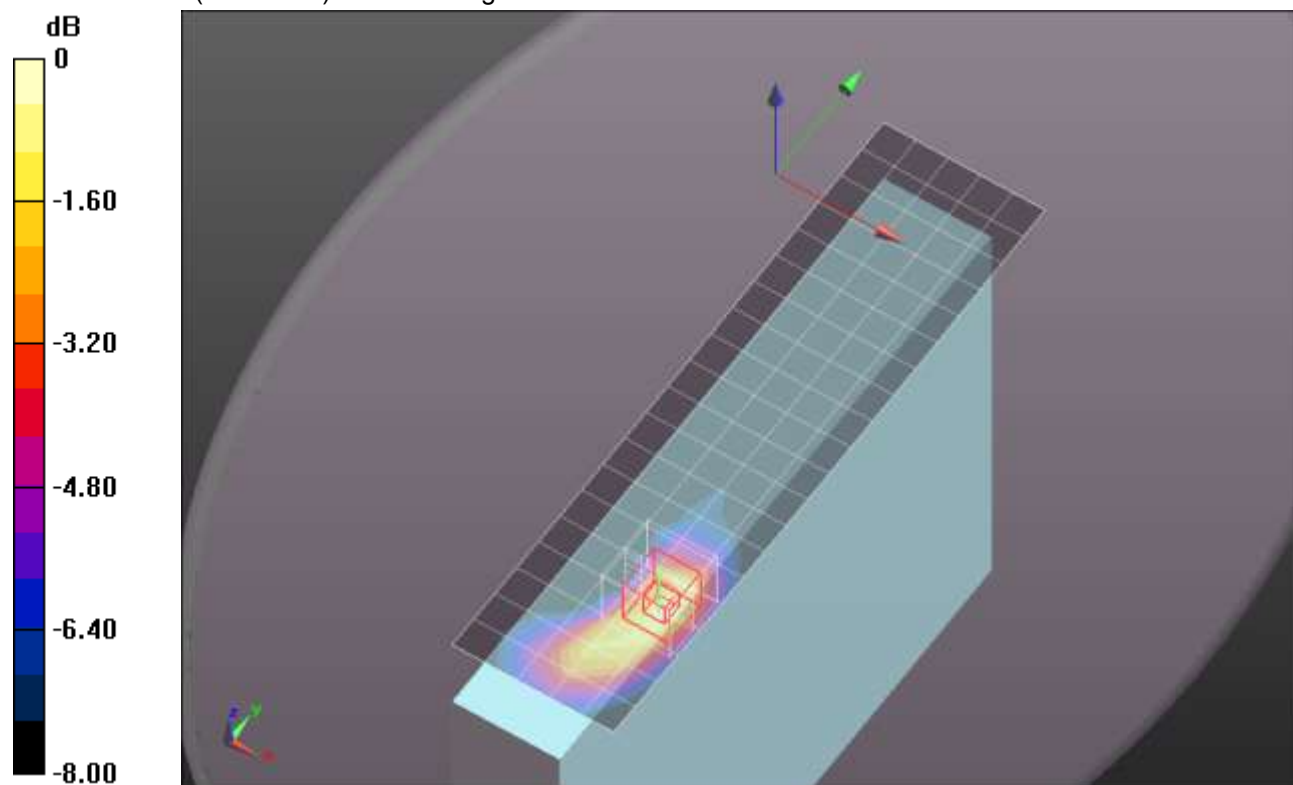
dx=8mm, dy=8mm, dz=5mm

Reference Value = 10.666 V/m; Power Drift = 0.09 dB

Peak SAR (extrapolated) = 0.226 W/kg

**SAR(1 g) = 0.141 W/kg; SAR(10 g) = 0.081 W/kg**

Maximum value of SAR (measured) = 0.175 W/kg



0 dB = 0.175 W/kg = -7.57 dBW/kg

## LTE Band 4

Frequency: 1715 MHz; Duty Cycle: 1:1; Room Ambient Temperature: 24.0°C; Liquid Temperature: 23.0°C  
Medium parameters used:  $f = 1715$  MHz;  $\sigma = 1.436$  mho/m;  $\epsilon_r = 51.425$ ;  $\rho = 1000$  kg/m<sup>3</sup>

DASY5 Configuration:

- Area Scan Setting: Find Secondary Maximum Within: 2.0 dB and with a peak SAR value greater than 0.0012W/kg
- Electronics: DAE4 Sn1258; Calibrated: 3/8/2012
- Probe: EX3DV4 - SN3772; ConvF(7.55, 7.55, 7.55); Calibrated: 2/16/2012;
- Sensor-Surface: 2.5mm (Mechanical Surface Detection (Locations From Previous Scan Used)), Sensor-Surface: 2.5mm (Mechanical Surface Detection)
- Phantom: ELI v5.0 (A); Type: QDOVA001BB; Serial: 1119

**Edge 1 Prox. On/QPSK\_RB 1/24\_ Ch 20000/Area Scan (6x21x1):** Measurement grid: dx=15mm, dy=15mm

Maximum value of SAR (measured) = 1.48 W/kg

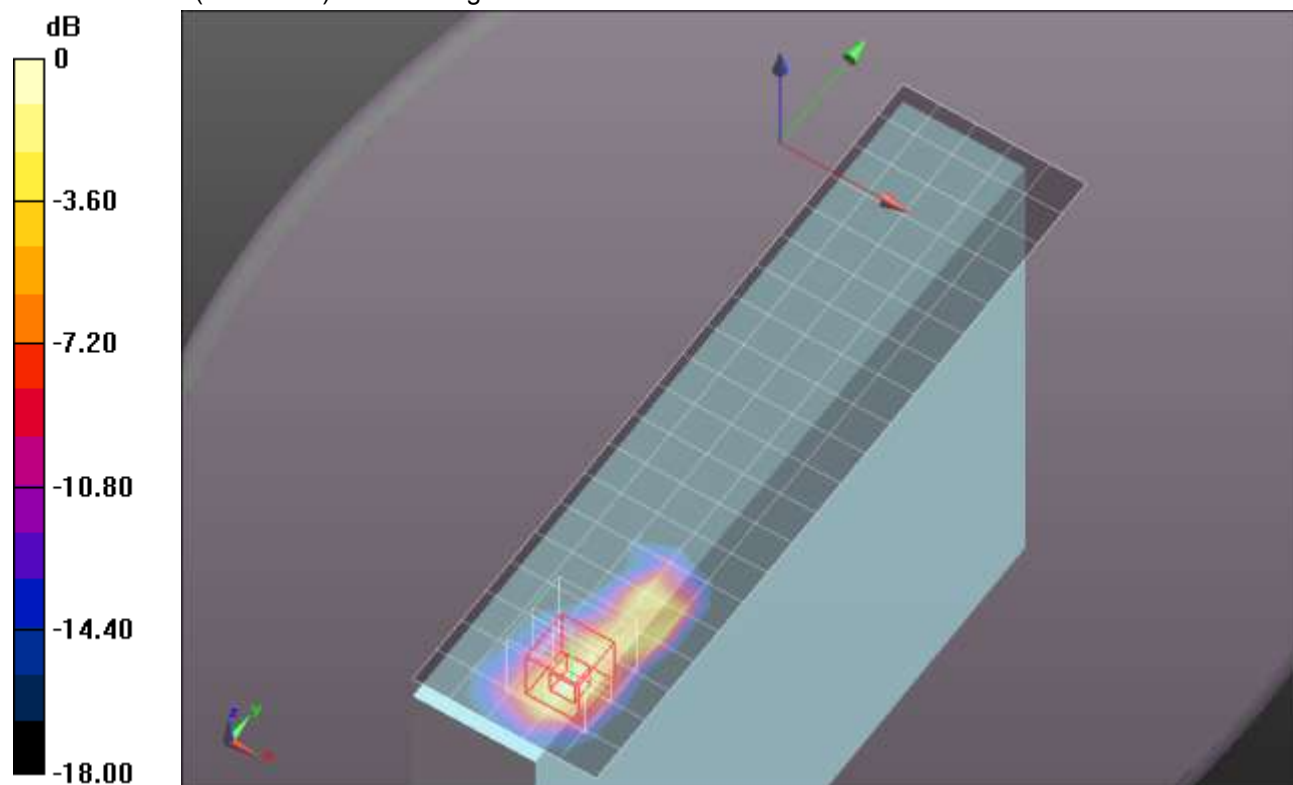
**Edge 1 Prox. On/QPSK\_RB 1/24\_ Ch 20000/Zoom Scan (5x5x7)/Cube 0:** Measurement grid: dx=8mm, dy=8mm, dz=5mm

Reference Value = 31.786 V/m; Power Drift = -0.14 dB

Peak SAR (extrapolated) = 1.92 W/kg

**SAR(1 g) = 0.990 W/kg; SAR(10 g) = 0.456 W/kg**

Maximum value of SAR (measured) = 1.39 W/kg



0 dB = 1.39 W/kg = 1.43 dBW/kg

## LTE Band 4

Frequency: 1732.5 MHz; Duty Cycle: 1:1; Room Ambient Temperature: 24.0°C; Liquid Temperature: 23.0°C  
Medium parameters used (interpolated):  $f = 1732.5$  MHz;  $\sigma = 1.45$  mho/m;  $\epsilon_r = 51.417$ ;  $\rho = 1000$  kg/m<sup>3</sup>

DASY5 Configuration:

- Area Scan Setting: Find Secondary Maximum Within: 2.0 dB and with a peak SAR value greater than 0.0012W/kg
- Electronics: DAE4 Sn1258; Calibrated: 3/8/2012
- Probe: EX3DV4 - SN3772; ConvF(7.55, 7.55, 7.55); Calibrated: 2/16/2012;
- Sensor-Surface: 2.5mm (Mechanical Surface Detection (Locations From Previous Scan Used)), Sensor-Surface: 2.5mm (Mechanical Surface Detection)
- Phantom: ELI v5.0 (A); Type: QDOVA001BB; Serial: 1119

**Edge 1 Prox. On/QPSK\_RB 1/49\_ Ch 20175/Area Scan (6x21x1):** Measurement grid: dx=15mm, dy=15mm

[Info: Interpolated medium parameters used for SAR evaluation.](#)

Maximum value of SAR (measured) = 1.32 W/kg

**Edge 1 Prox. On/QPSK\_RB 1/49\_ Ch 20175/Zoom Scan (5x5x7)/Cube 0:** Measurement grid:

dx=8mm, dy=8mm, dz=5mm

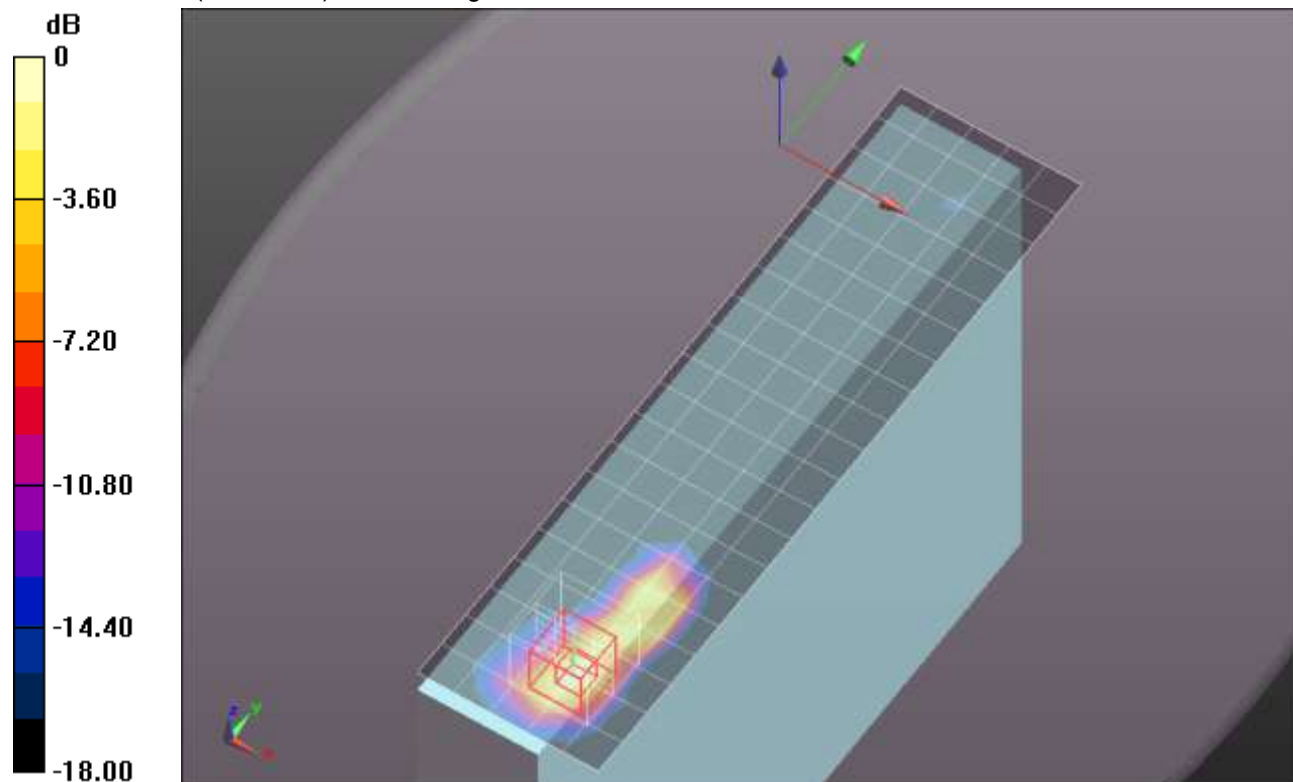
Reference Value = 29.858 V/m; Power Drift = -0.02 dB

Peak SAR (extrapolated) = 1.75 W/kg

**SAR(1 g) = 0.867 W/kg; SAR(10 g) = 0.397 W/kg**

[Info: Interpolated medium parameters used for SAR evaluation.](#)

Maximum value of SAR (measured) = 1.23 W/kg



0 dB = 1.23 W/kg = 0.90 dBW/kg

## LTE Band 4

Frequency: 1750 MHz; Duty Cycle: 1:1; Room Ambient Temperature: 24.0°C; Liquid Temperature: 23.0°C  
Medium parameters used:  $f = 1750$  MHz;  $\sigma = 1.475$  mho/m;  $\epsilon_r = 51.318$ ;  $\rho = 1000$  kg/m<sup>3</sup>

DASY5 Configuration:

- Area Scan Setting: Find Secondary Maximum Within: 2.0 dB and with a peak SAR value greater than 0.0012W/kg
- Electronics: DAE4 Sn1258; Calibrated: 3/8/2012
- Probe: EX3DV4 - SN3772; ConvF(7.55, 7.55, 7.55); Calibrated: 2/16/2012;
- Sensor-Surface: 2.5mm (Mechanical Surface Detection (Locations From Previous Scan Used)), Sensor-Surface: 2.5mm (Mechanical Surface Detection)
- Phantom: ELI v5.0 (A); Type: QDOVA001BB; Serial: 1119

**Edge 1 Prox. On/QPSK\_RB 1/0\_ Ch 20350/Area Scan (6x21x1):** Measurement grid: dx=15mm, dy=15mm

Maximum value of SAR (measured) = 1.34 W/kg

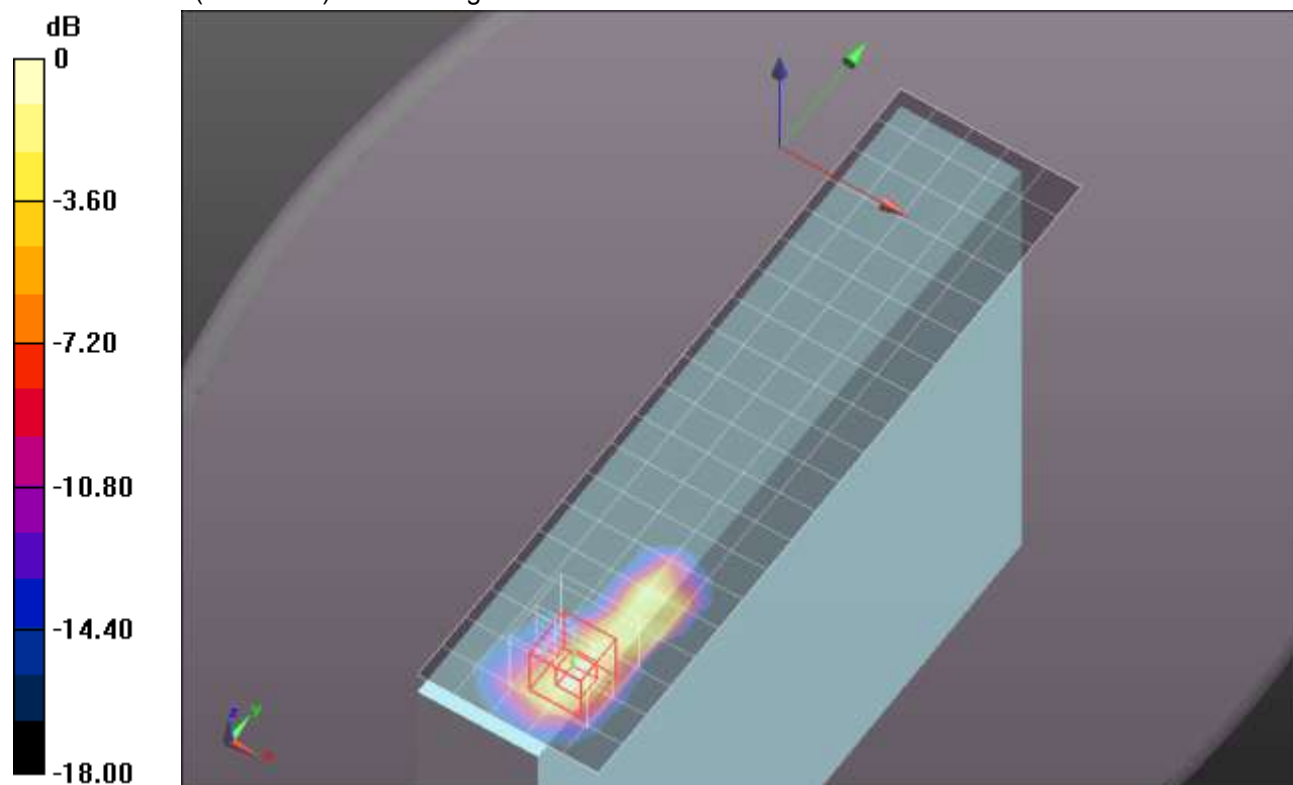
**Edge 1 Prox. On/QPSK\_RB 1/0\_ Ch 20350/Zoom Scan (5x5x7)/Cube 0:** Measurement grid: dx=8mm, dy=8mm, dz=5mm

Reference Value = 29.305 V/m; Power Drift = -0.04 dB

Peak SAR (extrapolated) = 1.79 W/kg

**SAR(1 g) = 0.866 W/kg; SAR(10 g) = 0.394 W/kg**

Maximum value of SAR (measured) = 1.24 W/kg



0 dB = 1.24 W/kg = 0.93 dBW/kg

## LTE Band 4

Frequency: 1715 MHz; Duty Cycle: 1:1; Room Ambient Temperature: 24.0°C; Liquid Temperature: 23.0°C  
Medium parameters used:  $f = 1715$  MHz;  $\sigma = 1.436$  mho/m;  $\epsilon_r = 51.425$ ;  $\rho = 1000$  kg/m<sup>3</sup>

DASY5 Configuration:

- Area Scan Setting: Find Secondary Maximum Within: 2.0 dB and with a peak SAR value greater than 0.0012W/kg
- Electronics: DAE4 Sn1258; Calibrated: 3/8/2012
- Probe: EX3DV4 - SN3772; ConvF(7.55, 7.55, 7.55); Calibrated: 2/16/2012;
- Sensor-Surface: 2.5mm (Mechanical Surface Detection (Locations From Previous Scan Used)), Sensor-Surface: 2.5mm (Mechanical Surface Detection)
- Phantom: ELI v5.0 (A); Type: QDOVA001BB; Serial: 1119

**Edge 1 Prox. On/QPSK\_RB 25/0\_ Ch 20000/Area Scan (6x21x1):** Measurement grid: dx=15mm, dy=15mm

Maximum value of SAR (measured) = 1.45 W/kg

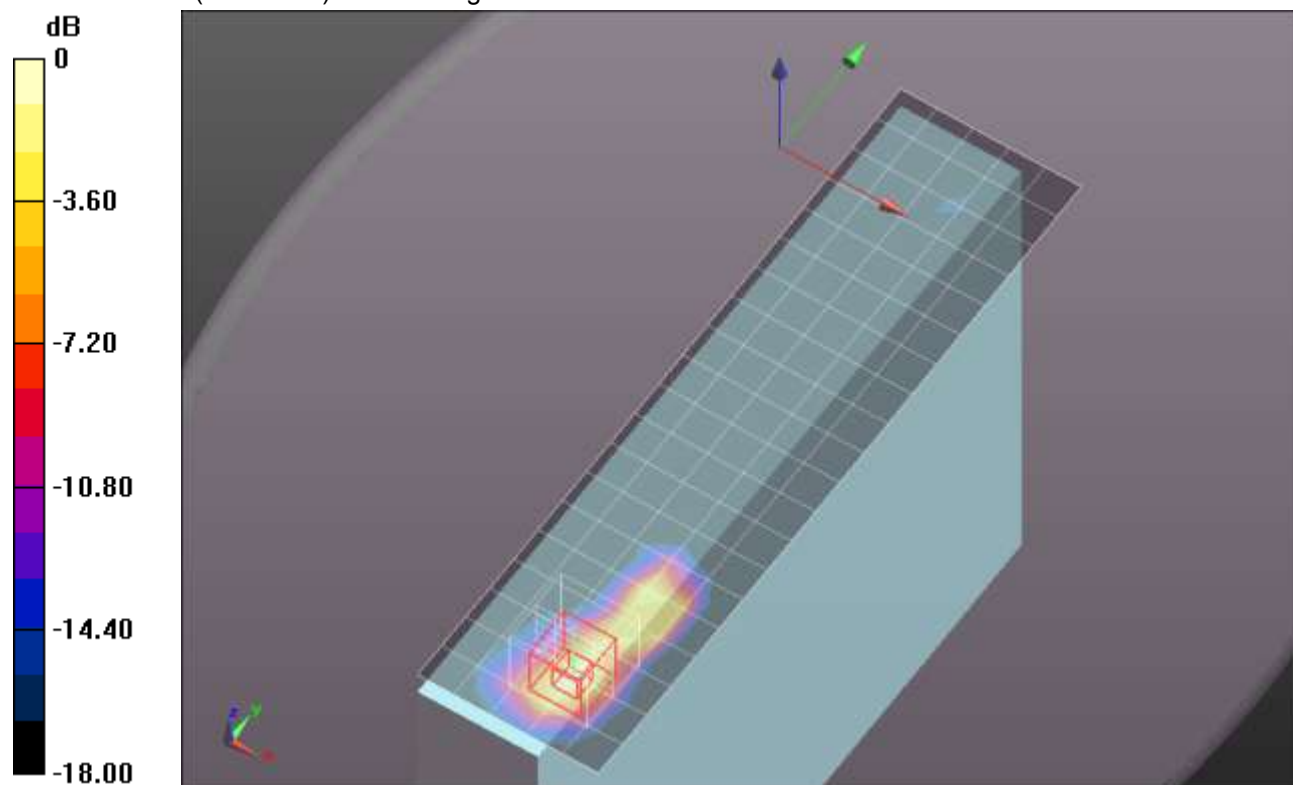
**Edge 1 Prox. On/QPSK\_RB 25/0\_ Ch 20000/Zoom Scan (5x5x7)/Cube 0:** Measurement grid: dx=8mm, dy=8mm, dz=5mm

Reference Value = 31.042 V/m; Power Drift = -0.15 dB

Peak SAR (extrapolated) = 1.90 W/kg

**SAR(1 g) = 0.961 W/kg; SAR(10 g) = 0.441 W/kg**

Maximum value of SAR (measured) = 1.35 W/kg



0 dB = 1.35 W/kg = 1.30 dBW/kg

## LTE Band 4

Frequency: 1732.5 MHz; Duty Cycle: 1:1; Room Ambient Temperature: 24.0°C; Liquid Temperature: 23.0°C  
Medium parameters used (interpolated):  $f = 1732.5$  MHz;  $\sigma = 1.45$  mho/m;  $\epsilon_r = 51.417$ ;  $\rho = 1000$  kg/m<sup>3</sup>

DASY5 Configuration:

- Area Scan Setting: Find Secondary Maximum Within: 2.0 dB and with a peak SAR value greater than 0.0012W/kg
- Electronics: DAE4 Sn1258; Calibrated: 3/8/2012
- Probe: EX3DV4 - SN3772; ConvF(7.55, 7.55, 7.55); Calibrated: 2/16/2012;
- Sensor-Surface: 2.5mm (Mechanical Surface Detection (Locations From Previous Scan Used)), Sensor-Surface: 2.5mm (Mechanical Surface Detection)
- Phantom: ELI v5.0 (A); Type: QDOVA001BB; Serial: 1119

**Edge 1 Prox. On/QPSK\_RB 25/12\_ Ch 20175/Area Scan (6x21x1):** Measurement grid: dx=15mm, dy=15mm

[Info: Interpolated medium parameters used for SAR evaluation.](#)

Maximum value of SAR (measured) = 1.44 W/kg

**Edge 1 Prox. On/QPSK\_RB 25/12\_ Ch 20175/Zoom Scan (5x5x7)/Cube 0:** Measurement grid:

dx=8mm, dy=8mm, dz=5mm

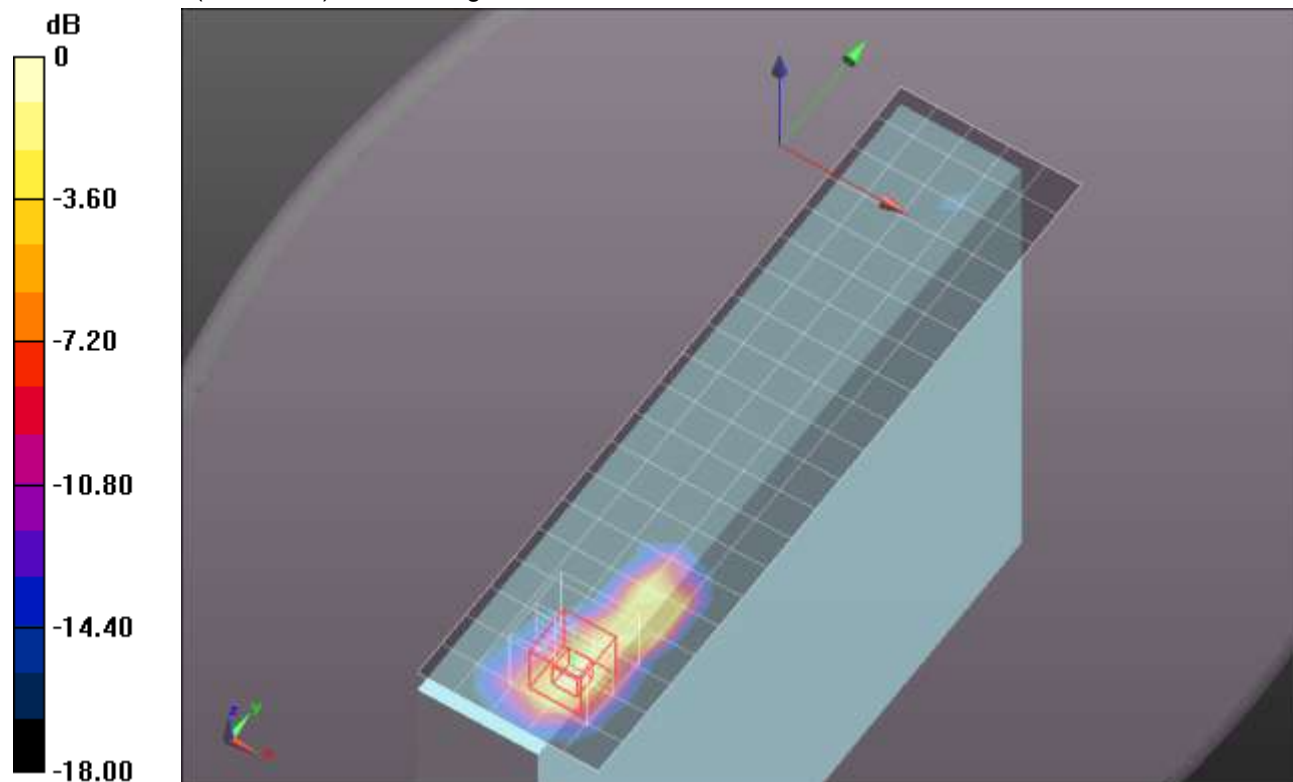
Reference Value = 30.824 V/m; Power Drift = -0.12 dB

Peak SAR (extrapolated) = 1.89 W/kg

**SAR(1 g) = 0.947 W/kg; SAR(10 g) = 0.434 W/kg**

[Info: Interpolated medium parameters used for SAR evaluation.](#)

Maximum value of SAR (measured) = 1.34 W/kg



0 dB = 1.34 W/kg = 1.27 dBW/kg

## LTE Band 4

Frequency: 1750 MHz; Duty Cycle: 1:1; Room Ambient Temperature: 24.0°C; Liquid Temperature: 23.0°C  
Medium parameters used:  $f = 1750$  MHz;  $\sigma = 1.475$  mho/m;  $\epsilon_r = 51.318$ ;  $\rho = 1000$  kg/m<sup>3</sup>

DASY5 Configuration:

- Area Scan Setting: Find Secondary Maximum Within: 2.0 dB and with a peak SAR value greater than 0.0012W/kg
- Electronics: DAE4 Sn1258; Calibrated: 3/8/2012
- Probe: EX3DV4 - SN3772; ConvF(7.55, 7.55, 7.55); Calibrated: 2/16/2012;
- Sensor-Surface: 2.5mm (Mechanical Surface Detection (Locations From Previous Scan Used)), Sensor-Surface: 2.5mm (Mechanical Surface Detection)
- Phantom: ELI v5.0 (A); Type: QDOVA001BB; Serial: 1119

**Edge 1 Prox. On/QPSK\_RB 25/24\_ Ch 20350/Area Scan (6x21x1):** Measurement grid: dx=15mm, dy=15mm

Maximum value of SAR (measured) = 1.28 W/kg

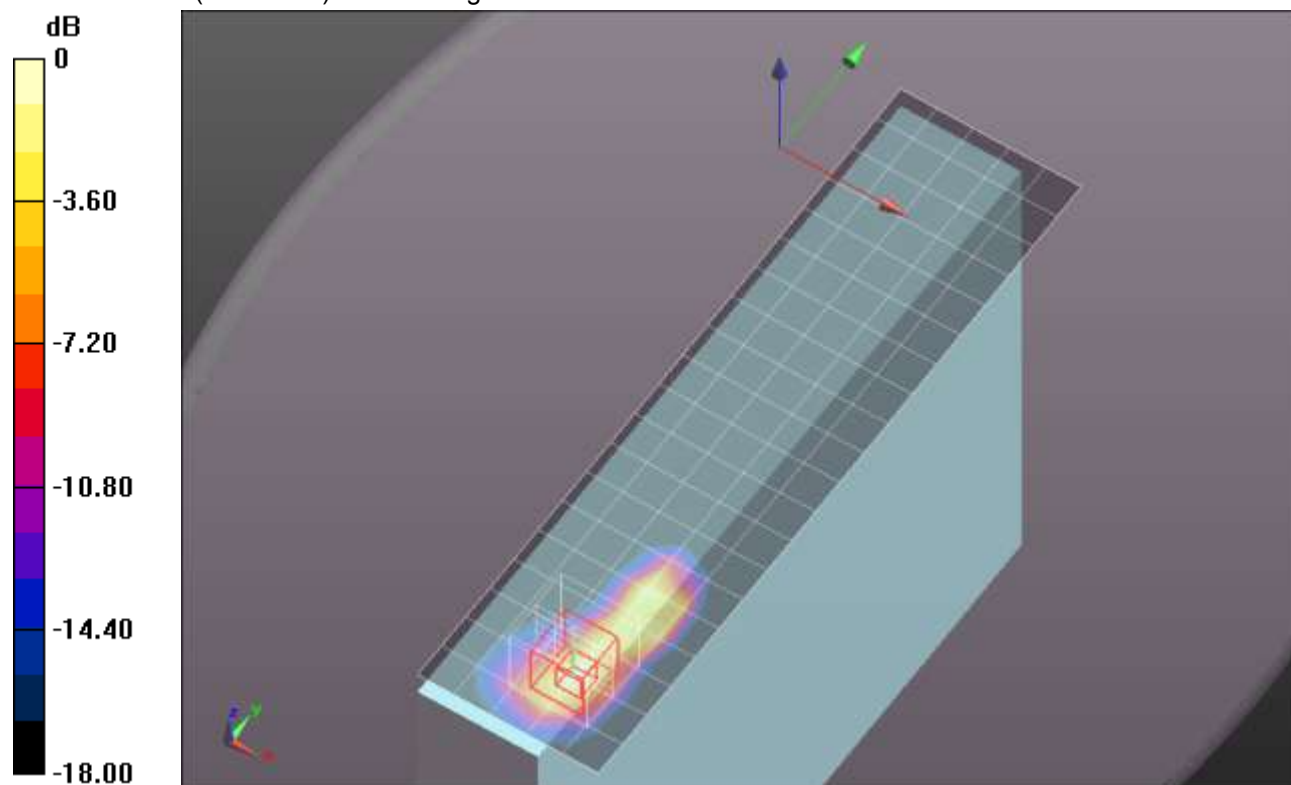
**Edge 1 Prox. On/QPSK\_RB 25/24\_ Ch 20350/Zoom Scan 2 (5x5x7)/Cube 0:** Measurement grid: dx=8mm, dy=8mm, dz=5mm

Reference Value = 29.577 V/m; Power Drift = -0.18 dB

Peak SAR (extrapolated) = 1.79 W/kg

**SAR(1 g) = 0.881 W/kg; SAR(10 g) = 0.400 W/kg**

Maximum value of SAR (measured) = 1.26 W/kg



0 dB = 1.26 W/kg = 1.00 dBW/kg

## LTE Band 4

Frequency: 1715 MHz; Duty Cycle: 1:1; Room Ambient Temperature: 24.0°C; Liquid Temperature: 23.0°C  
Medium parameters used:  $f = 1715$  MHz;  $\sigma = 1.436$  mho/m;  $\epsilon_r = 51.425$ ;  $\rho = 1000$  kg/m<sup>3</sup>

DASY5 Configuration:

- Area Scan Setting: Find Secondary Maximum Within: 2.0 dB and with a peak SAR value greater than 0.0012W/kg
- Electronics: DAE4 Sn1258; Calibrated: 3/8/2012
- Probe: EX3DV4 - SN3772; ConvF(7.55, 7.55, 7.55); Calibrated: 2/16/2012;
- Sensor-Surface: 2.5mm (Mechanical Surface Detection (Locations From Previous Scan Used)), Sensor-Surface: 2.5mm (Mechanical Surface Detection)
- Phantom: ELI v5.0 (A); Type: QDOVA001BB; Serial: 1119

**Edge 1 Prox. On/QPSK\_RB 50/0\_ Ch 20000/Area Scan (6x21x1):** Measurement grid: dx=15mm, dy=15mm

Maximum value of SAR (measured) = 1.49 W/kg

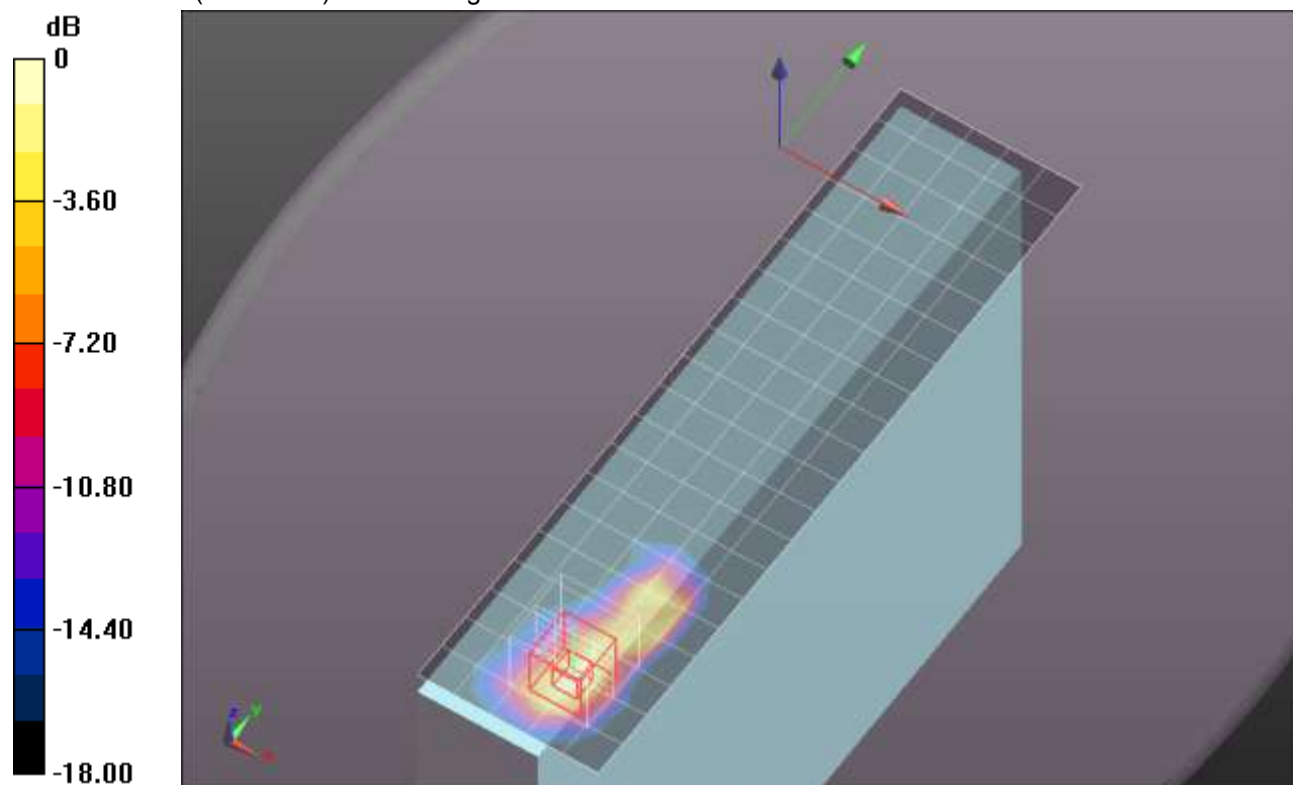
**Edge 1 Prox. On/QPSK\_RB 50/0\_ Ch 20000/Zoom Scan (5x5x7)/Cube 0:** Measurement grid: dx=8mm, dy=8mm, dz=5mm

Reference Value = 31.752 V/m; Power Drift = -0.12 dB

Peak SAR (extrapolated) = 1.94 W/kg

**SAR(1 g) = 0.995 W/kg; SAR(10 g) = 0.456 W/kg**

Maximum value of SAR (measured) = 1.41 W/kg



0 dB = 1.41 W/kg = 1.49 dBW/kg

## LTE Band 4

Frequency: 1750 MHz; Duty Cycle: 1:1; Room Ambient Temperature: 24.0°C; Liquid Temperature: 23.0°C  
Medium parameters used:  $f = 1750$  MHz;  $\sigma = 1.474$  mho/m;  $\epsilon_r = 52.644$ ;  $\rho = 1000$  kg/m<sup>3</sup>

DASY5 Configuration:

- Area Scan Setting: Find Secondary Maximum Within: 2.0 dB and with a peak SAR value greater than 0.0012W/kg
- Electronics: DAE4 Sn1258; Calibrated: 3/8/2012
- Probe: EX3DV4 - SN3772; ConvF(7.55, 7.55, 7.55); Calibrated: 2/16/2012;
- Sensor-Surface: 2.5mm (Mechanical Surface Detection (Locations From Previous Scan Used)), Sensor-Surface: 2.5mm (Mechanical Surface Detection)
- Phantom: ELI v5.0 (A); Type: QDOVA001BB; Serial: 1119

**Edge 4 Prox. Off/QPSK\_RB 1/24\_ Ch 20350/Area Scan (7x11x1):** Measurement grid: dx=15mm, dy=15mm

Maximum value of SAR (measured) = 0.253 W/kg

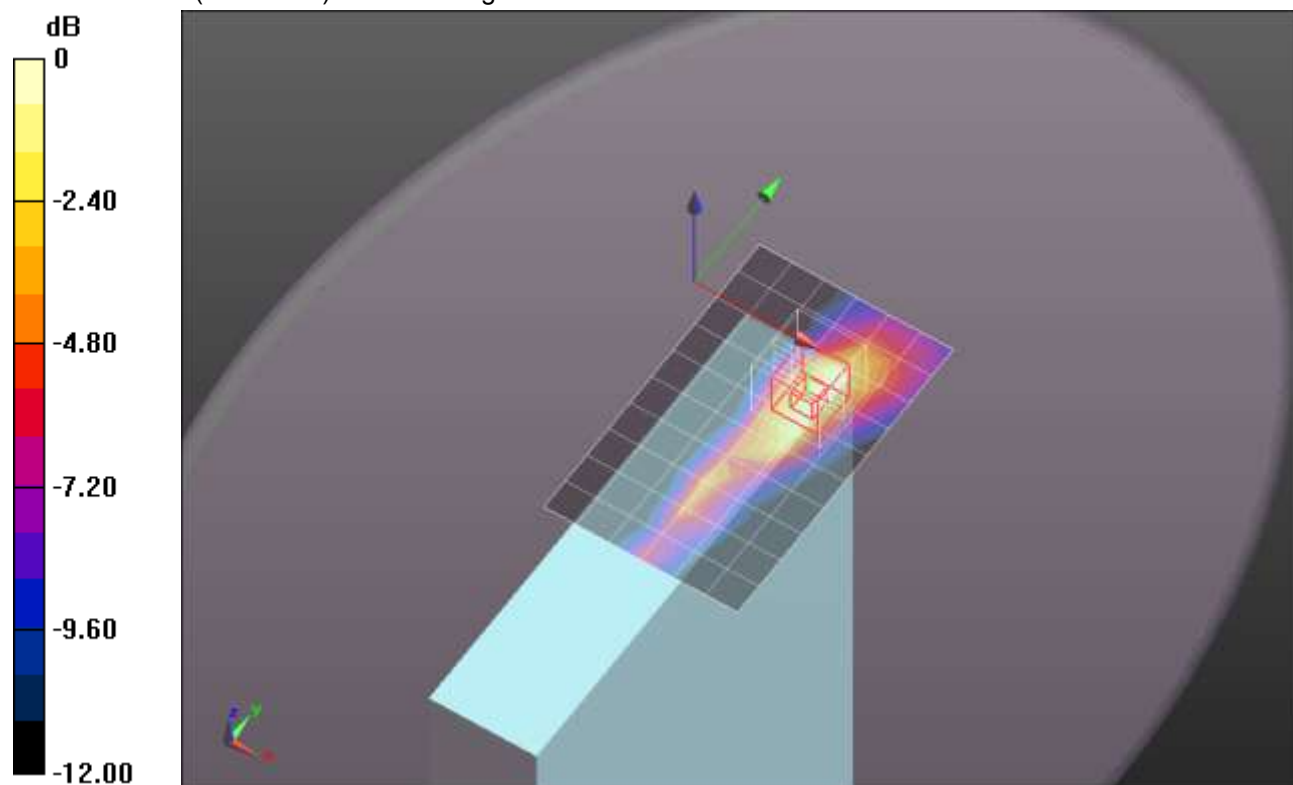
**Edge 4 Prox. Off/QPSK\_RB 1/24\_ Ch 20350/Zoom Scan (5x5x7)/Cube 0:** Measurement grid: dx=8mm, dy=8mm, dz=5mm

Reference Value = 13.230 V/m; Power Drift = 0.15 dB

Peak SAR (extrapolated) = 0.338 W/kg

**SAR(1 g) = 0.186 W/kg; SAR(10 g) = 0.104 W/kg**

Maximum value of SAR (measured) = 0.251 W/kg



0 dB = 0.251 W/kg = -6.00 dBW/kg

## LTE Band 4

Frequency: 1750 MHz; Duty Cycle: 1:1; Room Ambient Temperature: 24.0°C; Liquid Temperature: 23.0°C  
Medium parameters used:  $f = 1750$  MHz;  $\sigma = 1.474$  mho/m;  $\epsilon_r = 52.644$ ;  $\rho = 1000$  kg/m<sup>3</sup>

DASY5 Configuration:

- Area Scan Setting: Find Secondary Maximum Within: 2.0 dB and with a peak SAR value greater than 0.0012W/kg
- Electronics: DAE4 Sn1258; Calibrated: 3/8/2012
- Probe: EX3DV4 - SN3772; ConvF(7.55, 7.55, 7.55); Calibrated: 2/16/2012;
- Sensor-Surface: 2.5mm (Mechanical Surface Detection (Locations From Previous Scan Used)), Sensor-Surface: 2.5mm (Mechanical Surface Detection)
- Phantom: ELI v5.0 (A); Type: QDOVA001BB; Serial: 1119

**Edge 4 Prox. Off/QPSK\_RB 25/12\_ Ch 20350/Area Scan (7x11x1):** Measurement grid: dx=15mm, dy=15mm

Maximum value of SAR (measured) = 0.207 W/kg

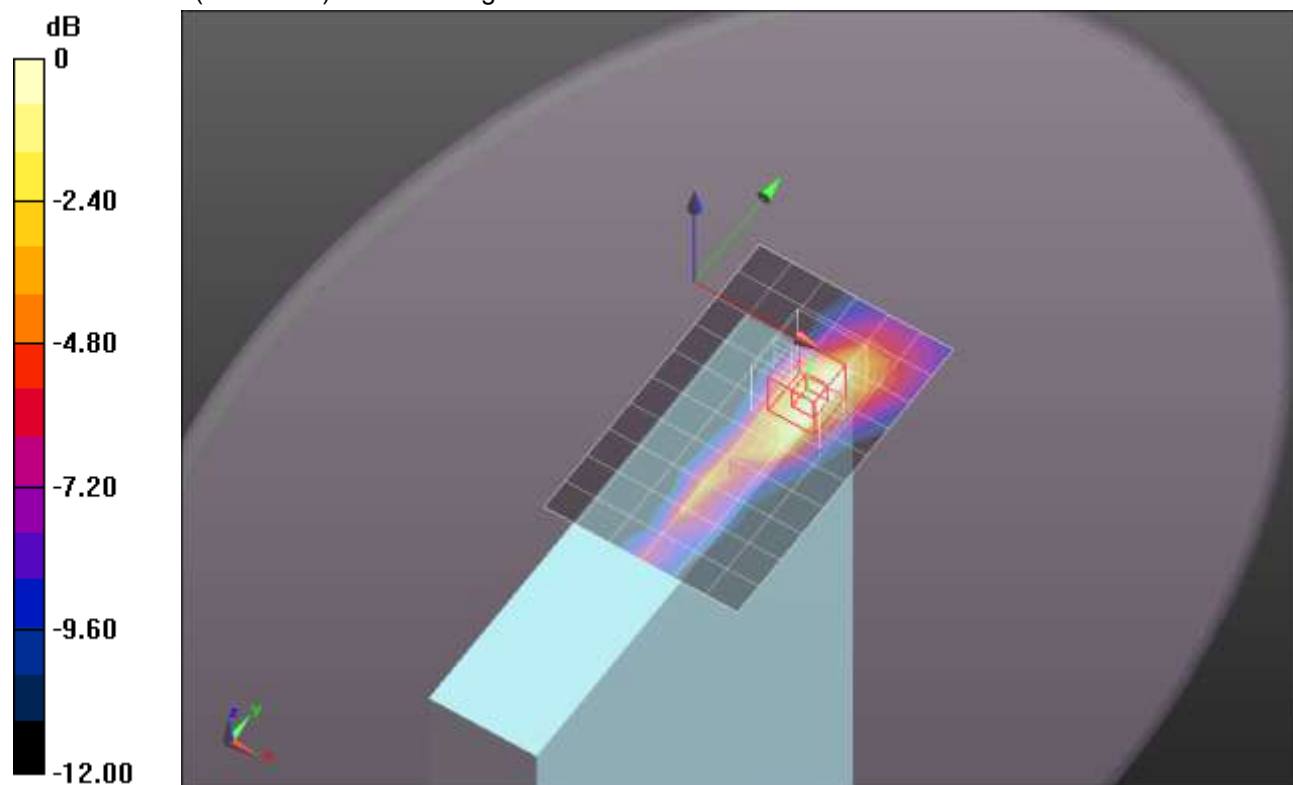
**Edge 4 Prox. Off/QPSK\_RB 25/12\_ Ch 20350/Zoom Scan (5x5x7)/Cube 0:** Measurement grid: dx=8mm, dy=8mm, dz=5mm

Reference Value = 12.047 V/m; Power Drift = 0.07 dB

Peak SAR (extrapolated) = 0.277 W/kg

**SAR(1 g) = 0.151 W/kg; SAR(10 g) = 0.084 W/kg**

Maximum value of SAR (measured) = 0.205 W/kg



0 dB = 0.205 W/kg = -6.88 dBW/kg