

Multi-Band Average SAR

Multi-Band Configurations:

DASY Configuration for Edge 4/QPSK_BW-10MHz_Mid-Ch/Volume Scan:

Date/Time: 1/25/2012 1:02:36 PM

Test Laboratory: UL CCS SAR Lab C

File Name: [TD-CDMA 2.6GHz Band Volume Scan.da52:0](#)

Communication System: TD-CDMA; Frequency: 2593 MHz; Duty Cycle: 1:3.0; PMF: 1

Medium: MSL2600 Medium parameters used (interpolated): $f = 2593$ MHz; $\sigma = 2.205$ mho/m; $\epsilon_r = 53.859$; $\rho = 1000$ kg/m³

Phantom section: Flat Section

Measurement Standard: DASY5 (IEEE/IEC/ANSI C63.19-2007)

- Probe: EX3DV4 - SN3751; ConvF(6.4, 6.4, 6.4); Calibrated: 12/19/2011
 - Sensor-Surface: 2.5mm (Mechanical Surface Detection)
 - Electronics: DAE4 Sn1239; Calibrated: 10/18/2011
 - Phantom: ELI v5.0 (A); Type: QDOVA001BB; Serial: 1117
 - Measurement SW: DASY52, Version 52.8 (0)
-

DASY Configuration for Edge 4/802.11a_Ant B_ch 36 Volume Scan/Volume Scan:

Date/Time: 1/25/2012 10:28:55 PM

Test Laboratory: UL CCS SAR Lab C

File Name: [WiFi 802.11a 5.2GHz Volume Scan.da52:0](#)

Communication System: IEEE 802.11a/n 5 GHz Band; Frequency: 5180 MHz; Duty Cycle: 1:1; PMF: 1

Medium: MSL5800 Medium parameters used: $f = 5180$ MHz; $\sigma = 5.403$ mho/m; $\epsilon_r = 48.283$; $\rho = 1000$ kg/m³

Phantom section: Flat Section

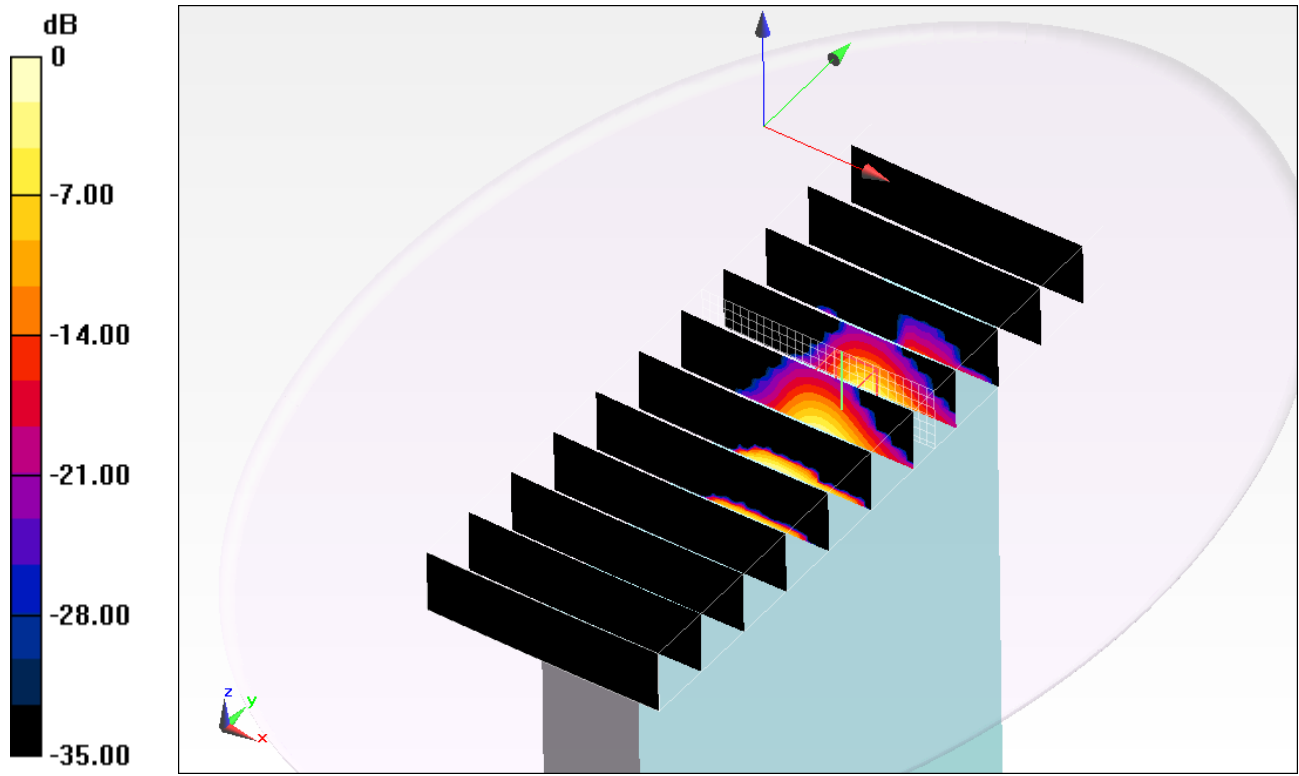
Measurement Standard: DASY5 (IEEE/IEC/ANSI C63.19-2007)

- Probe: EX3DV4 - SN3751; ConvF(4.05, 4.05, 4.05); Calibrated: 12/19/2011
 - Sensor-Surface: 2.5mm (Mechanical Surface Detection)
 - Electronics: DAE4 Sn1239; Calibrated: 10/18/2011
 - Phantom: ELI v5.0 (B); Type: QDOVA001BB; Serial: 1121
 - Measurement SW: DASY52, Version 52.8 (0)
-

Multi Band Result:

SAR(1 g) = 1.07 mW/g; SAR(10 g) = 0.505 mW/g

Maximum value of SAR (interpolated) = 2.165 mW/g



0 dB = 2.160mW/g = 6.69 dB mW/g

Multi-Band Average SAR

Multi-Band Configurations:

DASY Configuration for Edge 4/QPSK_BW-10MHz_Mid-Ch/Volume Scan:

Date/Time: 1/25/2012 1:02:36 PM

Test Laboratory: UL CCS SAR Lab C

File Name: [TD-CDMA 2.6GHz Band Volume Scan.da52:0](#)

Communication System: TD-CDMA; Frequency: 2593 MHz; Duty Cycle: 1:3.0; PMF: 1

Medium: MSL2600 Medium parameters used (interpolated): $f = 2593$ MHz; $\sigma = 2.205$ mho/m; $\epsilon_r = 53.859$; $\rho = 1000$ kg/m³

Phantom section: Flat Section

Measurement Standard: DASY5 (IEEE/IEC/ANSI C63.19-2007)

- Probe: EX3DV4 - SN3751; ConvF(6.4, 6.4, 6.4); Calibrated: 12/19/2011
 - Sensor-Surface: 2.5mm (Mechanical Surface Detection)
 - Electronics: DAE4 Sn1239; Calibrated: 10/18/2011
 - Phantom: ELI v5.0 (A); Type: QDOVA001BB; Serial: 1117
 - Measurement SW: DASY52, Version 52.8 (0)
-

DASY Configuration for Edge 4/802.11a_Ant B_ch 60 Volume Scan/Volume Scan:

Date/Time: 1/26/2012 10:07:13 AM

Test Laboratory: UL CCS SAR Lab C

File Name: [WiFi 802.11a 5.3GHz Volume Scan.da52:0](#)

Communication System: IEEE 802.11a/n 5 GHz Band; Frequency: 5300 MHz; Duty Cycle: 1:1; PMF: 1

Medium: MSL5800 Medium parameters used: $f = 5300$ MHz; $\sigma = 5.571$ mho/m; $\epsilon_r = 48.075$; $\rho = 1000$ kg/m³

Phantom section: Flat Section

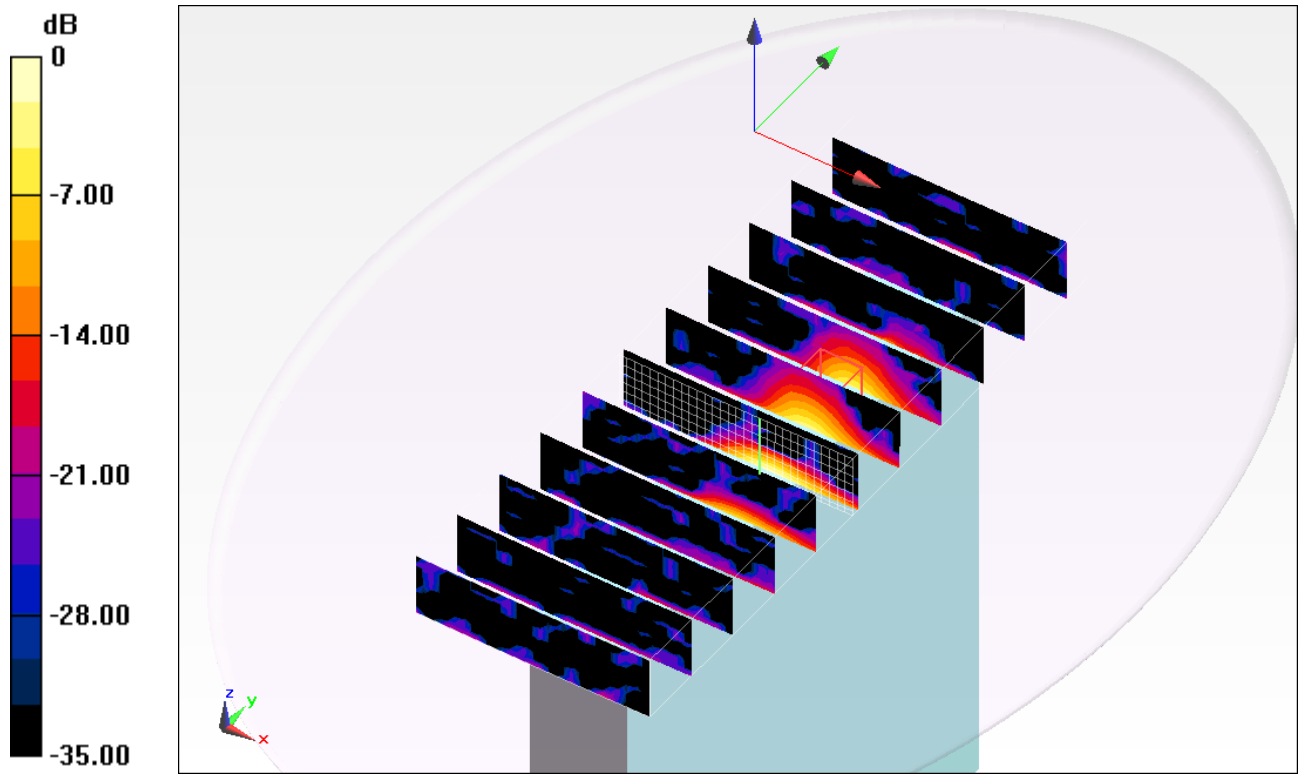
Measurement Standard: DASY5 (IEEE/IEC/ANSI C63.19-2007)

- Probe: EX3DV4 - SN3751; ConvF(3.86, 3.86, 3.86); Calibrated: 12/19/2011
 - Sensor-Surface: 2.5mm (Mechanical Surface Detection)
 - Electronics: DAE4 Sn1239; Calibrated: 10/18/2011
 - Phantom: ELI v5.0 (B); Type: QDOVA001BB; Serial: 1121
 - Measurement SW: DASY52, Version 52.8 (0)
-

Multi Band Result:

SAR(1 g) = 1.1 mW/g; SAR(10 g) = 0.519 mW/g

Maximum value of SAR (interpolated) = 2.526 mW/g



0 dB = 2.530mW/g = 8.06 dB mW/g

Multi-Band Average SAR

Multi-Band Configurations:

DASY Configuration for Edge 4/QPSK_BW-10MHz_Mid-Ch/Volume Scan:

Date/Time: 1/25/2012 1:02:36 PM

Test Laboratory: UL CCS SAR Lab C

File Name: [TD-CDMA 2.6GHz Band Volume Scan.da52:0](#)

Communication System: TD-CDMA; Frequency: 2593 MHz; Duty Cycle: 1:3.0; PMF: 1

Medium: MSL2600 Medium parameters used (interpolated): $f = 2593$ MHz; $\sigma = 2.205$ mho/m; $\epsilon_r = 53.859$; $\rho = 1000$ kg/m³

Phantom section: Flat Section

Measurement Standard: DASY5 (IEEE/IEC/ANSI C63.19-2007)

- Probe: EX3DV4 - SN3751; ConvF(6.4, 6.4, 6.4); Calibrated: 12/19/2011
 - Sensor-Surface: 2.5mm (Mechanical Surface Detection)
 - Electronics: DAE4 Sn1239; Calibrated: 10/18/2011
 - Phantom: ELI v5.0 (A); Type: QDOVA001BB; Serial: 1117
 - Measurement SW: DASY52, Version 52.8 (0)
-

DASY Configuration for Edge 4/802.11a_Ant B_ch 120 Volume Scan/Volume Scan:

Date/Time: 1/26/2012 6:44:46 PM

Test Laboratory: UL CCS SAR Lab A

File Name: [WiFi 802.11a 5.5GHz Volume Scan.da52:0](#)

Communication System: IEEE 802.11a/n 5 GHz Band; Frequency: 5600 MHz; Duty Cycle: 1:1; PMF: 1

Medium: MSL5800 Medium parameters used: $f = 5600$ MHz; $\sigma = 5.595$ mho/m; $\epsilon_r = 46.818$; $\rho = 1000$ kg/m³

Phantom section: Flat Section

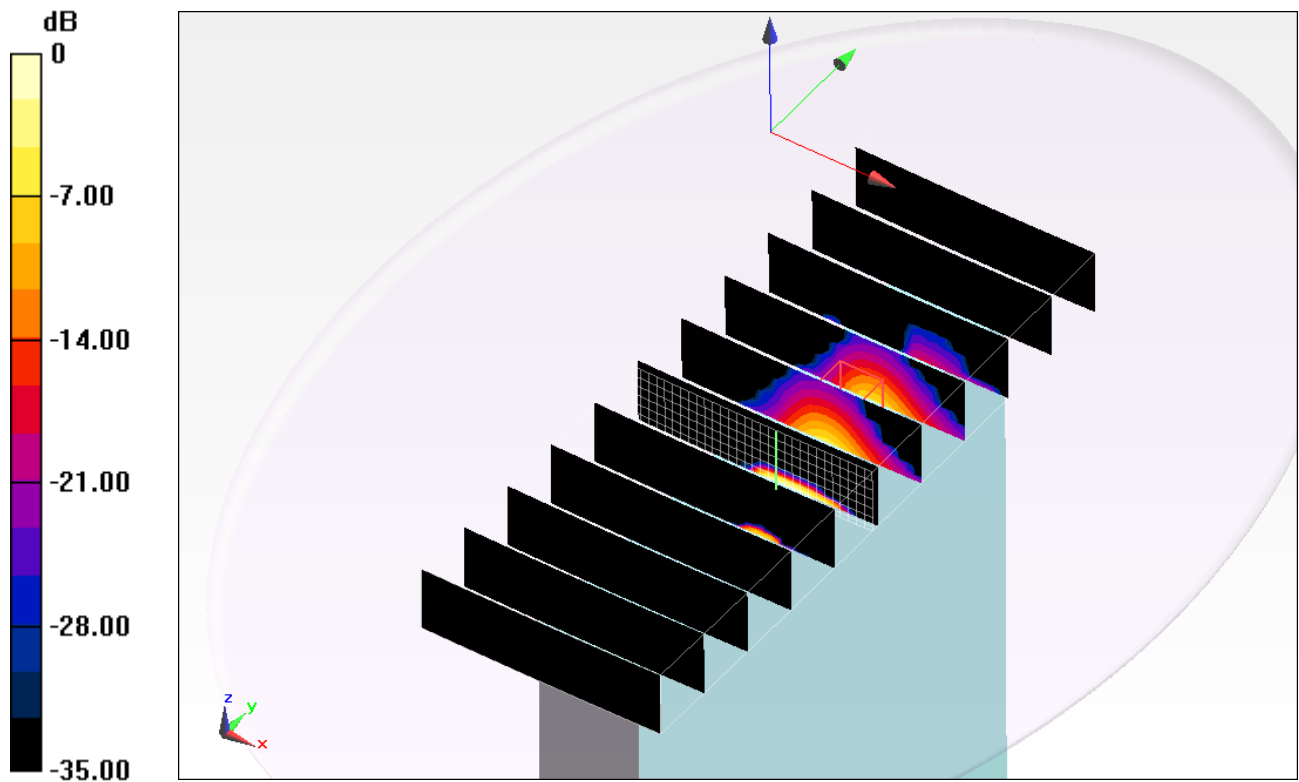
Measurement Standard: DASY5 (IEEE/IEC/ANSI C63.19-2007)

- Probe: EX3DV4 - SN3751; ConvF(3.29, 3.29, 3.29); Calibrated: 12/19/2011
 - Sensor-Surface: 2.5mm (Mechanical Surface Detection)
 - Electronics: DAE4 Sn1239; Calibrated: 10/18/2011
 - Phantom: ELI v5.0 (B); Type: QDOVA001BB; Serial: 1121
 - Measurement SW: DASY52, Version 52.8 (0)
-

Multi Band Result:

SAR(1 g) = 1.06 mW/g; SAR(10 g) = 0.503 mW/g

Maximum value of SAR (interpolated) = 3.939 mW/g



0 dB = 3.940mW/g = 11.91 dB mW/g

Multi-Band Average SAR

Multi-Band Configurations:

DASY Configuration for Edge 4/QPSK_BW-10MHz_Mid-Ch/Volume Scan:

Date/Time: 1/25/2012 1:02:36 PM

Test Laboratory: UL CCS SAR Lab C

File Name: [TD-CDMA 2.6GHz Band Volume Scan.da52:0](#)

Communication System: TD-CDMA; Frequency: 2593 MHz; Duty Cycle: 1:3.0; PMF: 1

Medium: MSL2600 Medium parameters used (interpolated): $f = 2593$ MHz; $\sigma = 2.205$ mho/m; $\epsilon_r = 53.859$; $\rho = 1000$ kg/m³

Phantom section: Flat Section

Measurement Standard: DASY5 (IEEE/IEC/ANSI C63.19-2007)

- Probe: EX3DV4 - SN3751; ConvF(6.4, 6.4, 6.4); Calibrated: 12/19/2011
 - Sensor-Surface: 2.5mm (Mechanical Surface Detection)
 - Electronics: DAE4 Sn1239; Calibrated: 10/18/2011
 - Phantom: ELI v5.0 (A); Type: QDOVA001BB; Serial: 1117
 - Measurement SW: DASY52, Version 52.8 (0)
-

DASY Configuration for Edge 4/802.11a_Ant B_ch 157 Volume Scan/Volume Scan:

Date/Time: 1/27/2012 9:57:58 AM

Test Laboratory: UL CCS SAR Lab A

File Name: [WiFi 802.11a 5.8GHz Volume Scan.da52:0](#)

Communication System: IEEE 802.11a/n 5 GHz Band; Frequency: 5785 MHz; Duty Cycle: 1:1; PMF: 1

Medium: MSL5800 Medium parameters used: $f = 5785$ MHz; $\sigma = 5.787$ mho/m; $\epsilon_r = 46.439$; $\rho = 1000$ kg/m³

Phantom section: Flat Section

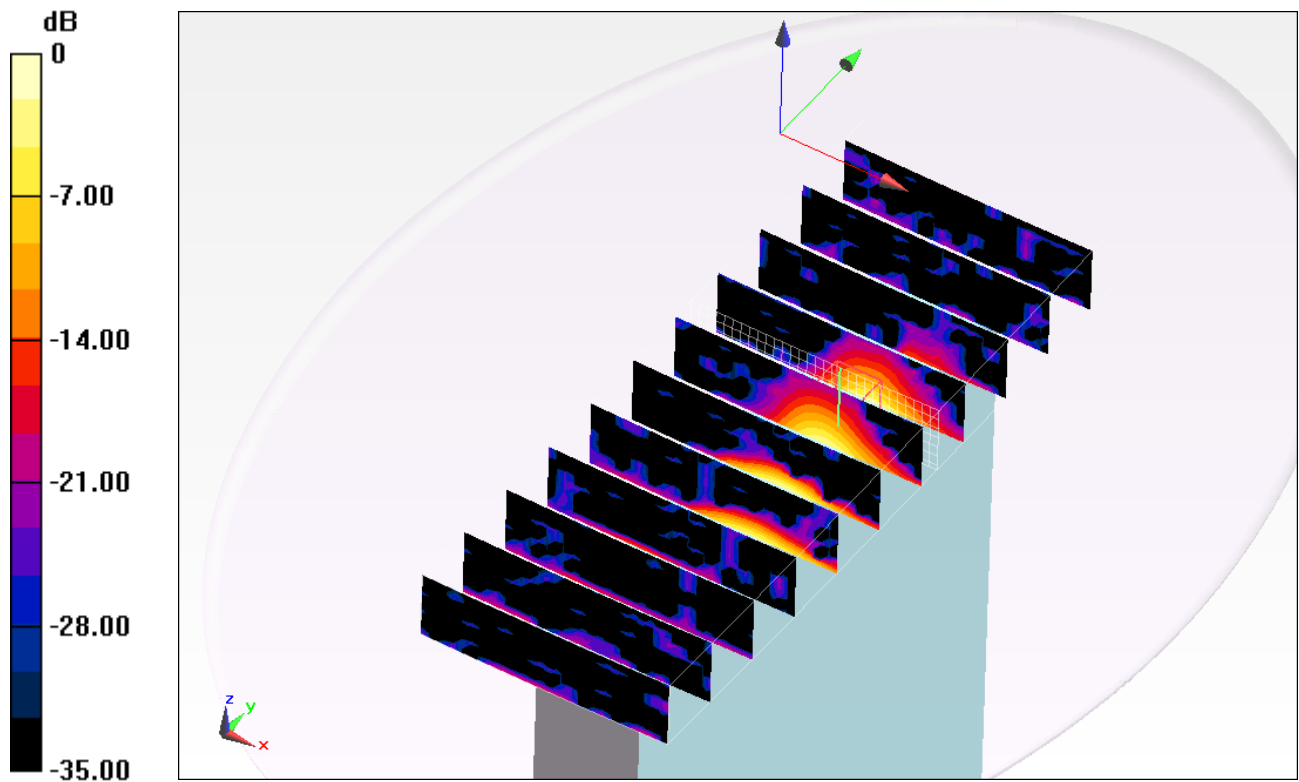
Measurement Standard: DASY5 (IEEE/IEC/ANSI C63.19-2007)

- Probe: EX3DV4 - SN3751; ConvF(3.62, 3.62, 3.62); Calibrated: 12/19/2011
 - Sensor-Surface: 2.5mm (Mechanical Surface Detection)
 - Electronics: DAE4 Sn1239; Calibrated: 10/18/2011
 - Phantom: ELI v5.0 (B); Type: QDOVA001BB; Serial: 1121
 - Measurement SW: DASY52, Version 52.8 (0)
-

Multi Band Result:

SAR(1 g) = 1.06 mW/g; SAR(10 g) = 0.510 mW/g

Maximum value of SAR (interpolated) = 2.109 mW/g



0 dB = 2.110mW/g = 6.49 dB mW/g