

## 20120120\_SystemPerformanceCheck-D2600V2 SN 1036

Frequency: 2600 MHz; Duty Cycle: 1:1; Room Ambient Temperature: 24.0°C; Liquid Temperature: 23.0°C

Medium parameters used:  $f = 2600$  MHz;  $\sigma = 2.227$  mho/m;  $\epsilon_r = 51.912$ ;  $\rho = 1000$  kg/m<sup>3</sup>

DASY5 Configuration:

- Electronics: DAE4 Sn1239; Calibrated: 10/18/2011
- Probe: EX3DV4 - SN3751; ConvF(6.4, 6.4, 6.4); Calibrated: 12/19/2011
- Sensor-Surface: 2.5mm (Mechanical Surface Detection)
- Phantom: ELI v5.0 (A); Type: QDOVA001BB; Serial: 1117

**Body/Pin=100 mW/Area Scan (7x7x1):** Measurement grid: dx=15mm, dy=15mm

Maximum value of SAR (measured) = 7.275 mW/g

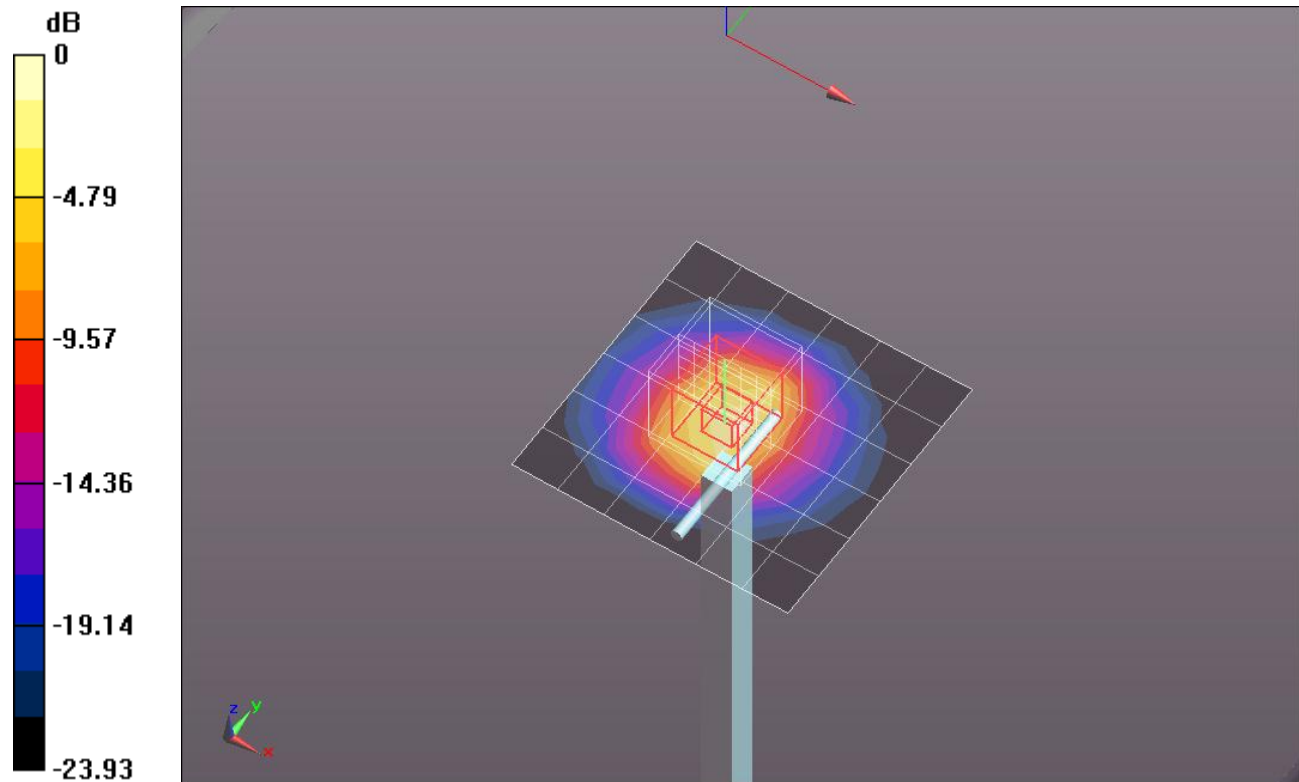
**Body/Pin=100 mW/Zoom Scan (7x7x7)/Cube 0:** Measurement grid: dx=5mm, dy=5mm, dz=5mm

Reference Value = 63.183 V/m; Power Drift = -0.01 dB

Peak SAR (extrapolated) = 13.5680

**SAR(1 g) = 6.13 mW/g; SAR(10 g) = 2.69 mW/g**

Maximum value of SAR (measured) = 8.973 mW/g

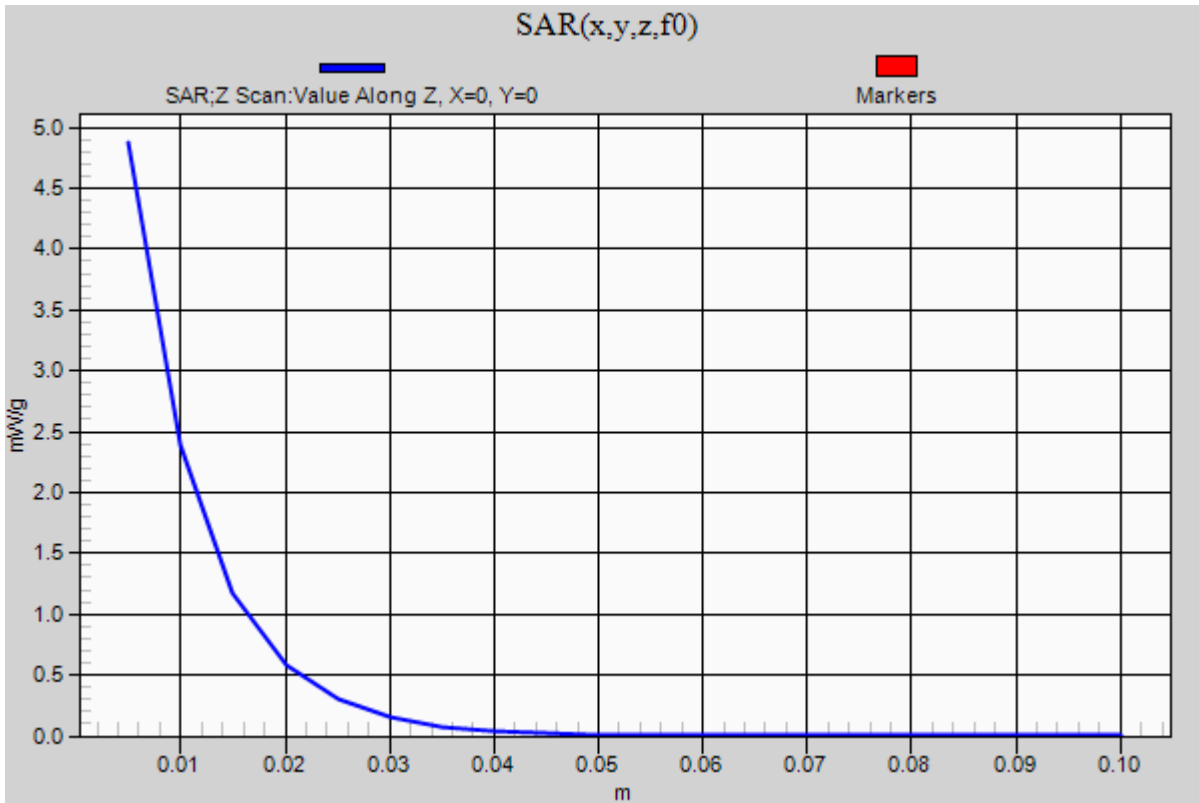


0 dB = 8.970mW/g = 19.06 dB mW/g

### 20120120\_SystemPerformanceCheck-D2600V2 SN 1036

Frequency: 2600 MHz; Duty Cycle: 1:1

**Body/Pin=100 mW/Z Scan (1x1x21):** Measurement grid: dx=20mm, dy=20mm, dz=5mm  
Maximum value of SAR (measured) = 4.873 mW/g



## 20120123\_SystemPerformanceCheck-D2600V2 SN 1036

Frequency: 2600 MHz; Duty Cycle: 1:1; Room Ambient Temperature: 24.0°C; Liquid Temperature: 23.0°C

Medium parameters used:  $f = 2600$  MHz;  $\sigma = 2.216$  mho/m;  $\epsilon_r = 51.103$ ;  $\rho = 1000$  kg/m<sup>3</sup>

DASY5 Configuration:

- Electronics: DAE4 Sn1239; Calibrated: 10/18/2011
- Probe: EX3DV4 - SN3751; ConvF(6.4, 6.4, 6.4); Calibrated: 12/19/2011
- Sensor-Surface: 2.5mm (Mechanical Surface Detection)
- Phantom: ELI v5.0 (A); Type: QDOVA001BB; Serial: 1117

**Body/Pin=100 mW/Area Scan (7x7x1):** Measurement grid: dx=15mm, dy=15mm

Maximum value of SAR (measured) = 6.910 mW/g

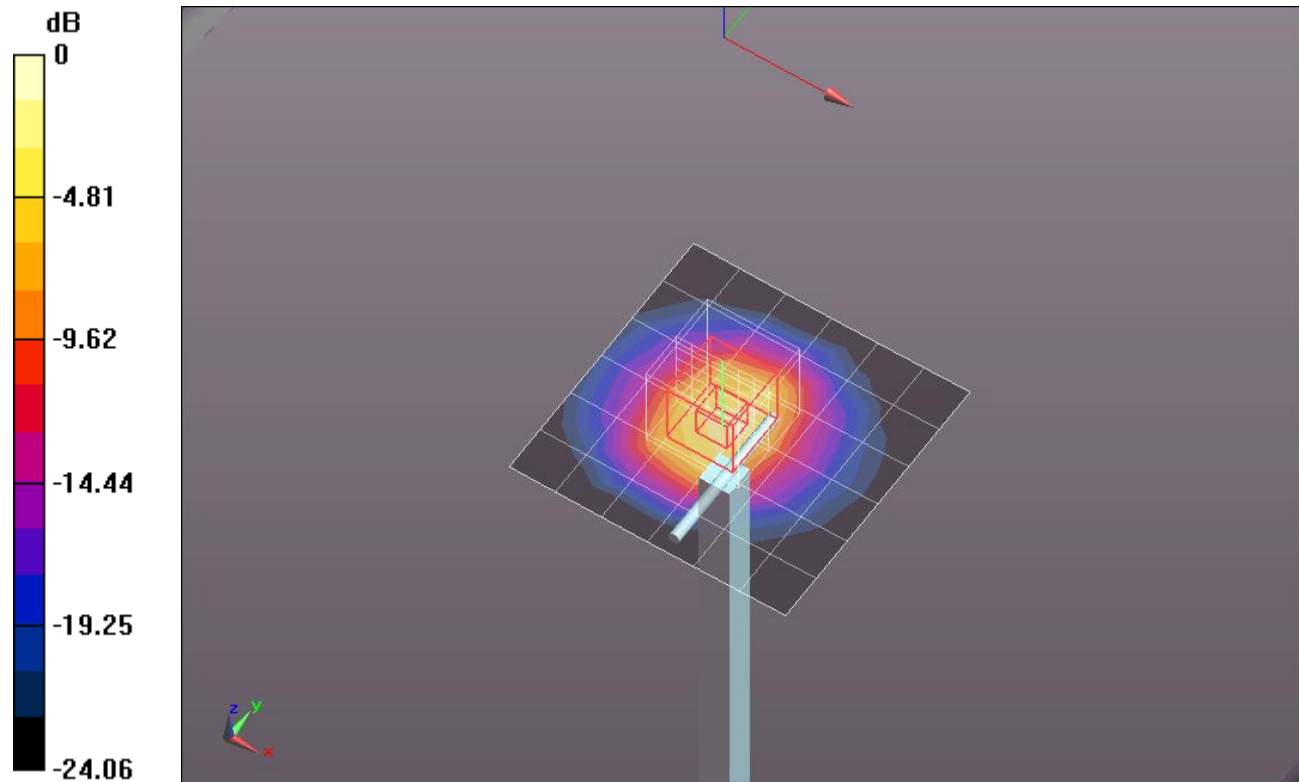
**Body/Pin=100 mW/Zoom Scan (7x7x7)/Cube 0:** Measurement grid: dx=5mm, dy=5mm, dz=5mm

Reference Value = 63.359 V/m; Power Drift = 0.0019 dB

Peak SAR (extrapolated) = 13.4730

**SAR(1 g) = 6.12 mW/g; SAR(10 g) = 2.7 mW/g**

Maximum value of SAR (measured) = 8.897 mW/g

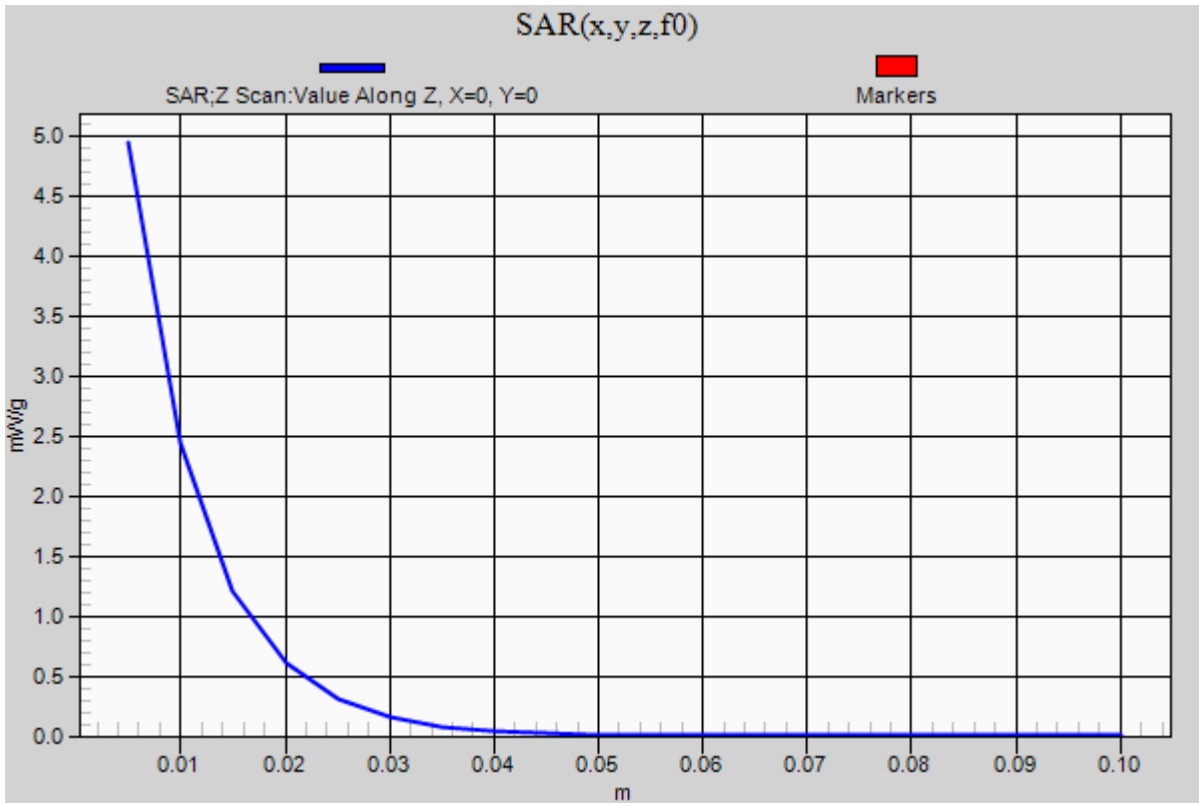


0 dB = 8.900mW/g = 18.99 dB mW/g

### 20120123\_SystemPerformanceCheck-D2600V2 SN 1036

Frequency: 2600 MHz; Duty Cycle: 1:1

**Body/Pin=100 mW/Z Scan (1x1x21):** Measurement grid: dx=20mm, dy=20mm, dz=5mm  
Maximum value of SAR (measured) = 4.949 mW/g



## 20120124\_SystemPerformanceCheck-D2600V2 SN 1036

Frequency: 2600 MHz; Duty Cycle: 1:1; Room Ambient Temperature: 24.0°C; Liquid Temperature: 23.0°C

Medium parameters used:  $f = 2600$  MHz;  $\sigma = 2.212$  mho/m;  $\epsilon_r = 51.955$ ;  $\rho = 1000$  kg/m<sup>3</sup>

DASY5 Configuration:

- Electronics: DAE4 Sn1239; Calibrated: 10/18/2011
- Probe: EX3DV4 - SN3751; ConvF(6.4, 6.4, 6.4); Calibrated: 12/19/2011
- Sensor-Surface: 2.5mm (Mechanical Surface Detection)
- Phantom: ELI v5.0 (A); Type: QDOVA001BB; Serial: 1117

**Body/Pin=100 mW/Area Scan (7x7x1):** Measurement grid: dx=15mm, dy=15mm

Maximum value of SAR (measured) = 6.914 mW/g

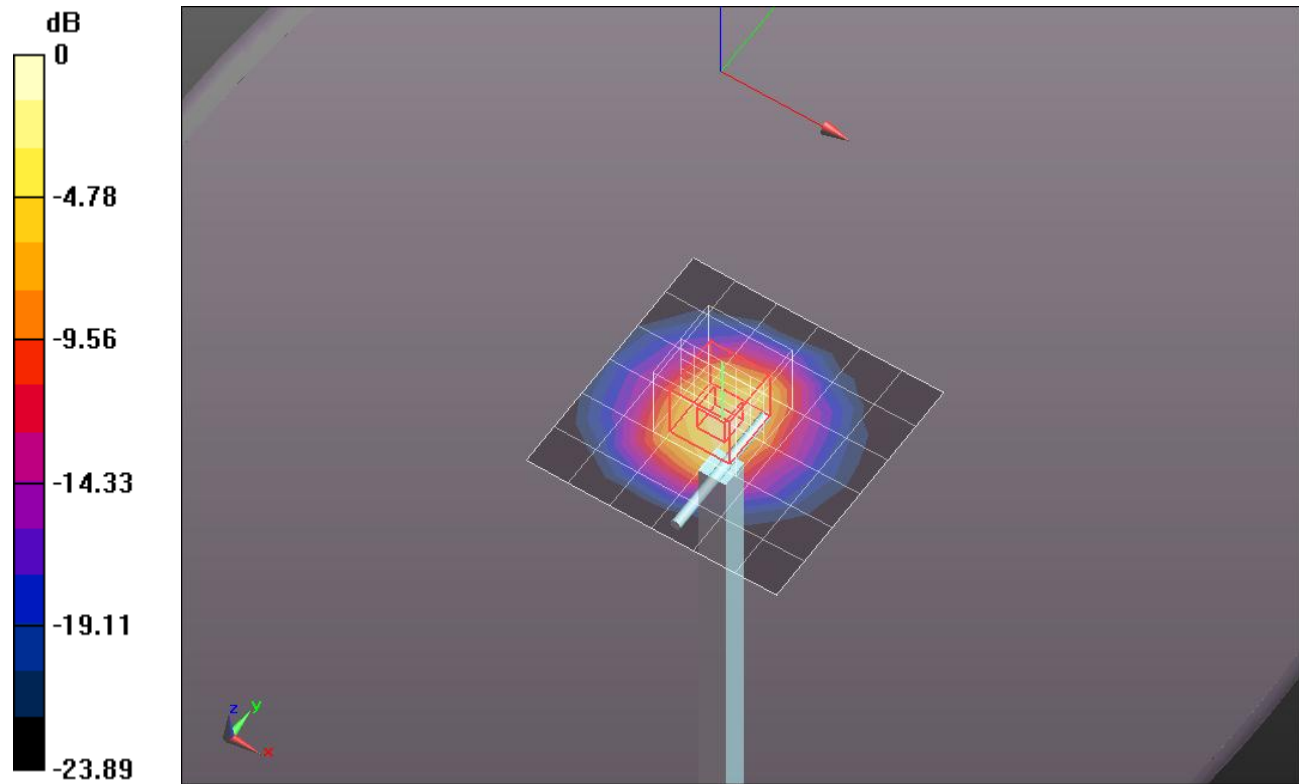
**Body/Pin=100 mW/Zoom Scan (7x7x7)/Cube 0:** Measurement grid: dx=5mm, dy=5mm, dz=5mm

Reference Value = 62.686 V/m; Power Drift = 0.01 dB

Peak SAR (extrapolated) = 13.0230

**SAR(1 g) = 5.91 mW/g; SAR(10 g) = 2.6 mW/g**

Maximum value of SAR (measured) = 8.601 mW/g

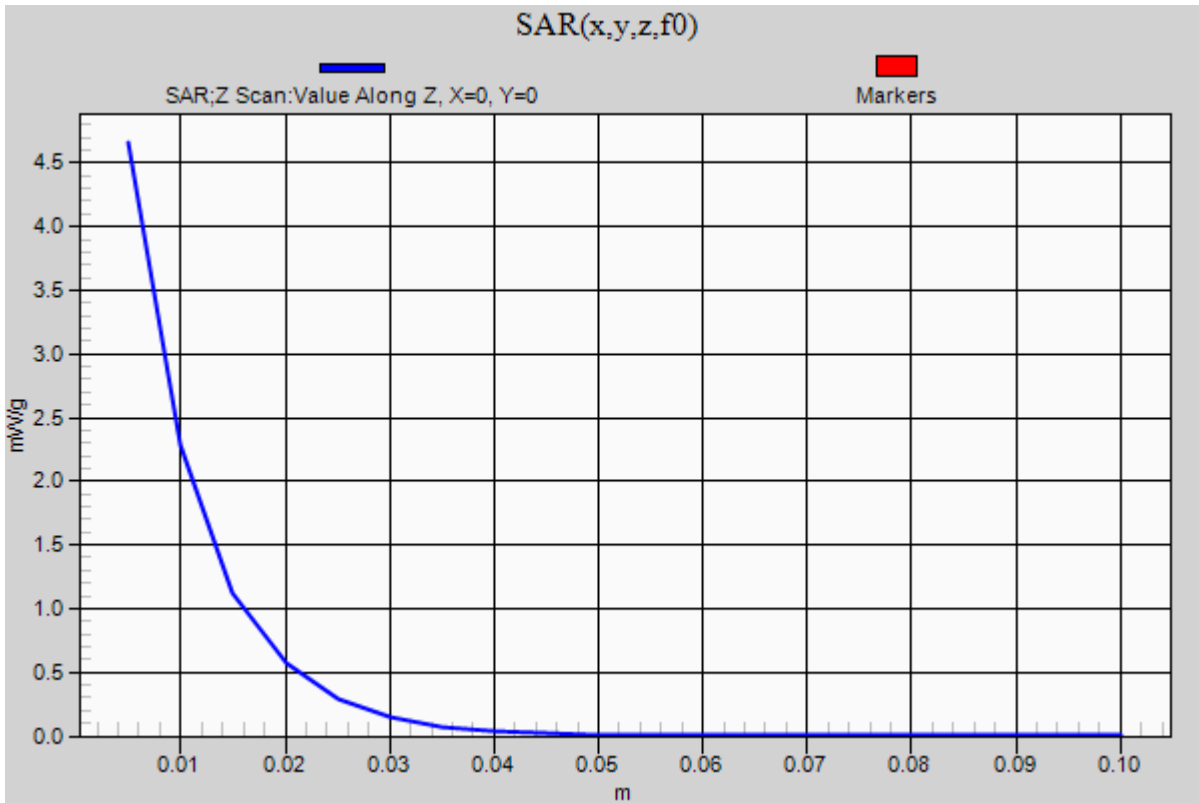


0 dB = 8.600mW/g = 18.69 dB mW/g

### 20120124\_SystemPerformanceCheck-D2600V2 SN 1036

Frequency: 2600 MHz; Duty Cycle: 1:1

**Body/Pin=100 mW/Z Scan (1x1x21):** Measurement grid: dx=20mm, dy=20mm, dz=5mm  
Maximum value of SAR (measured) = 4.658 mW/g



## 20120125\_SystemPerformanceCheck-D2600V2 SN 1036

Frequency: 2600 MHz; Duty Cycle: 1:1; Room Ambient Temperature: 24.0°C; Liquid Temperature: 23.0°C  
 Medium parameters used:  $f = 2600$  MHz;  $\sigma = 2.22$  mho/m;  $\epsilon_r = 53.79$ ;  $\rho = 1000$  kg/m<sup>3</sup>  
 DASYS Configuration:

- Electronics: DAE4 Sn1239; Calibrated: 10/18/2011
- Probe: EX3DV4 - SN3751; ConvF(6.4, 6.4, 6.4); Calibrated: 12/19/2011
- Sensor-Surface: 2.5mm (Mechanical Surface Detection)
- Phantom: ELI v5.0 (A); Type: QDOVA001BB; Serial: 1117

**Body/Pin=100 mW/Area Scan (7x7x1):** Measurement grid: dx=15mm, dy=15mm

Maximum value of SAR (measured) = 6.290 mW/g

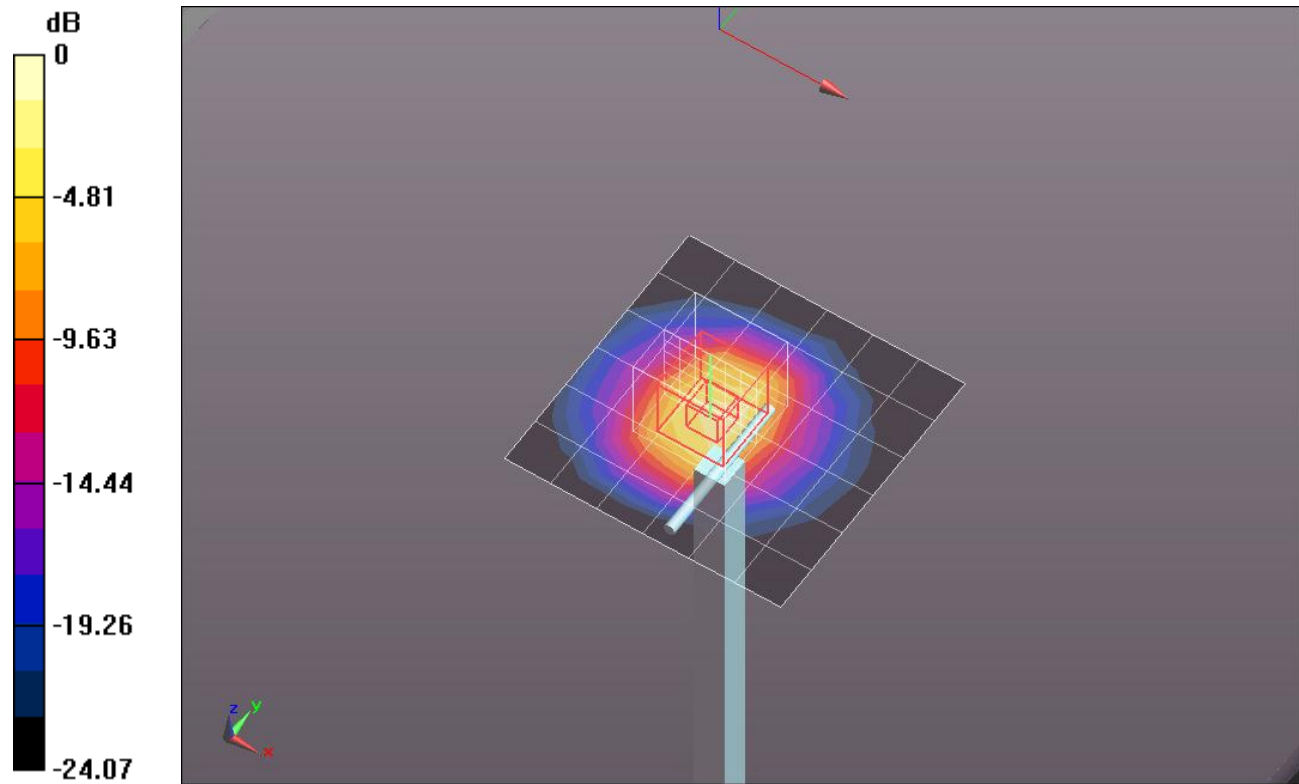
**Body/Pin=100 mW/Zoom Scan (7x7x7)/Cube 0:** Measurement grid: dx=5mm, dy=5mm, dz=5mm

Reference Value = 61.825 V/m; Power Drift = 0.03 dB

Peak SAR (extrapolated) = 13.0800

**SAR(1 g) = 5.89 mW/g; SAR(10 g) = 2.58 mW/g**

Maximum value of SAR (measured) = 8.592 mW/g

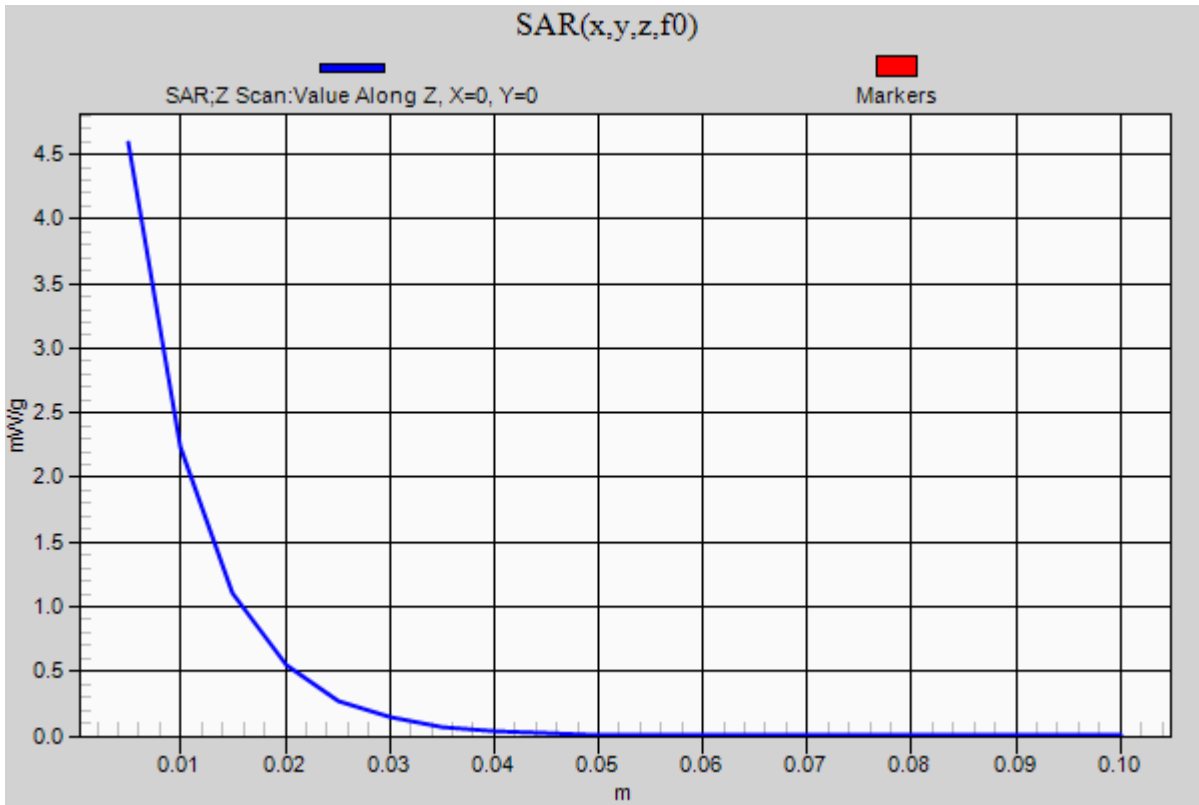


0 dB = 8.590mW/g = 18.68 dB mW/g

### 20120125\_SystemPerformanceCheck-D2600V2 SN 1036

Frequency: 2600 MHz; Duty Cycle: 1:1

**Body/Pin=100 mW/Z Scan (1x1x21):** Measurement grid: dx=20mm, dy=20mm, dz=5mm  
Maximum value of SAR (measured) = 4.589 mW/g



## 20120125\_SystemPerformanceCheck-D5GHzV2 SN 1003

Frequency: 5200 MHz; Duty Cycle: 1:1; Room Ambient Temperature: 24.0°C; Liquid Temperature: 23.0°C

Medium parameters used:  $f = 5200$  MHz;  $\sigma = 5.44$  mho/m;  $\epsilon_r = 48.309$ ;  $\rho = 1000$  kg/m<sup>3</sup>

DASY5 Configuration:

- Electronics: DAE4 Sn1239; Calibrated: 10/18/2011
- Probe: EX3DV4 - SN3751; ConvF(4.05, 4.05, 4.05); Calibrated: 12/19/2011
- Sensor-Surface: 2.5mm (Mechanical Surface Detection (Locations From Previous Scan Used)), Sensor-Surface: 2.5mm (Mechanical Surface Detection)
- Phantom: ELI v5.0 (B); Type: QDOVA001BB; Serial: 1121

**Body/5.2 GHz, Pin=100mW 2/Area Scan (7x7x1):** Measurement grid: dx=10mm, dy=10mm

Maximum value of SAR (measured) = 11.824 mW/g

**Body/5.2 GHz, Pin=100mW 2/Zoom Scan (8x8x10)/Cube 0:** Measurement grid: dx=4mm, dy=4mm,

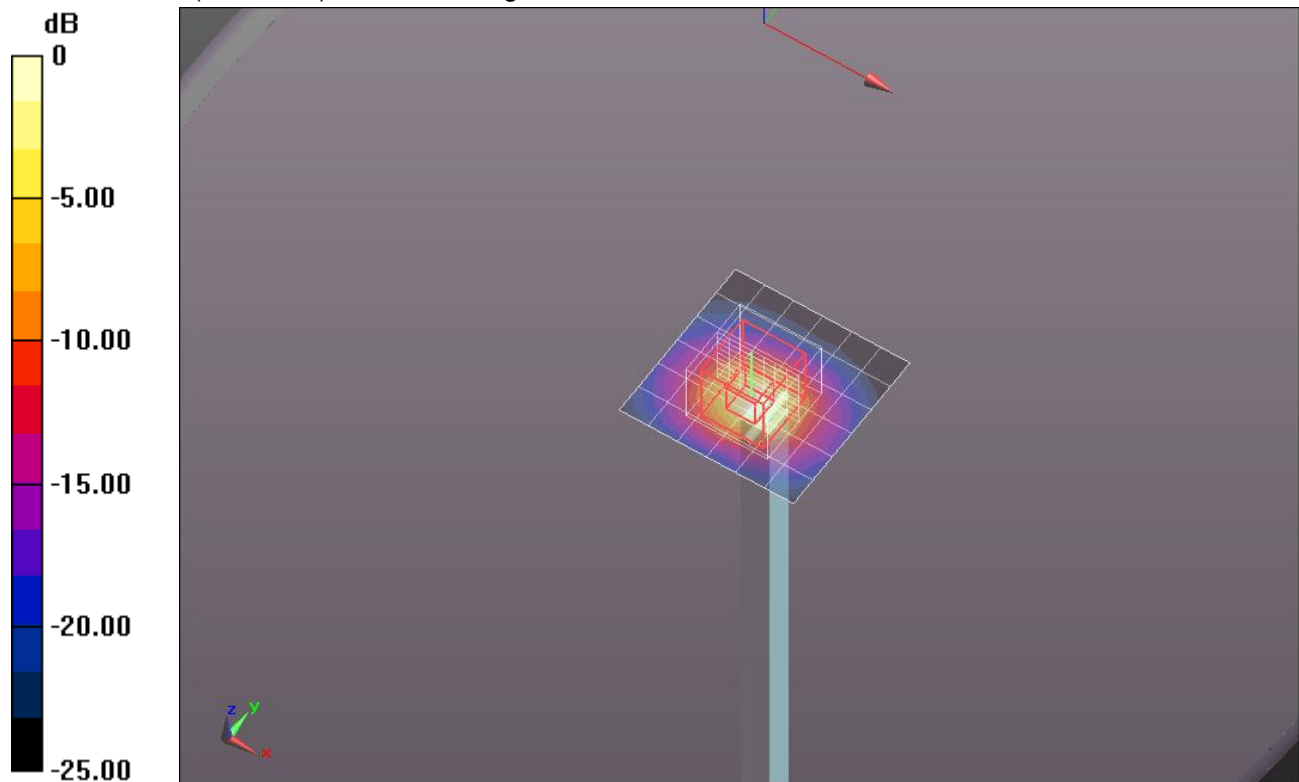
dz=2.5mm

Reference Value = 43.277 V/m; Power Drift = 0.03 dB

Peak SAR (extrapolated) = 28.7480

**SAR(1 g) = 7.74 mW/g; SAR(10 g) = 2.19 mW/g**

Maximum value of SAR (measured) = 13.937 mW/g

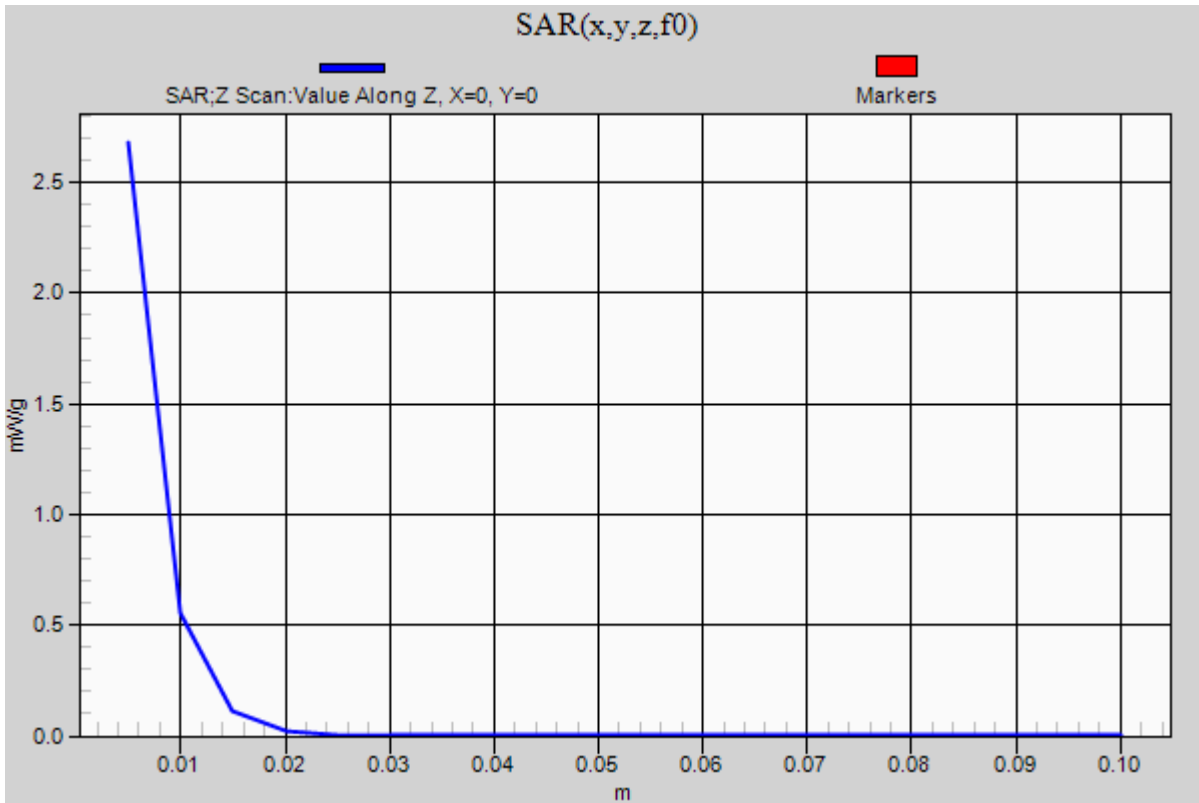


0 dB = 13.940mW/g = 22.89 dB mW/g

### 20120125\_SystemPerformanceCheck-D5GHzV2 SN 1003

Frequency: 5200 MHz; Duty Cycle: 1:1

**Body/5.2 GHz, Pin=100mW 2/Z Scan (1x1x21):** Measurement grid: dx=20mm, dy=20mm, dz=5mm  
Maximum value of SAR (measured) = 2.680 mW/g



## 20120126\_SystemPerformanceCheck-D5GHzV2 SN 1003

Frequency: 5500 MHz; Duty Cycle: 1:1; Room Ambient Temperature: 25.0°C; Liquid Temperature: 24.0°C  
 Medium parameters used:  $f = 5500$  MHz;  $\sigma = 5.487$  mho/m;  $\epsilon_r = 46.999$ ;  $\rho = 1000$  kg/m<sup>3</sup>

DASY5 Configuration:

- Electronics: DAE4 Sn1239; Calibrated: 10/18/2011
- Probe: EX3DV4 - SN3751; ConvF(3.57, 3.57, 3.57); Calibrated: 12/19/2011
- Sensor-Surface: 2.5mm (Mechanical Surface Detection)
- Phantom: ELI v5.0 (B); Type: QDOVA001BB; Serial: 1121

**Body/5.5 GHz, Pin=100mW/Area Scan (7x7x1):** Measurement grid: dx=10mm, dy=10mm

Maximum value of SAR (measured) = 11.070 mW/g

**Body/5.5 GHz, Pin=100mW/Zoom Scan (8x8x10)/Cube 0:** Measurement grid: dx=4mm, dy=4mm,

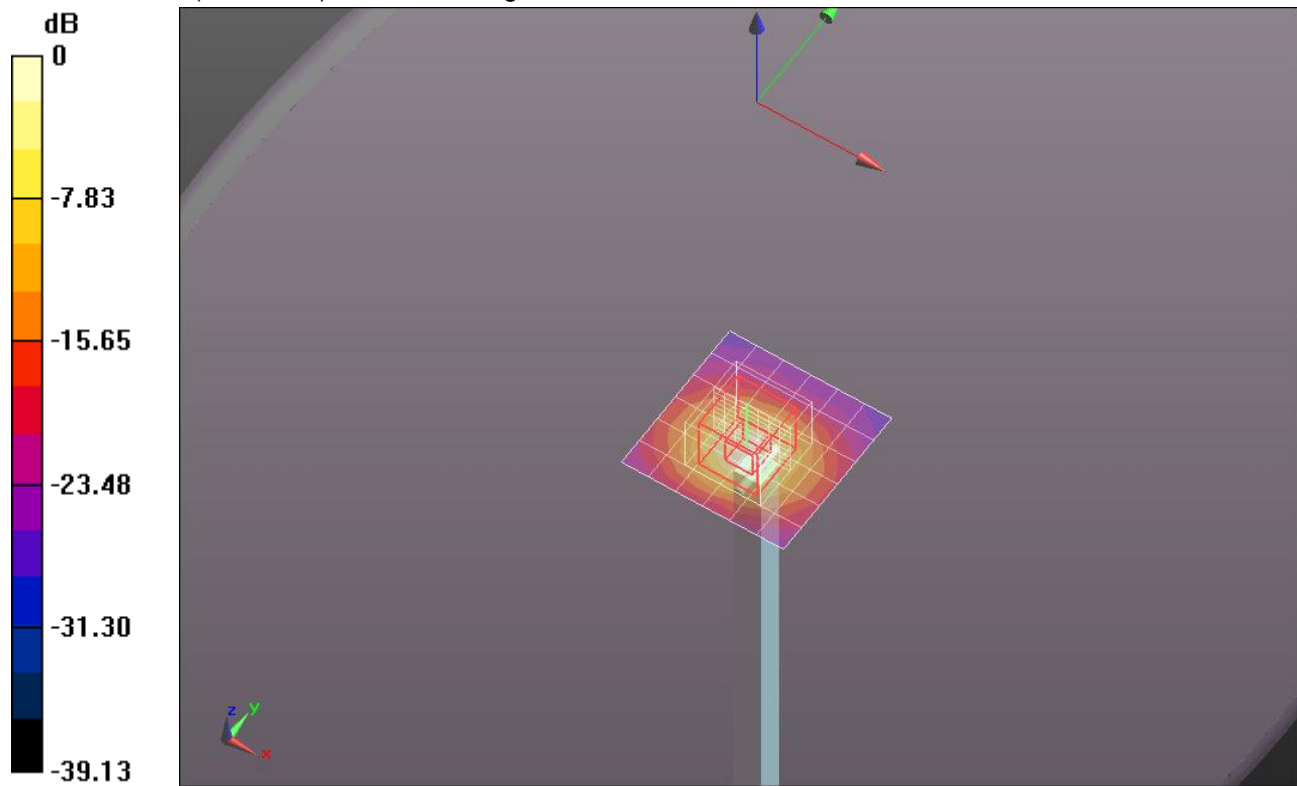
dz=2.5mm

Reference Value = 46.754 V/m; Power Drift = 0.08 dB

Peak SAR (extrapolated) = 30.1250

**SAR(1 g) = 7.81 mW/g; SAR(10 g) = 2.19 mW/g**

Maximum value of SAR (measured) = 14.032 mW/g

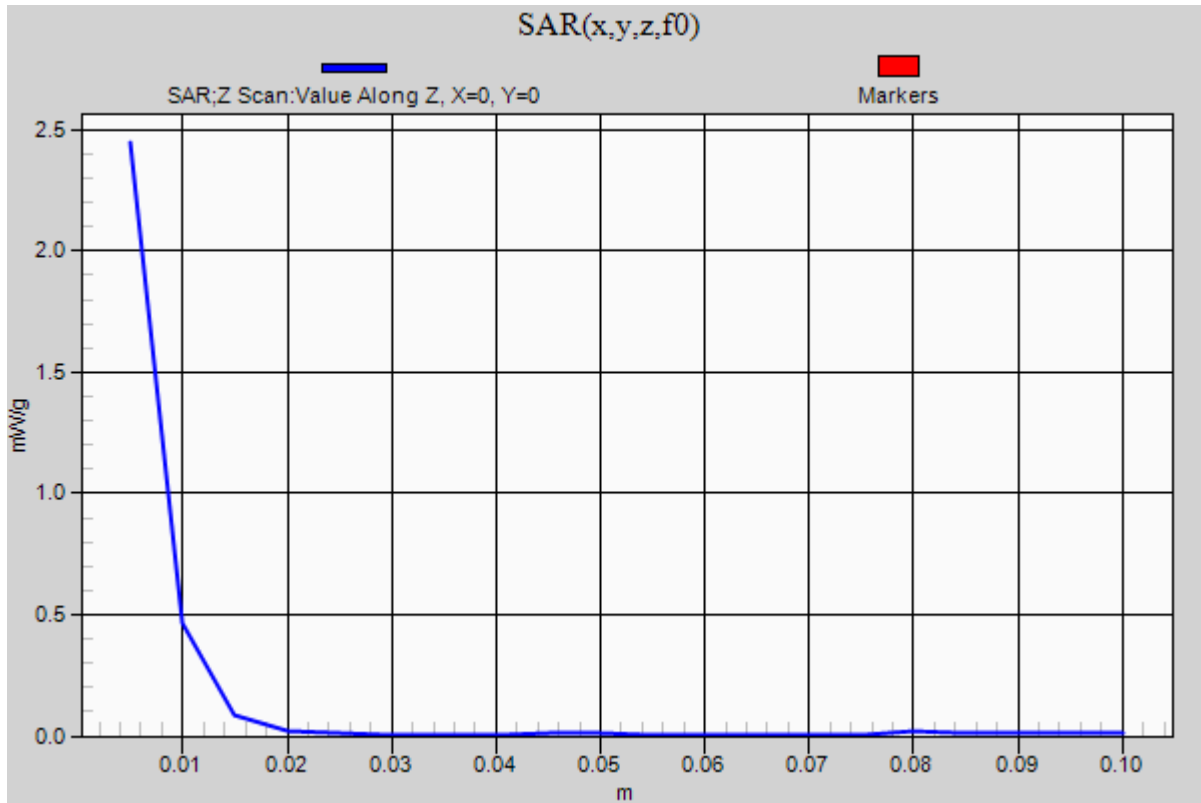


0 dB = 14.030mW/g = 22.94 dB mW/g

### 20120126\_SystemPerformanceCheck-D5GHzV2 SN 1003

Frequency: 5500 MHz; Duty Cycle: 1:1

**Body/5.5 GHz, Pin=100mW/Z Scan (1x1x21):** Measurement grid: dx=20mm, dy=20mm, dz=5mm  
Maximum value of SAR (measured) = 2.446 mW/g



## 20120126\_SystemPerformanceCheck-D5GHzV2 SN 1003

Frequency: 5800 MHz; Duty Cycle: 1:1; Room Ambient Temperature: 25.0°C; Liquid Temperature: 24.0°C  
 Medium parameters used:  $f = 5800$  MHz;  $\sigma = 5.809$  mho/m;  $\epsilon_r = 46.415$ ;  $\rho = 1000$  kg/m<sup>3</sup>  
 DASY5 Configuration:

- Electronics: DAE4 Sn1239; Calibrated: 10/18/2011
- Probe: EX3DV4 - SN3751; ConvF(3.62, 3.62, 3.62); Calibrated: 12/19/2011
- Sensor-Surface: 2.5mm (Mechanical Surface Detection)
- Phantom: ELI v5.0 (B); Type: QDOVA001BB; Serial: 1121

**Body/5.8 GHz, Pin=100mW/Area Scan (7x7x1):** Measurement grid: dx=10mm, dy=10mm

Maximum value of SAR (measured) = 10.920 mW/g

**Body/5.8 GHz, Pin=100mW/Zoom Scan (8x8x10)/Cube 0:** Measurement grid: dx=4mm, dy=4mm,

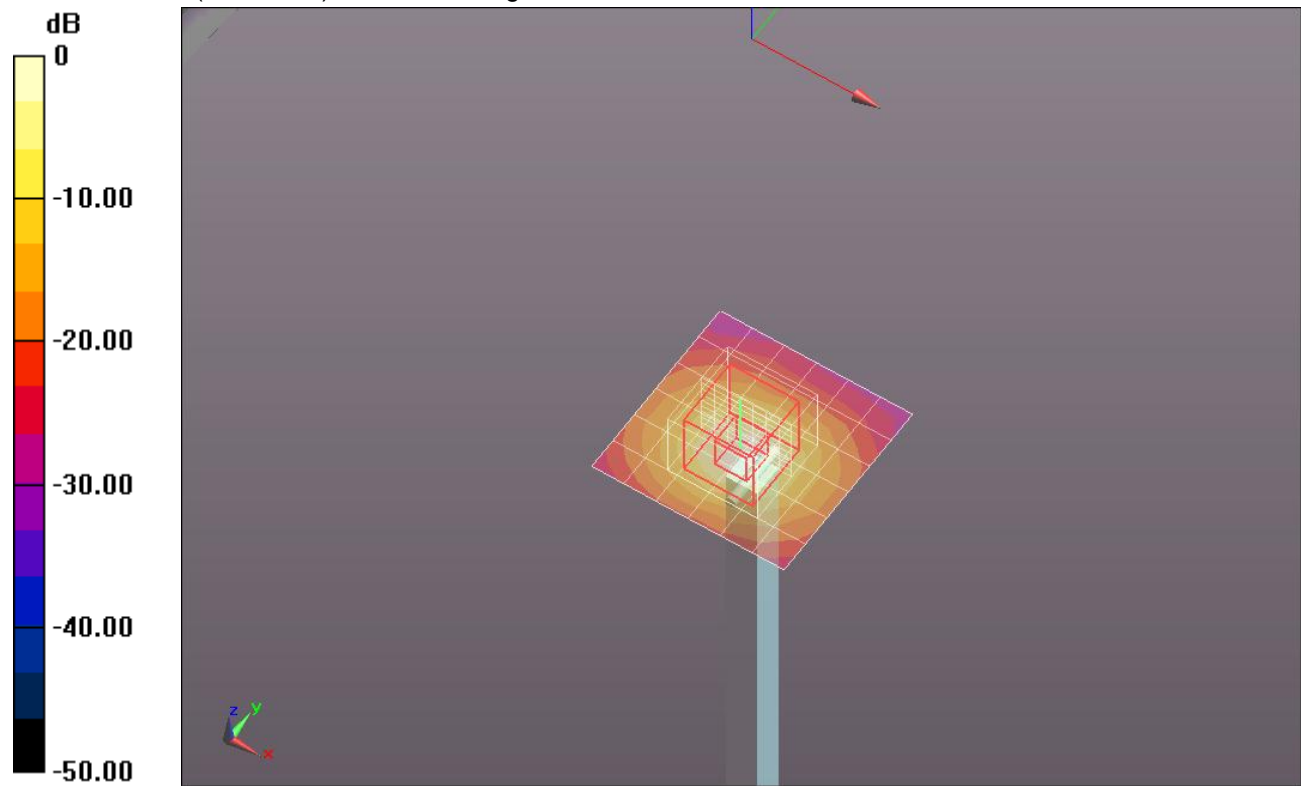
dz=2.5mm

Reference Value = 47.164 V/m; Power Drift = 0.0045 dB

Peak SAR (extrapolated) = 30.7630

**SAR(1 g) = 7.81 mW/g; SAR(10 g) = 2.2 mW/g**

Maximum value of SAR (measured) = 14.228 mW/g

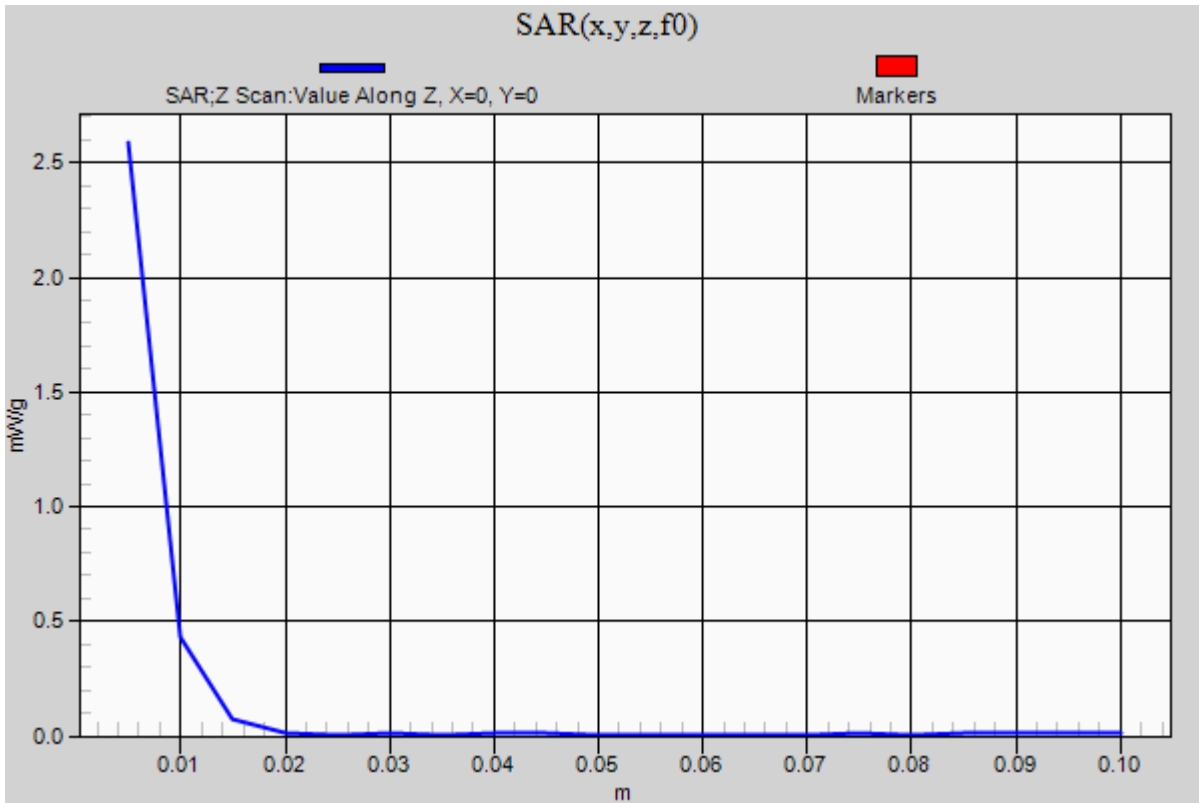


0 dB = 14.230mW/g = 23.06 dB mW/g

### 20120126\_SystemPerformanceCheck-D5GHzV2 SN 1003

Frequency: 5800 MHz; Duty Cycle: 1:1

**Body/5.8 GHz, Pin=100mW/Z Scan (1x1x21):** Measurement grid: dx=20mm, dy=20mm, dz=5mm  
Maximum value of SAR (measured) = 2.587 mW/g



## 20120127\_SystemPerformanceCheck-D2600V2 SN 1036

Frequency: 2600 MHz; Duty Cycle: 1:1; Room Ambient Temperature: 24.0°C; Liquid Temperature: 23.0°C

Medium parameters used:  $f = 2600$  MHz;  $\sigma = 2.199$  mho/m;  $\epsilon_r = 54.201$ ;  $\rho = 1000$  kg/m<sup>3</sup>

DASY5 Configuration:

- Electronics: DAE4 Sn1239; Calibrated: 10/18/2011
- Probe: EX3DV4 - SN3751; ConvF(6.4, 6.4, 6.4); Calibrated: 12/19/2011
- Sensor-Surface: 2.5mm (Mechanical Surface Detection)
- Phantom: ELI v5.0 (A); Type: QDOVA001BB; Serial: 1117

**Body/Pin=100 mW/Area Scan (7x7x1):** Measurement grid: dx=15mm, dy=15mm

Maximum value of SAR (measured) = 7.546 mW/g

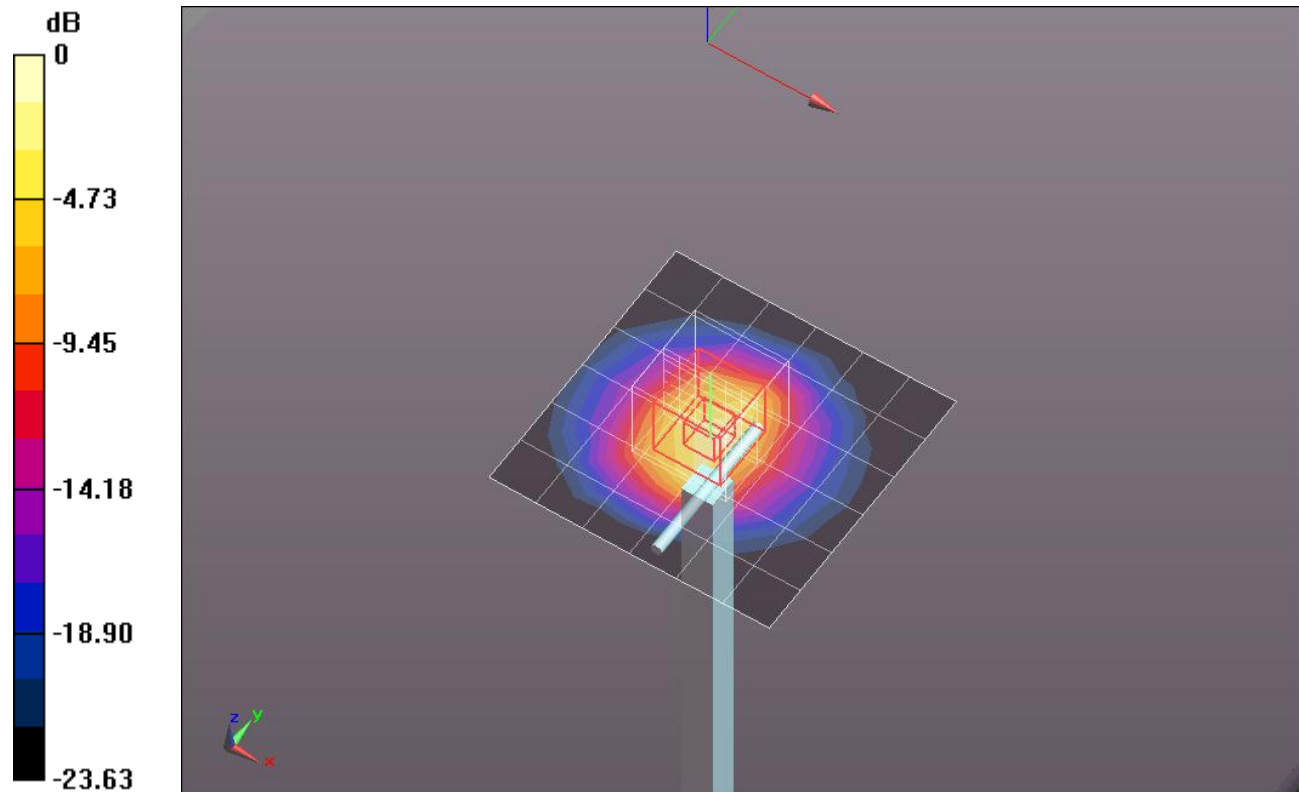
**Body/Pin=100 mW/Zoom Scan (7x7x7)/Cube 0:** Measurement grid: dx=5mm, dy=5mm, dz=5mm

Reference Value = 62.618 V/m; Power Drift = -0.02 dB

Peak SAR (extrapolated) = 13.0930

**SAR(1 g) = 6 mW/g; SAR(10 g) = 2.66 mW/g**

Maximum value of SAR (measured) = 8.675 mW/g



0 dB = 8.680mW/g = 18.77 dB mW/g

### 20120127\_SystemPerformanceCheck-D2600V2 SN 1036

Frequency: 2600 MHz; Duty Cycle: 1:1

**Body/Pin=100 mW/Z Scan (1x1x21):** Measurement grid: dx=20mm, dy=20mm, dz=5mm  
Maximum value of SAR (measured) = 4.695 mW/g

