

Test Laboratory: UL CCS SAR Lab C

TD-CDMA 2.6GHz Band_Body_Primary Portrait

Communication System: TD-CDMA; Frequency: 2593 MHz; Duty Cycle: 1:3.0

Medium parameters used (interpolated): $f = 2593$ MHz; $\sigma = 2.087$ mho/m; $\epsilon_r = 52.988$; $\rho = 1000$ kg/m³

Phantom section: Flat Section

Room Ambient Temperature: 24.0 deg. C; Liquid Temperature: 23.0 deg. C

DASY5 Configuration:

- Area Scan setting - Find Secondary Maximum Within: 2.0 dB and with a peak SAR value greater than 0.0012W/kg
- Probe: EX3DV4 - SN3772; ConvF(6.3, 6.3, 6.3); Calibrated: 5/3/2011
- Sensor-Surface: 2.5mm (Mechanical Surface Detection)
- Electronics: DAE4 Sn1239; Calibrated: 10/18/2011
- Phantom: ELI v4.0 (B); Type: QDOVA001BB; Serial: 1121
- Measurement SW: DASY52, Version 52.6 (2); SEMCAD X Version 14.4.5 (3634)

QPSK_BW-10MHz_Mid-Ch/Area Scan (81x101x1): Measurement grid: dx=15mm, dy=15mm

Info: [Interpolated medium parameters used for SAR evaluation.](#)

Maximum value of SAR (interpolated) = 0.210 mW/g

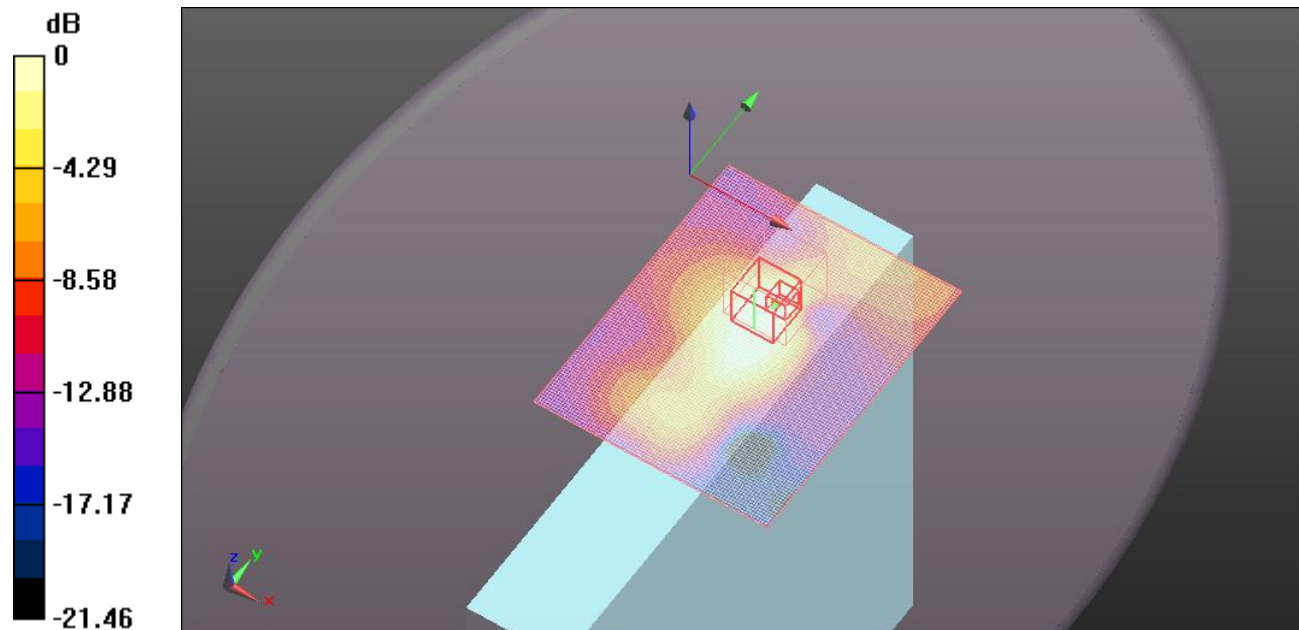
QPSK_BW-10MHz_Mid-Ch/Zoom Scan (5x5x7)/Cube 0: Measurement grid: dx=8mm, dy=8mm, dz=5mm

Reference Value = 9.126 V/m; Power Drift = 0.04 dB

Peak SAR (extrapolated) = 0.271 W/kg

SAR(1 g) = 0.117 mW/g; SAR(10 g) = 0.063 mW/gInfo: [Interpolated medium parameters used for SAR evaluation.](#)

Maximum value of SAR (measured) = 0.161 mW/g



0 dB = 0.160mW/g

Test Laboratory: UL CCS SAR Lab C

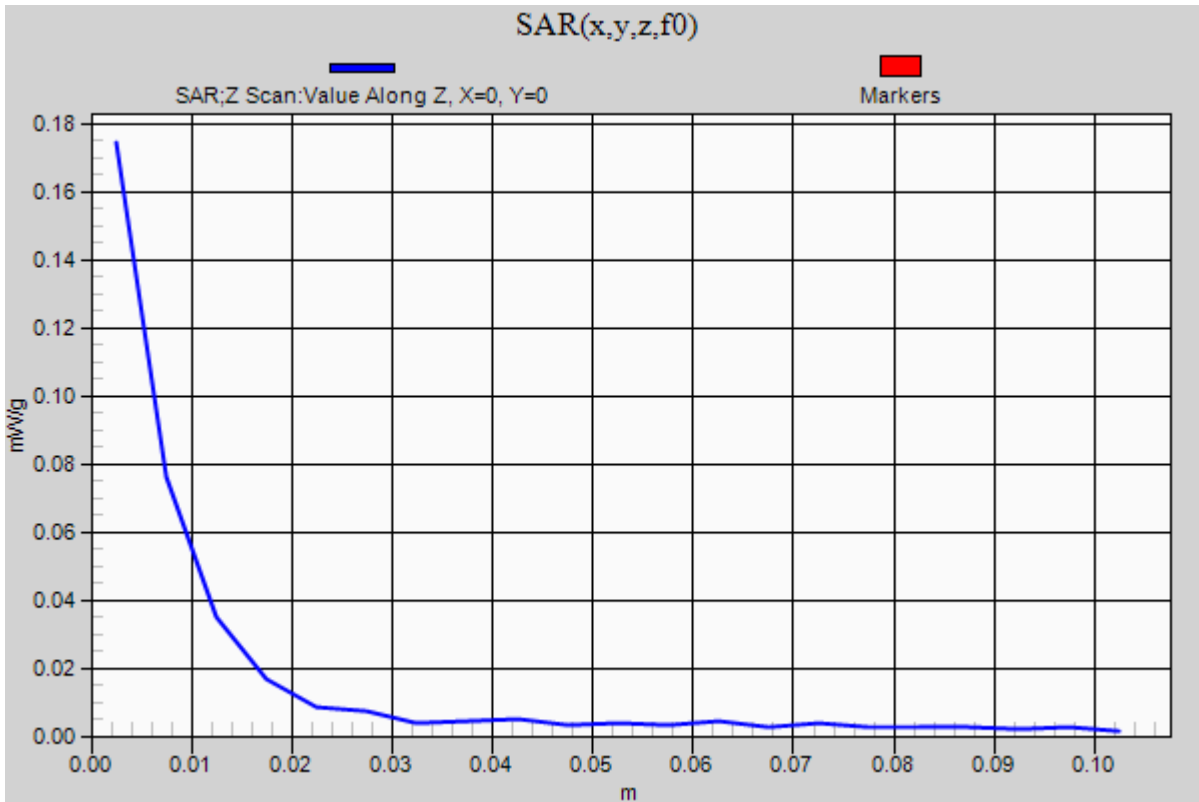
TD-CDMA 2.6GHz Band_Body_Primary Portrait

Communication System: TD-CDMA; Frequency: 2593 MHz;Duty Cycle: 1:3.0

QPSK_BW-10MHz_Mid-Ch/Z Scan (1x1x21): Measurement grid: dx=20mm, dy=20mm, dz=5mm

Info: [Interpolated medium parameters used for SAR evaluation.](#)

Maximum value of SAR (measured) = 0.174 mW/g



Test Laboratory: UL CCS SAR Lab C

TD-CDMA 2.6GHz Band_Body_Primary Portrait

Communication System: TD-CDMA; Frequency: 2593 MHz; Duty Cycle: 1:3.0

Medium parameters used (interpolated): $f = 2593$ MHz; $\sigma = 2.087$ mho/m; $\epsilon_r = 52.988$; $\rho = 1000$ kg/m³

Phantom section: Flat Section

Room Ambient Temperature: 24.0 deg. C; Liquid Temperature: 23.0 deg. C

DASY5 Configuration:

- Area Scan setting - Find Secondary Maximum Within: 2.0 dB and with a peak SAR value greater than 0.0012W/kg
- Probe: EX3DV4 - SN3772; ConvF(6.3, 6.3, 6.3); Calibrated: 5/3/2011
- Sensor-Surface: 2.5mm (Mechanical Surface Detection (Locations From Previous Scan Used)), Sensor-Surface: 2.5mm (Mechanical Surface Detection)
- Electronics: DAE4 Sn1239; Calibrated: 10/18/2011
- Phantom: ELI v4.0 (B); Type: QDOVA001BB; Serial: 1121
- Measurement SW: DASY52, Version 52.6 (2); SEMCAD X Version 14.4.5 (3634)

16QAM_BW-10MHz_Mid-Ch/Area Scan (81x101x1): Measurement grid: dx=15mm, dy=15mm

Info: [Interpolated medium parameters used for SAR evaluation.](#)

Maximum value of SAR (interpolated) = 0.226 mW/g

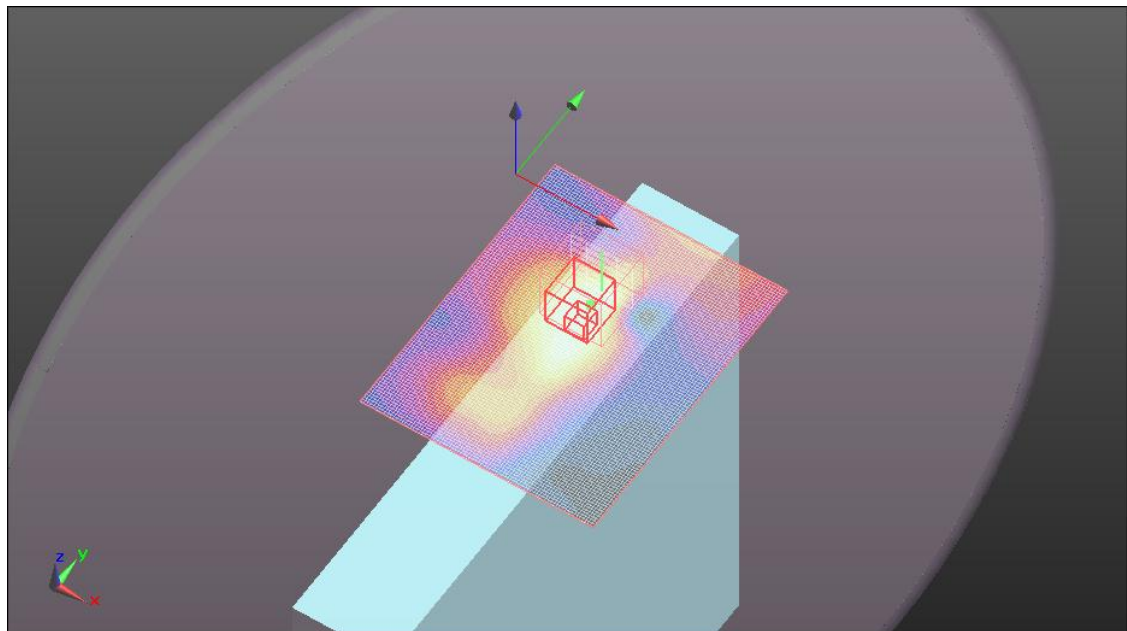
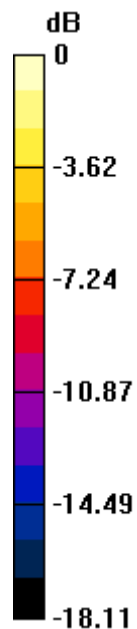
16QAM_BW-10MHz_Mid-Ch/Zoom Scan (5x5x7)/Cube 0: Measurement grid: dx=8mm, dy=8mm, dz=5mm

Reference Value = 8.750 V/m; Power Drift = 0.08 dB

Peak SAR (extrapolated) = 0.276 W/kg

SAR(1 g) = 0.127 mW/g; SAR(10 g) = 0.069 mW/gInfo: [Interpolated medium parameters used for SAR evaluation.](#)

Maximum value of SAR (measured) = 0.175 mW/g



0 dB = 0.170mW/g

Test Laboratory: UL CCS SAR Lab C

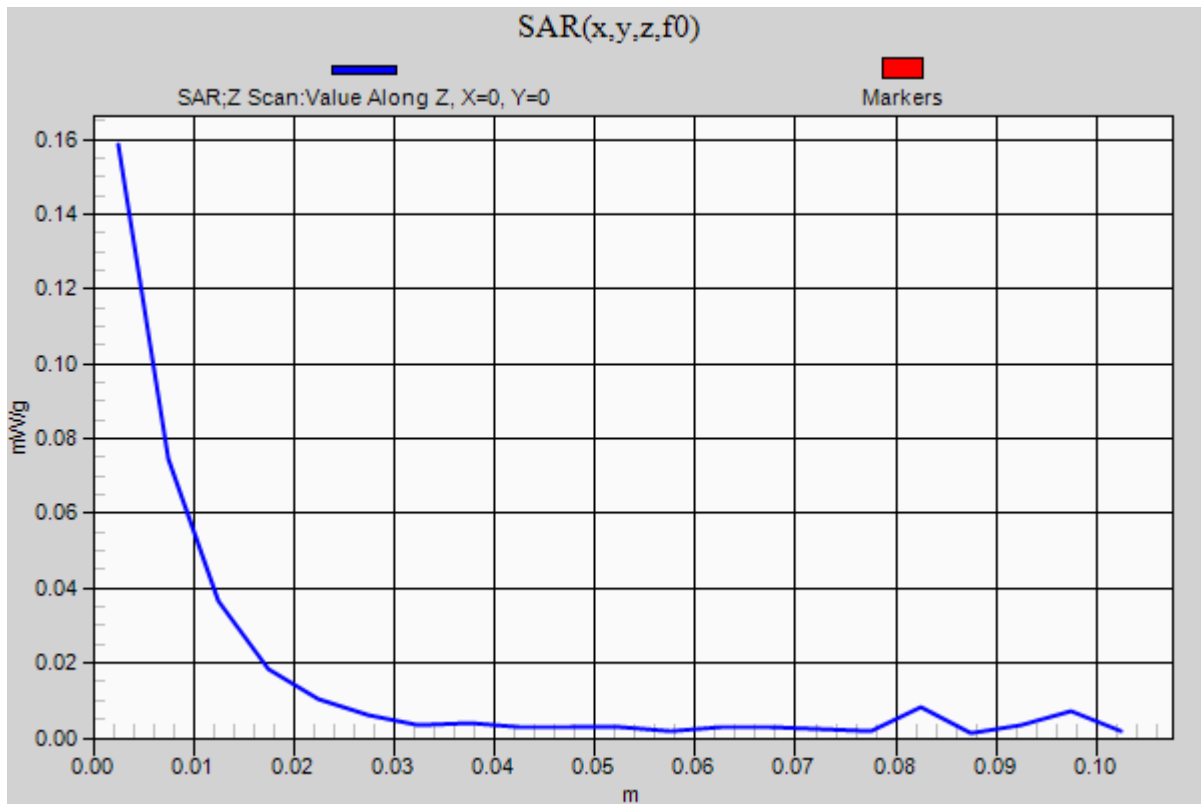
TD-CDMA 2.6GHz Band_Body_Primary Portrait

Communication System: TD-CDMA; Frequency: 2593 MHz;Duty Cycle: 1:3.0

16QAM_BW-10MHz_Mid-Ch/Z Scan (1x1x21): Measurement grid: dx=20mm, dy=20mm, dz=5mm

Info: [Interpolated medium parameters used for SAR evaluation.](#)

Maximum value of SAR (measured) = 0.159 mW/g



Test Laboratory: UL CCS SAR Lab C

TD-CDMA 2.6GHz Band_Body_Primary Portrait

Communication System: TD-CDMA; Frequency: 2593 MHz; Duty Cycle: 1:3.0

Medium parameters used (interpolated): $f = 2593$ MHz; $\sigma = 2.087$ mho/m; $\epsilon_r = 52.988$; $\rho = 1000$ kg/m³

Phantom section: Flat Section

Room Ambient Temperature: 24.0 deg. C; Liquid Temperature: 23.0 deg. C

DASY5 Configuration:

- Area Scan setting - Find Secondary Maximum Within: 2.0 dB and with a peak SAR value greater than 0.0012W/kg
- Probe: EX3DV4 - SN3772; ConvF(6.3, 6.3, 6.3); Calibrated: 5/3/2011
- Sensor-Surface: 2.5mm (Mechanical Surface Detection (Locations From Previous Scan Used)), Sensor-Surface: 2.5mm (Mechanical Surface Detection)
- Electronics: DAE4 Sn1239; Calibrated: 10/18/2011
- Phantom: ELI v4.0 (B); Type: QDOVA001BB; Serial: 1121
- Measurement SW: DASY52, Version 52.6 (2); SEMCAD X Version 14.4.5 (3634)

64QAM_BW-10MHz_Mid-Ch/Area Scan (81x101x1): Measurement grid: dx=15mm, dy=15mm

Info: [Interpolated medium parameters used for SAR evaluation.](#)

Maximum value of SAR (interpolated) = 0.225 mW/g

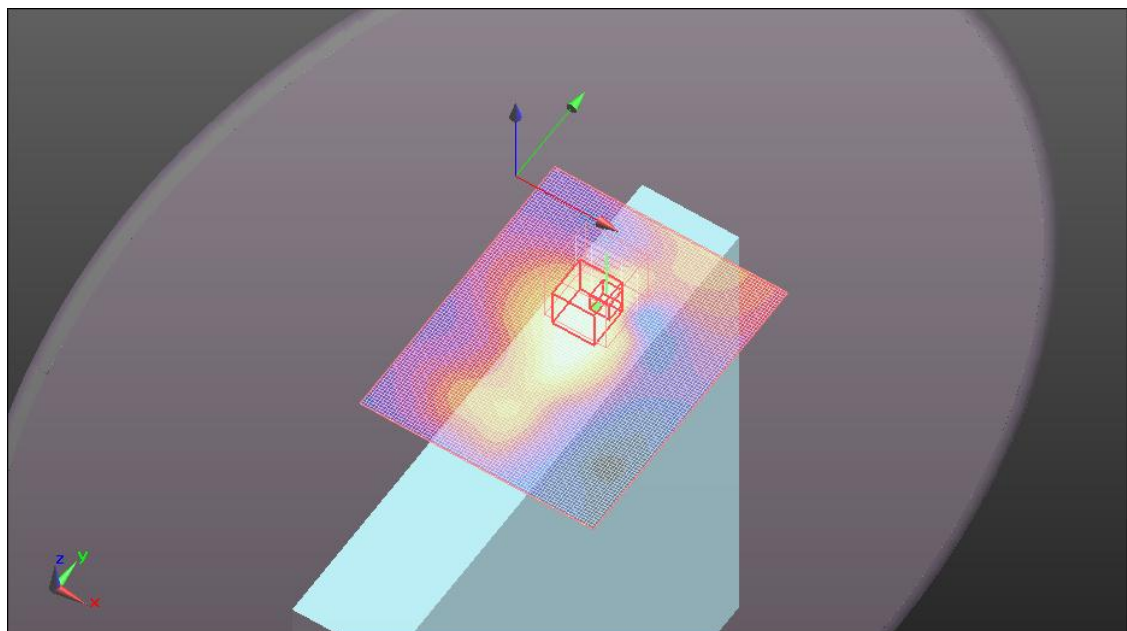
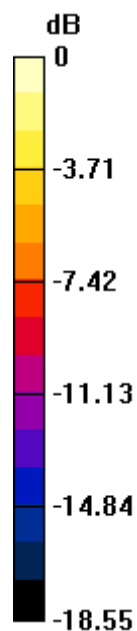
64QAM_BW-10MHz_Mid-Ch/Zoom Scan (5x5x7)/Cube 0: Measurement grid: dx=8mm, dy=8mm, dz=5mm

Reference Value = 9.242 V/m; Power Drift = 0.04 dB

Peak SAR (extrapolated) = 0.278 W/kg

SAR(1 g) = 0.123 mW/g; SAR(10 g) = 0.067 mW/gInfo: [Interpolated medium parameters used for SAR evaluation.](#)

Maximum value of SAR (measured) = 0.160 mW/g



0 dB = 0.160mW/g

Test Laboratory: UL CCS SAR Lab C

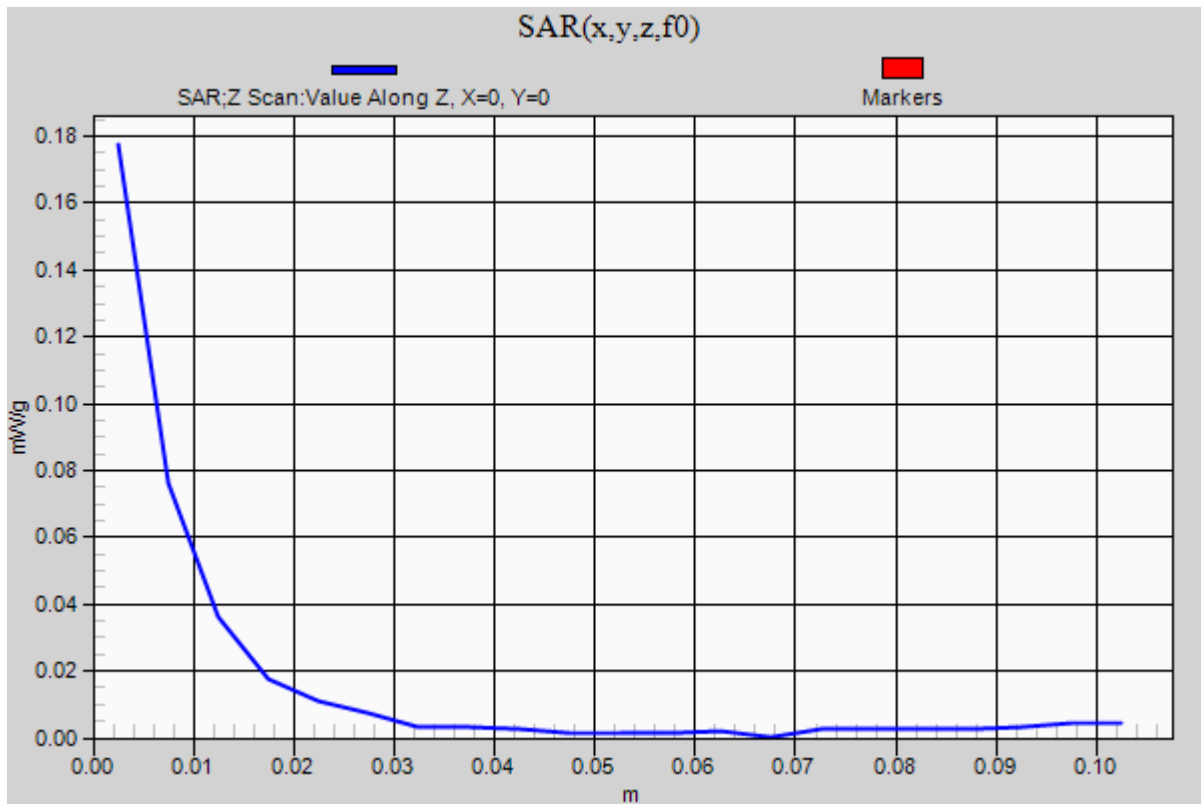
TD-CDMA 2.6GHz Band_Body_Primary Portrait

Communication System: TD-CDMA; Frequency: 2593 MHz;Duty Cycle: 1:3.0

64QAM_BW-10MHz_Mid-Ch/Z Scan (1x1x21): Measurement grid: dx=20mm, dy=20mm, dz=5mm

Info: [Interpolated medium parameters used for SAR evaluation.](#)

Maximum value of SAR (measured) = 0.177 mW/g



Test Laboratory: UL CCS SAR Lab C

TD-CDMA 2.6GHz Band_Body_Primary Portrait

Communication System: TD-CDMA; Frequency: 2593 MHz; Duty Cycle: 1:3.0

Medium parameters used (interpolated): $f = 2593$ MHz; $\sigma = 2.087$ mho/m; $\epsilon_r = 52.988$; $\rho = 1000$ kg/m³

Phantom section: Flat Section

Room Ambient Temperature: 24.0 deg. C; Liquid Temperature: 23.0 deg. C

DASY5 Configuration:

- Area Scan setting - Find Secondary Maximum Within: 2.0 dB and with a peak SAR value greater than 0.0012W/kg
- Probe: EX3DV4 - SN3772; ConvF(6.3, 6.3, 6.3); Calibrated: 5/3/2011
- Sensor-Surface: 2.5mm (Mechanical Surface Detection (Locations From Previous Scan Used)), Sensor-Surface: 2.5mm (Mechanical Surface Detection)
- Electronics: DAE4 Sn1239; Calibrated: 10/18/2011
- Phantom: ELI v4.0 (B); Type: QDOVA001BB; Serial: 1121
- Measurement SW: DASY52, Version 52.6 (2); SEMCAD X Version 14.4.5 (3634)

QPSK_BW-5MHz_Mid-Ch/Area Scan (81x101x1): Measurement grid: dx=15mm, dy=15mm

Info: [Interpolated medium parameters used for SAR evaluation.](#)

Maximum value of SAR (interpolated) = 0.207 mW/g

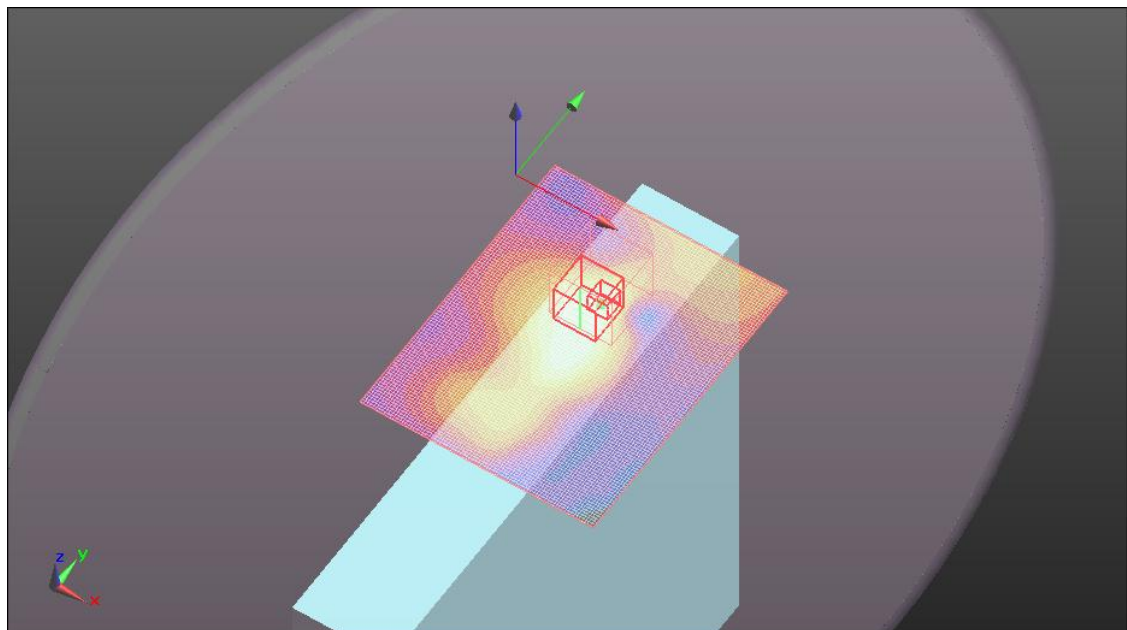
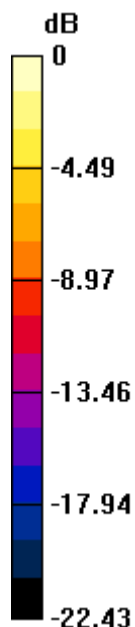
QPSK_BW-5MHz_Mid-Ch/Zoom Scan (5x5x7)/Cube 0: Measurement grid: dx=8mm, dy=8mm, dz=5mm

Reference Value = 8.558 V/m; Power Drift = 0.04 dB

Peak SAR (extrapolated) = 0.253 W/kg

SAR(1 g) = 0.114 mW/g; SAR(10 g) = 0.060 mW/gInfo: [Interpolated medium parameters used for SAR evaluation.](#)

Maximum value of SAR (measured) = 0.160 mW/g



0 dB = 0.160mW/g

Test Laboratory: UL CCS SAR Lab C

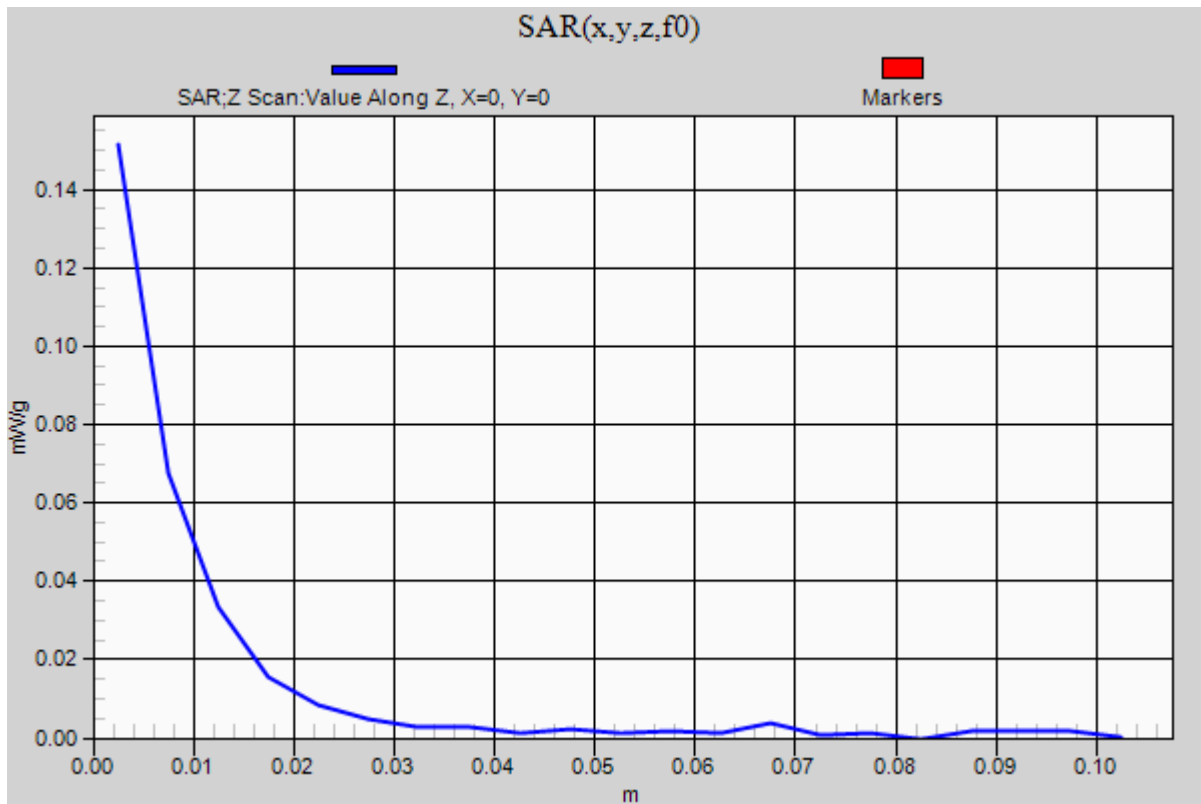
TD-CDMA 2.6GHz Band_Body_Primary Portrait

Communication System: TD-CDMA; Frequency: 2593 MHz;Duty Cycle: 1:3.0

QPSK_BW-5MHz_Mid-Ch/Z Scan (1x1x21): Measurement grid: dx=20mm, dy=20mm, dz=5mm

Info: [Interpolated medium parameters used for SAR evaluation.](#)

Maximum value of SAR (measured) = 0.151 mW/g



Test Laboratory: UL CCS SAR Lab C

TD-CDMA 2.6GHz Band_Body_Primary Portrait

Communication System: TD-CDMA; Frequency: 2593 MHz; Duty Cycle: 1:3.0

Medium parameters used (interpolated): $f = 2593$ MHz; $\sigma = 2.087$ mho/m; $\epsilon_r = 52.988$; $\rho = 1000$ kg/m³

Phantom section: Flat Section

Room Ambient Temperature: 24.0 deg. C; Liquid Temperature: 23.0 deg. C

DASY5 Configuration:

- Area Scan setting - Find Secondary Maximum Within: 2.0 dB and with a peak SAR value greater than 0.0012W/kg
- Probe: EX3DV4 - SN3772; ConvF(6.3, 6.3, 6.3); Calibrated: 5/3/2011
- Sensor-Surface: 2.5mm (Mechanical Surface Detection (Locations From Previous Scan Used)), Sensor-Surface: 2.5mm (Mechanical Surface Detection)
- Electronics: DAE4 Sn1239; Calibrated: 10/18/2011
- Phantom: ELI v4.0 (B); Type: QDOVA001BB; Serial: 1121
- Measurement SW: DASY52, Version 52.6 (2); SEMCAD X Version 14.4.5 (3634)

16QAM_BW-5MHz_Mid-Ch/Area Scan (81x101x1): Measurement grid: dx=15mm, dy=15mm

Info: [Interpolated medium parameters used for SAR evaluation.](#)

Maximum value of SAR (interpolated) = 0.223 mW/g

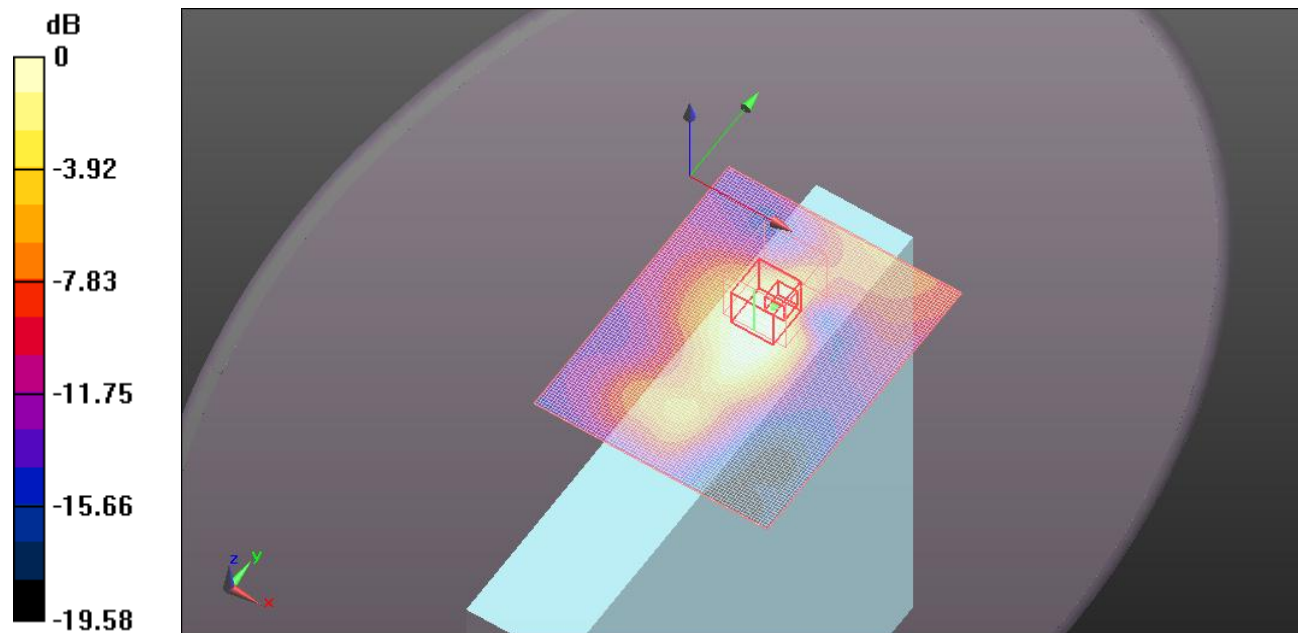
16QAM_BW-5MHz_Mid-Ch/Zoom Scan (5x5x7)/Cube 0: Measurement grid: dx=8mm, dy=8mm, dz=5mm

Reference Value = 9.408 V/m; Power Drift = -0.0099 dB

Peak SAR (extrapolated) = 0.304 W/kg

SAR(1 g) = 0.123 mW/g; SAR(10 g) = 0.064 mW/gInfo: [Interpolated medium parameters used for SAR evaluation.](#)

Maximum value of SAR (measured) = 0.164 mW/g



0 dB = 0.160mW/g

Test Laboratory: UL CCS SAR Lab C

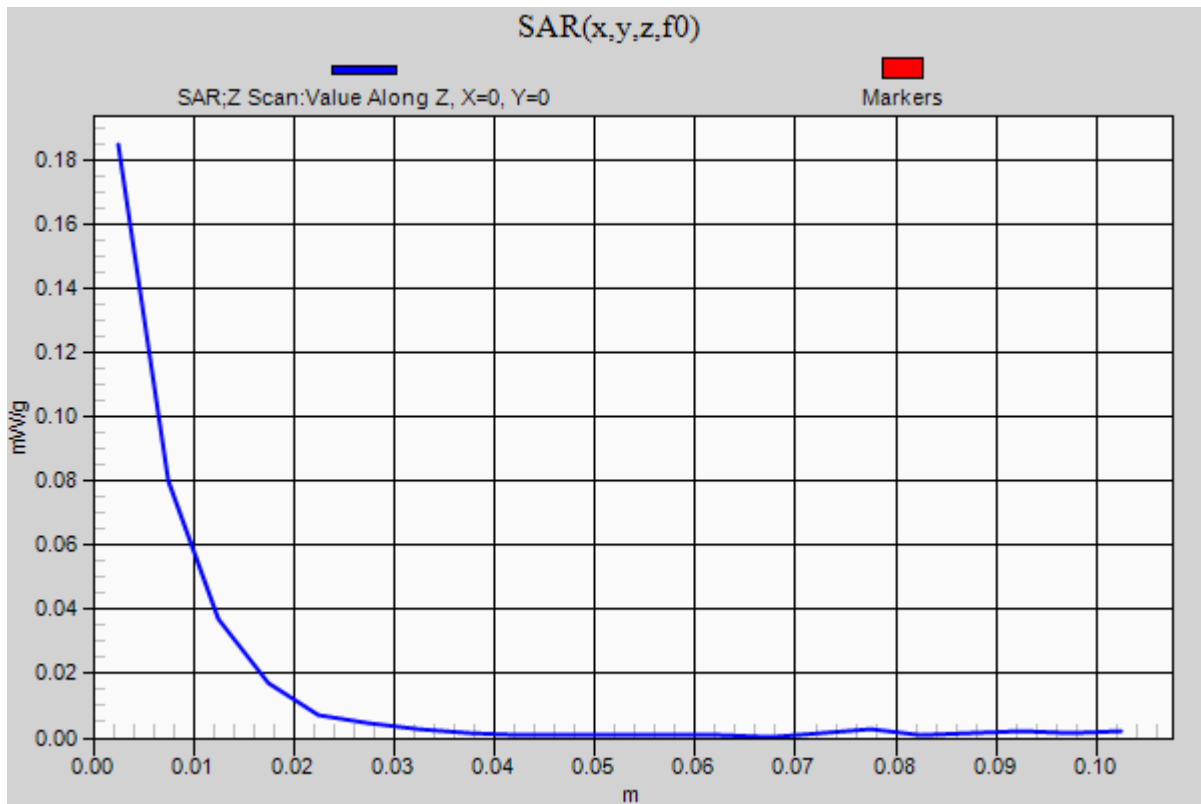
TD-CDMA 2.6GHz Band_Body_Primary Portrait

Communication System: TD-CDMA; Frequency: 2593 MHz;Duty Cycle: 1:3.0

16QAM_BW-5MHz_Mid-Ch/Z Scan (1x1x21): Measurement grid: dx=20mm, dy=20mm, dz=5mm

Info: [Interpolated medium parameters used for SAR evaluation.](#)

Maximum value of SAR (measured) = 0.185 mW/g



Test Laboratory: UL CCS SAR Lab C

TD-CDMA 2.6GHz Band_Body_Primary Portrait

Communication System: TD-CDMA; Frequency: 2593 MHz; Duty Cycle: 1:3.0

Medium parameters used (interpolated): $f = 2593$ MHz; $\sigma = 2.087$ mho/m; $\epsilon_r = 52.988$; $\rho = 1000$ kg/m³

Phantom section: Flat Section

Room Ambient Temperature: 24.0 deg. C; Liquid Temperature: 23.0 deg. C

DASY5 Configuration:

- Area Scan setting - Find Secondary Maximum Within: 2.0 dB and with a peak SAR value greater than 0.0012W/kg
- Probe: EX3DV4 - SN3772; ConvF(6.3, 6.3, 6.3); Calibrated: 5/3/2011
- Sensor-Surface: 2.5mm (Mechanical Surface Detection (Locations From Previous Scan Used)), Sensor-Surface: 2.5mm (Mechanical Surface Detection)
- Electronics: DAE4 Sn1239; Calibrated: 10/18/2011
- Phantom: ELI v4.0 (B); Type: QDOVA001BB; Serial: 1121
- Measurement SW: DASY52, Version 52.6 (2); SEMCAD X Version 14.4.5 (3634)

64QAM_BW-5MHz_Mid-Ch/Area Scan (81x101x1): Measurement grid: dx=15mm, dy=15mm

Info: [Interpolated medium parameters used for SAR evaluation.](#)

Maximum value of SAR (interpolated) = 0.237 mW/g

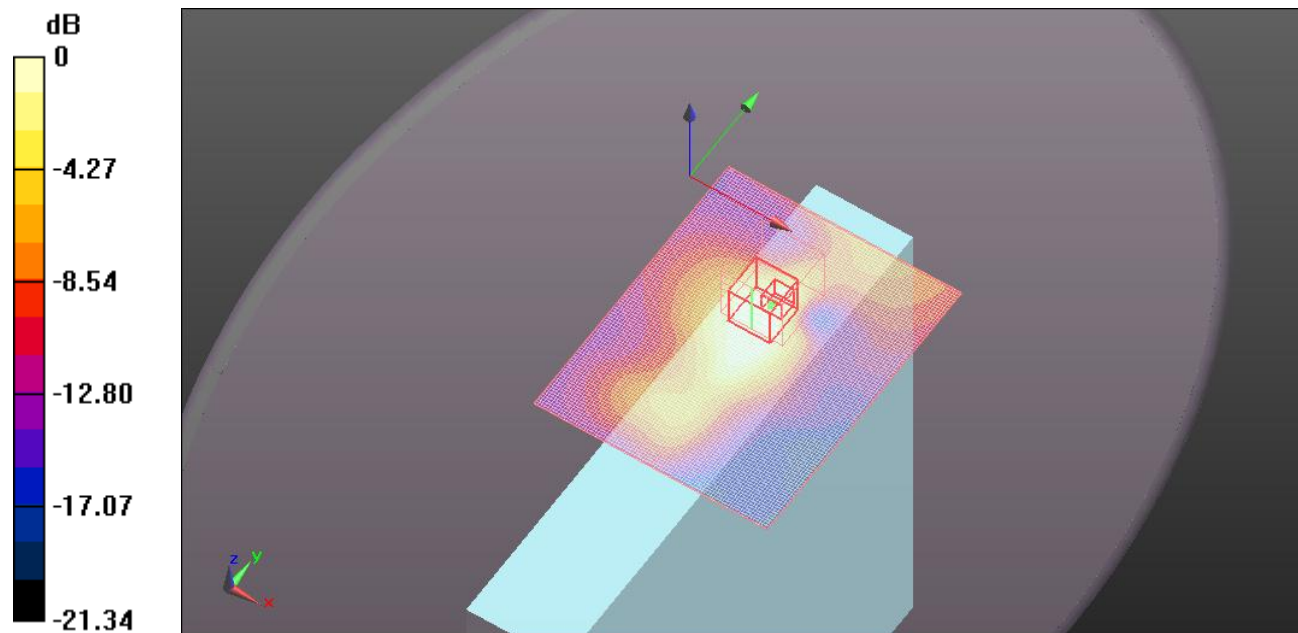
64QAM_BW-5MHz_Mid-Ch/Zoom Scan (5x5x7)/Cube 0: Measurement grid: dx=8mm, dy=8mm, dz=5mm

Reference Value = 9.376 V/m; Power Drift = 0.0013 dB

Peak SAR (extrapolated) = 0.304 W/kg

SAR(1 g) = 0.125 mW/g; SAR(10 g) = 0.066 mW/gInfo: [Interpolated medium parameters used for SAR evaluation.](#)

Maximum value of SAR (measured) = 0.165 mW/g



0 dB = 0.160mW/g

Test Laboratory: UL CCS SAR Lab C

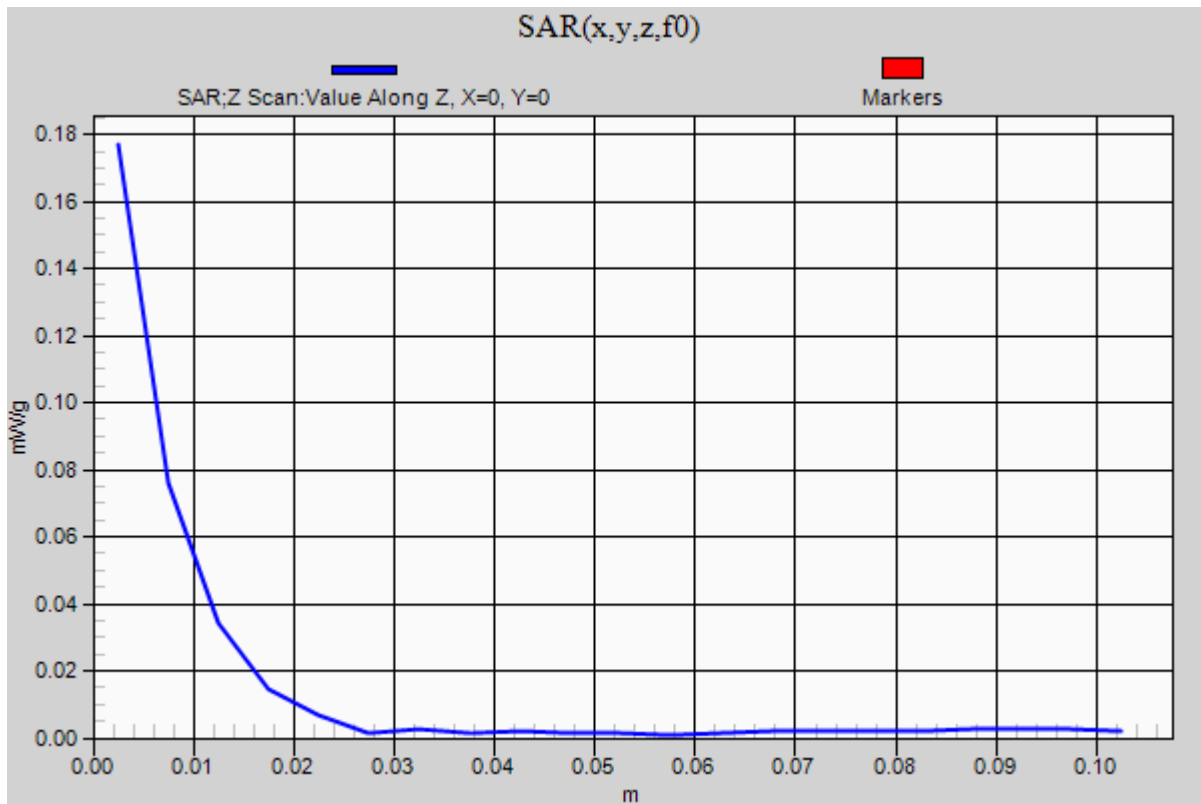
TD-CDMA 2.6GHz Band_Body_Primary Portrait

Communication System: TD-CDMA; Frequency: 2593 MHz;Duty Cycle: 1:3.0

64QAM_BW-5MHz_Mid-Ch/Z Scan (1x1x21): Measurement grid: dx=20mm, dy=20mm, dz=5mm

Info: [Interpolated medium parameters used for SAR evaluation.](#)

Maximum value of SAR (measured) = 0.177 mW/g



Test Laboratory: UL CCS SAR Lab C

TD-CDMA 2.6GHz Band_Body_Secondary Landscape

Communication System: TD-CDMA; Frequency: 2593 MHz; Duty Cycle: 1:3.0

Medium parameters used (interpolated): $f = 2593$ MHz; $\sigma = 2.149$ mho/m; $\epsilon_r = 52.414$; $\rho = 1000$ kg/m³

Phantom section: Flat Section

Room Ambient Temperature: 24.0 deg. C; Liquid Temperature: 23.0 deg. C

DASY5 Configuration:

- Area Scan setting - Find Secondary Maximum Within: 2.0 dB and with a peak SAR value greater than 0.0012W/kg
- Probe: EX3DV4 - SN3772; ConvF(6.3, 6.3, 6.3); Calibrated: 5/3/2011
- Sensor-Surface: 2.5mm (Mechanical Surface Detection)
- Electronics: DAE4 Sn1239; Calibrated: 10/18/2011
- Phantom: ELI v4.0 (B); Type: QDOVA001BB; Serial: 1121
- Measurement SW: DASY52, Version 52.6 (2); SEMCAD X Version 14.4.5 (3634)

QPSK_BW-10MHz_Mid-Ch/Area Scan (81x161x1): Measurement grid: dx=15mm, dy=15mm

Info: [Interpolated medium parameters used for SAR evaluation.](#)

Maximum value of SAR (interpolated) = 0.131 mW/g

QPSK_BW-10MHz_Mid-Ch/Zoom Scan (5x5x7)/Cube 0: Measurement grid: dx=8mm, dy=8mm, dz=5mm

Reference Value = 7.677 V/m; Power Drift = -0.08 dB

Peak SAR (extrapolated) = 0.177 W/kg

SAR(1 g) = 0.097 mW/g; SAR(10 g) = 0.056 mW/gInfo: [Interpolated medium parameters used for SAR evaluation.](#)

Maximum value of SAR (measured) = 0.125 mW/g

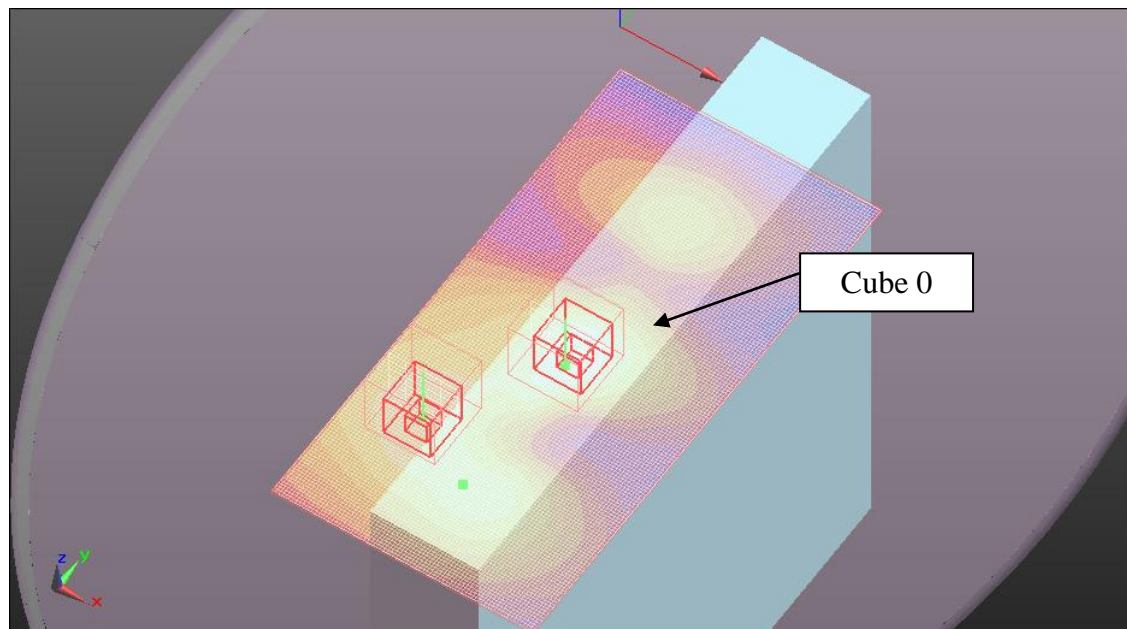
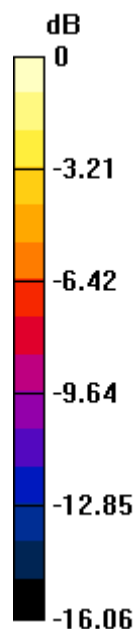
QPSK_BW-10MHz_Mid-Ch/Zoom Scan (5x5x7)/Cube 1: Measurement grid: dx=8mm, dy=8mm, dz=5mm

Reference Value = 7.677 V/m; Power Drift = -0.08 dB

Peak SAR (extrapolated) = 0.140 W/kg

SAR(1 g) = 0.077 mW/g; SAR(10 g) = 0.046 mW/gInfo: [Interpolated medium parameters used for SAR evaluation.](#)

Maximum value of SAR (measured) = 0.098 mW/g



0 dB = 0.130mW/g

Test Laboratory: UL CCS SAR Lab C

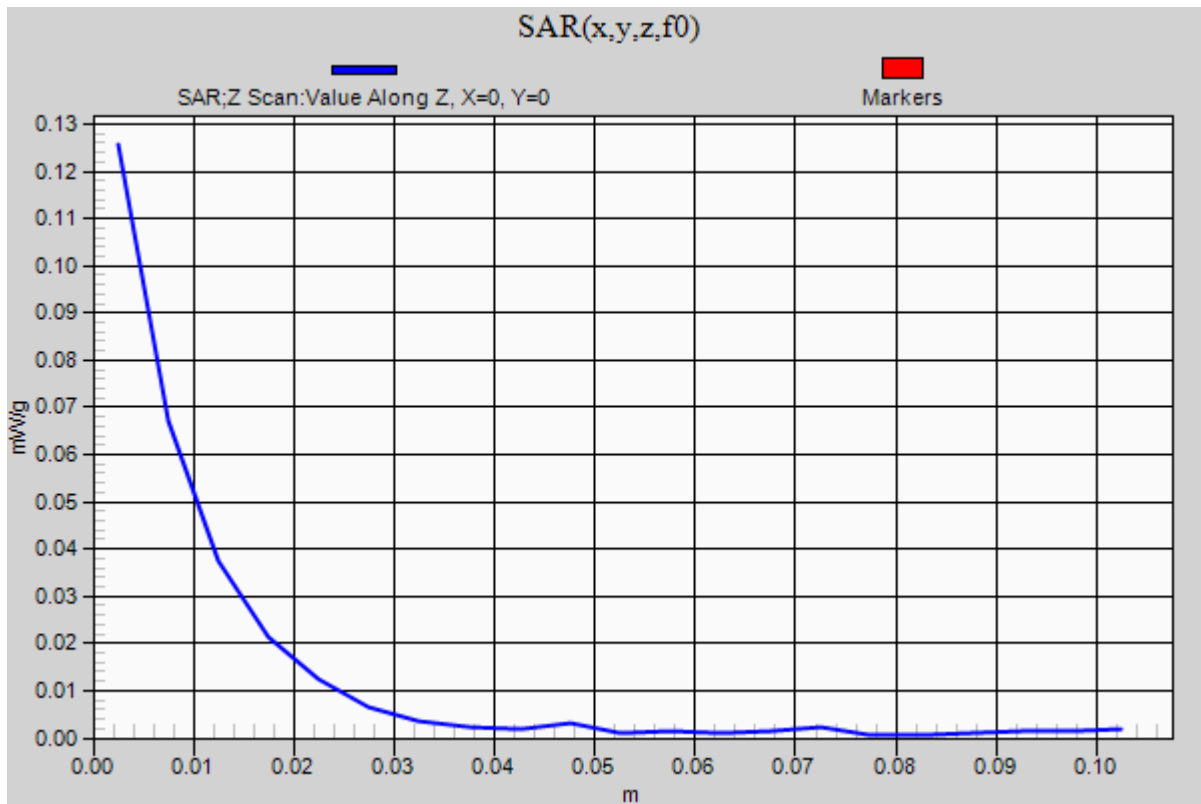
TD-CDMA 2.6GHz Band_Body_Secondary Landscape

Communication System: TD-CDMA; Frequency: 2593 MHz;Duty Cycle: 1:3.0

QPSK_BW-10MHz_Mid-Ch/Z Scan (1x1x21): Measurement grid: dx=20mm, dy=20mm, dz=5mm

Info: [Interpolated medium parameters used for SAR evaluation.](#)

Maximum value of SAR (measured) = 0.126 mW/g



Test Laboratory: UL CCS SAR Lab C

TD-CDMA 2.6GHz Band_Body_Secondary Landscape

Communication System: TD-CDMA; Frequency: 2593 MHz; Duty Cycle: 1:3.0

Medium parameters used (interpolated): $f = 2593$ MHz; $\sigma = 2.149$ mho/m; $\epsilon_r = 52.414$; $\rho = 1000$ kg/m³

Phantom section: Flat Section

Room Ambient Temperature: 24.0 deg. C; Liquid Temperature: 23.0 deg. C

DASY5 Configuration:

- Area Scan setting - Find Secondary Maximum Within: 2.0 dB and with a peak SAR value greater than 0.0012W/kg
- Probe: EX3DV4 - SN3772; ConvF(6.3, 6.3, 6.3); Calibrated: 5/3/2011
- Sensor-Surface: 2.5mm (Mechanical Surface Detection)
- Electronics: DAE4 Sn1239; Calibrated: 10/18/2011
- Phantom: ELI v4.0 (B); Type: QDOVA001BB; Serial: 1121
- Measurement SW: DASY52, Version 52.6 (2); SEMCAD X Version 14.4.5 (3634)

16QAM_BW-10MHz_Mid-Ch/Area Scan (81x161x1): Measurement grid: dx=15mm, dy=15mm

Info: [Interpolated medium parameters used for SAR evaluation.](#)

Maximum value of SAR (interpolated) = 0.128 mW/g

16QAM_BW-10MHz_Mid-Ch/Zoom Scan (5x5x7)/Cube 0: Measurement grid: dx=8mm, dy=8mm, dz=5mm

Reference Value = 7.663 V/m; Power Drift = -0.06 dB

Peak SAR (extrapolated) = 0.176 W/kg

SAR(1 g) = 0.097 mW/g; SAR(10 g) = 0.056 mW/gInfo: [Interpolated medium parameters used for SAR evaluation.](#)

Maximum value of SAR (measured) = 0.126 mW/g

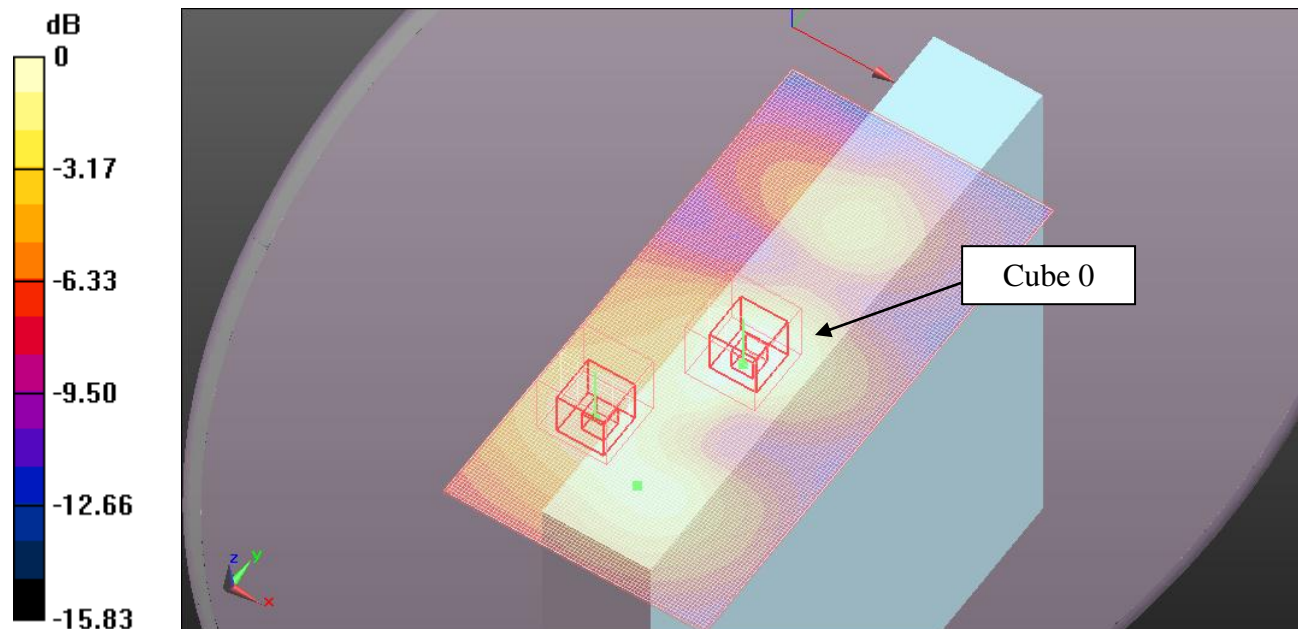
16QAM_BW-10MHz_Mid-Ch/Zoom Scan (5x5x7)/Cube 1: Measurement grid: dx=8mm, dy=8mm, dz=5mm

Reference Value = 7.663 V/m; Power Drift = -0.06 dB

Peak SAR (extrapolated) = 0.141 W/kg

SAR(1 g) = 0.076 mW/g; SAR(10 g) = 0.045 mW/gInfo: [Interpolated medium parameters used for SAR evaluation.](#)

Maximum value of SAR (measured) = 0.098 mW/g



0 dB = 0.130mW/g

Test Laboratory: UL CCS SAR Lab C

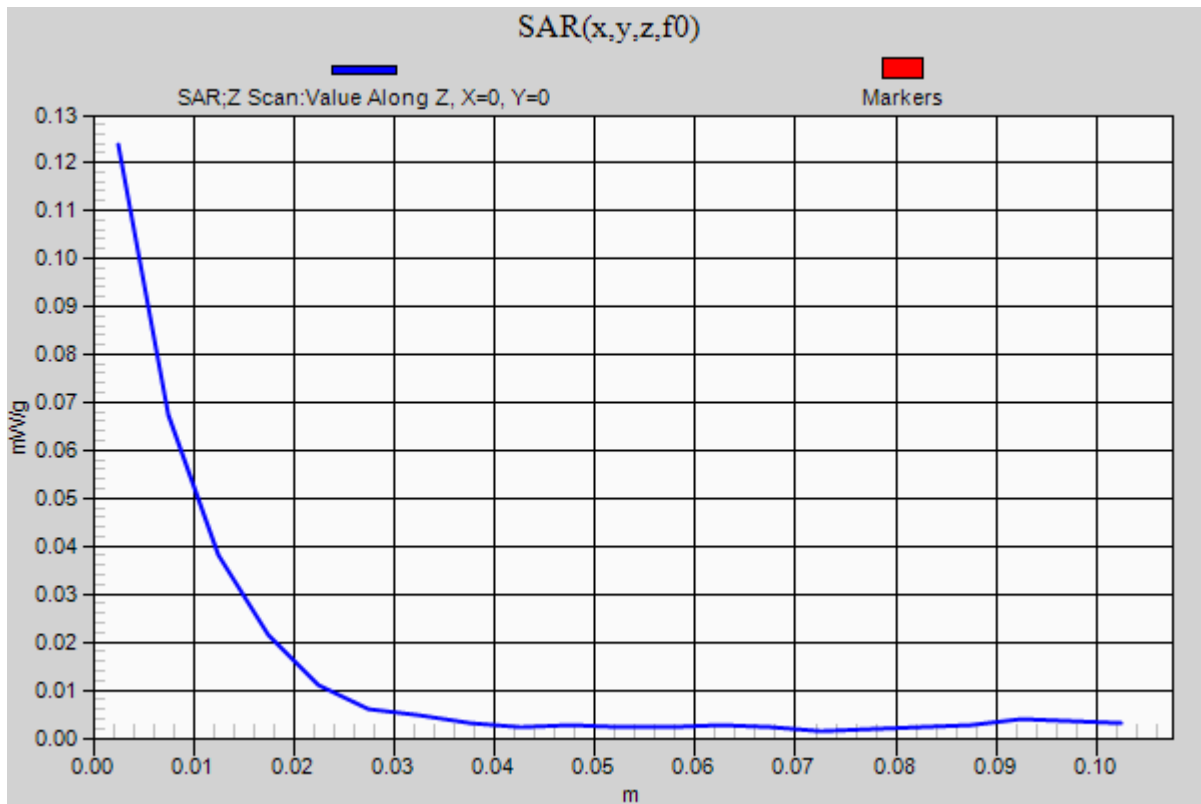
TD-CDMA 2.6GHz Band_Body_Secondary Landscape

Communication System: TD-CDMA; Frequency: 2593 MHz;Duty Cycle: 1:3.0

16QAM_BW-10MHz_Mid-Ch/Z Scan (1x1x21): Measurement grid: dx=20mm, dy=20mm, dz=5mm

Info: [Interpolated medium parameters used for SAR evaluation.](#)

Maximum value of SAR (measured) = 0.124 mW/g



Test Laboratory: UL CCS SAR Lab C

TD-CDMA 2.6GHz Band_Body_Secondary Landscape

Communication System: TD-CDMA; Frequency: 2593 MHz; Duty Cycle: 1:3.0

Medium parameters used (interpolated): $f = 2593$ MHz; $\sigma = 2.149$ mho/m; $\epsilon_r = 52.414$; $\rho = 1000$ kg/m³

Phantom section: Flat Section

Room Ambient Temperature: 24.0 deg. C; Liquid Temperature: 23.0 deg. C

DASY5 Configuration:

- Area Scan setting - Find Secondary Maximum Within: 2.0 dB and with a peak SAR value greater than 0.0012W/kg
- Probe: EX3DV4 - SN3772; ConvF(6.3, 6.3, 6.3); Calibrated: 5/3/2011
- Sensor-Surface: 2.5mm (Mechanical Surface Detection)
- Electronics: DAE4 Sn1239; Calibrated: 10/18/2011
- Phantom: ELI v4.0 (B); Type: QDOVA001BB; Serial: 1121
- Measurement SW: DASY52, Version 52.6 (2); SEMCAD X Version 14.4.5 (3634)

64QAM_BW-10MHz_Mid-Ch/Area Scan (81x161x1): Measurement grid: dx=15mm, dy=15mm

Info: [Interpolated medium parameters used for SAR evaluation.](#)

Maximum value of SAR (interpolated) = 0.127 mW/g

64QAM_BW-10MHz_Mid-Ch/Zoom Scan (5x5x7)/Cube 0: Measurement grid: dx=8mm, dy=8mm, dz=5mm

Reference Value = 7.540 V/m; Power Drift = -0.10 dB

Peak SAR (extrapolated) = 0.176 W/kg

SAR(1 g) = 0.097 mW/g; SAR(10 g) = 0.056 mW/gInfo: [Interpolated medium parameters used for SAR evaluation.](#)

Maximum value of SAR (measured) = 0.126 mW/g

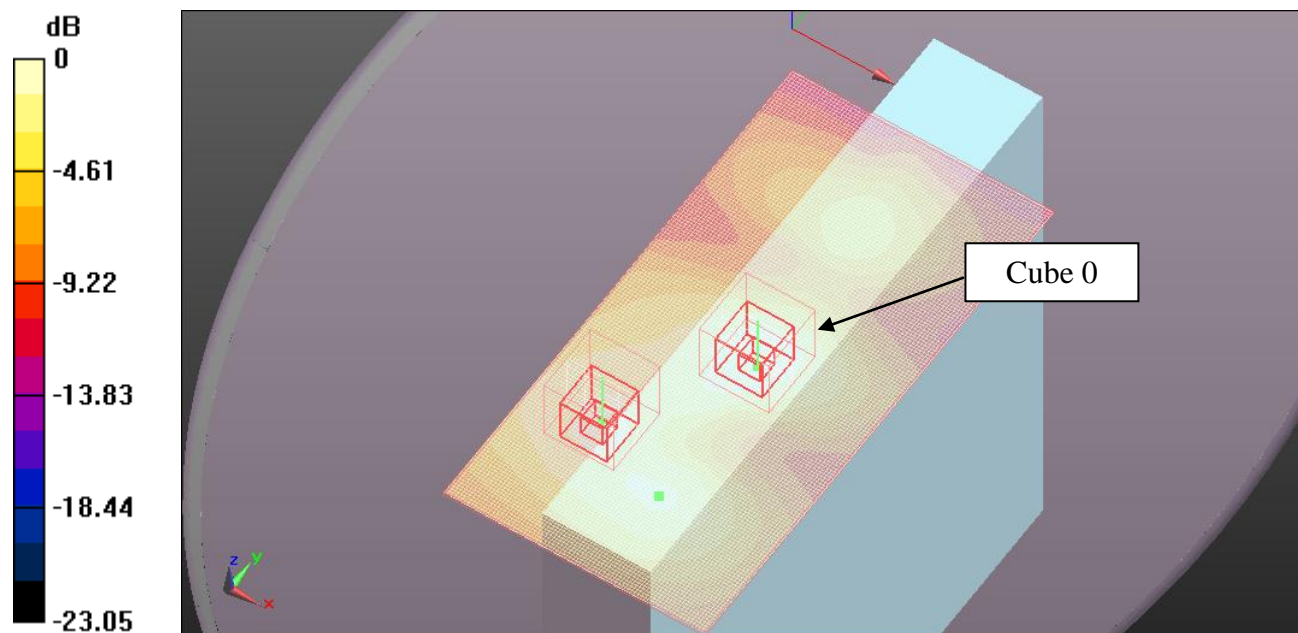
64QAM_BW-10MHz_Mid-Ch/Zoom Scan (5x5x7)/Cube 1: Measurement grid: dx=8mm, dy=8mm, dz=5mm

Reference Value = 7.540 V/m; Power Drift = -0.10 dB

Peak SAR (extrapolated) = 0.144 W/kg

SAR(1 g) = 0.079 mW/g; SAR(10 g) = 0.046 mW/gInfo: [Interpolated medium parameters used for SAR evaluation.](#)

Maximum value of SAR (measured) = 0.101 mW/g



0 dB = 0.130mW/g

Test Laboratory: UL CCS SAR Lab C

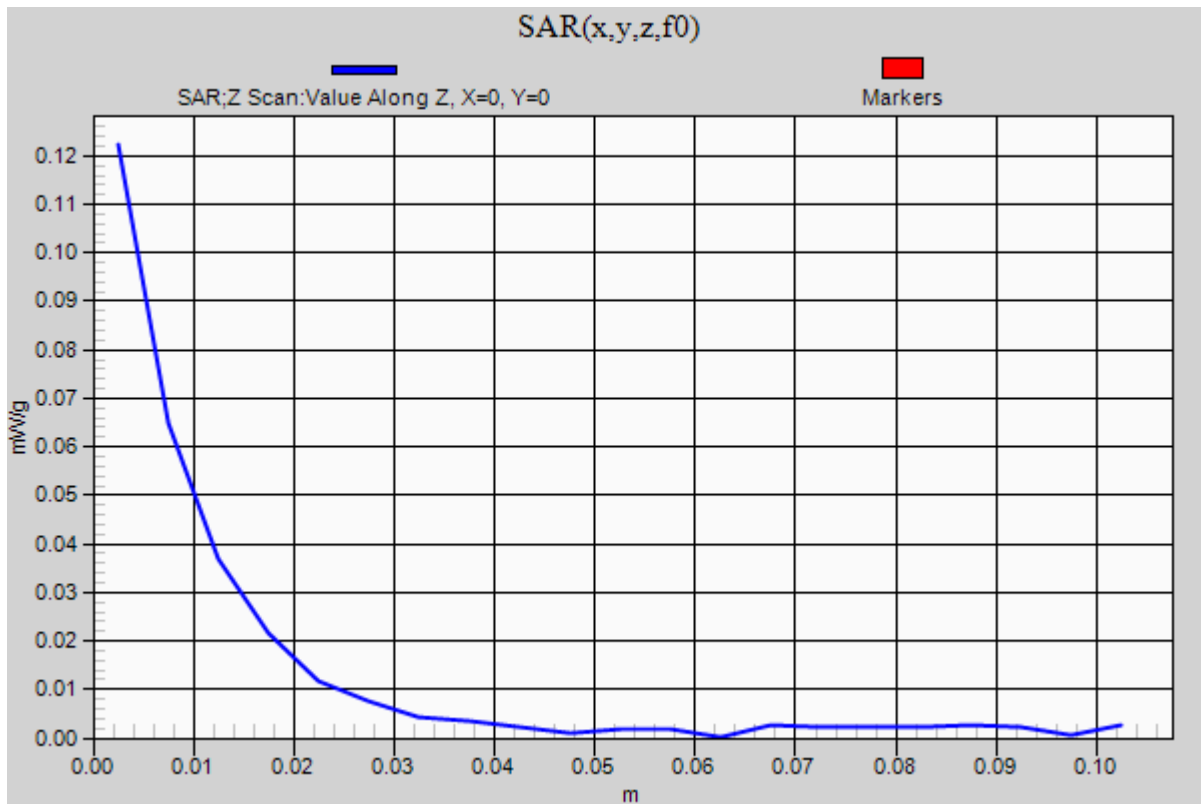
TD-CDMA 2.6GHz Band_Body_Secondary Landscape

Communication System: TD-CDMA; Frequency: 2593 MHz;Duty Cycle: 1:3.0

64QAM_BW-10MHz_Mid-Ch/Z Scan (1x1x21): Measurement grid: dx=20mm, dy=20mm, dz=5mm

Info: [Interpolated medium parameters used for SAR evaluation.](#)

Maximum value of SAR (measured) = 0.122 mW/g



Test Laboratory: UL CCS SAR Lab C

TD-CDMA 2.6GHz Band_Body_Secondary Landscape

Communication System: TD-CDMA; Frequency: 2593 MHz; Duty Cycle: 1:3.0

Medium parameters used (interpolated): $f = 2593$ MHz; $\sigma = 2.149$ mho/m; $\epsilon_r = 52.414$; $\rho = 1000$ kg/m³

Phantom section: Flat Section

Room Ambient Temperature: 24.0 deg. C; Liquid Temperature: 23.0 deg. C

DASY5 Configuration:

- Area Scan setting - Find Secondary Maximum Within: 2.0 dB and with a peak SAR value greater than 0.0012W/kg
- Probe: EX3DV4 - SN3772; ConvF(6.3, 6.3, 6.3); Calibrated: 5/3/2011
- Sensor-Surface: 2.5mm (Mechanical Surface Detection (Locations From Previous Scan Used)), Sensor-Surface: 2.5mm (Mechanical Surface Detection)
- Electronics: DAE4 Sn1239; Calibrated: 10/18/2011
- Phantom: ELI v4.0 (B); Type: QDOVA001BB; Serial: 1121
- Measurement SW: DASY52, Version 52.6 (2); SEMCAD X Version 14.4.5 (3634)

QPSK_BW-5MHz_Mid-Ch/Area Scan (81x161x1): Measurement grid: dx=15mm, dy=15mm

[Info: Interpolated medium parameters used for SAR evaluation.](#)

Maximum value of SAR (interpolated) = 0.140 mW/g

QPSK_BW-5MHz_Mid-Ch/Zoom Scan (5x5x7)/Cube 0: Measurement grid: dx=8mm, dy=8mm, dz=5mm

Reference Value = 7.722 V/m; Power Drift = -0.01 dB

Peak SAR (extrapolated) = 0.181 W/kg

SAR(1 g) = 0.101 mW/g; SAR(10 g) = 0.057 mW/g

[Info: Interpolated medium parameters used for SAR evaluation.](#)

Maximum value of SAR (measured) = 0.132 mW/g

QPSK_BW-5MHz_Mid-Ch/Zoom Scan (5x5x7)/Cube 1: Measurement grid: dx=8mm, dy=8mm, dz=5mm

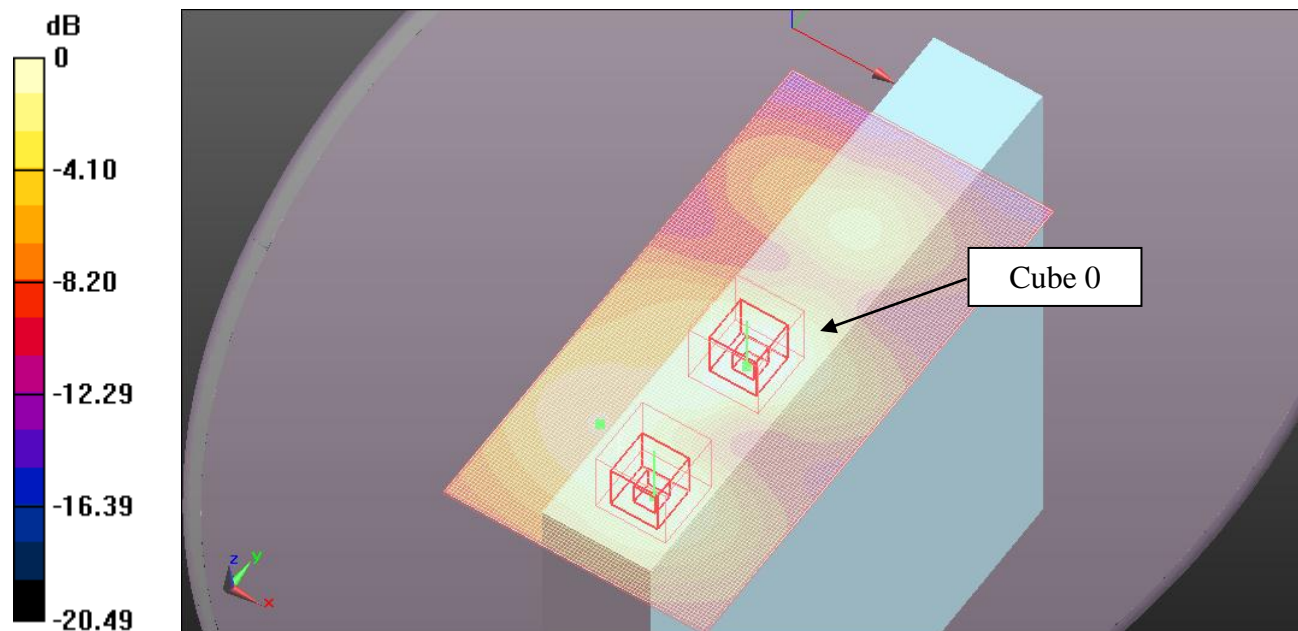
Reference Value = 7.722 V/m; Power Drift = -0.01 dB

Peak SAR (extrapolated) = 0.172 W/kg

SAR(1 g) = 0.085 mW/g; SAR(10 g) = 0.048 mW/g

[Info: Interpolated medium parameters used for SAR evaluation.](#)

Maximum value of SAR (measured) = 0.110 mW/g



0 dB = 0.140mW/g

Test Laboratory: UL CCS SAR Lab C

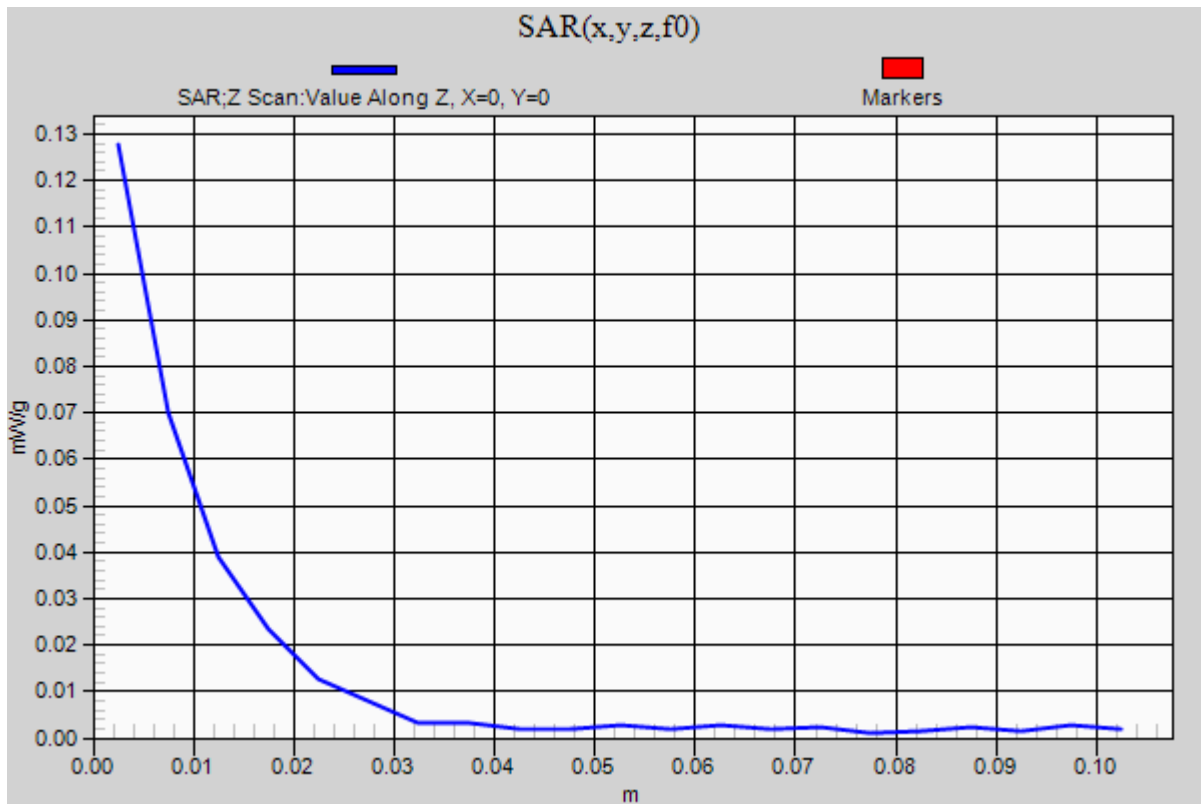
TD-CDMA 2.6GHz Band_Body_Secondary Landscape

Communication System: TD-CDMA; Frequency: 2593 MHz;Duty Cycle: 1:3.0

QPSK_BW-5MHz_Mid-Ch/Z Scan (1x1x21): Measurement grid: dx=20mm, dy=20mm, dz=5mm

Info: [Interpolated medium parameters used for SAR evaluation.](#)

Maximum value of SAR (measured) = 0.128 mW/g



Test Laboratory: UL CCS SAR Lab C

TD-CDMA 2.6GHz Band_Body_Secondary Landscape

Communication System: TD-CDMA; Frequency: 2593 MHz; Duty Cycle: 1:3.0

Medium parameters used (interpolated): $f = 2593$ MHz; $\sigma = 2.149$ mho/m; $\epsilon_r = 52.414$; $\rho = 1000$ kg/m³

Phantom section: Flat Section

Room Ambient Temperature: 24.0 deg. C; Liquid Temperature: 23.0 deg. C

DASY5 Configuration:

- Area Scan setting - Find Secondary Maximum Within: 2.0 dB and with a peak SAR value greater than 0.0012W/kg
- Probe: EX3DV4 - SN3772; ConvF(6.3, 6.3, 6.3); Calibrated: 5/3/2011
- Sensor-Surface: 2.5mm (Mechanical Surface Detection (Locations From Previous Scan Used)), Sensor-Surface: 2.5mm (Mechanical Surface Detection)
- Electronics: DAE4 Sn1239; Calibrated: 10/18/2011
- Phantom: ELI v4.0 (B); Type: QDOVA001BB; Serial: 1121
- Measurement SW: DASY52, Version 52.6 (2); SEMCAD X Version 14.4.5 (3634)

16QAM_BW-5MHz_Mid-Ch/Area Scan (81x161x1): Measurement grid: dx=15mm, dy=15mm

Info: [Interpolated medium parameters used for SAR evaluation.](#)

Maximum value of SAR (interpolated) = 0.136 mW/g

16QAM_BW-5MHz_Mid-Ch/Zoom Scan (5x5x7)/Cube 0: Measurement grid: dx=8mm, dy=8mm, dz=5mm

Reference Value = 7.654 V/m; Power Drift = -0.07 dB

Peak SAR (extrapolated) = 0.176 W/kg

SAR(1 g) = 0.099 mW/g; SAR(10 g) = 0.057 mW/gInfo: [Interpolated medium parameters used for SAR evaluation.](#)

Maximum value of SAR (measured) = 0.128 mW/g

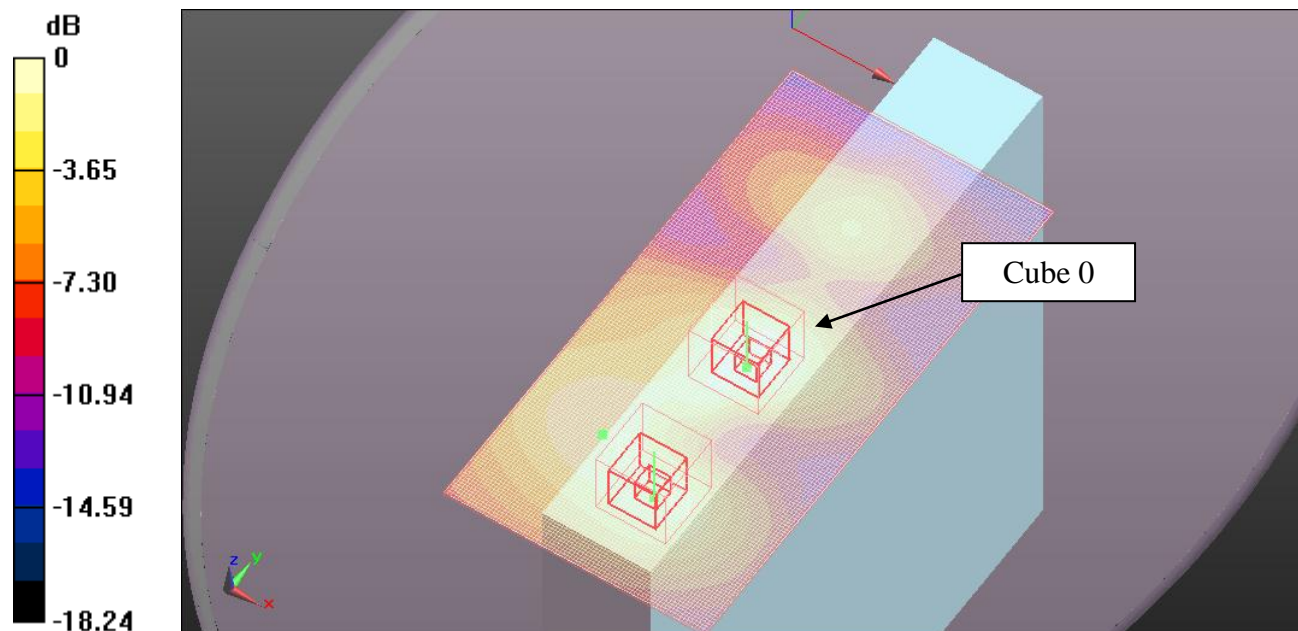
16QAM_BW-5MHz_Mid-Ch/Zoom Scan (5x5x7)/Cube 1: Measurement grid: dx=8mm, dy=8mm, dz=5mm

Reference Value = 7.654 V/m; Power Drift = -0.07 dB

Peak SAR (extrapolated) = 0.145 W/kg

SAR(1 g) = 0.080 mW/g; SAR(10 g) = 0.046 mW/gInfo: [Interpolated medium parameters used for SAR evaluation.](#)

Maximum value of SAR (measured) = 0.102 mW/g



0 dB = 0.140mW/g

Test Laboratory: UL CCS SAR Lab C

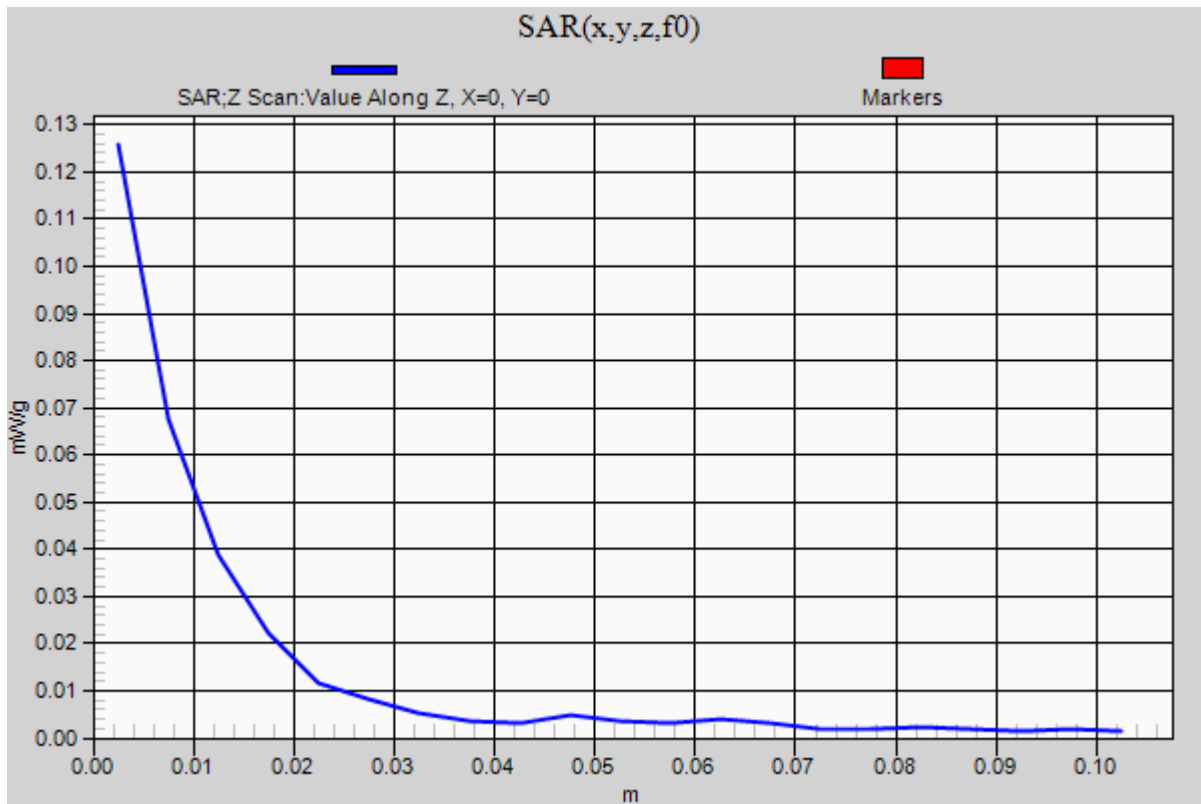
TD-CDMA 2.6GHz Band_Body_Secondary Landscape

Communication System: TD-CDMA; Frequency: 2593 MHz;Duty Cycle: 1:3.0

16QAM_BW-5MHz_Mid-Ch/Z Scan (1x1x21): Measurement grid: dx=20mm, dy=20mm, dz=5mm

Info: [Interpolated medium parameters used for SAR evaluation.](#)

Maximum value of SAR (measured) = 0.126 mW/g



Test Laboratory: UL CCS SAR Lab C

TD-CDMA 2.6GHz Band_Body_Secondary Landscape

Communication System: TD-CDMA; Frequency: 2593 MHz; Duty Cycle: 1:3.0

Medium parameters used (interpolated): $f = 2593$ MHz; $\sigma = 2.149$ mho/m; $\epsilon_r = 52.414$; $\rho = 1000$ kg/m³

Phantom section: Flat Section

Room Ambient Temperature: 24.0 deg. C; Liquid Temperature: 23.0 deg. C

DASY5 Configuration:

- Area Scan setting - Find Secondary Maximum Within: 2.0 dB and with a peak SAR value greater than 0.0012W/kg
- Probe: EX3DV4 - SN3772; ConvF(6.3, 6.3, 6.3); Calibrated: 5/3/2011
- Sensor-Surface: 2.5mm (Mechanical Surface Detection (Locations From Previous Scan Used)), Sensor-Surface: 2.5mm (Mechanical Surface Detection)
- Electronics: DAE4 Sn1239; Calibrated: 10/18/2011
- Phantom: ELI v4.0 (B); Type: QDOVA001BB; Serial: 1121
- Measurement SW: DASY52, Version 52.6 (2); SEMCAD X Version 14.4.5 (3634)

64QAM_BW-5MHz_Mid-Ch/Area Scan (81x161x1): Measurement grid: dx=15mm, dy=15mm

Info: [Interpolated medium parameters used for SAR evaluation.](#)

Maximum value of SAR (interpolated) = 0.132 mW/g

64QAM_BW-5MHz_Mid-Ch/Zoom Scan (5x5x7)/Cube 0: Measurement grid: dx=8mm, dy=8mm, dz=5mm

Reference Value = 7.720 V/m; Power Drift = 0.05 dB

Peak SAR (extrapolated) = 0.179 W/kg

SAR(1 g) = 0.099 mW/g; SAR(10 g) = 0.057 mW/gInfo: [Interpolated medium parameters used for SAR evaluation.](#)

Maximum value of SAR (measured) = 0.128 mW/g

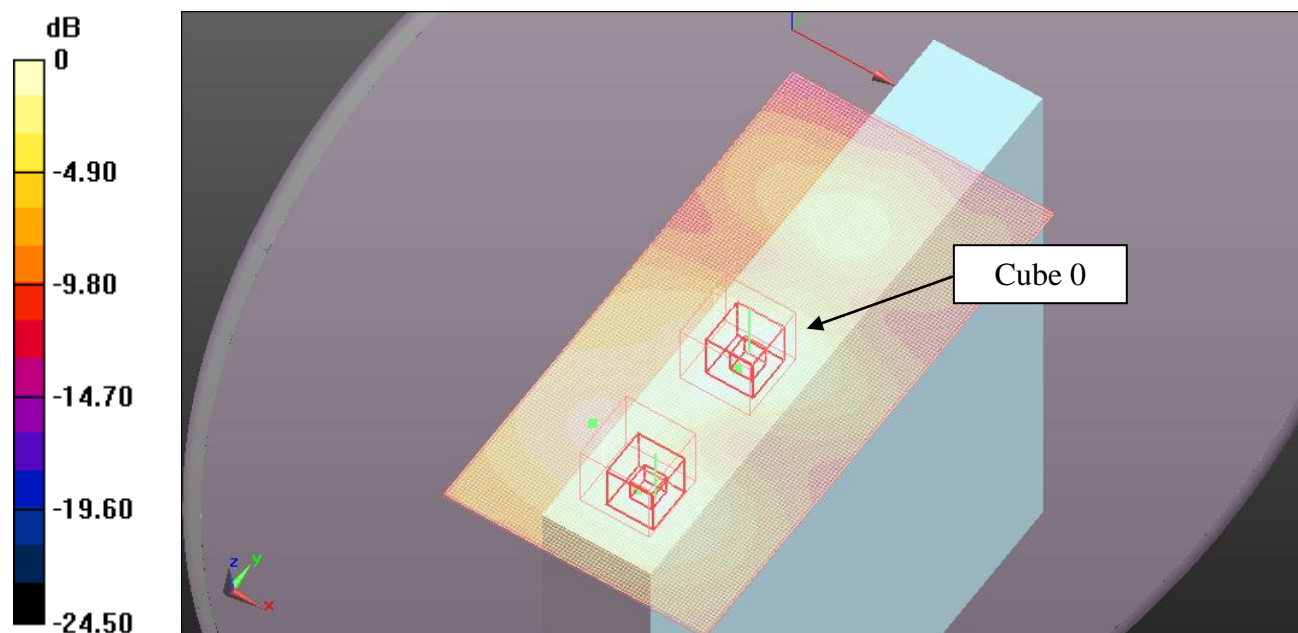
64QAM_BW-5MHz_Mid-Ch/Zoom Scan (5x5x7)/Cube 1: Measurement grid: dx=8mm, dy=8mm, dz=5mm

Reference Value = 7.720 V/m; Power Drift = 0.05 dB

Peak SAR (extrapolated) = 0.138 W/kg

SAR(1 g) = 0.077 mW/g; SAR(10 g) = 0.045 mW/gInfo: [Interpolated medium parameters used for SAR evaluation.](#)

Maximum value of SAR (measured) = 0.097 mW/g



0 dB = 0.130mW/g

Test Laboratory: UL CCS SAR Lab C

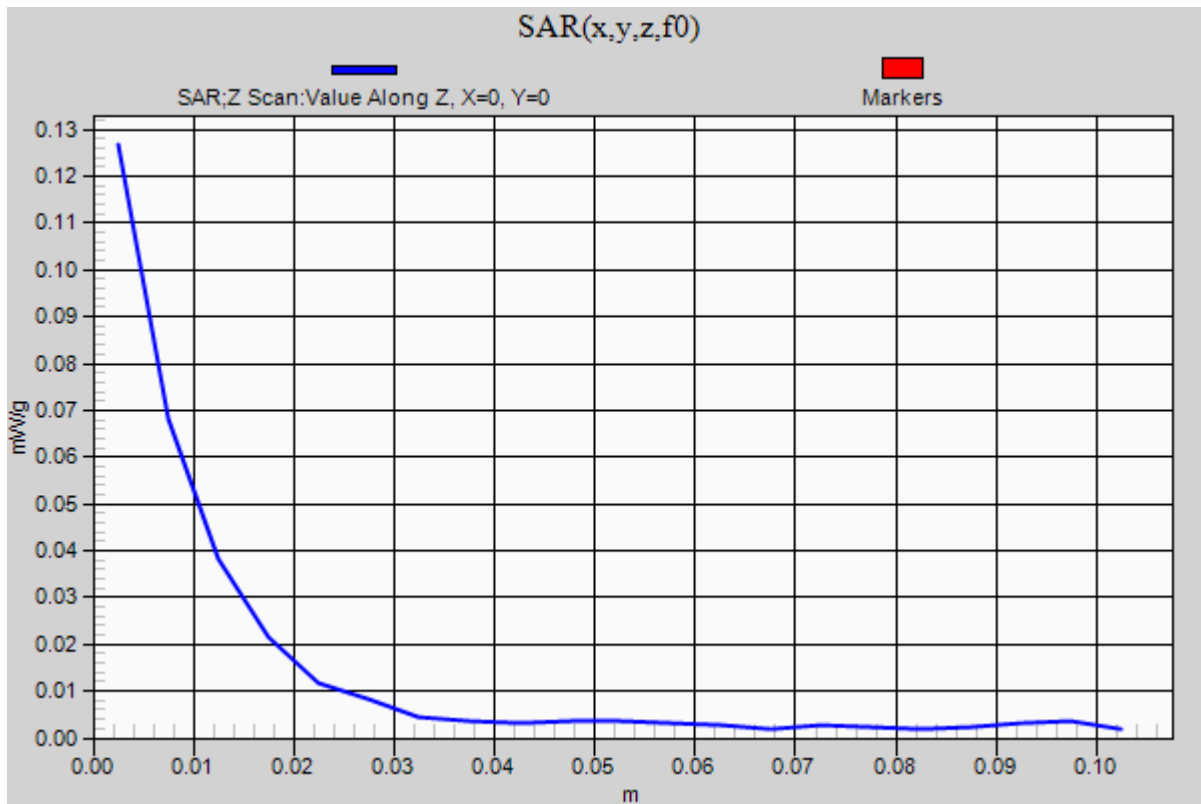
TD-CDMA 2.6GHz Band_Body_Secondary Landscape

Communication System: TD-CDMA; Frequency: 2593 MHz;Duty Cycle: 1:3.0

64QAM_BW-5MHz_Mid-Ch/Z Scan (1x1x21): Measurement grid: dx=20mm, dy=20mm, dz=5mm

Info: [Interpolated medium parameters used for SAR evaluation.](#)

Maximum value of SAR (measured) = 0.127 mW/g



Test Laboratory: UL CCS SAR Lab C

TD-CDMA 2.6GHz Band_Body_Bottom/Base

Communication System: TD-CDMA; Frequency: 2593 MHz; Duty Cycle: 1:3.0

Medium parameters used (interpolated): $f = 2593$ MHz; $\sigma = 2.149$ mho/m; $\epsilon_r = 52.414$; $\rho = 1000$ kg/m³

Phantom section: Flat Section

Room Ambient Temperature: 24.0 deg. C; Liquid Temperature: 23.0 deg. C

DASY5 Configuration:

- Area Scan setting - Find Secondary Maximum Within: 2.0 dB and with a peak SAR value greater than 0.0012W/kg
- Probe: EX3DV4 - SN3772; ConvF(6.3, 6.3, 6.3); Calibrated: 5/3/2011
- Sensor-Surface: 2.5mm (Mechanical Surface Detection)
- Electronics: DAE4 Sn1239; Calibrated: 10/18/2011
- Phantom: ELI v4.0 (B); Type: QDOVA001BB; Serial: 1121
- Measurement SW: DASY52, Version 52.6 (2); SEMCAD X Version 14.4.5 (3634)

QPSK_BW-10MHz_Mid-Ch/Area Scan (141x201x1): Measurement grid: dx=15mm, dy=15mm[Info: Interpolated medium parameters used for SAR evaluation.](#)

Maximum value of SAR (interpolated) = 0.046 mW/g

QPSK_BW-10MHz_Mid-Ch/Zoom Scan (5x5x7)/Cube 0: Measurement grid: dx=8mm, dy=8mm, dz=5mm

Reference Value = 4.589 V/m; Power Drift = -0.0048 dB, Peak SAR (extrapolated) = 0.064 W/kg

SAR(1 g) = 0.036 mW/g; SAR(10 g) = 0.022 mW/g[Info: Interpolated medium parameters used for SAR evaluation.](#)

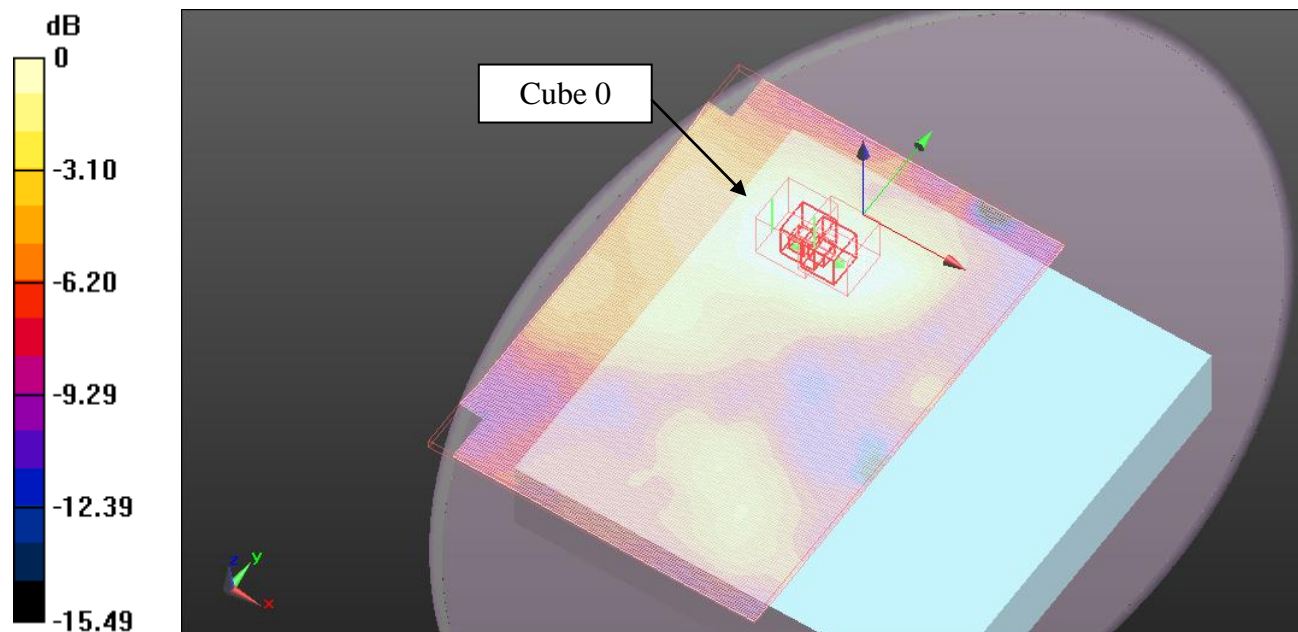
Maximum value of SAR (measured) = 0.047 mW/g

QPSK_BW-10MHz_Mid-Ch/Zoom Scan (5x5x7)/Cube 1: Measurement grid: dx=8mm, dy=8mm, dz=5mm

Reference Value = 4.589 V/m; Power Drift = -0.0048 dB, Peak SAR (extrapolated) = 0.064 W/kg

SAR(1 g) = 0.034 mW/g; SAR(10 g) = 0.021 mW/g[Info: Interpolated medium parameters used for SAR evaluation.](#)

Maximum value of SAR (measured) = 0.044 mW/g



0 dB = 0.040mW/g

Test Laboratory: UL CCS SAR Lab C

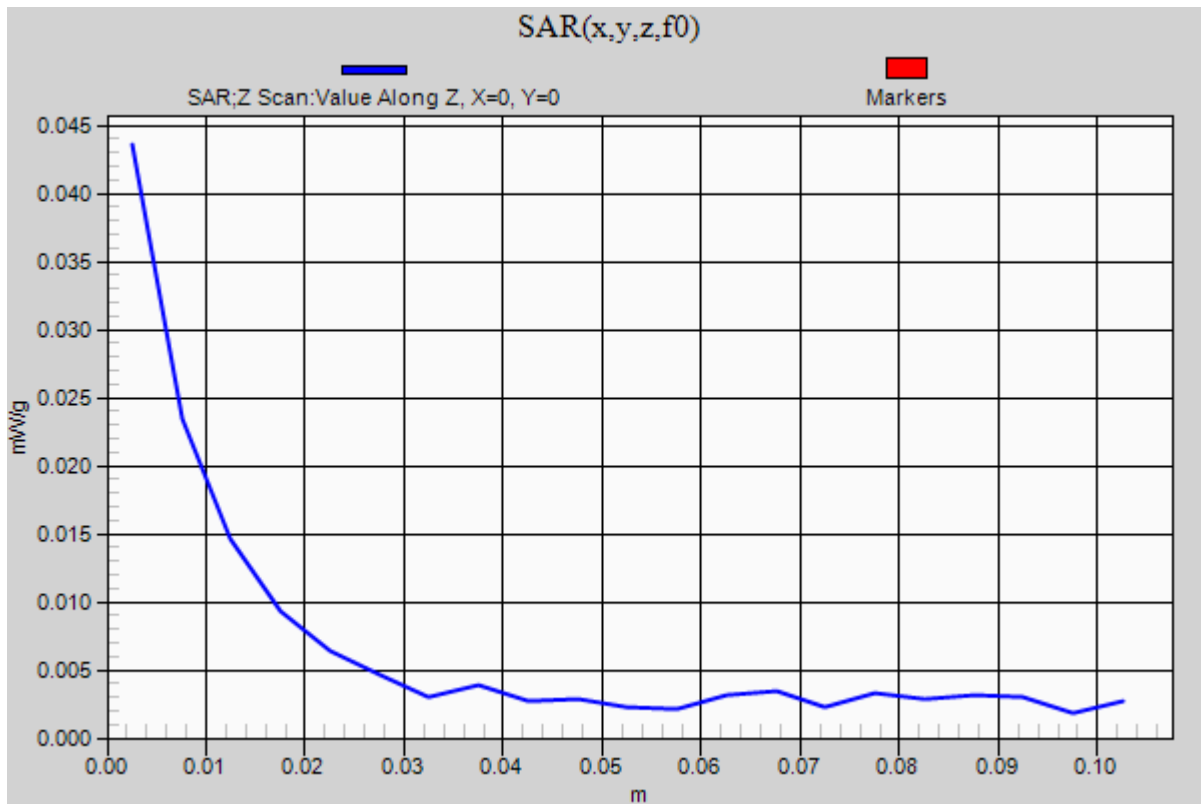
TD-CDMA 2.6GHz Band_Body_Bottom/Base

Communication System: TD-CDMA; Frequency: 2593 MHz;Duty Cycle: 1:3.0

QPSK_BW-10MHz_Mid-Ch/Z Scan (1x1x21): Measurement grid: dx=20mm, dy=20mm, dz=5mm

Info: [Interpolated medium parameters used for SAR evaluation.](#)

Maximum value of SAR (measured) = 0.044 mW/g



Test Laboratory: UL CCS SAR Lab C

TD-CDMA 2.6GHz Band_Body_Bottom/Base

Communication System: TD-CDMA; Frequency: 2593 MHz; Duty Cycle: 1:3.0

Medium parameters used (interpolated): $f = 2593$ MHz; $\sigma = 2.149$ mho/m; $\epsilon_r = 52.414$; $\rho = 1000$ kg/m³

Phantom section: Flat Section

Room Ambient Temperature: 24.0 deg. C; Liquid Temperature: 23.0 deg. C

DASY5 Configuration:

- Area Scan setting - Find Secondary Maximum Within: 2.0 dB and with a peak SAR value greater than 0.0012W/kg
- Probe: EX3DV4 - SN3772; ConvF(6.3, 6.3, 6.3); Calibrated: 5/3/2011
- Sensor-Surface: 2.5mm (Mechanical Surface Detection (Locations From Previous Scan Used)), Sensor-Surface: 2.5mm (Mechanical Surface Detection)
- Electronics: DAE4 Sn1239; Calibrated: 10/18/2011
- Phantom: ELI v4.0 (B); Type: QDOVA001BB; Serial: 1121
- Measurement SW: DASY52, Version 52.6 (2); SEMCAD X Version 14.4.5 (3634)

16QAM_BW-10MHz_Mid-Ch/Area Scan (141x201x1): Measurement grid: dx=15mm, dy=15mm[Info: Interpolated medium parameters used for SAR evaluation.](#)

Maximum value of SAR (interpolated) = 0.042 mW/g

16QAM_BW-10MHz_Mid-Ch/Zoom Scan (5x5x7)/Cube 0: Measurement grid: dx=8mm, dy=8mm, dz=5mm

Reference Value = 4.516 V/m; Power Drift = -0.08 dB, Peak SAR (extrapolated) = 0.064 W/kg

SAR(1 g) = 0.034 mW/g; SAR(10 g) = 0.021 mW/g[Info: Interpolated medium parameters used for SAR evaluation.](#)

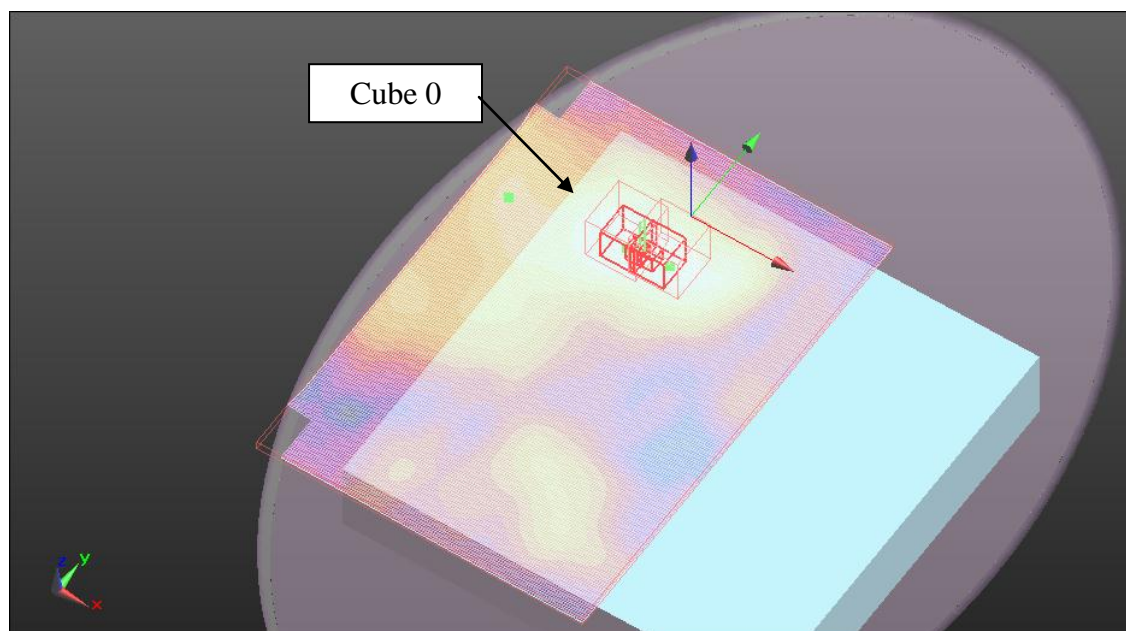
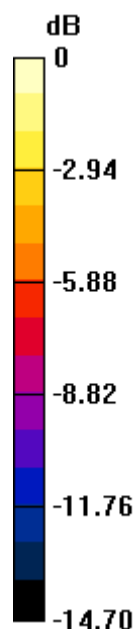
Maximum value of SAR (measured) = 0.043 mW/g

16QAM_BW-10MHz_Mid-Ch/Zoom Scan (5x5x7)/Cube 1: Measurement grid: dx=8mm, dy=8mm, dz=5mm

Reference Value = 4.516 V/m; Power Drift = -0.08 dB, Peak SAR (extrapolated) = 0.062 W/kg

SAR(1 g) = 0.033 mW/g; SAR(10 g) = 0.020 mW/g[Info: Interpolated medium parameters used for SAR evaluation.](#)

Maximum value of SAR (measured) = 0.044 mW/g



0 dB = 0.040mW/g

Test Laboratory: UL CCS SAR Lab C

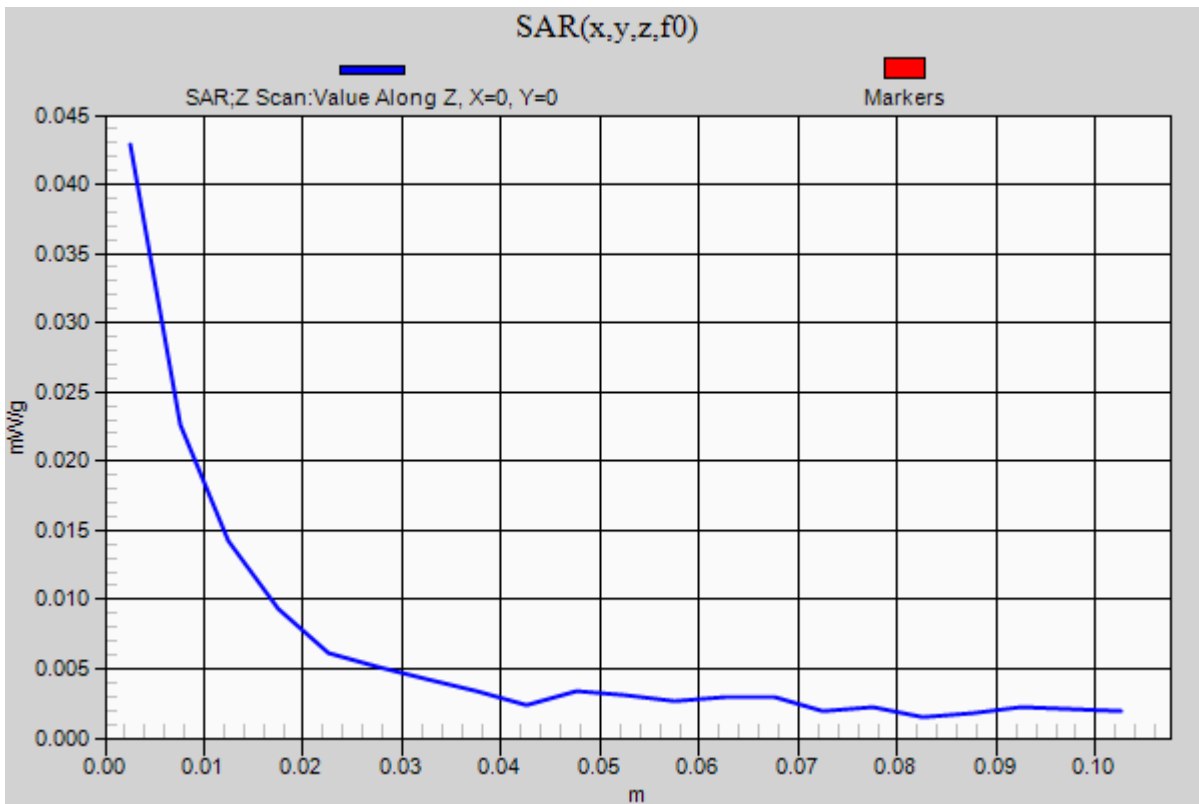
TD-CDMA 2.6GHz Band_Body_Bottom/Base

Communication System: TD-CDMA; Frequency: 2593 MHz;Duty Cycle: 1:3.0

16QAM_BW-10MHz_Mid-Ch/Z Scan (1x1x21): Measurement grid: dx=20mm, dy=20mm, dz=5mm

Info: [Interpolated medium parameters used for SAR evaluation.](#)

Maximum value of SAR (measured) = 0.043 mW/g



Test Laboratory: UL CCS SAR Lab C

TD-CDMA 2.6GHz Band_Body_Bottom/Base

Communication System: TD-CDMA; Frequency: 2593 MHz; Duty Cycle: 1:3.0

Medium parameters used (interpolated): $f = 2593$ MHz; $\sigma = 2.149$ mho/m; $\epsilon_r = 52.414$; $\rho = 1000$ kg/m³

Phantom section: Flat Section

Room Ambient Temperature: 24.0 deg. C; Liquid Temperature: 23.0 deg. C

DASY5 Configuration:

- Area Scan setting - Find Secondary Maximum Within: 2.0 dB and with a peak SAR value greater than 0.0012W/kg
- Probe: EX3DV4 - SN3772; ConvF(6.3, 6.3, 6.3); Calibrated: 5/3/2011
- Sensor-Surface: 2.5mm (Mechanical Surface Detection (Locations From Previous Scan Used)), Sensor-Surface: 2.5mm (Mechanical Surface Detection)
- Electronics: DAE4 Sn1239; Calibrated: 10/18/2011
- Phantom: ELI v4.0 (B); Type: QDOVA001BB; Serial: 1121
- Measurement SW: DASY52, Version 52.6 (2); SEMCAD X Version 14.4.5 (3634)

64QAM_BW-10MHz_Mid-Ch/Area Scan (141x201x1): Measurement grid: dx=15mm, dy=15mm[Info: Interpolated medium parameters used for SAR evaluation.](#)

Maximum value of SAR (interpolated) = 0.040 mW/g

64QAM_BW-10MHz_Mid-Ch/Zoom Scan (5x5x7)/Cube 0: Measurement grid: dx=8mm, dy=8mm, dz=5mm

Reference Value = 4.389 V/m; Power Drift = -0.06 dB, Peak SAR (extrapolated) = 0.062 W/kg

SAR(1 g) = 0.035 mW/g; SAR(10 g) = 0.021 mW/g[Info: Interpolated medium parameters used for SAR evaluation.](#)

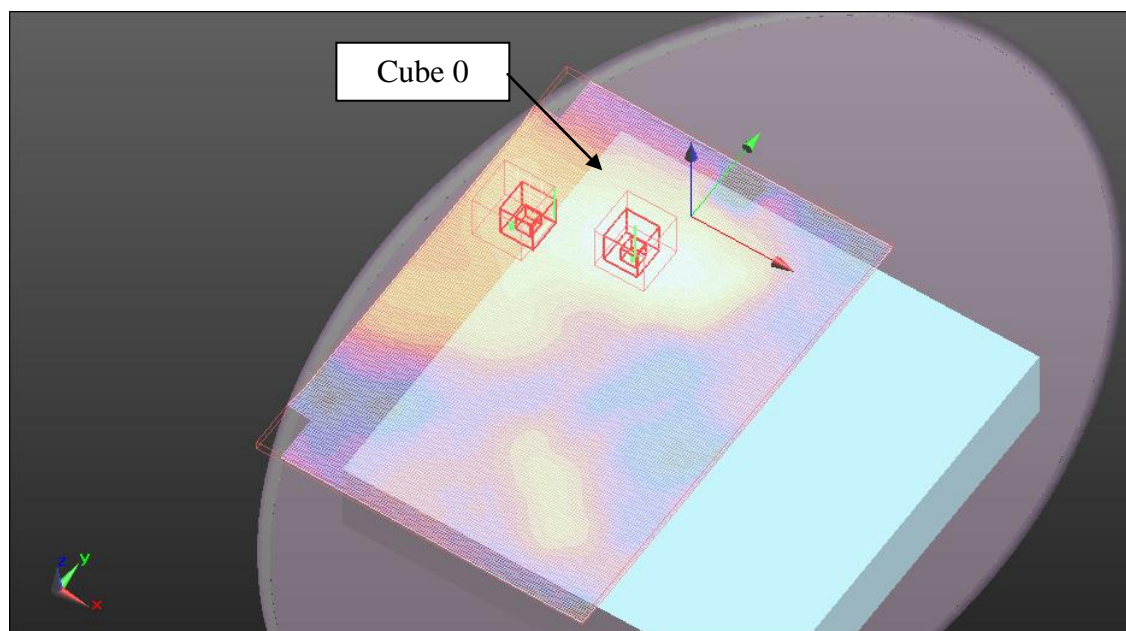
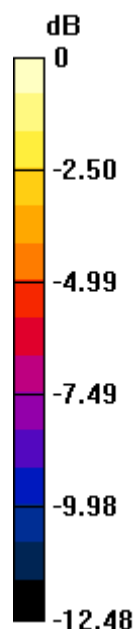
Maximum value of SAR (measured) = 0.045 mW/g

64QAM_BW-10MHz_Mid-Ch/Zoom Scan (5x5x7)/Cube 1: Measurement grid: dx=8mm, dy=8mm, dz=5mm

Reference Value = 4.389 V/m; Power Drift = -0.06 dB, Peak SAR (extrapolated) = 0.039 W/kg

SAR(1 g) = 0.022 mW/g; SAR(10 g) = 0.014 mW/g[Info: Interpolated medium parameters used for SAR evaluation.](#)

Maximum value of SAR (measured) = 0.029 mW/g



0 dB = 0.040mW/g

Test Laboratory: UL CCS SAR Lab C

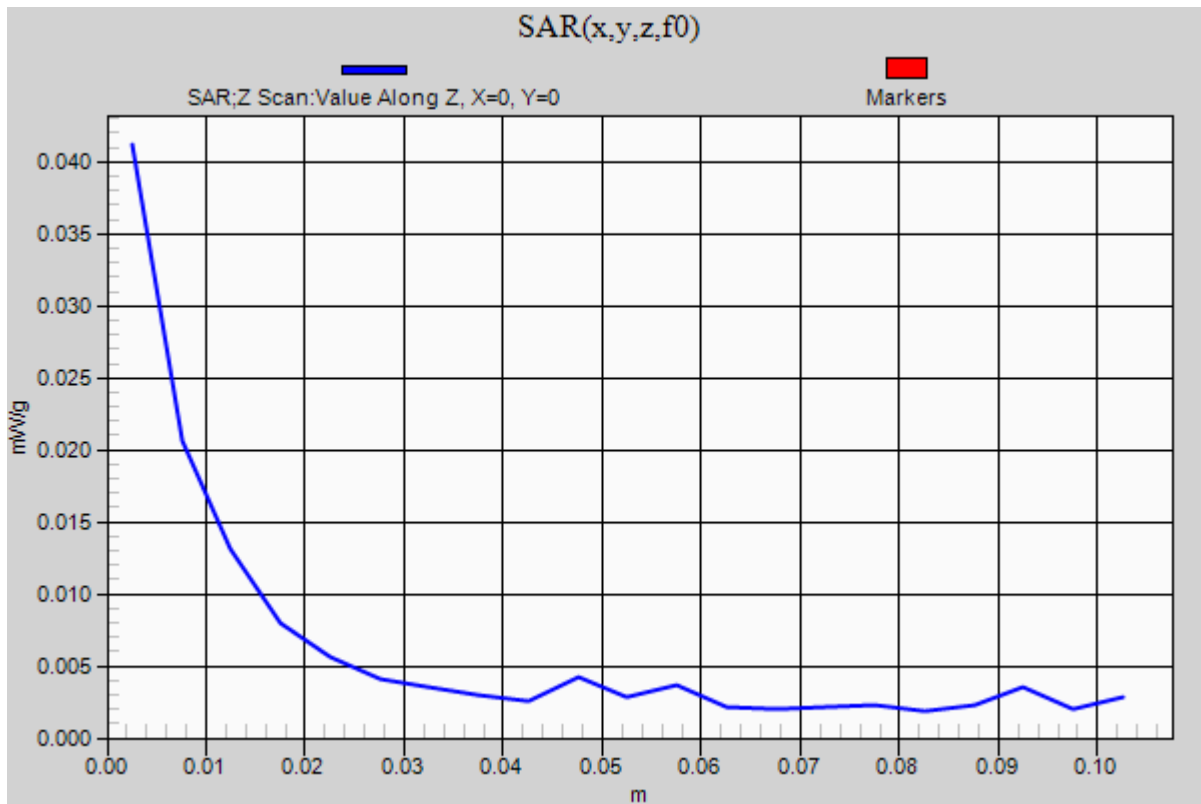
TD-CDMA 2.6GHz Band_Body_Bottom/Base

Communication System: TD-CDMA; Frequency: 2593 MHz;Duty Cycle: 1:3.0

64QAM_BW-10MHz_Mid-Ch/Z Scan (1x1x21): Measurement grid: dx=20mm, dy=20mm, dz=5mm

Info: [Interpolated medium parameters used for SAR evaluation.](#)

Maximum value of SAR (measured) = 0.041 mW/g



Test Laboratory: UL CCS SAR Lab C

TD-CDMA 2.6GHz Band_Body_Bottom/Base

Communication System: TD-CDMA; Frequency: 2593 MHz; Duty Cycle: 1:3.0

Medium parameters used (interpolated): $f = 2593$ MHz; $\sigma = 2.149$ mho/m; $\epsilon_r = 52.414$; $\rho = 1000$ kg/m³

Phantom section: Flat Section

Room Ambient Temperature: 24.0 deg. C; Liquid Temperature: 23.0 deg. C

DASY5 Configuration:

- Area Scan setting - Find Secondary Maximum Within: 2.0 dB and with a peak SAR value greater than 0.0012W/kg
- Probe: EX3DV4 - SN3772; ConvF(6.3, 6.3, 6.3); Calibrated: 5/3/2011
- Sensor-Surface: 2.5mm (Mechanical Surface Detection (Locations From Previous Scan Used)), Sensor-Surface: 2.5mm (Mechanical Surface Detection)
- Electronics: DAE4 Sn1239; Calibrated: 10/18/2011
- Phantom: ELI v4.0 (B); Type: QDOVA001BB; Serial: 1121
- Measurement SW: DASY52, Version 52.6 (2); SEMCAD X Version 14.4.5 (3634)

QPSK_BW-5MHz_Mid-Ch/Area Scan (141x201x1): Measurement grid: dx=15mm, dy=15mm[Info: Interpolated medium parameters used for SAR evaluation.](#)

Maximum value of SAR (interpolated) = 0.044 mW/g

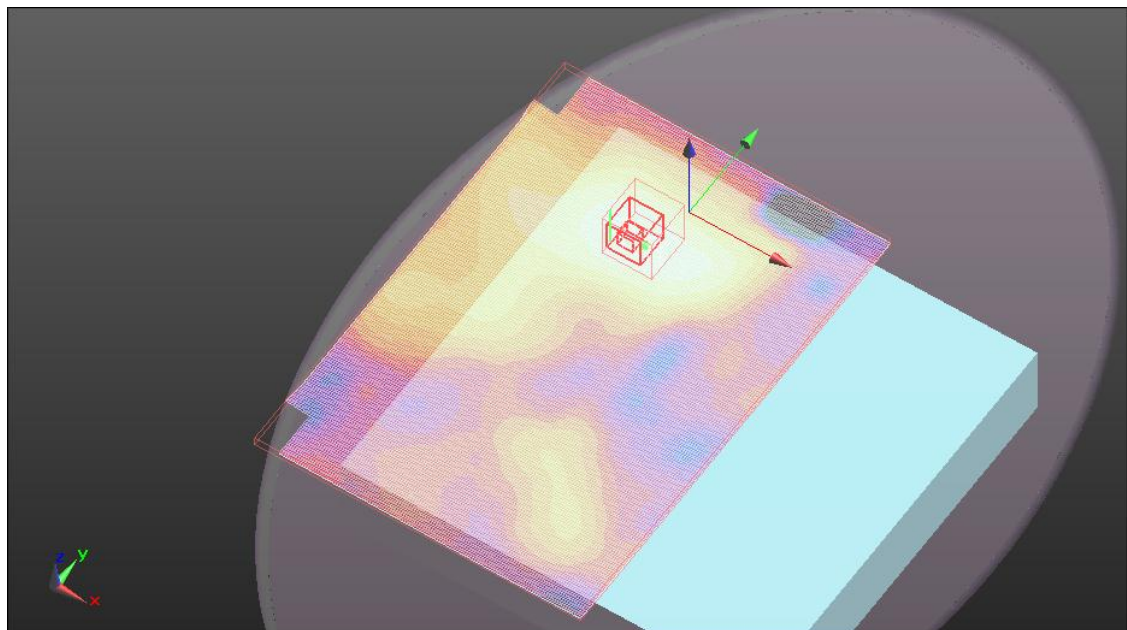
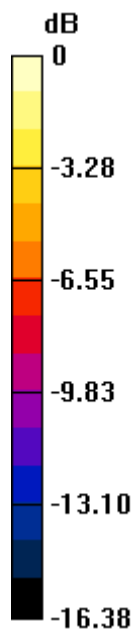
QPSK_BW-5MHz_Mid-Ch/Zoom Scan (5x5x7)/Cube 0: Measurement grid: dx=8mm, dy=8mm, dz=5mm

Reference Value = 4.466 V/m; Power Drift = 0.12 dB

Peak SAR (extrapolated) = 0.068 W/kg

SAR(1 g) = 0.034 mW/g; SAR(10 g) = 0.021 mW/g[Info: Interpolated medium parameters used for SAR evaluation.](#)

Maximum value of SAR (measured) = 0.044 mW/g



0 dB = 0.044mW/g

Test Laboratory: UL CCS SAR Lab C

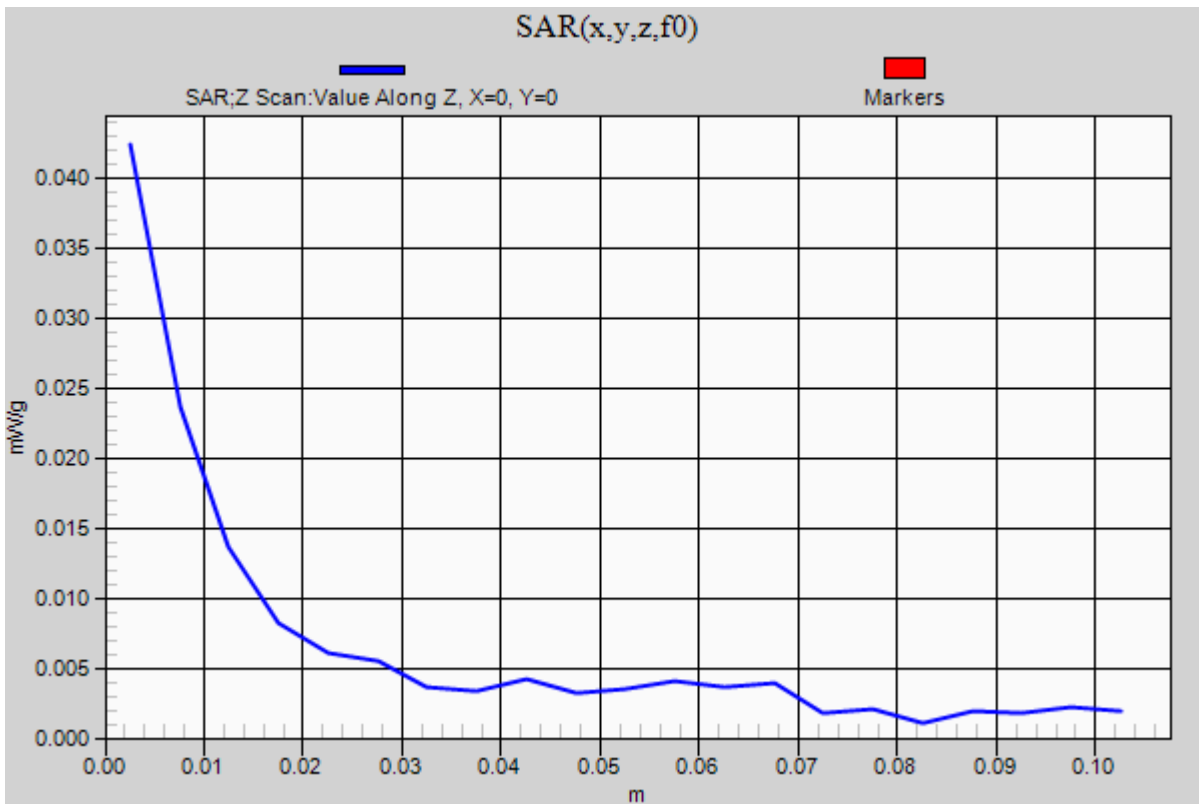
TD-CDMA 2.6GHz Band_Body_Bottom/Base

Communication System: TD-CDMA; Frequency: 2593 MHz;Duty Cycle: 1:3.0

QPSK_BW-5MHz_Mid-Ch/Z Scan (1x1x21): Measurement grid: dx=20mm, dy=20mm, dz=5mm

Info: [Interpolated medium parameters used for SAR evaluation.](#)

Maximum value of SAR (measured) = 0.042 mW/g



Test Laboratory: UL CCS SAR Lab C

TD-CDMA 2.6GHz Band_Body_Bottom/Base

Communication System: TD-CDMA; Frequency: 2593 MHz; Duty Cycle: 1:3.0

Medium parameters used (interpolated): $f = 2593$ MHz; $\sigma = 2.149$ mho/m; $\epsilon_r = 52.414$; $\rho = 1000$ kg/m³

Phantom section: Flat Section

Room Ambient Temperature: 24.0 deg. C; Liquid Temperature: 23.0 deg. C

DASY5 Configuration:

- Area Scan setting - Find Secondary Maximum Within: 2.0 dB and with a peak SAR value greater than 0.0012W/kg
- Probe: EX3DV4 - SN3772; ConvF(6.3, 6.3, 6.3); Calibrated: 5/3/2011
- Sensor-Surface: 2.5mm (Mechanical Surface Detection (Locations From Previous Scan Used)), Sensor-Surface: 2.5mm (Mechanical Surface Detection)
- Electronics: DAE4 Sn1239; Calibrated: 10/18/2011
- Phantom: ELI v4.0 (B); Type: QDOVA001BB; Serial: 1121
- Measurement SW: DASY52, Version 52.6 (2); SEMCAD X Version 14.4.5 (3634)

16QAM_BW-5MHz_Mid-Ch/Area Scan (141x201x1): Measurement grid: dx=15mm, dy=15mm[Info: Interpolated medium parameters used for SAR evaluation.](#)

Maximum value of SAR (interpolated) = 0.045 mW/g

16QAM_BW-5MHz_Mid-Ch/Zoom Scan (5x5x7)/Cube 0: Measurement grid: dx=8mm, dy=8mm, dz=5mm

Reference Value = 4.526 V/m; Power Drift = 0.03 dB, Peak SAR (extrapolated) = 0.061 W/kg

SAR(1 g) = 0.034 mW/g; SAR(10 g) = 0.021 mW/g[Info: Interpolated medium parameters used for SAR evaluation.](#)

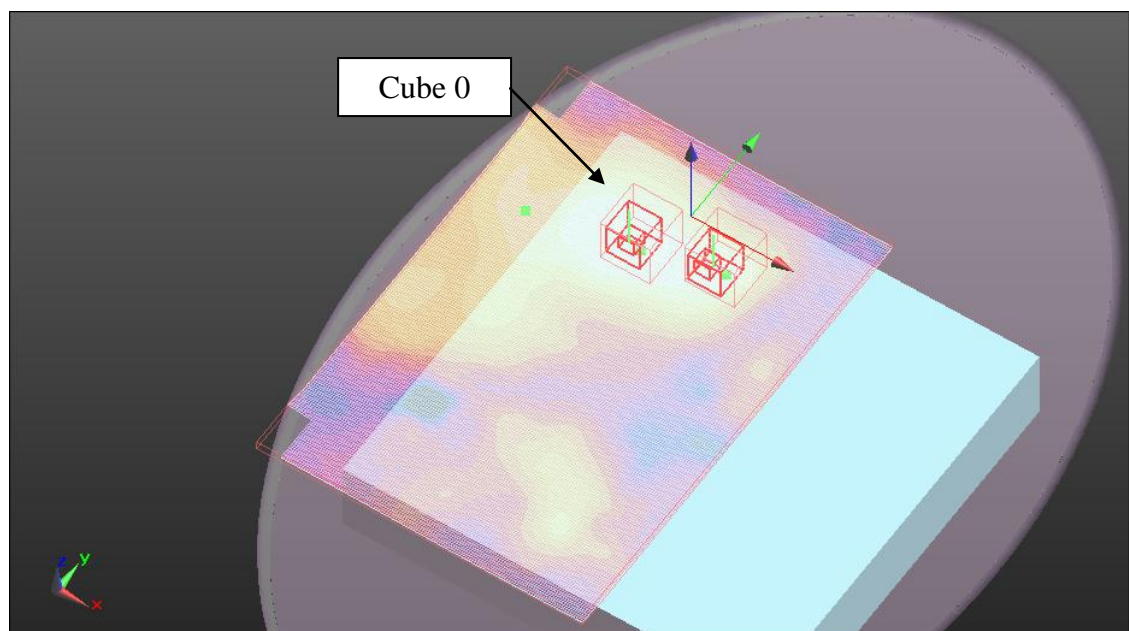
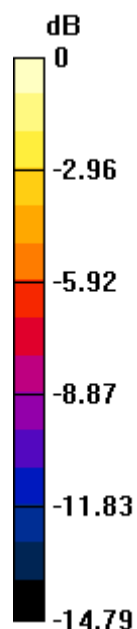
Maximum value of SAR (measured) = 0.045 mW/g

16QAM_BW-5MHz_Mid-Ch/Zoom Scan (5x5x7)/Cube 1: Measurement grid: dx=8mm, dy=8mm, dz=5mm

Reference Value = 4.526 V/m; Power Drift = 0.03 dB, Peak SAR (extrapolated) = 0.052 W/kg

SAR(1 g) = 0.029 mW/g; SAR(10 g) = 0.017 mW/g[Info: Interpolated medium parameters used for SAR evaluation.](#)

Maximum value of SAR (measured) = 0.036 mW/g



0 dB = 0.040mW/g

Test Laboratory: UL CCS SAR Lab C

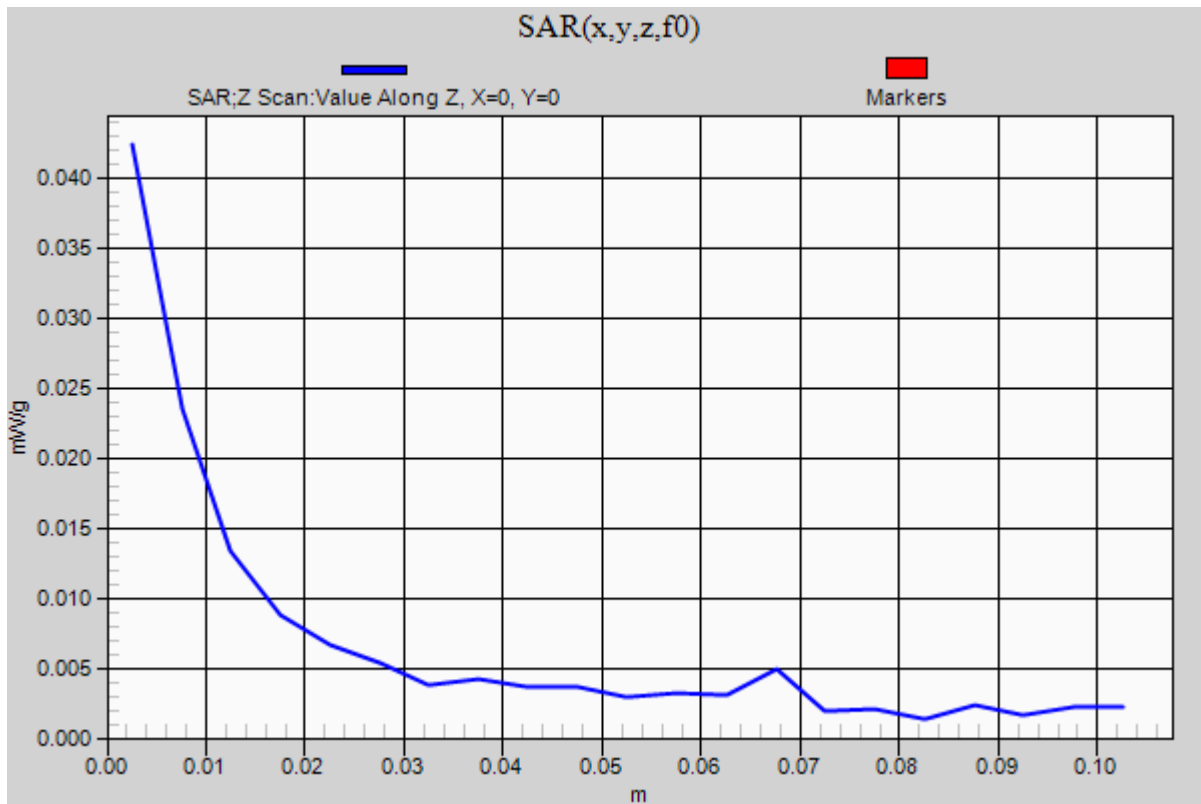
TD-CDMA 2.6GHz Band_Body_Bottom/Base

Communication System: TD-CDMA; Frequency: 2593 MHz;Duty Cycle: 1:3.0

16QAM_BW-5MHz_Mid-Ch/Z Scan (1x1x21): Measurement grid: dx=20mm, dy=20mm, dz=5mm

Info: [Interpolated medium parameters used for SAR evaluation.](#)

Maximum value of SAR (measured) = 0.042 mW/g



Test Laboratory: UL CCS SAR Lab C

TD-CDMA 2.6GHz Band_Body_Bottom/Base

Communication System: TD-CDMA; Frequency: 2593 MHz; Duty Cycle: 1:3.0

Medium parameters used (interpolated): $f = 2593$ MHz; $\sigma = 2.149$ mho/m; $\epsilon_r = 52.414$; $\rho = 1000$ kg/m³

Phantom section: Flat Section

Room Ambient Temperature: 24.0 deg. C; Liquid Temperature: 23.0 deg. C

DASY5 Configuration:

- Area Scan setting - Find Secondary Maximum Within: 2.0 dB and with a peak SAR value greater than 0.0012W/kg
- Probe: EX3DV4 - SN3772; ConvF(6.3, 6.3, 6.3); Calibrated: 5/3/2011
- Sensor-Surface: 2.5mm (Mechanical Surface Detection (Locations From Previous Scan Used)), Sensor-Surface: 2.5mm (Mechanical Surface Detection)
- Electronics: DAE4 Sn1239; Calibrated: 10/18/2011
- Phantom: ELI v4.0 (B); Type: QDOVA001BB; Serial: 1121
- Measurement SW: DASY52, Version 52.6 (2); SEMCAD X Version 14.4.5 (3634)

64QAM_BW-5MHz_Mid-Ch/Area Scan (141x201x1): Measurement grid: dx=15mm, dy=15mm[Info: Interpolated medium parameters used for SAR evaluation.](#)

Maximum value of SAR (interpolated) = 0.041 mW/g

64QAM_BW-5MHz_Mid-Ch/Zoom Scan (5x5x7)/Cube 0: Measurement grid: dx=8mm, dy=8mm, dz=5mm

Reference Value = 4.540 V/m; Power Drift = -0.11 dB, Peak SAR (extrapolated) = 0.061 W/kg

SAR(1 g) = 0.034 mW/g; SAR(10 g) = 0.021 mW/g[Info: Interpolated medium parameters used for SAR evaluation.](#)

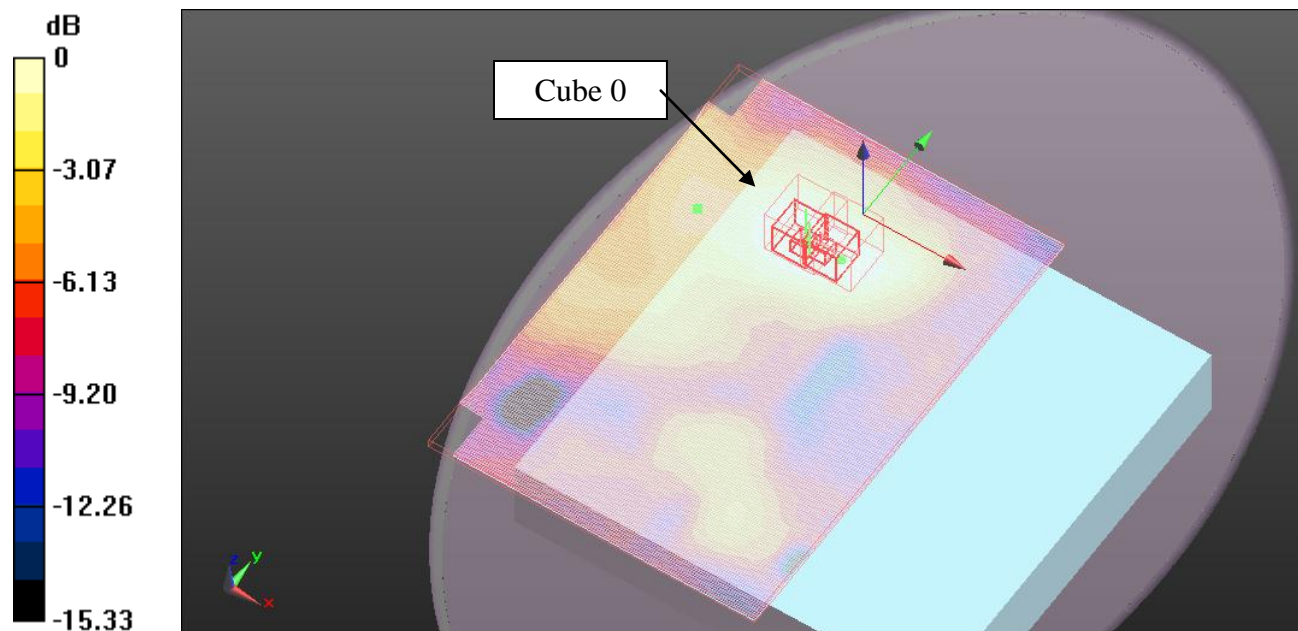
Maximum value of SAR (measured) = 0.043 mW/g

64QAM_BW-5MHz_Mid-Ch/Zoom Scan (5x5x7)/Cube 1: Measurement grid: dx=8mm, dy=8mm, dz=5mm

Reference Value = 4.540 V/m; Power Drift = -0.11 dB, Peak SAR (extrapolated) = 0.061 W/kg

SAR(1 g) = 0.033 mW/g; SAR(10 g) = 0.020 mW/g[Info: Interpolated medium parameters used for SAR evaluation.](#)

Maximum value of SAR (measured) = 0.044 mW/g



0 dB = 0.040mW/g

Test Laboratory: UL CCS SAR Lab C

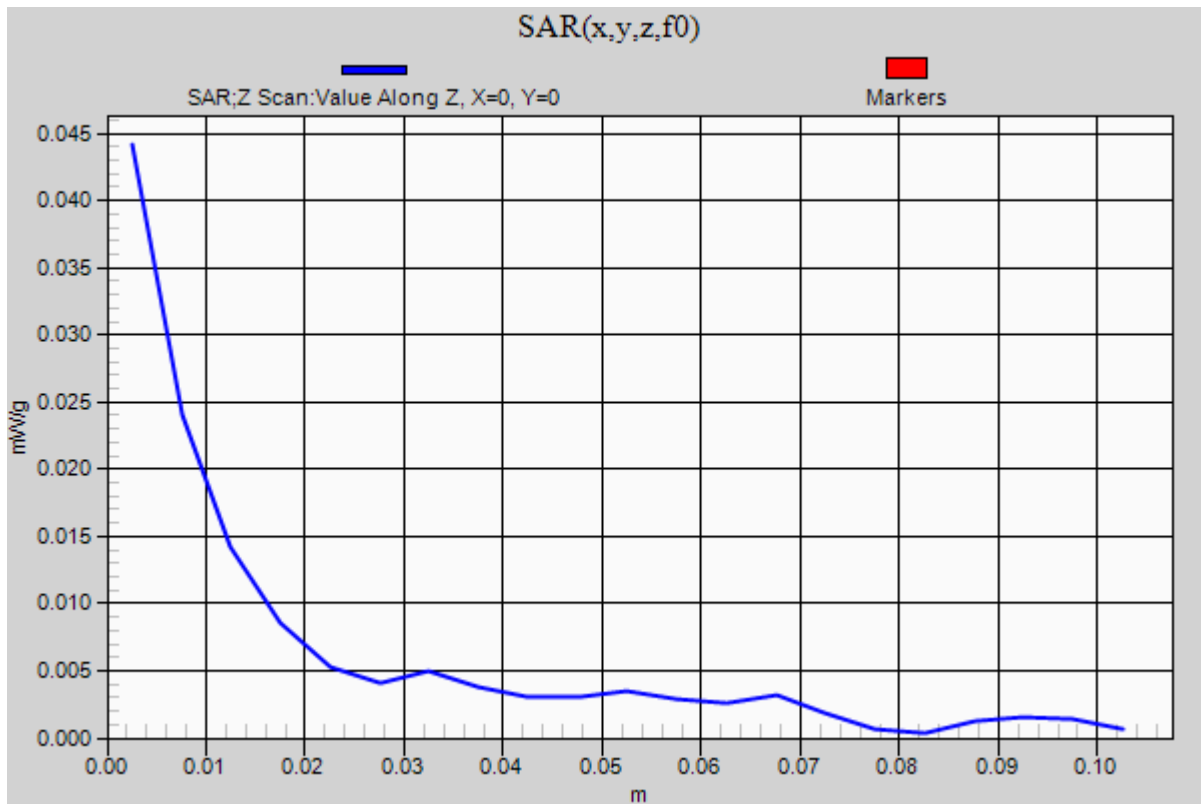
TD-CDMA 2.6GHz Band_Body_Bottom/Base

Communication System: TD-CDMA; Frequency: 2593 MHz;Duty Cycle: 1:3.0

64QAM_BW-5MHz_Mid-Ch/Z Scan (1x1x21): Measurement grid: dx=20mm, dy=20mm, dz=5mm

Info: [Interpolated medium parameters used for SAR evaluation.](#)

Maximum value of SAR (measured) = 0.044 mW/g



Test Laboratory: UL CCS SAR Lab C

TD-CDMA 2.6GHz Band_Body_Bottom-Base/Tilt

Communication System: TD-CDMA; Frequency: 2593 MHz; Duty Cycle: 1:3.0

Medium parameters used (interpolated): $f = 2593$ MHz; $\sigma = 2.169$ mho/m; $\epsilon_r = 52.992$; $\rho = 1000$ kg/m³

Phantom section: Flat Section

Room Ambient Temperature: 24.0 deg. C; Liquid Temperature: 23.0 deg. C

DASY5 Configuration:

- Area Scan setting - Find Secondary Maximum Within: 2.0 dB and with a peak SAR value greater than 0.0012W/kg
- Probe: EX3DV4 - SN3772; ConvF(6.3, 6.3, 6.3); Calibrated: 5/3/2011
- Sensor-Surface: 2.5mm (Mechanical Surface Detection)
- Electronics: DAE4 Sn1239; Calibrated: 10/18/2011
- Phantom: ELI v5.0 (A); Type: QDOVA001BB; Serial: 1117
- Measurement SW: DASY52, Version 52.8 (0); SEMCAD X Version 14.6.4 (4989)

QPSK_BW-10MHz_Mid-Ch/Area Scan (121x161x1): Measurement grid: dx=15mm, dy=15mm[Info: Interpolated medium parameters used for SAR evaluation.](#)

Maximum value of SAR (interpolated) = 0.366 mW/g

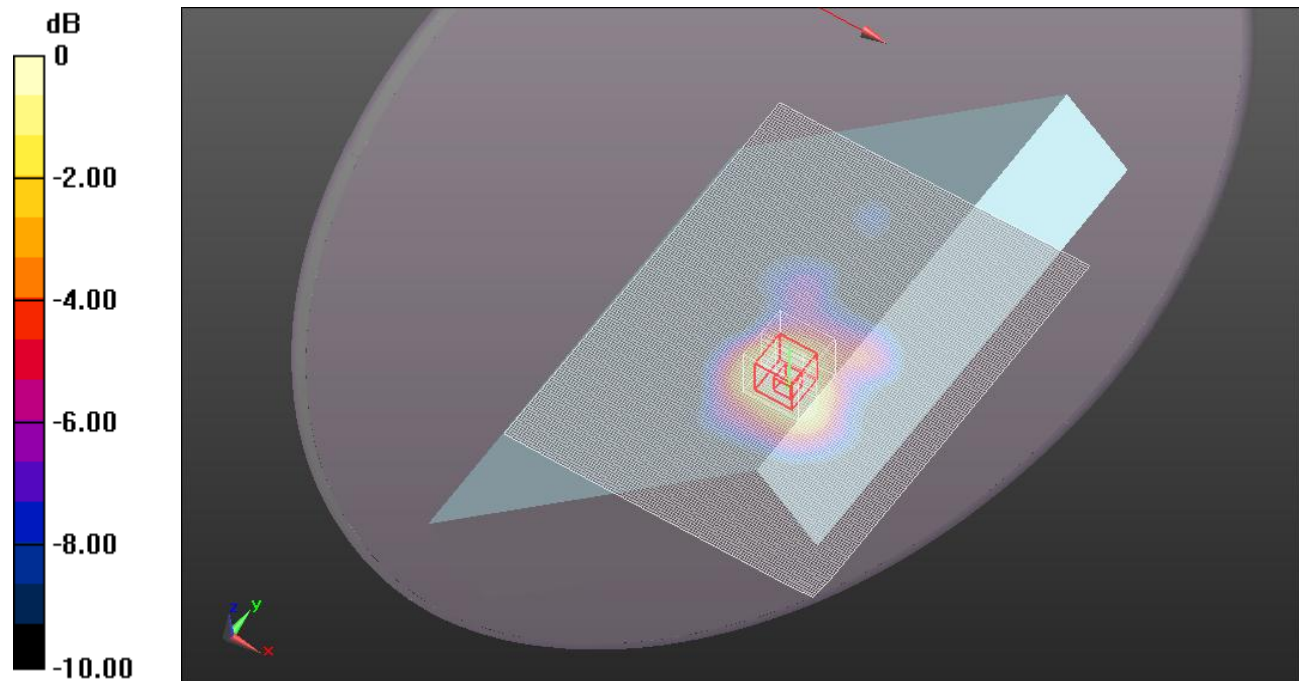
QPSK_BW-10MHz_Mid-Ch/Zoom Scan(1st) (5x5x7)/Cube 0: Measurement grid: dx=8mm, dy=8mm, dz=5mm

Reference Value = 12.621 V/m; Power Drift = -0.03 dB

Peak SAR (extrapolated) = 0.5170

SAR(1 g) = 0.273 mW/g; SAR(10 g) = 0.152 mW/g[Info: Interpolated medium parameters used for SAR evaluation.](#)

Maximum value of SAR (measured) = 0.359 mW/g



0 dB = 0.360mW/g = -8.87 dB mW/g

Test Laboratory: UL CCS SAR Lab C

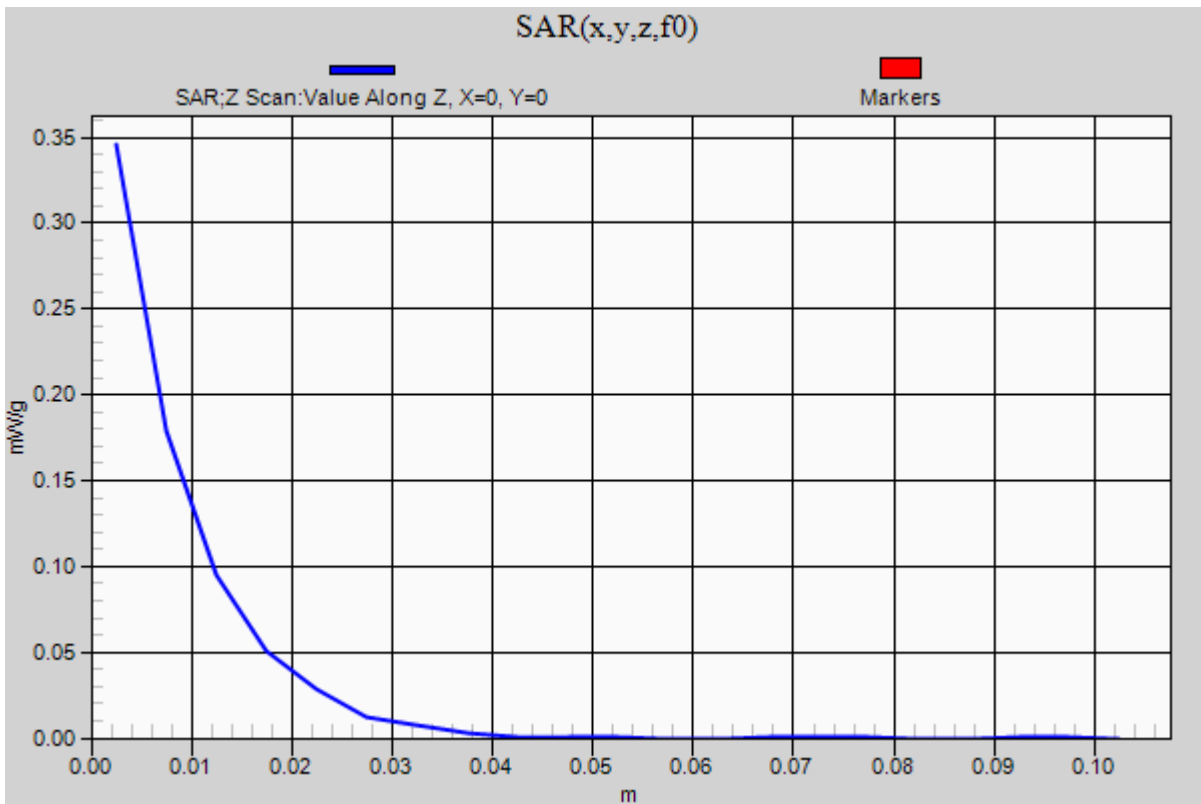
TD-CDMA 2.6GHz Band_Body_Bottom-Base/Tilt

Communication System: TD-CDMA; Frequency: 2593 MHz;Duty Cycle: 1:3.0

QPSK_BW-10MHz_Mid-Ch/Z Scan (1x1x21): Measurement grid: dx=20mm, dy=20mm, dz=5mm

Info: [Interpolated medium parameters used for SAR evaluation.](#)

Maximum value of SAR (measured) = 0.346 mW/g



Test Laboratory: UL CCS SAR Lab C

TD-CDMA 2.6GHz Band_Body_Bottom-Base/Tilt

Communication System: TD-CDMA; Frequency: 2593 MHz; Duty Cycle: 1:3.0

Medium parameters used (interpolated): $f = 2593$ MHz; $\sigma = 2.169$ mho/m; $\epsilon_r = 52.992$; $\rho = 1000$ kg/m³

Phantom section: Flat Section

Room Ambient Temperature: 24.0 deg. C; Liquid Temperature: 23.0 deg. C

DASY5 Configuration:

- Area Scan setting - Find Secondary Maximum Within: 2.0 dB and with a peak SAR value greater than 0.0012W/kg
- Probe: EX3DV4 - SN3772; ConvF(6.3, 6.3, 6.3); Calibrated: 5/3/2011
- Sensor-Surface: 2.5mm (Mechanical Surface Detection (Locations From Previous Scan Used)), Sensor-Surface: 2.5mm (Mechanical Surface Detection)
- Electronics: DAE4 Sn1239; Calibrated: 10/18/2011
- Phantom: ELI v5.0 (A); Type: QDOVA001BB; Serial: 1117
- Measurement SW: DASY52, Version 52.8 (0); SEMCAD X Version 14.6.4 (4989)

16QAM_BW-10MHz_Mid-Ch/Area Scan (121x161x1): Measurement grid: dx=15mm, dy=15mm[Info: Interpolated medium parameters used for SAR evaluation.](#)

Maximum value of SAR (interpolated) = 0.368 mW/g

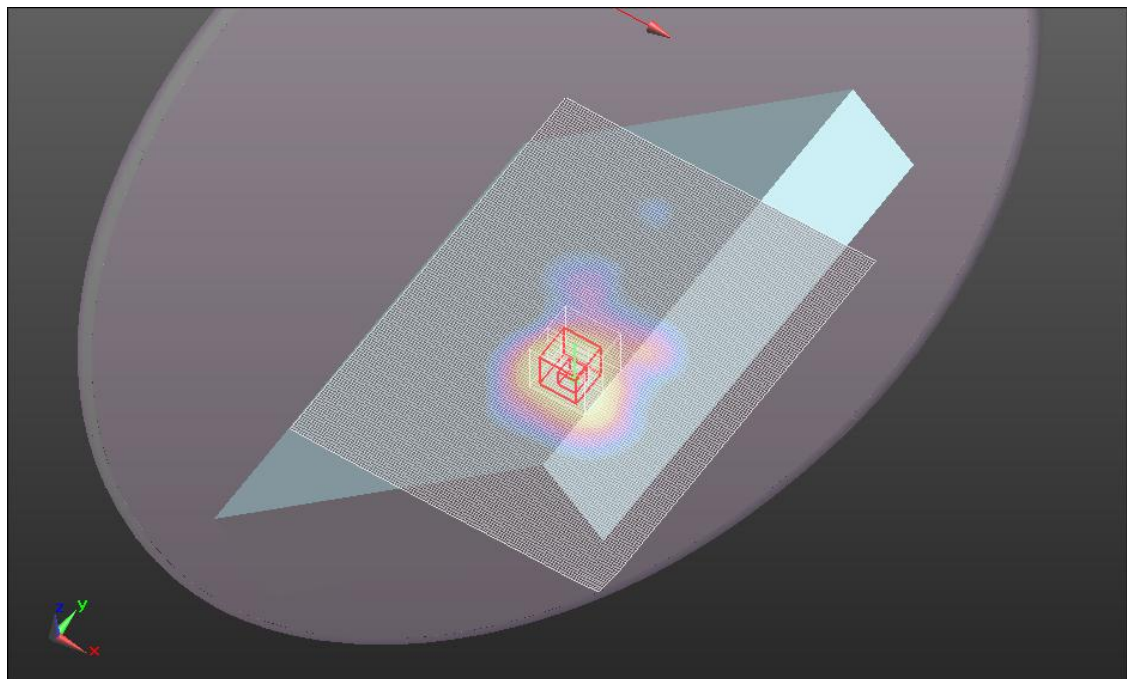
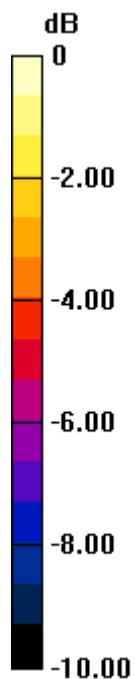
16QAM_BW-10MHz_Mid-Ch/Zoom Scan(1st) (5x5x7)/Cube 0: Measurement grid: dx=8mm, dy=8mm, dz=5mm

Reference Value = 12.823 V/m; Power Drift = -0.01 dB

Peak SAR (extrapolated) = 0.5290

SAR(1 g) = 0.279 mW/g; SAR(10 g) = 0.156 mW/g[Info: Interpolated medium parameters used for SAR evaluation.](#)

Maximum value of SAR (measured) = 0.368 mW/g



0 dB = 0.370mW/g = -8.64 dB mW/g

Test Laboratory: UL CCS SAR Lab C

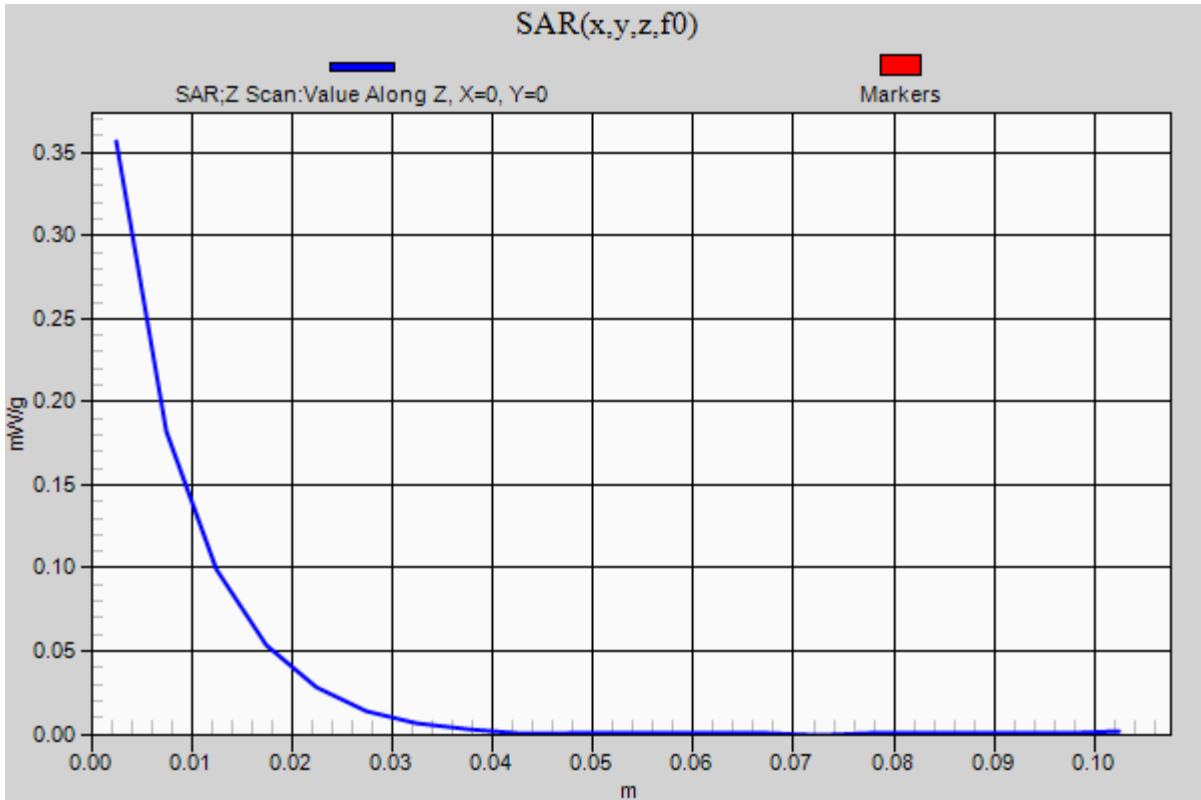
TD-CDMA 2.6GHz Band_Body_Bottom-Base/Tilt

Communication System: TD-CDMA; Frequency: 2593 MHz;Duty Cycle: 1:3.0

16QAM_BW-10MHz_Mid-Ch/Z Scan (1x1x21): Measurement grid: dx=20mm, dy=20mm, dz=5mm

Info: [Interpolated medium parameters used for SAR evaluation.](#)

Maximum value of SAR (measured) = 0.357 mW/g



Test Laboratory: UL CCS SAR Lab C

TD-CDMA 2.6GHz Band_Body_Bottom-Base/Tilt

Communication System: TD-CDMA; Frequency: 2593 MHz; Duty Cycle: 1:3.0

Medium parameters used (interpolated): $f = 2593$ MHz; $\sigma = 2.169$ mho/m; $\epsilon_r = 52.992$; $\rho = 1000$ kg/m³

Phantom section: Flat Section

Room Ambient Temperature: 24.0 deg. C; Liquid Temperature: 23.0 deg. C

DASY5 Configuration:

- Area Scan setting - Find Secondary Maximum Within: 2.0 dB and with a peak SAR value greater than 0.0012W/kg
- Probe: EX3DV4 - SN3772; ConvF(6.3, 6.3, 6.3); Calibrated: 5/3/2011
- Sensor-Surface: 2.5mm (Mechanical Surface Detection (Locations From Previous Scan Used)), Sensor-Surface: 2.5mm (Mechanical Surface Detection)
- Electronics: DAE4 Sn1239; Calibrated: 10/18/2011
- Phantom: ELI v5.0 (A); Type: QDOVA001BB; Serial: 1117
- Measurement SW: DASY52, Version 52.8 (0); SEMCAD X Version 14.6.4 (4989)

64QAM_BW-10MHz_Mid-Ch/Area Scan (121x161x1): Measurement grid: dx=15mm, dy=15mm[Info: Interpolated medium parameters used for SAR evaluation.](#)

Maximum value of SAR (interpolated) = 0.355 mW/g

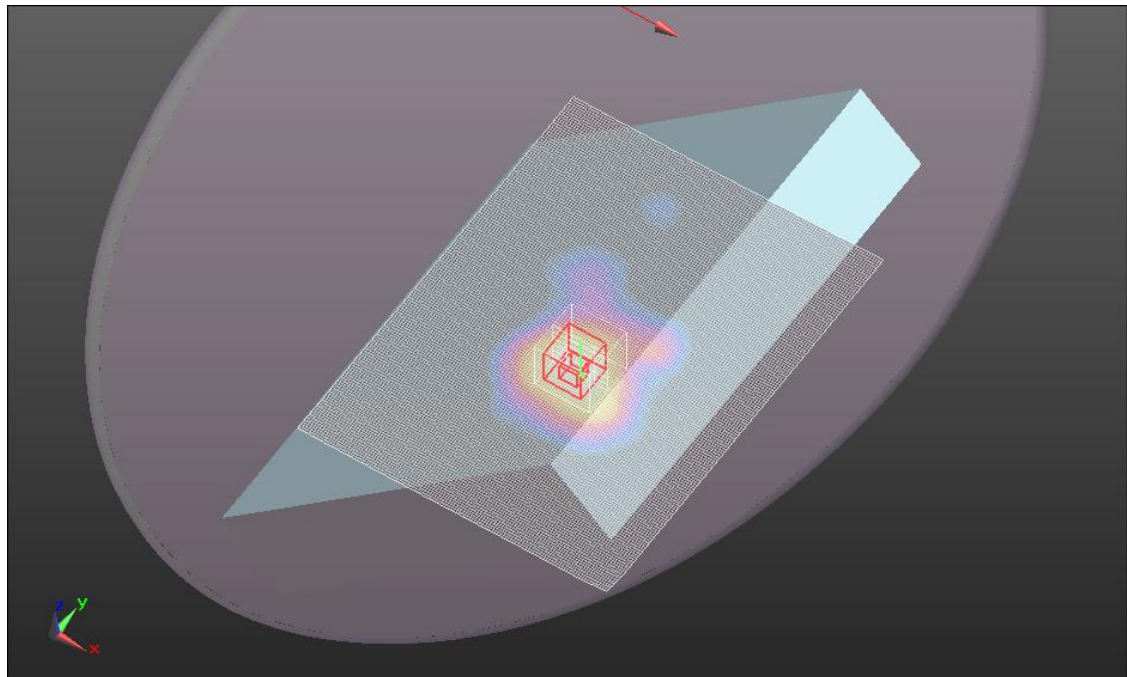
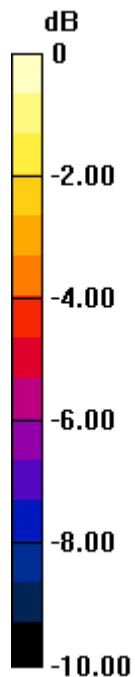
64QAM_BW-10MHz_Mid-Ch/Zoom Scan(1st) (5x5x7)/Cube 0: Measurement grid: dx=8mm, dy=8mm, dz=5mm

Reference Value = 12.858 V/m; Power Drift = -0.04 dB

Peak SAR (extrapolated) = 0.5220

SAR(1 g) = 0.274 mW/g; SAR(10 g) = 0.153 mW/g[Info: Interpolated medium parameters used for SAR evaluation.](#)

Maximum value of SAR (measured) = 0.359 mW/g



0 dB = 0.360mW/g = -8.87 dB mW/g

Test Laboratory: UL CCS SAR Lab C

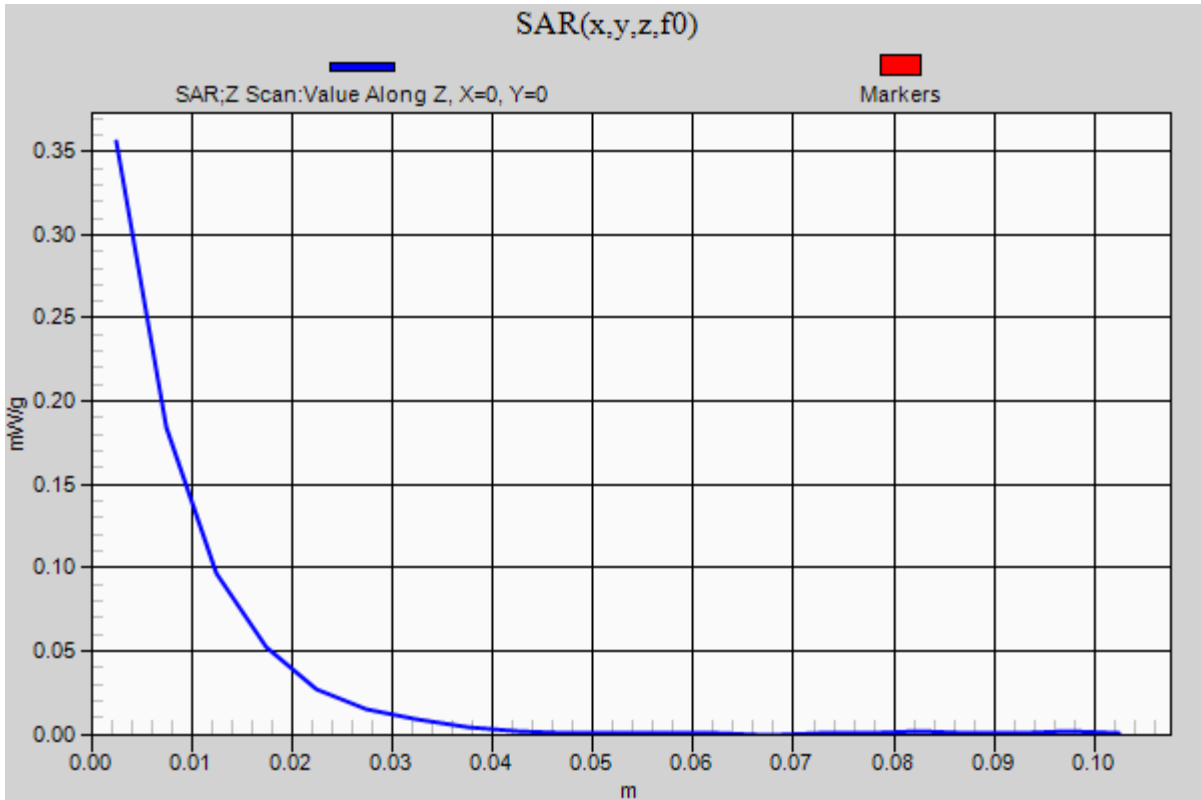
TD-CDMA 2.6GHz Band_Body_Bottom-Base/Tilt

Communication System: TD-CDMA; Frequency: 2593 MHz;Duty Cycle: 1:3.0

64QAM_BW-10MHz_Mid-Ch/Z Scan (1x1x21): Measurement grid: dx=20mm, dy=20mm, dz=5mm

Info: [Interpolated medium parameters used for SAR evaluation.](#)

Maximum value of SAR (measured) = 0.356 mW/g



Test Laboratory: UL CCS SAR Lab C

TD-CDMA 2.6GHz Band_Body_Bottom-Base/Tilt

Communication System: TD-CDMA; Frequency: 2593 MHz; Duty Cycle: 1:3.0

Medium parameters used (interpolated): $f = 2593$ MHz; $\sigma = 2.169$ mho/m; $\epsilon_r = 52.992$; $\rho = 1000$ kg/m³

Phantom section: Flat Section

Room Ambient Temperature: 24.0 deg. C; Liquid Temperature: 23.0 deg. C

DASY5 Configuration:

- Area Scan setting - Find Secondary Maximum Within: 2.0 dB and with a peak SAR value greater than 0.0012W/kg
- Probe: EX3DV4 - SN3772; ConvF(6.3, 6.3, 6.3); Calibrated: 5/3/2011
- Sensor-Surface: 2.5mm (Mechanical Surface Detection (Locations From Previous Scan Used)), Sensor-Surface: 2.5mm (Mechanical Surface Detection)
- Electronics: DAE4 Sn1239; Calibrated: 10/18/2011
- Phantom: ELI v5.0 (A); Type: QDOVA001BB; Serial: 1117
- Measurement SW: DASY52, Version 52.8 (0); SEMCAD X Version 14.6.4 (4989)

QPSK_BW-5MHz_Mid-Ch/Area Scan (121x161x1): Measurement grid: dx=15mm, dy=15mm

Info: [Interpolated medium parameters used for SAR evaluation.](#)

Maximum value of SAR (interpolated) = 0.054 mW/g

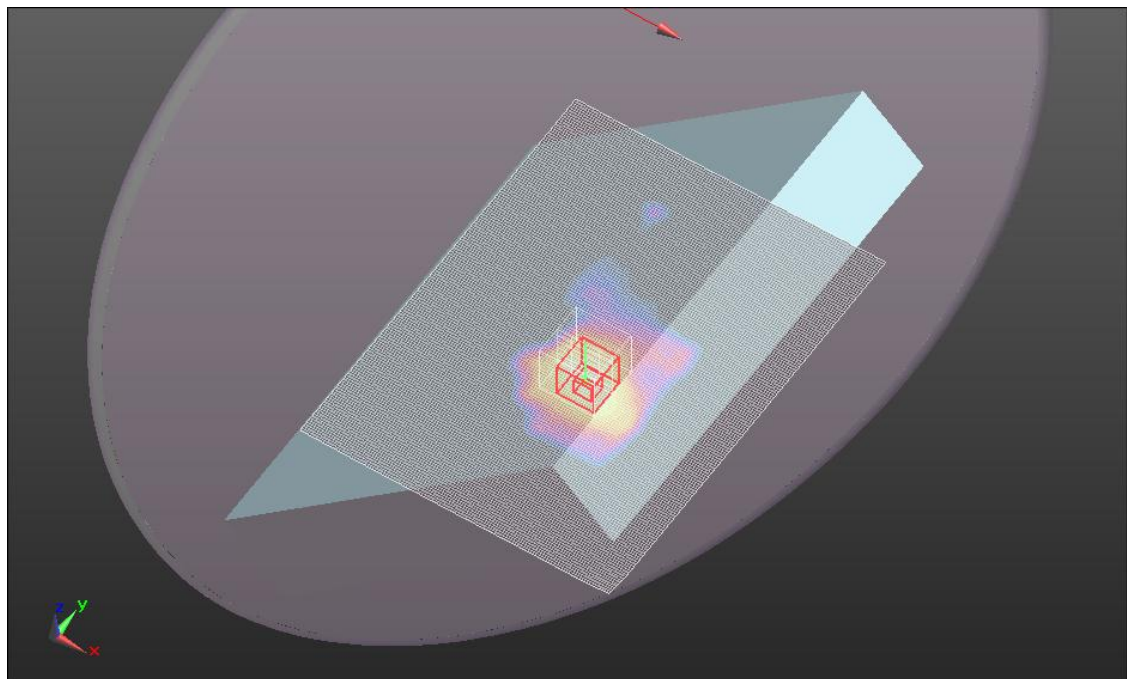
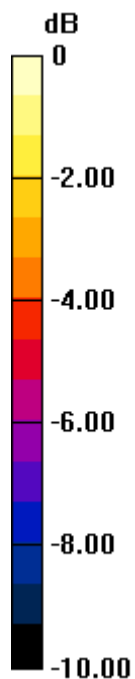
QPSK_BW-5MHz_Mid-Ch/Zoom Scan(1st) (5x5x7)/Cube 0: Measurement grid: dx=8mm, dy=8mm, dz=5mm

Reference Value = 4.814 V/m; Power Drift = -0.15 dB

Peak SAR (extrapolated) = 0.0800

SAR(1 g) = 0.042 mW/g; SAR(10 g) = 0.023 mW/gInfo: [Interpolated medium parameters used for SAR evaluation.](#)

Maximum value of SAR (measured) = 0.055 mW/g



0 dB = 0.060mW/g = -24.44 dB mW/g

Test Laboratory: UL CCS SAR Lab C

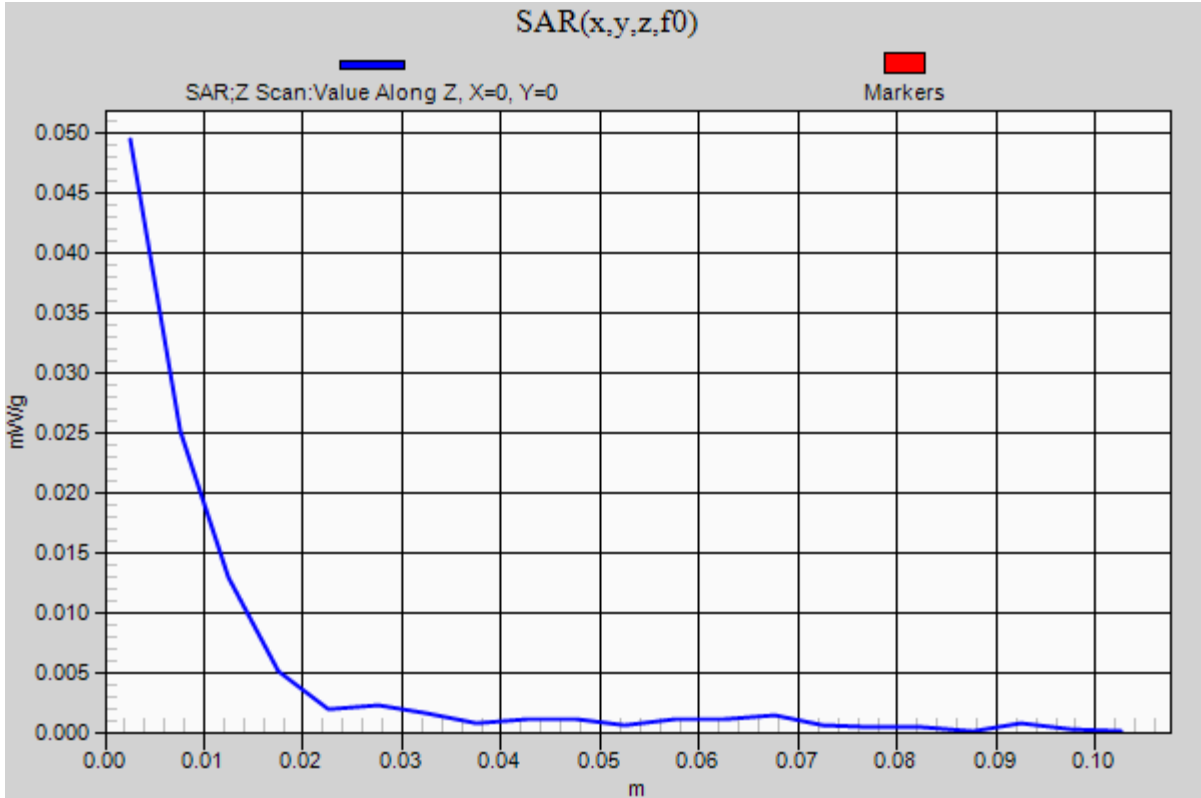
TD-CDMA 2.6GHz Band_Body_Bottom-Base

Communication System: TD-CDMA; Frequency: 2593 MHz;Duty Cycle: 1:3.0

QPSK_BW-5MHz_Mid-Ch/Z Scan (1x1x21): Measurement grid: dx=20mm, dy=20mm, dz=5mm

Info: [Interpolated medium parameters used for SAR evaluation.](#)

Maximum value of SAR (measured) = 0.049 mW/g



Test Laboratory: UL CCS SAR Lab C

TD-CDMA 2.6GHz Band_Body_Bottom-Base/Tilt

Communication System: TD-CDMA; Frequency: 2593 MHz; Duty Cycle: 1:3.0

Medium parameters used (interpolated): $f = 2593$ MHz; $\sigma = 2.169$ mho/m; $\epsilon_r = 52.992$; $\rho = 1000$ kg/m³

Phantom section: Flat Section

Room Ambient Temperature: 24.0 deg. C; Liquid Temperature: 23.0 deg. C

DASY5 Configuration:

- Area Scan setting - Find Secondary Maximum Within: 2.0 dB and with a peak SAR value greater than 0.0012W/kg
- Probe: EX3DV4 - SN3772; ConvF(6.3, 6.3, 6.3); Calibrated: 5/3/2011
- Sensor-Surface: 2.5mm (Mechanical Surface Detection (Locations From Previous Scan Used)), Sensor-Surface: 2.5mm (Mechanical Surface Detection)
- Electronics: DAE4 Sn1239; Calibrated: 10/18/2011
- Phantom: ELI v5.0 (A); Type: QDOVA001BB; Serial: 1117
- Measurement SW: DASY52, Version 52.8 (0); SEMCAD X Version 14.6.4 (4989)

16QAM_BW-5MHz_Mid-Ch/Area Scan (121x161x1): Measurement grid: dx=15mm, dy=15mm[Info: Interpolated medium parameters used for SAR evaluation.](#)

Maximum value of SAR (interpolated) = 0.057 mW/g

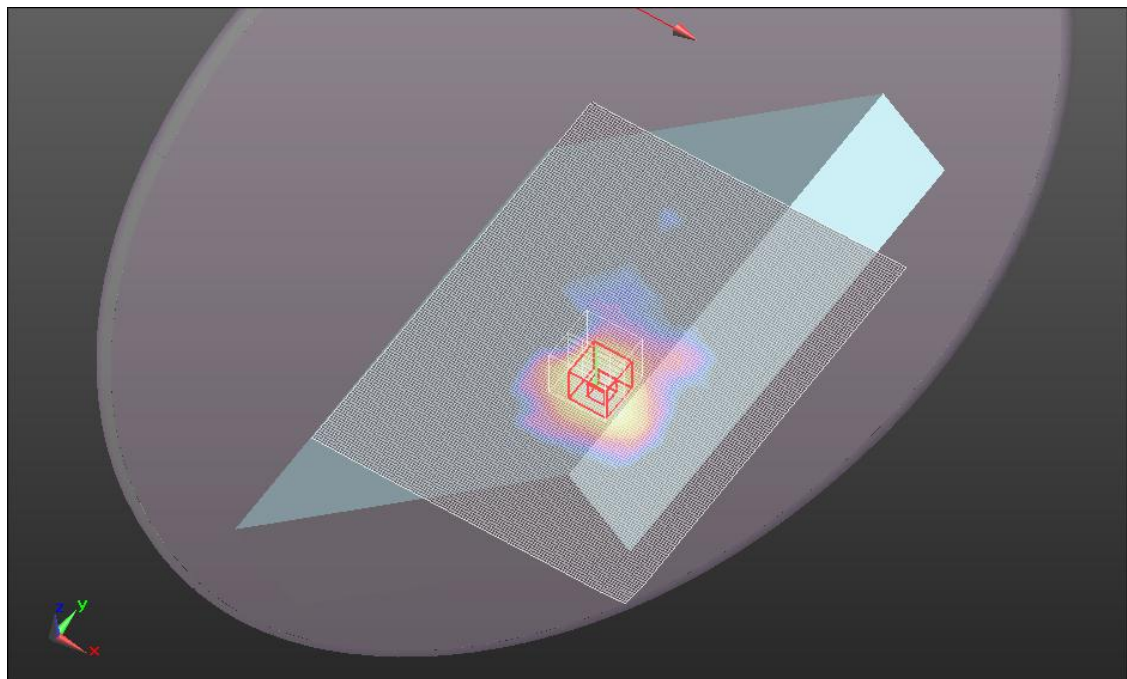
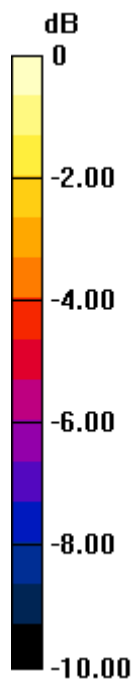
16QAM_BW-5MHz_Mid-Ch/Zoom Scan(1st) (5x5x7)/Cube 0: Measurement grid: dx=8mm, dy=8mm, dz=5mm

Reference Value = 4.858 V/m; Power Drift = -0.12 dB

Peak SAR (extrapolated) = 0.0880

SAR(1 g) = 0.042 mW/g; SAR(10 g) = 0.023 mW/g[Info: Interpolated medium parameters used for SAR evaluation.](#)

Maximum value of SAR (measured) = 0.056 mW/g



0 dB = 0.060mW/g = -24.44 dB mW/g

Test Laboratory: UL CCS SAR Lab C

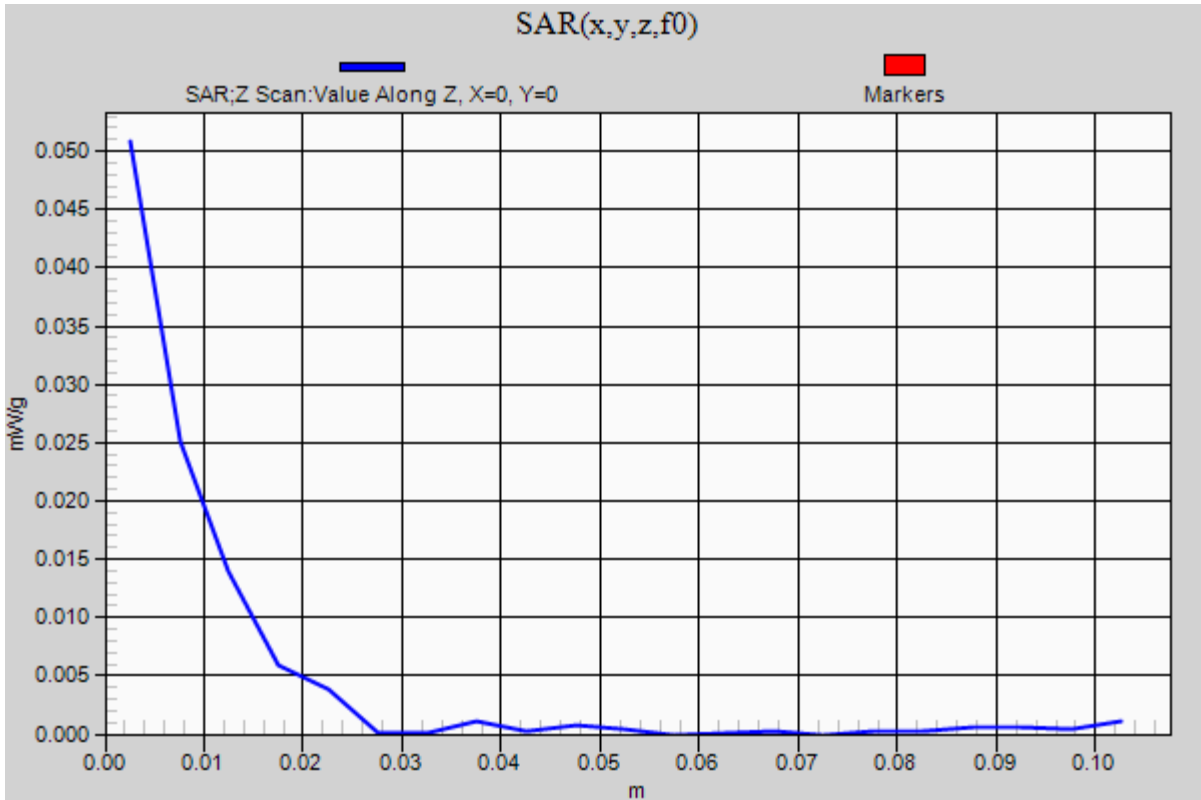
TD-CDMA 2.6GHz Band_Body_Bottom-Base/Tilt

Communication System: TD-CDMA; Frequency: 2593 MHz;Duty Cycle: 1:3.0

16QAM_BW-5MHz_Mid-Ch/Z Scan (1x1x21): Measurement grid: dx=20mm, dy=20mm, dz=5mm

Info: [Interpolated medium parameters used for SAR evaluation.](#)

Maximum value of SAR (measured) = 0.051 mW/g



Test Laboratory: UL CCS SAR Lab C

TD-CDMA 2.6GHz Band_Body_Bottom-Base/Tilt

Communication System: TD-CDMA; Frequency: 2593 MHz; Duty Cycle: 1:3.0

Medium parameters used (interpolated): $f = 2593$ MHz; $\sigma = 2.169$ mho/m; $\epsilon_r = 52.992$; $\rho = 1000$ kg/m³

Phantom section: Flat Section

Room Ambient Temperature: 24.0 deg. C; Liquid Temperature: 23.0 deg. C

DASY5 Configuration:

- Area Scan setting - Find Secondary Maximum Within: 2.0 dB and with a peak SAR value greater than 0.0012W/kg
- Probe: EX3DV4 - SN3772; ConvF(6.3, 6.3, 6.3); Calibrated: 5/3/2011
- Sensor-Surface: 2.5mm (Mechanical Surface Detection (Locations From Previous Scan Used)), Sensor-Surface: 2.5mm (Mechanical Surface Detection)
- Electronics: DAE4 Sn1239; Calibrated: 10/18/2011
- Phantom: ELI v5.0 (A); Type: QDOVA001BB; Serial: 1117
- Measurement SW: DASY52, Version 52.8 (0); SEMCAD X Version 14.6.4 (4989)

64QAM_BW-5MHz_Mid-Ch/Area Scan (121x161x1): Measurement grid: dx=15mm, dy=15mm[Info: Interpolated medium parameters used for SAR evaluation.](#)

Maximum value of SAR (interpolated) = 0.056 mW/g

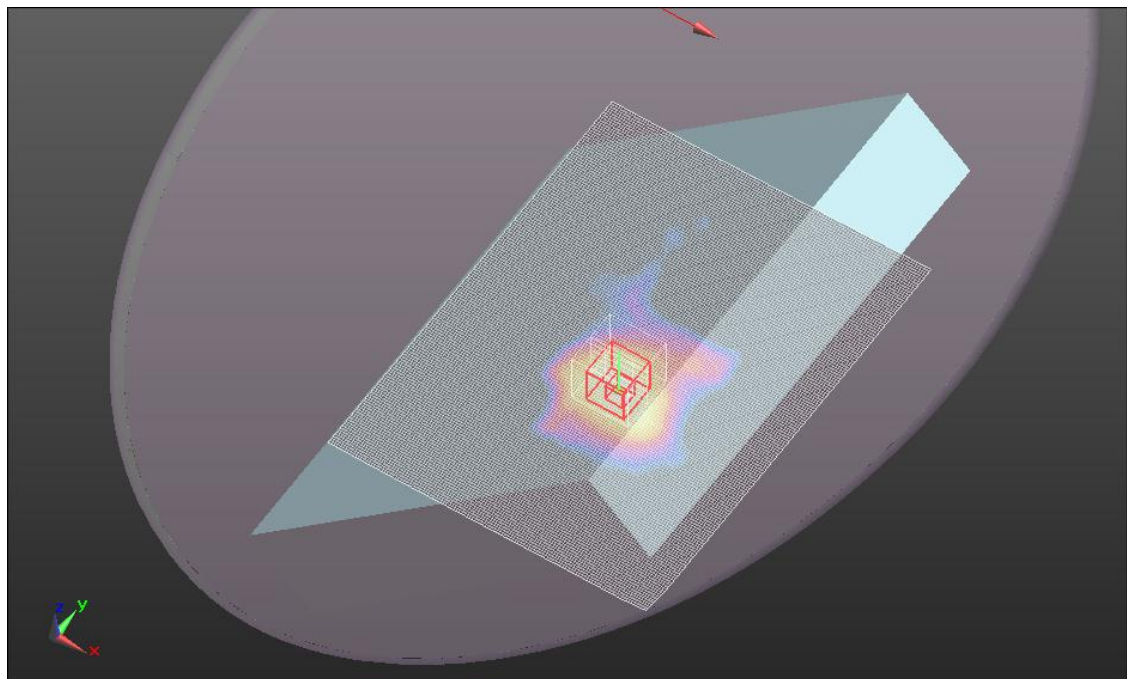
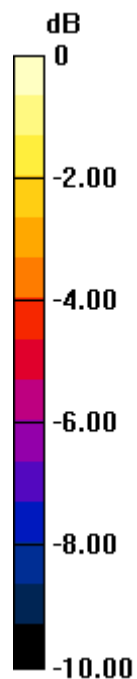
64QAM_BW-5MHz_Mid-Ch/Zoom Scan(1st) (5x5x7)/Cube 0: Measurement grid: dx=8mm, dy=8mm, dz=5mm

Reference Value = 4.959 V/m; Power Drift = -0.13 dB

Peak SAR (extrapolated) = 0.0830

SAR(1 g) = 0.042 mW/g; SAR(10 g) = 0.023 mW/g[Info: Interpolated medium parameters used for SAR evaluation.](#)

Maximum value of SAR (measured) = 0.056 mW/g



0 dB = 0.060mW/g = -24.44 dB mW/g

Test Laboratory: UL CCS SAR Lab C

TD-CDMA 2.6GHz Band_Body_Bottom-Base

Communication System: TD-CDMA; Frequency: 2593 MHz;Duty Cycle: 1:3.0

64QAM_BW-5MHz_Mid-Ch/Z Scan (1x1x21): Measurement grid: dx=20mm, dy=20mm, dz=5mm

Info: [Interpolated medium parameters used for SAR evaluation.](#)

Maximum value of SAR (measured) = 0.053 mW/g

