

Wi-Fi 2.4 GHz

Frequency: 2437 MHz; Duty Cycle: 1:1; Room Ambient Temperature: 24.0°C; Liquid Temperature: 23.0°C

Medium parameters used (interpolated): $f = 2437$ MHz; $\sigma = 1.988$ S/m; $\epsilon_r = 50.908$; $\rho = 1000$ kg/m³

DASY5 Configuration:

- Area Scan Setting: Find Secondary Maximum Within: 2.0 dB and with a peak SAR value greater than 0.0012W/kg
- Electronics: DAE4 Sn1343; Calibrated: 8/20/2012
- Probe: EX3DV4 - SN3871; ConvF(7.44, 7.44, 7.44); Calibrated: 8/20/2012;
- Sensor-Surface: 2mm (Mechanical Surface Detection)
- Phantom: ELI v5.0 B; Type: QDOVA002AA; Serial: 1180

Main Ant., Rear/802.11b Ch 6/Area Scan (8x9x1): Measurement grid: dx=10mm, dy=10mm

[Info: Interpolated medium parameters used for SAR evaluation.](#)

Maximum value of SAR (measured) = 0.243 W/kg

Main Ant., Rear/802.11b Ch 6/Zoom Scan (7x7x12)/Cube 0: Measurement grid: dx=4mm, dy=4mm, dz=2mm

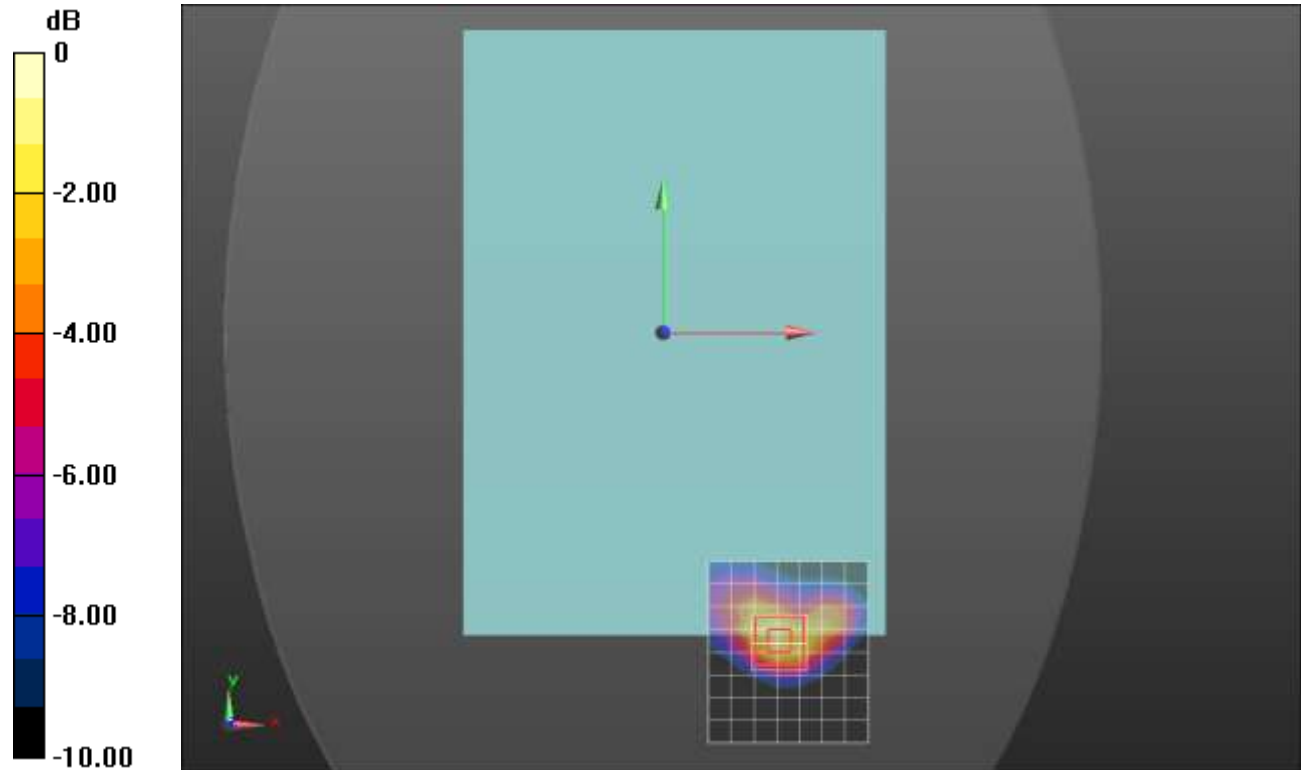
Reference Value = 10.623 V/m; Power Drift = 0.01 dB

Peak SAR (extrapolated) = 0.395 W/kg

SAR(1 g) = 0.186 W/kg; SAR(10 g) = 0.085 W/kg

[Info: Interpolated medium parameters used for SAR evaluation.](#)

Maximum value of SAR (measured) = 0.287 W/kg



0 dB = 0.287 W/kg = -5.42 dBW/kg

Wi-Fi 2.4 GHz

Frequency: 2437 MHz; Duty Cycle: 1:1; Room Ambient Temperature: 24.0°C; Liquid Temperature: 23.0°C
Medium parameters used (interpolated): $f = 2437$ MHz; $\sigma = 1.988$ S/m; $\epsilon_r = 50.908$; $\rho = 1000$ kg/m³

DASY5 Configuration:

- Area Scan Setting: Find Secondary Maximum Within: 2.0 dB and with a peak SAR value greater than 0.0012W/kg
- Electronics: DAE4 Sn1343; Calibrated: 8/20/2012
- Probe: EX3DV4 - SN3871; ConvF(7.44, 7.44, 7.44); Calibrated: 8/20/2012;
- Sensor-Surface: 2mm (Mechanical Surface Detection (Locations From Previous Scan Used)), Sensor-Surface: 2mm (Mechanical Surface Detection)
- Phantom: ELI v5.0 B; Type: QDOVA002AA; Serial: 1180

Main Ant., Rear/802.11g Ch 6/Area Scan (8x9x1): Measurement grid: dx=10mm, dy=10mm

[Info: Interpolated medium parameters used for SAR evaluation.](#)

Maximum value of SAR (measured) = 0.232 W/kg

Main Ant., Rear/802.11g Ch 6/Zoom Scan (7x7x12)/Cube 0: Measurement grid: dx=4mm, dy=4mm, dz=2mm

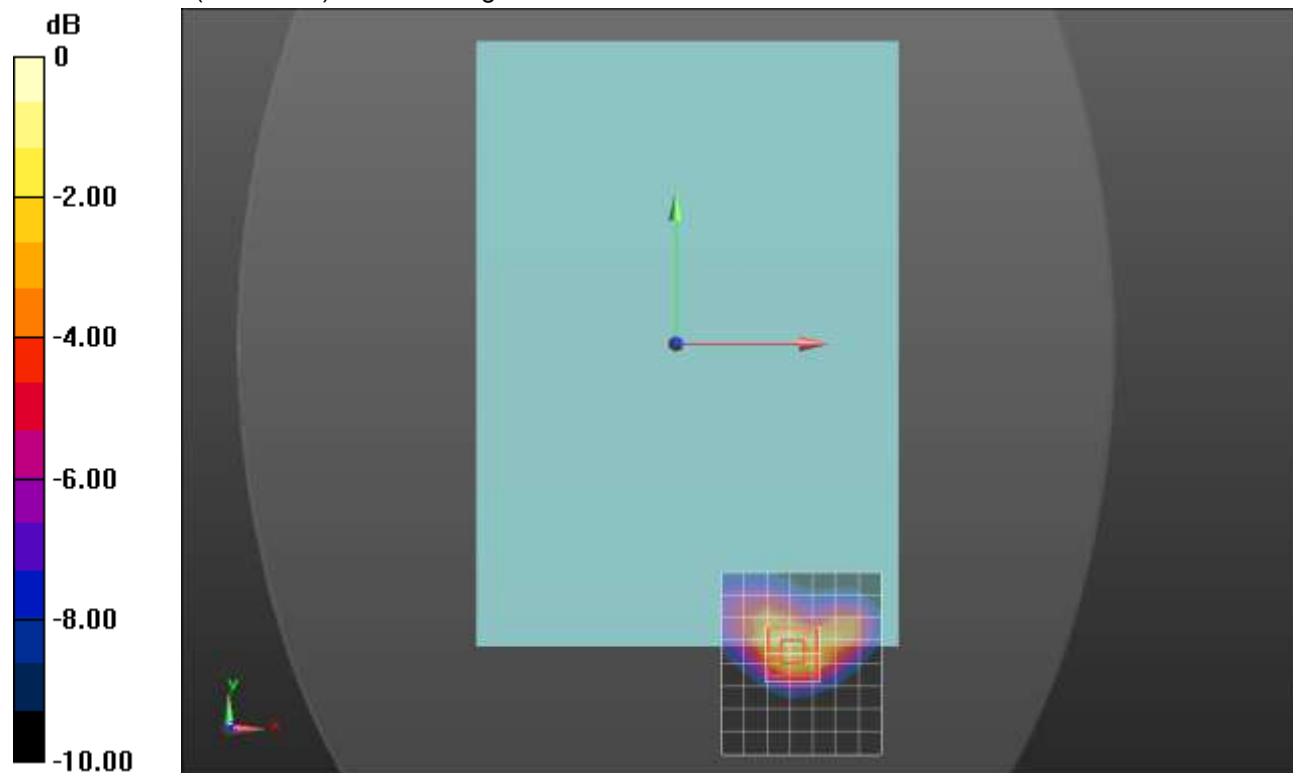
Reference Value = 10.522 V/m; Power Drift = 0.00 dB

Peak SAR (extrapolated) = 0.385 W/kg

SAR(1 g) = 0.183 W/kg; SAR(10 g) = 0.083 W/kg

[Info: Interpolated medium parameters used for SAR evaluation.](#)

Maximum value of SAR (measured) = 0.281 W/kg



0 dB = 0.281 W/kg = -5.51 dBW/kg

Wi-Fi 2.4 GHz

Frequency: 2437 MHz; Duty Cycle: 1:1; Room Ambient Temperature: 24.0°C; Liquid Temperature: 23.0°C

Medium parameters used (interpolated): $f = 2437$ MHz; $\sigma = 1.89$ S/m; $\epsilon_r = 51.185$; $\rho = 1000$ kg/m³

DASY5 Configuration:

- Area Scan Setting: Find Secondary Maximum Within: 2.0 dB and with a peak SAR value greater than 0.0012W/kg
- Electronics: DAE3 Sn427; Calibrated: 1/9/2013
- Probe: EX3DV4 - SN3751; ConvF(6.61, 6.61, 6.61); Calibrated: 11/15/2012;
- Sensor-Surface: 2.5mm (Mechanical Surface Detection)
- Phantom: ELI v5.0 (A); Type: QDOVA001BB; Serial: 1120

Main Ant., Edge 1/802.11b Ch 6/Area Scan (8x11x1): Measurement grid: dx=12mm, dy=12mm

[Info: Interpolated medium parameters used for SAR evaluation.](#)

Maximum value of SAR (measured) = 0.0957 W/kg

Main Ant., Edge 1/802.11b Ch 6/Zoom Scan (7x7x7)/Cube 0: Measurement grid: dx=5mm, dy=5mm, dz=5mm

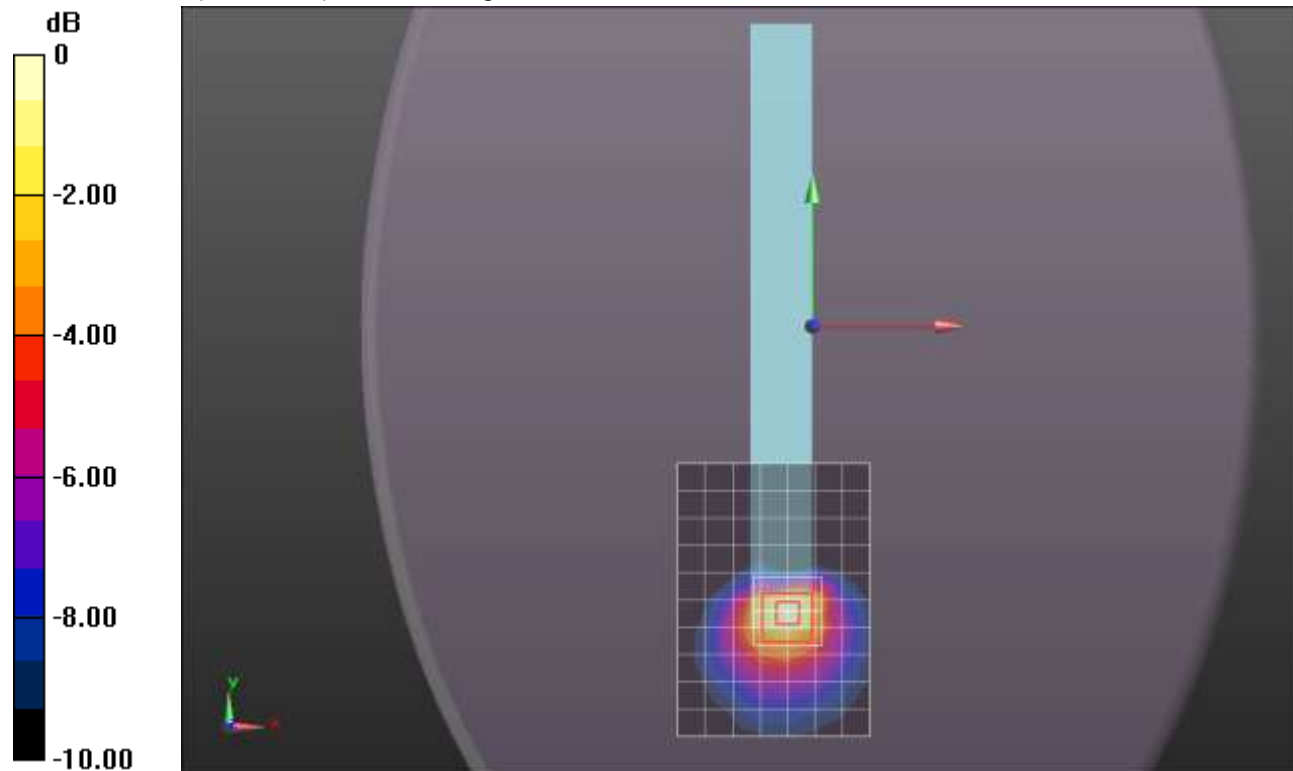
Reference Value = 7.130 V/m; Power Drift = -0.01 dB

Peak SAR (extrapolated) = 0.154 W/kg

SAR(1 g) = 0.081 W/kg; SAR(10 g) = 0.041 W/kg

[Info: Interpolated medium parameters used for SAR evaluation.](#)

Maximum value of SAR (measured) = 0.110 W/kg



0 dB = 0.110 W/kg = -9.59 dBW/kg

Wi-Fi 2.4 GHz

Frequency: 2437 MHz; Duty Cycle: 1:1; Room Ambient Temperature: 24.0°C; Liquid Temperature: 23.0°C

Medium parameters used (interpolated): $f = 2437$ MHz; $\sigma = 1.89$ S/m; $\epsilon_r = 51.185$; $\rho = 1000$ kg/m³

DASY5 Configuration:

- Area Scan Setting: Find Secondary Maximum Within: 2.0 dB and with a peak SAR value greater than 0.0012W/kg
- Electronics: DAE3 Sn427; Calibrated: 1/9/2013
- Probe: EX3DV4 - SN3751; ConvF(6.61, 6.61, 6.61); Calibrated: 11/15/2012;
- Sensor-Surface: 2.5mm (Mechanical Surface Detection (Locations From Previous Scan Used)), Sensor-Surface: 2.5mm (Mechanical Surface Detection)
- Phantom: ELI v5.0 (A); Type: QDOVA001BB; Serial: 1120

Main Ant., Edge 1/802.11g Ch 6/Area Scan (8x11x1): Measurement grid: dx=12mm, dy=12mm

[Info: Interpolated medium parameters used for SAR evaluation.](#)

Maximum value of SAR (measured) = 0.0935 W/kg

Main Ant., Edge 1/802.11g Ch 6/Zoom Scan (7x7x7)/Cube 0: Measurement grid: dx=5mm, dy=5mm, dz=5mm

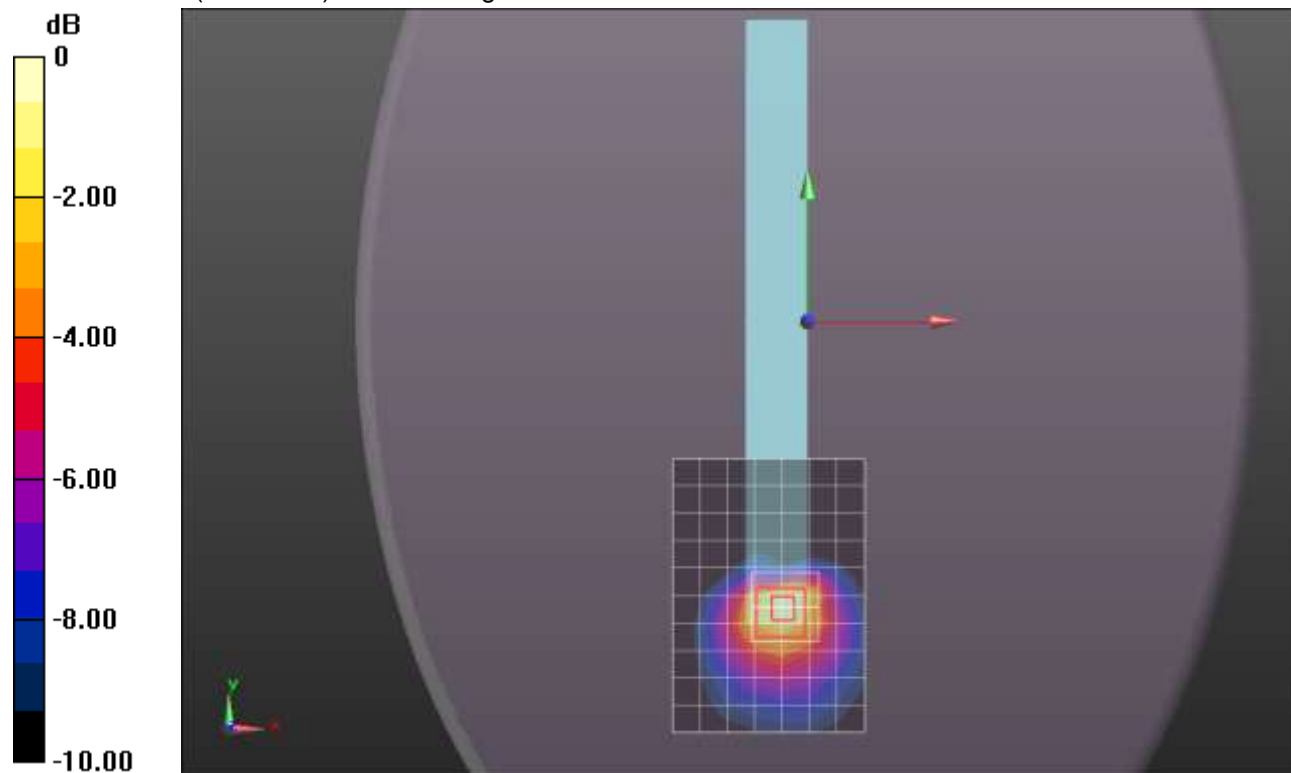
Reference Value = 6.915 V/m; Power Drift = 0.03 dB

Peak SAR (extrapolated) = 0.147 W/kg

SAR(1 g) = 0.078 W/kg; SAR(10 g) = 0.039 W/kg

[Info: Interpolated medium parameters used for SAR evaluation.](#)

Maximum value of SAR (measured) = 0.106 W/kg



0 dB = 0.106 W/kg = -9.75 dBW/kg

Wi-Fi 2.4 GHz

Frequency: 2412 MHz; Duty Cycle: 1:1; Room Ambient Temperature: 24.0°C; Liquid Temperature: 23.0°C

Medium parameters used (interpolated): $f = 2412$ MHz; $\sigma = 1.923$ mho/m; $\epsilon_r = 50.644$; $\rho = 1000$ kg/m³

DASY5 Configuration:

- Area Scan Setting: Find Secondary Maximum Within: 2.0 dB and with a peak SAR value greater than 0.0012W/kg
- Electronics: DAE4 Sn1352; Calibrated: 10/8/2012
- Probe: EX3DV4 - SN3885; ConvF(6.8, 6.8, 6.8); Calibrated: 10/9/2012;
- Sensor-Surface: 2.5mm (Mechanical Surface Detection (Locations From Previous Scan Used)), Sensor-Surface: 2.5mm (Mechanical Surface Detection)
- Phantom: ELI v5.0 (B); Type: QDOVA001BB; Serial: 1118

Main Ant., Edge 4/802.11b Ch 1/Area Scan (8x9x1): Measurement grid: dx=12mm, dy=12mm

[Info: Interpolated medium parameters used for SAR evaluation.](#)

Maximum value of SAR (measured) = 0.873 W/kg

Main Ant., Edge 4/802.11b Ch 1/Zoom Scan (7x7x7)/Cube 0: Measurement grid: dx=5mm, dy=5mm, dz=5mm

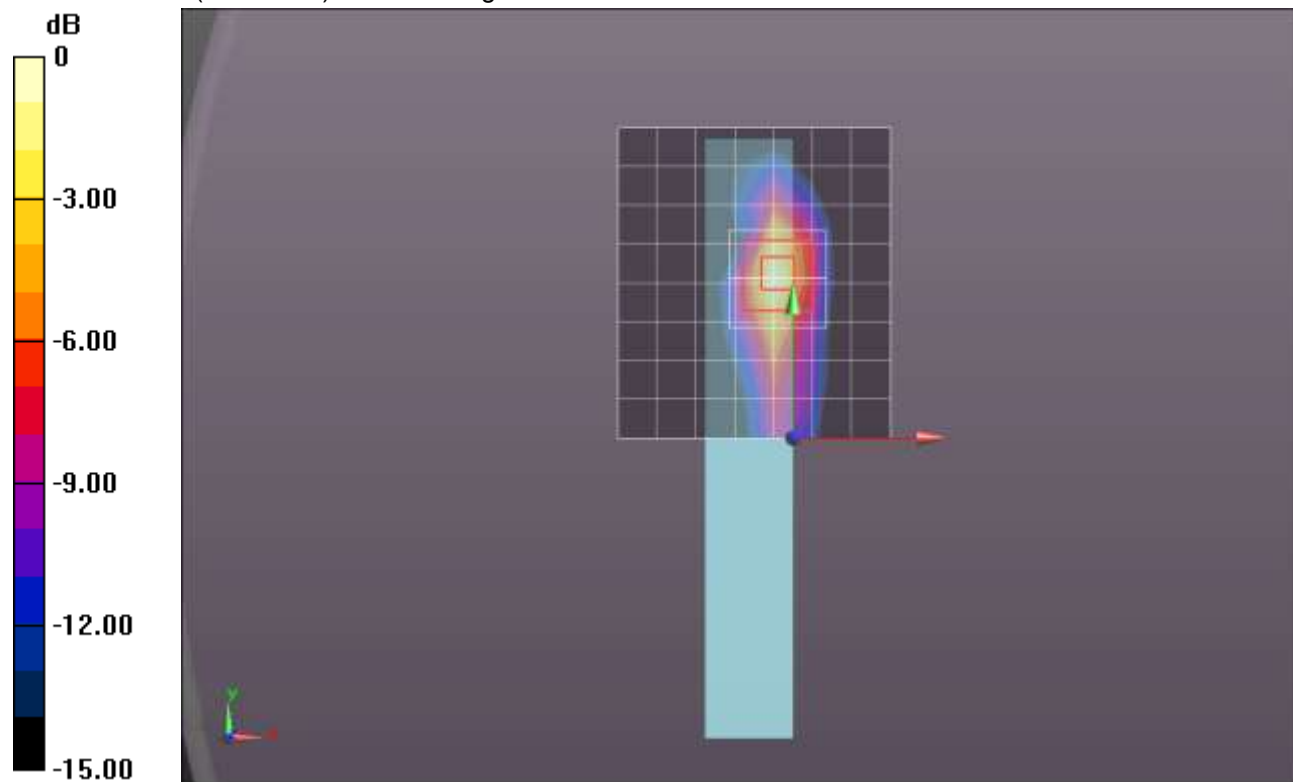
Reference Value = 21.284 V/m; Power Drift = 0.03 dB

Peak SAR (extrapolated) = 1.47 W/kg

SAR(1 g) = 0.598 W/kg; SAR(10 g) = 0.234 W/kg

[Info: Interpolated medium parameters used for SAR evaluation.](#)

Maximum value of SAR (measured) = 0.913 W/kg



0 dB = 0.913 W/kg = -0.40 dBW/kg

Wi-Fi 2.4 GHz

Frequency: 2437 MHz; Duty Cycle: 1:1; Room Ambient Temperature: 24.0°C; Liquid Temperature: 23.0°C

Medium parameters used (interpolated): $f = 2437$ MHz; $\sigma = 1.956$ mho/m; $\epsilon_r = 50.566$; $\rho = 1000$ kg/m³

DASY5 Configuration:

- Area Scan Setting: Find Secondary Maximum Within: 2.0 dB and with a peak SAR value greater than 0.0012W/kg
- Electronics: DAE4 Sn1352; Calibrated: 10/8/2012
- Probe: EX3DV4 - SN3885; ConvF(6.8, 6.8, 6.8); Calibrated: 10/9/2012;
- Sensor-Surface: 2.5mm (Mechanical Surface Detection)
- Phantom: ELI v5.0 (B); Type: QDOVA001BB; Serial: 1118

Main Ant., Edge 4/802.11b Ch 6/Area Scan (8x9x1): Measurement grid: dx=12mm, dy=12mm

[Info: Interpolated medium parameters used for SAR evaluation.](#)

Maximum value of SAR (measured) = 1.58 W/kg

Main Ant., Edge 4/802.11b Ch 6/Zoom Scan (7x7x7)/Cube 0: Measurement grid: dx=5mm, dy=5mm, dz=5mm

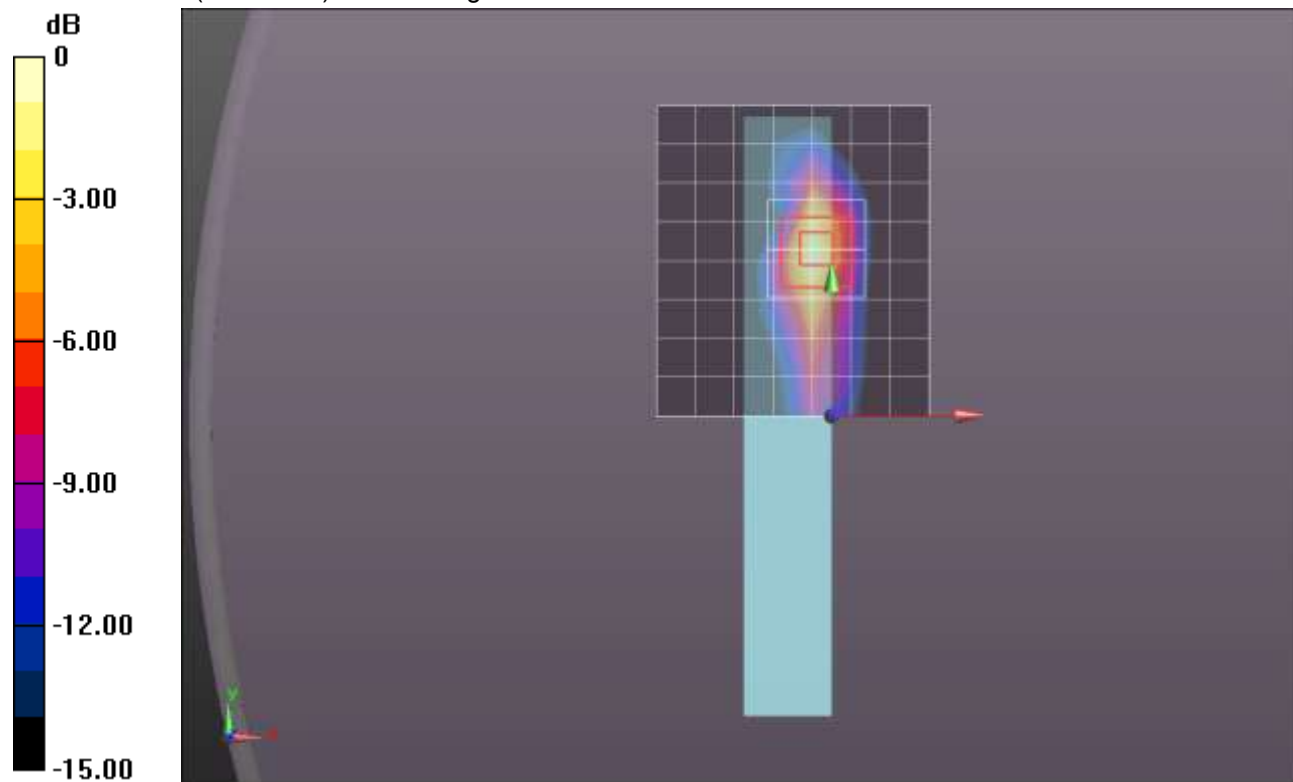
Reference Value = 28.412 V/m; Power Drift = -0.01 dB

Peak SAR (extrapolated) = 2.67 W/kg

SAR(1 g) = 1.08 W/kg; SAR(10 g) = 0.420 W/kg

[Info: Interpolated medium parameters used for SAR evaluation.](#)

Maximum value of SAR (measured) = 1.72 W/kg



0 dB = 1.72 W/kg = 2.36 dBW/kg

Wi-Fi 2.4 GHz

Frequency: 2462 MHz; Duty Cycle: 1:1; Room Ambient Temperature: 24.0°C; Liquid Temperature: 23.0°C
Medium parameters used (interpolated): $f = 2462$ MHz; $\sigma = 1.986$ mho/m; $\epsilon_r = 50.472$; $\rho = 1000$ kg/m³

DASY5 Configuration:

- Area Scan Setting: Find Secondary Maximum Within: 2.0 dB and with a peak SAR value greater than 0.0012W/kg
- Electronics: DAE4 Sn1352; Calibrated: 10/8/2012
- Probe: EX3DV4 - SN3885; ConvF(6.8, 6.8, 6.8); Calibrated: 10/9/2012;
- Sensor-Surface: 2.5mm (Mechanical Surface Detection (Locations From Previous Scan Used)), Sensor-Surface: 2.5mm (Mechanical Surface Detection)
- Phantom: ELI v5.0 (B); Type: QDOVA001BB; Serial: 1118

Main Ant., Edge 4/802.11b Ch 11/Area Scan (8x9x1): Measurement grid: dx=12mm, dy=12mm

[Info: Interpolated medium parameters used for SAR evaluation.](#)

Maximum value of SAR (measured) = 0.706 W/kg

Main Ant., Edge 4/802.11b Ch 11/Zoom Scan (7x7x7)/Cube 0: Measurement grid: dx=5mm, dy=5mm, dz=5mm

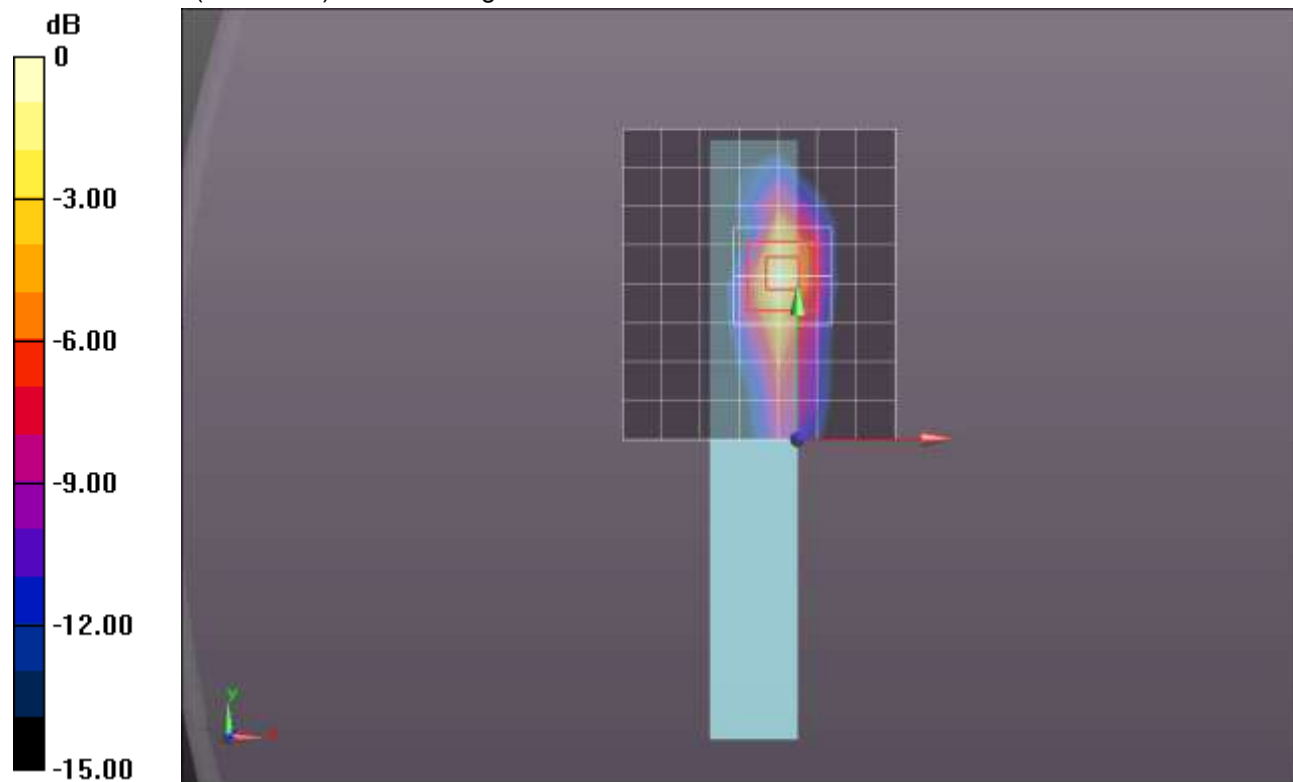
Reference Value = 18.911 V/m; Power Drift = 0.04 dB

Peak SAR (extrapolated) = 1.11 W/kg

SAR(1 g) = 0.461 W/kg; SAR(10 g) = 0.177 W/kg

[Info: Interpolated medium parameters used for SAR evaluation.](#)

Maximum value of SAR (measured) = 0.730 W/kg



0 dB = 0.730 W/kg = -1.37 dBW/kg

Wi-Fi 2.4 GHz

Frequency: 2412 MHz; Duty Cycle: 1:1; Room Ambient Temperature: 24.0°C; Liquid Temperature: 23.0°C

Medium parameters used (interpolated): $f = 2412$ MHz; $\sigma = 1.923$ mho/m; $\epsilon_r = 50.644$; $\rho = 1000$ kg/m³

DASY5 Configuration:

- Area Scan Setting: Find Secondary Maximum Within: 2.0 dB and with a peak SAR value greater than 0.0012W/kg
- Electronics: DAE4 Sn1352; Calibrated: 10/8/2012
- Probe: EX3DV4 - SN3885; ConvF(6.8, 6.8, 6.8); Calibrated: 10/9/2012;
- Sensor-Surface: 2.5mm (Mechanical Surface Detection (Locations From Previous Scan Used)), Sensor-Surface: 2.5mm (Mechanical Surface Detection)
- Phantom: ELI v5.0 (B); Type: QDOVA001BB; Serial: 1118

Main Ant., Edge 4/802.11g Ch 1/Area Scan (8x9x1): Measurement grid: dx=12mm, dy=12mm

[Info: Interpolated medium parameters used for SAR evaluation.](#)

Maximum value of SAR (measured) = 0.845 W/kg

Main Ant., Edge 4/802.11g Ch 1/Zoom Scan (7x7x7)/Cube 0: Measurement grid: dx=5mm, dy=5mm, dz=5mm

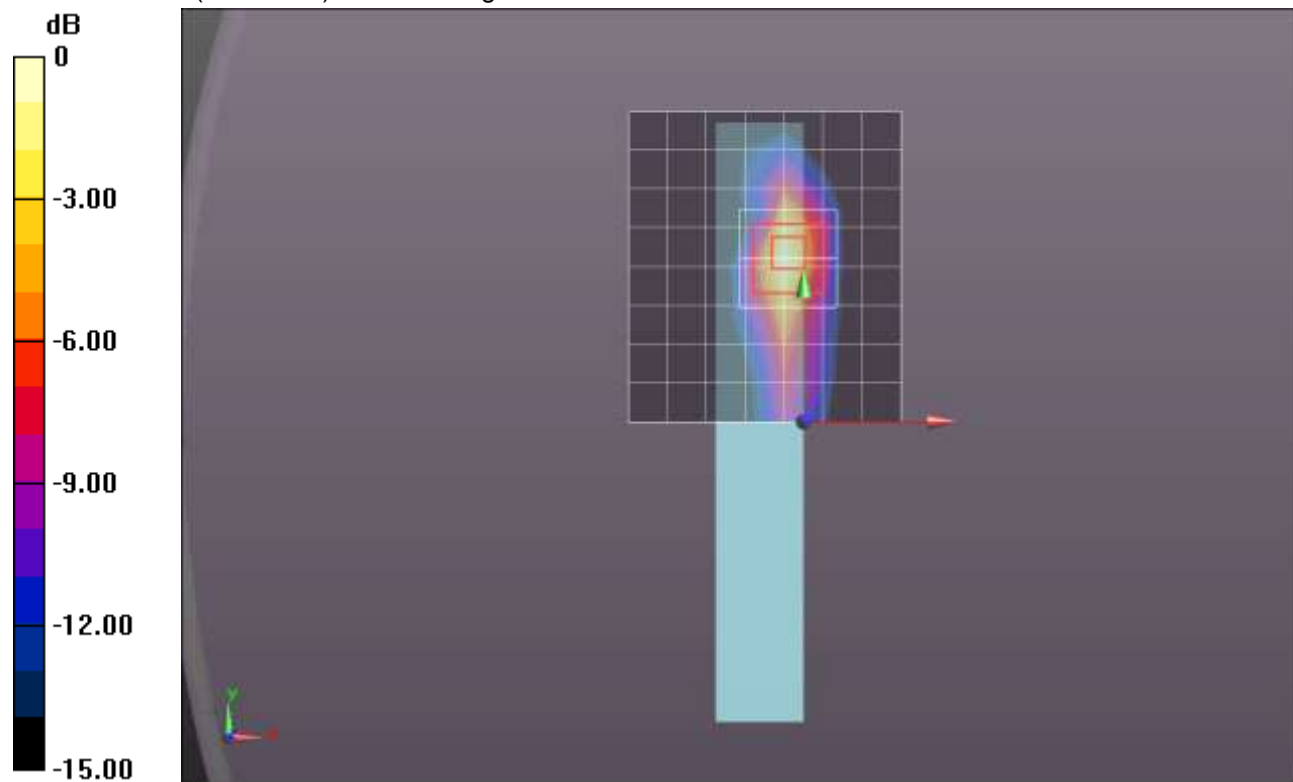
Reference Value = 20.989 V/m; Power Drift = 0.01 dB

Peak SAR (extrapolated) = 1.44 W/kg

SAR(1 g) = 0.585 W/kg; SAR(10 g) = 0.228 W/kg

[Info: Interpolated medium parameters used for SAR evaluation.](#)

Maximum value of SAR (measured) = 0.909 W/kg



0 dB = 0.909 W/kg = -0.41 dBW/kg

Wi-Fi 2.4 GHz

Frequency: 2437 MHz; Duty Cycle: 1:1; Room Ambient Temperature: 24.0°C; Liquid Temperature: 23.0°C
Medium parameters used (interpolated): $f = 2437$ MHz; $\sigma = 1.956$ mho/m; $\epsilon_r = 50.566$; $\rho = 1000$ kg/m³

DASY5 Configuration:

- Area Scan Setting: Find Secondary Maximum Within: 2.0 dB and with a peak SAR value greater than 0.0012W/kg
- Electronics: DAE4 Sn1352; Calibrated: 10/8/2012
- Probe: EX3DV4 - SN3885; ConvF(6.8, 6.8, 6.8); Calibrated: 10/9/2012;
- Sensor-Surface: 2.5mm (Mechanical Surface Detection (Locations From Previous Scan Used)), Sensor-Surface: 2.5mm (Mechanical Surface Detection)
- Phantom: ELI v5.0 (B); Type: QDOVA001BB; Serial: 1118

Main Ant., Edge 4/802.11g Ch 6/Area Scan (8x9x1): Measurement grid: dx=12mm, dy=12mm

[Info: Interpolated medium parameters used for SAR evaluation.](#)

Maximum value of SAR (measured) = 1.48 W/kg

Main Ant., Edge 4/802.11g Ch 6/Zoom Scan (7x7x7)/Cube 0: Measurement grid: dx=5mm, dy=5mm, dz=5mm

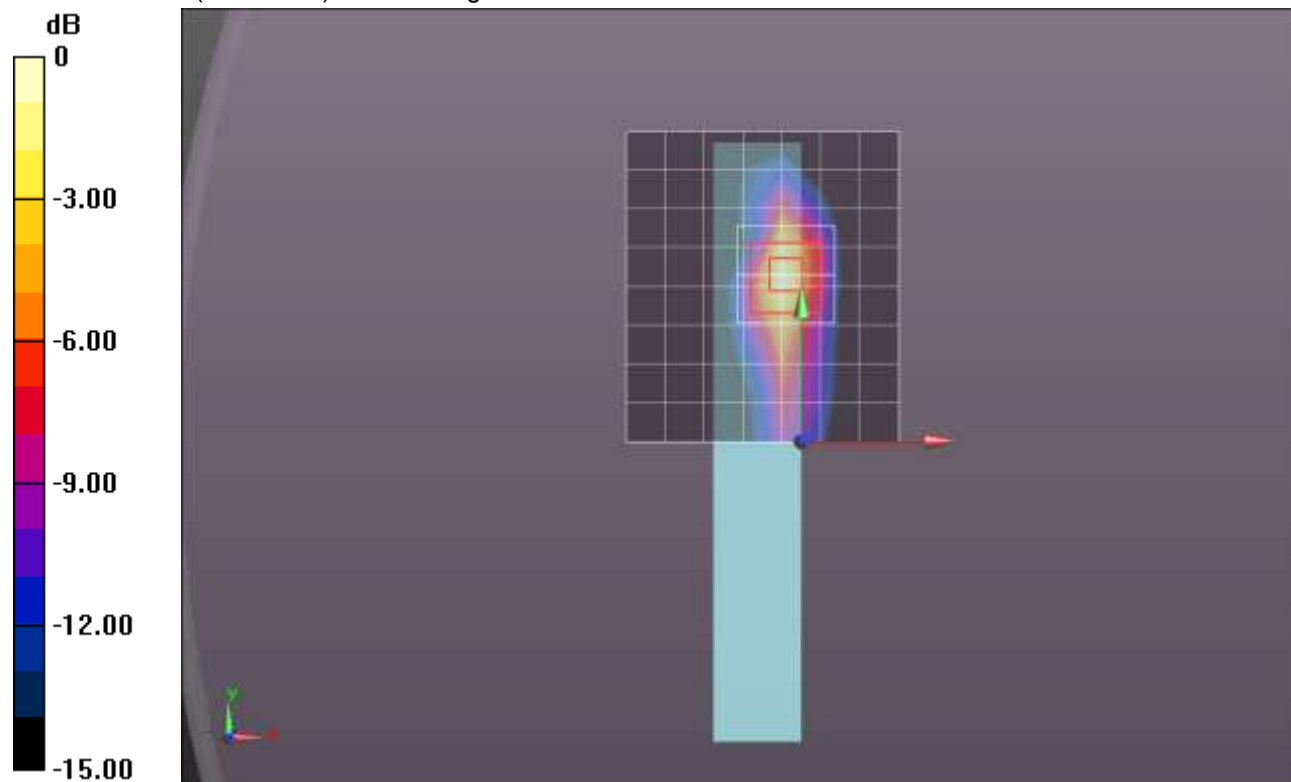
Reference Value = 27.589 V/m; Power Drift = 0.01 dB

Peak SAR (extrapolated) = 2.53 W/kg

SAR(1 g) = 1.02 W/kg; SAR(10 g) = 0.396 W/kg

[Info: Interpolated medium parameters used for SAR evaluation.](#)

Maximum value of SAR (measured) = 1.63 W/kg



0 dB = 1.63 W/kg = 2.12 dBW/kg

Wi-Fi 2.4 GHz

Frequency: 2462 MHz; Duty Cycle: 1:1; Room Ambient Temperature: 24.0°C; Liquid Temperature: 23.0°C
Medium parameters used (interpolated): $f = 2462$ MHz; $\sigma = 1.986$ mho/m; $\epsilon_r = 50.472$; $\rho = 1000$ kg/m³

DASY5 Configuration:

- Area Scan Setting: Find Secondary Maximum Within: 2.0 dB and with a peak SAR value greater than 0.0012W/kg
- Electronics: DAE4 Sn1352; Calibrated: 10/8/2012
- Probe: EX3DV4 - SN3885; ConvF(6.8, 6.8, 6.8); Calibrated: 10/9/2012;
- Sensor-Surface: 2.5mm (Mechanical Surface Detection (Locations From Previous Scan Used)), Sensor-Surface: 2.5mm (Mechanical Surface Detection)
- Phantom: ELI v5.0 (B); Type: QDOVA001BB; Serial: 1118

Main Ant., Edge 4/802.11g Ch 11/Area Scan (8x9x1): Measurement grid: dx=12mm, dy=12mm

[Info: Interpolated medium parameters used for SAR evaluation.](#)

Maximum value of SAR (measured) = 0.693 W/kg

Main Ant., Edge 4/802.11g Ch 11/Zoom Scan (7x7x7)/Cube 0: Measurement grid: dx=5mm, dy=5mm, dz=5mm

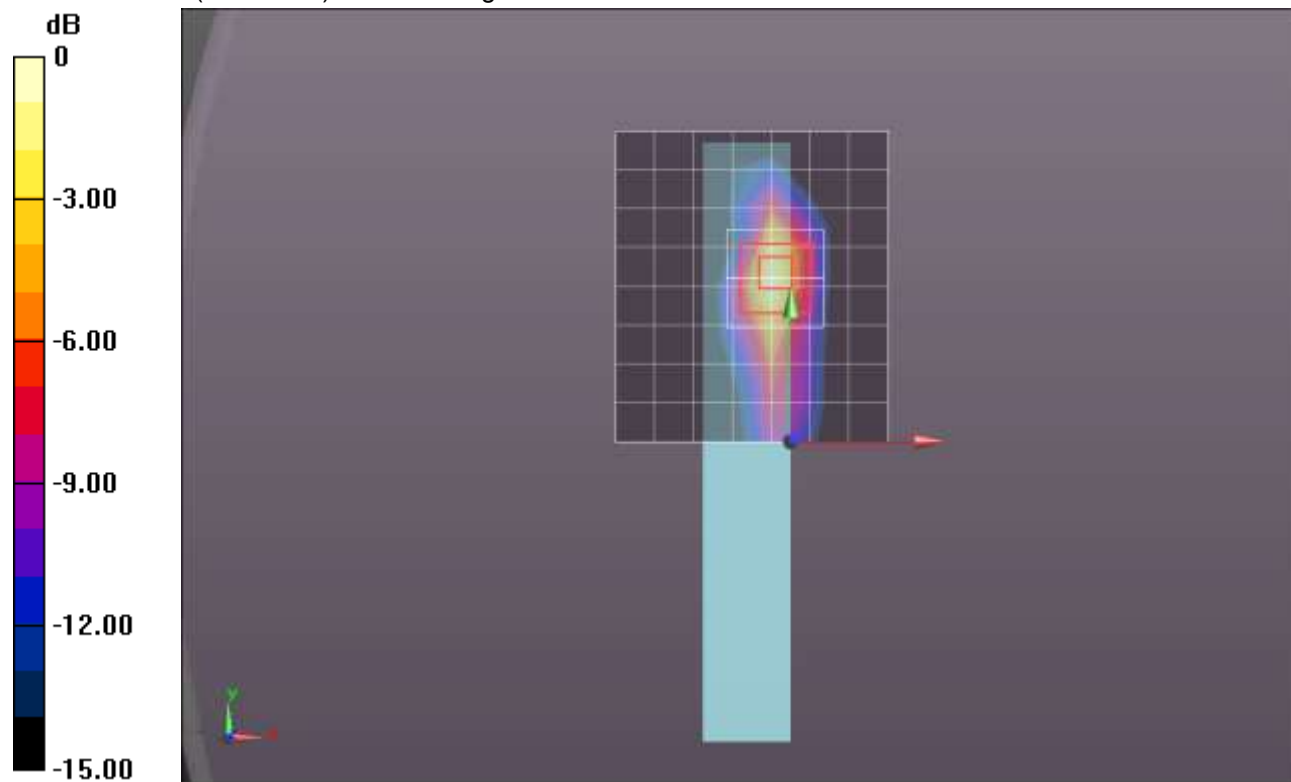
Reference Value = 18.818 V/m; Power Drift = 0.02 dB

Peak SAR (extrapolated) = 1.19 W/kg

SAR(1 g) = 0.479 W/kg; SAR(10 g) = 0.185 W/kg

[Info: Interpolated medium parameters used for SAR evaluation.](#)

Maximum value of SAR (measured) = 0.748 W/kg



0 dB = 0.748 W/kg = -1.26 dBW/kg

Wi-Fi 2.4 GHz

Frequency: 2437 MHz; Duty Cycle: 1:1; Room Ambient Temperature: 24.0°C; Liquid Temperature: 23.0°C
Medium parameters used (interpolated): $f = 2437$ MHz; $\sigma = 1.988$ S/m; $\epsilon_r = 50.908$; $\rho = 1000$ kg/m³

DASY5 Configuration:

- Area Scan Setting: Find Secondary Maximum Within: 2.0 dB and with a peak SAR value greater than 0.0012W/kg
- Electronics: DAE4 Sn1343; Calibrated: 8/20/2012
- Probe: EX3DV4 - SN3871; ConvF(7.44, 7.44, 7.44); Calibrated: 8/20/2012;
- Sensor-Surface: 2mm (Mechanical Surface Detection)
- Phantom: ELI v5.0 B; Type: QDOVA002AA; Serial: 1180

Aux Ant., Rear/802.11b Ch 6/Area Scan (8x11x1): Measurement grid: dx=10mm, dy=10mm

[Info: Interpolated medium parameters used for SAR evaluation.](#)

Maximum value of SAR (measured) = 0.0610 W/kg

Aux Ant., Rear/802.11b Ch 6/Zoom Scan (7x7x12)/Cube 0: Measurement grid: dx=4mm, dy=4mm, dz=2mm

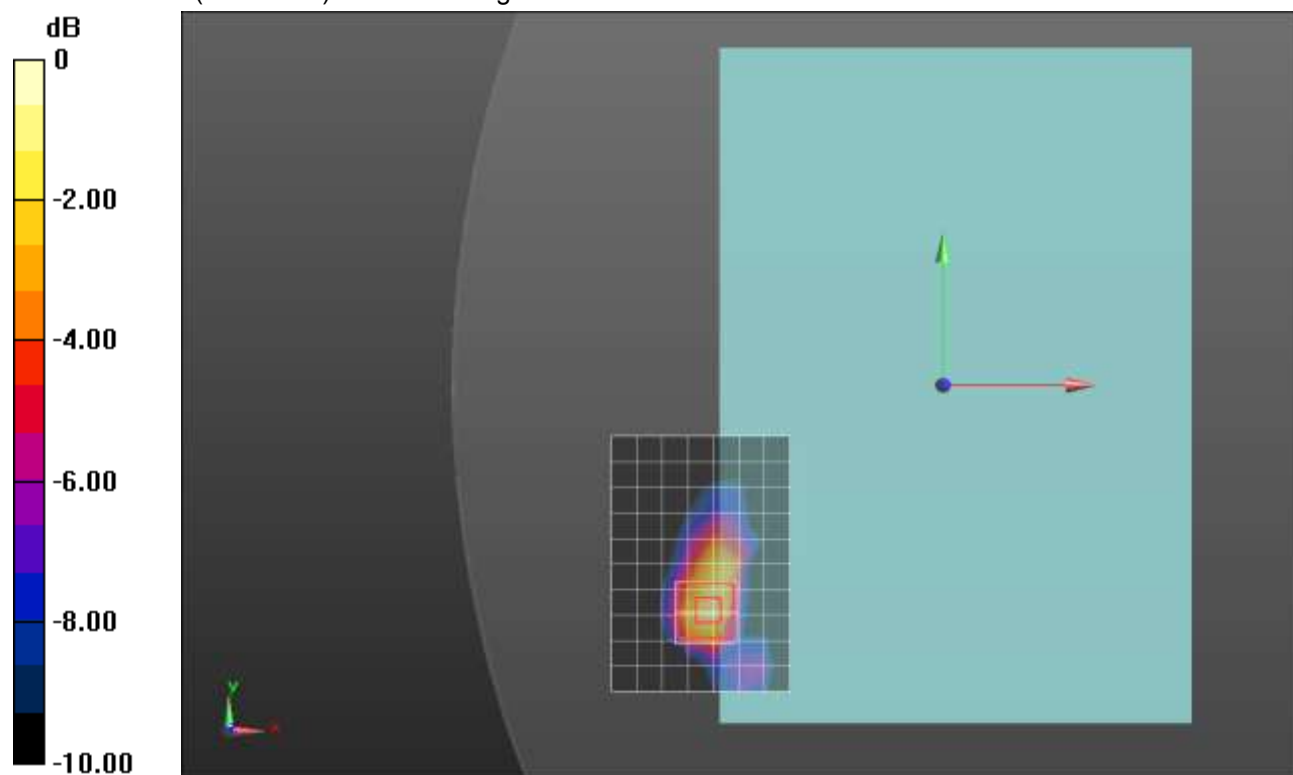
Reference Value = 5.323 V/m; Power Drift = 0.11 dB

Peak SAR (extrapolated) = 0.0850 W/kg

SAR(1 g) = 0.040 W/kg; SAR(10 g) = 0.015 W/kg

[Info: Interpolated medium parameters used for SAR evaluation.](#)

Maximum value of SAR (measured) = 0.0636 W/kg



0 dB = 0.0636 W/kg = -11.97 dBW/kg

Wi-Fi 2.4 GHz

Frequency: 2437 MHz; Duty Cycle: 1:1; Room Ambient Temperature: 24.0°C; Liquid Temperature: 23.0°C
Medium parameters used (interpolated): $f = 2437$ MHz; $\sigma = 1.988$ S/m; $\epsilon_r = 50.908$; $\rho = 1000$ kg/m³

DASY5 Configuration:

- Area Scan Setting: Find Secondary Maximum Within: 2.0 dB and with a peak SAR value greater than 0.0012W/kg
- Electronics: DAE4 Sn1343; Calibrated: 8/20/2012
- Probe: EX3DV4 - SN3871; ConvF(7.44, 7.44, 7.44); Calibrated: 8/20/2012;
- Sensor-Surface: 2mm (Mechanical Surface Detection (Locations From Previous Scan Used)), Sensor-Surface: 2mm (Mechanical Surface Detection)
- Phantom: ELI v5.0 B; Type: QDOVA002AA; Serial: 1180

Aux Ant., Rear/802.11g Ch 6/Area Scan (8x11x1): Measurement grid: dx=10mm, dy=10mm

[Info: Interpolated medium parameters used for SAR evaluation.](#)

Maximum value of SAR (measured) = 0.0874 W/kg

Aux Ant., Rear/802.11g Ch 6/Zoom Scan (7x7x12)/Cube 0: Measurement grid: dx=4mm, dy=4mm, dz=2mm

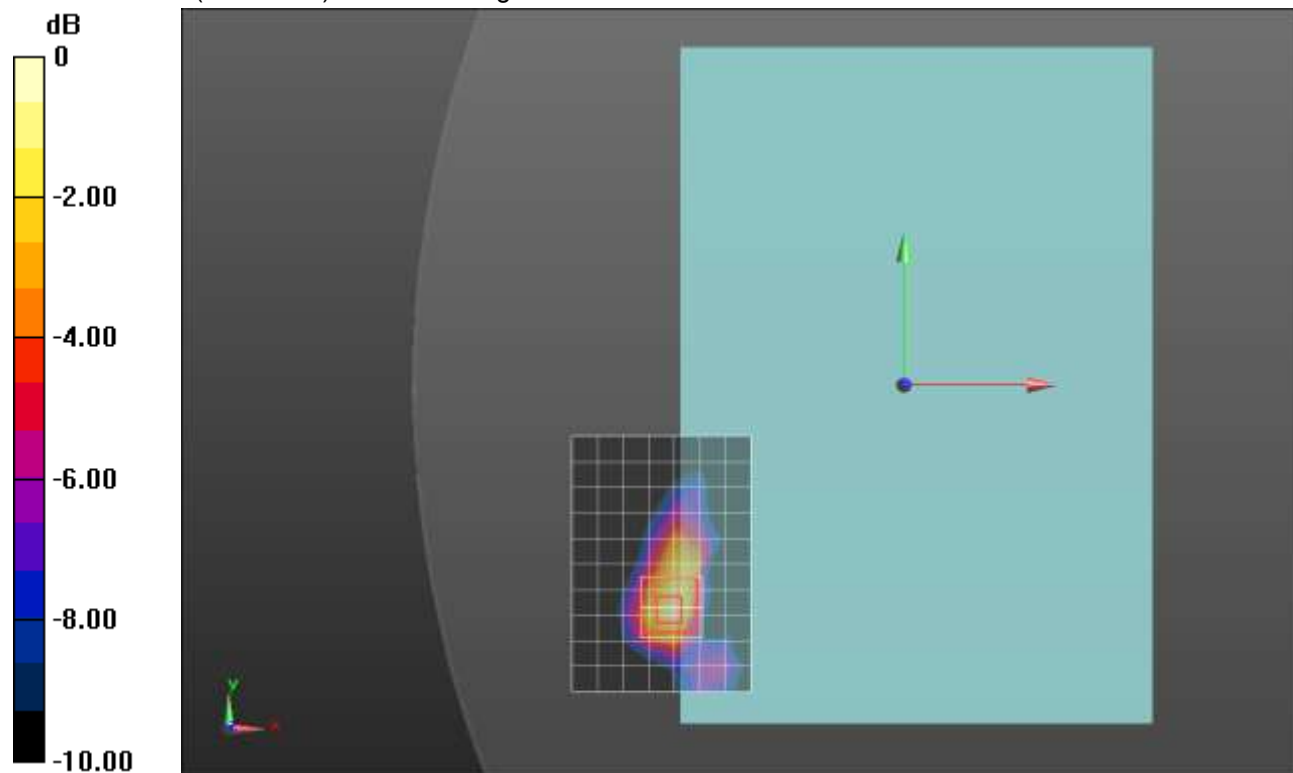
Reference Value = 6.356 V/m; Power Drift = 0.05 dB

Peak SAR (extrapolated) = 0.126 W/kg

SAR(1 g) = 0.057 W/kg; SAR(10 g) = 0.023 W/kg

[Info: Interpolated medium parameters used for SAR evaluation.](#)

Maximum value of SAR (measured) = 0.0881 W/kg



0 dB = 0.0881 W/kg = -10.55 dBW/kg

Wi-Fi 2.4 GHz

Frequency: 2437 MHz; Duty Cycle: 1:1; Room Ambient Temperature: 24.0°C; Liquid Temperature: 23.0°C

Medium parameters used (interpolated): $f = 2437$ MHz; $\sigma = 1.956$ mho/m; $\epsilon_r = 50.566$; $\rho = 1000$ kg/m³

DASY5 Configuration:

- Area Scan Setting: Find Secondary Maximum Within: 2.0 dB and with a peak SAR value greater than 0.0012W/kg
- Electronics: DAE4 Sn1352; Calibrated: 10/8/2012
- Probe: EX3DV4 - SN3885; ConvF(6.8, 6.8, 6.8); Calibrated: 10/9/2012;
- Sensor-Surface: 2.5mm (Mechanical Surface Detection (Locations From Previous Scan Used)), Sensor-Surface: 2.5mm (Mechanical Surface Detection)
- Phantom: ELI v5.0 (B); Type: QDOVA001BB; Serial: 1118

Aux Ant., Edge 3/802.11b Ch 6/Area Scan (8x9x1): Measurement grid: dx=12mm, dy=12mm

[Info: Interpolated medium parameters used for SAR evaluation.](#)

Maximum value of SAR (measured) = 0.400 W/kg

Aux Ant., Edge 3/802.11b Ch 6/Zoom Scan (7x7x7)/Cube 0: Measurement grid: dx=5mm, dy=5mm, dz=5mm

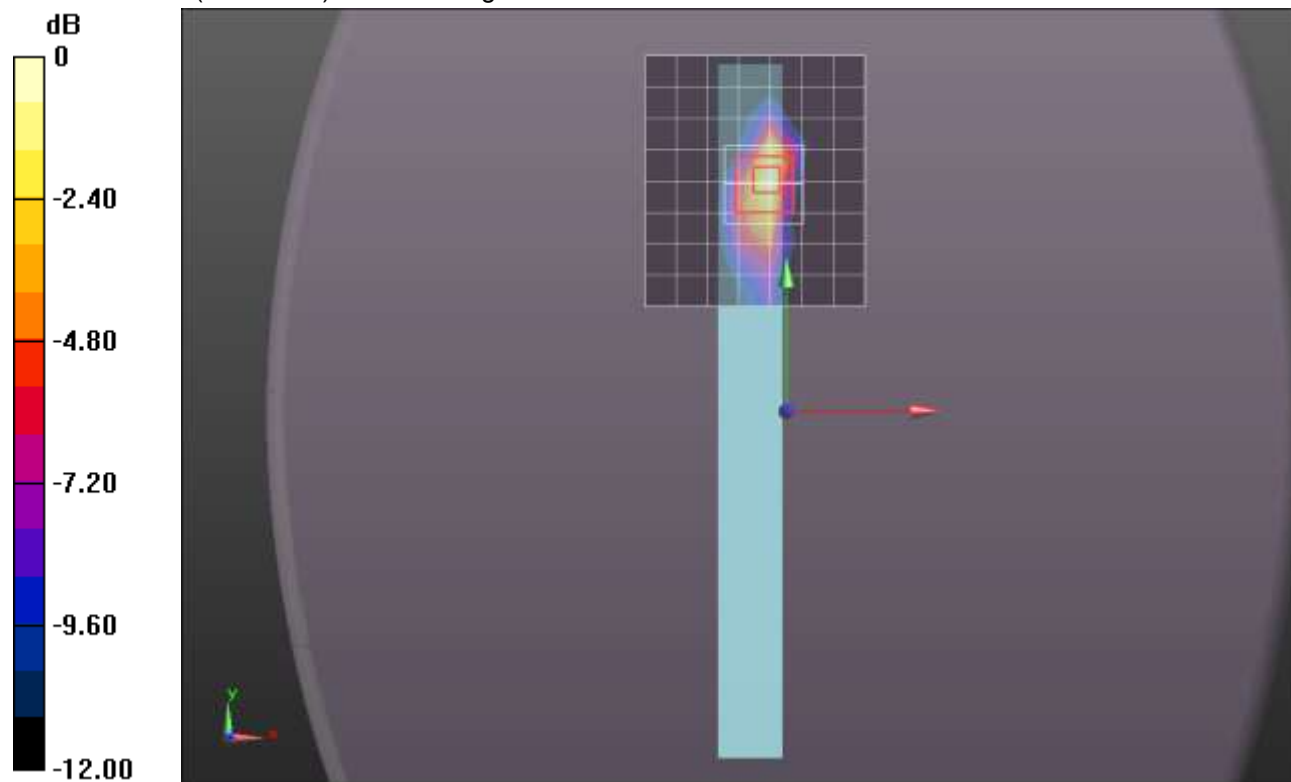
Reference Value = 14.479 V/m; Power Drift = 0.05 dB

Peak SAR (extrapolated) = 0.652 W/kg

SAR(1 g) = 0.280 W/kg; SAR(10 g) = 0.117 W/kg

[Info: Interpolated medium parameters used for SAR evaluation.](#)

Maximum value of SAR (measured) = 0.415 W/kg



0 dB = 0.415 W/kg = -3.82 dBW/kg

Wi-Fi 2.4 GHz

Frequency: 2437 MHz; Duty Cycle: 1:1; Room Ambient Temperature: 24.0°C; Liquid Temperature: 23.0°C
Medium parameters used (interpolated): $f = 2437$ MHz; $\sigma = 1.956$ mho/m; $\epsilon_r = 50.566$; $\rho = 1000$ kg/m³

DASY5 Configuration:

- Area Scan Setting: Find Secondary Maximum Within: 2.0 dB and with a peak SAR value greater than 0.0012W/kg
- Electronics: DAE4 Sn1352; Calibrated: 10/8/2012
- Probe: EX3DV4 - SN3885; ConvF(6.8, 6.8, 6.8); Calibrated: 10/9/2012;
- Sensor-Surface: 2.5mm (Mechanical Surface Detection (Locations From Previous Scan Used)), Sensor-Surface: 2.5mm (Mechanical Surface Detection)
- Phantom: ELI v5.0 (B); Type: QDOVA001BB; Serial: 1118

Aux Ant., Edge 3/802.11g Ch 6/Area Scan (8x9x1): Measurement grid: dx=12mm, dy=12mm

[Info: Interpolated medium parameters used for SAR evaluation.](#)

Maximum value of SAR (measured) = 0.547 W/kg

Aux Ant., Edge 3/802.11g Ch 6/Zoom Scan (7x7x7)/Cube 0: Measurement grid: dx=5mm, dy=5mm, dz=5mm

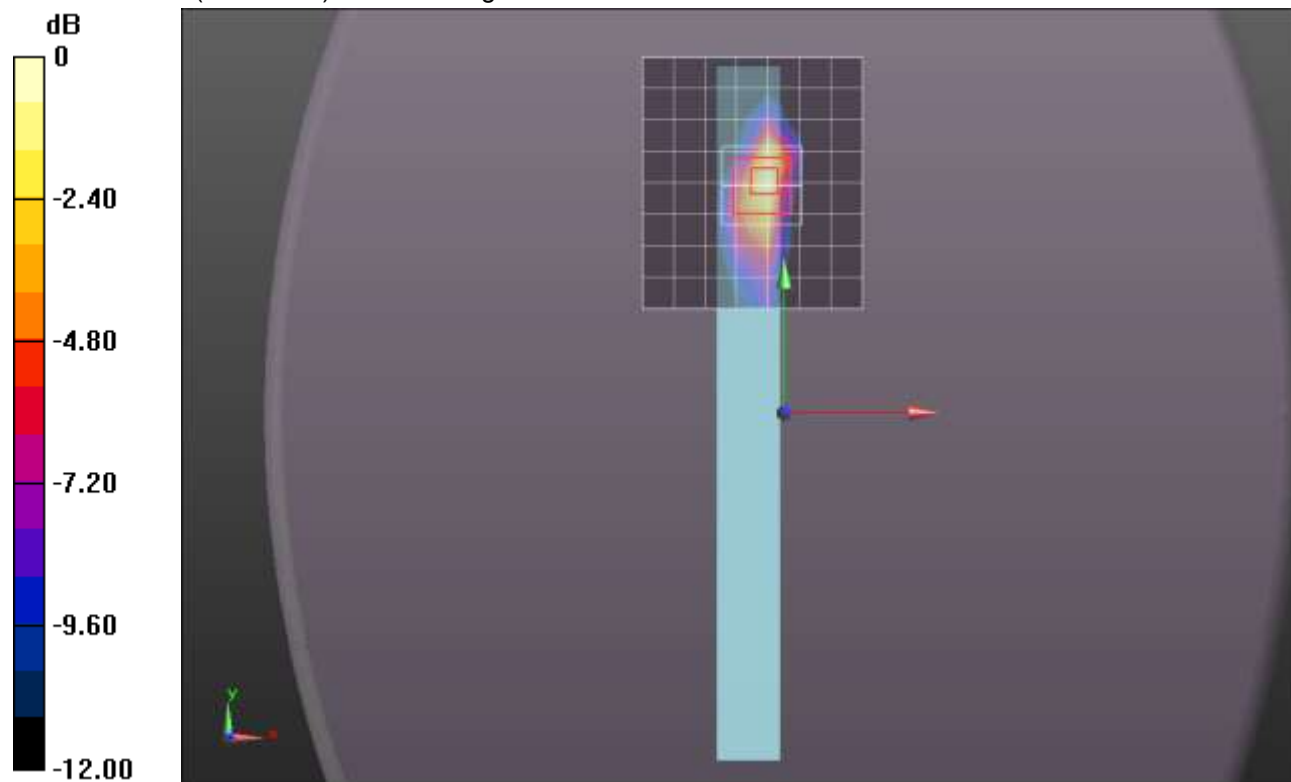
Reference Value = 16.970 V/m; Power Drift = -0.01 dB

Peak SAR (extrapolated) = 0.881 W/kg

SAR(1 g) = 0.381 W/kg; SAR(10 g) = 0.158 W/kg

[Info: Interpolated medium parameters used for SAR evaluation.](#)

Maximum value of SAR (measured) = 0.565 W/kg



0 dB = 0.565 W/kg = -2.48 dBW/kg

Wi-Fi 2.4 GHz

Frequency: 2437 MHz; Duty Cycle: 1:1; Room Ambient Temperature: 24.0°C; Liquid Temperature: 23.0°C

Medium parameters used (interpolated): $f = 2437$ MHz; $\sigma = 1.89$ S/m; $\epsilon_r = 51.185$; $\rho = 1000$ kg/m³

DASY5 Configuration:

- Area Scan Setting: Find Secondary Maximum Within: 2.0 dB and with a peak SAR value greater than 0.0012W/kg
- Electronics: DAE3 Sn427; Calibrated: 1/9/2013
- Probe: EX3DV4 - SN3751; ConvF(6.61, 6.61, 6.61); Calibrated: 11/15/2012;
- Sensor-Surface: 2.5mm (Mechanical Surface Detection (Locations From Previous Scan Used)), Sensor-Surface: 2.5mm (Mechanical Surface Detection)
- Phantom: ELI v5.0 (A); Type: QDOVA001BB; Serial: 1120

Aux Ant., Edge 4/802.11b Ch 6/Area Scan (8x11x1): Measurement grid: dx=12mm, dy=12mm

[Info: Interpolated medium parameters used for SAR evaluation.](#)

Maximum value of SAR (measured) = 0.106 W/kg

Aux Ant., Edge 4/802.11b Ch 6/Zoom Scan (7x7x7)/Cube 0: Measurement grid: dx=5mm, dy=5mm, dz=5mm

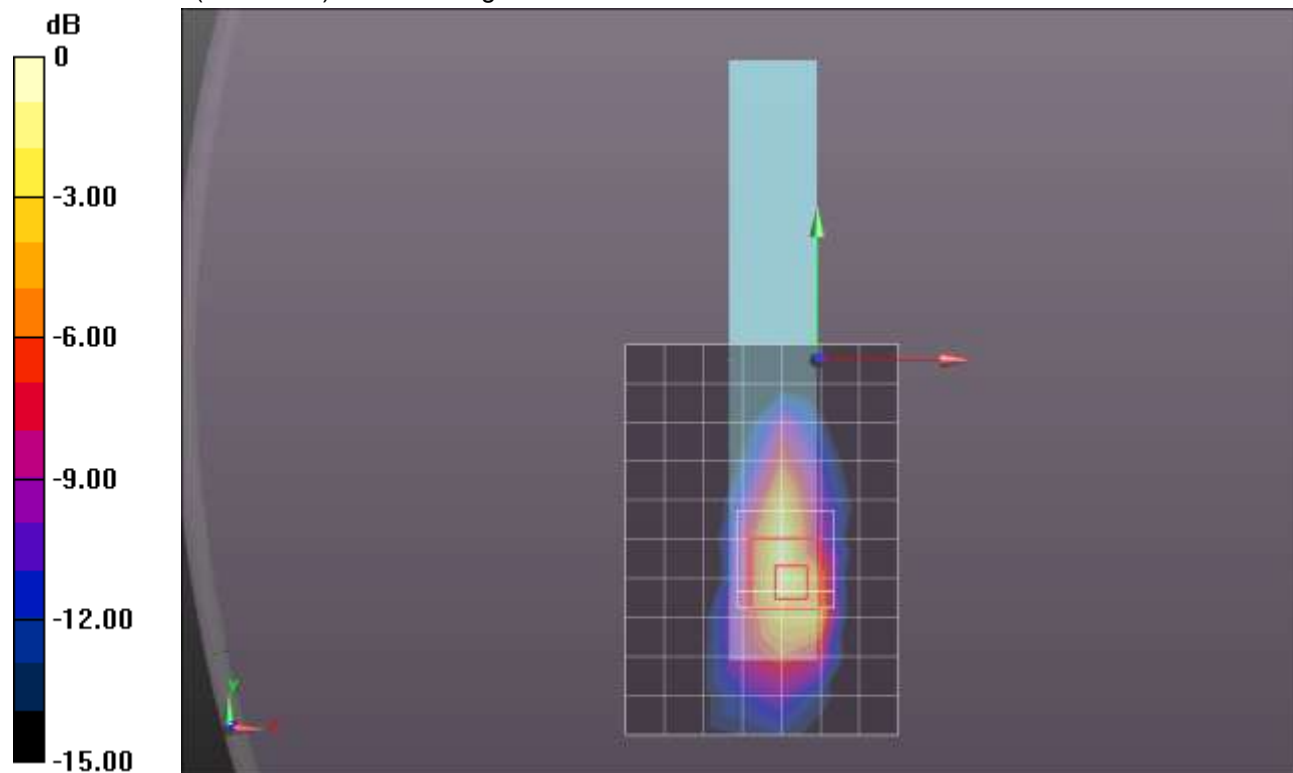
Reference Value = 7.685 V/m; Power Drift = -0.18 dB

Peak SAR (extrapolated) = 0.217 W/kg

SAR(1 g) = 0.086 W/kg; SAR(10 g) = 0.037 W/kg

[Info: Interpolated medium parameters used for SAR evaluation.](#)

Maximum value of SAR (measured) = 0.131 W/kg



0 dB = 0.131 W/kg = -8.83 dBW/kg

Wi-Fi 2.4 GHz

Frequency: 2437 MHz; Duty Cycle: 1:1; Room Ambient Temperature: 24.0°C; Liquid Temperature: 23.0°C
Medium parameters used (interpolated): $f = 2437$ MHz; $\sigma = 1.89$ S/m; $\epsilon_r = 51.185$; $\rho = 1000$ kg/m³

DASY5 Configuration:

- Area Scan Setting: Find Secondary Maximum Within: 2.0 dB and with a peak SAR value greater than 0.0012W/kg
- Electronics: DAE3 Sn427; Calibrated: 1/9/2013
- Probe: EX3DV4 - SN3751; ConvF(6.61, 6.61, 6.61); Calibrated: 11/15/2012;
- Sensor-Surface: 2.5mm (Mechanical Surface Detection (Locations From Previous Scan Used)), Sensor-Surface: 2.5mm (Mechanical Surface Detection)
- Phantom: ELI v5.0 (A); Type: QDOVA001BB; Serial: 1120

Aux Ant., Edge 4/802.11g Ch 6/Area Scan (8x11x1): Measurement grid: dx=12mm, dy=12mm

[Info: Interpolated medium parameters used for SAR evaluation.](#)

Maximum value of SAR (measured) = 0.144 W/kg

Aux Ant., Edge 4/802.11g Ch 6/Zoom Scan (7x7x7)/Cube 0: Measurement grid: dx=5mm, dy=5mm, dz=5mm

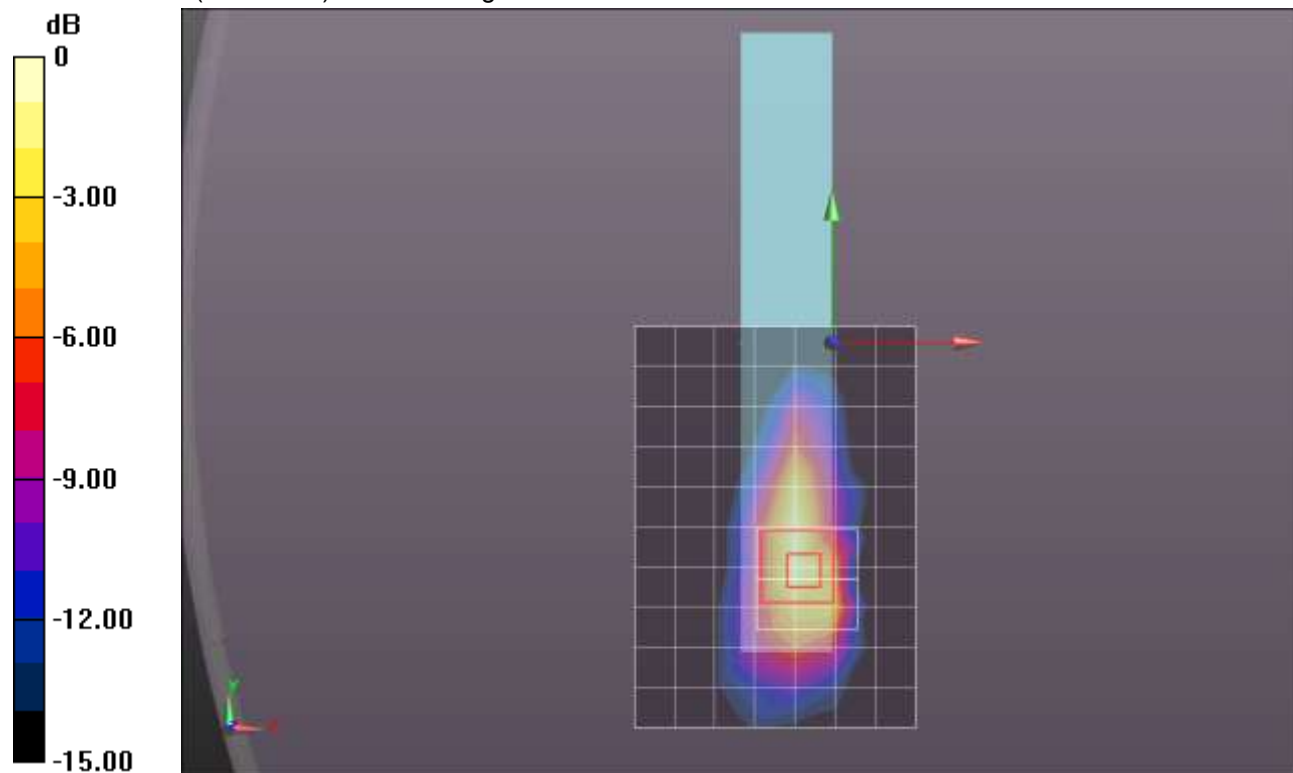
Reference Value = 8.852 V/m; Power Drift = -0.05 dB

Peak SAR (extrapolated) = 0.273 W/kg

SAR(1 g) = 0.115 W/kg; SAR(10 g) = 0.050 W/kg

[Info: Interpolated medium parameters used for SAR evaluation.](#)

Maximum value of SAR (measured) = 0.169 W/kg



0 dB = 0.169 W/kg = -7.72 dBW/kg