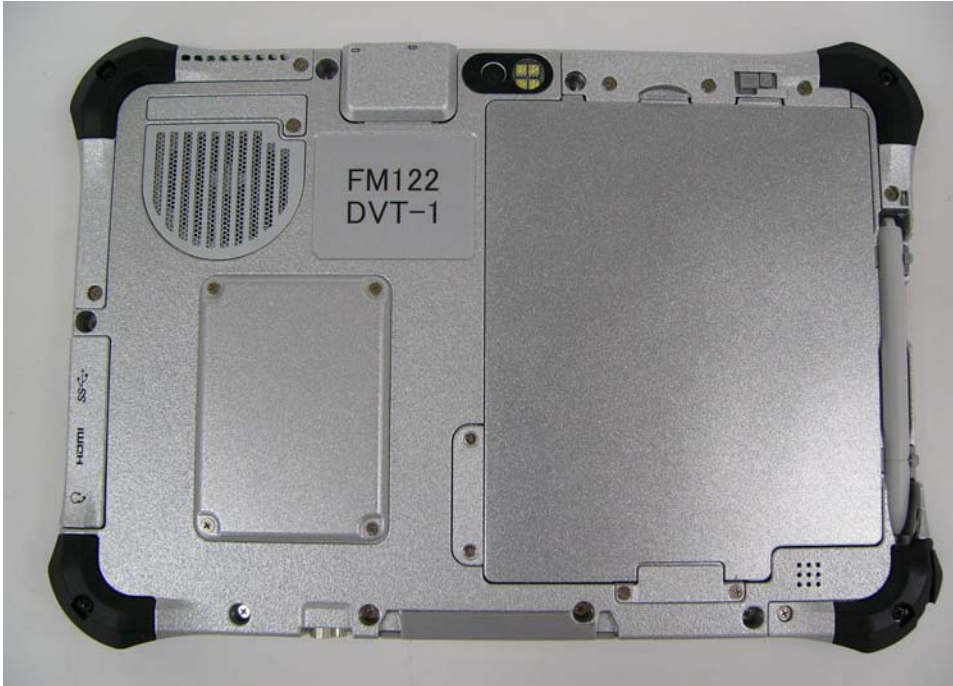
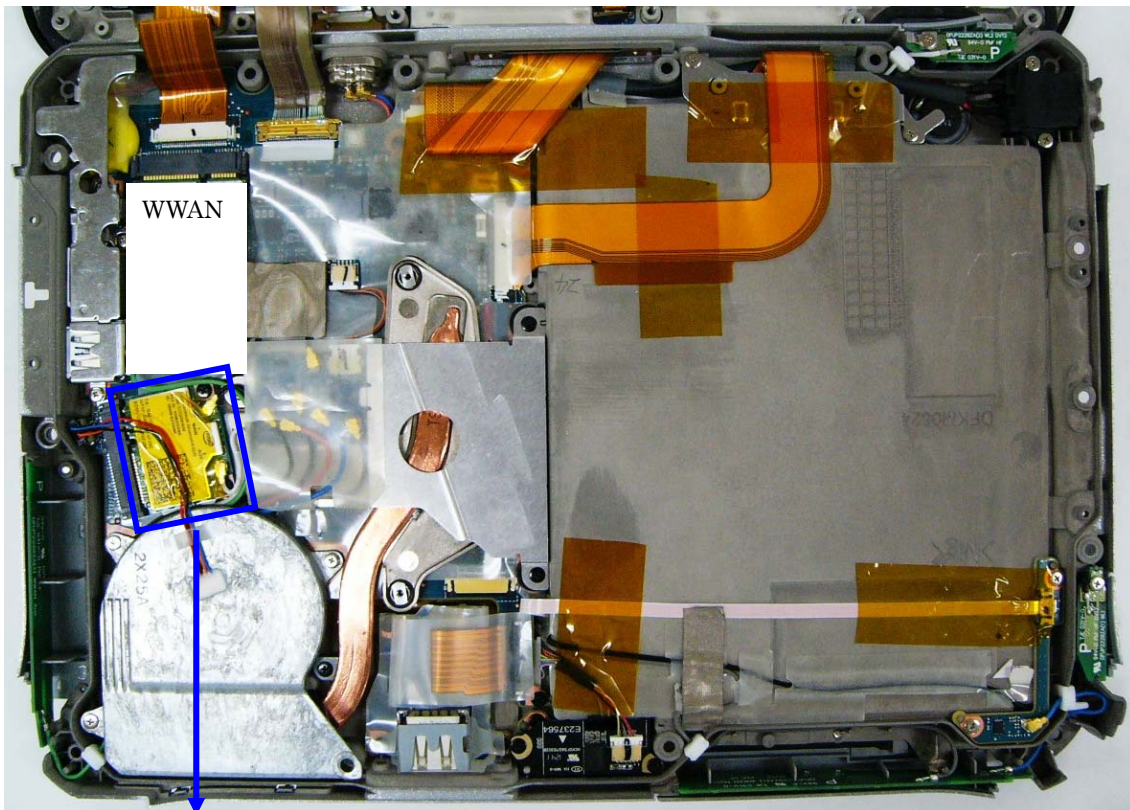


1) Module location



Open the bottom panel



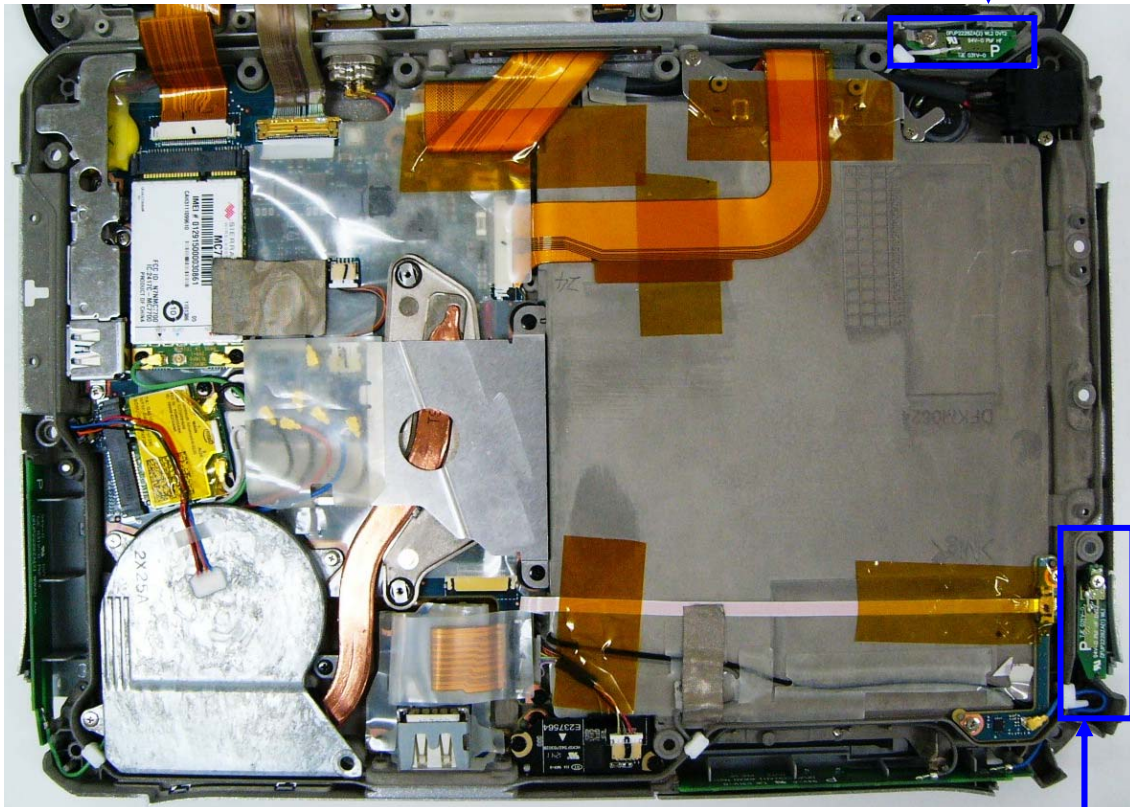
WLAN/Bluetooth module  
FCC ID: ACJ9TGWL12A  
IC: 216A-CFWL12A

2) Antenna Location



WLAN #1  
WLAN Main Antenna

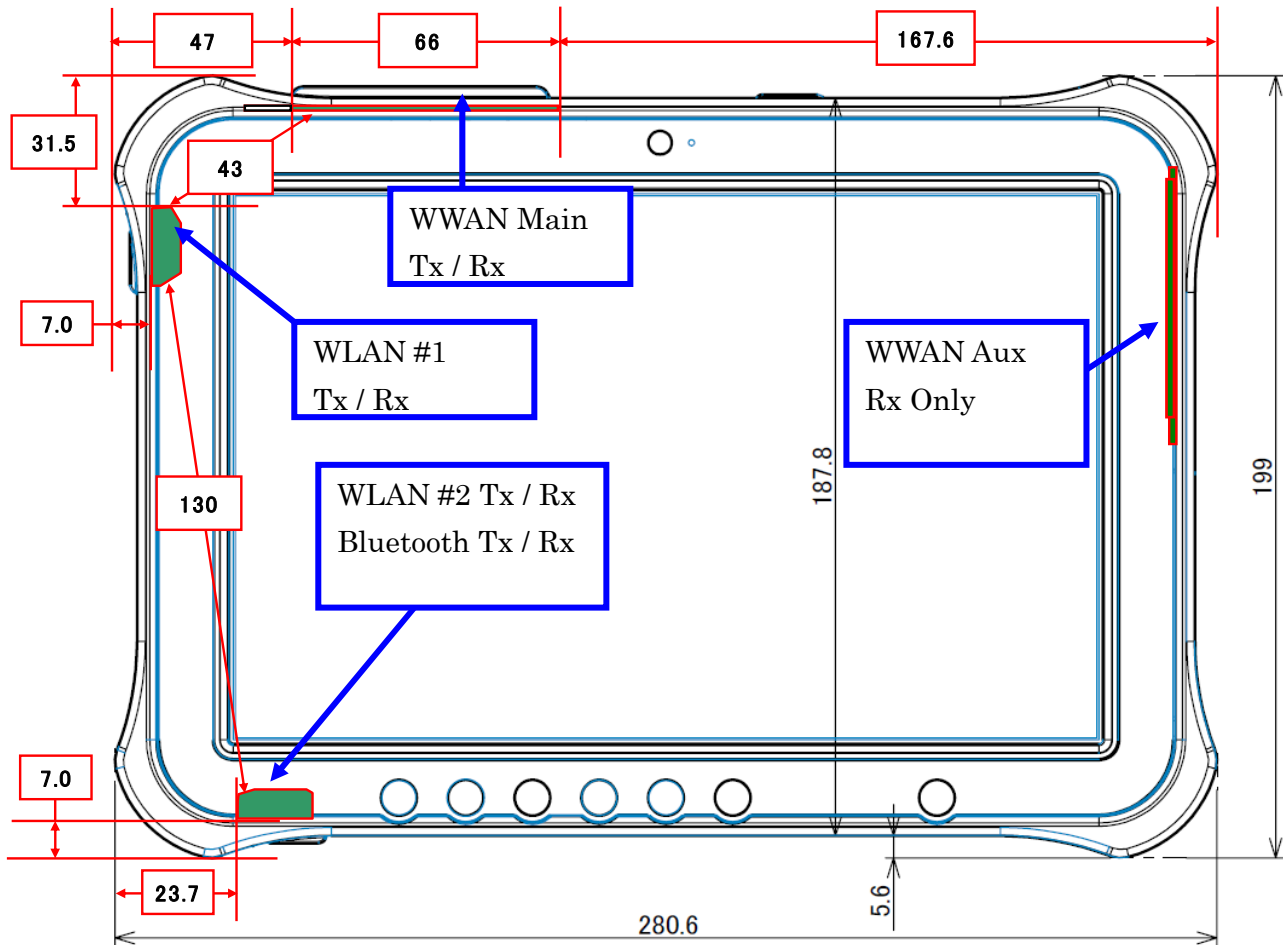
WLAN #2  
WLAN Aux Antenna and  
Bluetooth Antenna



WLAN #1  
WLAN Main Antenna

3\_1) Diagram: Antenna position

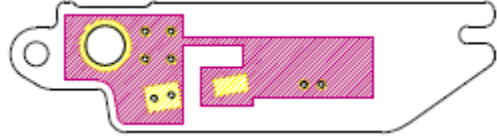
Unit: mm



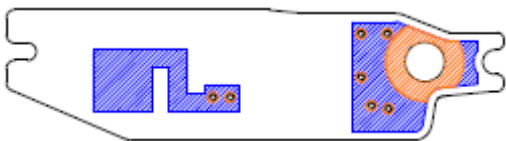
WLAN #1 Top side



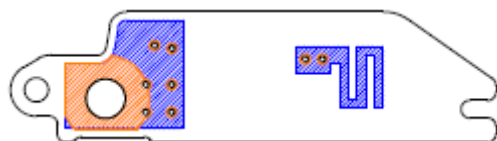
WLAN #2 Top side



WLAN #1 Bottom side

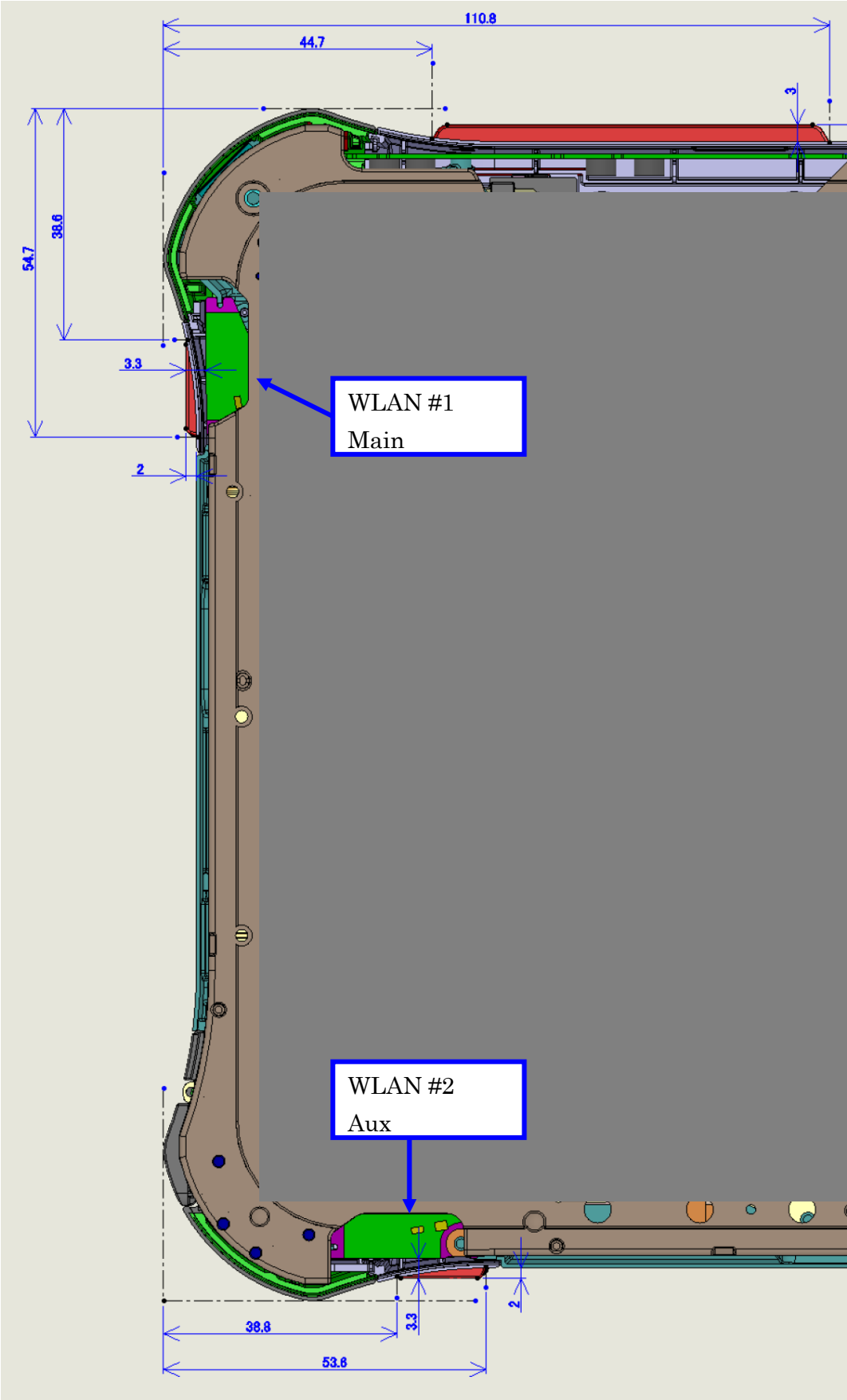


WLAN #2 Bottom side



3\_2) Diagram: Antenna spacer

Unit: mm

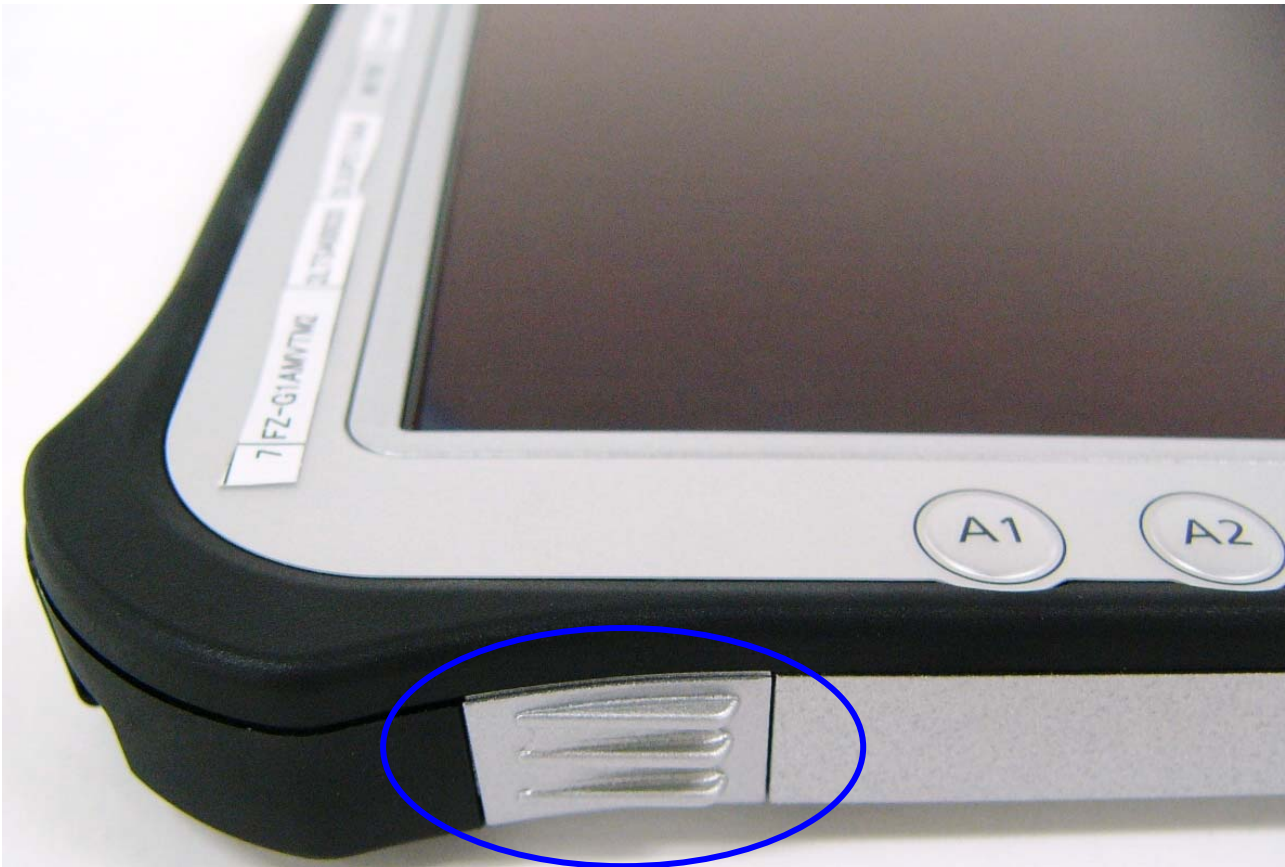


3\_3) Antenna spacer photos

1) WLAN #1 [Main]



2) WLAN #2 [Aux] & Bluetooth



## 4) Antenna Gain &amp; Type

## WLAN #1 TX/RX

< Antenna type: PIFA Antenna >

1.97dBi max 2.4GHz

-0.66dBi max 5.18GHz – 5.32GHz

1.83dBi max 5.50GHz – 5.70GHz

1.02dBi max 5.70GHz – 5.825GHz

## WLAN #2 TX/RX

< Antenna type: PIFA Antenna >

0.59dBi max 2.4GHz

-8.21dBi max 5.18GHz – 5.32GHz

-4.76dBi max 5.50GHz – 5.70GHz

-4.76dBi max 5.70GHz – 5.825GHz

## Bluetooth (WLAN#2 antenna for common use)

0.59dBi max 2.4GHz

That's all