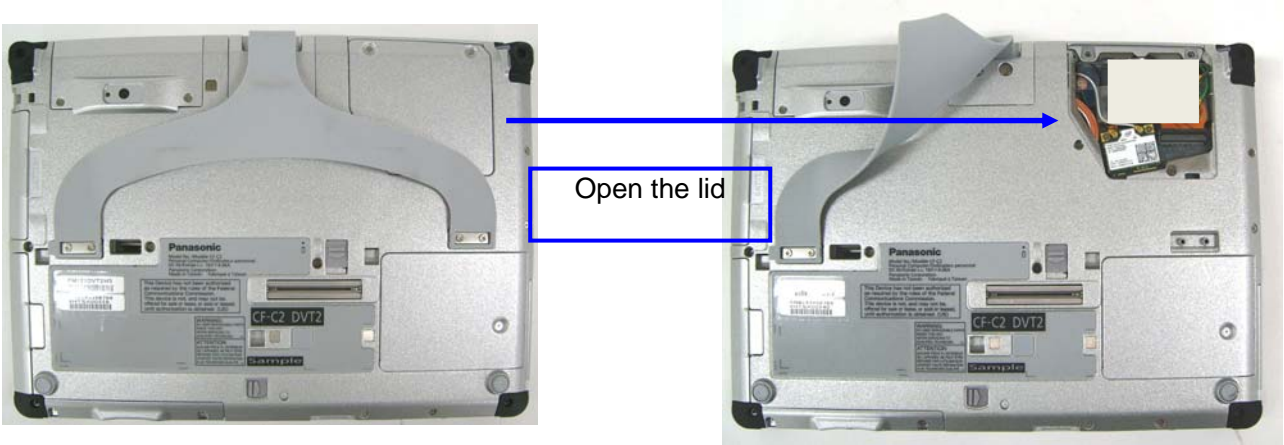


< CF-C2mk1 photos with WL12A >

1. Module Locations



Module: WL12A

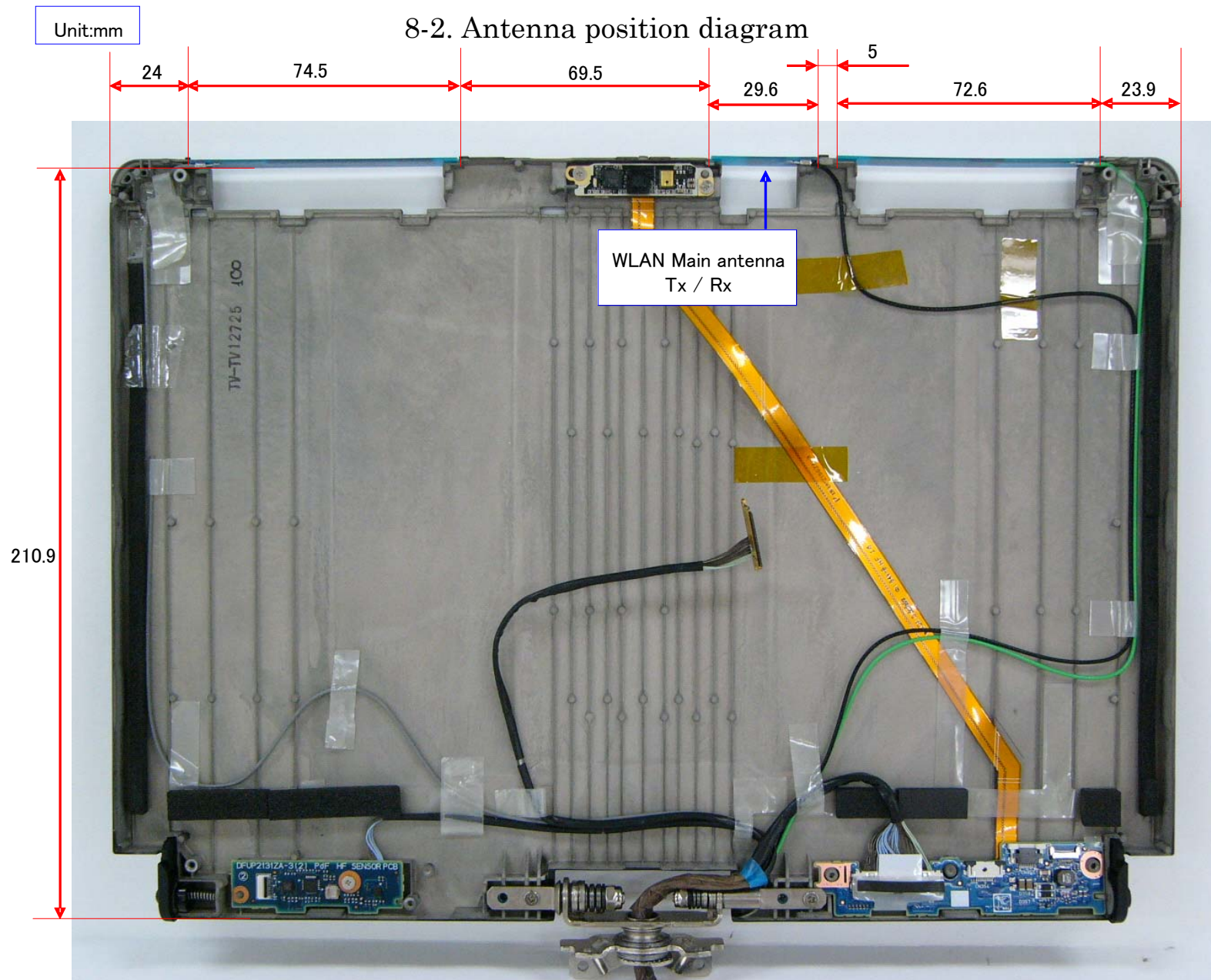
2 Antenna Locations

WLAN Main
TX/RX Antenna



WLAN Aux TX/RX
Bluetooth TX/RX
Antenna





3. Antenna photos



WLAN Main TX/RX Antenna



WLAN Aux & Bluetooth TX/RX Antenna

Antenna type and Antenna Gain for WL12A

WLAN Main TX/RX Antenna: PIFA Antenna

-1.28dBi max 2.4GHz

-0.29dBi max 5.18-5.32GHz

-1.53dBi max 5.50-5.70GHz

-2.35dBi max 5.700-5.825GHz

WLAN Aux TX/RX Antenna: PIFA Antenna

0.02dBi max 2.4GHz

2.95dBi max 5.18-5.32GHz

0.72dBi max 5.50-5.70GHz

0.72dBi max 5.700-5.825GHz