

Test Laboratory: UL CCS SAR Lab C

### 20110810\_SystemPerformanceCheck-D2450V2 SN 706

Communication System: CW; Frequency: 2450 MHz; Duty Cycle: 1:1  
Medium parameters used:  $f = 2450$  MHz;  $\sigma = 1.96$  mho/m;  $\epsilon_r = 51.11$ ;  $\rho = 1000$  kg/m<sup>3</sup>  
Phantom section: Flat Section

Room Ambient Temperature: 24.0 deg. C; Liquid Temperature: 23.0 deg. C

DASY5 Configuration:

- Area Scan setting - Find Secondary Maximum Within: 2.0 dB and with a peak SAR value greater than 0.0012W/kg
- Probe: EX3DV4 - SN3772; ConvF(6.41, 6.41, 6.41); Calibrated: 5/3/2011
- Sensor-Surface: 2.5mm (Mechanical Surface Detection)
- Electronics: DAE4 Sn1257; Calibrated: 5/3/2011
- Phantom: ELI v4.0 (A); Type: QDOVA001BB; Serial: 1117
- Measurement SW: DASY52, Version 52.6 (2); SEMCAD X Version 14.4.5 (3634)

**Body/Pin=100 mW/Area Scan (61x61x1):** Measurement grid: dx=15mm, dy=15mm

Maximum value of SAR (interpolated) = 7.207 mW/g

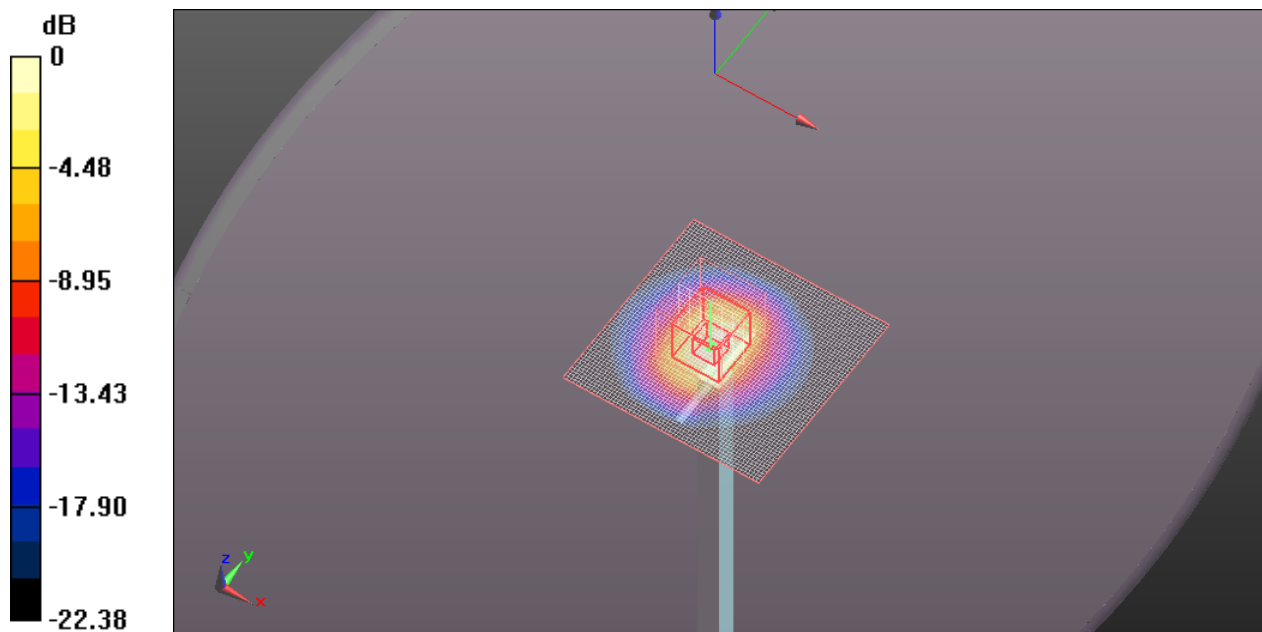
**Body/Pin=100 mW/Zoom Scan (7x7x7)/Cube 0:** Measurement grid: dx=5mm, dy=5mm, dz=5mm

Reference Value = 62.045 V/m; Power Drift = -0.0039 dB

Peak SAR (extrapolated) = 11.281 W/kg

**SAR(1 g) = 5.29 mW/g; SAR(10 g) = 2.42 mW/g**

Maximum value of SAR (measured) = 7.615 mW/g



0 dB = 7.610mW/g

Test Laboratory: UL CCS SAR Lab C

### 20110810\_SystemPerformanceCheck-D2450V2 SN 706

Communication System: CW; Frequency: 2450 MHz; Duty Cycle: 1:1

**Body/Pin=100 mW/Z Scan (1x1x21):** Measurement grid: dx=20mm, dy=20mm, dz=5mm  
Maximum value of SAR (measured) = 7.499 mW/g

