



**FCC OET BULLETIN 65 SUPPLEMENT C 01-01
IEEE STD 1528:2003**

SAR EVALUATION REPORT

For

**802.11bgn 2x2 HT20 & HT40 PCIe Mini Card Transceiver
(Tested inside of Panasonic Laptop PC CF-31)**

MODEL NUMBER: WL11E

FCC ID: ACJ9TGWL11E

REPORT NUMBER: 11J13959-1

ISSUE DATE: August 9, 2011

Prepared for

**PANASONIC CORPORATION OF NORTH AMERICA
ONE PANASONIC WAY, 4B-8
SECAUCUS, NEW JERSEY 07094, U.S.A.**

Prepared by

**COMPLIANCE CERTIFICATION SERVICES (UL CCS)
47173 BENICIA STREET
FREMONT, CA 94538, U.S.A.
TEL: (510) 771-1000
FAX: (510) 661-0888**



NVLAP LAB CODE 200065-0

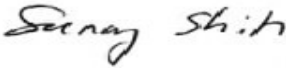

Revision History

Rev.	Issue Date	Revisions	Revised By
--	August 9, 2011	Initial Issue	--

TABLE OF CONTENTS

1. Attestation of Test Results	4
2. Test Methodology	5
3. Facilities and Accreditation	5
4. Calibration and Uncertainty	6
4.1. <i>Measuring Instrument Calibration</i>	6
4.2. <i>Measurement Uncertainty</i>	7
5. Equipment Under Test	8
6. System Specification	9
7. Composition of Ingredients for Tissue Simulating Liquids	10
8. Tissue Dielectric Parameters	11
8.1. <i>Liquid Check Results</i>	12
9. System Verification	13
9.1. <i>System Check Results</i>	13
10. SAR Measurement Procedures	14
11. RF Output Power Verification	15
12. Summary of Test Results	16
12.1. <i>SAR Test Results for 2.4 GHz</i>	16
12.2. <i>SAR Test Plots</i>	17
13. Appendixes	21
13.1. <i>Appendix A: System Check Plots</i>	21
13.2. <i>Appendix B: Calibration Certificate for EX3DV4 SN 3773</i>	21
13.3. <i>Appendix C: Calibration Certificate for D2450V2 SN 706</i>	21
14. Antenna Locations & Separation Distances	22
14.1. <i>Summary of Test Configurations</i>	22
15. Setup Photos	23
16. Host Device Photos	24

1. Attestation of Test Results

Applicant name:	Panasonic Corporation Of North America		
EUT description:	802.11bgn HT20 & HT40 2x2 PCIe Minicard Transceiver (Tested inside of Panasonic Laptop PC, Model CF-31)		
Model number:	WL11E		
Device category:	Portable		
Exposure category:	General Population/Uncontrolled Exposure		
Date tested:	August 5 , 2011		
FCC / IC Rule Parts	Freq. Range [MHz]	Highest 1g SAR (W/kg)	Limit (W/kg)
15.247 / RSS-102	2412 – 2462	0.123 W/kg	1.6
Applicable Standards			Test Results
OET Bulletin 65 Supplement C 01-01, IEEE STD 1528: 2003			Pass
<p>Compliance Certification Services, Inc. (UL CCS) tested the above equipment in accordance with the requirements set forth in the above standards. All indications of Pass/Fail in this report are opinions expressed by UL CCS based on interpretations and/or observations of test results. Measurement Uncertainties were not taken into account and are published for informational purposes only. The test results show that the equipment tested is capable of demonstrating compliance with the requirements as documented in this report.</p> <p>Note: The results documented in this report apply only to the tested sample, under the conditions and modes of operation as described herein. This document may not be altered or revised in any way unless done so by UL CCS and all revisions are duly noted in the revisions section. Any alteration of this document not carried out by UL CCS will constitute fraud and shall nullify the document. This report must not be used by the client to claim product certification, approval, or endorsement by NVLAP, NIST, any agency of the Federal Government, or any agency of any government (NIST Handbook 150, Annex A). This report is written to support regulatory compliance of the applicable standards stated above.</p>			
Approved & Released For CCS By:		Tested By:	
			
Sunny Shih Engineering Team Leader Compliance Certification Services (UL CCS)		Tomochika Sato SAR Engineer Compliance Certification Services (UL CCS)	

2. Test Methodology

The tests documented in this report were performed in accordance with FCC OET Bulletin 65 Supplement C Edition 01-01, IEEE STD 1528:2003, and the following KDB Procedures.

- 248227 SAR measurement procedures for 802.11a/b/g transmitters
- 616217 D03 SAR Supp Note and Netbook Laptop V01

3. Facilities and Accreditation

The test sites and measurement facilities used to collect data are located at 47173 Benicia Street, Fremont, California, USA.

UL CCS is accredited by NVLAP, Laboratory Code 200065-0. The full scope of accreditation can be viewed at <http://www.ccsemc.com>

4. Calibration and Uncertainty

4.1. Measuring Instrument Calibration

The measuring equipment utilized to perform the tests documented in this report has been calibrated in accordance with the manufacturer's recommendations, and is traceable to recognized national standards.

Name of Equipment	Manufacturer	Type/Model	Serial No.	Cal. Due date		
				MM	DD	Year
Robot - Six Axes	Stäubli	RX90BL	N/A	N/A		
Robot Remote Control	Stäubli	CS7MB	S-0396	N/A		
DASY4 Measurement Server	SPEAG	SEUMS001BA	1246	N/A		
Probe Alignment Unit	SPEAG	LB5/ 80	SE UKS 030 AA	N/A		
SAM Twin Phantom	SPEAG	QDOOOP40CD	1629	N/A		
Oval Flat Phantom (ELI 5.0) A	SPEAG	QDOVA001BB	1120	N/A		
Oval Flat Phantom (ELI 5.0) B	SPEAG	QDOVA001BB	1118	N/A		
Dielectric Probe kit	HP	85070C	N/A	N/A		
ESA Series Network Analyzer	Agilent	E5071B	MY42100131	2	2	2012
Synthesized Signal Generator	HP	83732B	US34490599	7	14	2012
E-Field Probe	SPEAG	EX3DV4	3773	5	3	2012
Thermometer	ERTCO	639-1S	1718	8	19	2011
Data Acquisition Electronics	SPEAG	DAE4	1258	5	2	2012
System Validation Dipole	SPEAG	*D2450V2	706	4	19	2012
Power Meter	Giga-tronics	8651A	8651404	3	13	2012
Power Sensor	Giga-tronics	80701A	1834588	3	13	2012
Amplifier	Mini-Circuits	ZVE-8G	90606	N/A		
Amplifier	Mini-Circuits	ZHL-42W	D072701-5	N/A		
Simulating Liquid	SPEAG	MSL2450	N/A	Within 24 hrs of first test		

Note:

*Per KDB 450824 D02 requirements for dipole calibration, UL CCS has adopted two years calibration intervals. On annual basis, each measurement dipole has been evaluated and is in compliance with the following criteria:

1. There is no physical damage on the dipole
2. System validation with specific dipole is within 10% of calibrated value.
3. Return-loss is within 20% of calibrated measurement. (Verification data include with D2450V2 calibration certificate)
4. Impedance is within 5Ω of calibrated measurement. (Verification data include with dipole D2450V2 calibration certificate)

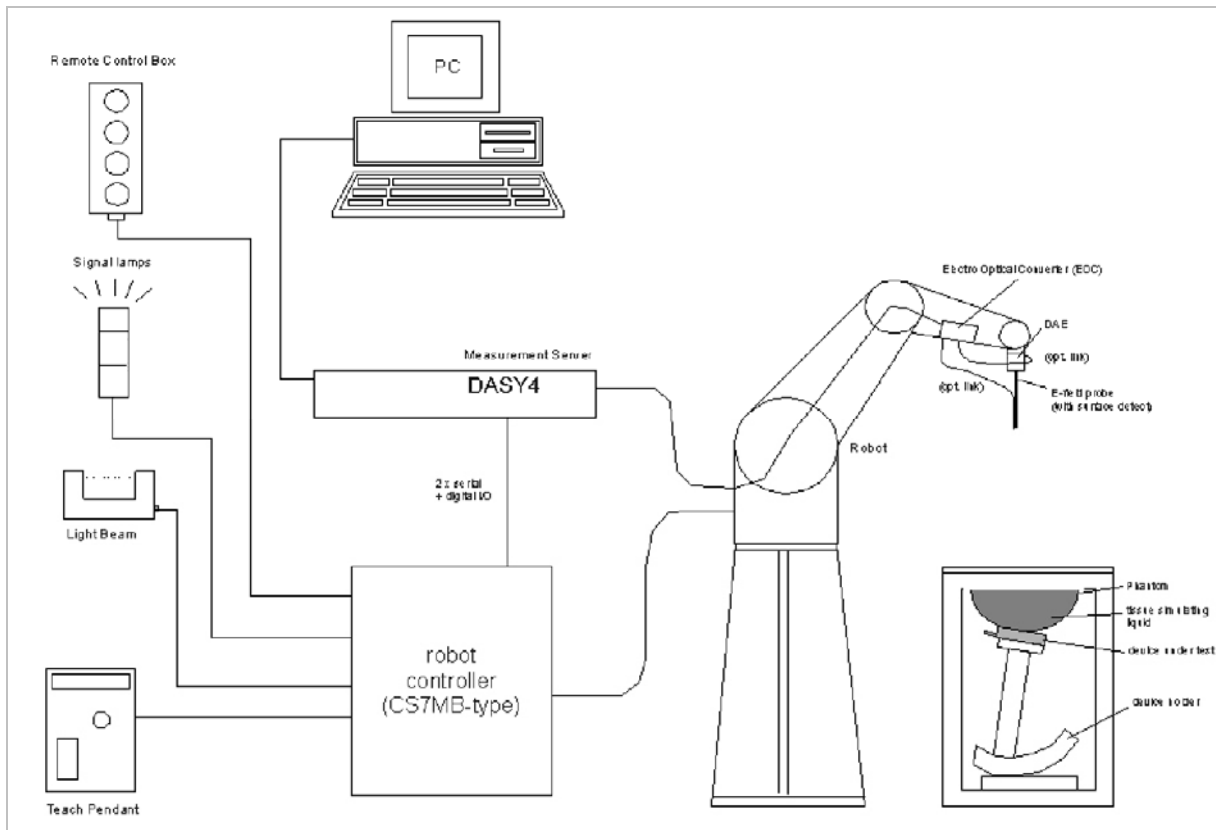
4.2. Measurement Uncertainty

Measurement uncertainty for 300 MHz to 3 GHz averaged over 1 gram					
Component	error, %	Probe Distribution	Divisor	Sensitivity	U (X), %
Measurement System					
Probe Calibration (k=1)	5.50	Normal	1	1	5.50
Axial Isotropy	1.15	Rectangular	1.732	0.7071	0.47
Hemispherical Isotropy	2.30	Rectangular	1.732	0.7071	0.94
Boundary Effect	0.90	Rectangular	1.732	1	0.52
Probe Linearity	3.45	Rectangular	1.732	1	1.99
System Detection Limits	1.00	Rectangular	1.732	1	0.58
Readout Electronics	0.30	Normal	1	1	0.30
Response Time	0.80	Rectangular	1.732	1	0.46
Integration Time	2.60	Rectangular	1.732	1	1.50
RF Ambient Conditions - Noise	3.00	Rectangular	1.732	1	1.73
RF Ambient Conditions - Reflections	3.00	Rectangular	1.732	1	1.73
Probe Positioner Mechanical Tolerance	0.40	Rectangular	1.732	1	0.23
Probe Positioning with respect to Phantom	2.90	Rectangular	1.732	1	1.67
Extrapolation, Interpolation and Integration	1.00	Rectangular	1.732	1	0.58
Test Sample Related					
Test Sample Positioning	2.90	Normal	1	1	2.90
Device Holder Uncertainty	3.60	Normal	1	1	3.60
Output Power Variation - SAR Drift	5.00	Rectangular	1.732	1	2.89
Phantom and Tissue Parameters					
Phantom Uncertainty (shape and thickness)	4.00	Rectangular	1.732	1	2.31
Liquid Conductivity - deviation from target	5.00	Rectangular	1.732	0.64	1.85
Liquid Conductivity - measurement	0.46	Normal	1	0.64	0.29
Liquid Permittivity - deviation from target	5.00	Rectangular	1.732	0.6	1.73
Liquid Permittivity - measurement	0.20	Normal	1	0.6	0.12
Combined Standard Uncertainty U _c (y) =					9.45
Expanded Uncertainty U, Coverage Factor = 2, > 95 % Confidence =				18.89	%
Expanded Uncertainty U, Coverage Factor = 2, > 95 % Confidence =				1.50	dB

5. Equipment Under Test

802.11n 2x2 PCIe Minicard Transceiver, Model WL11E (Tested inside of Panasonic Laptop PC, Model CF-31)					
Normal operation:	Laptop mode with display open at 90° to the keyboard.				
Antenna tested:	<table border="0"> <tr> <td><u>Manufactured</u></td> <td><u>Part number</u></td> </tr> <tr> <td>Panasonic</td> <td>Main (Chain A): DFUP1986ZA(1)-2 Aux (Chain B): DFUP2061ZA</td> </tr> </table>	<u>Manufactured</u>	<u>Part number</u>	Panasonic	Main (Chain A): DFUP1986ZA(1)-2 Aux (Chain B): DFUP2061ZA
<u>Manufactured</u>	<u>Part number</u>				
Panasonic	Main (Chain A): DFUP1986ZA(1)-2 Aux (Chain B): DFUP2061ZA				
Antenna-to-antenna/user separation distances:	See Section 14 for details of antenna locations and separation distances.				
Simultaneous transmission:	<ul style="list-style-type: none"> • WWAN can transmit simultaneously with WiFi • WWAN can transmit simultaneously with Bluetooth • WiFi can transmit simultaneously with Bluetooth 				
Assessment for SAR evaluation for Simultaneous transmission:	<p>WiFi and BT The Bluetooth's maximum output power is $\leq 60/f_{(GHz)}$ mW. Therefore stand-alone SAR evaluation is not required. Thus, simultaneous transmission SAR testing is not required. (Bluetooth - FCC ID: ACJ9TGGBT11A; IC: 216A-CFBT11A)</p> <p>WWAN and BT Same as WiFi and BT</p> <p>WWAN and WiFi SAR is not required due to $\sum (SAR_{1g}) < SAR$ limit.</p>				

6. System Specification



The DASYS system for performing compliance tests consists of the following items:

- A standard high precision 6-axis robot (Stäubli RX family) with controller, teach pendant and software. An arm extension for accommodating the data acquisition electronics (DAE).
- A dosimetric probe, i.e., an isotropic E-field probe optimized and calibrated for usage in tissue simulating liquid. The probe is equipped with an optical surface detector system.
- A data acquisition electronics (DAE) which performs the signal amplification, signal multiplexing, AD-conversion, offset measurements, mechanical surface detection, collision detection, etc. The unit is battery powered with standard or rechargeable batteries. The signal is optically transmitted to the EOC.
- The function of the measurement server is to perform the time critical tasks such as signal filtering, control of the robot operation and fast movement interrupts.
- A probe alignment unit which improves the (absolute) accuracy of the probe positioning.
- A computer operating Windows 2000 or Windows XP.
- DASY software.
- Remote controls with teach pendant and additional circuitry for robot safety such as warning lamps, etc.
- The SAM twin phantom enabling testing left-hand and right-hand usage.
- The device holder for handheld mobile phones.
- Tissue simulating liquid mixed according to the given recipes.
- Validation dipole kits allowing validating the proper functioning of the system.

7. Composition of Ingredients for Tissue Simulating Liquids

The following tissue formulations are provided for reference only as some of the parameters have not been thoroughly verified. The composition of ingredients may be modified accordingly to achieve the desired target tissue parameters required for routine SAR evaluation.

Ingredients (% by weight)	Frequency (MHz)									
	450		835		915		1900		2450	
Tissue Type	Head	Body	Head	Body	Head	Body	Head	Body	Head	Body
Water	38.56	51.16	41.45	52.4	41.05	56.0	54.9	40.4	62.7	73.2
Salt (NaCl)	3.95	1.49	1.45	1.4	1.35	0.76	0.18	0.5	0.5	0.04
Sugar	56.32	46.78	56.0	45.0	56.5	41.76	0.0	58.0	0.0	0.0
HEC	0.98	0.52	1.0	1.0	1.0	1.21	0.0	1.0	0.0	0.0
Bactericide	0.19	0.05	0.1	0.1	0.1	0.27	0.0	0.1	0.0	0.0
Triton X-100	0.0	0.0	0.0	0.0	0.0	0.0	0.0	0.0	36.8	0.0
DGBE	0.0	0.0	0.0	0.0	0.0	0.0	44.92	0.0	0.0	26.7
Dielectric Constant	43.42	58.0	42.54	56.1	42.0	56.8	39.9	54.0	39.8	52.5
Conductivity (S/m)	0.85	0.83	0.91	0.95	1.0	1.07	1.42	1.45	1.88	1.78

Salt: 99+% Pure Sodium Chloride Sugar: 98+% Pure Sucrose
 Water: De-ionized, 16 MΩ+ resistivity HEC: Hydroxyethyl Cellulose
 DGBE: 99+% Di(ethylene glycol) butyl ether, [2-(2-butoxyethoxy)ethanol]
 Triton X-100 (ultra pure): Polyethylene glycol mono [4-(1,1, 3, 3-tetramethylbutyl)phenyl]ether

Simulating Liquids for 5 GHz, Manufactured by SPEAG

Ingredients	(% by weight)
Water	78
Mineral oil	11
Emulsifiers	9
Additives and Salt	2

8. Tissue Dielectric Parameters

The simulating liquids are checked at the beginning of a series of SAR measurements to determine if the dielectric parameters are within the tolerances of the specified target values. For frequencies in 300 MHz to just under 2 GHz, the measured conductivity and relative permittivity were within $\pm 5\%$ of the target values. For frequencies above 2 GHz the measured conductivity was within $\pm 5\%$ of the target values. The measured relative permittivity tolerance was within $\pm 10\%$ of the target value.

Reference Values of Tissue Dielectric Parameters for Head & Body Phantom

The body tissue parameters that have not been specified in P1528 are derived from the tissue dielectric parameters computed from the 4-Cole-Cole equations and extrapolated according to the head parameters specified in IEEE Standard 1528.

Target Frequency (MHz)	Head		Body	
	ϵ_r	σ (S/m)	ϵ_r	σ (S/m)
150	52.3	0.76	61.9	0.8
300	45.3	0.87	58.2	0.92
450	43.5	0.87	56.7	0.94
835	41.5	0.9	55.2	0.97
900	41.5	0.97	55	1.05
915	41.5	0.98	55	1.06
1450	40.5	1.2	54	1.3
1610	40.3	1.29	53.8	1.4
1800 – 2000	40	1.4	53.3	1.52
2450	39.2	1.8	52.7	1.95
3000	38.5	2.4	52	2.73
5800	35.3	5.27	48.2	6

(ϵ_r = relative permittivity, σ = conductivity and $\rho = 1000 \text{ kg/m}^3$)

Reference Values of Tissue Dielectric Parameters for Body Phantom (for 3000 MHz – 5800 MHz)

In the current guidelines and draft standards for compliance testing of mobile phones (i.e., IEEE P1528, OET 65 Supplement C), the dielectric parameters suggested for head and body tissue simulating liquid are given only at 3.0 GHz and 5.8 GHz. As an intermediate solution, dielectric parameters for the frequencies between 5 to 5.8 GHz were obtained using linear interpolation (see table below).

SPEAG has developed suitable head and body tissue simulating liquids consisting of the following ingredients: de-ionized water, salt and a special composition including mineral oil and an emulsifier. Dielectric parameters of these liquids were measured using an HP 8570C Dielectric Probe Kit in conjunction with an HP 8753ES Network Analyzer (30 kHz – 6G Hz). The differences with respect to the interpolated values were well within the desired $\pm 5\%$ for the whole 5 to 5.8 GHz range.

f (MHz)	Body Tissue		Reference
	rel. permittivity	conductivity	
3000	52.0	2.73	Standard
5100	49.1	5.18	Interpolated
5200	49.0	5.30	Interpolated
5300	48.9	5.42	Interpolated
5400	48.7	5.53	Interpolated
5500	48.6	5.65	Interpolated
5600	48.5	5.77	Interpolated
5700	48.3	5.88	Interpolated
5800	48.2	6.00	Standard

(ϵ_r = relative permittivity, σ = conductivity and $\rho = 1000 \text{ kg/m}^3$)

8.1. Liquid Check Results

Measured by: David Rodgers

Date	Freq. (MHz)	Liquid Parameters		Measured	Target	Delta (%)	Limit ±(%)	
8/5/2011	Body 2450	e'	52.5967	Relative Permittivity (ε _r):	52.60	52.70	-0.20	5
		e''	14.2487	Conductivity (σ):	1.94	1.95	-0.46	5

Liquid Check

Ambient temperature: 25 deg. C; Liquid temperature: 24 deg. C; Relative humidity = 40%
 August 05, 2011 08:35 AM

Frequency	e'	e''
2350000000.	52.9286	13.7750
2355000000.	52.9059	13.7960
2360000000.	52.8846	13.8201
2365000000.	52.8553	13.8448
2370000000.	52.8297	13.8693
2375000000.	52.8025	13.8984
2380000000.	52.7775	13.9271
2385000000.	52.7543	13.9560
2390000000.	52.7331	13.9863
2395000000.	52.7140	14.0149
2400000000.	52.7000	14.0461
2405000000.	52.6876	14.0718
2410000000.	52.6746	14.0982
2415000000.	52.6672	14.1187
2420000000.	52.6580	14.1402
2425000000.	52.6494	14.1581
2430000000.	52.6424	14.1786
2435000000.	52.6315	14.1957
2440000000.	52.6220	14.2140
2445000000.	52.6104	14.2324
2450000000.	52.5967	14.2487
2455000000.	52.5794	14.2663
2460000000.	52.5611	14.2873
2465000000.	52.5421	14.3063
2470000000.	52.5198	14.3289
2475000000.	52.4952	14.3519
2480000000.	52.4725	14.3751
2485000000.	52.4469	14.4020
2490000000.	52.4214	14.4291
2495000000.	52.4006	14.4579
2500000000.	52.3765	14.4849

The conductivity (σ) can be given as:

$$\sigma = \omega \epsilon_0 e'' = 2 \pi f \epsilon_0 e''$$

where $f = \text{target } f * 10^6$

$$\epsilon_0 = 8.854 * 10^{-12}$$

9. System Verification

The system performance check is performed prior to any usage of the system in order to verify SAR system accuracy. The system performance check verifies that the system operates within its specifications of $\pm 10\%$.

System Performance Check Measurement Conditions

- The measurements were performed in the flat section of the SAM twin phantom filled with Body simulating liquid of the following parameters.
- The DASY5 system with an Isotropic E-Field Probe EX3DV4-SN: 3773 was used for the measurements.
- The dipole was mounted on the small tripod so that the dipole feed point was positioned below the center marking of the flat phantom section and the dipole was oriented parallel to the body axis (the long side of the phantom). The standard measuring distance was 10 mm (above 1 GHz) and 15 mm (below 1 GHz) from dipole center to the simulating liquid surface.
- The coarse grid with a grid spacing of 15 mm was aligned with the dipole.
 For 5 GHz band - The coarse grid with a grid spacing of 10 mm was aligned with the dipole.
- Special 7x7x7 (2.4 GHz) fine cube was chosen for cube integration and Special 8x8x10 (5 GHz) fine cube was chosen for cube integration
- Distance between probe sensors and phantom surface was set to 2.5 mm.
 For 5 GHz band - Distance between probe sensors and phantom surface was set to 2.5 mm
- The dipole input powers (forward power) were 100 mW.
- The results are normalized to 1 W input power.

Reference SAR Values for HEAD & BODY-tissue from calibration certificate of SPEAG.

System validation dipole	Cal. certificate #	Cal. date	SAR Avg (mW/g)			
			Tissue:	Freq.	Head	Body
D2450V2 SN 706	D2450V2-706_Apr10	4/19/10	1g SAR:	2.4 GHz	51.6	52.4
			10g SAR:		24.4	24.5

9.1. System Check Results

System validation dipole	Date Tested	Measured (Normalized to 1 W)		Target	Delta (%)	Tolerance (%)
		Tissue:	Body			
D2450V2 (2.45GHz)	08/05/11	1g SAR:	54.8	52.4	4.58	± 10
		10g SAR:	25.8	24.5	5.31	

10. SAR Measurement Procedures

Step 1: Power Reference Measurement

The Power Reference Measurement and Power Drift Measurements are for monitoring the power drift of the device under test in the batch process. The Minimum distance of probe sensors to surface determines the closest measurement point to phantom surface. The minimum distance of probe sensors to surface is 2.1 mm. This distance cannot be smaller than the Distance of sensor calibration points to probe tip as defined in the probe properties (for example, 1.2 mm for an EX3DV3 probe type).

Step 2: Area Scan

The Area Scan is used as a fast scan in two dimensions to find the area of high field values, before doing a fine measurement around the hot spot. The sophisticated interpolation routines implemented in DASY5 software can find the maximum locations even in relatively coarse grids. When an Area Scan has measured all reachable points, it computes the field maximal found in the scanned area, within a range of the global maximum. The range (in dB) is specified in the standards for compliance testing. For example, a 2 dB range is required in IEEE Standard 1528, EN 50361 and IEC 62209 standards, whereby 3 dB is a requirement when compliance is assessed in accordance with the ARIB standard (Japan). If only one Zoom Scan follows the Area Scan, then only the absolute maximum will be taken as reference. For cases where multiple maximums are detected, the number of Zoom Scans has to be increased accordingly.

Step 3: Zoom Scan

Zoom Scans are used to assess the peak spatial SAR values within a cubic averaging volume containing 1 g and 10 g of simulated tissue. The Zoom Scan measures $\geq 7 \times 7 \times 9$ (above 4.5 GHz) or $5 \times 5 \times 7$ (below 3 GHz) points within a cube whose base faces are centered on the maxima found in a preceding area scan job within the same procedure. When the measurement is done, the Zoom Scan evaluates the averaged SAR for 1 g and 10 g and displays these values next to the job's label.

Step 4: Power drift measurement

The Power Drift Measurement measures the field at the same location as the most recent power reference measurement within the same procedure, and with the same settings. The Power Drift Measurement gives the field difference in dB from the reading conducted within the last Power Reference Measurement. This allows a user to monitor the power drift of the device under test within a batch process. The measurement procedure is the same as Step 1.

Step 5: Z-Scan

The Z Scan measures points along a vertical straight line. The line runs along the Z-axis of a one-dimensional grid. In order to get a reasonable extrapolation, the extrapolated distance should not be larger than the step size in Z-direction.

11. RF Output Power Verification

2.4 GHz Band							
Mode	Rate	Ch. #	Freq. (MHz)	Target Pwr (dBm)		Actual Measured Pwr	
				Chain A	Chain B	Chain A	Chain B
802.11b	1 Mbps	1	2412	17.0		18.38	
		6	2437	20.0		20.18	
		11	2462	17.0			
		1	2412		17.0		
		6	2437		20.0		20.17
		11	2462		17.0		
802.11g	6 Mbps	1	2412	14.0			
		6	2437	20.0		20.46	
		11	2462	14.0			
		1	2412		14.0		
		6	2437		20.0		20.25
		11	2462		14.0		
802.11n HT20	MCS 0	1	2412	10.0	10.0		
		6	2437	16.0	16.0	16.50	16.44
		11	2462	10.0	10.0		
802.11n HT40	MCS 0	3	2422	8.0	8.0		
		6	2437	14.0	14.0	14.11	14.39
		9	2450	8.0	8.0		

Note:

1. The modes with highest output power channel were chosen for the conducted output power.

12. Summary of Test Results

12.1. SAR Test Results for 2.4 GHz

Lapheld

Mode	Channel	f (MHz)	Avg. Output Power (dBm)		Measured Result (mW/g)	
			Chain A	Chain B	1g-SAR	10g-SAR
802.11b	1	2412				
	6	2437		20.17	0.108	0.051
	11	2462				
802.11g	1	2412				
	6	2437		20.25	0.123	0.058
	11	2462				

12.2. SAR Test Plots

Date: 8/5/2011

Test Laboratory: UL CCS SAR Lab B

Ant-B_11b_Body_Test File for below 3 GHz

Communication System: WLAN_2.4GHz; Frequency: 2437 MHz; Duty Cycle: 1:1
Medium parameters used (interpolated): $f = 2437$ MHz; $\sigma = 1.926$ mho/m; $\epsilon_r = 52.628$; $\rho = 1000$ kg/m³
Phantom section: Flat Section

Room Ambient Temperature: 24.0 deg. C; Liquid Temperature: 23.0 deg. C

DASY5 Configuration:

- Area Scan setting - Find Secondary Maximum Within: 2.0 dB and with a peak SAR value greater than 0.0012W/kg
- Probe: EX3DV4 - SN3773; ConvF(6.87, 6.87, 6.87); Calibrated: 5/3/2011
- Sensor-Surface: 2.5mm (Mechanical Surface Detection)
- Electronics: DAE4 Sn1258; Calibrated: 5/2/2011
- Phantom: ELI v5.0 (B); Type: QDOVA001BB; Serial: 1118
- Measurement SW: DASY52, Version 52.6 (2); SEMCAD X Version 14.4.5 (3634)

802.11b_Ant B/ch 6/Area Scan (151x161x1): Measurement grid: dx=15mm, dy=15mm

Info: Interpolated medium parameters used for SAR evaluation.

Maximum value of SAR (interpolated) = 0.118 mW/g

802.11b_Ant B/ch 6/Zoom Scan (5x5x7)/Cube 0: Measurement grid: dx=8mm, dy=8mm, dz=5mm

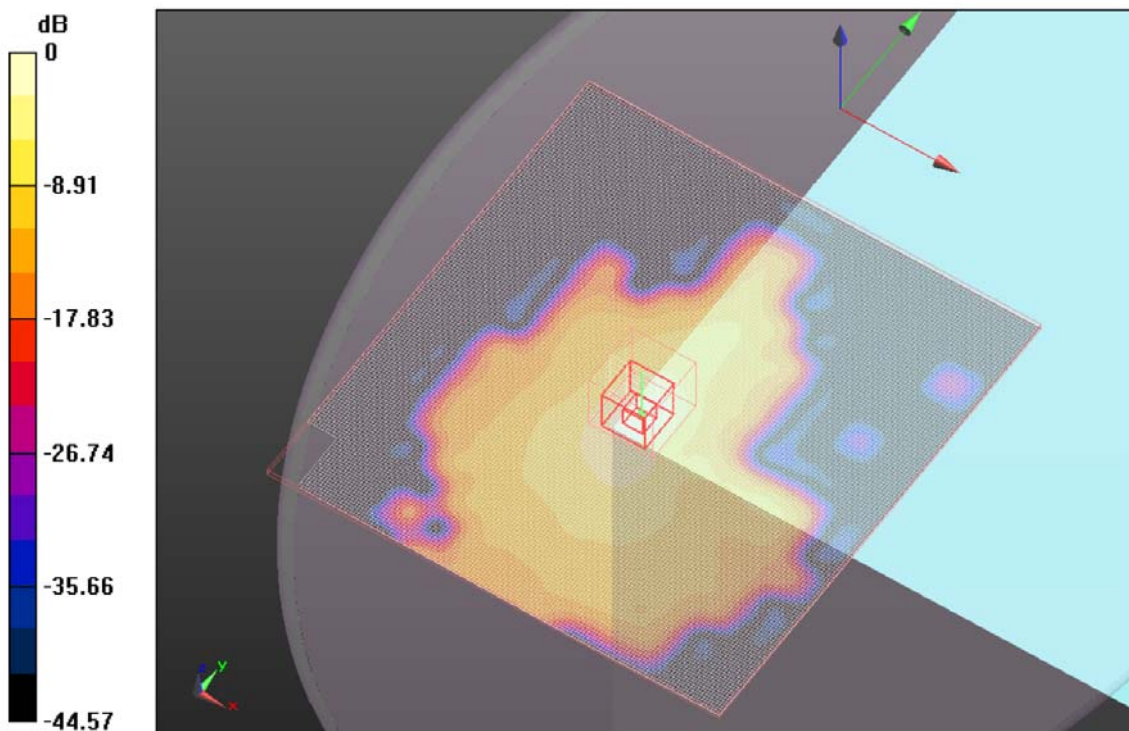
Reference Value = 7.334 V/m; Power Drift = -0.01 dB

Peak SAR (extrapolated) = 0.224 W/kg

SAR(1 g) = 0.108 mW/g; SAR(10 g) = 0.051 mW/g

Info: Interpolated medium parameters used for SAR evaluation.

Maximum value of SAR (measured) = 0.156 mW/g



0 dB = 0.160mW/g

Test Laboratory: UL CCS SAR Lab B

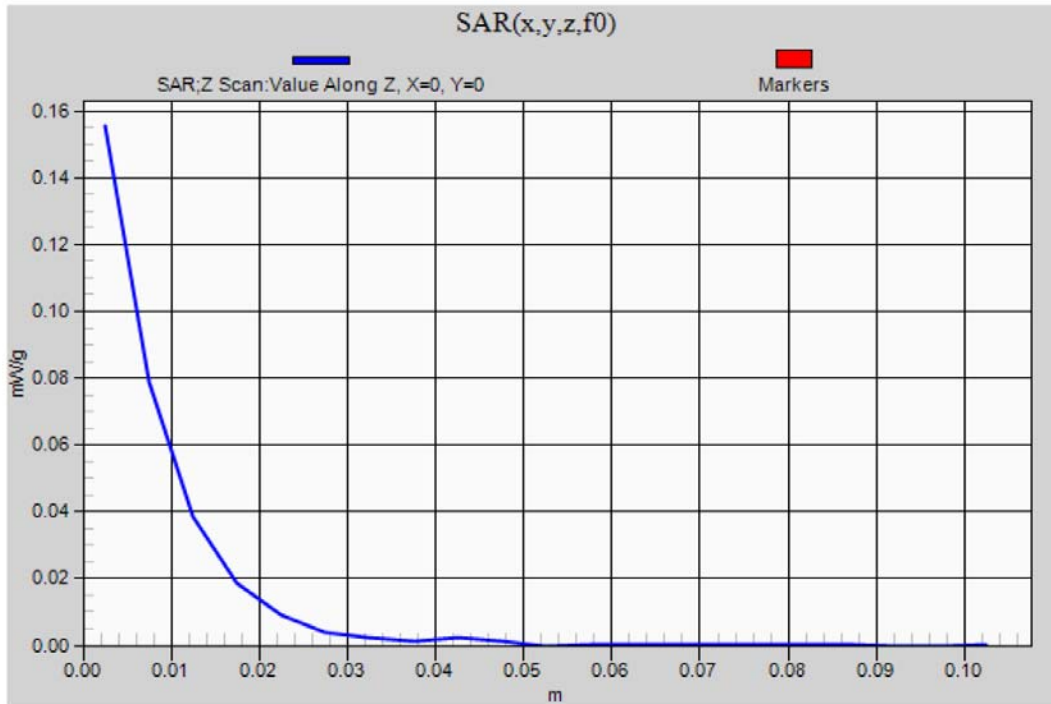
Ant-B_11b_Body_Test File for below 3 GHz

Communication System: WLAN_2.4GHz; Frequency: 2437 MHz;Duty Cycle: 1:1

802.11b_Ant B/ch 6/Z Scan (1x1x21): Measurement grid: dx=20mm, dy=20mm, dz=5mm

Info: [Interpolated medium parameters used for SAR evaluation.](#)

Maximum value of SAR (measured) = 0.155 mW/g



Test Laboratory: UL CCS SAR Lab B

Ant-B_11g_Body_Test File for below 3 GHz

Communication System: WLAN_2.4GHz; Frequency: 2437 MHz; Duty Cycle: 1:1
Medium parameters used (interpolated): $f = 2437$ MHz; $\sigma = 1.926$ mho/m; $\epsilon_r = 52.628$; $\rho = 1000$ kg/m³
Phantom section: Flat Section

Room Ambient Temperature: 24.0 deg. C; Liquid Temperature: 23.0 deg. C

DASY5 Configuration:

- Area Scan setting - Find Secondary Maximum Within: 2.0 dB and with a peak SAR value greater than 0.0012W/kg
- Probe: EX3DV4 - SN3773; ConvF(6.87, 6.87, 6.87); Calibrated: 5/3/2011
- Sensor-Surface: 2.5mm (Mechanical Surface Detection)
- Electronics: DAE4 Sn1258; Calibrated: 5/2/2011
- Phantom: ELI v5.0 (B); Type: QDOVA001BB; Serial: 1118
- Measurement SW: DASY52, Version 52.6 (2); SEMCAD X Version 14.4.5 (3634)

802.11g_Ant B/ch 6/Area Scan (151x161x1): Measurement grid: dx=15mm, dy=15mm

Info: [Interpolated medium parameters used for SAR evaluation.](#)

Maximum value of SAR (interpolated) = 0.130 mW/g

802.11g_Ant B/ch 6/Zoom Scan (5x5x7)/Cube 0: Measurement grid: dx=8mm, dy=8mm, dz=5mm

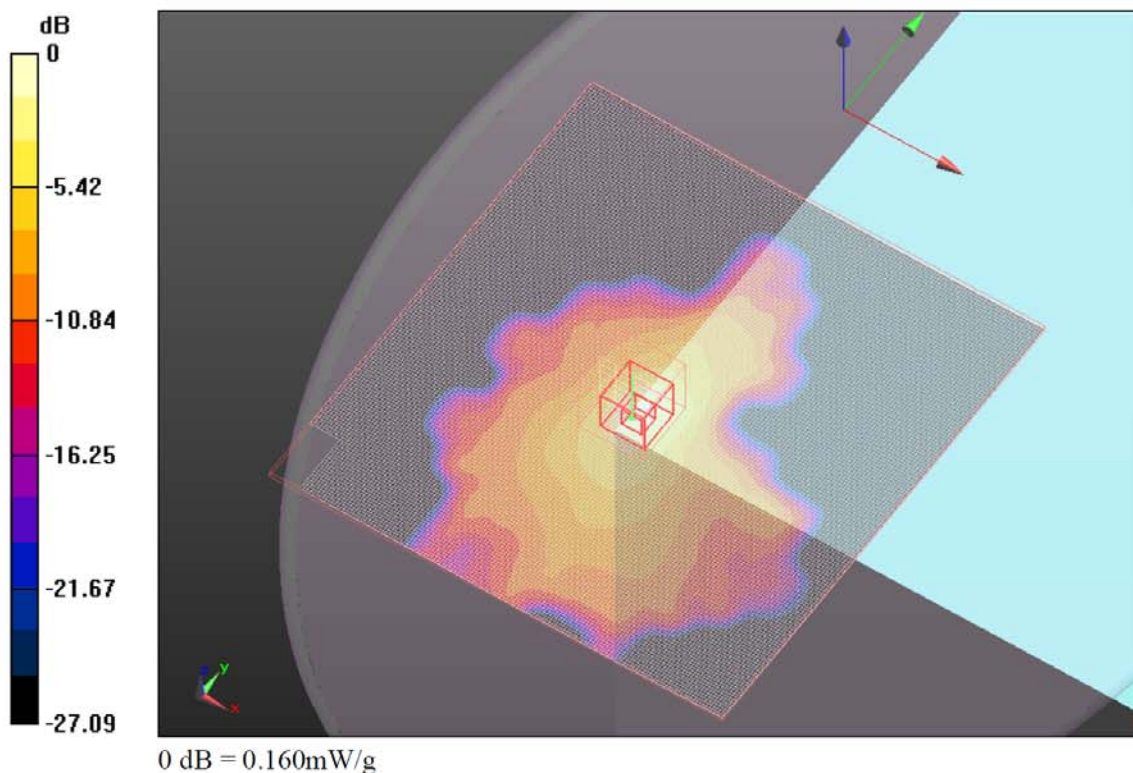
Reference Value = 8.127 V/m; Power Drift = 0.07 dB

Peak SAR (extrapolated) = 0.250 W/kg

SAR(1 g) = 0.123 mW/g; SAR(10 g) = 0.058 mW/g

Info: [Interpolated medium parameters used for SAR evaluation.](#)

Maximum value of SAR (measured) = 0.161 mW/g



Test Laboratory: UL CCS SAR Lab B

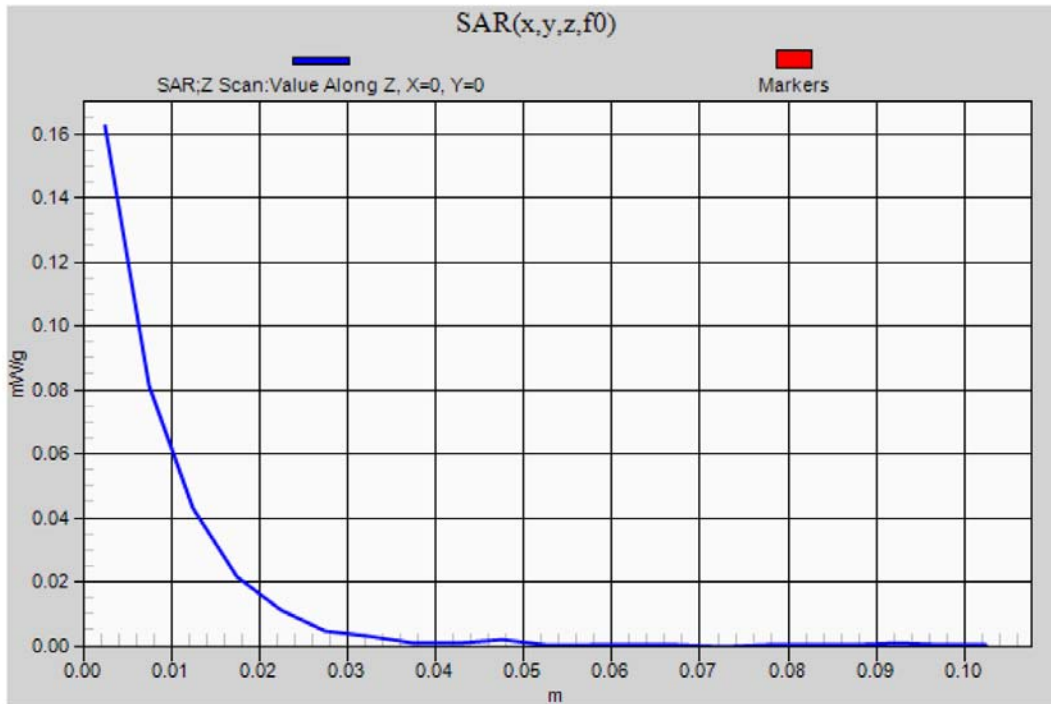
Ant-B_11g_Body_Test File for below 3 GHz

Communication System: WLAN_2.4GHz; Frequency: 2437 MHz; Duty Cycle: 1:1

802.11g_Ant B/ch 6/Z Scan (1x1x21): Measurement grid: dx=20mm, dy=20mm, dz=5mm

Info: [Interpolated medium parameters used for SAR evaluation.](#)

Maximum value of SAR (measured) = 0.162 mW/g



13. Appendixes

Refer to separated files for the following appendixes.

- 13.1. Appendix A: System Check Plots**
- 13.2. Appendix B: Calibration Certificate for EX3DV4 SN 3773**
- 13.3. Appendix C: Calibration Certificate for D2450V2 SN 706**