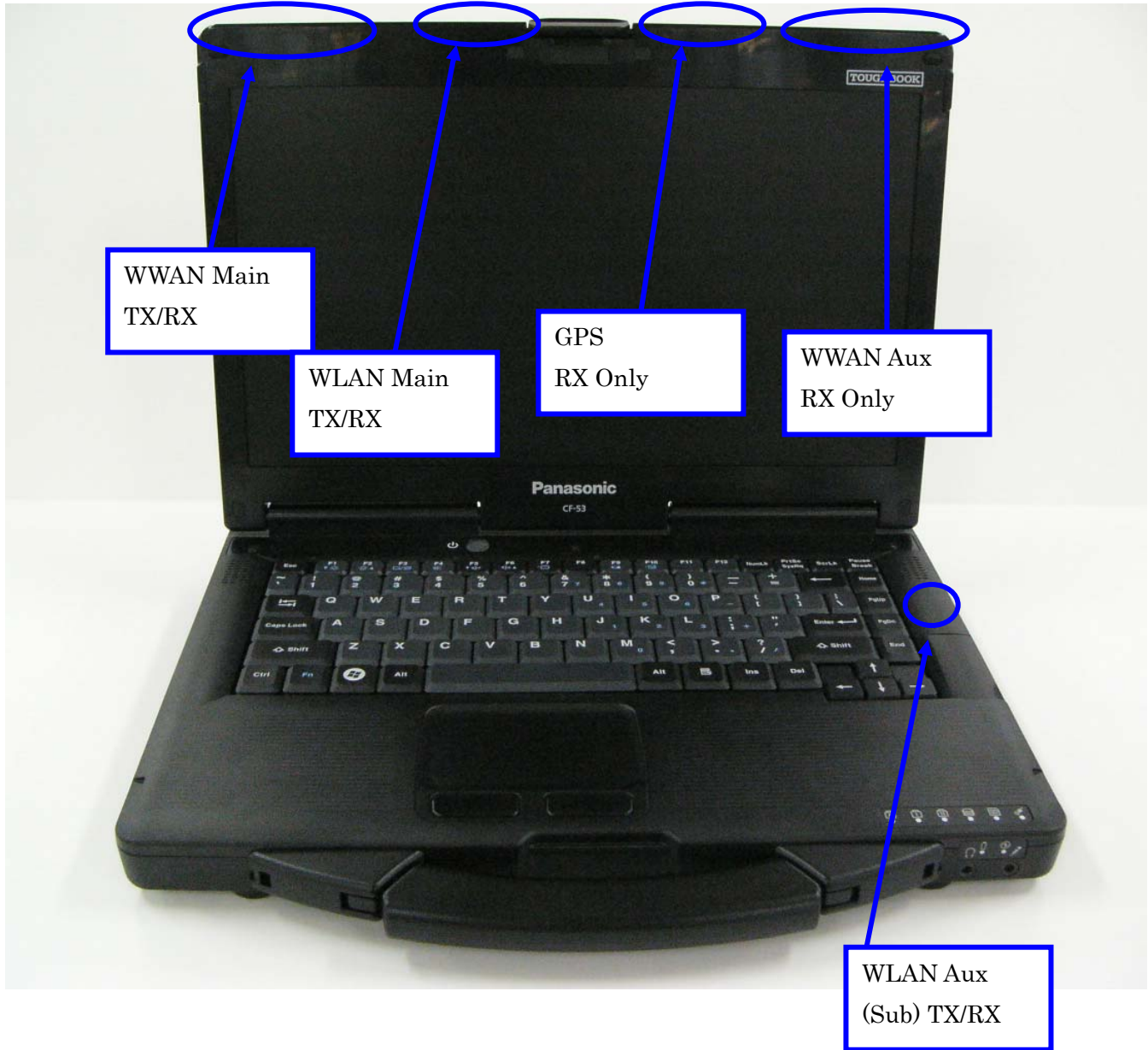


**<< CF-53mk2 LTE + GPS photographs >>**

*Overview of CF-53*



**Panasonic**

GF-53\_LTE + (GPS)

Antenna Location

Photographs

*Top View*

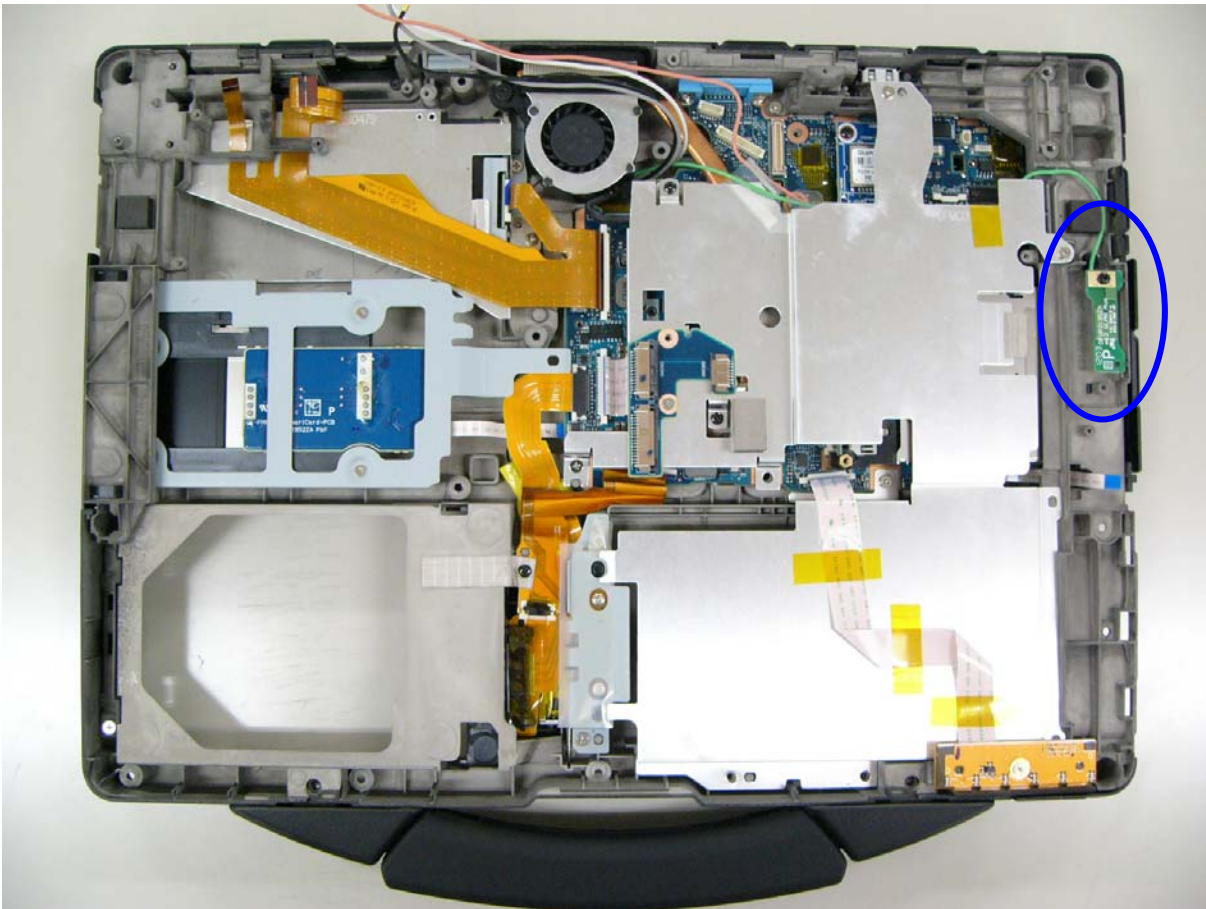


*Right side view*

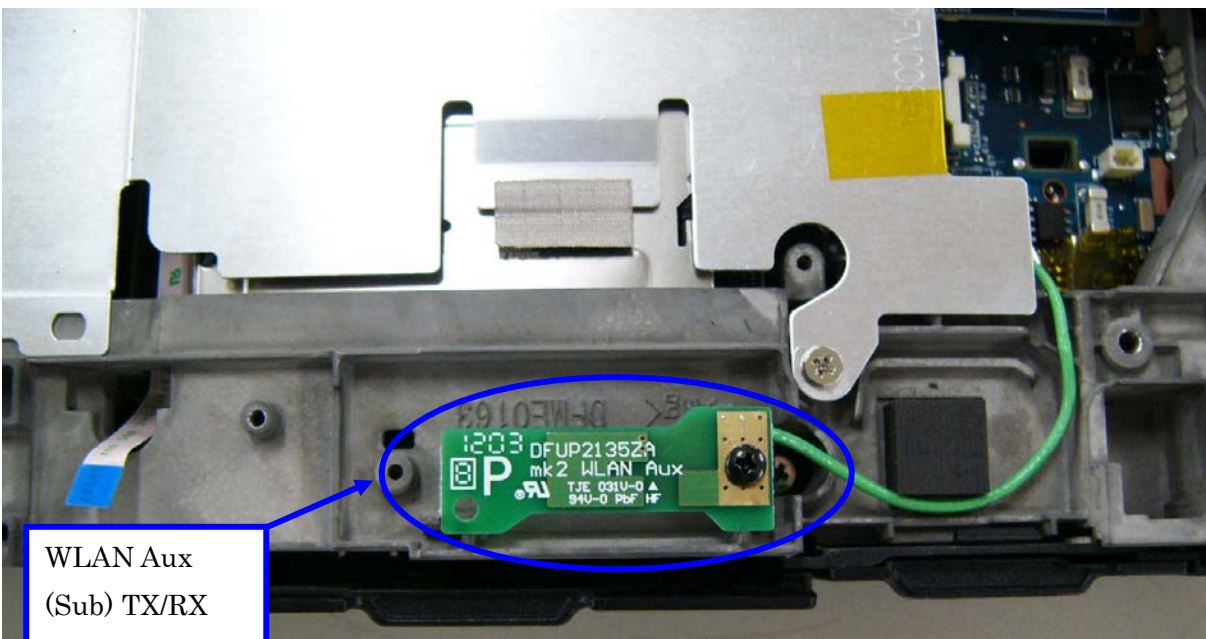


Antenna position from bottom: 46mm

*WLAN Aux(Sub) Antenna position.*



Remove the top case. Angle of 90 degrees right turn.



**Panasonic**

CF-53\_LTE + (GPS)

Antenna Location

Photographs

Note: SAR evaluation of the antenna-to-user distance 46mm and Lap-held configuration is done using the representative Panasonic Laptop PC CF-31 (FCC report: 11J13744-2 and IC report: 11J13744-3 issued by UL CCS). The Class II permissive change is filed on 06/03/2011 (FCC) and on 06/07/2011 (IC). The highest reported near-body SAR values under this composite filing are 2.4GHz: 0.06 W/kg; 5.7 GHz: 0.000057 W/kg; 5.2 GHz: 0.02 W/kg; 5.5 GHz: 0.00116 W/kg.