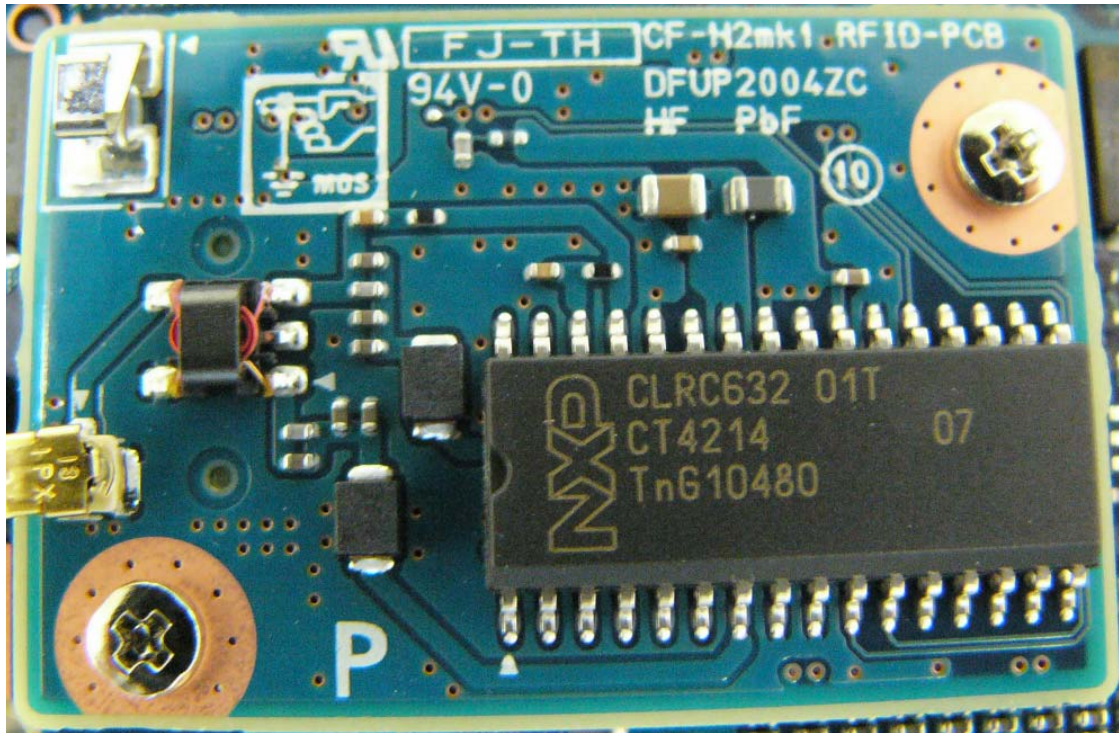
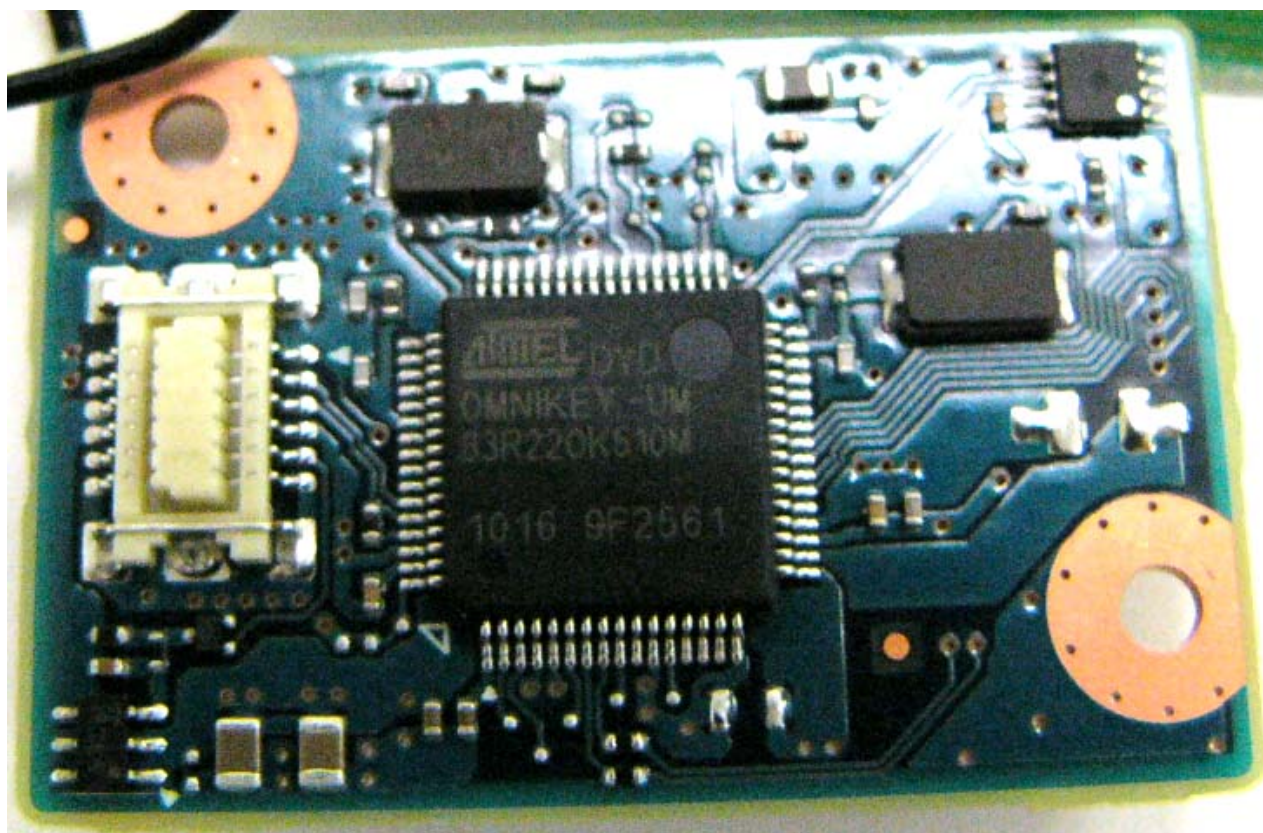


Photographs of Model RI11A (RFID module)

1. Wireless IC side of the module



2. Microcontroller side of the module

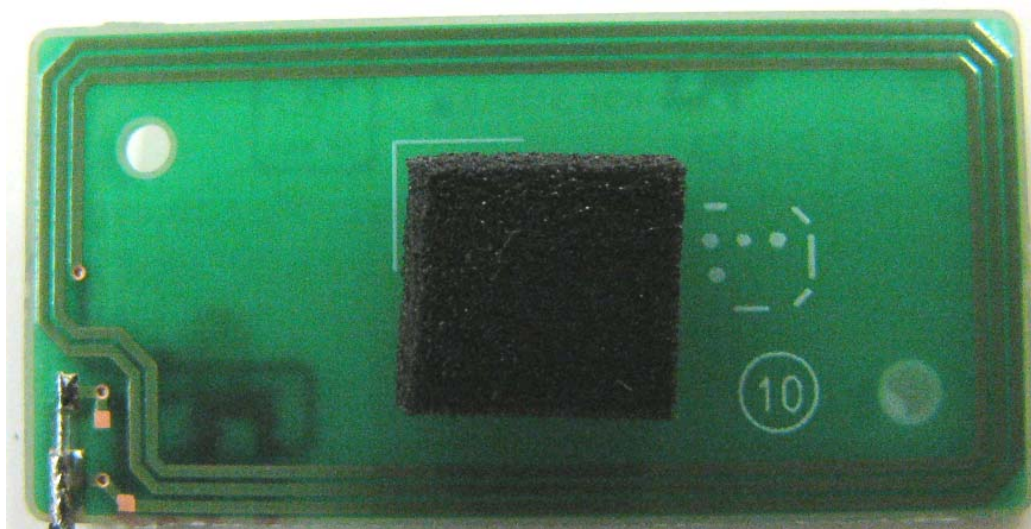


(Size: W:38.2 x D:25.0 x H:7.5 mm)

3. Loop Antenna (Parts side)

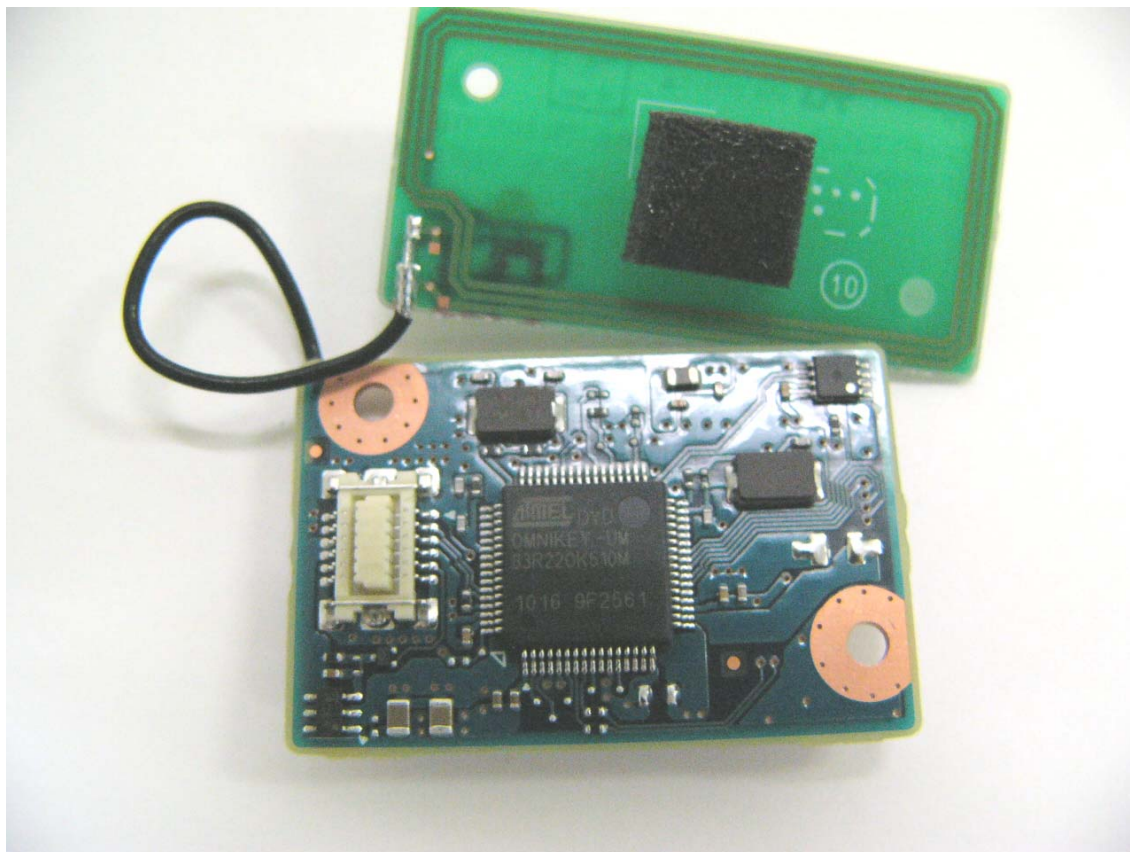


4. Loop Antenna (Solder side)



Photographs of connection between RFID module Model. RI11A and its antenna

1. Solder side of the antenna cable (Microcontroller side of the RFID module)



2. Parts side of the antenna (RF connector side of the RFID module)

