

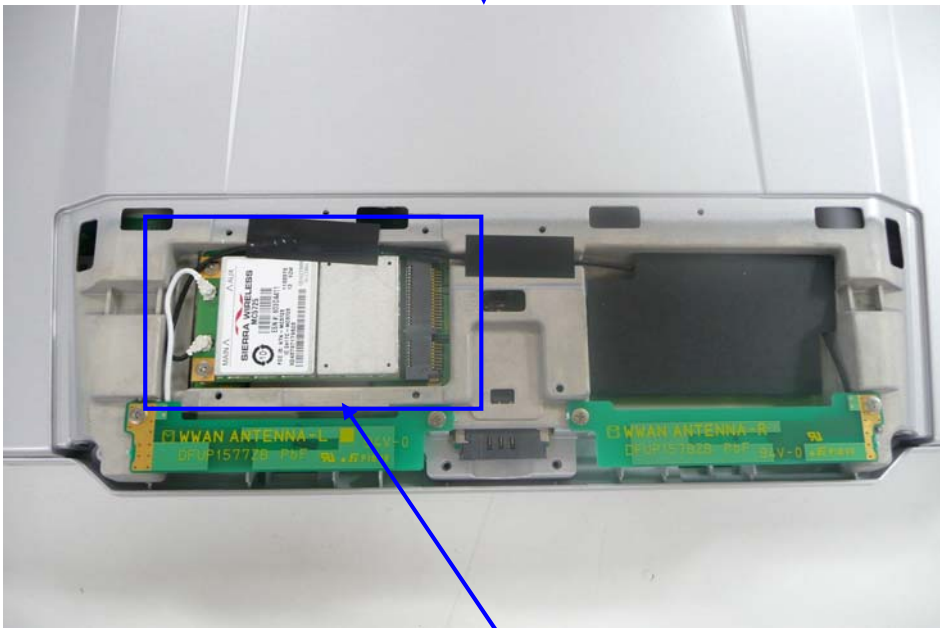
2. Module Position



BlueTooth Module
(Reverse side of PWB)

WLAN Module





EVDO Rev.A Module

3. Module Photo

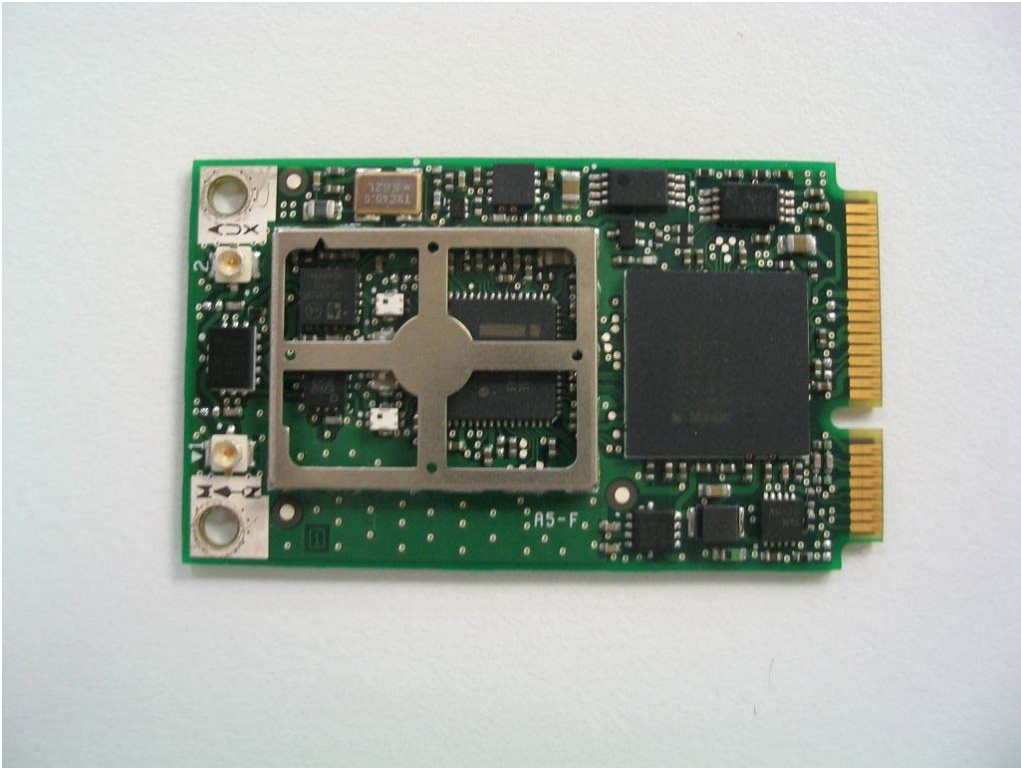
1) WLAN



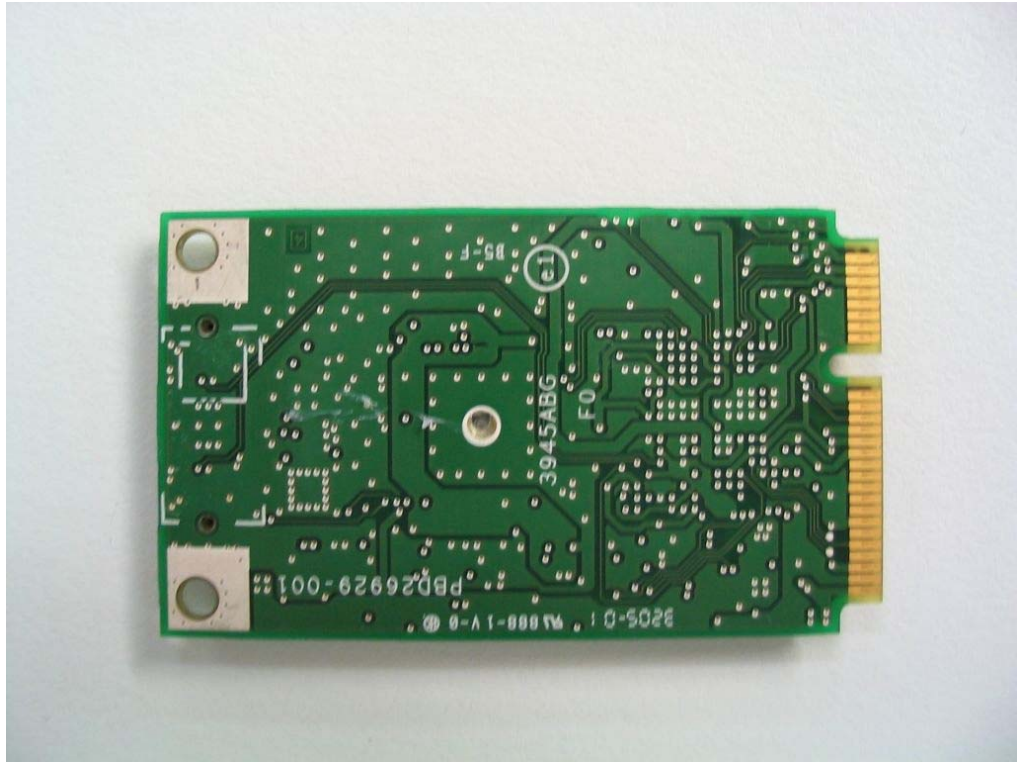
WLAN Exterior Top View



WLAN Exterior Bottom View



WLAN inside Top View



WLAN inside Bottom View

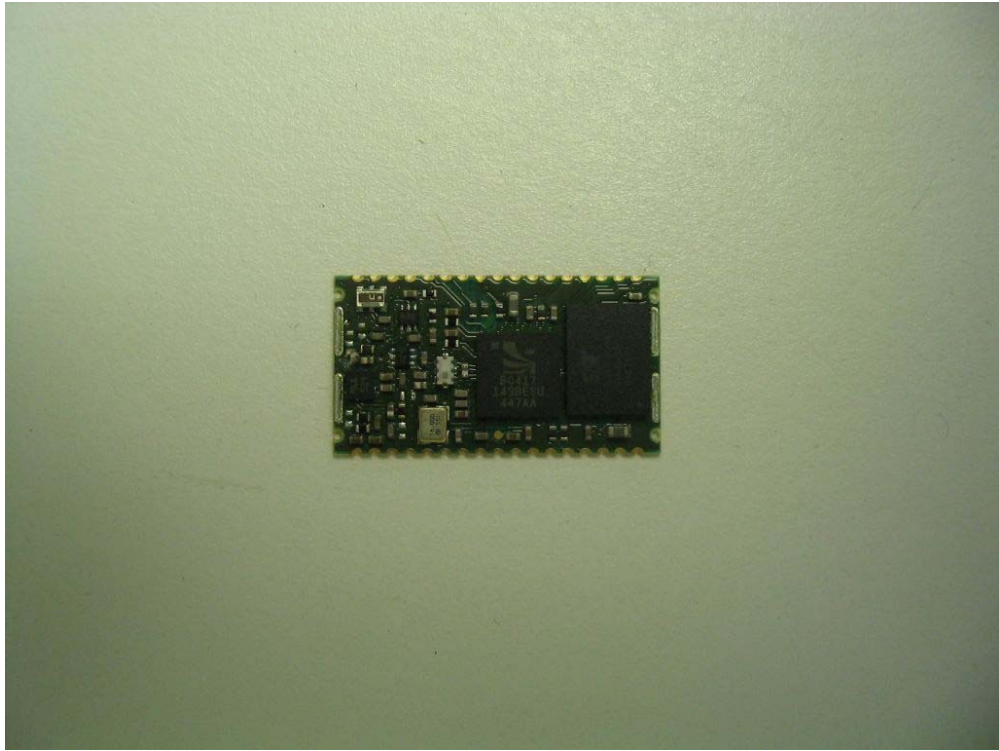
2) BlueTooth



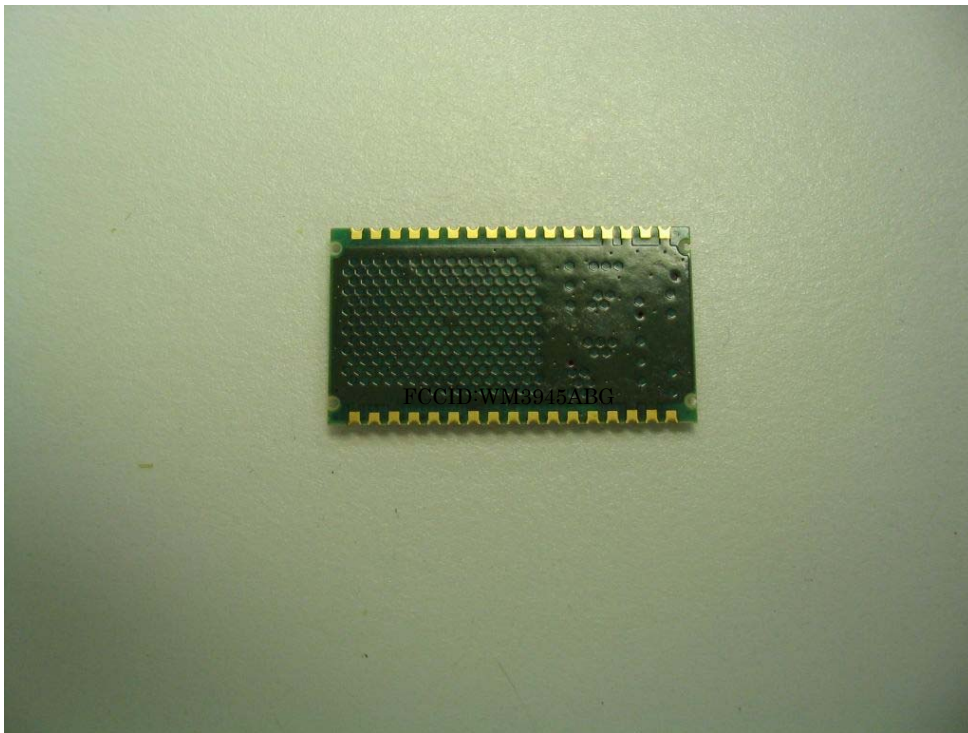
BlueTooth Card Top View



BlueTooth Card Bottom View



BlueTooth Module inside Top View



BlueTooth Module inside Bottom View

3) EVDO Rev.A Photo



EVDO Top View



EVDO Bottom View



EVDO Inside Top View



EVDO Inside Bottom View

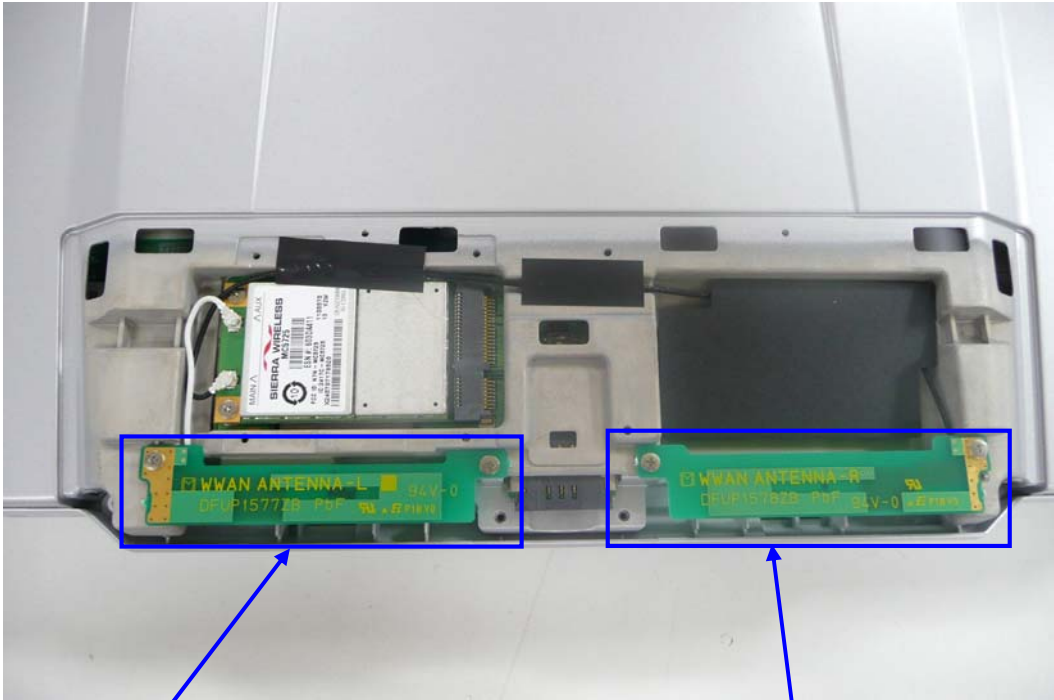
4) Antenna Position

WLAN Aux TX/RX Antenna

BlueTooth TX/RX Antenna



WLAN Main TX/RX Antenna



EVDO Aux RX only
Antenna

EVDO Main TX/RX
Antenna



WLAN Main TX/RX Antenna



WLAN AUX TX/RX Antenna



BlueTooth TX/RX Antenna



EVDO Main TX/RX Antenna



EVDO AUX RX only Antenna

5) Antenna Specification

| | |
|--------------------------|--|
| WLAN Main TX/RX Antenna: | Inverted-F type: 2.00dBi(2.4GHz)max 4.17dBi(5GHz) max |
| WLAN Aux TX/RX Antenna: | Inverted-F type: 2.89dBi(2.4GHz)max 4.64dBi(5GHz) max |
| BlueTooth Antenna: | Inverted-F type: 4.38dBi max |
| EVDO Main TX/RX Antenna: | Inverted-F type:2.50dBi max |
| EVDO Aux TX/RX Antenna: | Inverted-F type:RX only |