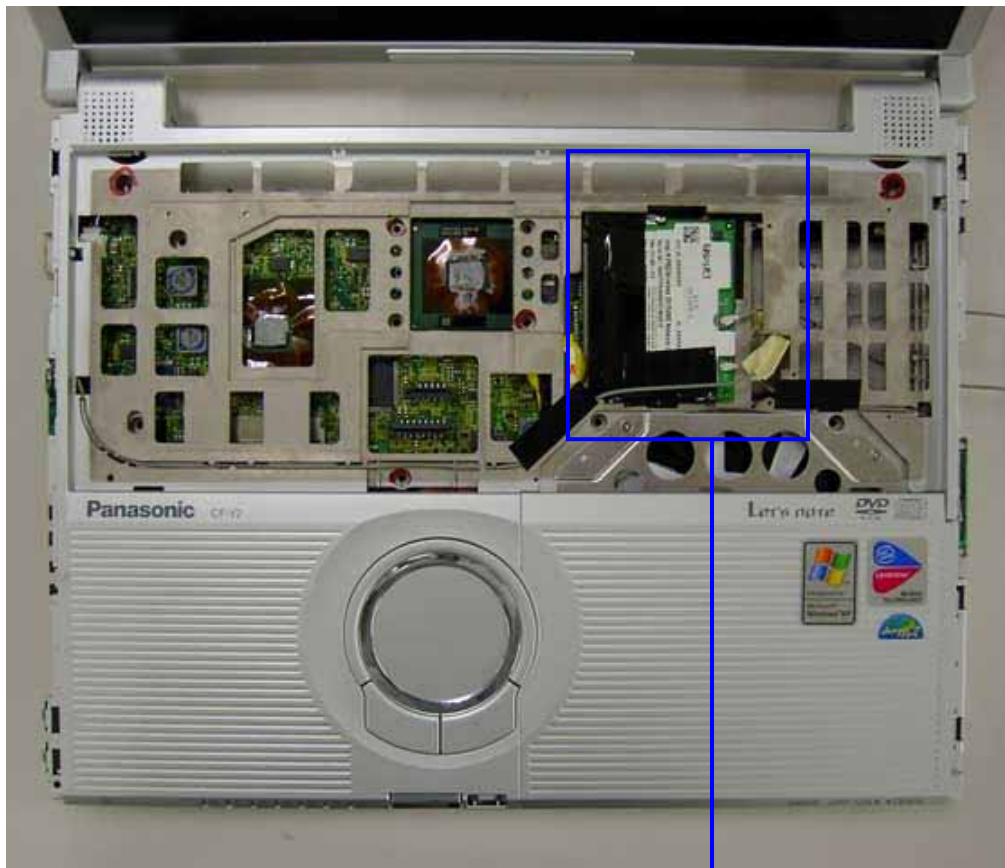


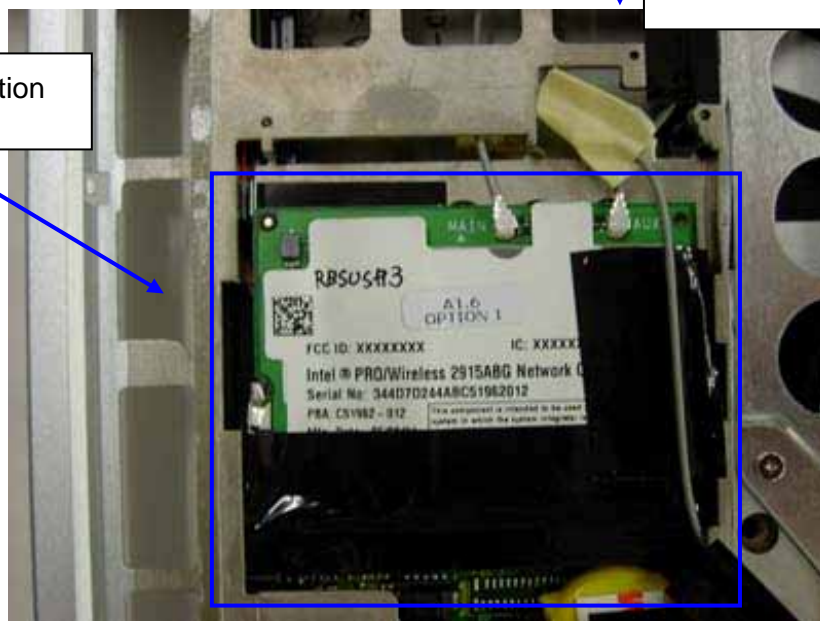
2) WLAN Card position



Inside view

Rotate 90deg anticlockwise

WLAN Card Position



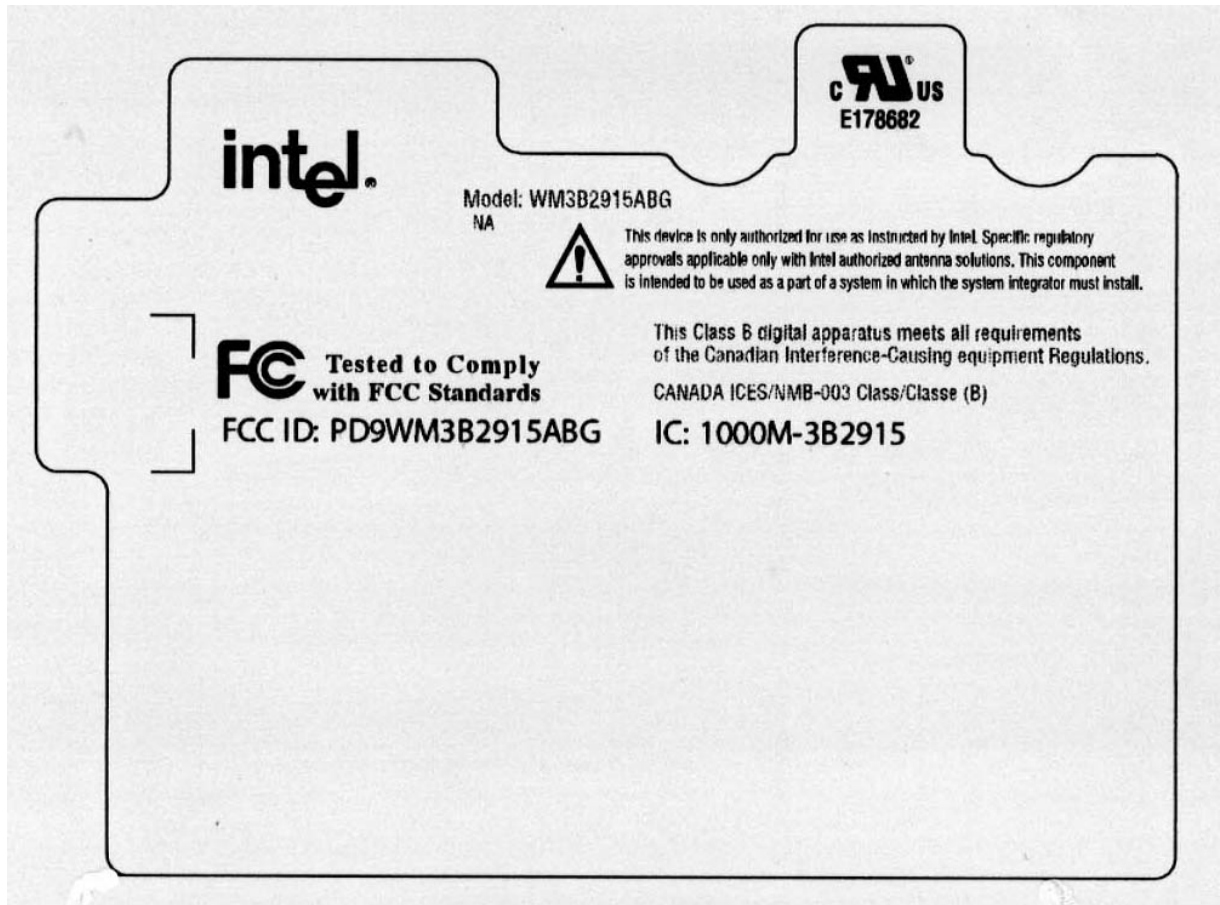
Magnified inside view

3) WLAN exterior photo



WLAN Top View

*The Rating Plate of above photo is not final. See hereinafter Rating Plate design.





WLAN Bottom View

4) WLAN interior photo



WLAN inside Top View

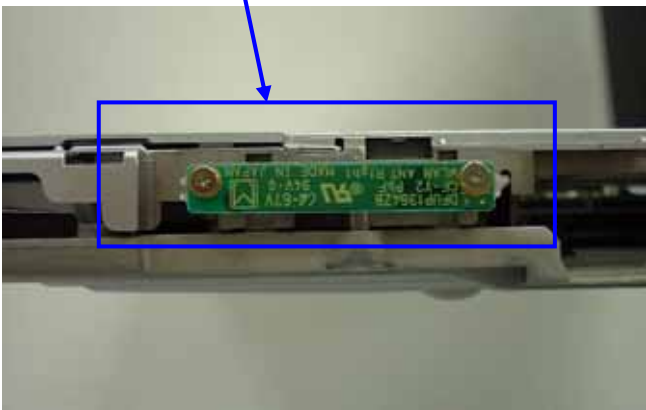


WLAN inside Bottom View

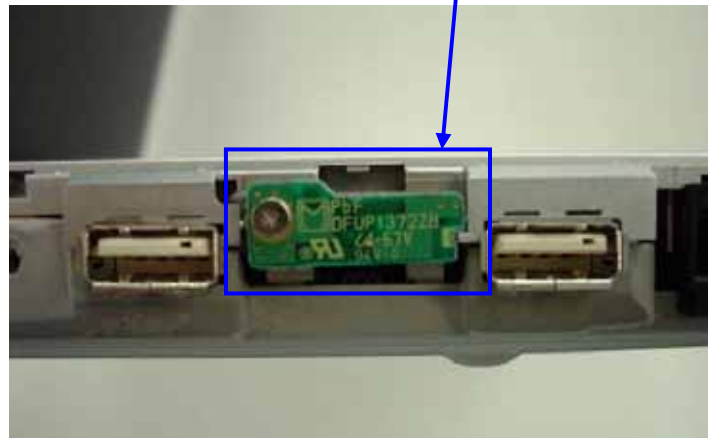
5) Antenna position



Bottom cover open view



Main TX/RX Antenna Magnified View



Aux TX/RX Antenna Magnified View

6) Antenna Specification

Main Tx/Rx Antenna: Inverted F type 1.54dBi max

Aux Tx/Rx Antenna: Inverted F type 2.16dBi max

*Note: WLAN antenna is diversity antenna.