

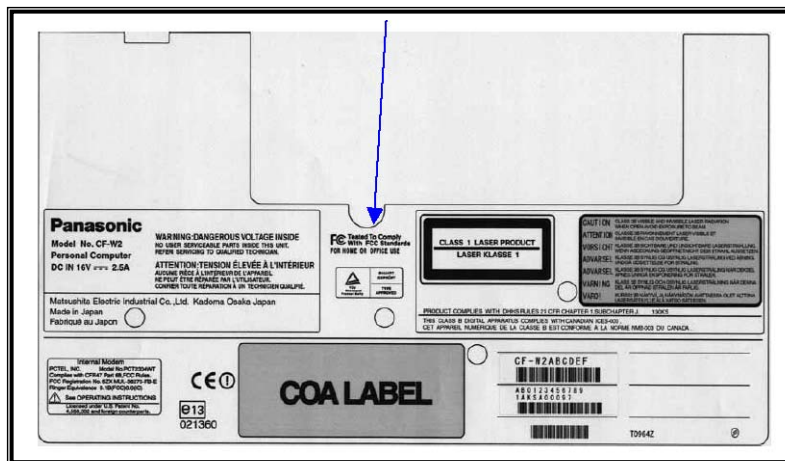
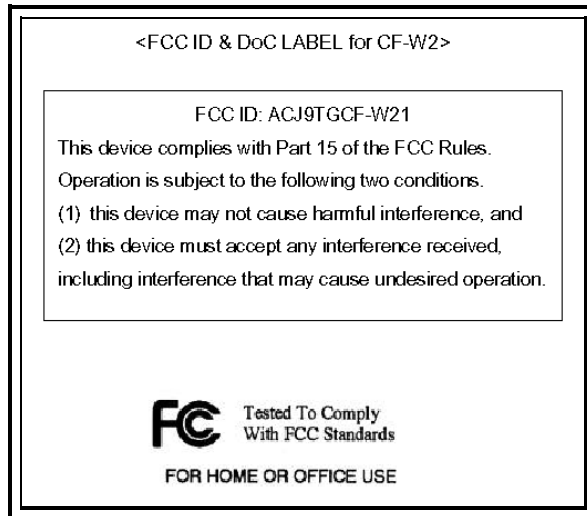
EXHIBIT B – Labeling Requirements

Sample Label & Location

New Labeling Requirements

Per 2.1074 & 15.19; Docket 95-19

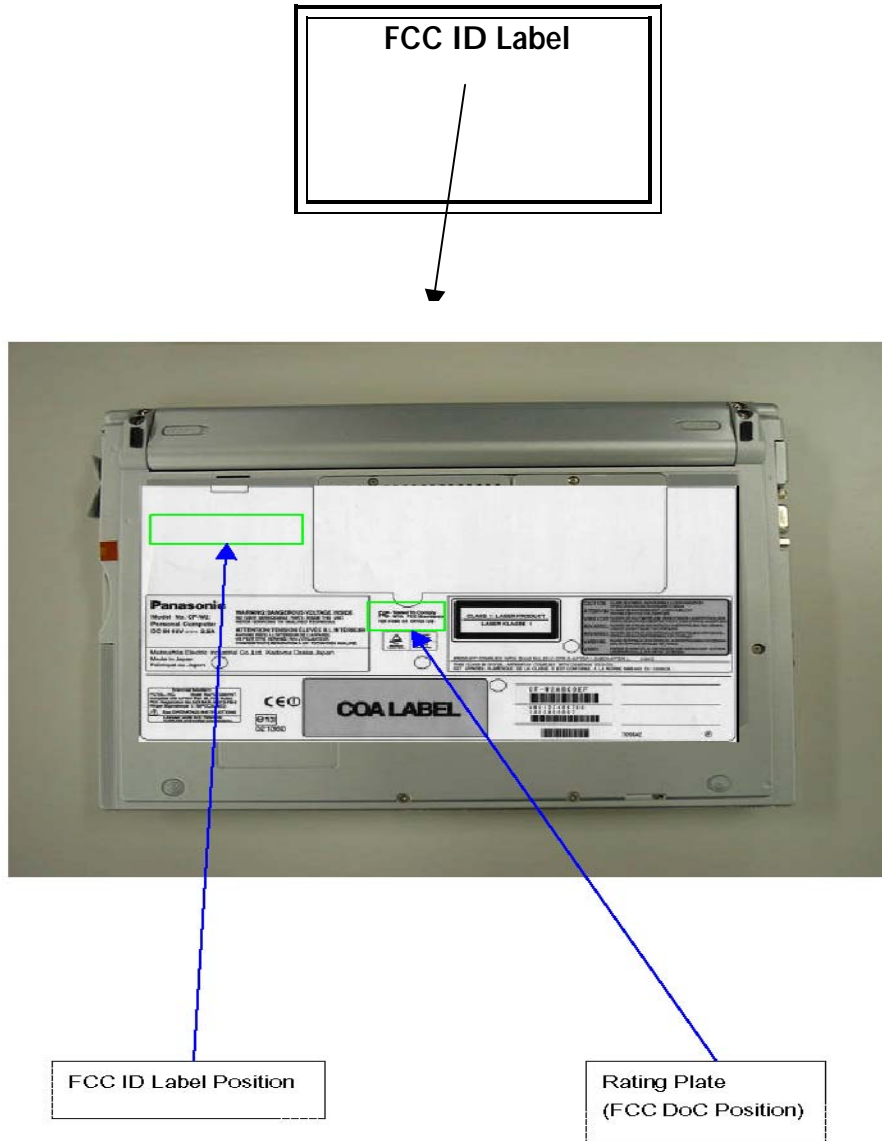
The sample label shown below shall be permanently affixed at a conspicuous location on the device; instruction manual or pamphlet supplied to the user and be readily visible to the purchaser at the time of purchase. However, when the device is so small wherein placement of the label with specified statement is not practical, only the trade name, FCC ID, and the FCC logo must be displayed on the device per Section 15.19 (b)(2).





PCTEST LAB TEST REPORT Part 15.247	PCTEST ENGINEERING LAB., INC.	FCC MEASUREMENT REPORT	Panasonic	Reviewed by: Quality Manager
Filename: 15_230519278.ACJ	Test Dates: May 29-30, 2003	EUT Type: Panasonic Toughbook CF-W2 w/ Intel Mini PCI WLAN	FCC ID: ACJ9TGCF-W21	Page 37 of 45

EXHIBIT B – Labeling Requirements (Cont.)

Sample Label & Location



PCTEST LAB TEST REPORT Part 15.247	 PCTEST ENGINEERING LAB., INC.	FCC MEASUREMENT REPORT		Reviewed by: Quality Manager
Filename: 15_230519278.ACJ	Test Dates: May 29-30, 2003	EUT Type: Panasonic Toughbook CF-W2 w/ Intel Mini PCI WLAN	FCC ID: ACJ9TGCF-W21	Page 38 of 45