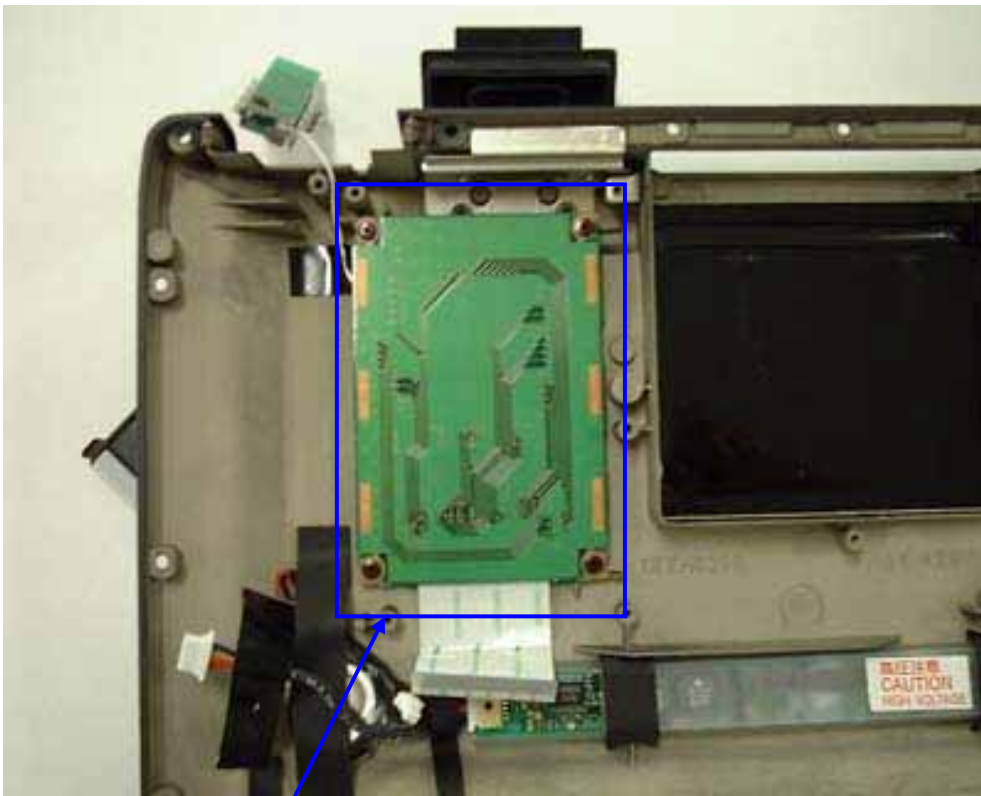




CF-VDW07 Inside View (Bottom Cover open)



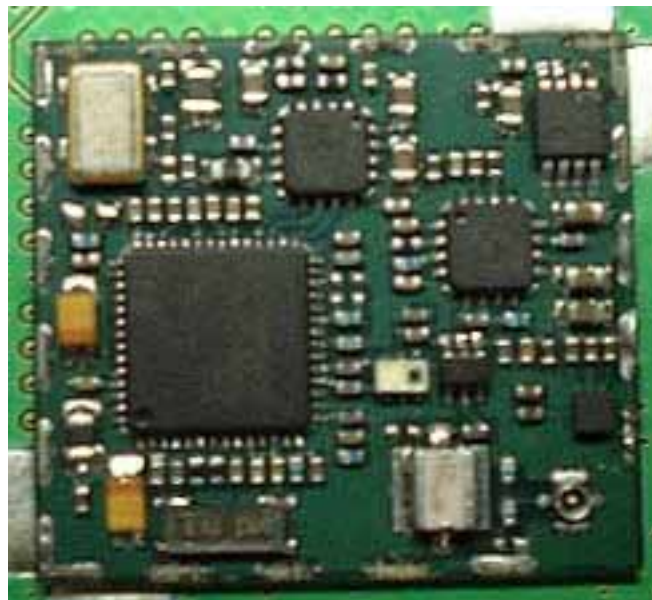
WLAN Daughter Board Bottom View (Main PWB and Metal Cover removed)

2) WLAN module with Daughter Board (Exterior)



WLAN module (SyChip) on Daughter Board

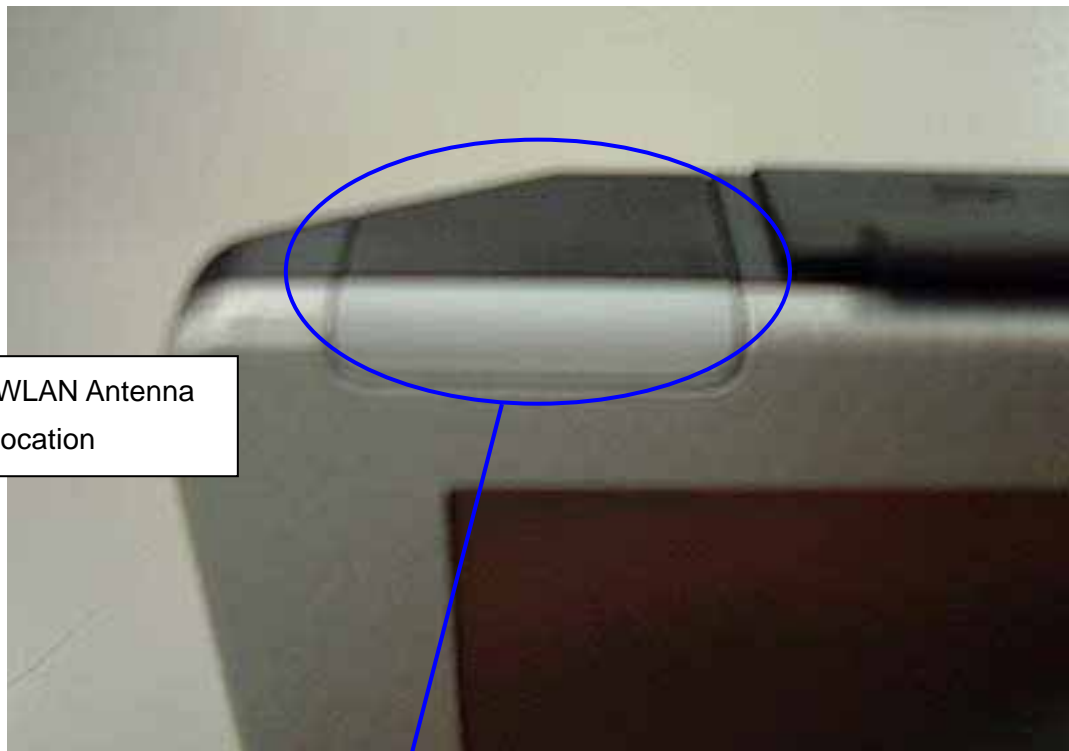
3) WLAN module Interior



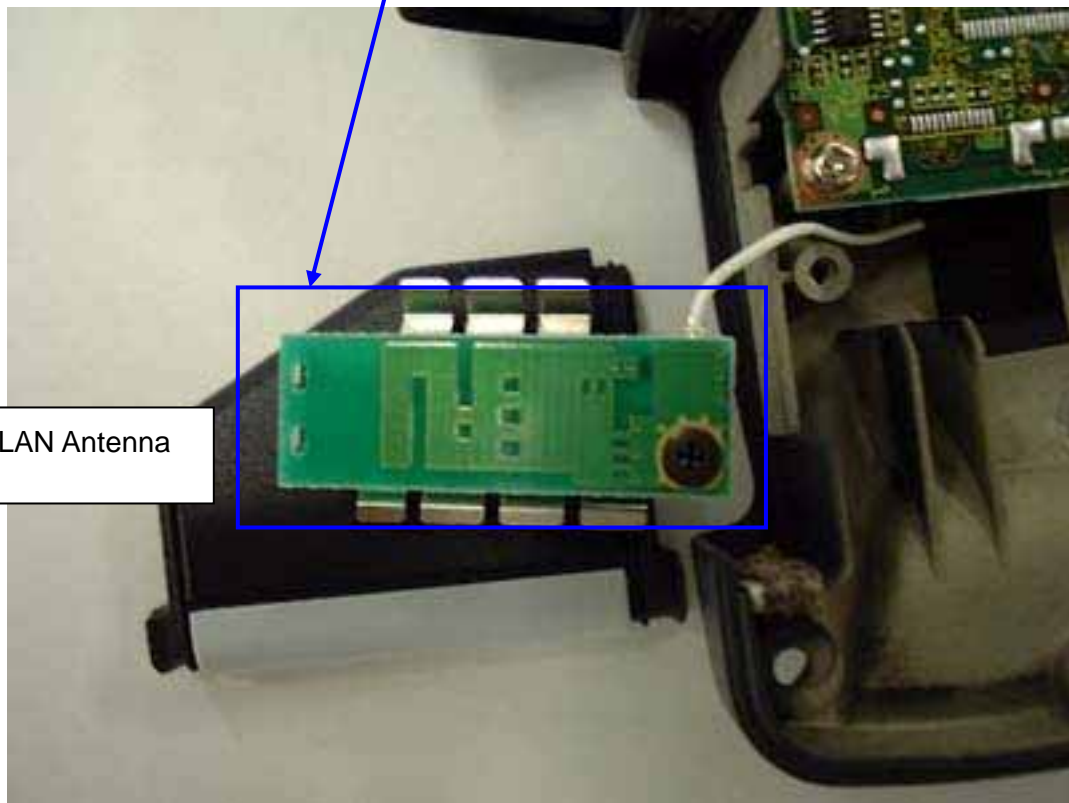
WLAN Top View

Note: WLAN Bottom is no component.

4) Antenna



WLAN Antenna
location



WLAN Antenna

WLAN Antenna Magnified View

5) Antenna Specification

WLAN Antenna: (Inverted F type: 4.68dBi max)

