

2. Module Position



WWAN Module



WLAN Module

Reverse side of
Main PWB



Bluetooth Module

3. Module Photo

1) WLAN (512AN_MMW)



WLAN Exterior Top View



WLAN Exterior Bottom View

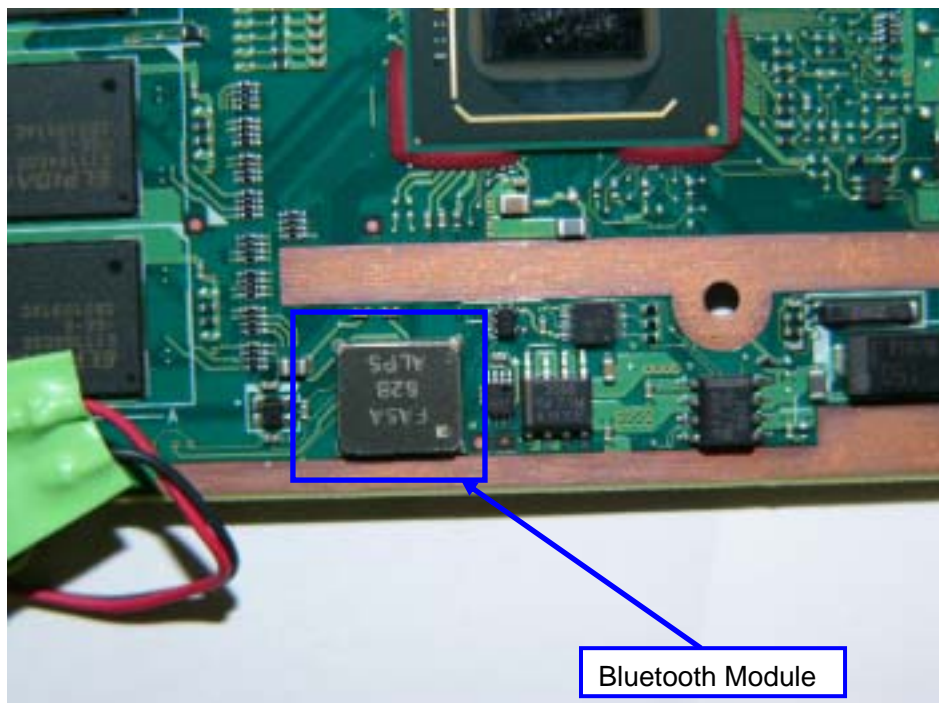
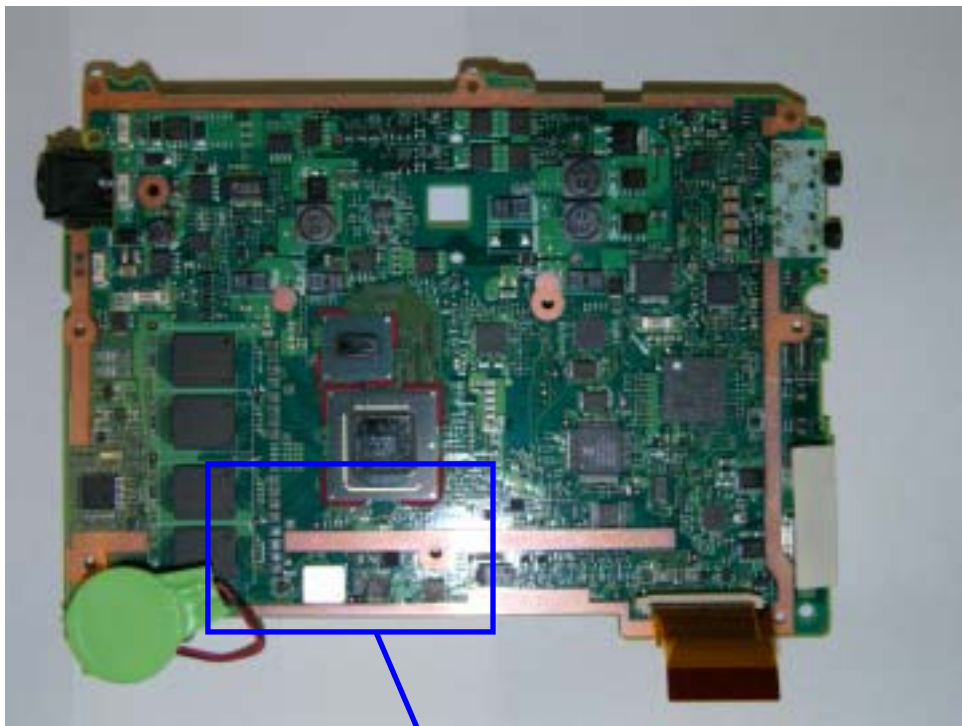


WLAN inside Top View



WLAN inside Bottom View

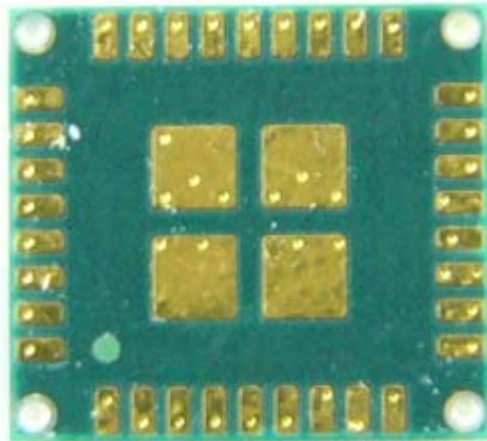
2) Bluetooth (UGNZA)



Bluetooth Top View on Main Board



Bluetooth Module inside Top View



Bluetooth Module inside Bottom View

3) WWAN (AAU)



WWAN Module Top View



WWAN Module Bottom View

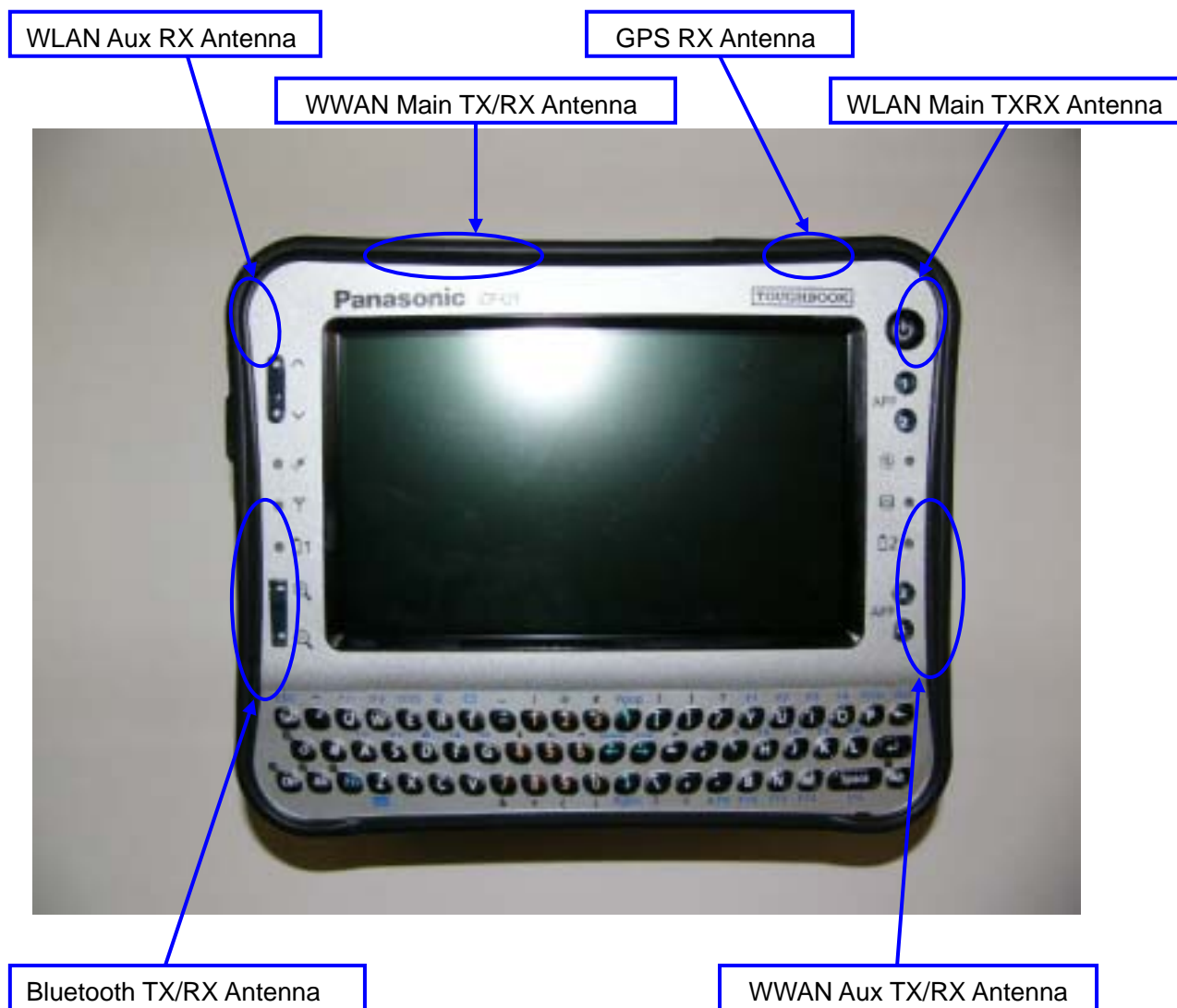


WWAN Module inside Top View



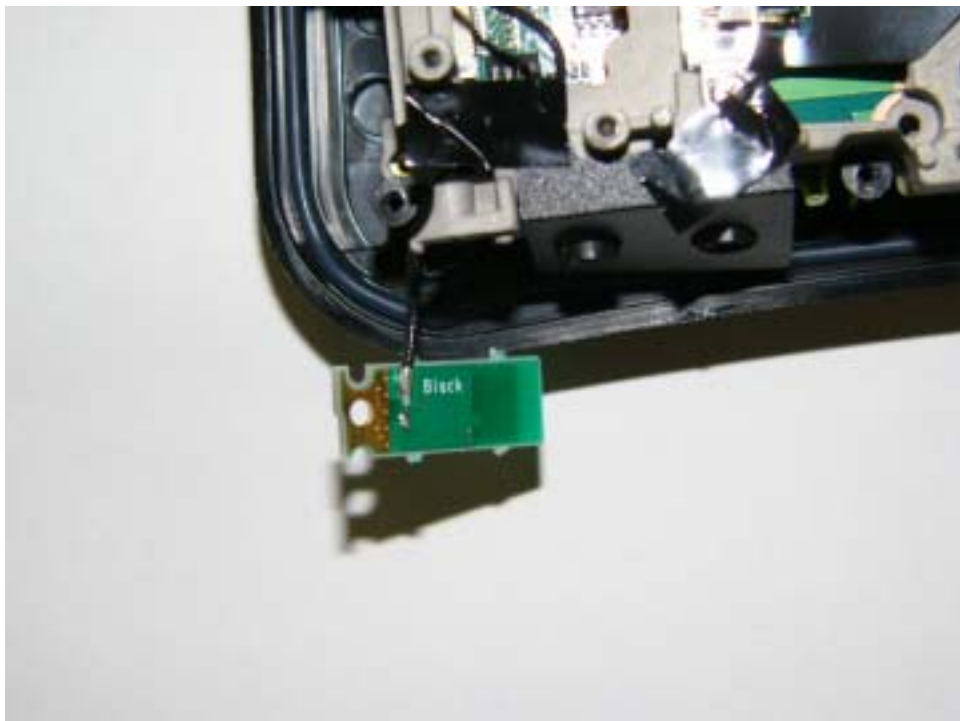
WWAN Module inside Bottom View

4. Antenna Position





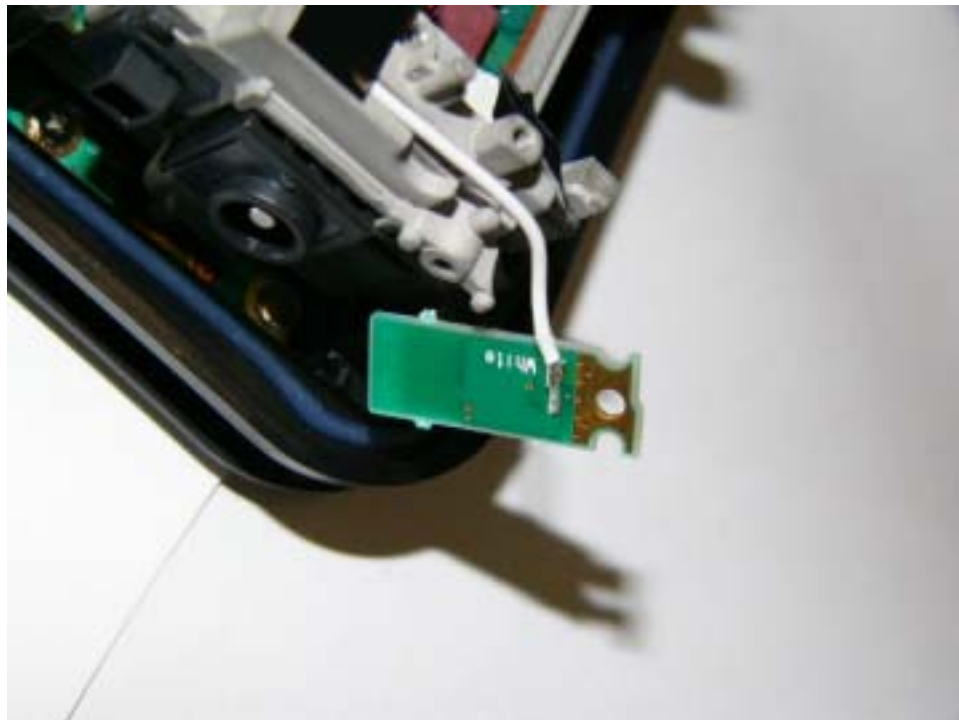
WLAN Main TX/RX Antenna



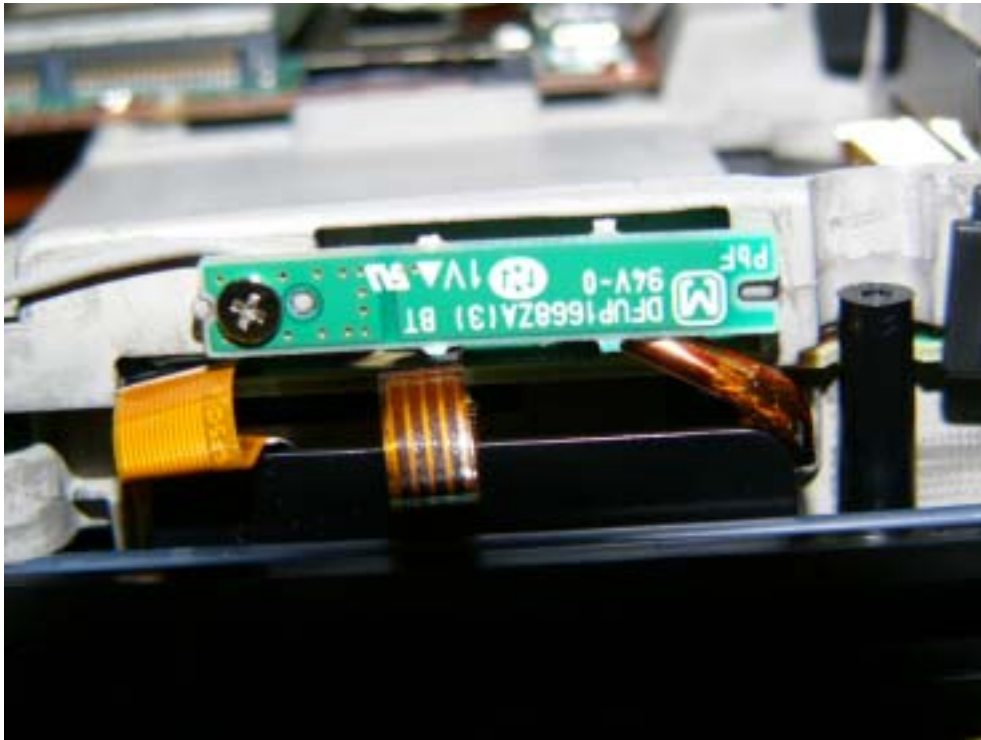
WLAN Main TX/RX Antenna (Reverse side)



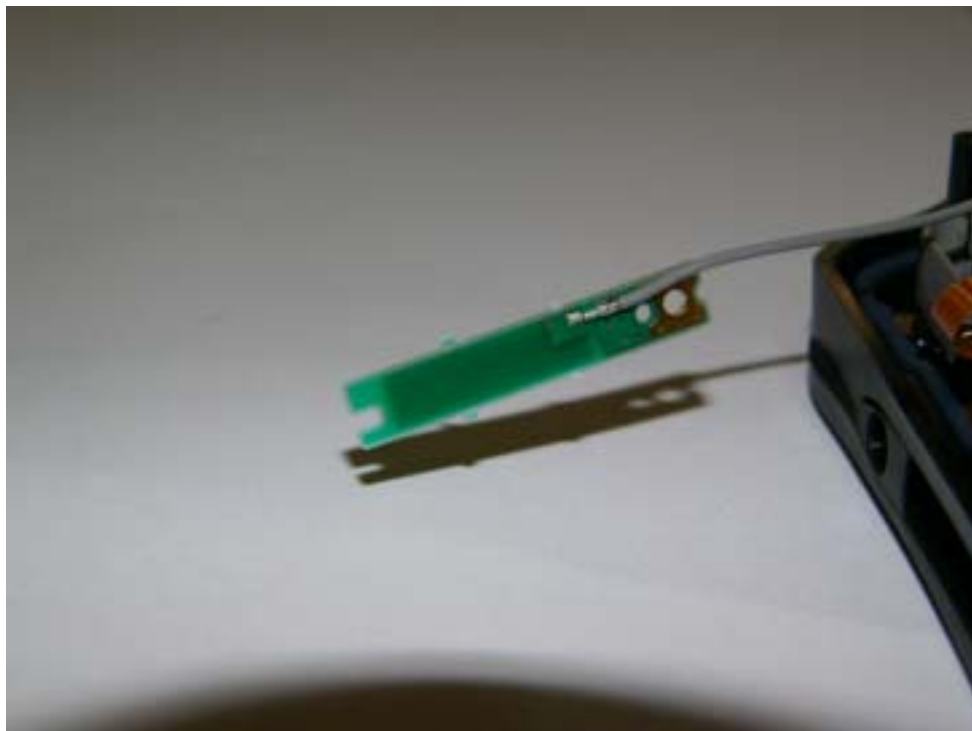
WLAN AUX RX Antenna



WLAN Aux RX Antenna (Reverse side)



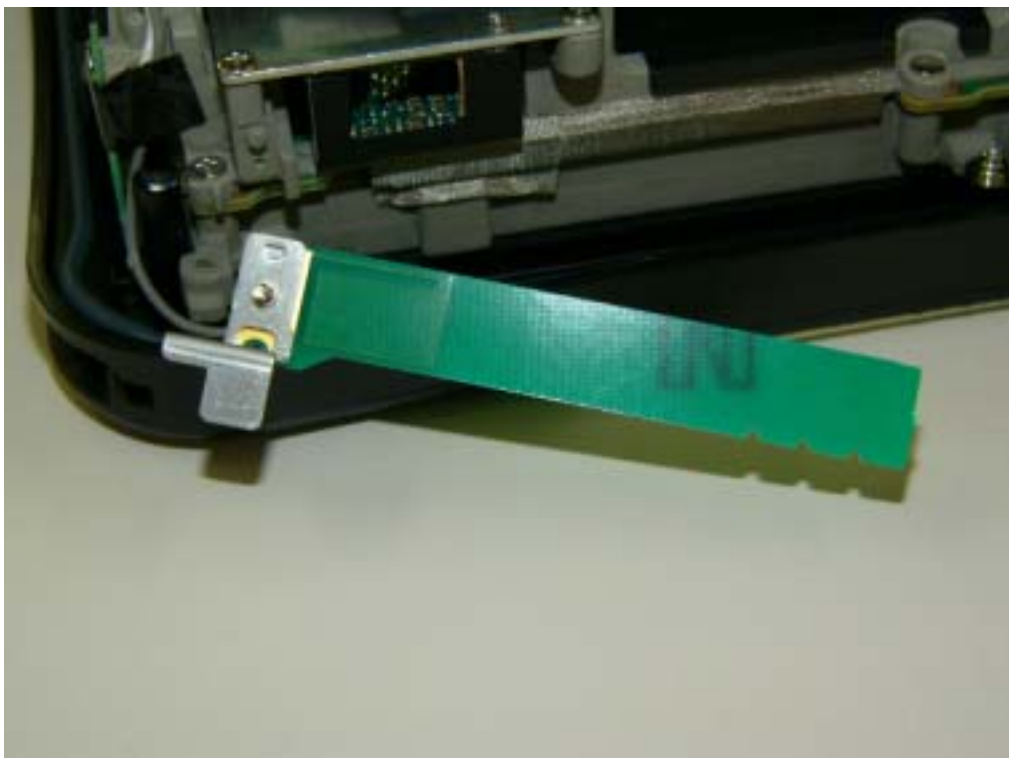
Bluetooth TX/RX Antenna



Bluetooth TX/RX Antenna (Reverse side)



WWAN Main TX/RX Antenna



WWAN Main TX/RX Antenna (Reverse side)



WWAN AUX RX Antenna



WWAN AUX RX Antenna (Reverse side)

5. Antenna Specification

WLAN Main TX/RX Antenna: Pattern Antenna

(Inverted F type: 0.82dBi max):2.4GHz

(Inverted F type: 2.72dBi max): 5.15-5.35GHz

(Inverted F type: 2.99dBi max): 5.47-5.825GHz

WLAN Aux RX only Antenna: Pattern Antenna

Bluetooth TX/RX Antenna: Pattern Antenna

(Inverted F type: -1.35dBi max)

WWAN Main TX/RX Antenna: Pattern Antenna

(Inverted F type: -1.76dBi max):2496MHz-2599MHz

(Inverted F type: -2.01dBi max):2600MHz-2690MHz

WWAN Aux RX only Antenna: Pattern Antenna