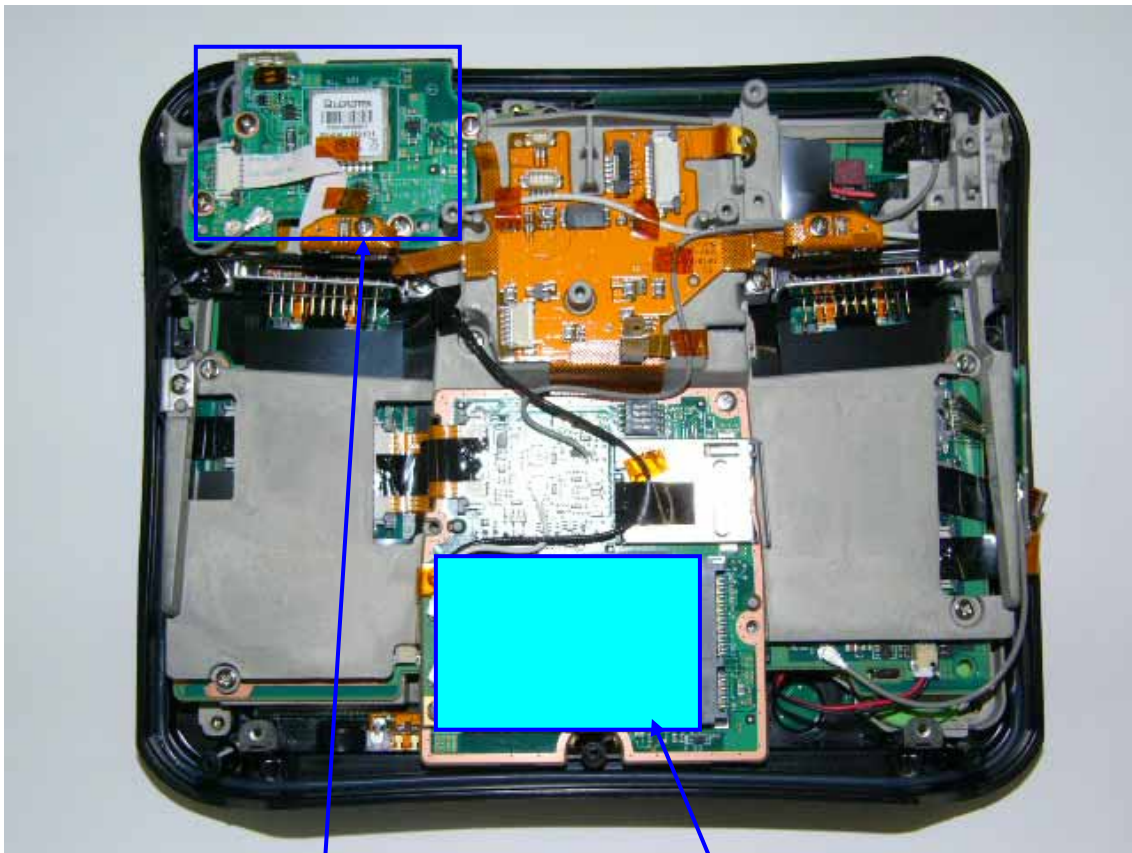
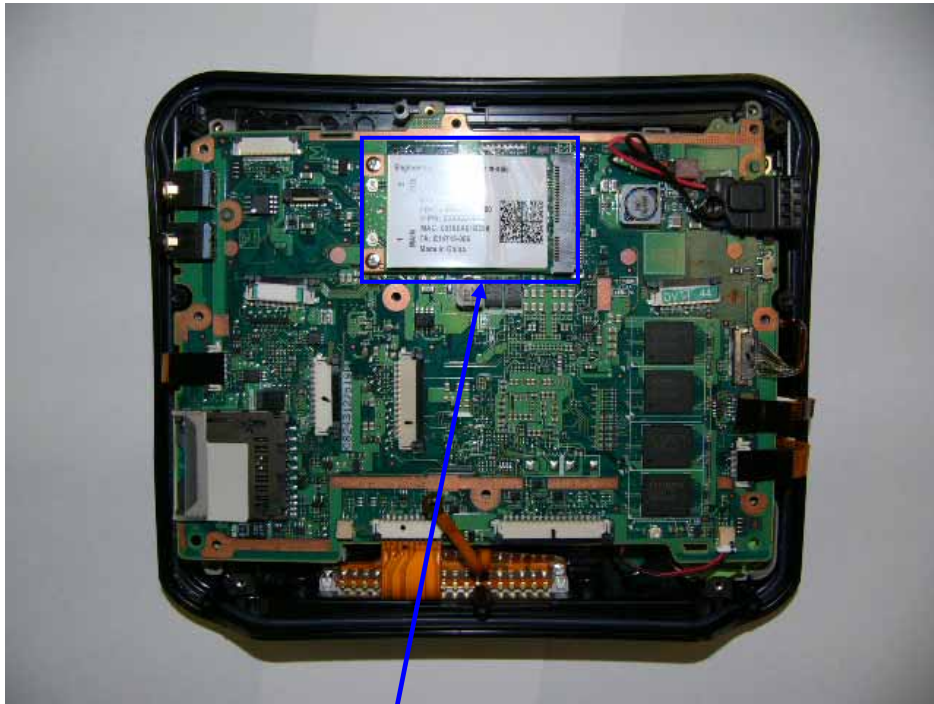


2. Module Position



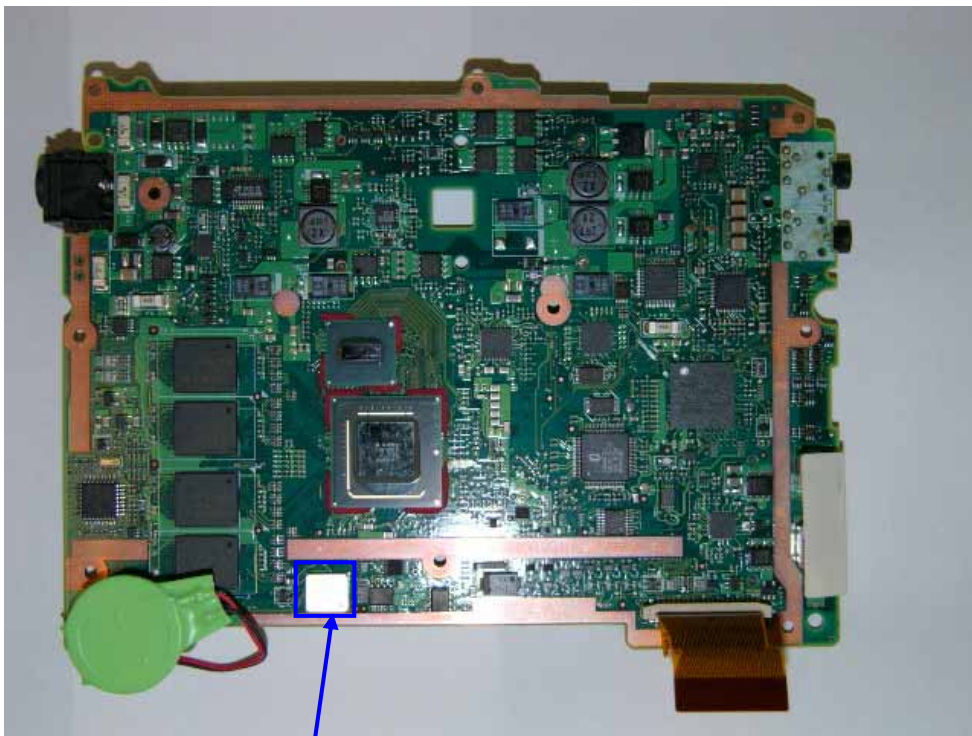
GPS Module

WWAN Module



WLAN Module

Reverse side of
Main PWB



Bluetooth Module

3. Module Photo

1) WLAN (512AN_MMW)



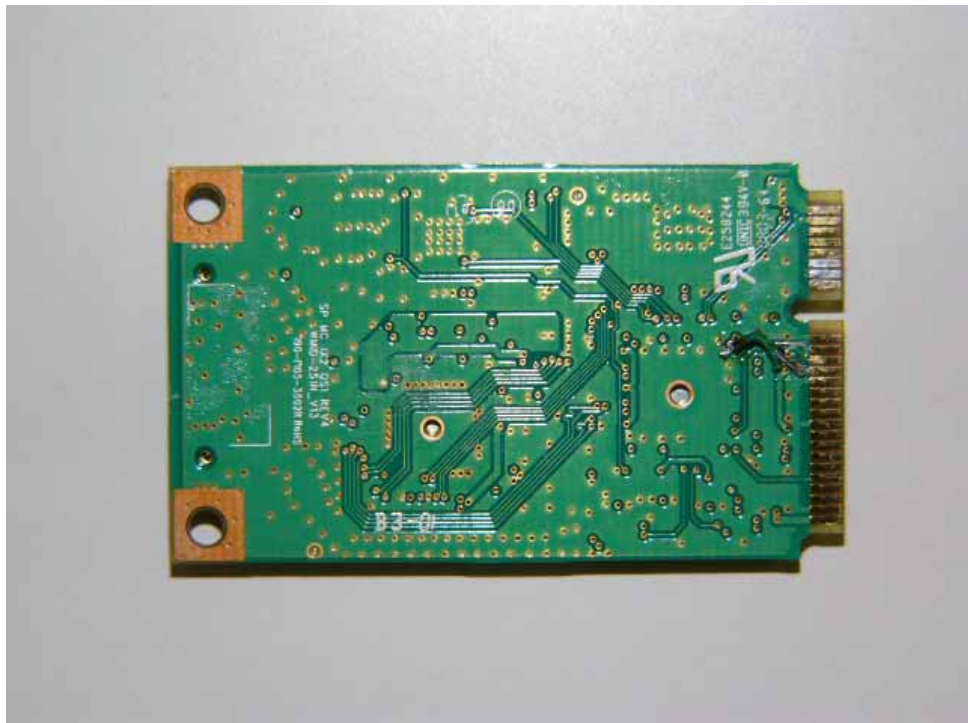
WLAN Exterior Top View



WLAN Exterior Bottom View

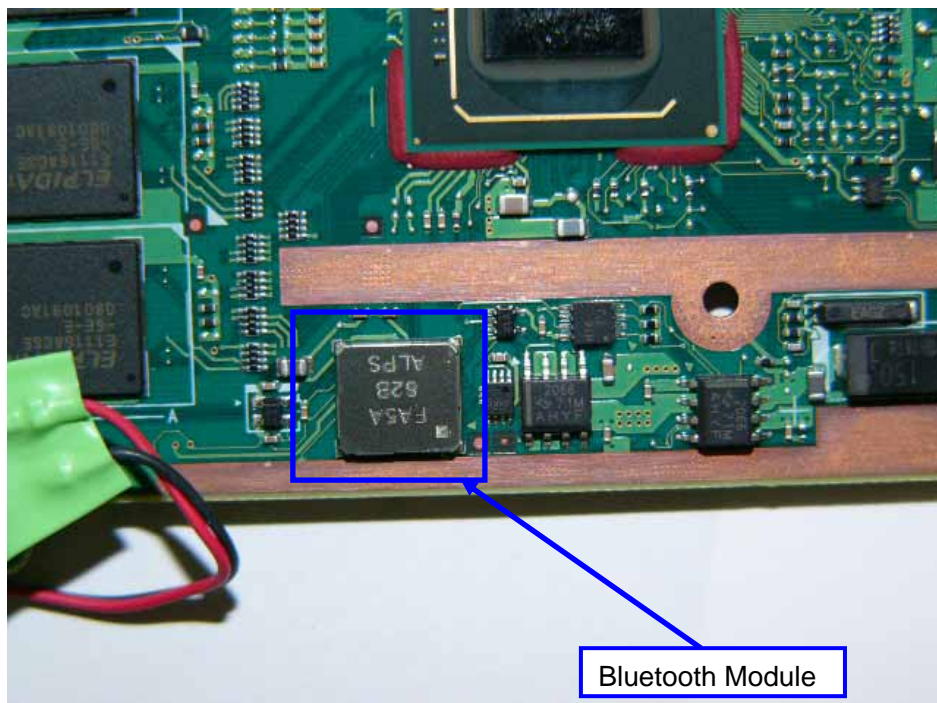
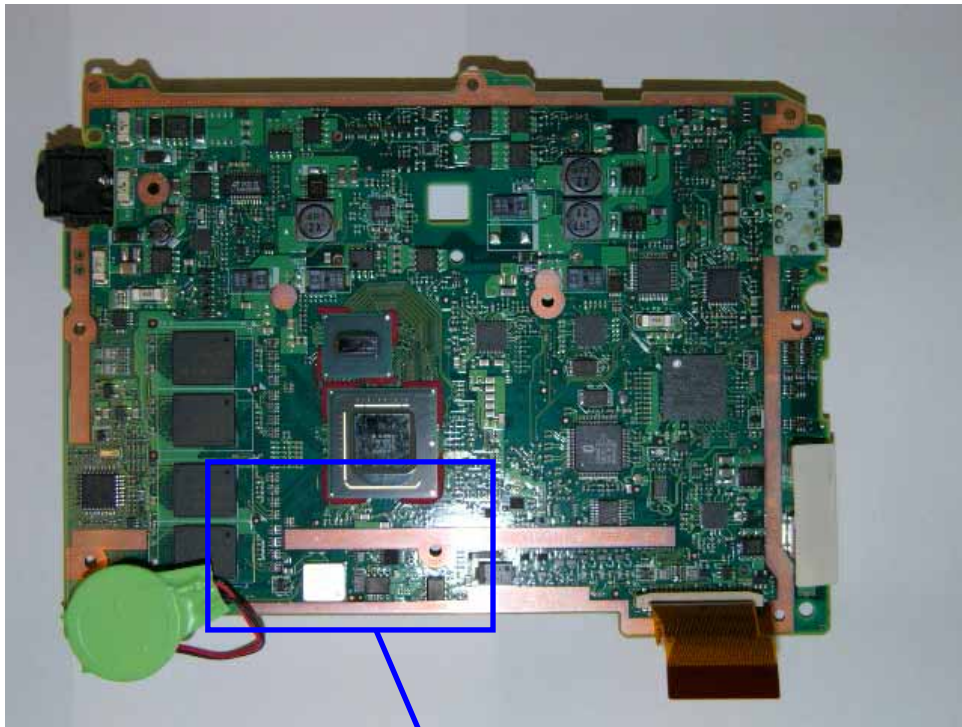


WLAN inside Top View

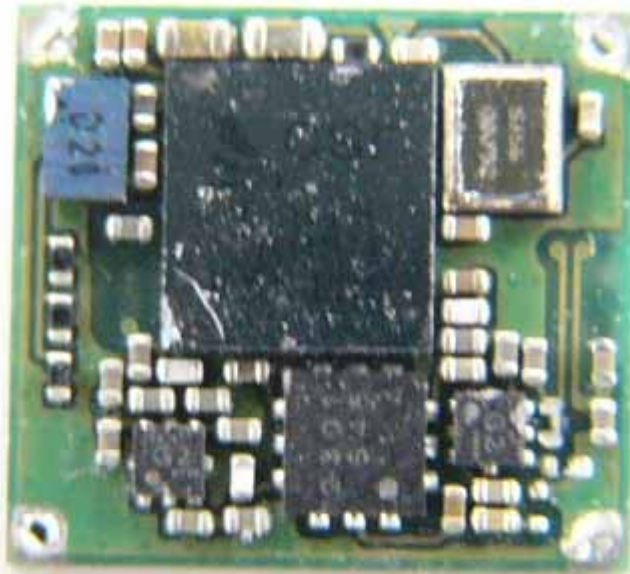


WLAN inside Bottom View

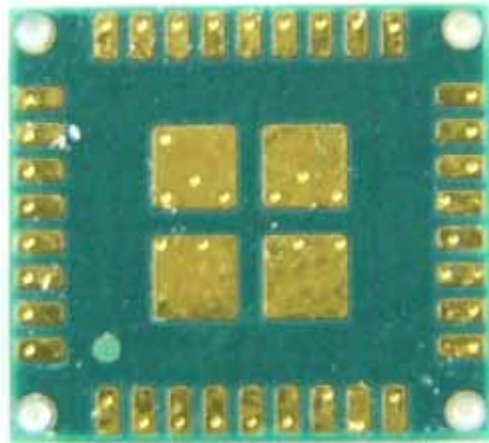
2) Bluetooth (UGNZA)



Bluetooth Top View on Main Board



Bluetooth Module inside Top View



Bluetooth Module inside Bottom View

3) WWAN (UNDP-1)



UNDP-1 Top View



UNDP-1 Bottom View



UNDP-1 inside Top View

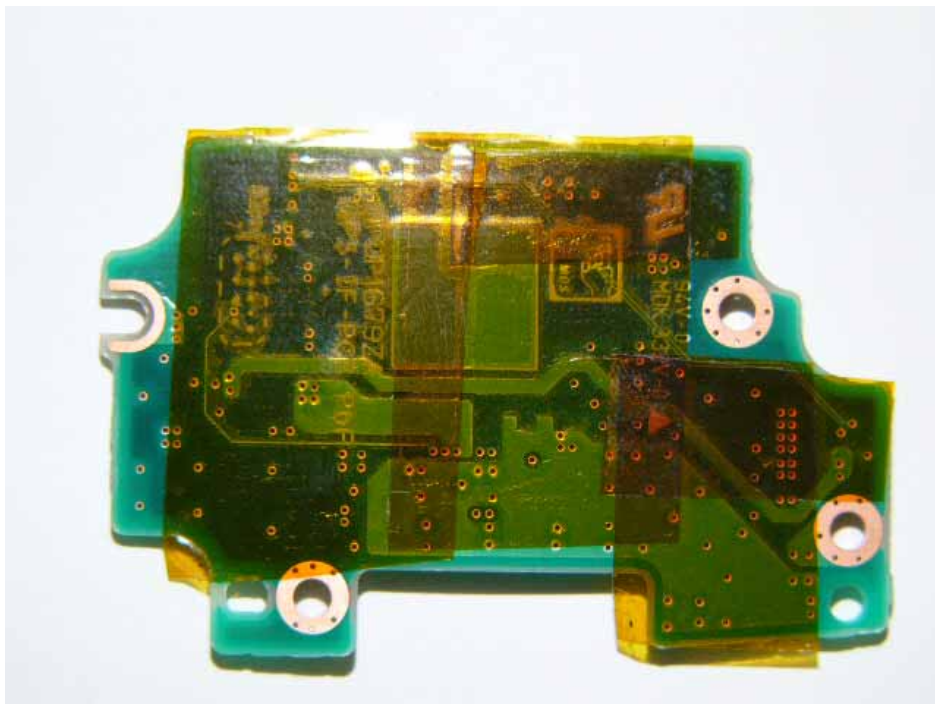


UNDP-1 inside Bottom View

4) GPS (LR9101) Card exterior



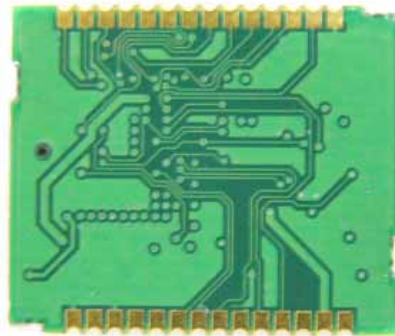
GPS Card Top View



GPS Card Bottom View

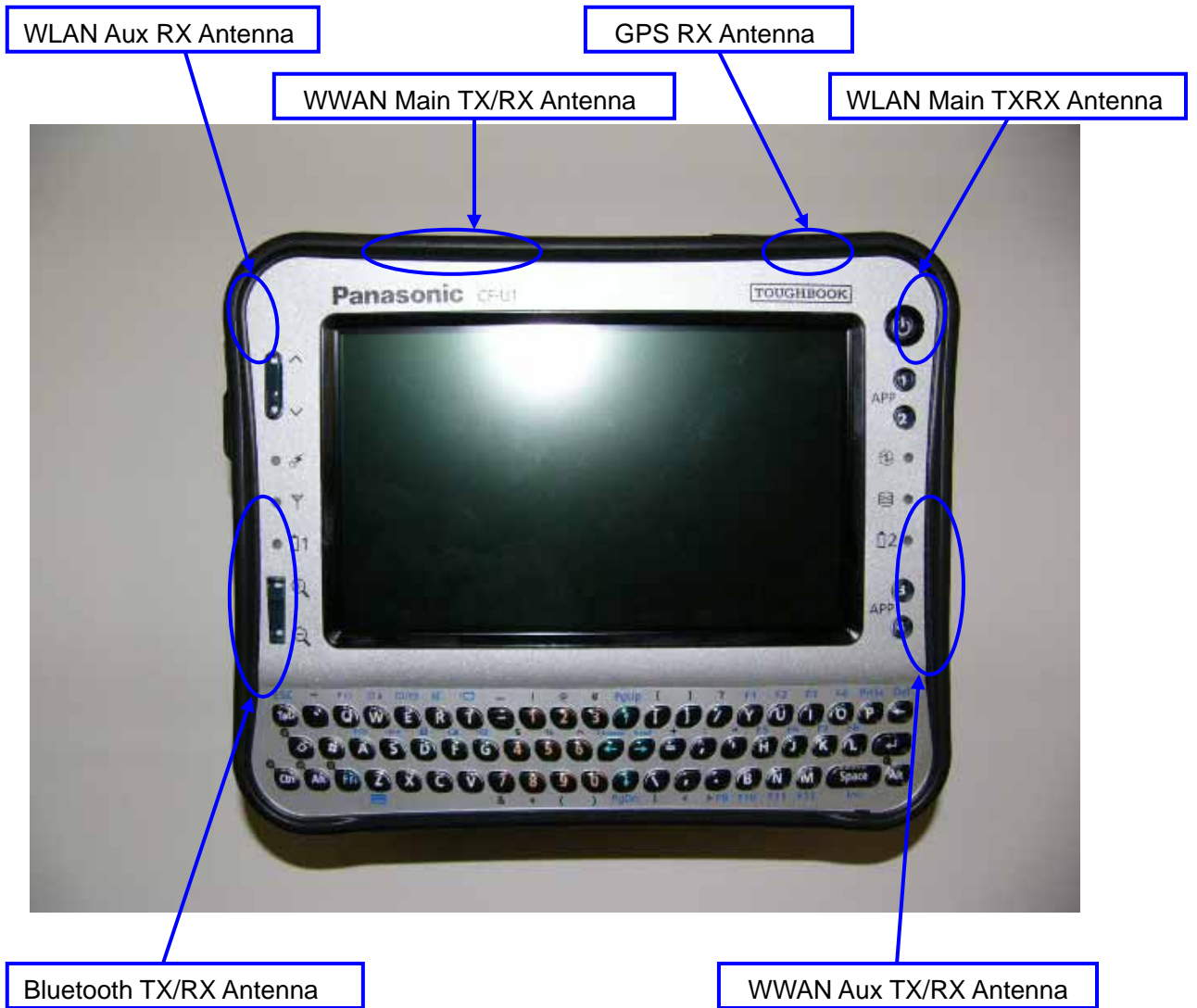


GPS Module inside Top View



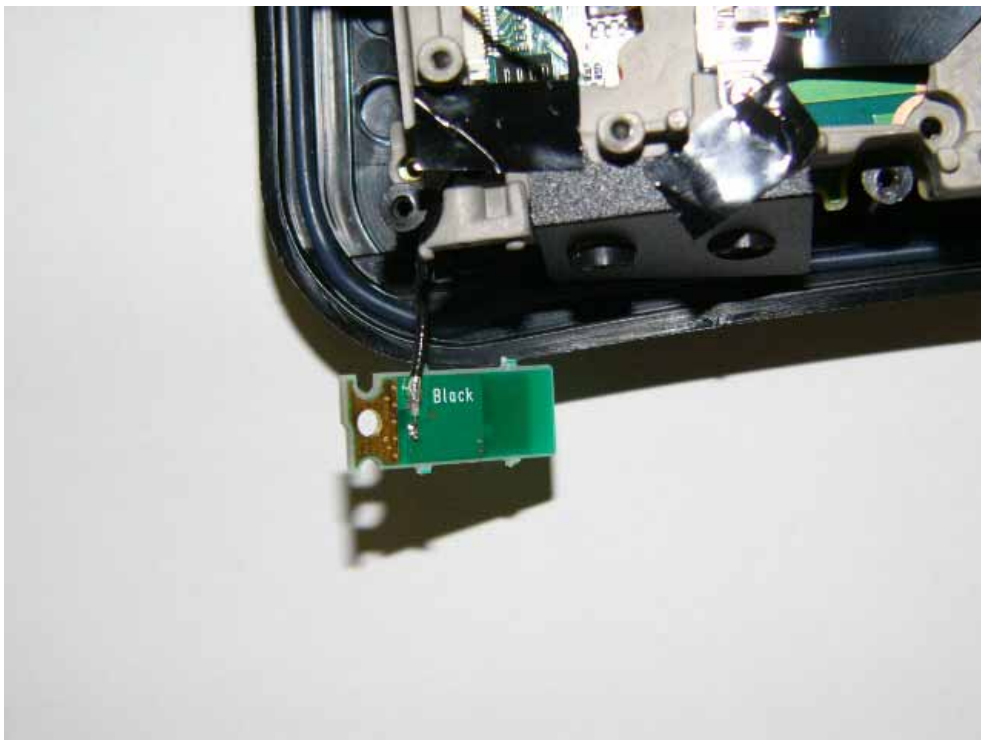
GPS Module inside Bottom View

4. Antenna Position





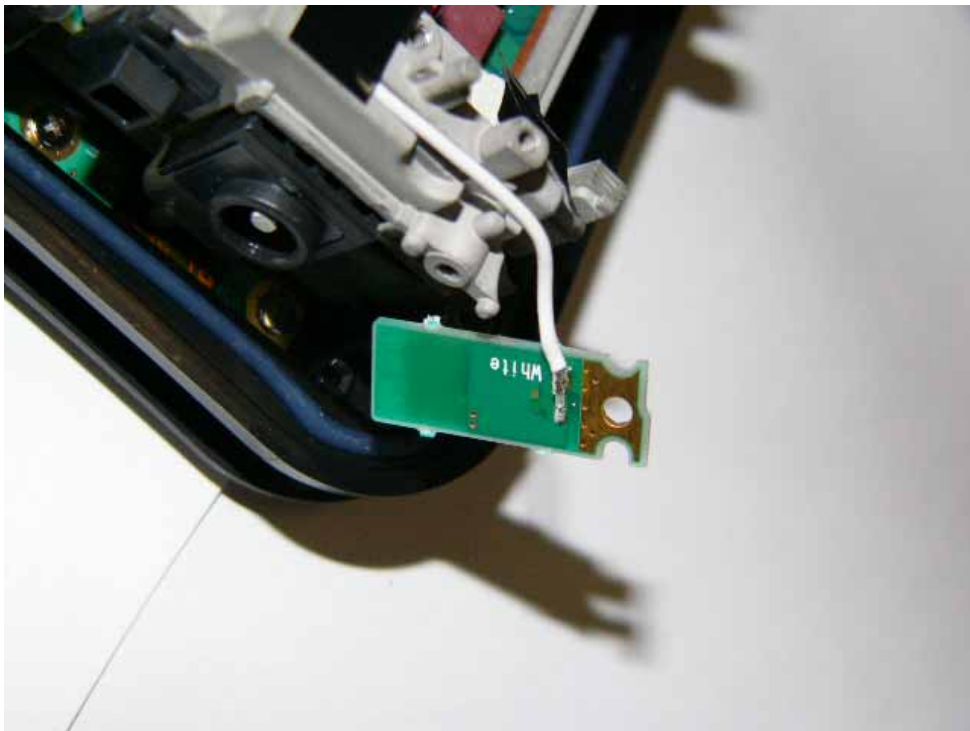
WLAN Main TX/RX Antenna



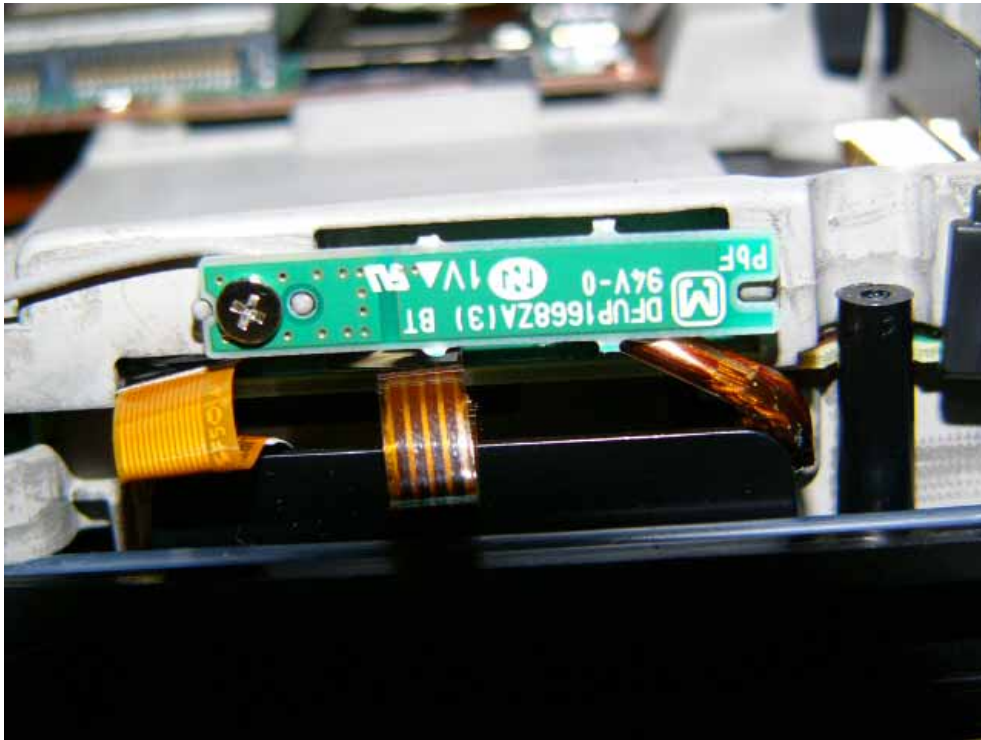
WLAN Main TX/RX Antenna (Reverse side)



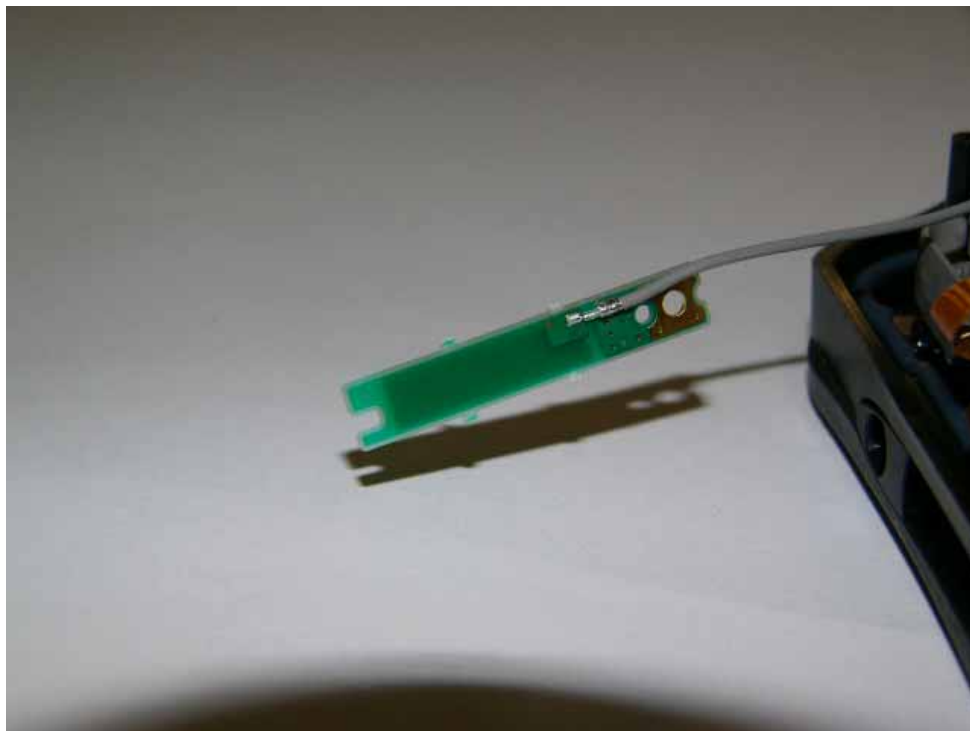
WLAN AUX RX Antenna



WLAN Aux RX Antenna (Reverse side)



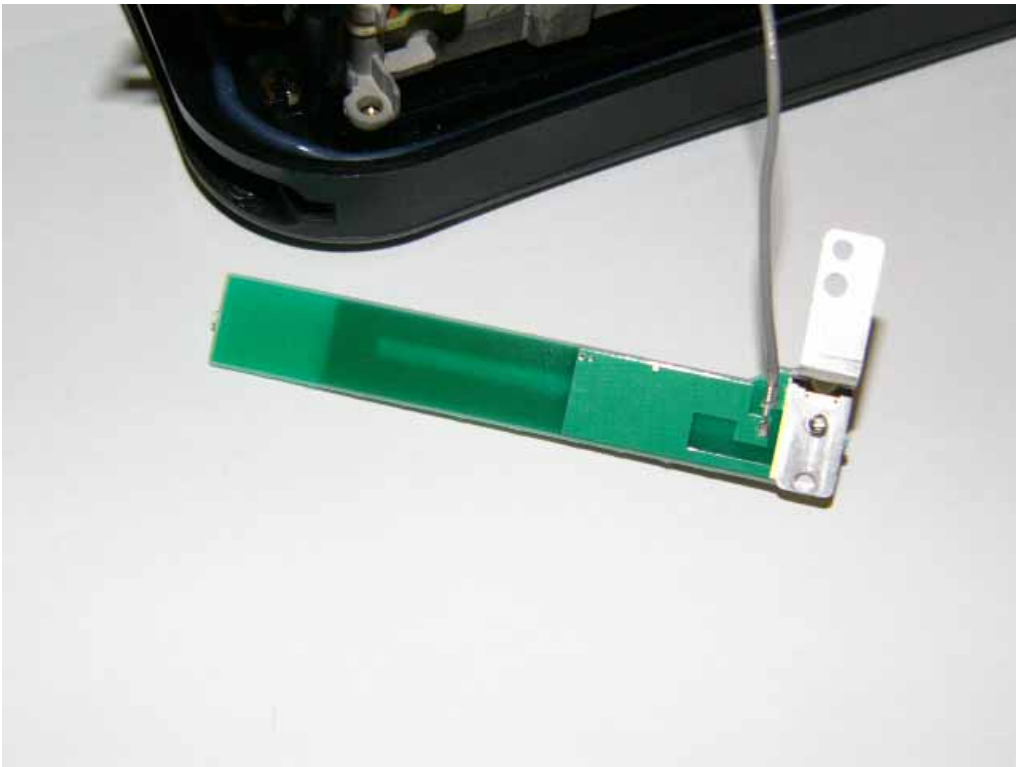
Bluetooth TX/RX Antenna



Bluetooth TX/RX Antenna (Reverse side)



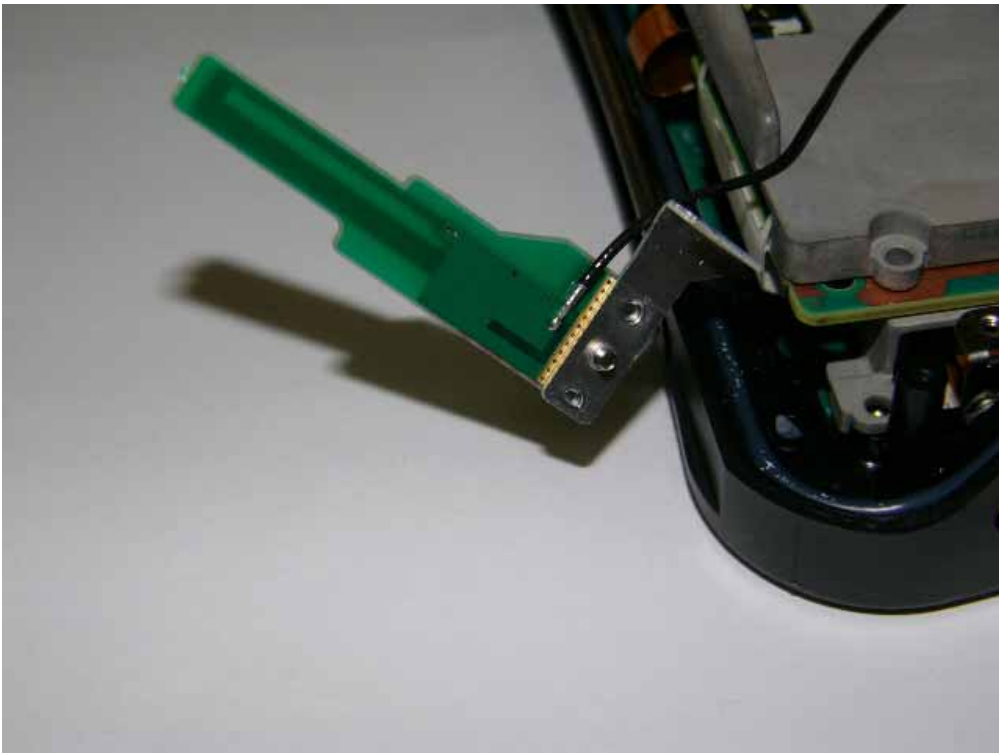
WWAN Main TX/RX Antenna



WWAN Main TX/RX Antenna (Reverse side)



WWAN AUX RX Antenna



WWAN AUX RX Antenna (Reverse side)



GPS RX Antenna



GPS RX Antenna (Reverse side)

5. Antenna Specification

WLAN Main TX/RX Antenna: Pattern Antenna

(Inverted F type: 0.82dBi max):2.4GHz

WLAN Main TX/RX Antenna: Pattern Antenna

(Inverted F type: 2.99dBi max): 5Ghz

WLAN Aux RX only Antenna: Pattern Antenna

Bluetooth TX/RX Antenna: Pattern Antenna

(Inverted F type: -1.35dBi max)

WWAN Main TX/RX Antenna: Pattern Antenna

(Inverted F type: -0.98dBi max): 850MHz

WWAN Main TX/RX Antenna: Pattern Antenna

(Inverted F type: -0.6dBi max): 1900MHz

WWAN Aux RX only Antenna: Pattern Antenna

GPS RX only Antenna: Pattern Antenna