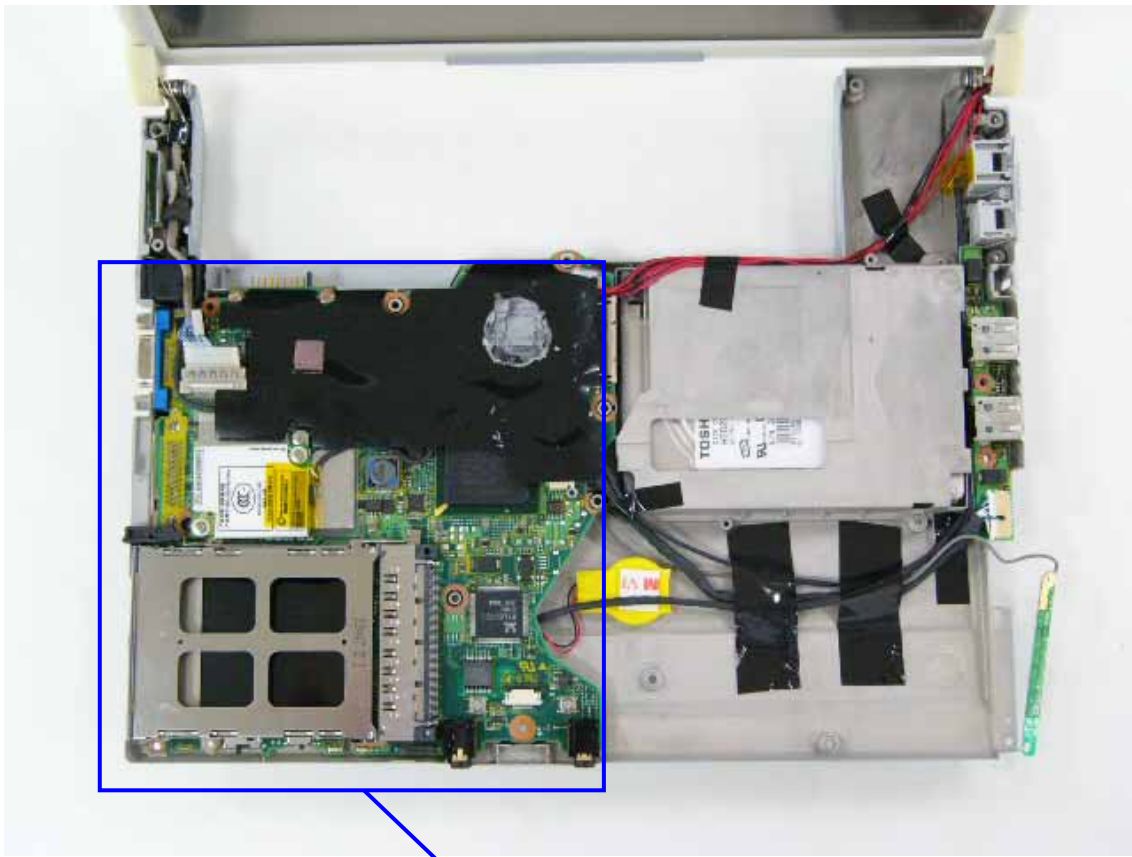


2) WLAN Card position



Reverse Side



WLAN Card Position

3) WLAN exterior photo



WLAN Top View



WLAN Bottom View

4) WLAN interior photo



WLAN inside Top View



WLAN inside Bottom View

5) WLAN Antenna position

Aux TX/RX  
Antenna



Main TX/RX  
Antenna



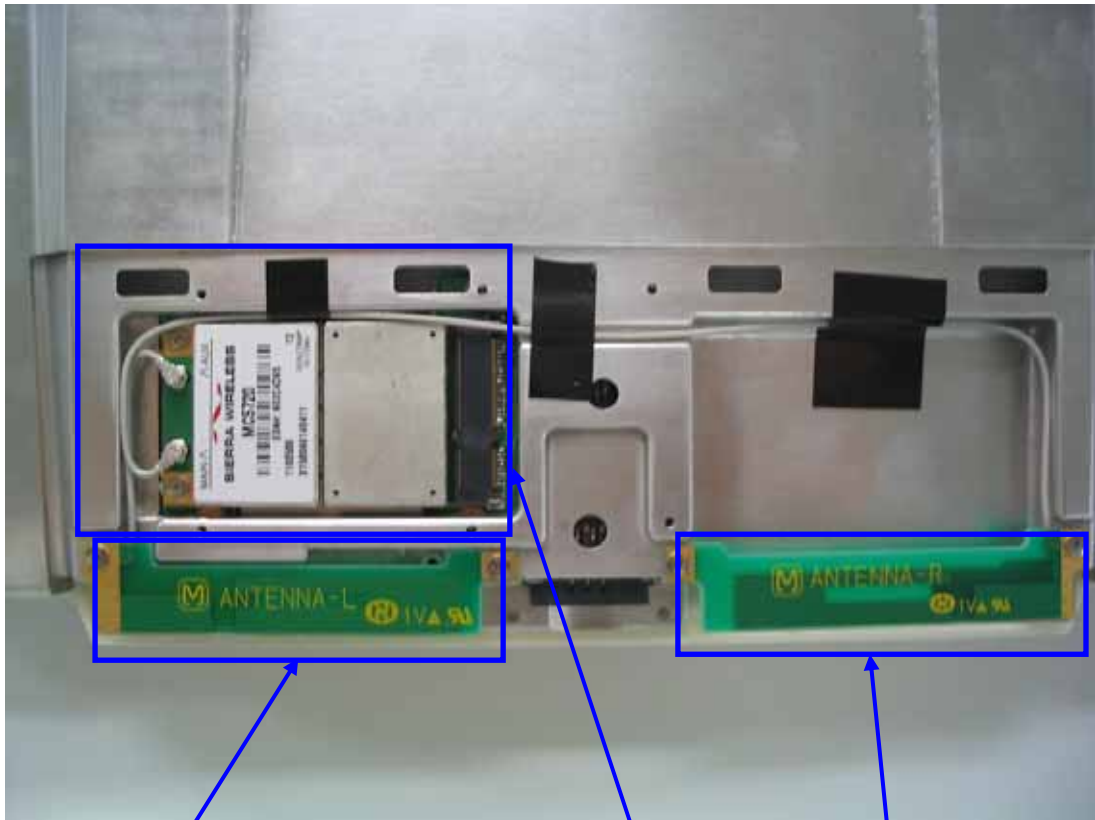


Aux TX/RX Antenna Magnified View(Reverse side)

6) Top View without EVDO antenna cover



7) EVDO Module and antenna position



Magnified View

Aux TX/RX  
Antenna

EVDO Module  
(Sierra MC5720)

Main TX/RX  
Antenna



EVDO Main Antenna Magnified Viwe



EVDO AUX Antenna Magnified View

8) EVDO Exterior photo



EVDO Top View



EVDO Bottom View

9) EVDO Exterior photo



EVDO Inside Top View



EVDO Inside Bottom View

## 10) Antenna Specification

WLAN Main TX/RX Antenna:	Inverted F type: 3.69 dBi max
WLAN Aux TX/RX Antenna:	Inverted F type: 1.09 dBi max
EVDO Main TX/RX Antenna:	Inverted F type: 3.38 dBi max
EVDO Aux TX/RX Antenna:	Inverted F type: 2.47 dBi max