

2) WLAN Card position

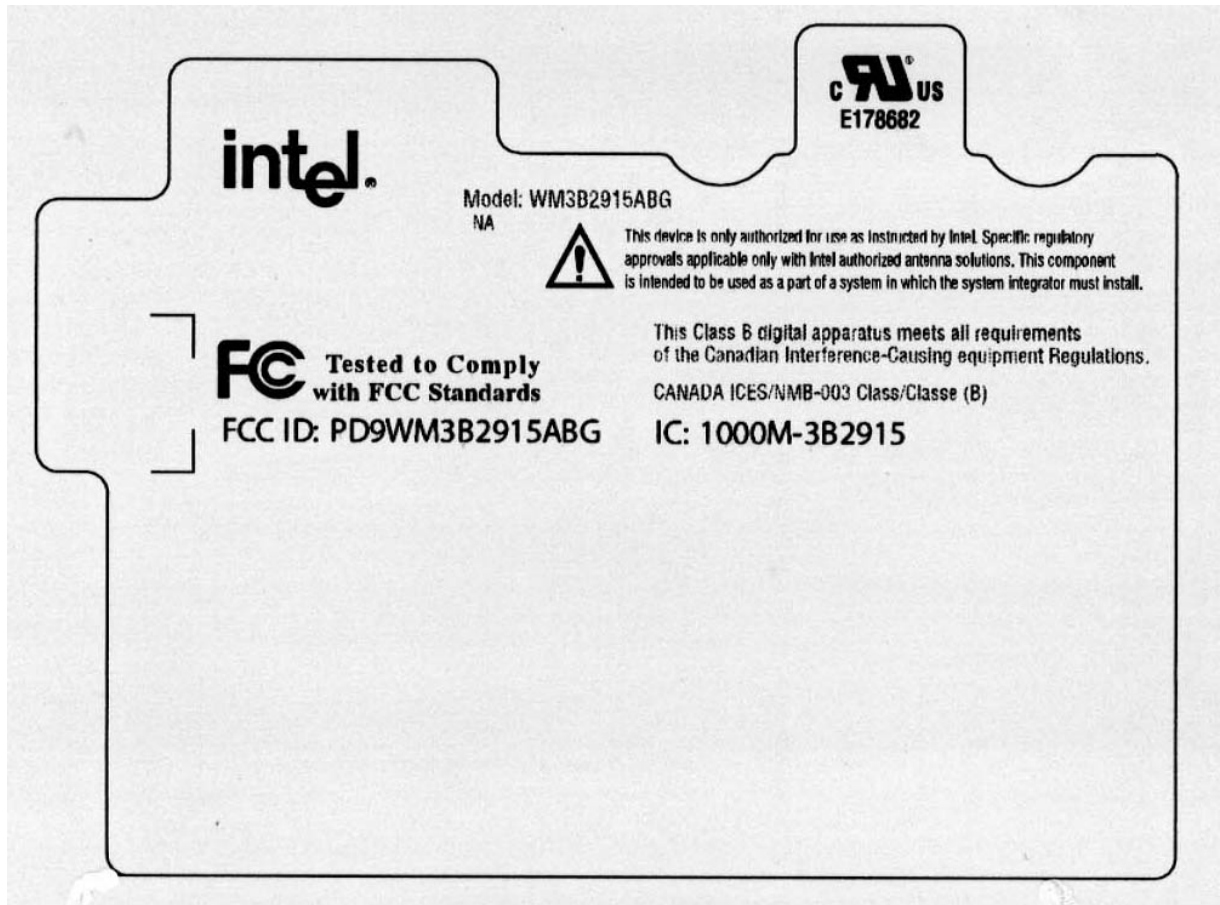


3) WLAN exterior photo



WLAN Top View

*The Rating Plate of above photo is not final. See hereinafter Rating Plate design.





WLAN Bottom View

4) WLAN interior photo



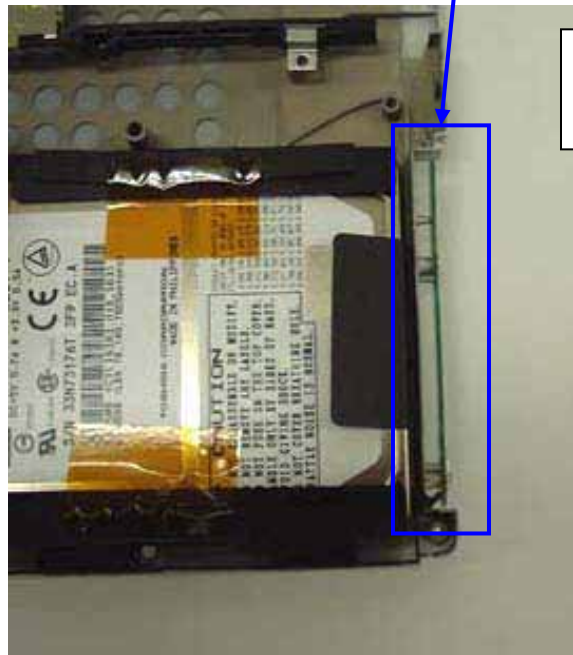
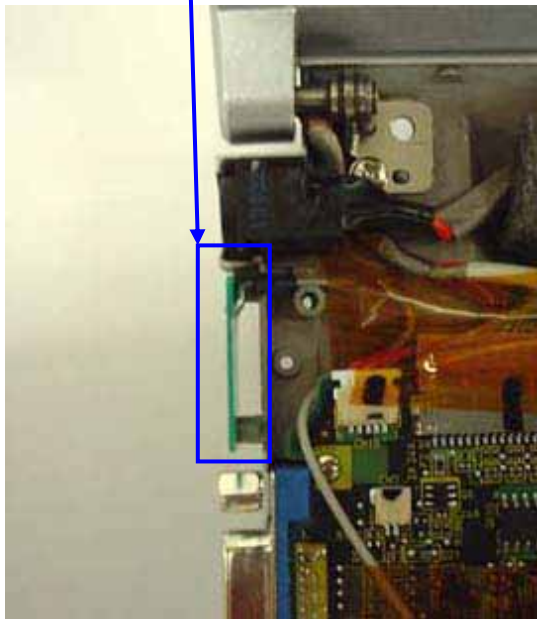
WLAN inside Top View



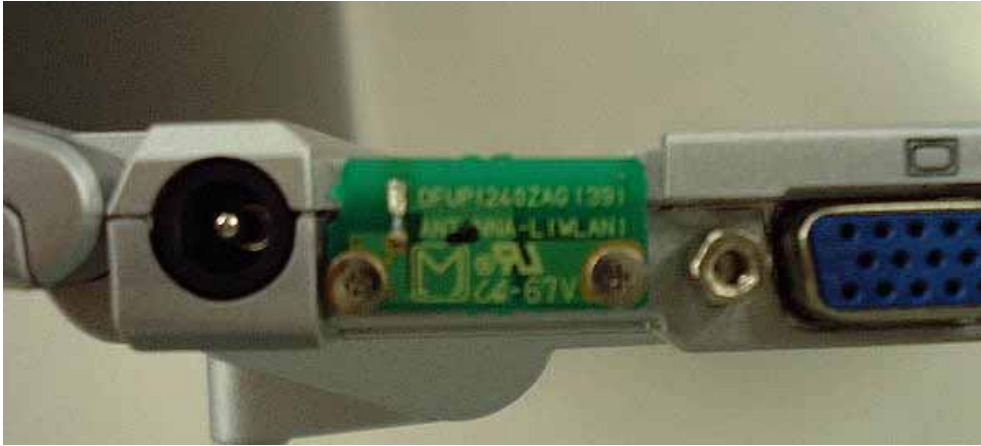
WLAN inside Bottom View

5) Antenna position

Aux TX/RX
Antenna



Main TX/RX
Antenna



Aux TX/RX Antenna Magnified View



Main TX/RX Antenna magnified View

6) Antenna Specification

Main TX/RX Antenna: Inverted F type: 1.32dBi max

Aux TX/RX Antenna: Inverted F type: 1.10dBi max

*Note: WLAN antenna is diversity antenna.