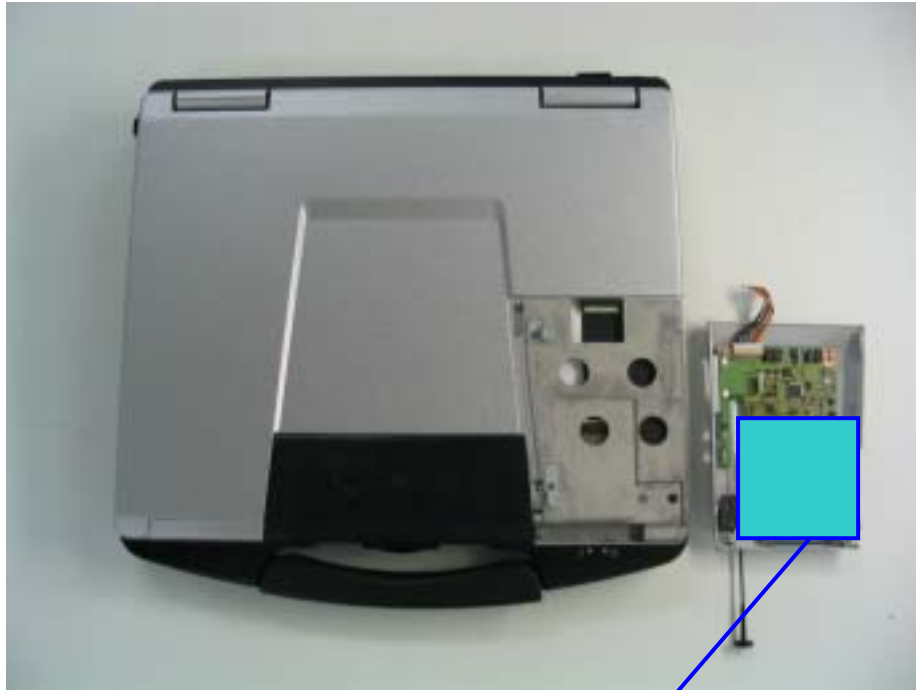
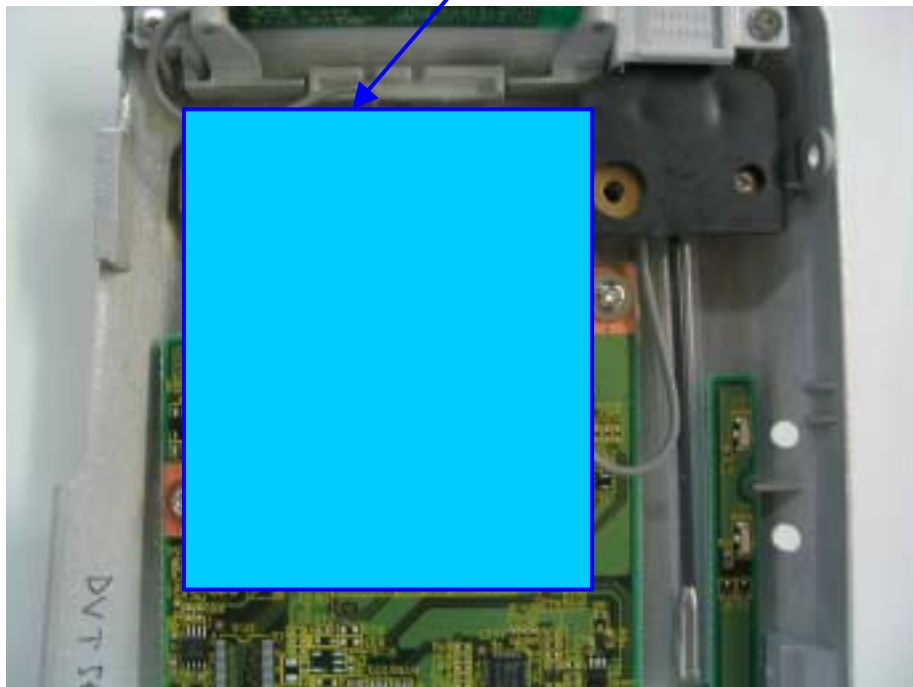


2) EVDO module position



180 Deg
Rotate



3) EVDO rev.A Module photo



MC5725 Module Top View



MC5725 Module Bottom View



MC5725 Module Interior Top View



MC5725 Module Interior Bottom View

4) WLAN Card position



Magnified View



5) WLAN exterior photo

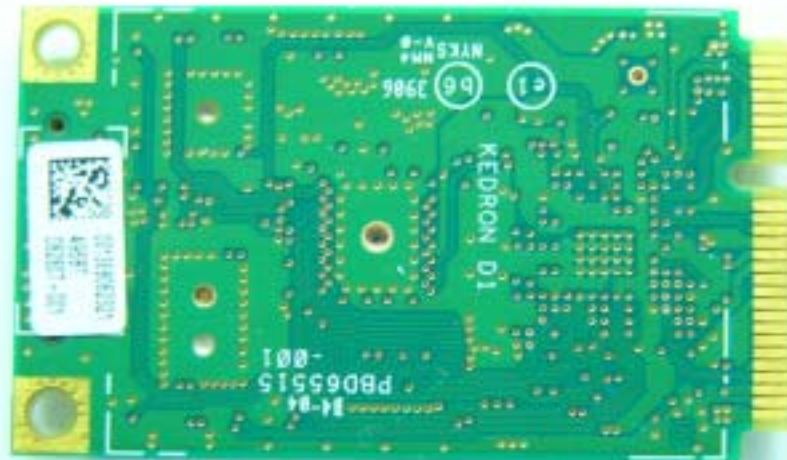
WLAN Top View



WLAN Bottom View

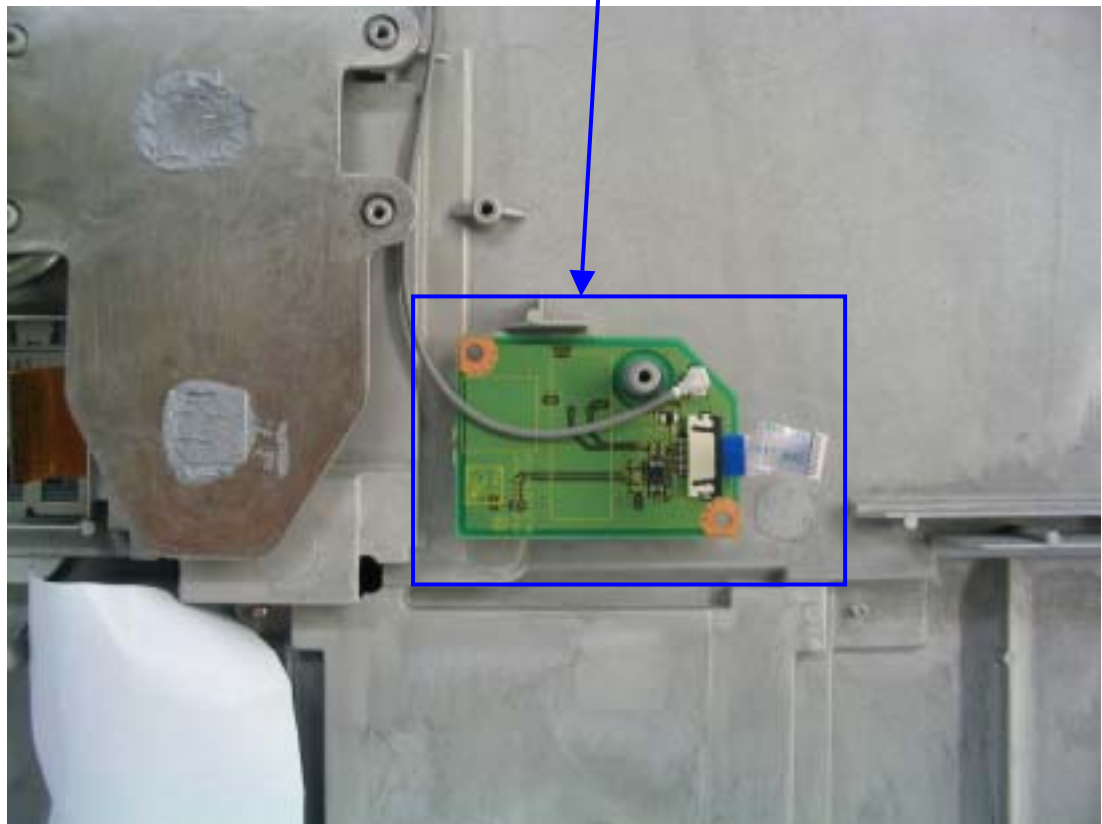
6) WLAN interior photo

WLAN inside Top View



WLAN inside Bottom View

7) BlueTooth Card Position

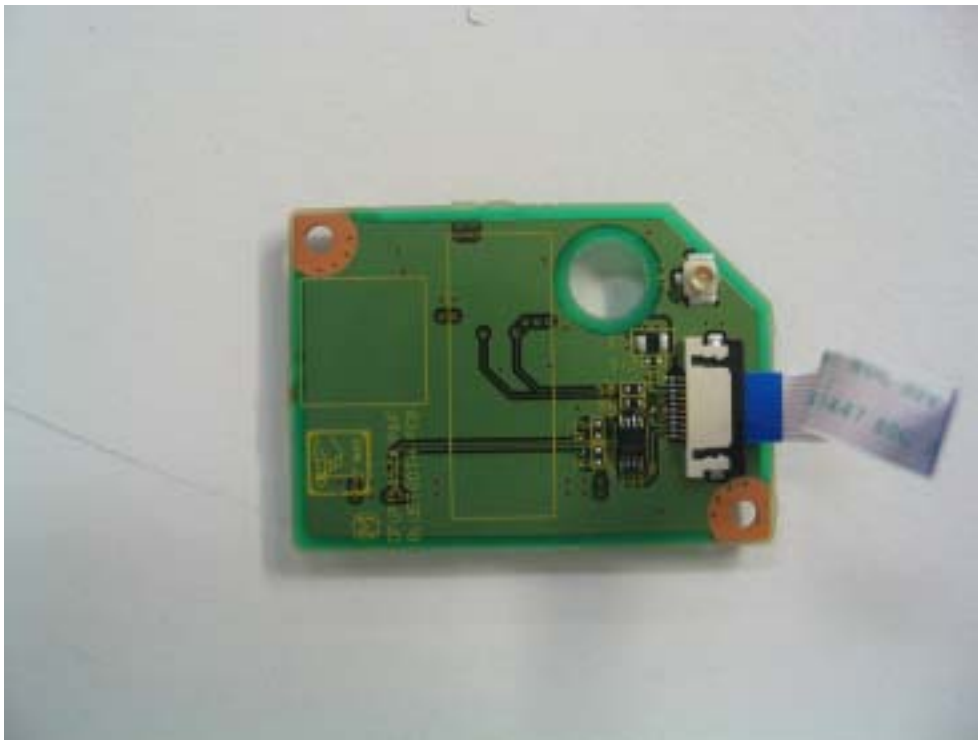


Bluetooth Card Magnified View (Main PWB removed)

8) BlueTooth Card exterior photo



BlueTooth Card Top View



BlueTooth Card Bottom View

9) BlueTooth Module interior photo



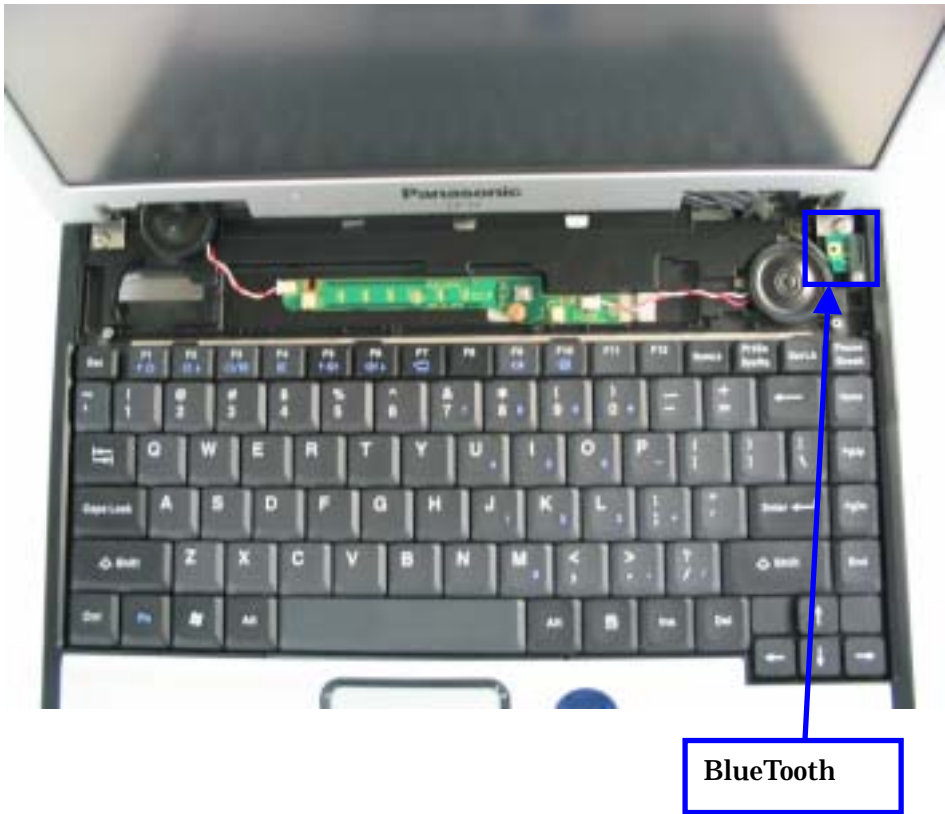
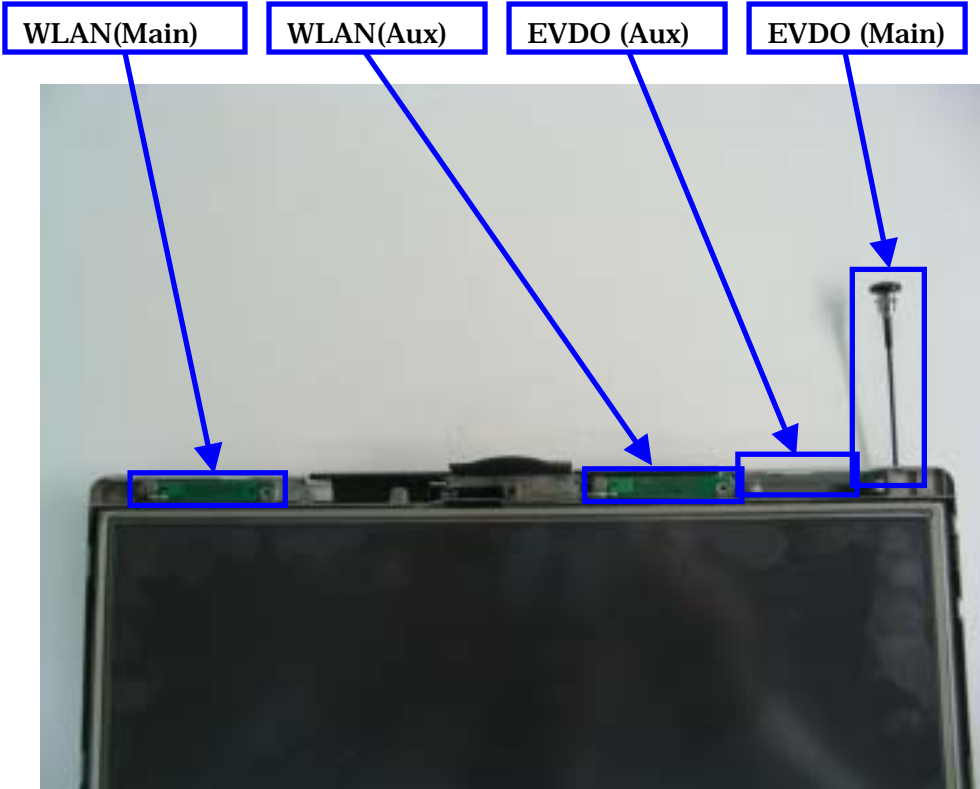
BlueTooth Module inside Top View



BlueTooth Module inside Bottom View

10) Antenna position (EVDO, WLAN & BlueTooth)

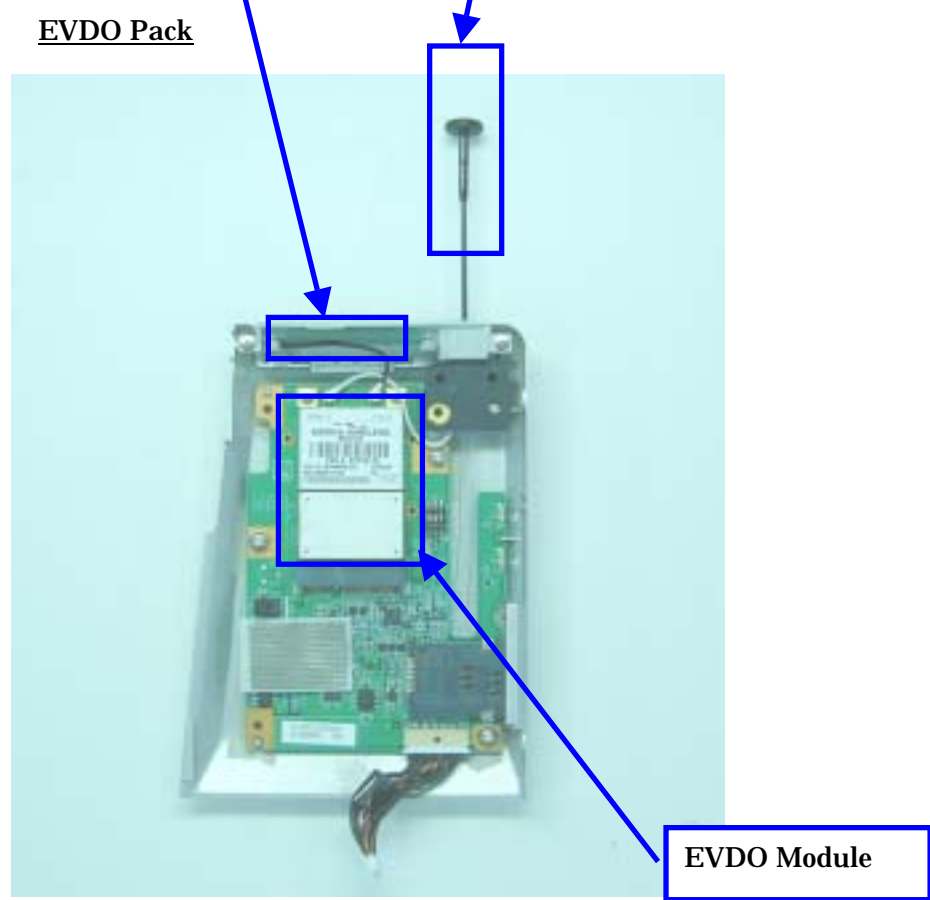




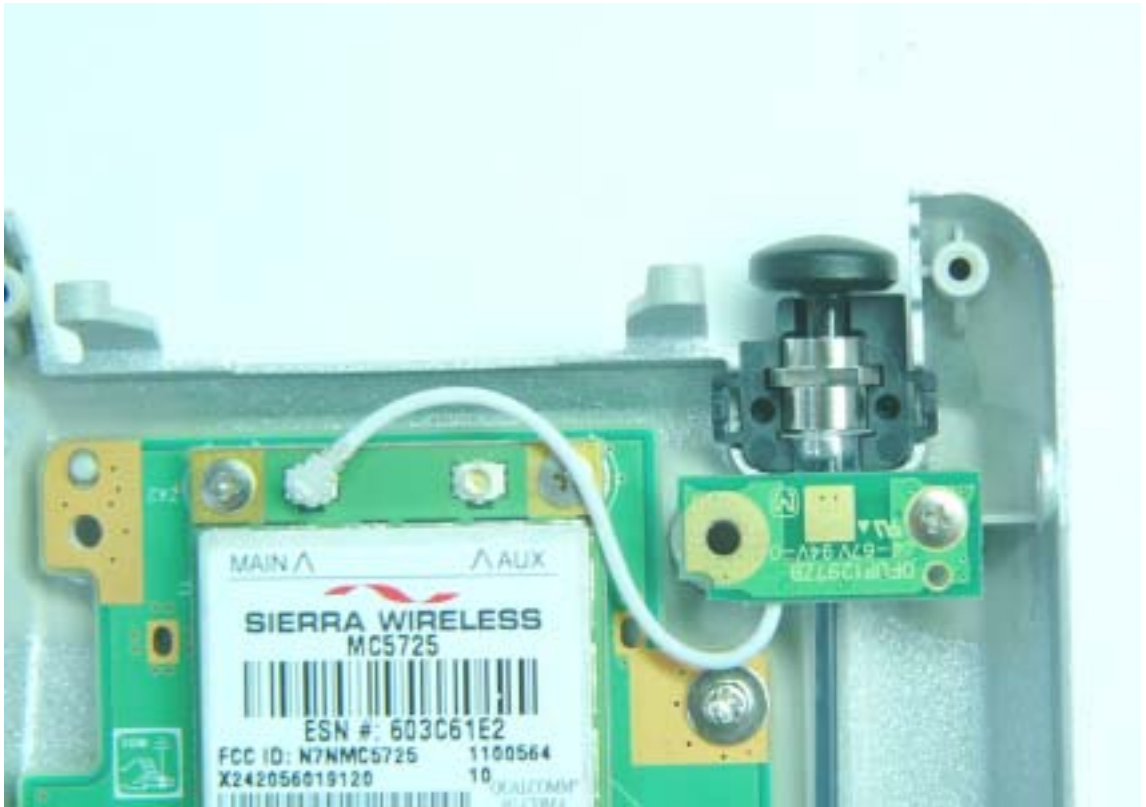
11) EVDO antenna photo



EVDO (Aux) EVDO (Main) EVDO Pack



EVDO Main antenna magnified view

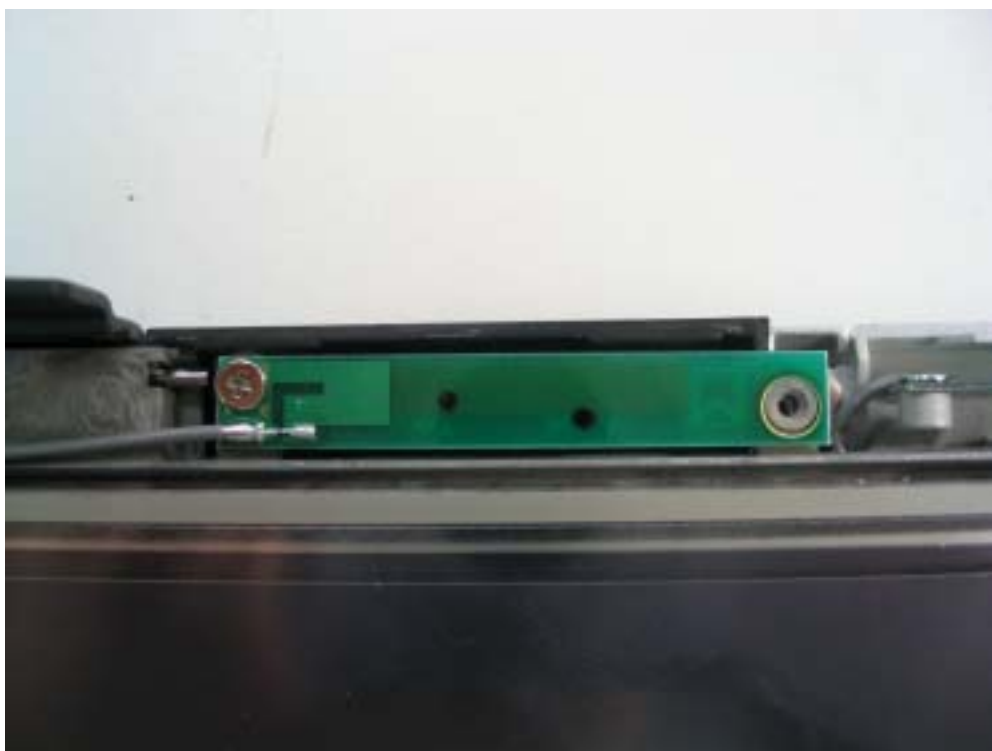


EVDO Aux antenna magnified view

12) WLAN antenna Photo



WLAN Main antenna magnified view



WLAN Aux antenna magnified view

13) BlueTooth antenna Photo



BlueTooth Antenna Magnified View

14) Antenna Specification

EVDO Main Antenna:	Monopole whip type: 2.96dBi max
EVDO Aux Antenna	Inverted F type: 0.29dBi max
WLAN Main Antenna:	Inverted F type: 1.63dBi max
WLAN Aux Antenna:	Inverted F type: 3.08dBi max
BlueTooth Antenna:	Inverted F type: 1.82dBi max