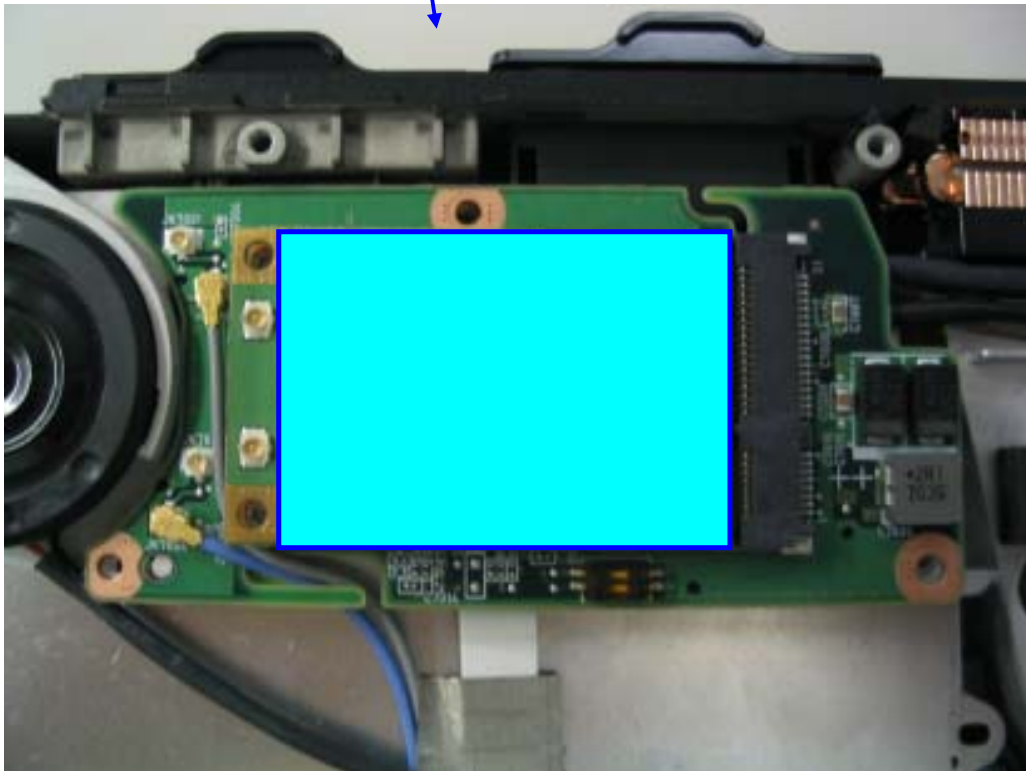


2) WWAN Module position



3) WWAN (MC5727) Photo



WWAN Module Top View



WWAN module Bottom View



WWAN Module Interior Top View



WWAN Module Interior Bottom View

4) WLAN Card position



90 Deg
Rotate

WLAN module position



WLAN Module Magnified View

5) WLAN (512AN MMW) exterior photo



WLAN Top View

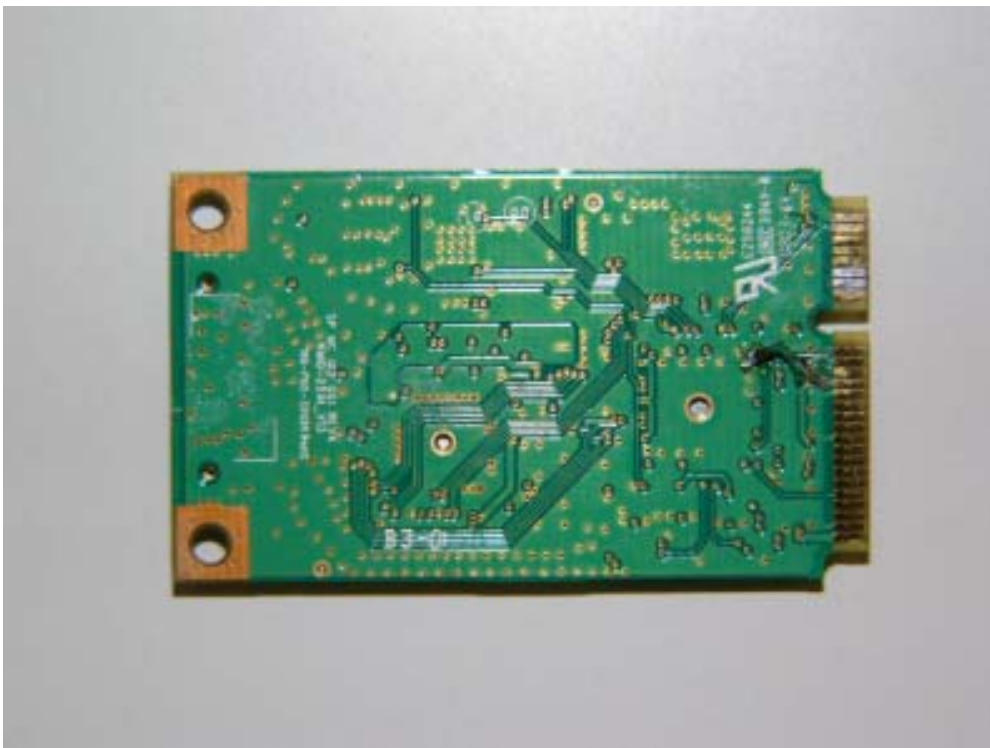


WLAN Bottom View

6) WLAN (512AN MMW) interior photo

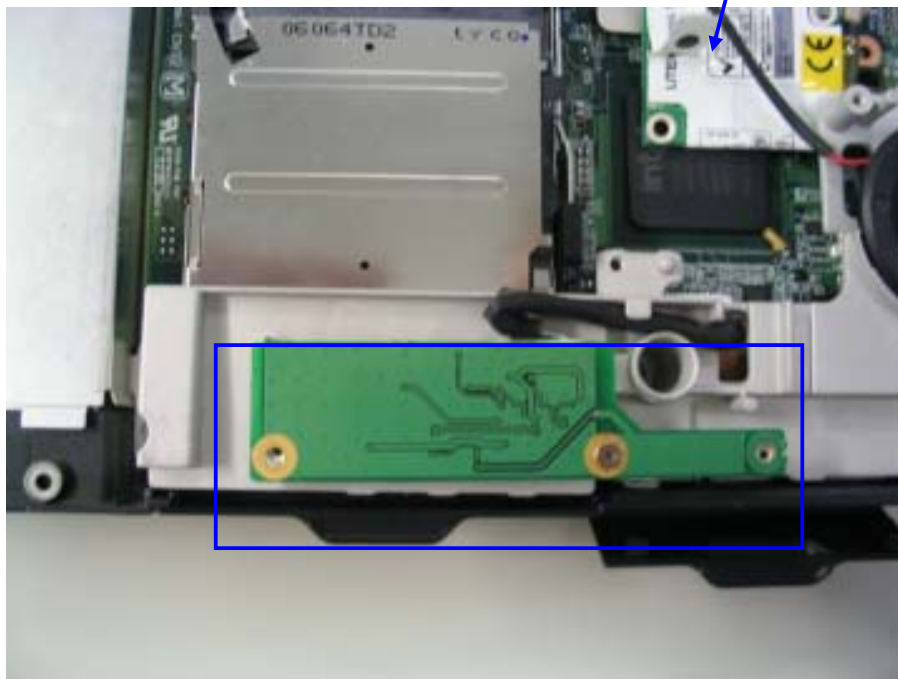
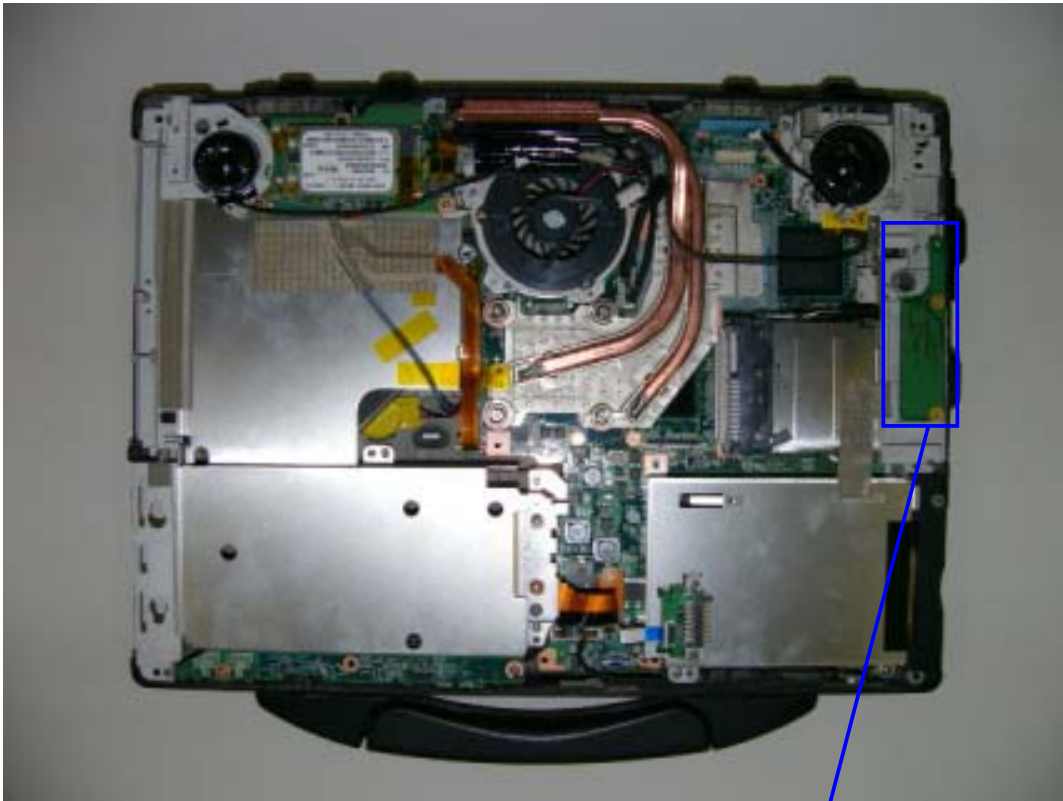


WLAN inside Top View



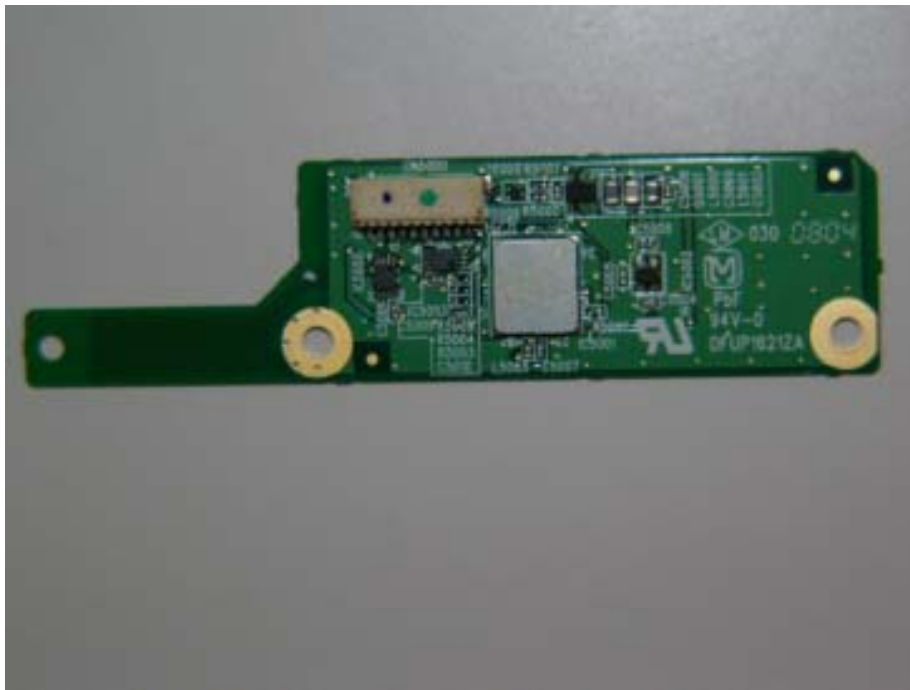
WLAN inside Bottom View

7) Bluetooth Card Position

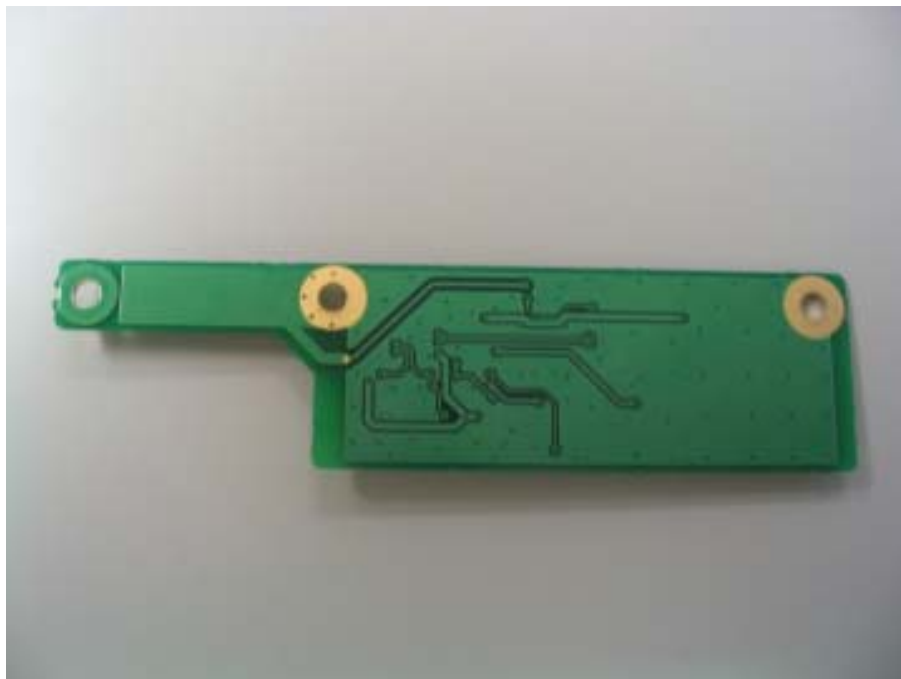


Bluetooth Card Magnified View (PWB removed)

8) Bluetooth Card exterior photo



Bluetooth Card Top View

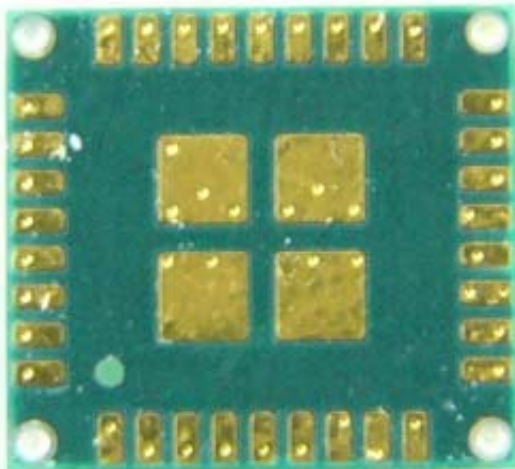


Bluetooth Card Bottom View

9) Bluetooth (UGNZA) Module interior photo



Bluetooth Module inside Top View

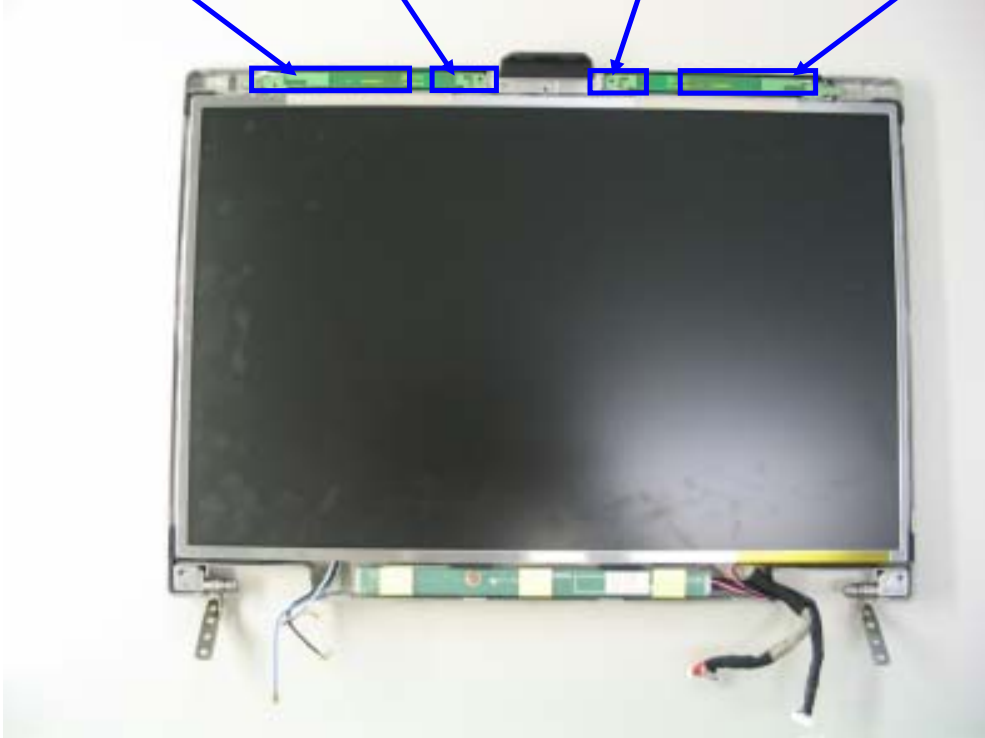


Bluetooth Module inside Bottom View

10) Antenna position (WWAN, WLAN & Bluetooth)



WWAN Main TX/RX antenna WLAN Main TX/RX antenna WLAN Aux RX only antenna WWAN Aux RX only antenna

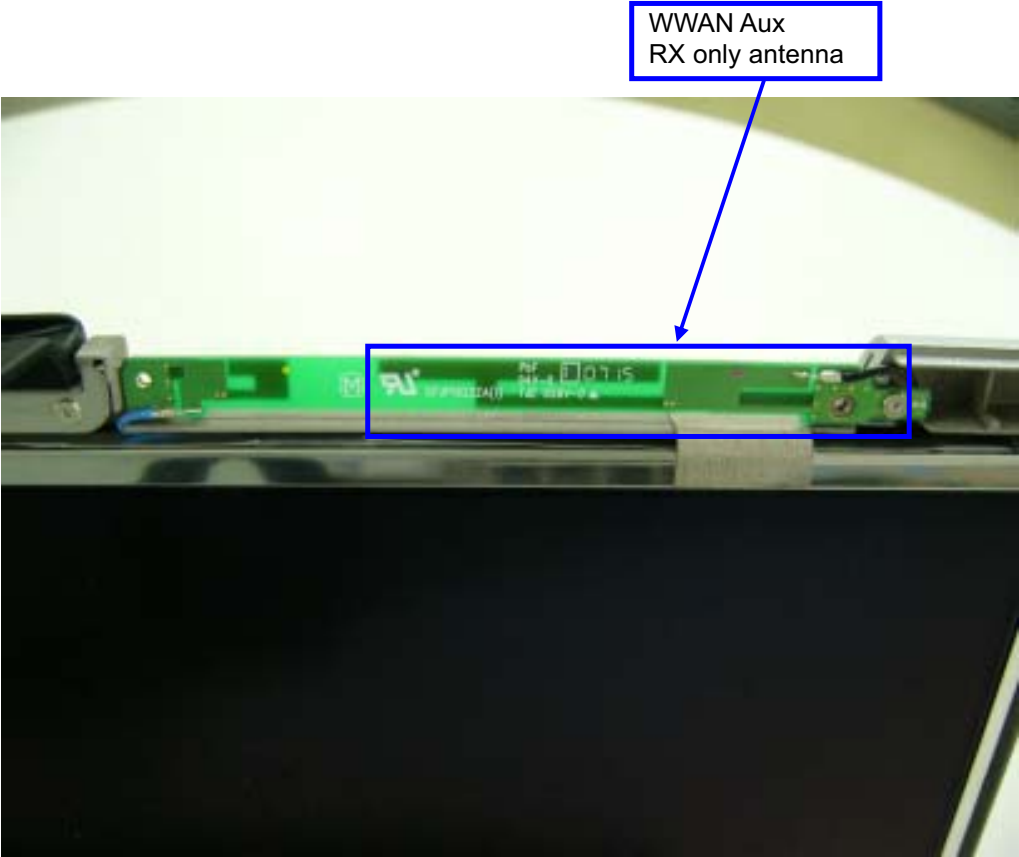


Bluetooth TX/RX antenna

11) WWAN antenna photo

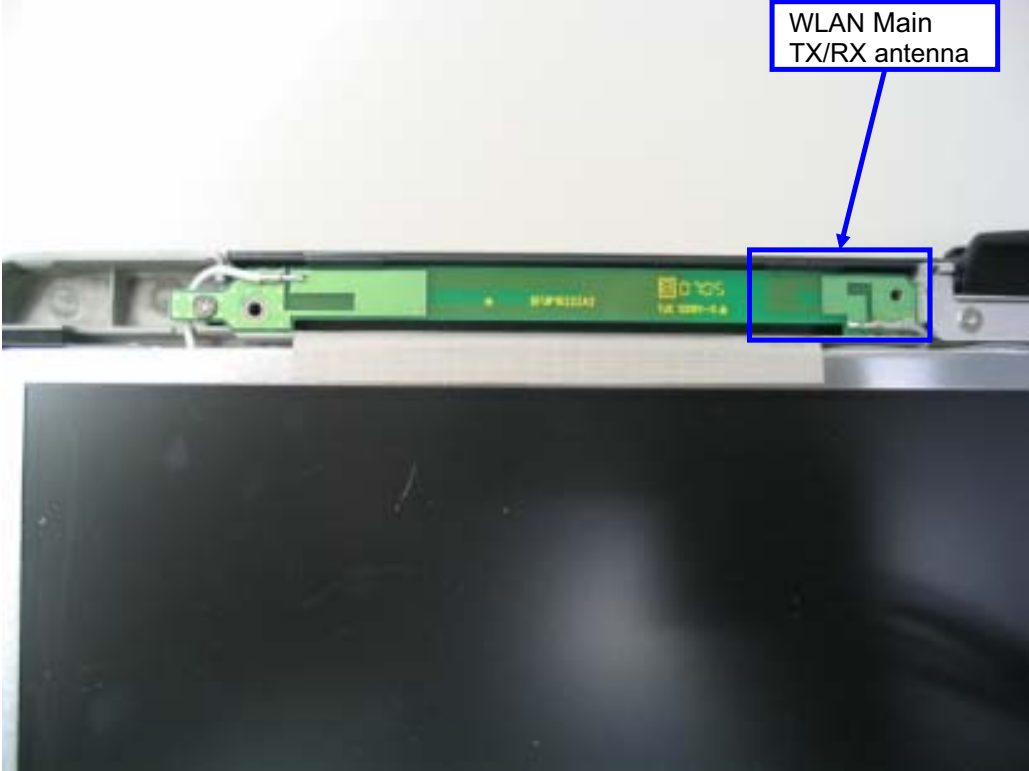


WWAN Main TX/RX Antenna



WWAN AUX RX only Antenna

12) WLAN antenna Photo

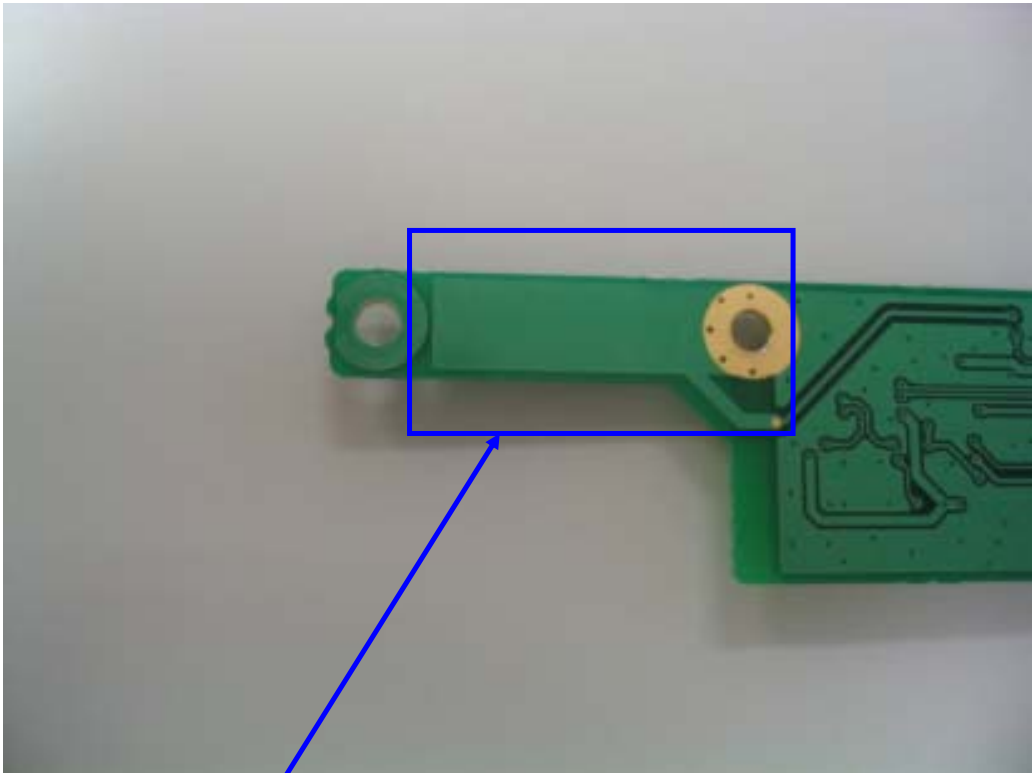


WLAN Main antenna magnified view



WLAN Aux antenna magnified view

13) Bluetooth antenna Photo



Bluetooth TX/RX antenna

Bluetooth Antenna Magnified View

14) Antenna Specification

WLAN Main Antenna:	Inverted F type: 1.85dBi max (2.4GHz)
WLAN Main Antenna:	Inverted F type: 1.47dBi max (5.15-5.35GHz)
WLAN Main Antenna:	Inverted F type: 1.76dBi max (5.5-5.825GHz)
WLAN Aux Antenna:	Inverted F type (RX only Antenna)
Bluetooth Antenna:	Inverted F type: 3.69dBi max
WWAN Main Antenna:	Inverted F type: -0.84dBi max (850MHz)
WWAN Main Antenna:	Inverted F type: 2.19dBi max (1900MHz)
WWAN Aux Antenna:	Inverted F type (RX only Antenna)