

3) WWAN (UNDP-1) Photo



WWAN Module Top View



WWAN module Bottom View



WWAN Module Interior Top View



WWAN Module Interior Bottom View

4) WiMAX/WLAN Card position



90 Deg
Rotate

WiMAX/WLAN module position



WiMAX/WLAN Module Magnified View

5) WiMAX/WLAN (512ANX_MMW) exterior photo



WiMAX/WLAN Top View



WiMAX/WLAN Bottom View

6) WiMAX/WLAN (512ANX_MMW) interior photo

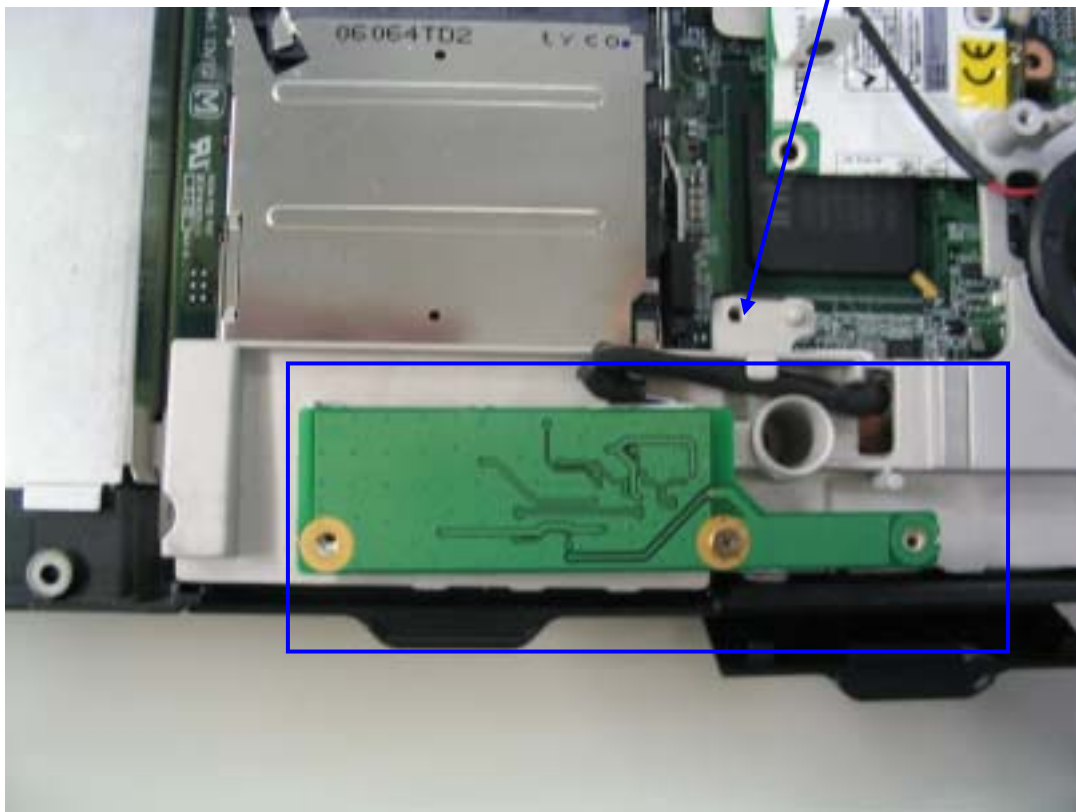


WiMAX/WLAN inside Top View



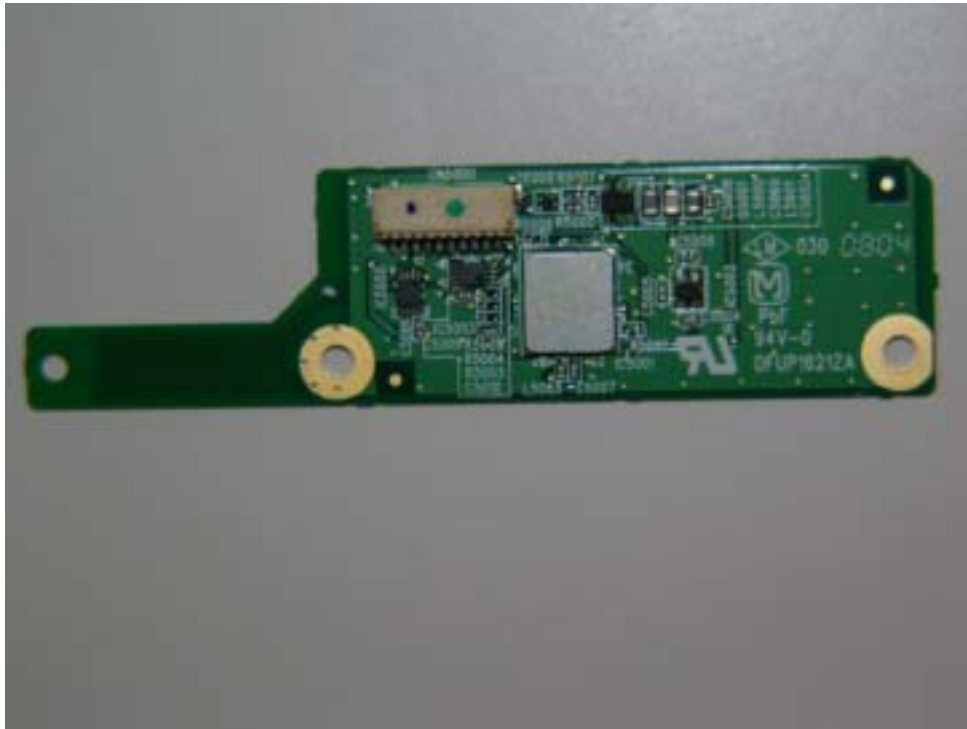
WiMAX/WLAN inside Bottom View

7) Bluetooth Card Position

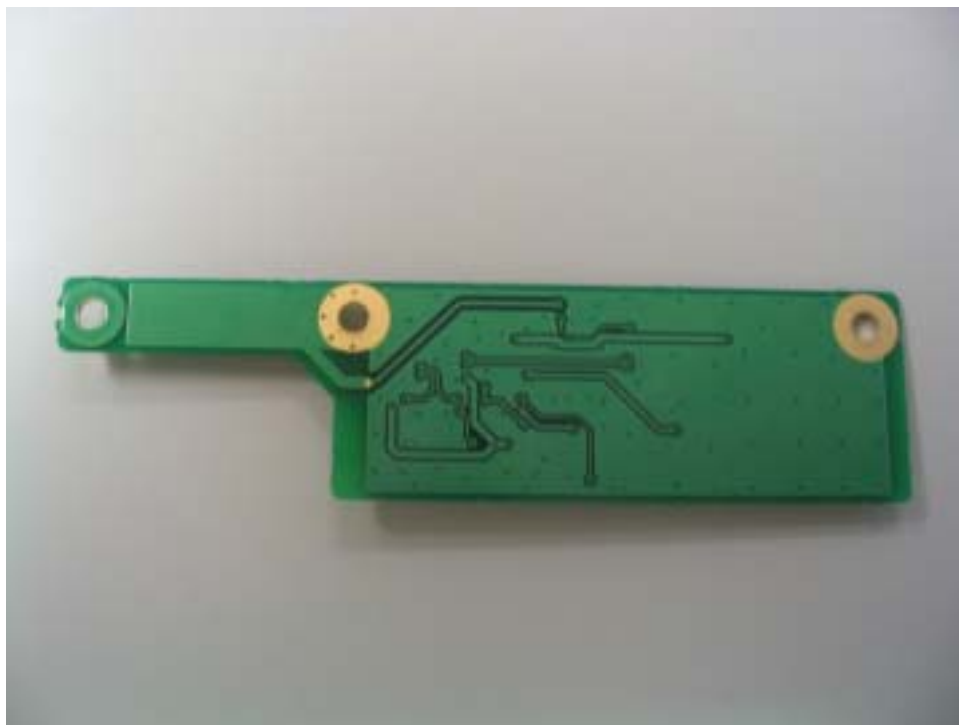


Bluetooth Card Magnified View (PWB removed)

8) Bluetooth Card exterior photo



Bluetooth Card Top View

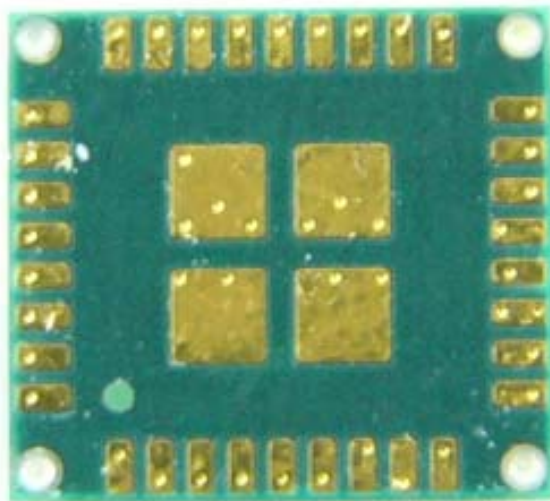


Bluetooth Card Bottom View

9) Bluetooth (UGNZA) Module interior photo



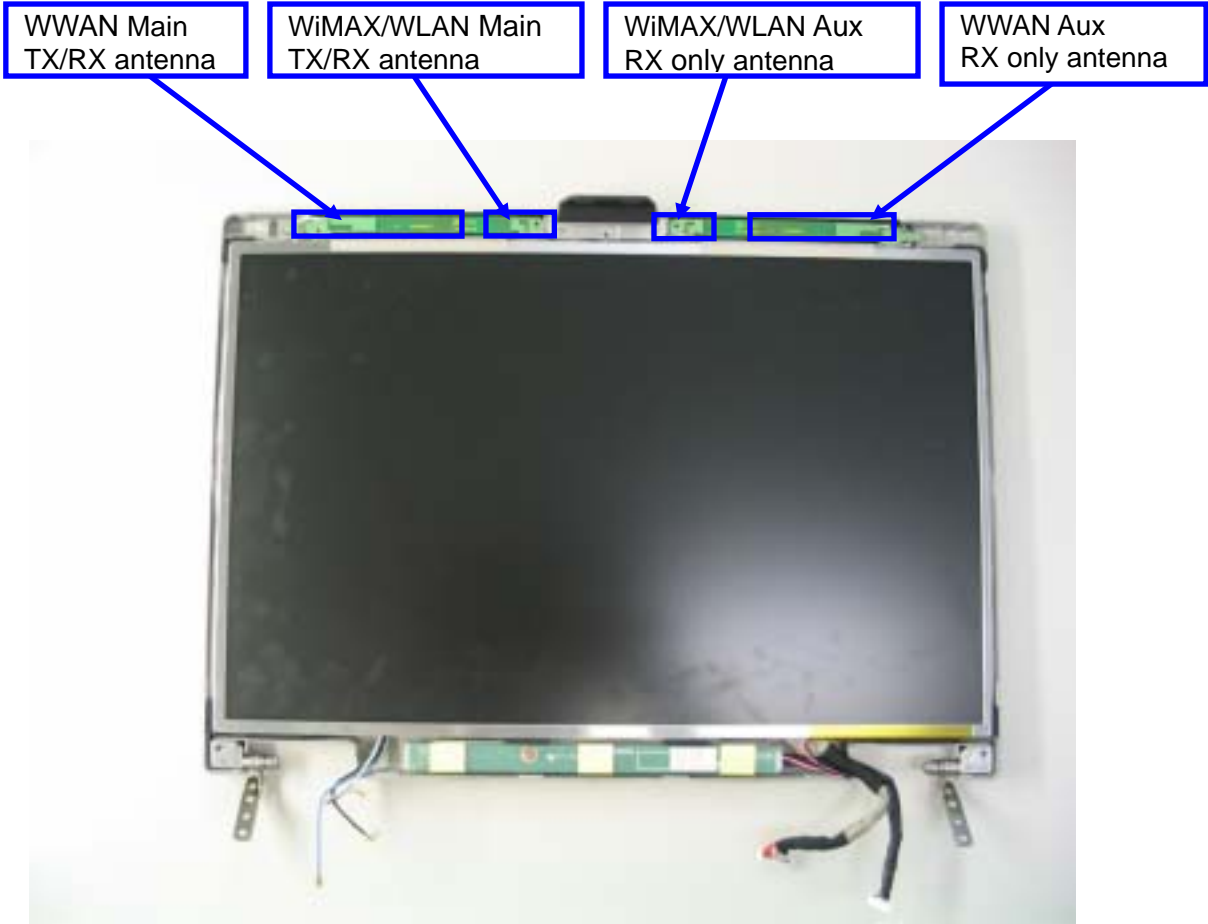
Bluetooth Module inside Top View



Bluetooth Module inside Bottom View

10) Antenna position (WWAN, WiMAX/WLAN & Bluetooth)



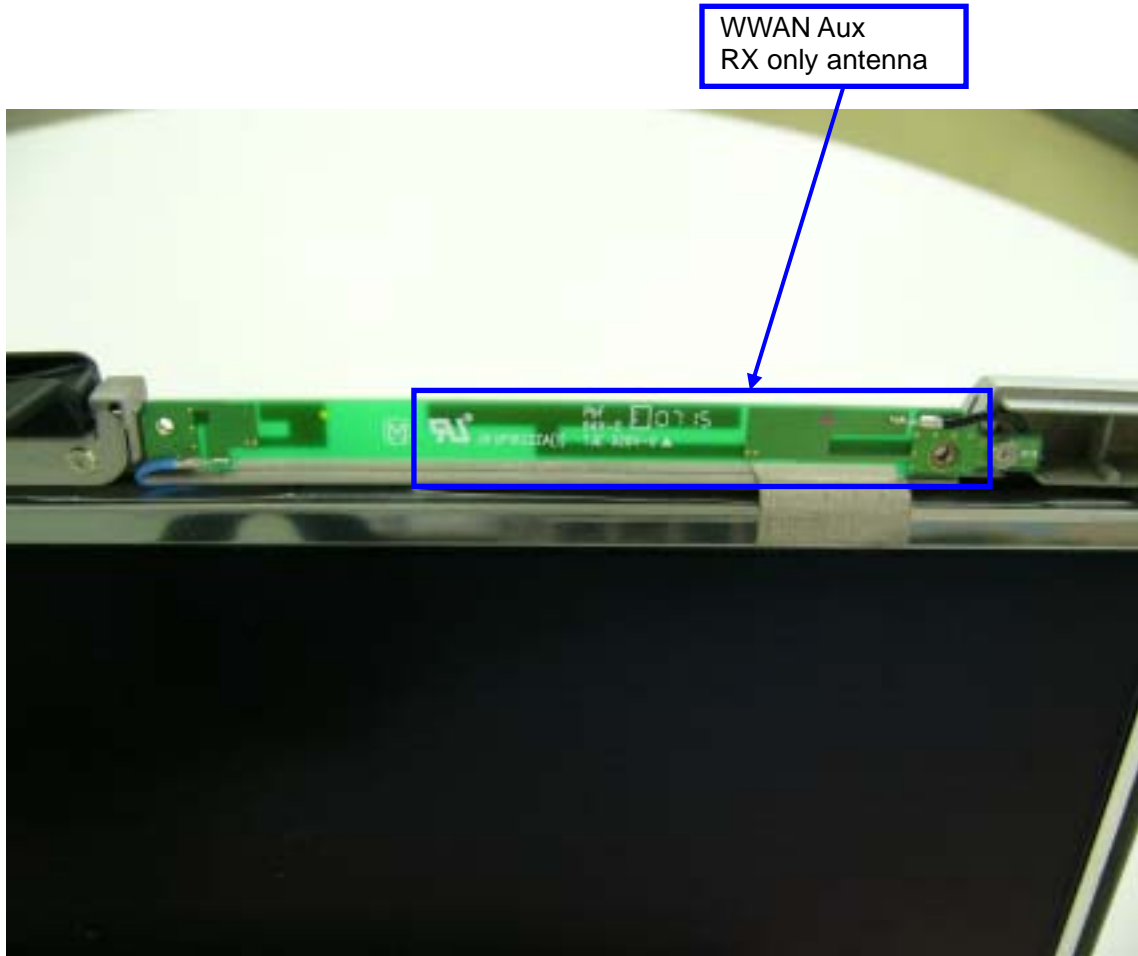


11) WWAN antenna photo



WWAN Main
TX/RX antenna

WWAN Main TX/RX Antenna



WWAN Aux
RX only antenna

WWAN AUX RX only Antenna

12) WiMAX/WLAN antenna Photo

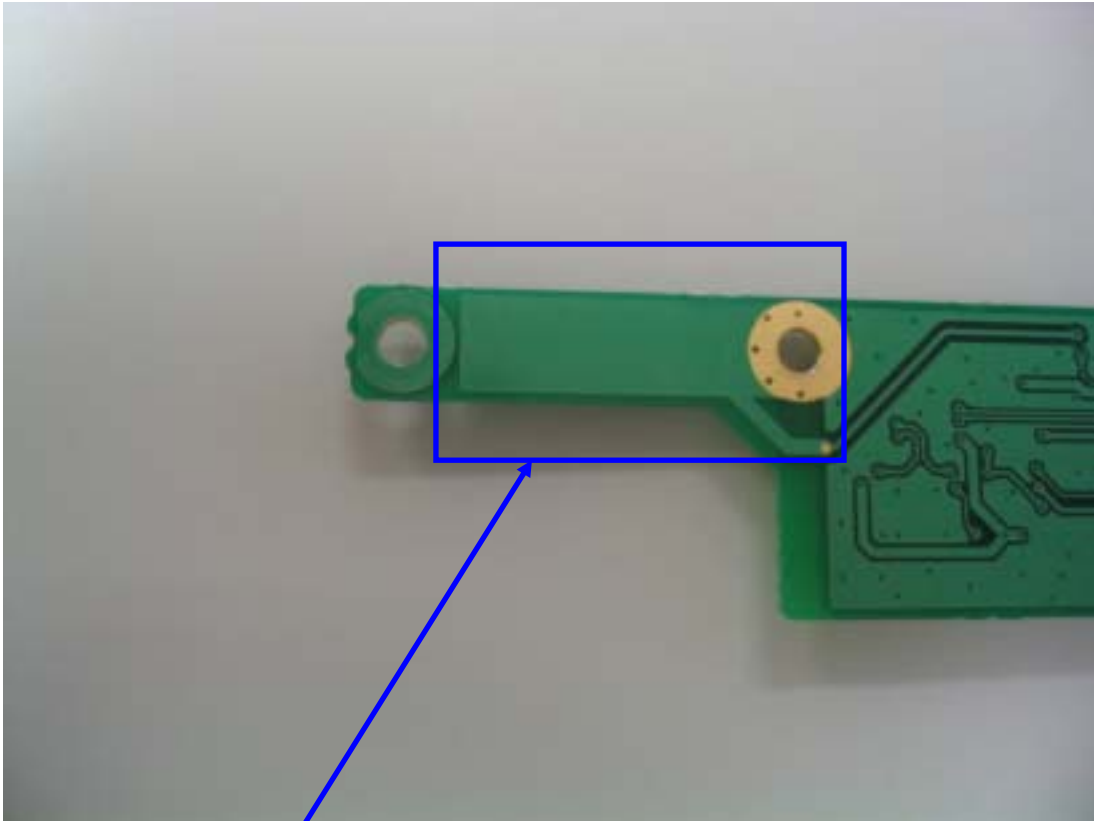


WiMAX/WLAN Main antenna magnified view



WiMAX/WLAN Aux antenna magnified view

13) Bluetooth antenna Photo



Bluetooth TX/RX antenna

Bluetooth Antenna Magnified View

14) Antenna Specification

WiMAX Main Antenna	Inverted F type: 2.16dBi max (2.5-2.6GHz) 2.99dBi max(2.6-2.7GHz)
WiMAX Aux Antenna	Inverted F type (RX only Antenna)
WLAN Main Antenna:	Inverted F type: 1.85dBi max (2.4GHz)
WLAN Main Antenna:	Inverted F type: 1.47dBi max (5.15-5.35GHz)
WLAN Main Antenna:	Inverted F type: 1.76dBi max (5.50-5.825GHz)
WLAN Aux Antenna:	Inverted F type (RX only Antenna)
Bluetooth Antenna:	Inverted F type: 3.69dBi max
WWAN Main Antenna:	Inverted F type: -0.84dBi max (850MHz)
WWAN Main Antenna:	Inverted F type: 2.19dBi max (1900MHz)
WWAN Aux Antenna:	Inverted F type (RX only Antenna)