

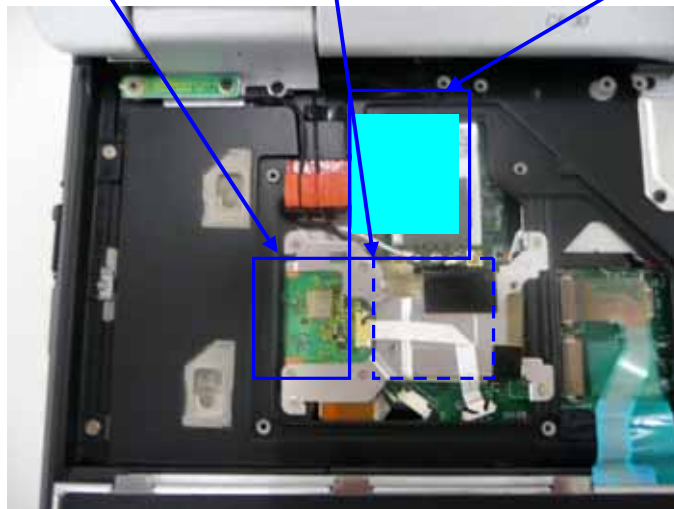
## 2. Module Position

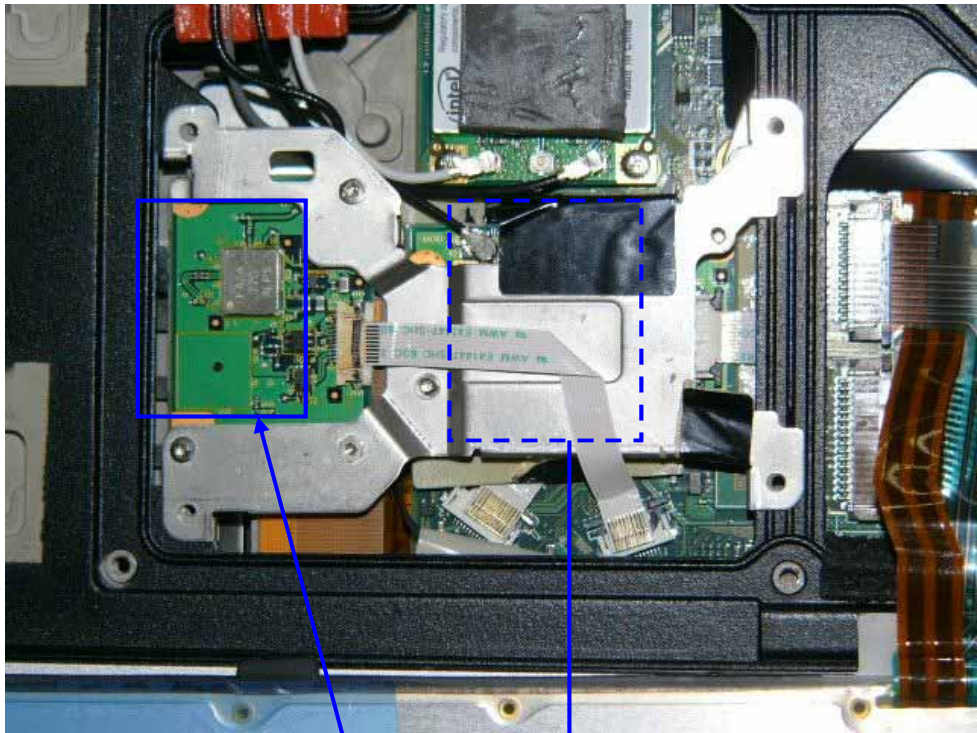


Bluetooth Module

GPS Module

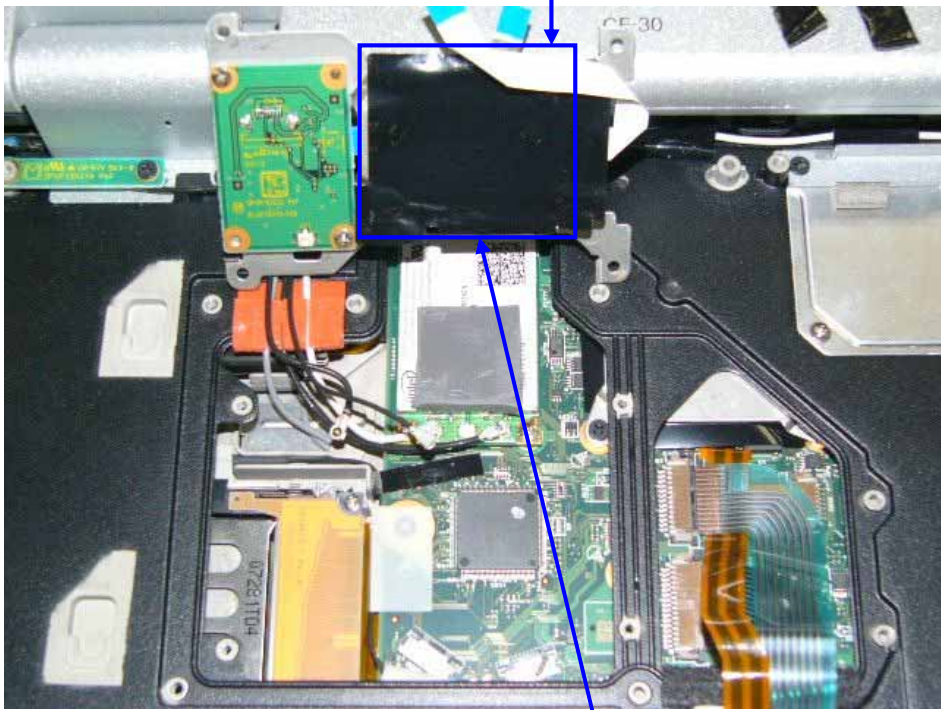
WLAN Module





Reverse Side

Bluetooth Module



GPS Module



UNDP-1 Module Pack Slide Position



UNDP-1 Module Pack

### 3. Module Photo

#### 1) WLAN (4965AG)

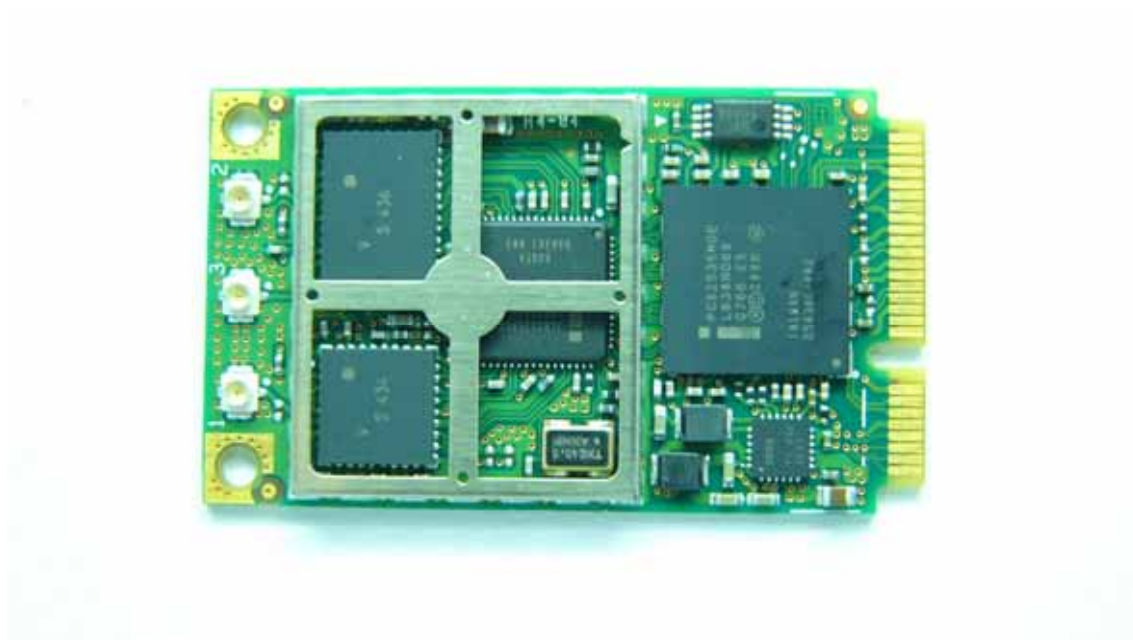


WLAN Top View



WLAN Bottom View

WLAN interior photo

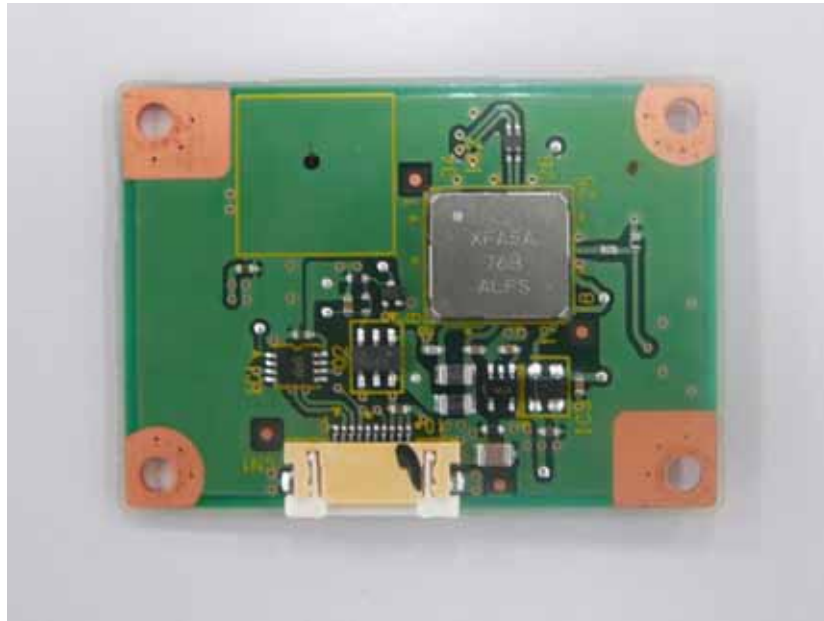


WLAN inside Top View



WLAN inside Bottom View

2) Bluetooth (UGNZA)



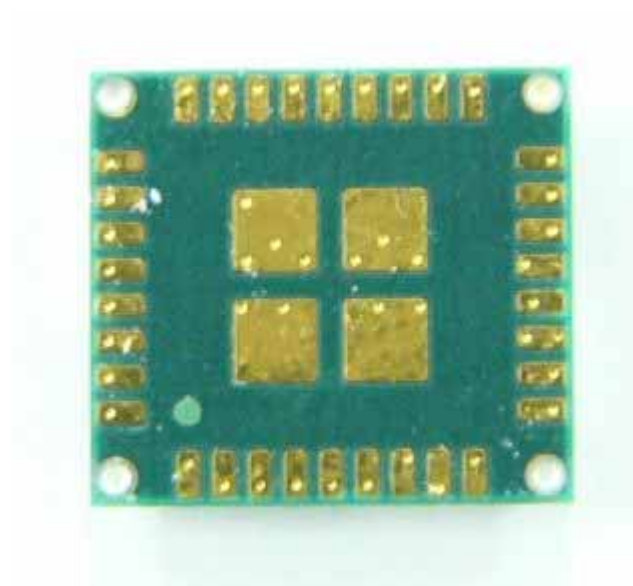
Bluetooth Card Top View



Bluetooth Card Bottom View



Bluetooth Module inside Top View



Bluetooth Module inside Bottom View

3) WWAN (UNDP-1) Photo



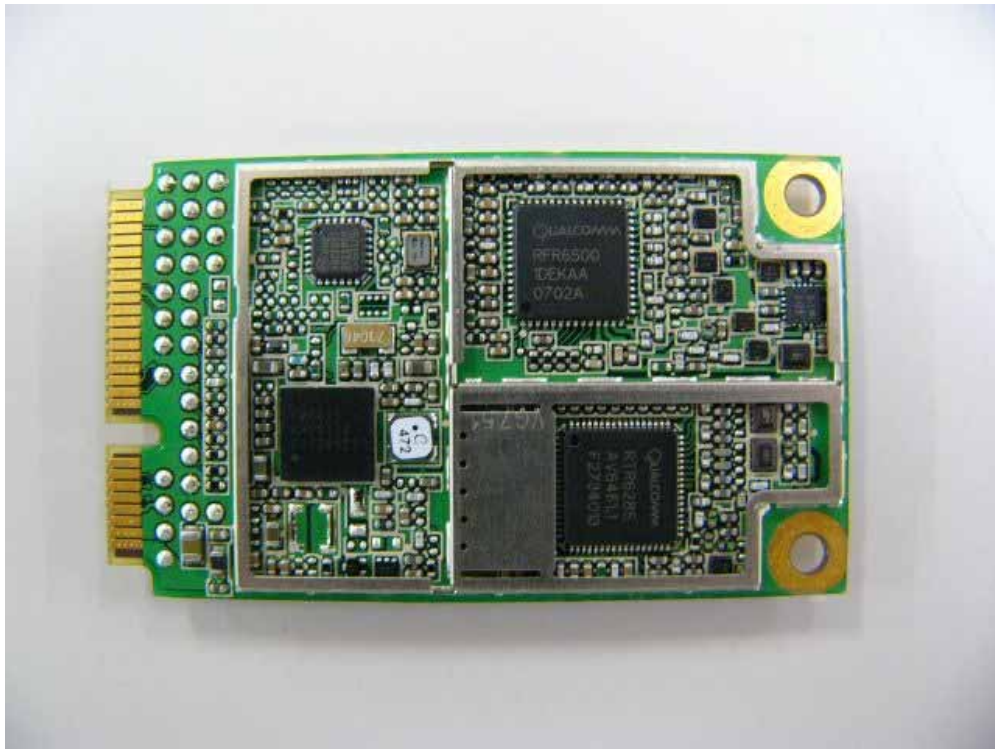
UNDP-1 Module Top View



UNDP-1 module Bottom View



UNDP-1 Module Interior Top View



UNDP-1 Module Interior Bottom View

#### 4. Antenna Position and Antenna photo





WLAN Main TX/RX Antenna



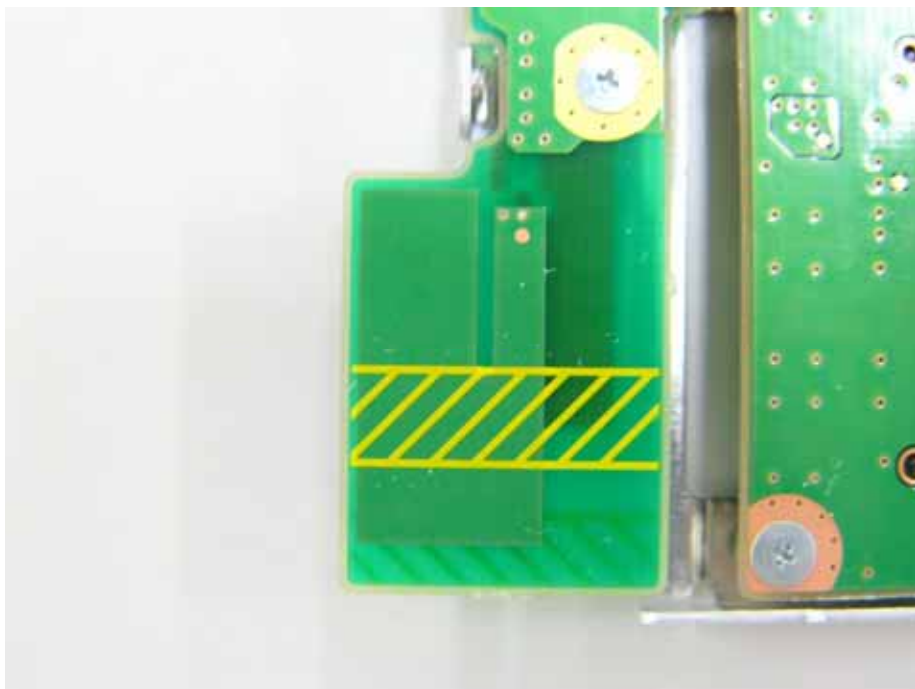
WLAN AUX TX/RX Antenna



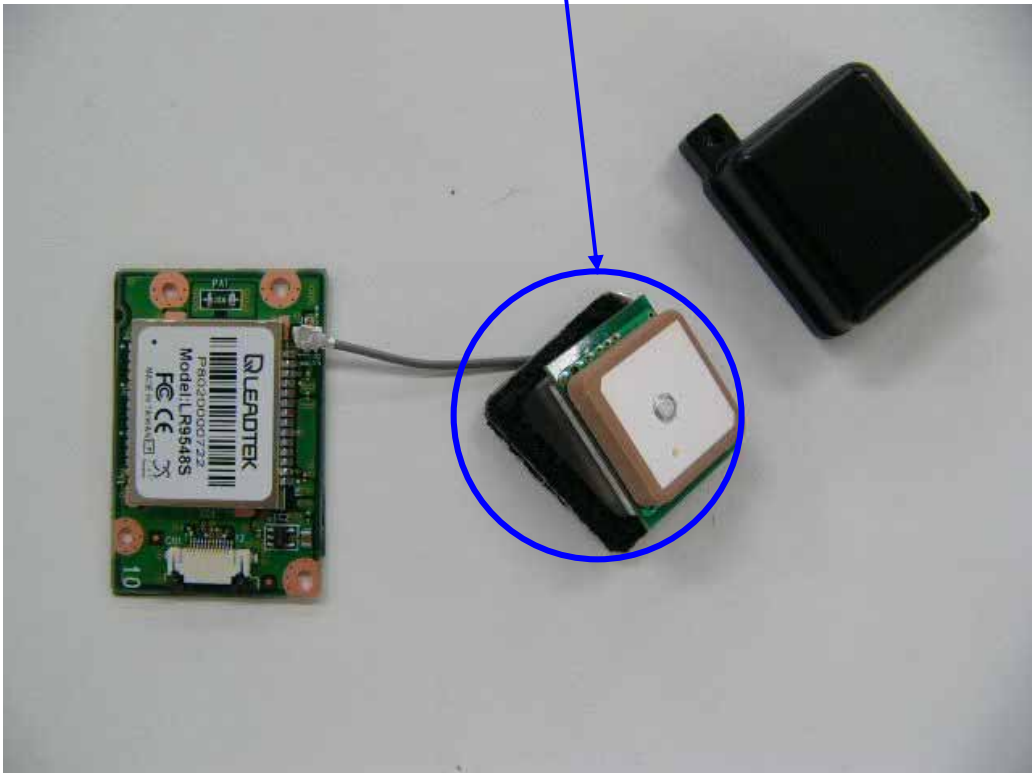
Bluetooth TX/RX Antenna



UNDP-1 Main TX/RX Antenna



UNDP-1 AUX RX only Antenna



GPS RX Antenna

## 5. Antenna Specification

WLAN Main TX/RX Antenna: Pattern Antenna

(Inverted F type: 0.94dBi max 2.4GHz)

(Inverted F type: 0.17dBi max 5GHz)

WLAN Aux TX/RX only Antenna: Pattern Antenna

(Inverted F type: -0.42dBi max 2.4GHz)

(Inverted F type: -0.57dBi max 5GHz)

Bluetooth TX/RX Antenna: Pattern Antenna (Inverted F type: -0.62dBi max)

UNDP-1 Main TX/RX Antenna: Pattern Antenna (Inverted-F type: 0.10dBi max)

UNDP-1 Aux RX only Antenna: Pattern Antenna

GPS RX only Antenna: Module Antenna