

2. Module Position



BlueTooth Module

WLAN Module



HSDAP3.6 Module Pack Slide Position



HSDPA3.6 (EU860D)Module Pack

3. Module Photo

1) WLAN



WLAN Exterior Top View



WLAN Exterior Bottom View



WLAN inside Top View



WLAN inside Bottom View

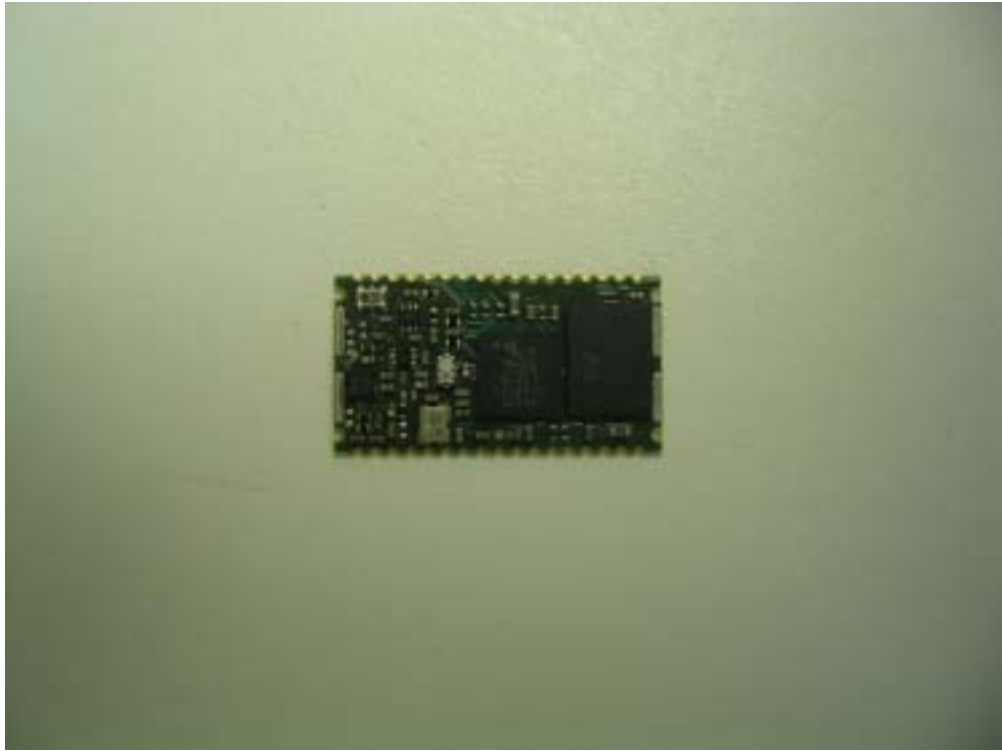
2) BlueTooth



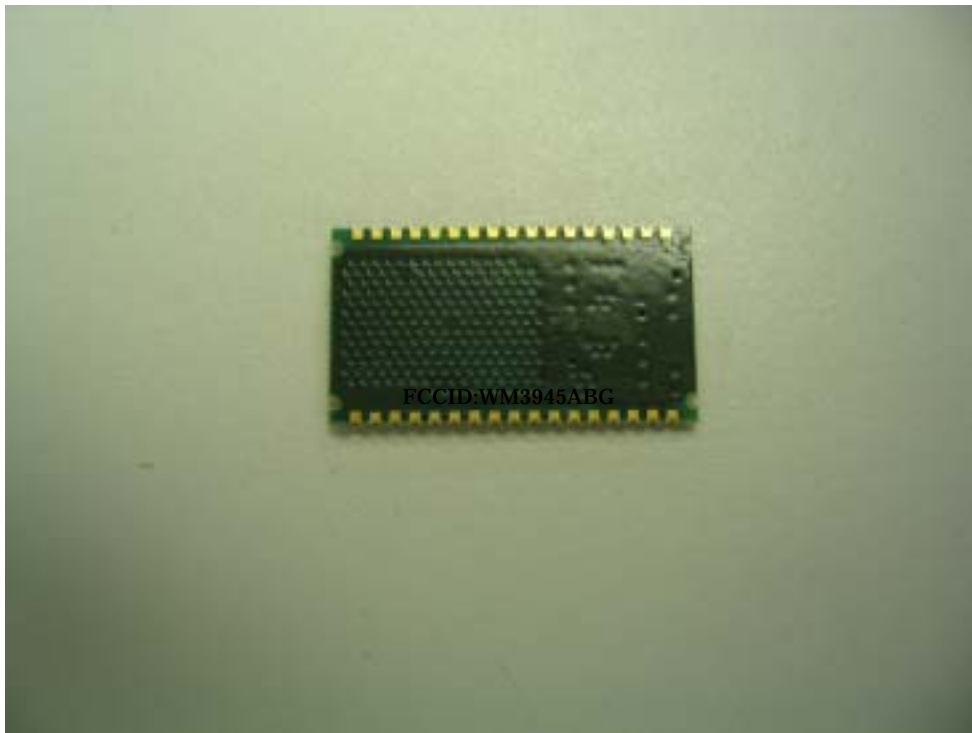
BlueTooth Card Top View



BlueTooth Card Bottom View



BlueTooth Module inside Top View

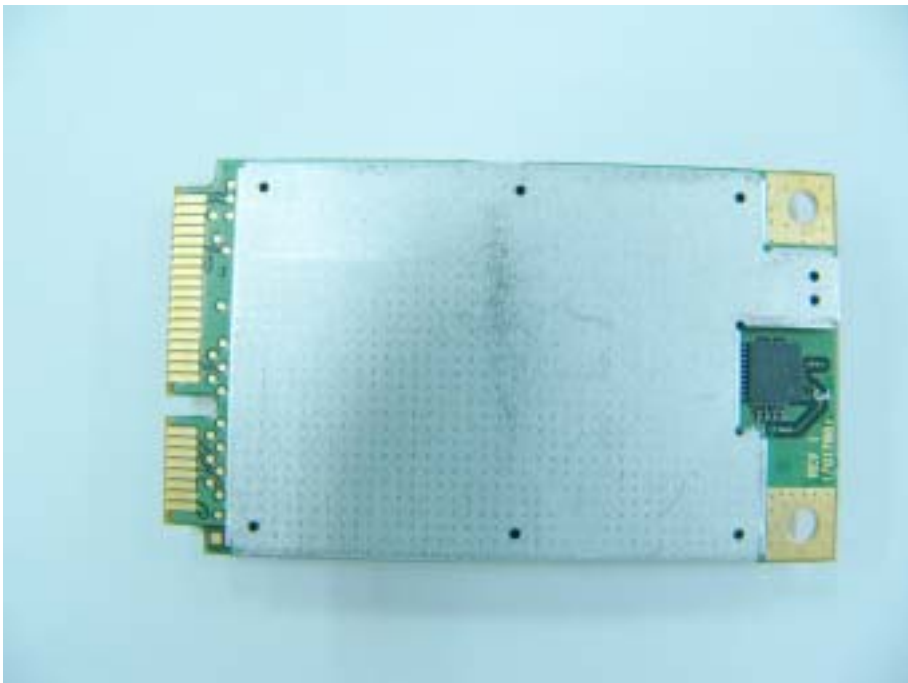


BlueTooth Module inside Bottom View

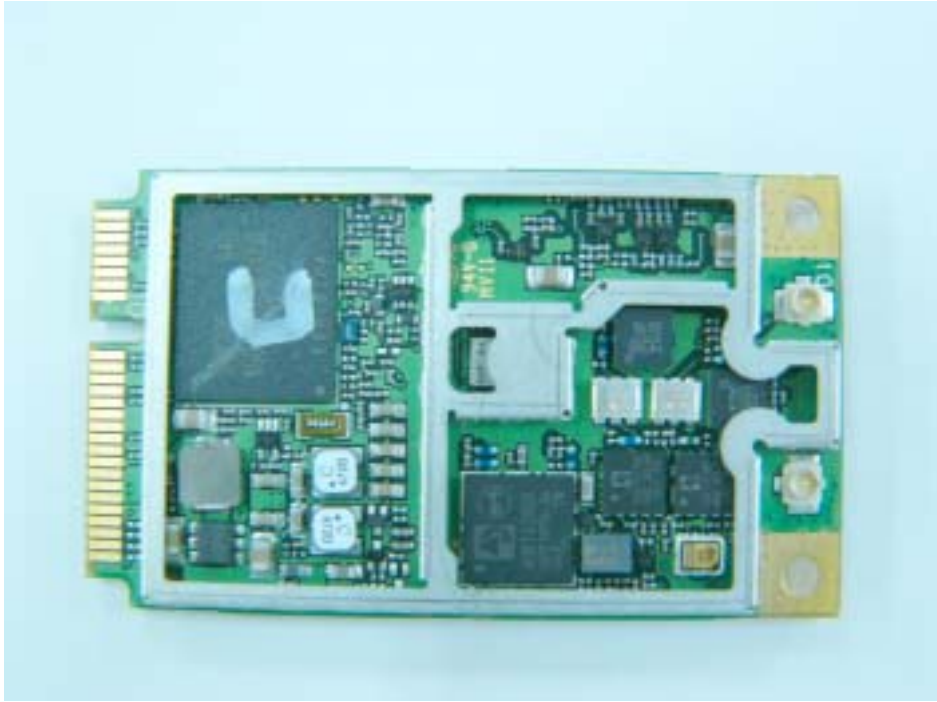
3) HSDPA3.6 Photo



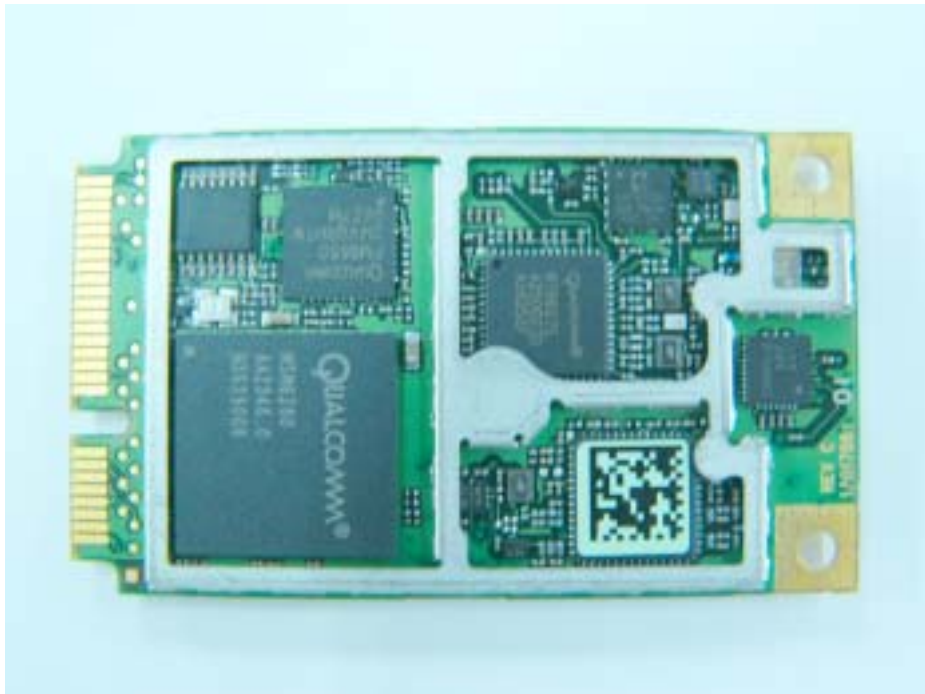
EU860D Module Top View



EU860D module Bottom View



EU860D Module Interior Top View



EU860D Module Interior Bottom View

4. Antenna Position and Antenna photo

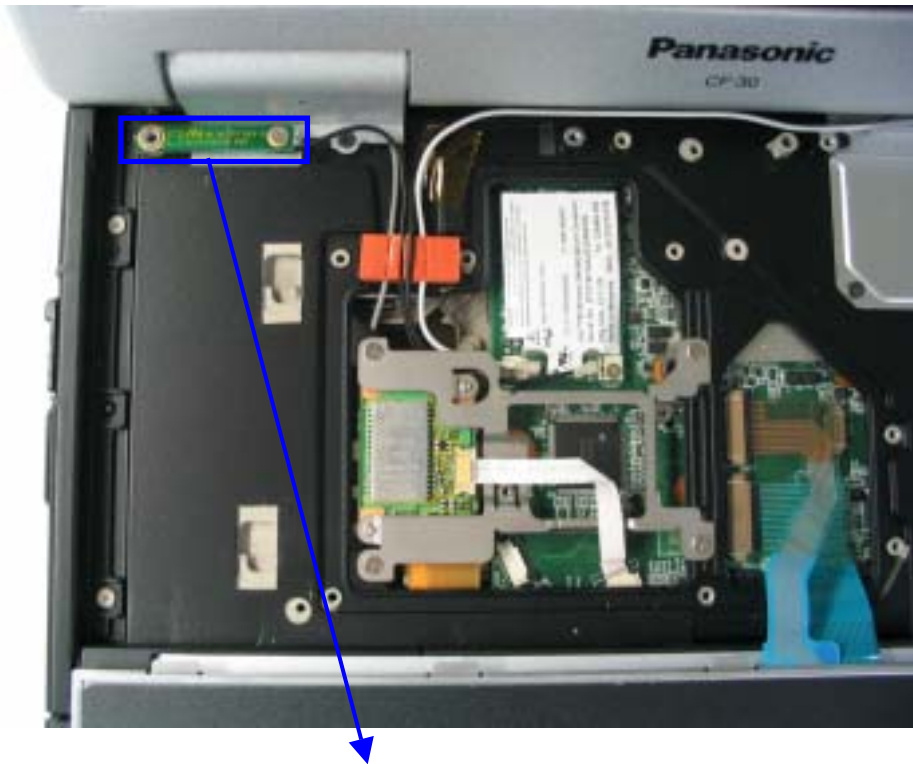




WLAN Main TX/RX Antenna



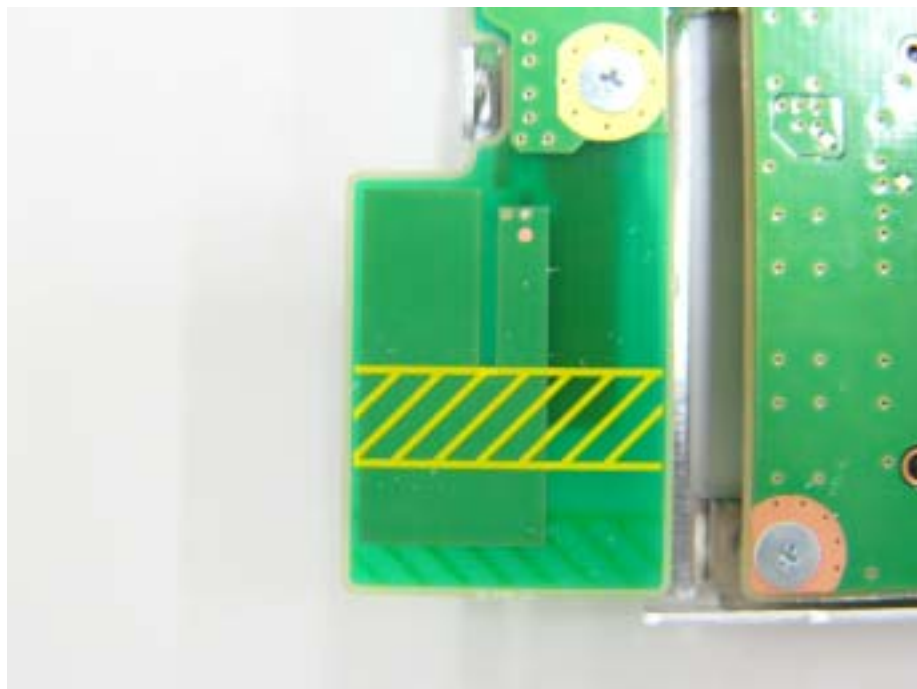
WLAN AUX TX/RX Antenna



BlueTooth TX/RX Antenna



HSDPA Main TX/RX Antenna



EVDO AUX RX only Antenna

5) Antenna Specification

WLAN Main TX/RX Antenna: Pattern Antenna (Inverted F type: 0.94dBi max)

WLAN Aux TX/RX Antenna: Pattern Antenna (Inverted F type: -0.42dBi max)

Bluetooth TX/RX Antenna: Pattern Antenna (Inverted F type: -0.62dBi max)

HSDPA Main TX/RX Antenna: Pattern Antenna (Inverted-F type: 0.10dBi max)

HSDPA Aux RX only Antenna: Pattern Antenna (Inverted-F type)