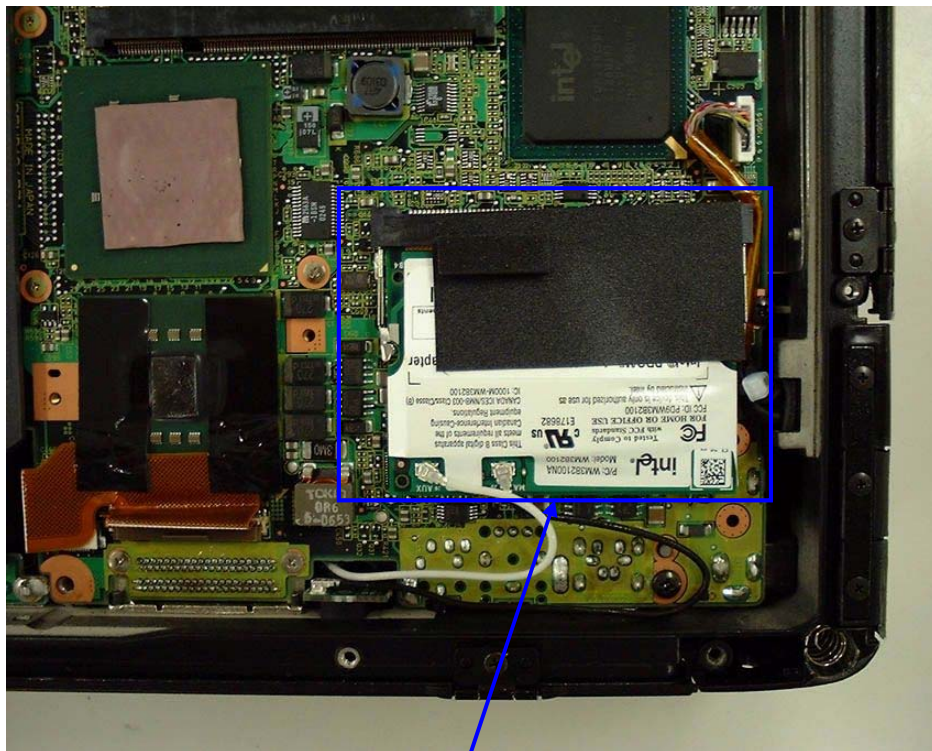
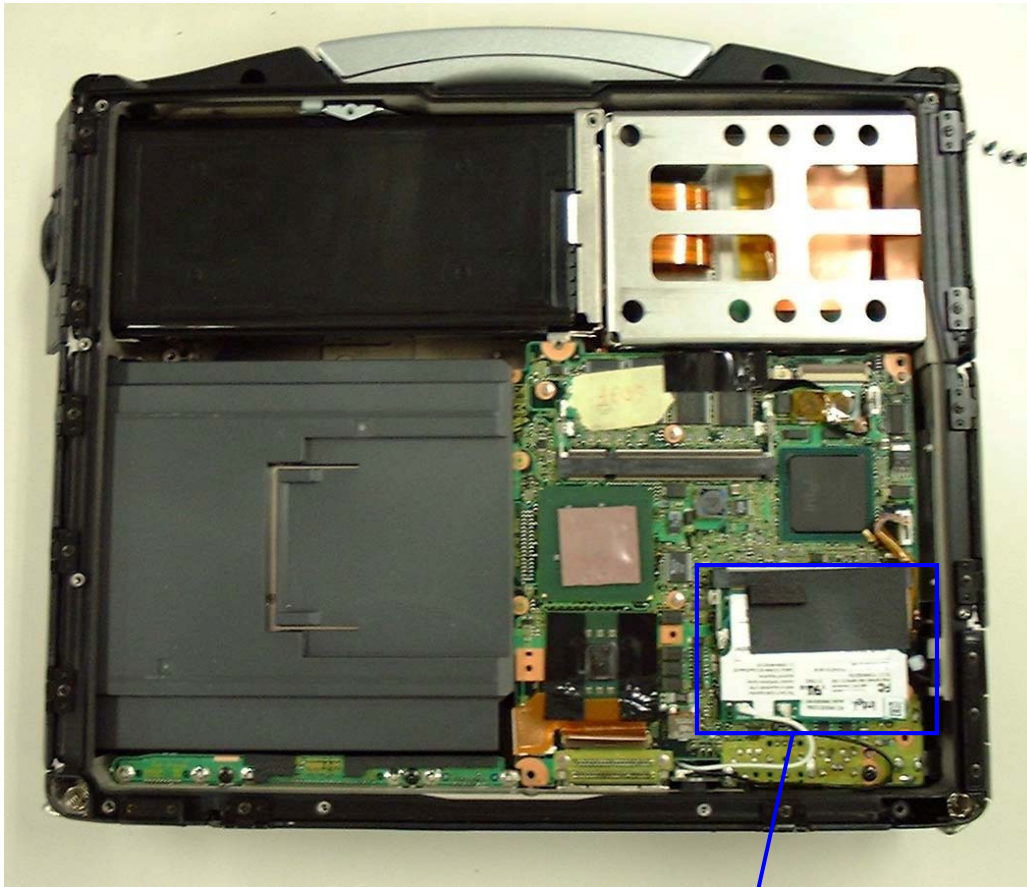
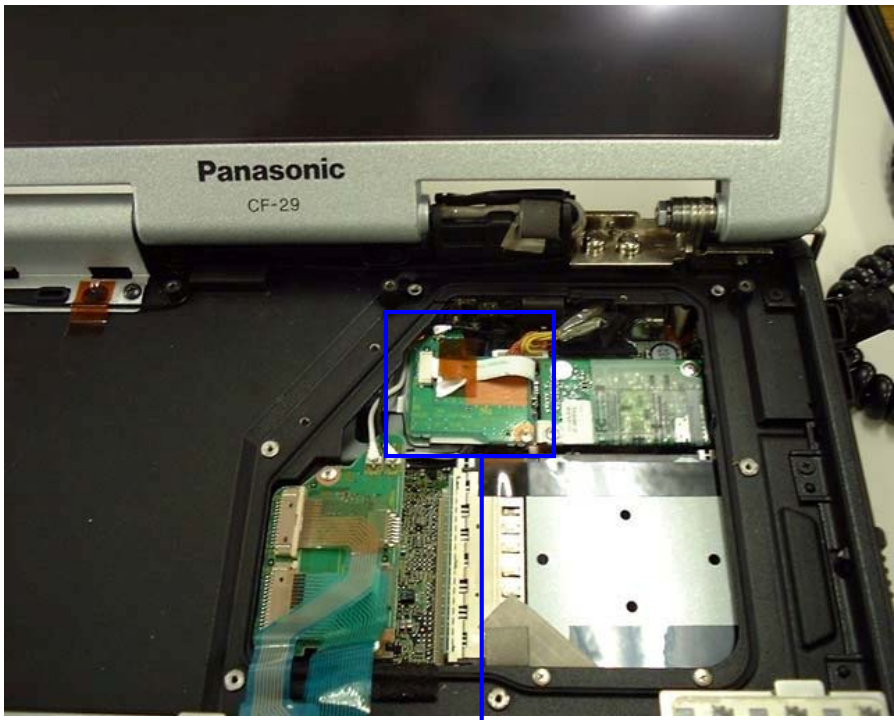


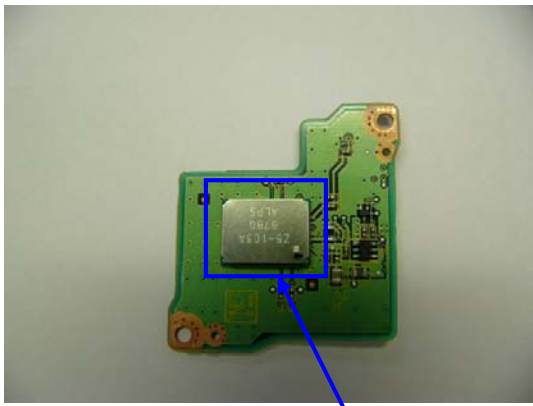
2. Module position



WLAN Module



Reverse Side



Bluetooth Module



HSDPA Module Adapter Position



HSDPA Module Pack Slide Position



HSDPA Module Pack

3. Module photo

1) WLAN



WLAN Top View



WLAN Bottom View



WLAN inside Top View

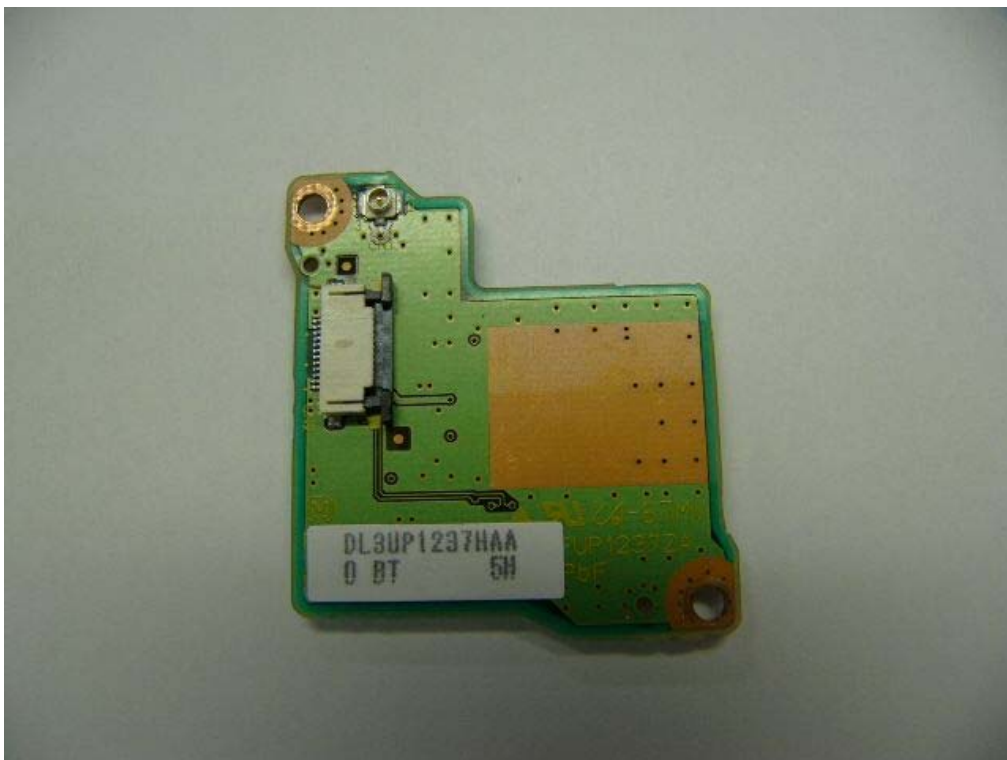


WLAN inside Bottom View

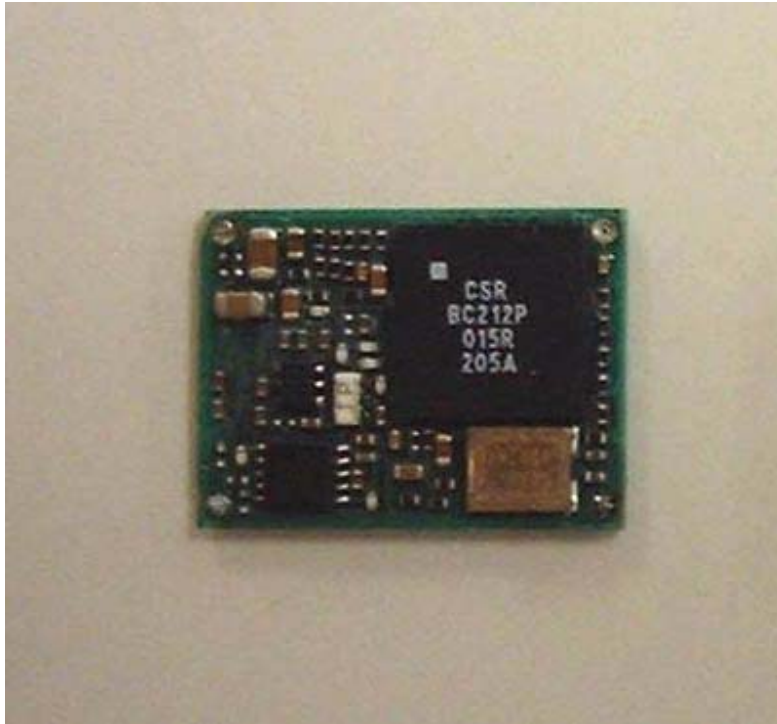
2) Bluetooth



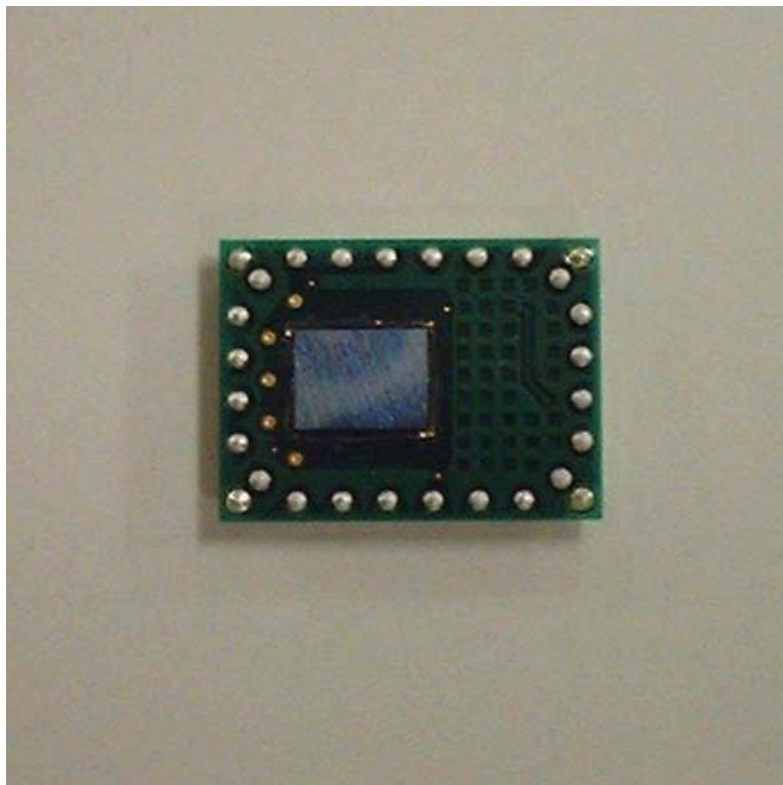
Top View of Daughter Board with Bluetooth Module



Bottom View of Daughter Board with Bluetooth Module



Bluetooth Module without shield



Bottom View of Bluetooth Module

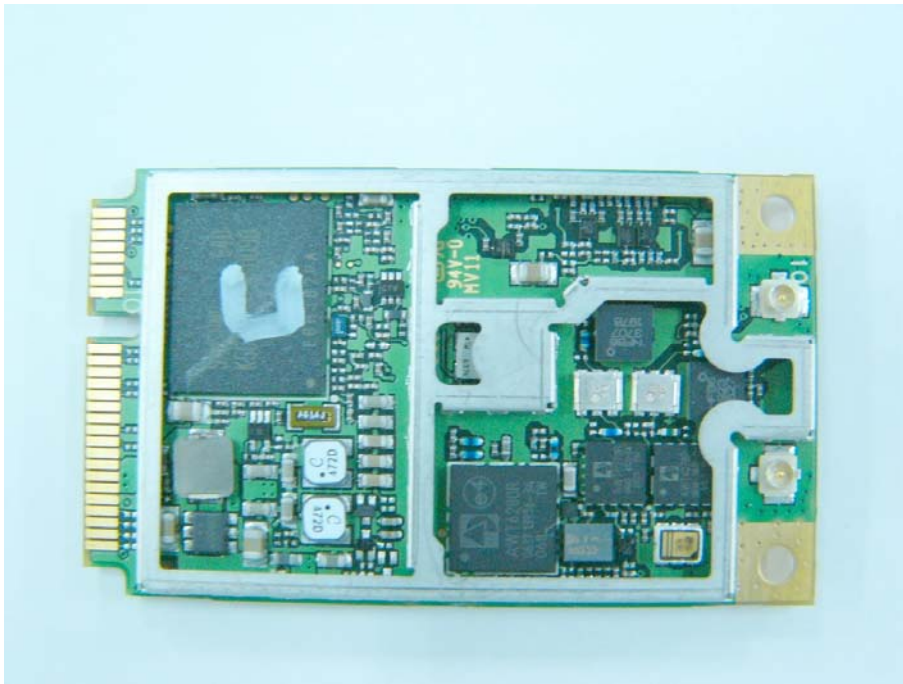
3) HSDPA3.6



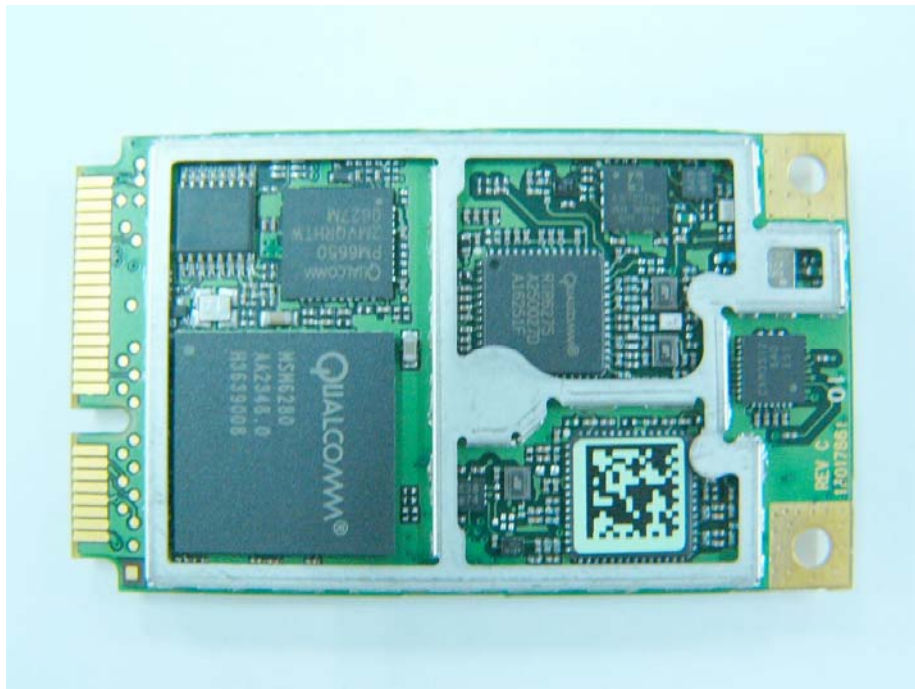
HSDPA Module Top View



HSDPA Module Bottom View



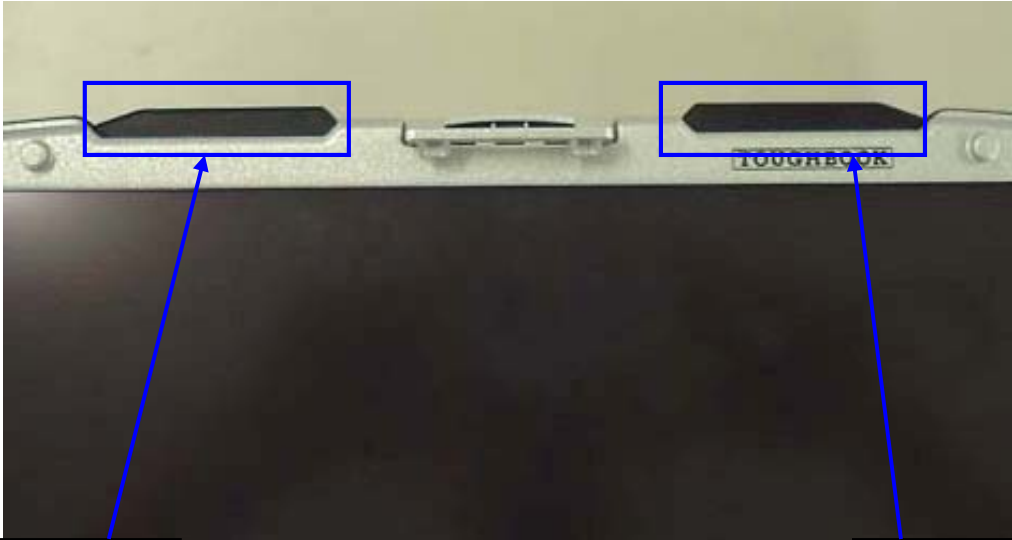
HSDPA Module Interior Top View



HSDPA Module Interior Bottom View

4. Antenna position

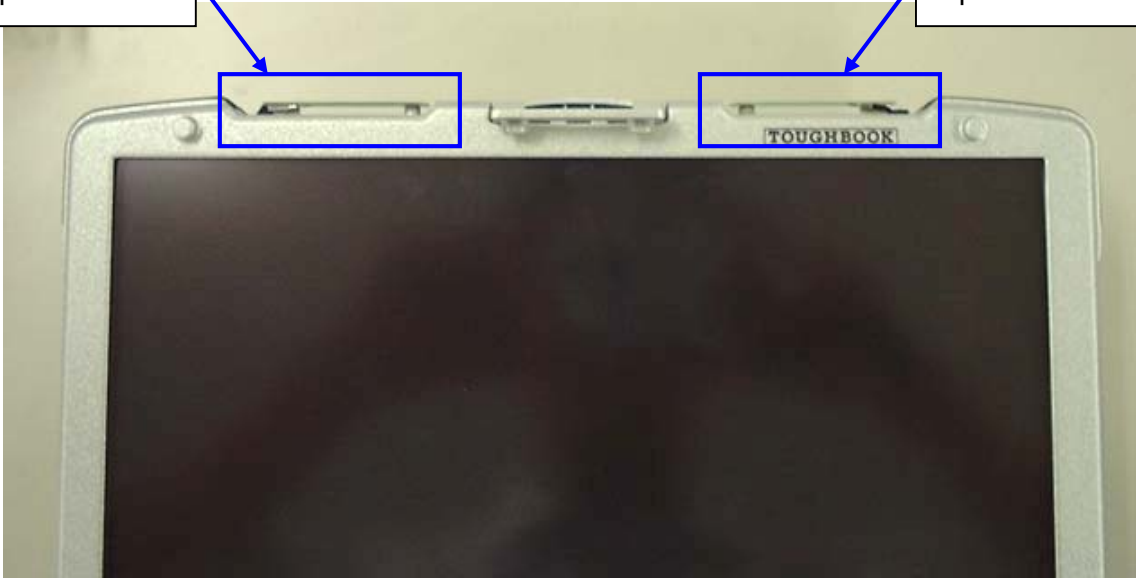




WLAN Aux TX/RX
Antenna Cover

WLAN Main TX/RX
Antenna Cover

Antenna Cover
Open



Antenna Cover
Open



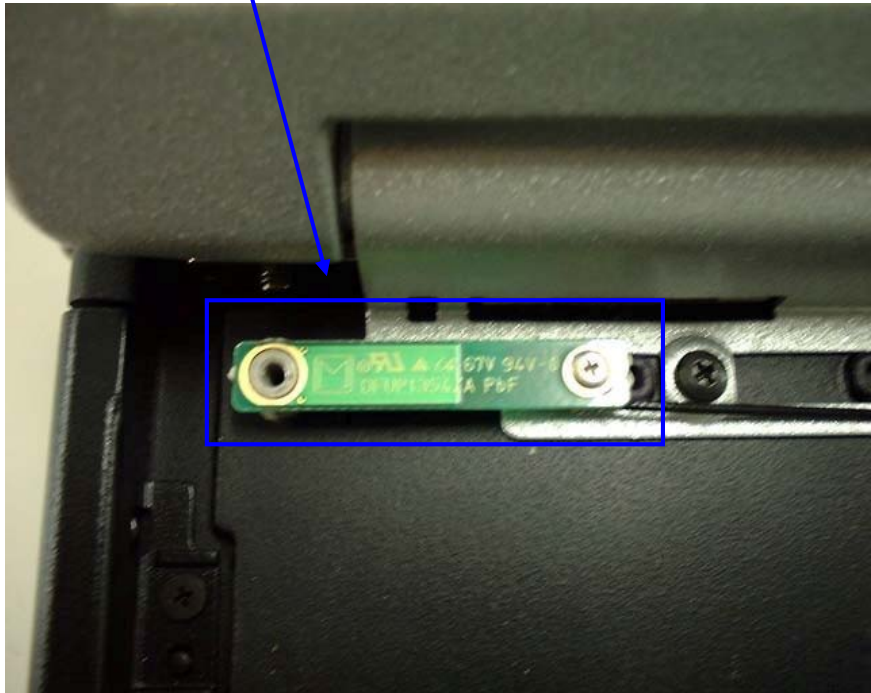
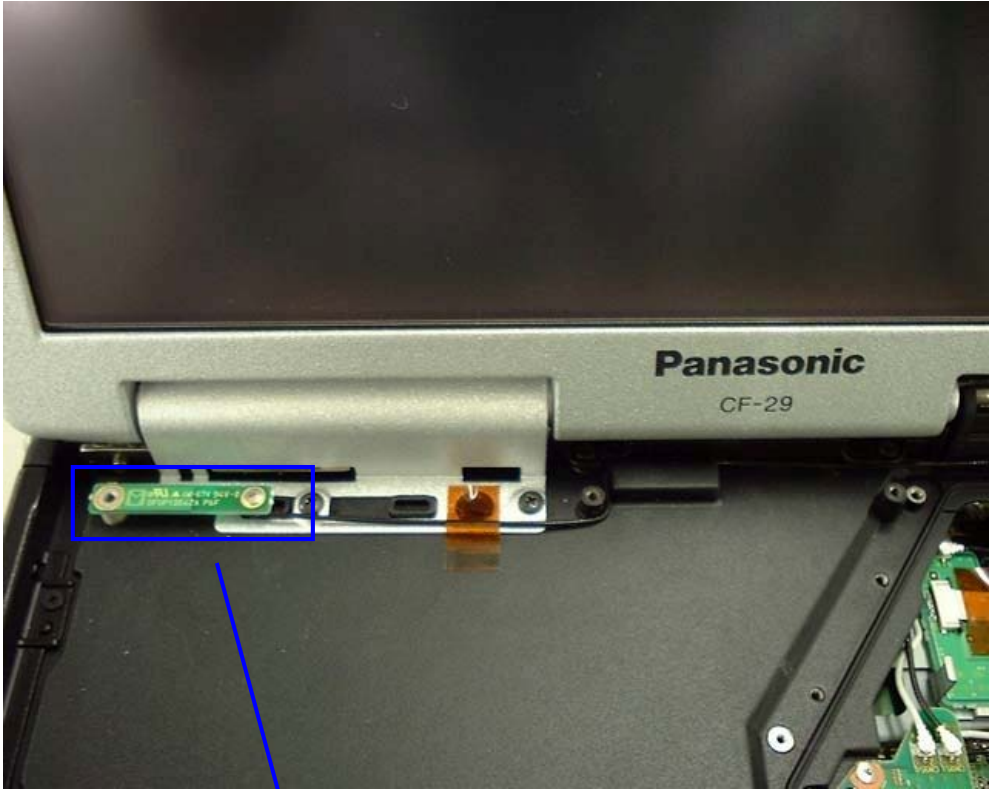
Top View



WLAN Aux TX/RX Antenna View



WLAN Main TX/RX Antenna View



Bluetooth TX/RX Antenna



HSDPA Whip Antenna



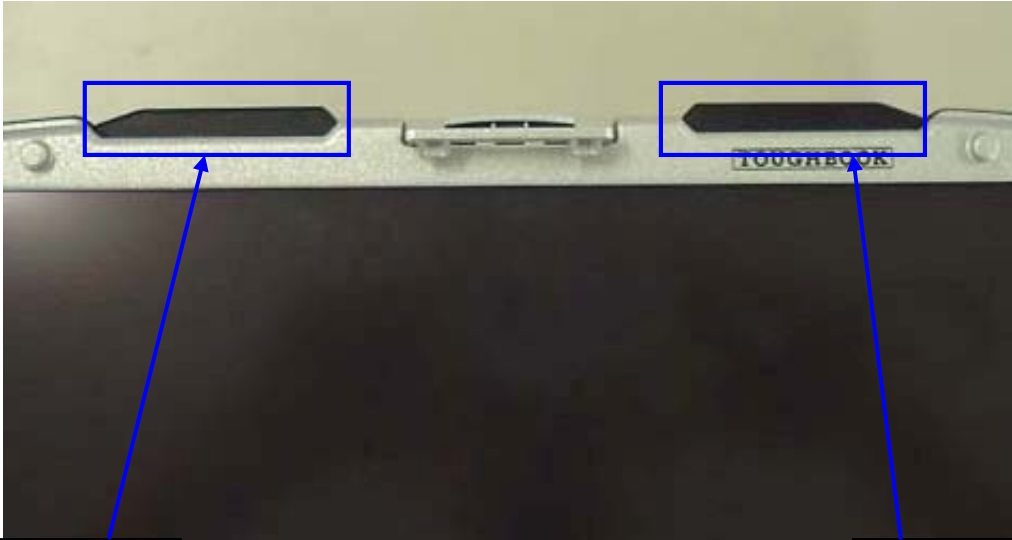
HSDPA TXRX Antenna I/F PWB

5. Antenna Specification

WLAN Main TX/RX Antenna: Pattern Antenna (Inverted F type: 1.86dBi max)
WLAN Aux TX/RX Antenna: Pattern Antenna (Inverted F type: 2.86dBi max)
Bluetooth Antenna: Pattern Antenna (Inverted F type: 1.47dBi max)
HSDPA Antenna: Whip Antenna (Whip type: 2.15dBi max)

4. Antenna position



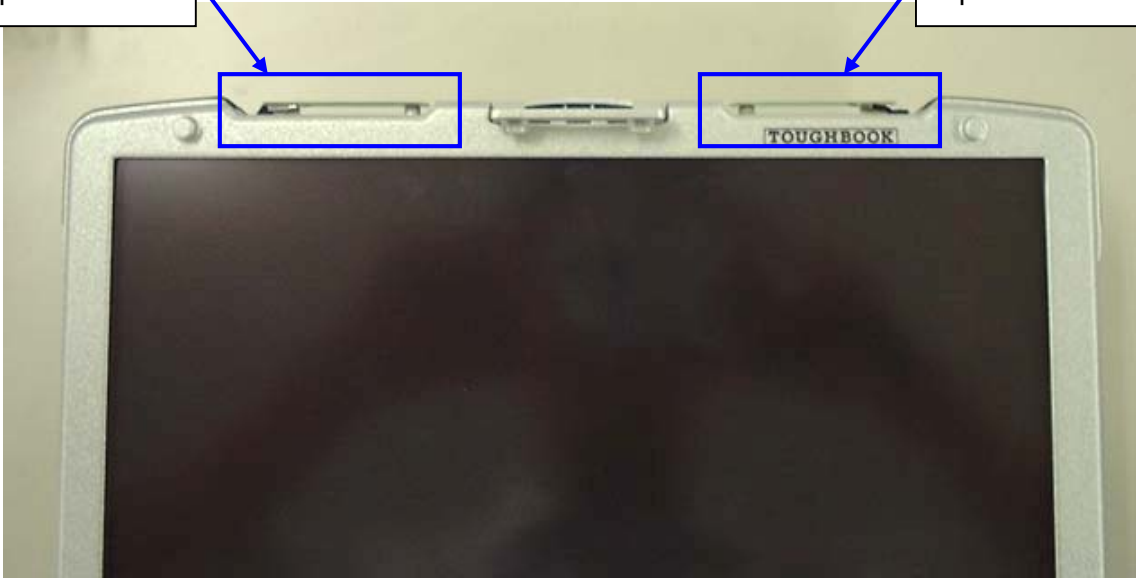


WLAN Aux TX/RX
Antenna Cover

WLAN Main TX/RX
Antenna Cover

Antenna Cover
Open

Antenna Cover
Open





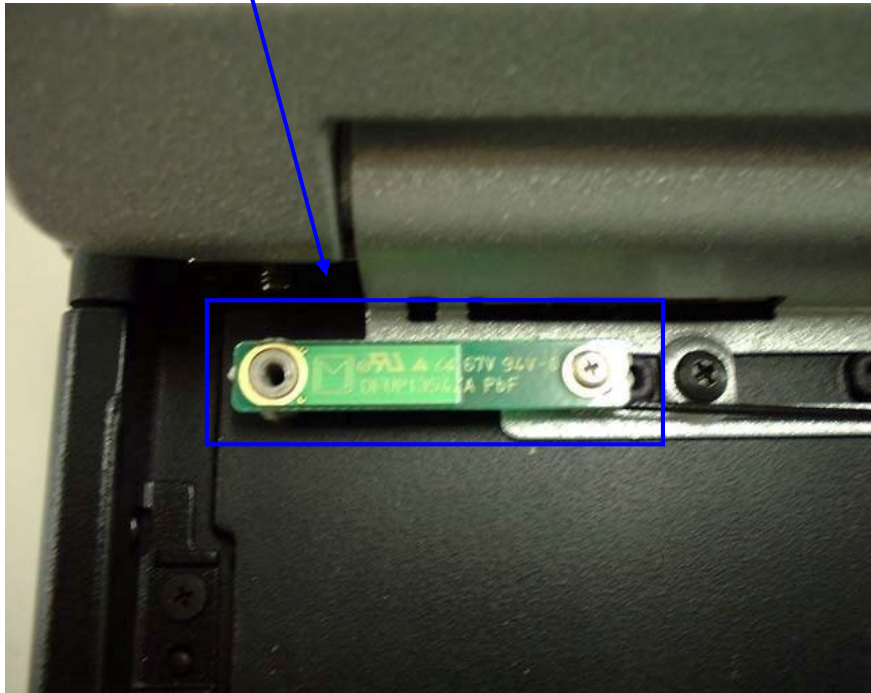
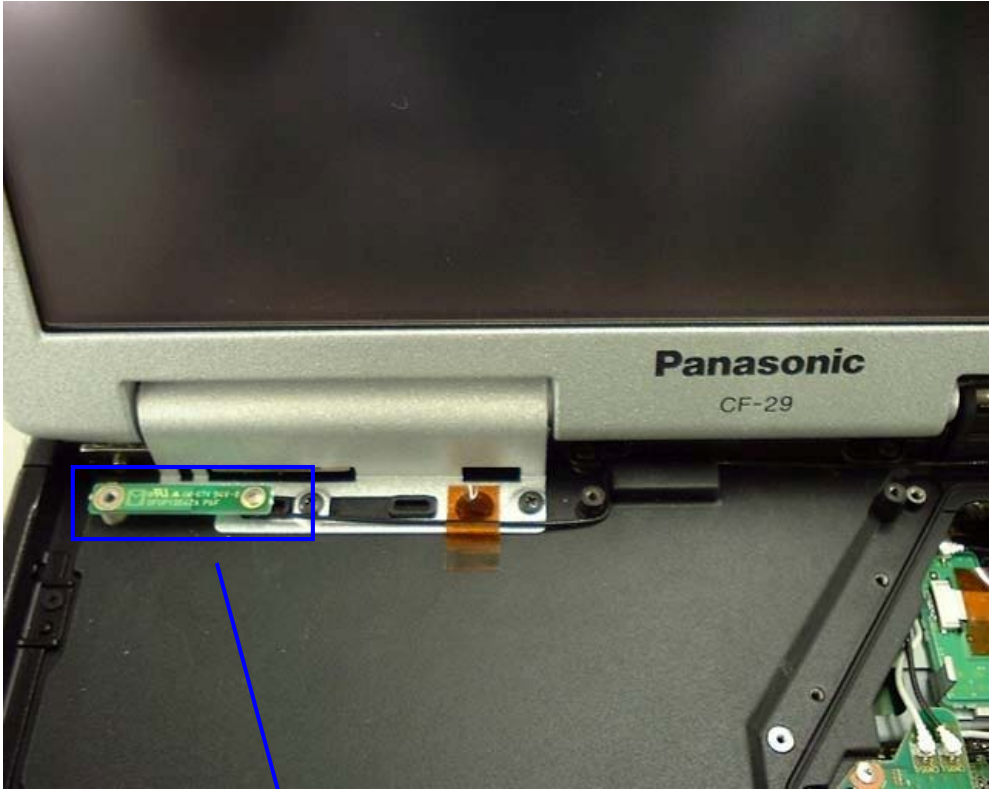
Top View



WLAN Aux TX/RX Antenna View



WLAN Main TX/RX Antenna View



Bluetooth TX/RX Antenna



HSDPA Whip Antenna



HSDPA TXRX Antenna I/F PWB

5. Antenna Specification

WLAN Main TX/RX Antenna: Pattern Antenna (Inverted F type: 1.86dBi max)
WLAN Aux TX/RX Antenna: Pattern Antenna (Inverted F type: 2.86dBi max)
Bluetooth Antenna: Pattern Antenna (Inverted F type: 1.47dBi max)
HSDPA Antenna: Whip Antenna (Whip type: 2.15dBi max)