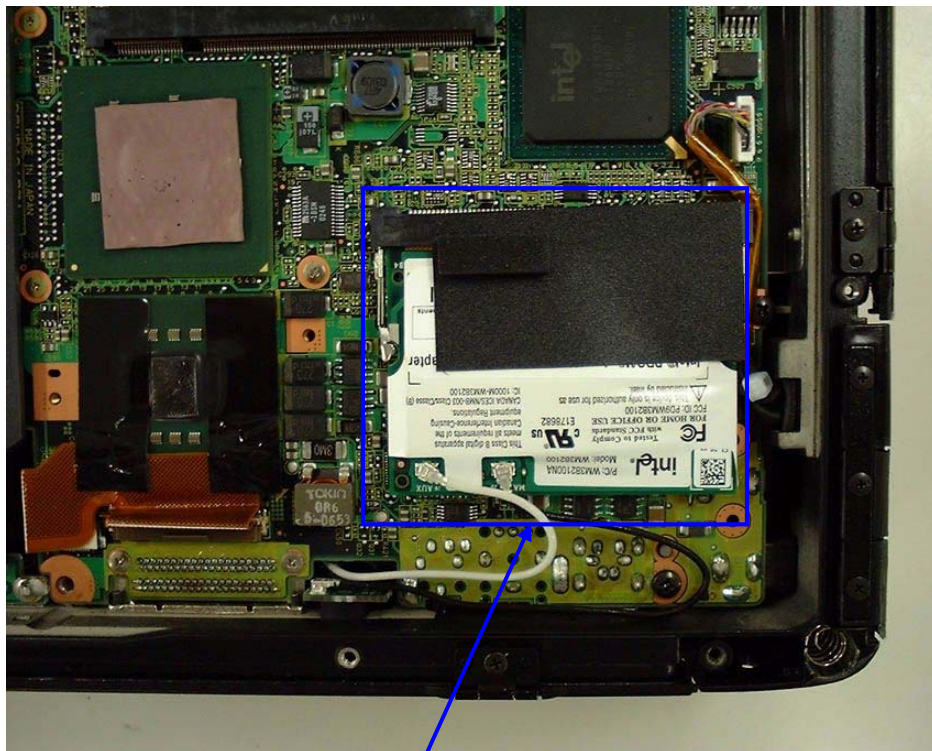
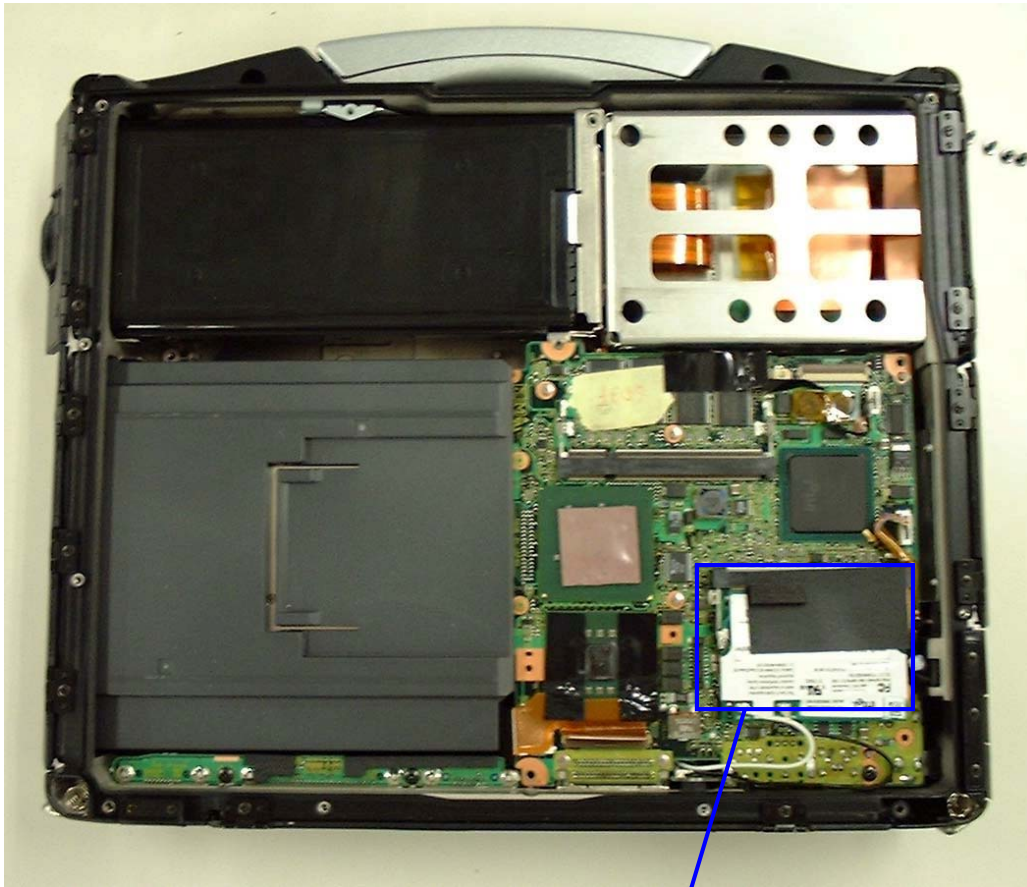
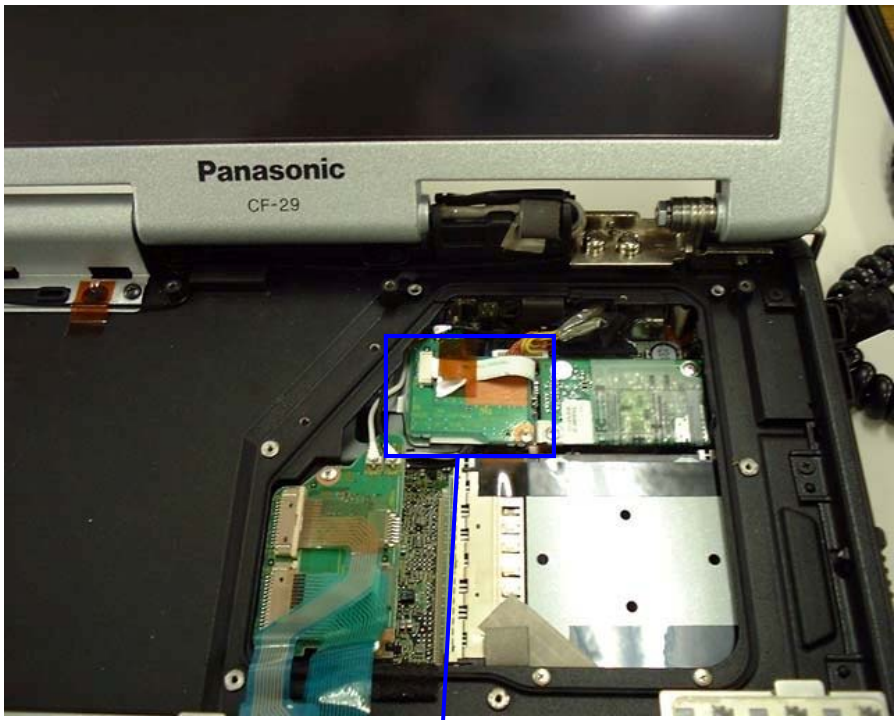


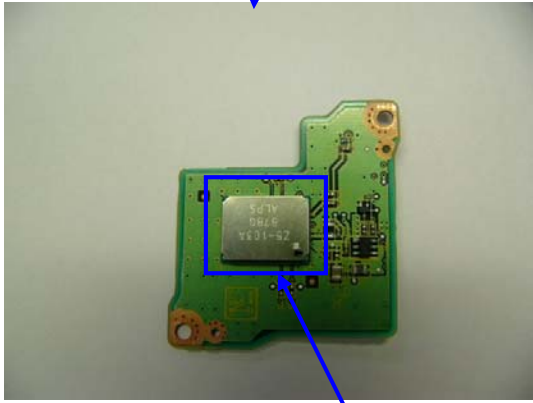
2. Module position



WLAN Module



Reverse Side



Bluetooth Module



EVDO rev.A Module Adapter Position



EVDO rev.A Module Pack Slide Position

3. Module photo

1) WLAN



WLAN Top View



WLAN Bottom View



WLAN inside Top View

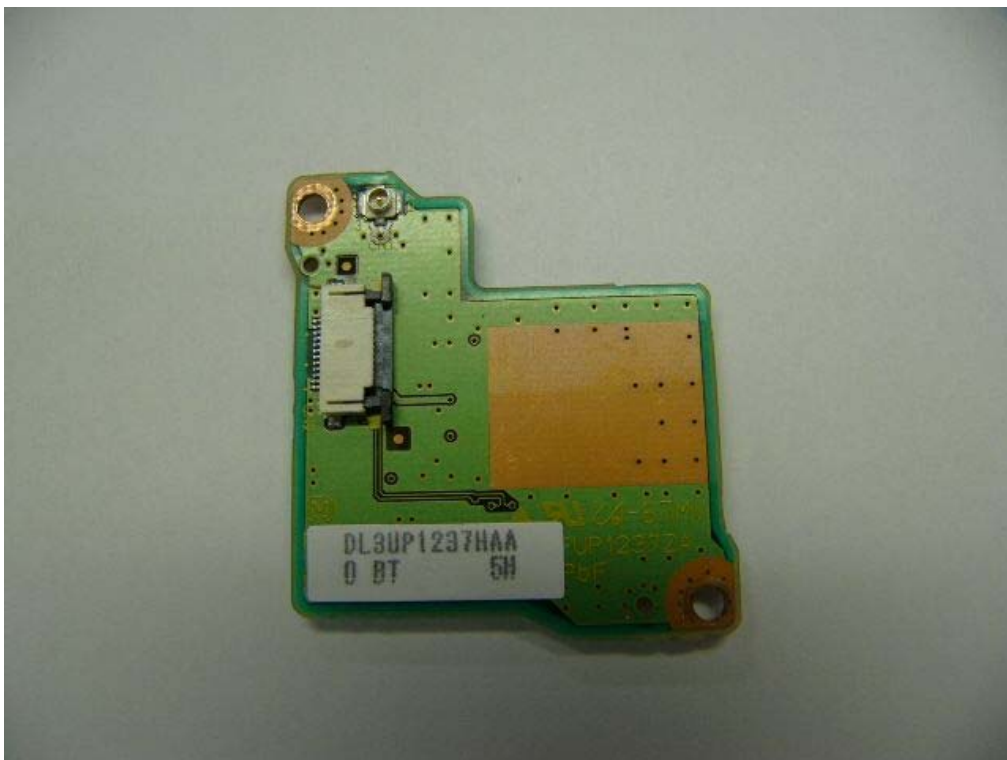


WLAN inside Bottom View

2) Bluetooth



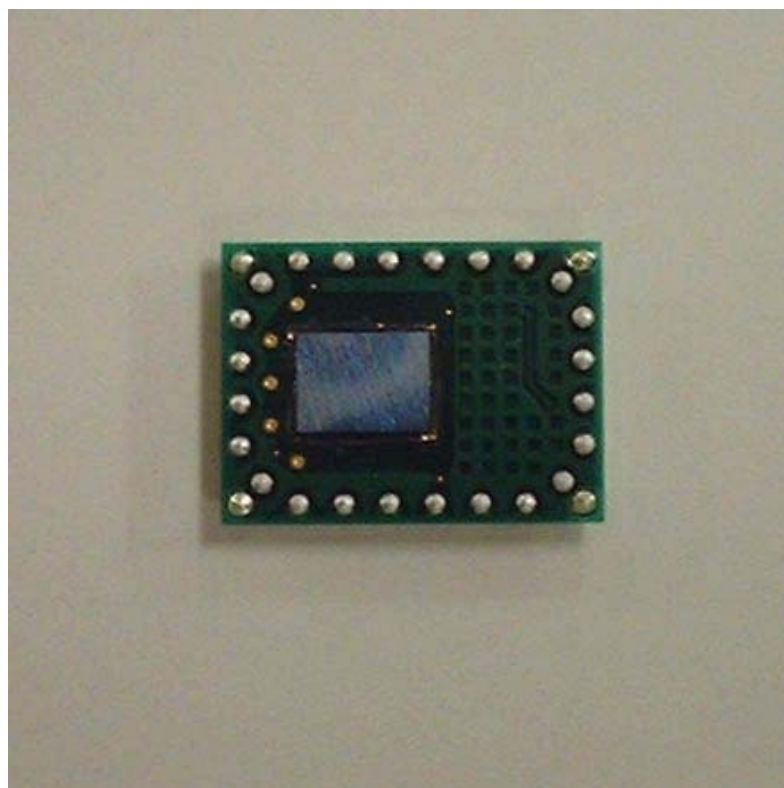
Top View of Daughter Board with Bluetooth Module



Bottom View of Daughter Board with Bluetooth Module



Bluetooth Module without shield



Bottom View of Bluetooth Module

3) EVDOrev.A



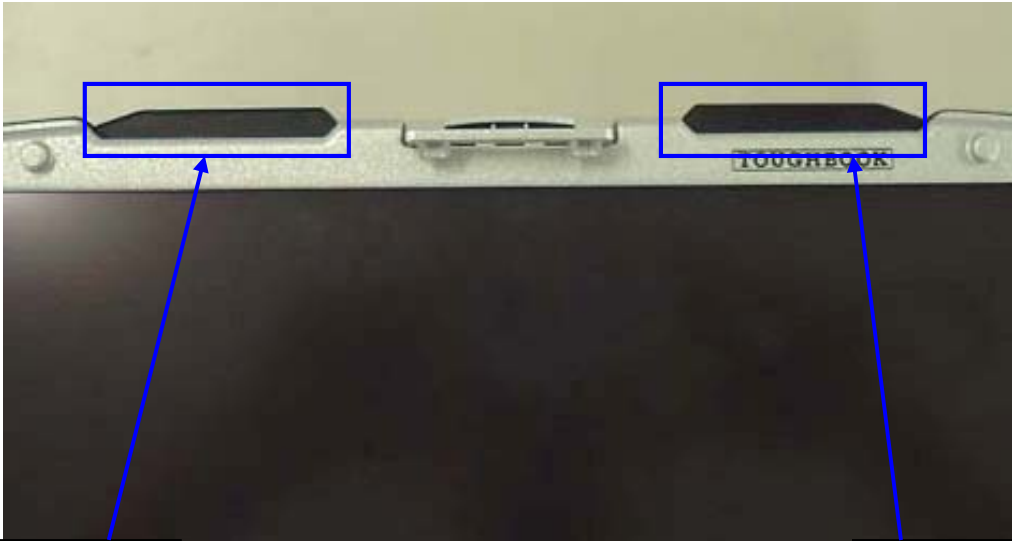
EVDO Module Top View



EVDO module Bottom View

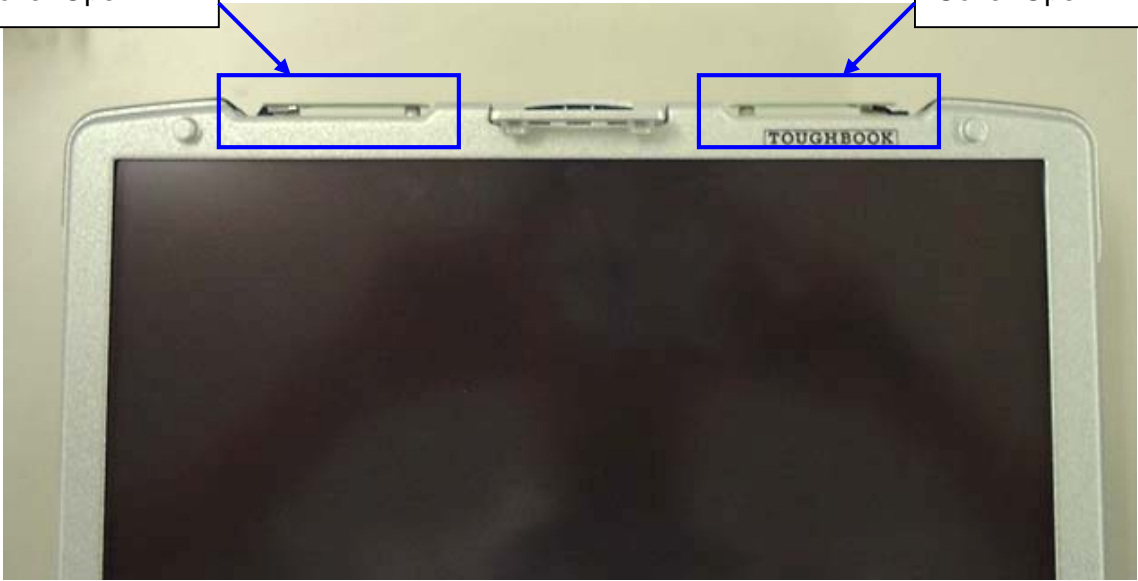
4. Antenna position





WLAN Aux TX/RX
Antenna Cover

WLAN Main TX/RX
Antenna Cover



WLAN Antenna
Cover Open

WLAN Antenna
Cover Open



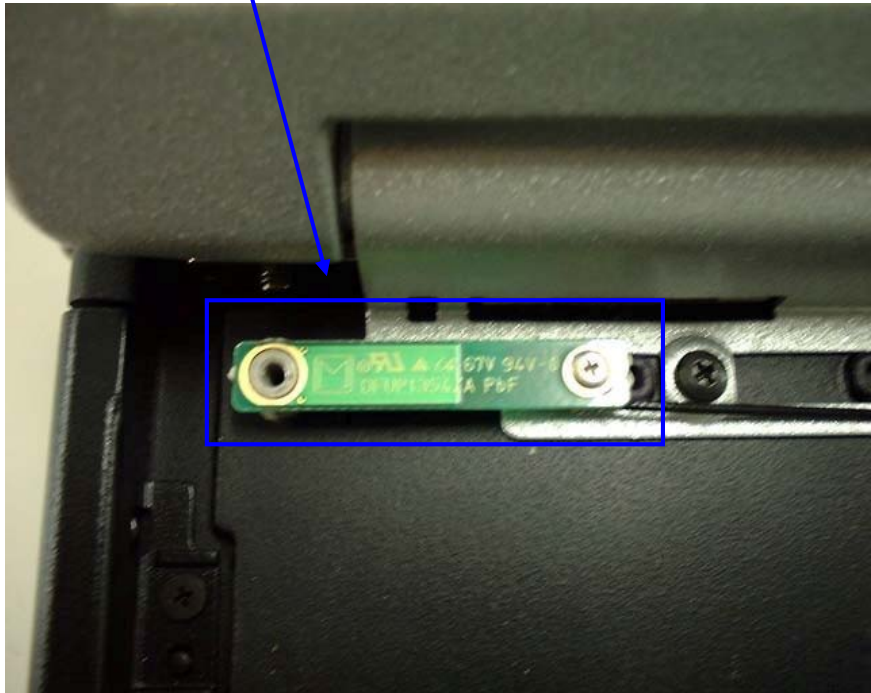
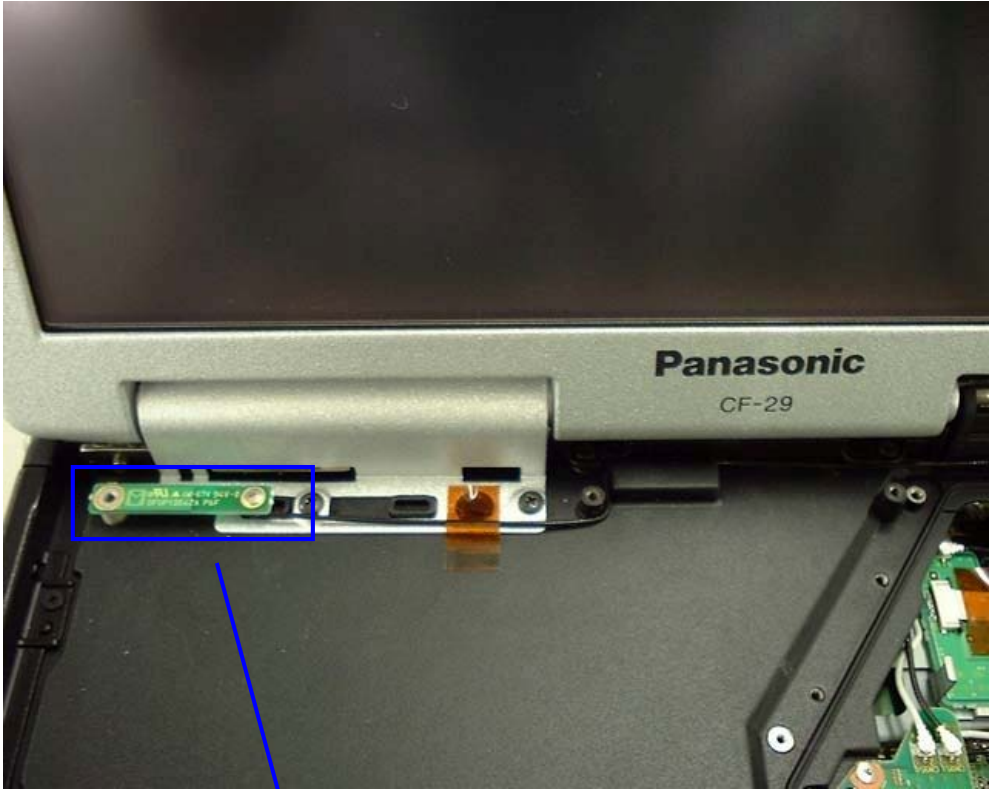
Top View



WLAN Aux TX/RX Antenna View



WLAN Main TX/RX Antenna View



Bluetooth TX/RX Antenna



EVD0rev.A Whip Antenna



EVD0rev.A TX/RX Antenna I/F PWB

5. Antenna Specification

WLAN Main TX/RX Antenna: Pattern Antenna (Inverted F type: 1.86dBi max)

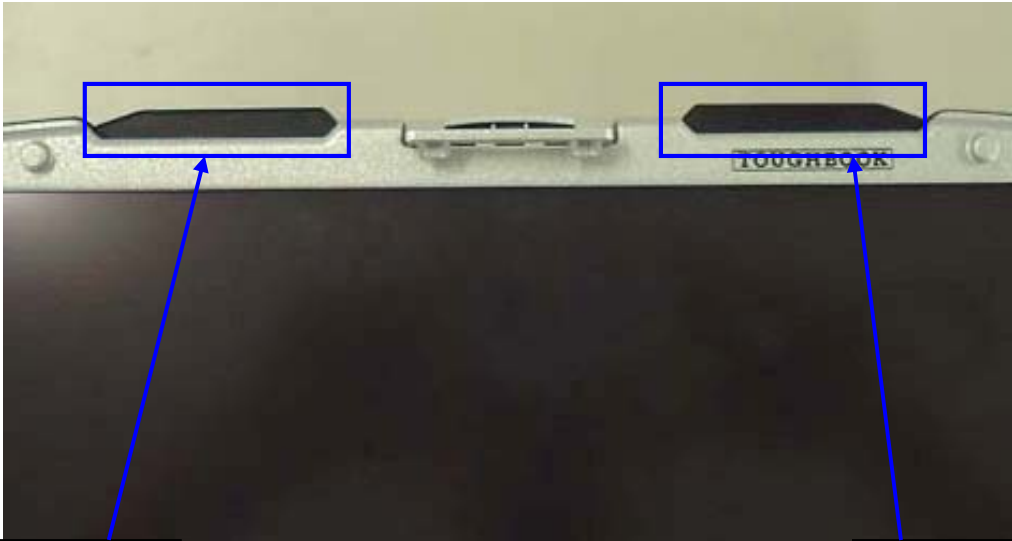
WLAN Aux TX/RX Antenna: Pattern Antenna (Inverted F type: 2.86dBi max)

Bluetooth TX/RX Antenna: Pattern Antenna (Inverted F type: 1.47dBi max)

EVDO TX/RX Antenna: Whip Antenna (Whip type: 2.15dBi max)

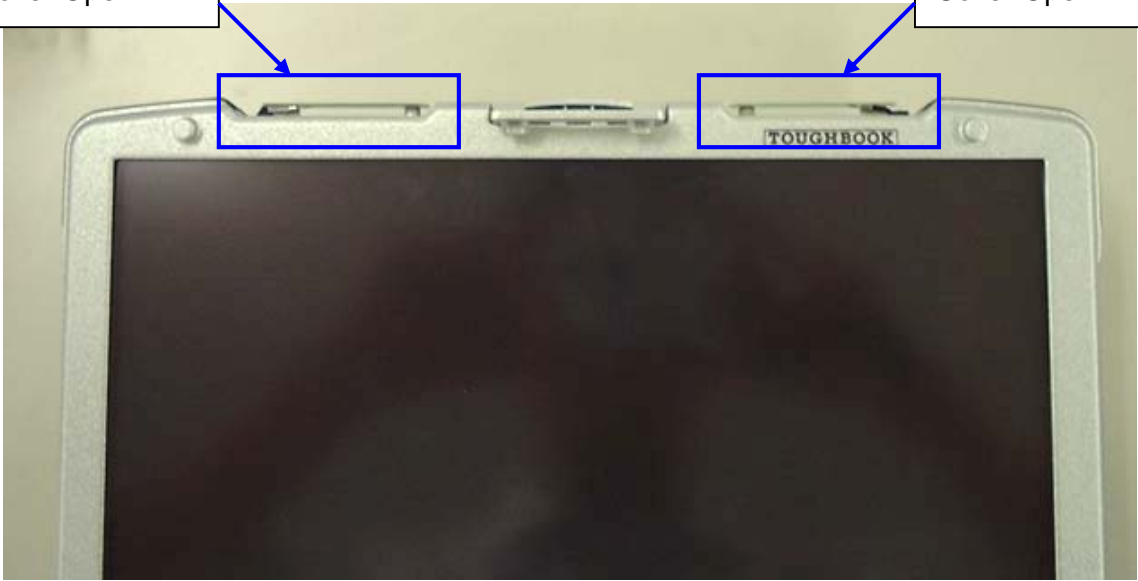
4. Antenna position





WLAN Aux TX/RX
Antenna Cover

WLAN Main TX/RX
Antenna Cover



WLAN Antenna
Cover Open

WLAN Antenna
Cover Open



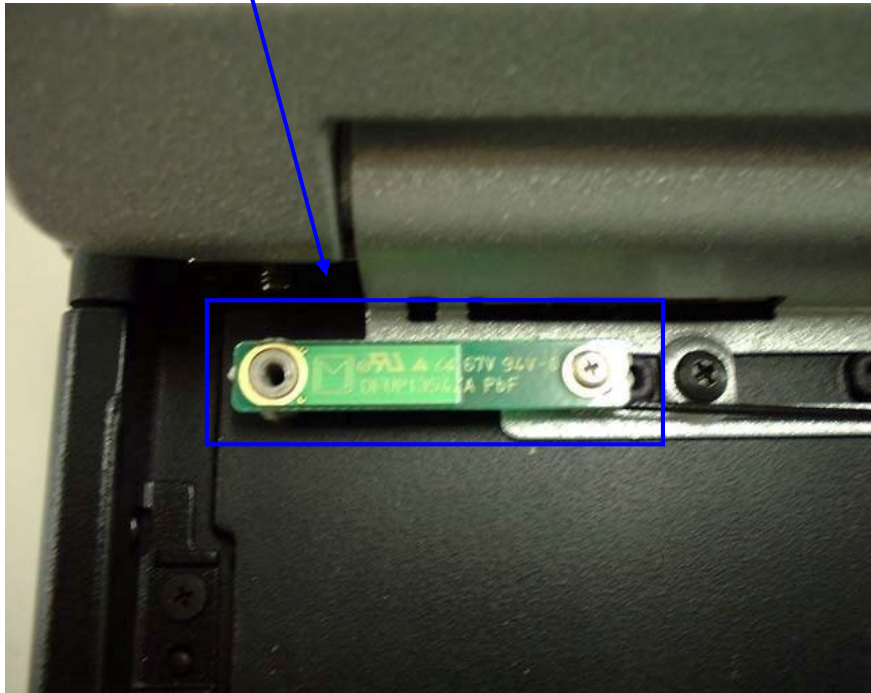
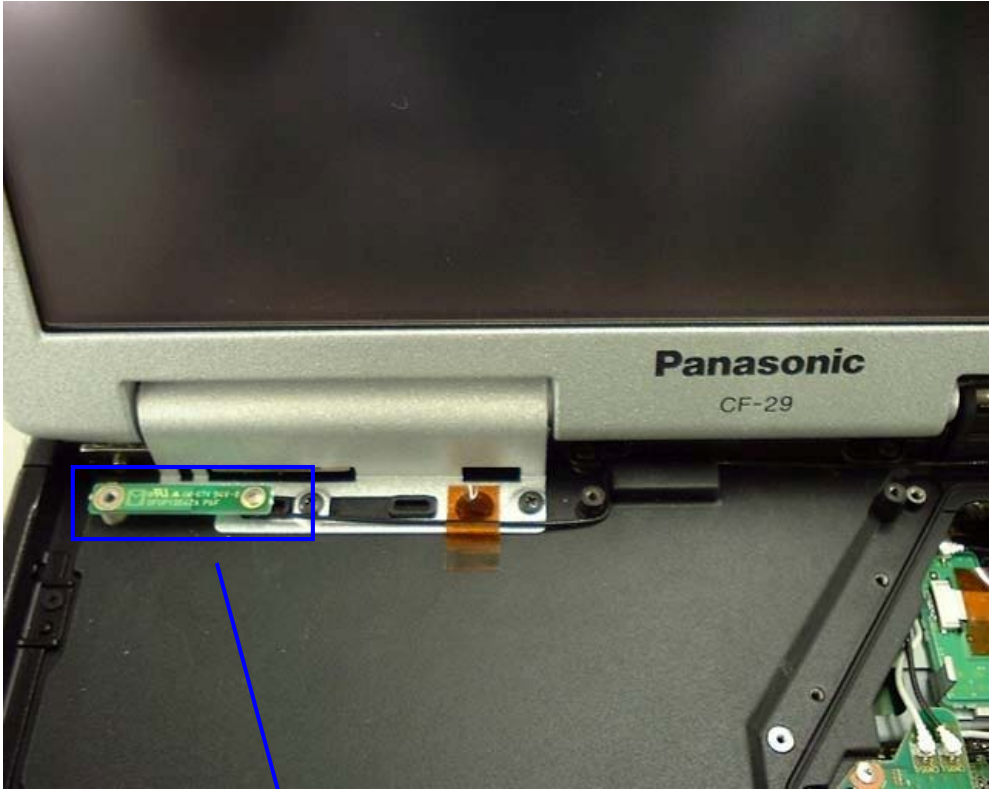
Top View



WLAN Aux TX/RX Antenna View



WLAN Main TX/RX Antenna View



Bluetooth TX/RX Antenna



EVD0rev.A Whip Antenna



EVD0rev.A TX/RX Antenna I/F PWB

5. Antenna Specification

WLAN Main TX/RX Antenna: Pattern Antenna (Inverted F type: 1.86dBi max)

WLAN Aux TX/RX Antenna: Pattern Antenna (Inverted F type: 2.86dBi max)

Bluetooth TX/RX Antenna: Pattern Antenna (Inverted F type: 1.47dBi max)

EVDO TX/RX Antenna: Whip Antenna (Whip type: 2.15dBi max)