

2) WLAN Card position



WLAN Card Position

3) WLAN exterior photo



WLAN Top View

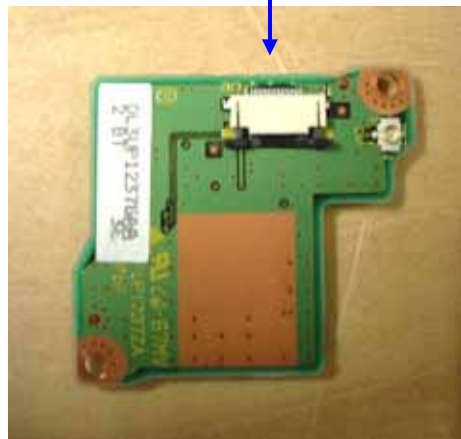


WLAN Bottom View

5) Bluetooth module position

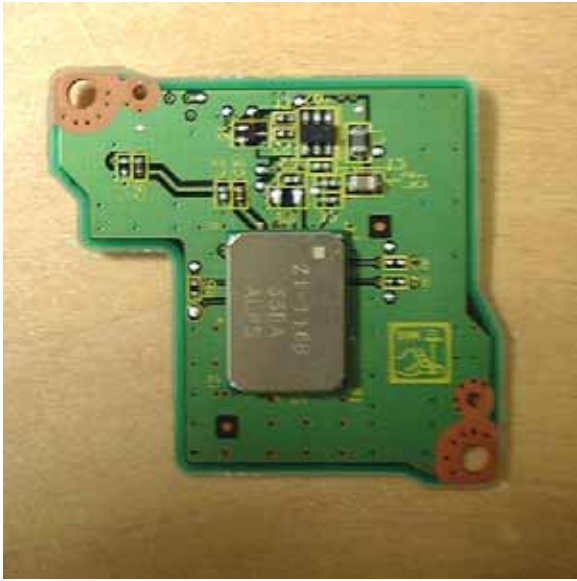


(Rotate +90 deg Figure)

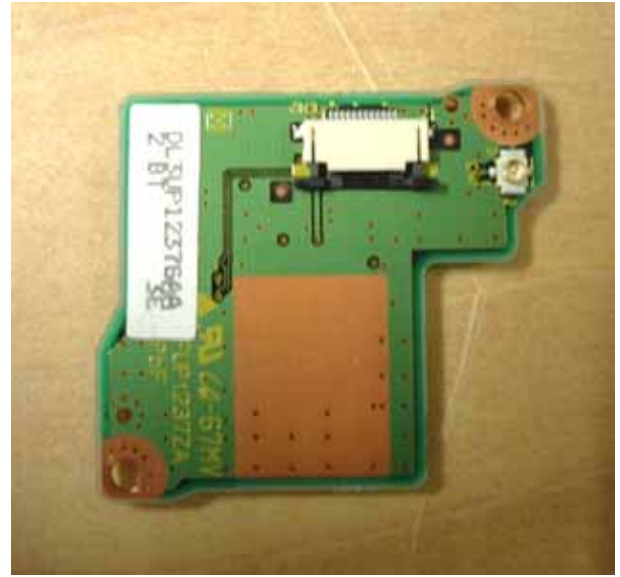


Bottom View of Bluetooth Module with Daughter Board

6) Bluetooth Module exterior photo



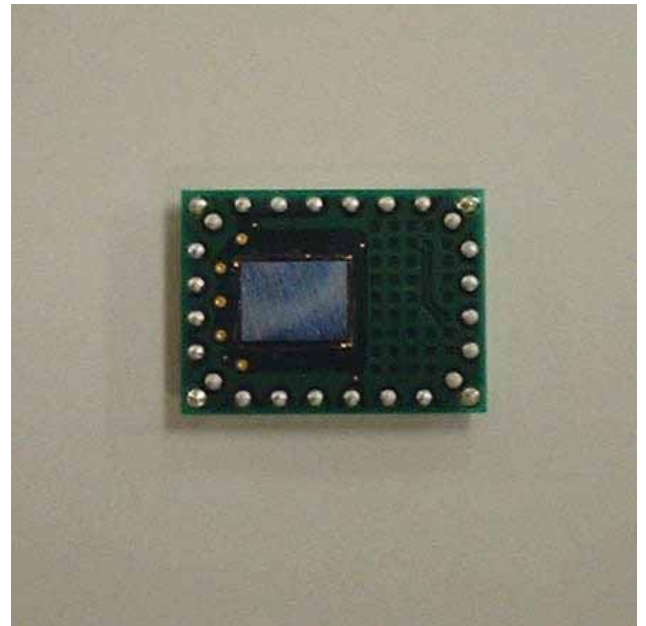
Top View of Bluetooth Module with Daughter-Board



Bottom View of Bluetooth module with Daughter-Board

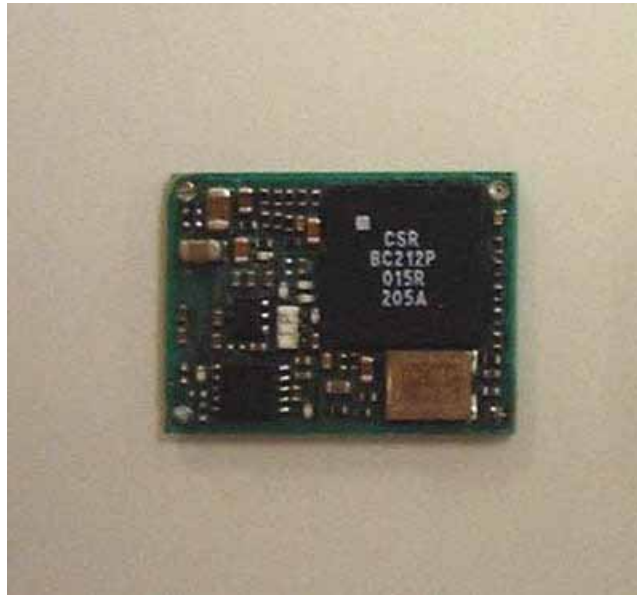


Top View of Bluetooth Module



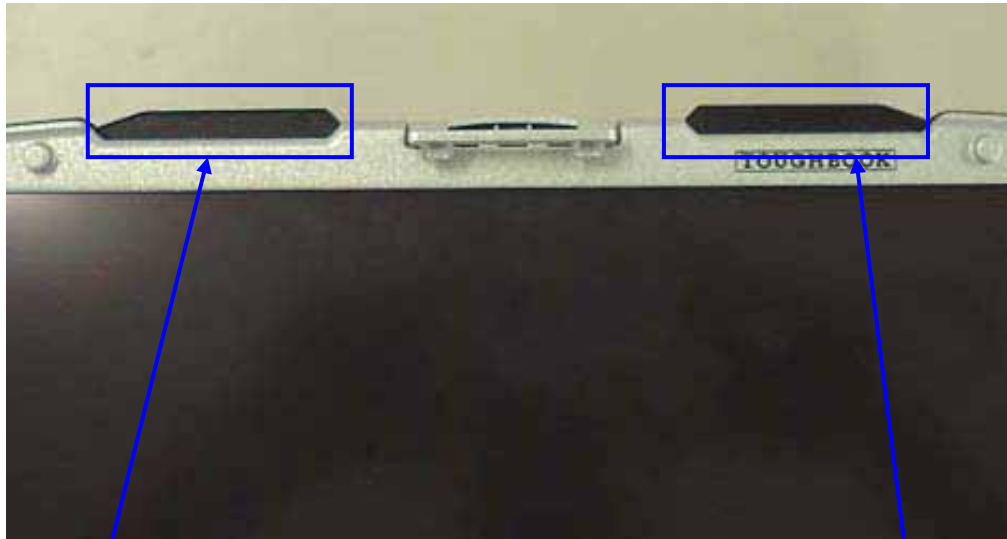
Bottom View of Bluetooth Module

7) Bluetooth Module Interior photo



Bluetooth Module without shield

8) Antenna position (WLANa+b+g)

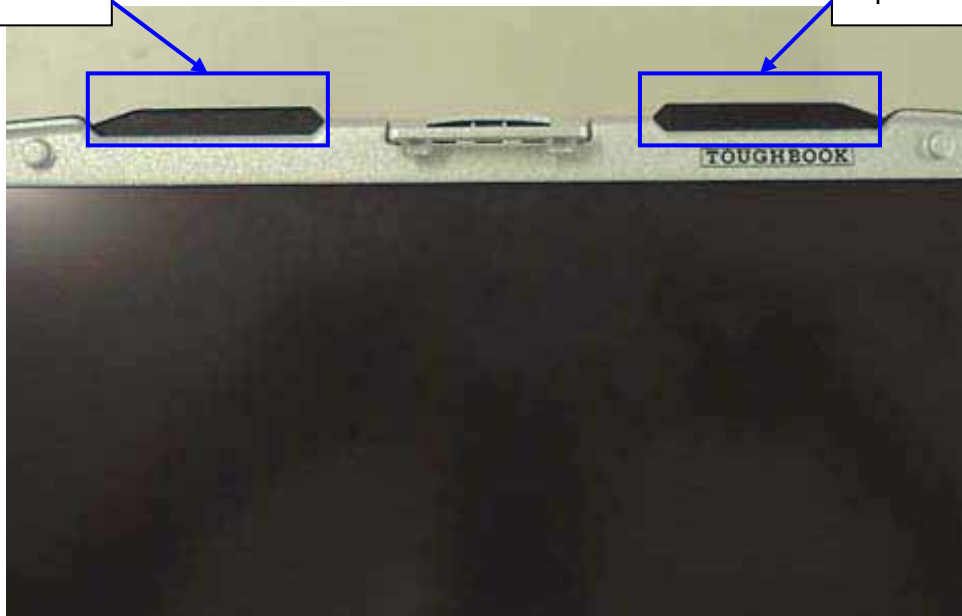


Aux TX/RX
Antenna Cover

Main TX/RX
Antenna Cover

Antenna Cover
Open

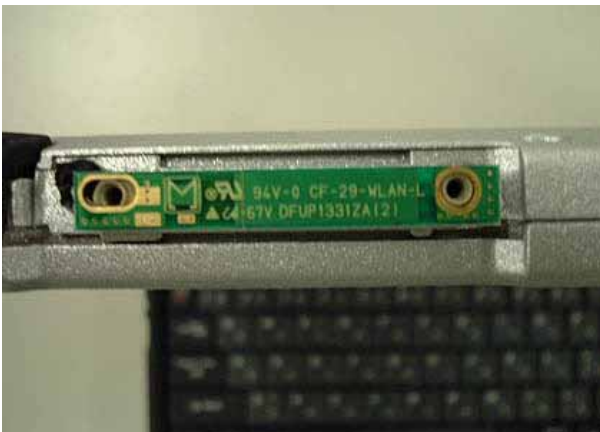
Antenna Cover
Open



9) Antenna Magnified photo (WLANa+b+g)



Top View



Aux TX/RX Antenna View

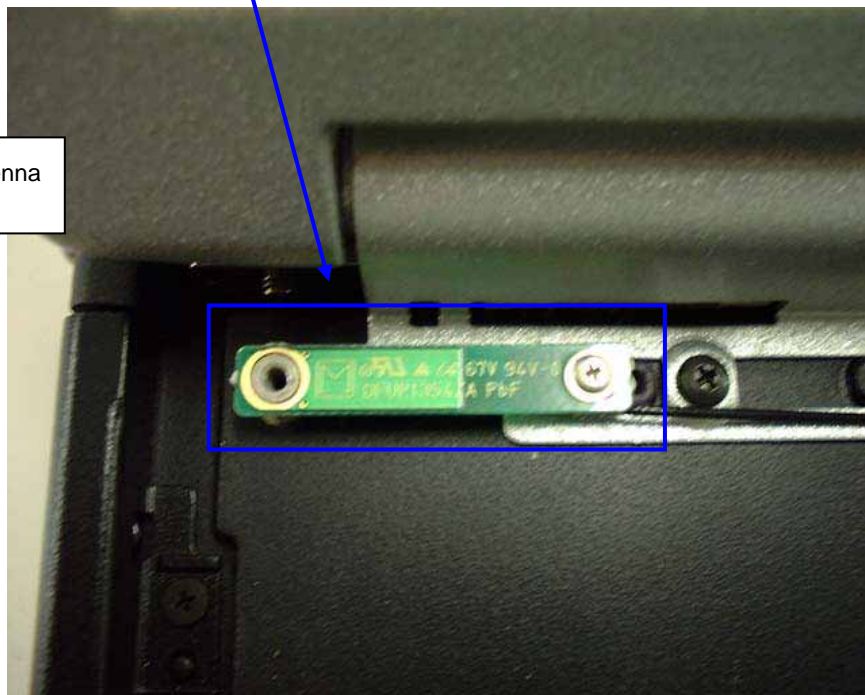


Main TX/RX Antenna View

10) Antenna position (Bluetooth)



Bluetooth Antenna



11) Antenna Specification

WLANa+b+g Main TX/RX Antenna	(Inverted F type: 1.86dBi max)
WLANa+b+g Aux TX/RX Antenna	(Inverted F type: 2.86dBi max)
Bluetooth Antenna:	(Inverted F type: 1.47dBi max)

Note) WLAN Main/Aux Antenna is diversity Antenna.