

**ATTACHMENT Q – SAR TEST DATA**

---

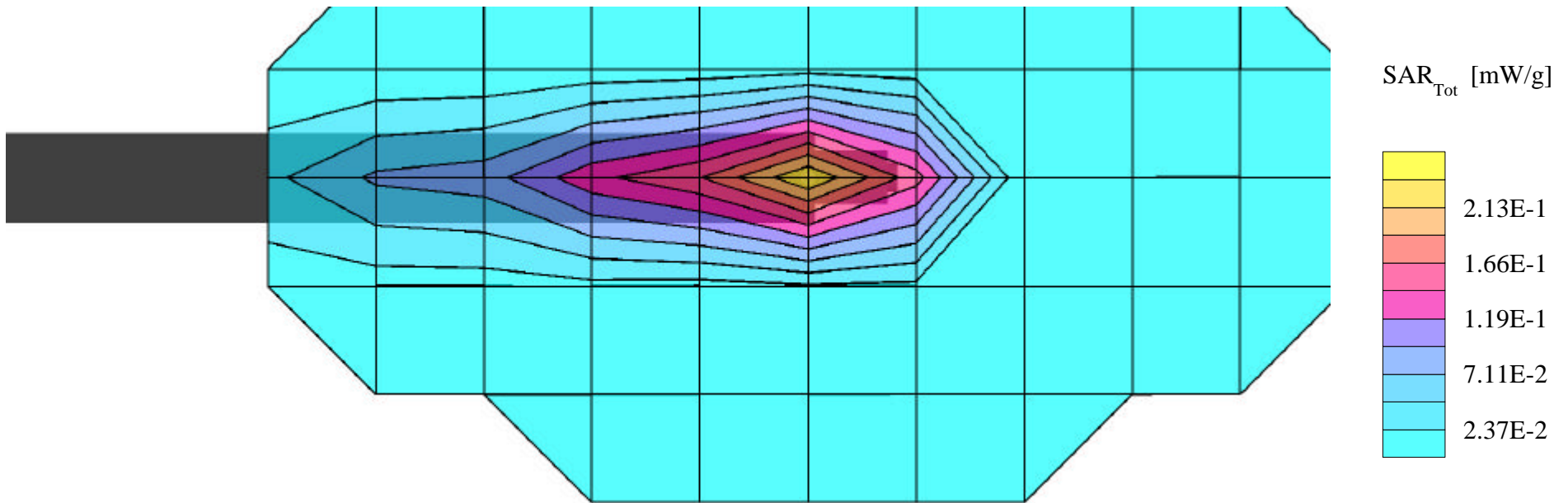
# PANASONIC FCC ID:ACJ9TGCF-27GSM -- PCS Body SAR

Generic Twin Phantom; Flat Section; Probe: ET3DV5 - SN1370 -- Probe Cal Date 02/00

Med. Parameters 1900 MHz Muscle:  $\sigma = 1.85$  mho/m  $\epsilon_r = 54.2$   $\rho = 1.00$  g/cm<sup>3</sup>; Antenna Position -- In; Crest Factor 7.0

**SAR (1g): 0.238 mW/g, SAR (10g): 0.133 mW/g**

Panasonic PC with PCS Single-Mode phone module  
Body SAR PCS GSM Mode, Channel 512 [1850.2MHz]  
Conducted power = 29.7dBm  
Test Date 11-13-2000



# PANASONIC FCC ID:ACJ9TGCF-27GSM -- PCS Body SAR

Generic Twin Phantom; Flat Section; Probe: ET3DV5 - SN1370 -- Probe Cal Date 02/00

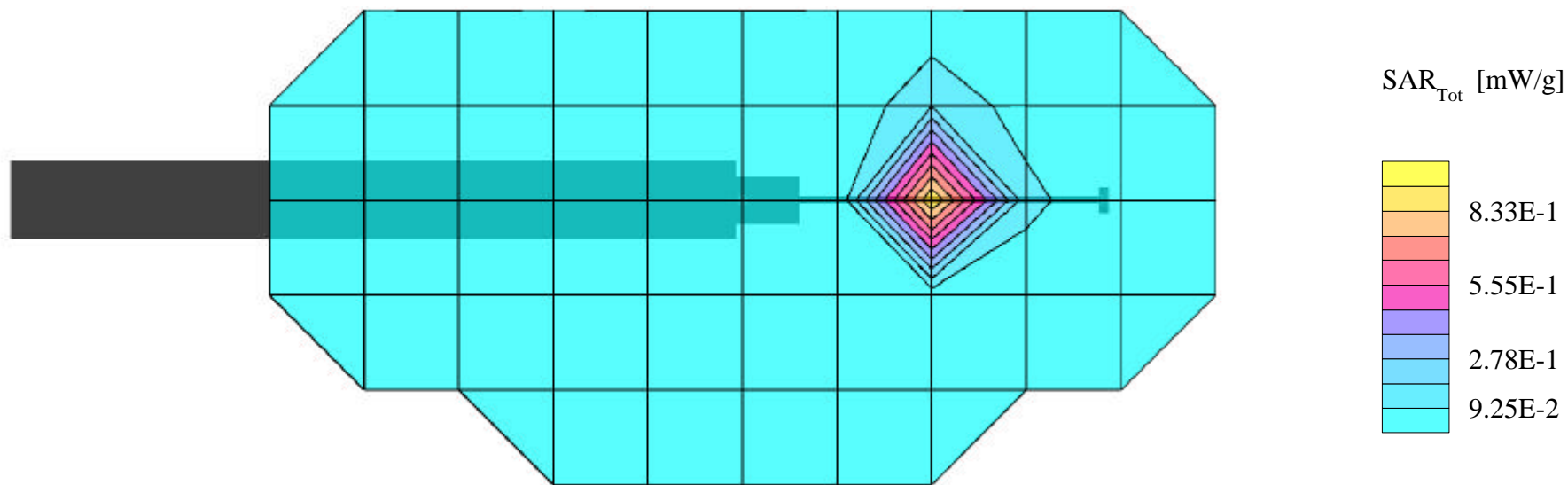
Med. Parameters 1900 MHz Muscle:  $\sigma = 1.85$  mho/m  $\epsilon_r = 54.2$   $\rho = 1.00$  g/cm<sup>3</sup>; Antenna Position -- Out; Crest Factor 7.0

**SAR (1g): 1.08 mW/g**, SAR (10g): 0.606 mW/g

Panasonic PC with PCS Single-Mode phone module  
Body SAR PCS GSM Mode, Channel 512 [1850.2MHz]

Conducted power = 29.7dBm

Test Date 11-13-2000



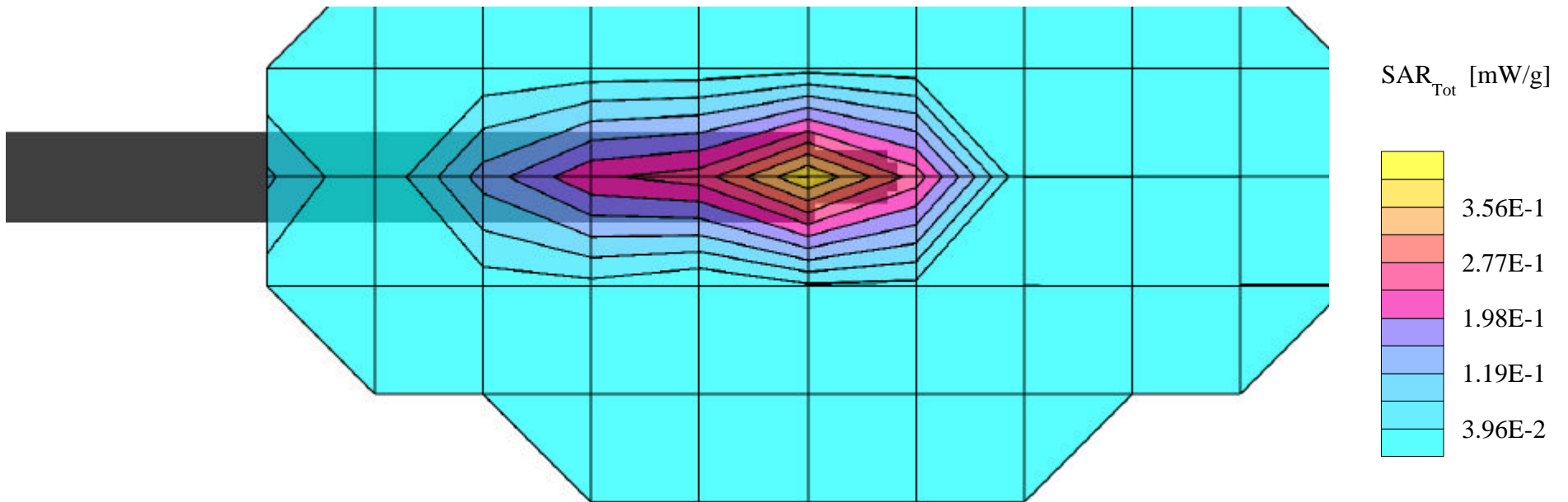
# PANASONIC FCC ID:ACJ9TGCF-27GSM -- PCS Body SAR

Generic Twin Phantom; Flat Section; Probe: ET3DV5 - SN1370 -- Probe Cal Date 02/00

Med. Parameters 1900 MHz Muscle:  $\sigma = 1.85$  mho/m  $\epsilon_r = 54.2$   $\rho = 1.00$  g/cm<sup>3</sup>; Antenna Position -- In; Crest Factor 7.0

**SAR (1g): 0.408 mW/g, SAR (10g): 0.218 mW/g**

Panasonic PC with PCS Single-Mode phone module  
Body SAR PCS GSM Mode, Channel 649 [1877.6MHz]  
Conducted power = 30.0dBm  
Test Date 11-13-2000



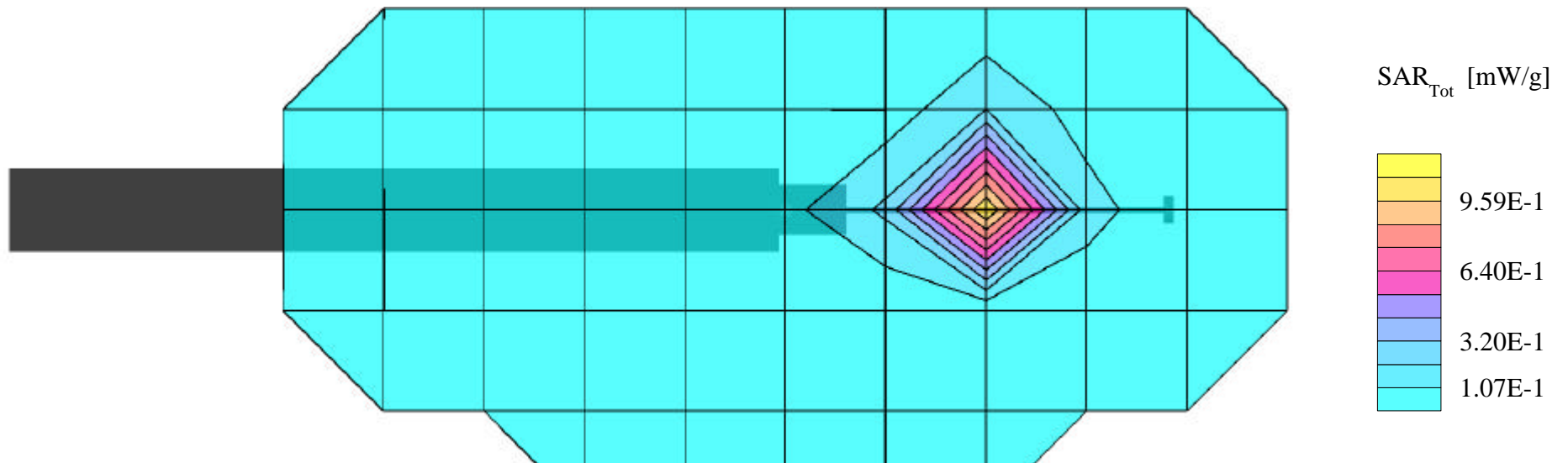
# PANASONIC FCC ID:ACJ9TGCF-27GSM -- PCS Body SAR

Generic Twin Phantom; Flat Section; Probe: ET3DV5 - SN1370 -- Probe Cal Date 02/00

Med. Parameters 1900 MHz Muscle:  $\sigma = 1.85$  mho/m  $\epsilon_r = 54.2$   $\rho = 1.00$  g/cm<sup>3</sup>; Antenna Position -- Out; Crest Factor 7.0

**SAR (1g): 1.23 mW/g, SAR (10g): 0.704 mW/g**

Panasonic PC with PCS Single-Mode phone module  
Body SAR PCS GSM Mode, Channel 649 [1877.6MHz]  
Conducted power = 30.0dBm  
Test Date 11-13-2000



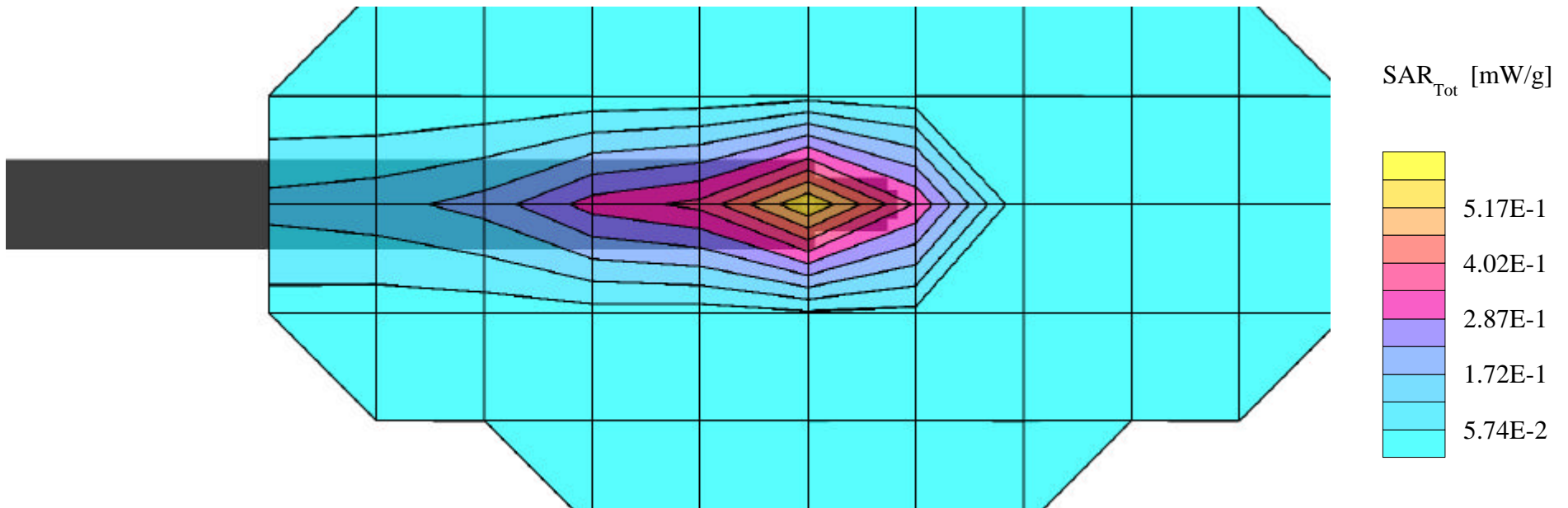
# PANASONIC FCC ID:ACJ9TGCF-27GSM -- PCS Body SAR

Generic Twin Phantom; Flat Section; Probe: ET3DV5 - SN1370 -- Probe Cal Date 02/00

Med. Parameters 1900 MHz Muscle:  $\sigma = 1.85$  mho/m  $\epsilon_r = 54.2$   $\rho = 1.00$  g/cm<sup>3</sup>; Antenna Position -- In; Crest Factor 7.0

**SAR (1g): 0.553 mW/g, SAR (10g): 0.313 mW/g**

Panasonic PC with PCS Single-Mode phone module  
Body SAR PCS GSM Mode, Channel 810 [1909.8MHz]  
Conducted power = 30.1dBm  
Test Date 11-13-2000



# PANASONIC FCC ID:ACJ9TGCF-27GSM -- PCS Body SAR

Generic Twin Phantom; Flat Section; Probe: ET3DV5 - SN1370 -- Probe Cal Date 02/00

Med. Parameters 1900 MHz Muscle:  $\sigma = 1.85$  mho/m  $\epsilon_r = 54.2$   $\rho = 1.00$  g/cm<sup>3</sup>; Antenna Position -- Out; Crest Factor 7.0

**SAR (1g): 1.20 mW/g, SAR (10g): 0.616 mW/g**

Panasonic PC with PCS Single-Mode phone module  
Body SAR PCS GSM Mode, Channel 810 [1909.8MHz]  
Conducted power = 30.1dBm  
Test Date 11-13-2000

